

NOTES-
 -UNIT 203 A SHOWN- 208 A IS
 MIRRORED
 -REFER TO M1.00 FOR
 MILLWORK DETAILS

UNIT 203A UNIT 208A

SECOND FLOOR KEY PLAN- NTS

Prepared For:
**The Inn at Diamond
 Cove, LLC.**
 PO BOX 3572
 PORTLAND, ME 04101

Interior Designer:
truexcollins
 INTERIORS
 208 BATTERY STREET BURLINGTON, VERMONT 05401 USA
 Phone 802.686.2775 ©2012-1016
 ARCHITECTURE INTERIOR DESIGN@TRUEXCOLLINS.COM

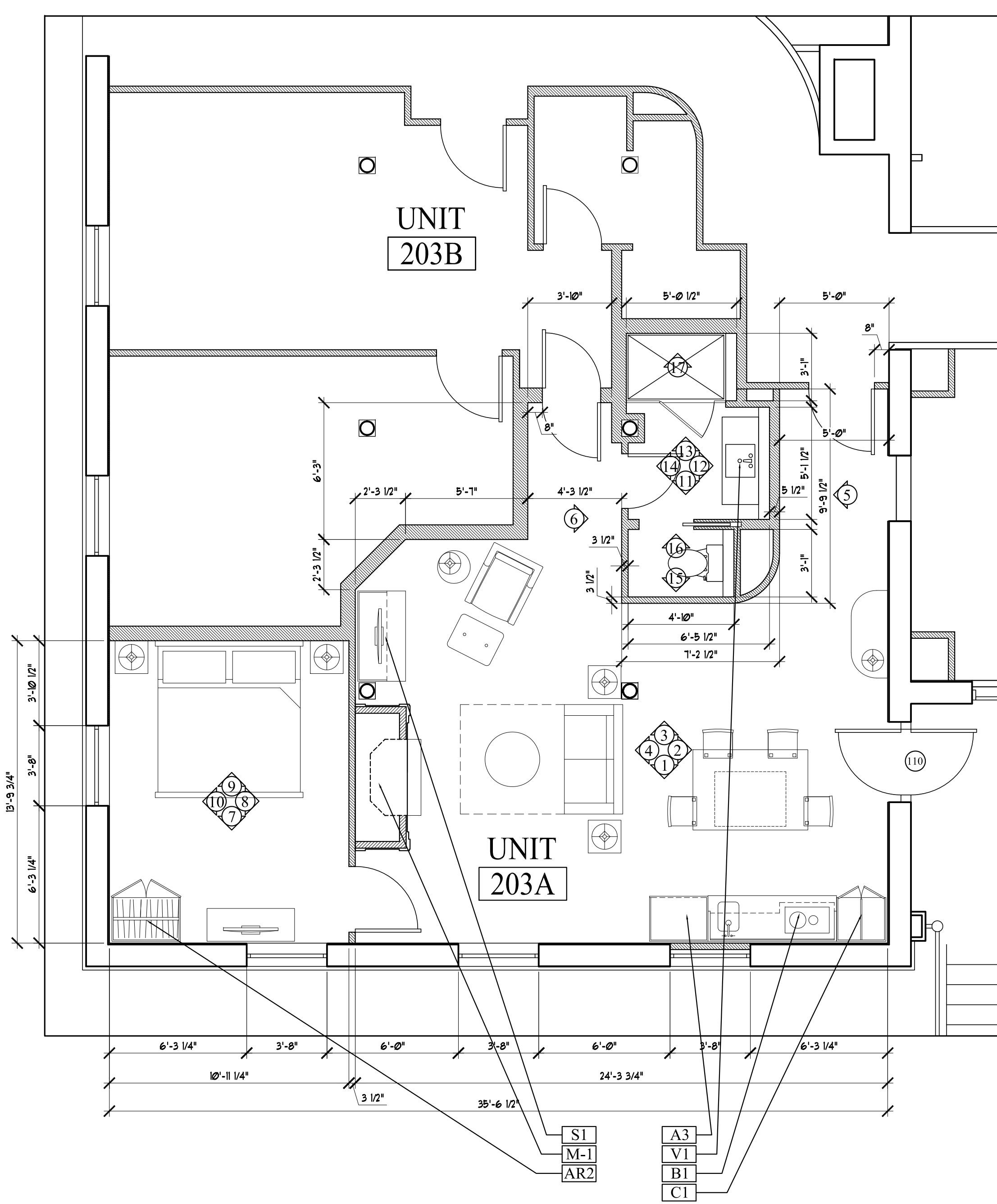
Architect:
ARCHETYPE
 architects
 48 Union Wharf Portland, Maine 04101
 (207) 772-6022 Fax (207) 772-4056

Project:
**THE INN AT
 DIAMOND COVE,
 LLC**
 McKINLEY COURT
 GREAT DIAMOND ISLAND, MAINE

Revisions:

Date: 04 March 2013
 Scale: As Noted
**INTERIOR
 ELEVATIONS**
 UNIT 203 A, 208 A

A9.18



1 | INTERIOR ELEVATION UNIT 203A
1/4"=1'-0"

2 | INTERIOR ELEVATION UNIT 203A
1/4"=1'-0"

3 | INTERIOR ELEVATION UNIT 203A
1/4"=1'-0"

4 | INTERIOR ELEVATION UNIT 203A
1/4"=1'-0"

5 | INTERIOR ELEVATION UNIT 203A
1/4"=1'-0"

6 | INTERIOR ELEVATION UNIT 203A
1/4"=1'-0"

7 | INTERIOR ELEVATION UNIT 203A
1/4"=1'-0"

8 | INTERIOR ELEVATION UNIT 203A
1/4"=1'-0"

9 | INTERIOR ELEVATION UNIT 203A
1/4"=1'-0"

10 | INTERIOR ELEVATION UNIT 203A
1/4"=1'-0"

11 | INTERIOR ELEVATION UNIT 203A
1/4"=1'-0"

12 | INTERIOR ELEVATION UNIT 203A
1/4"=1'-0"

13 | INTERIOR ELEVATION UNIT 203A
1/4"=1'-0"

14 | INTERIOR ELEVATION UNIT 203A
1/4"=1'-0"

15 | INTERIOR ELEVATION UNIT 203A
1/4"=1'-0"

16 | INTERIOR ELEVATION UNIT 203A
1/4"=1'-0"

17 | INTERIOR ELEVATION UNIT 203A
1/4"=1'-0"

ANGLED WALL CURVED WALL

SEE DRAWING 3/M1.00 FOR DETAILS