

NOTES-
 -UNIT 203 B SHOWN- 208 B IS
 MIRRORED
 -REFER TO M1.00 FOR
 MILLWORK DETAILS

UNIT 203B UNIT 208B

SECOND FLOOR KEY PLAN- NTS

Prepared For:
**The Inn at Diamond
 Cove, LLC.**
 PO BOX 3572
 PORTLAND, ME 04101

Interior Designer:
truexcollins
 INTERIORS
 208 BATTERY STREET BURLINGTON, VERMONT 05401 USA
 Phone 802-688-2775 ©2012-2013
 ARCHITECTURE INTERIOR DESIGN@TRUXCOLLINS.COM

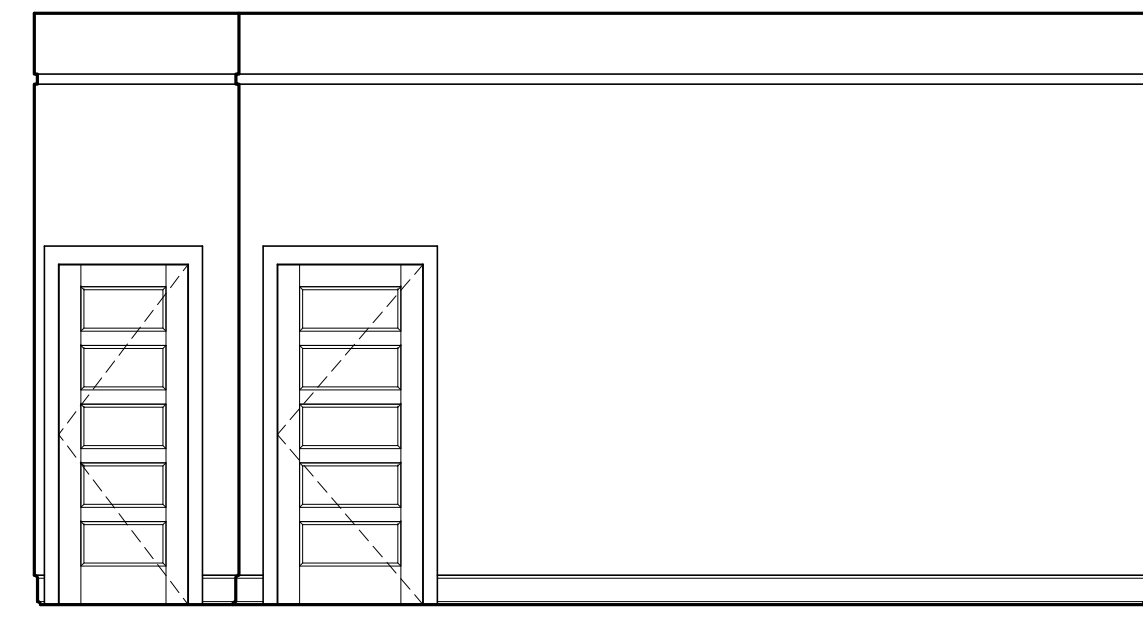
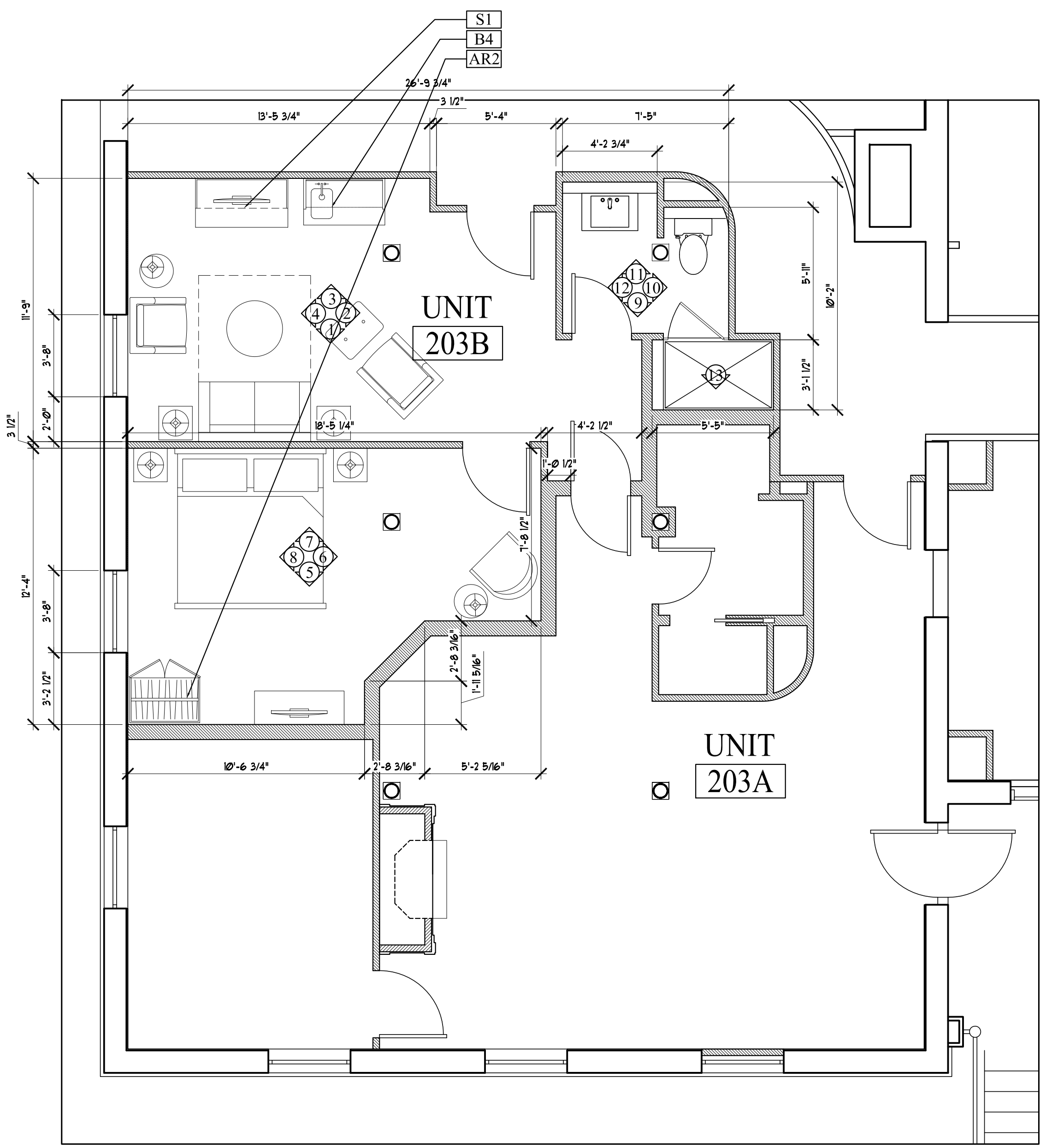
Architect:
ARCHETYPE
 architects
 48 Union Wharf Portland, Maine 04101
 (207) 772-6022 Fax (207) 772-4056

Project:
**THE INN AT
 DIAMOND COVE,
 LLC**
 MCKINLEY COURT
 GREAT DIAMOND ISLAND, MAINE

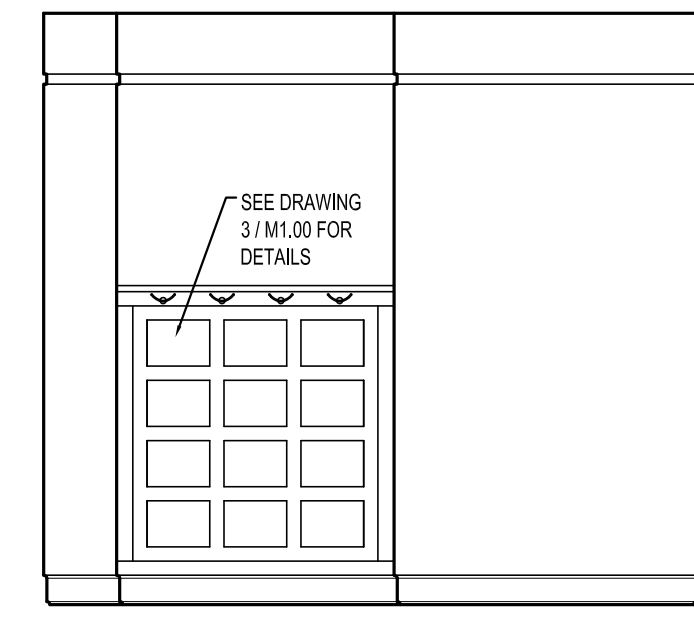
Revisions:

| | |
|--|--|
| | |
| | |
| | |
| | |
| | |

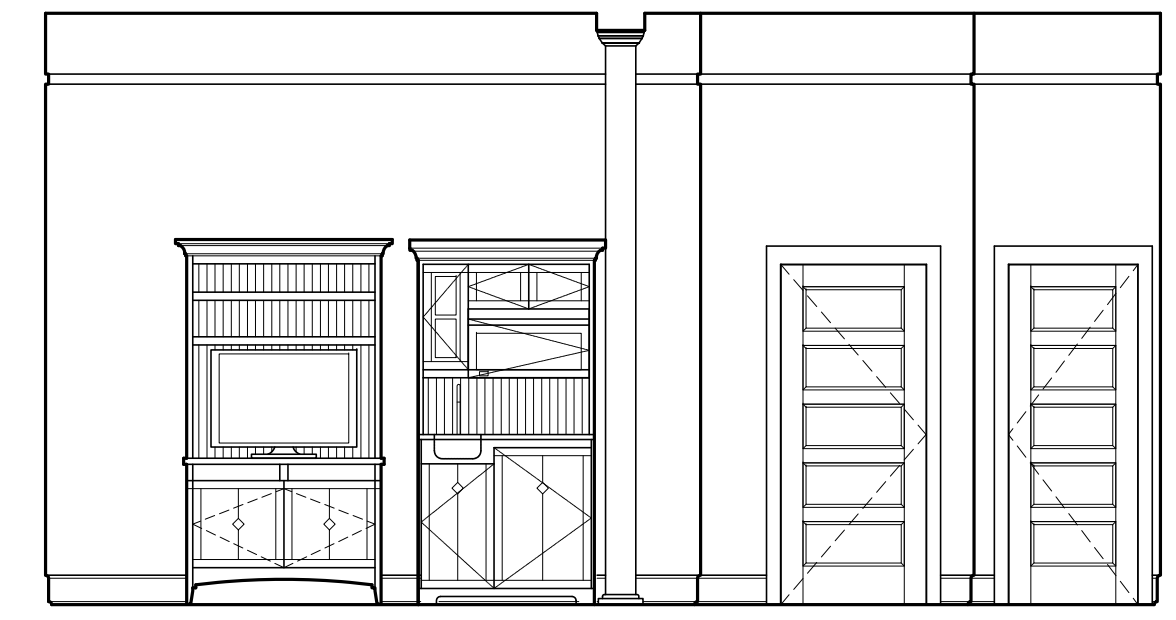
Date: 04 March 2013
 Scale: As Noted
**INTERIOR
 ELEVATIONS**
 UNIT 203 B, 208 B



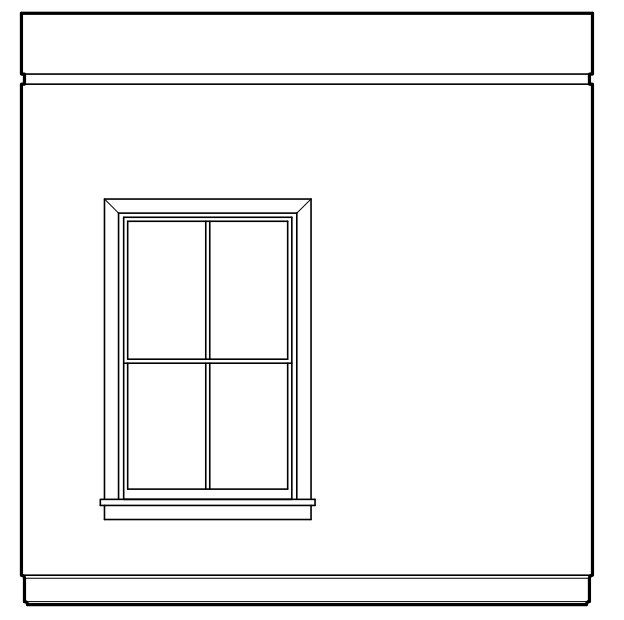
1 | INTERIOR ELEVATION UNIT 203B
 1/4"=1'-0"



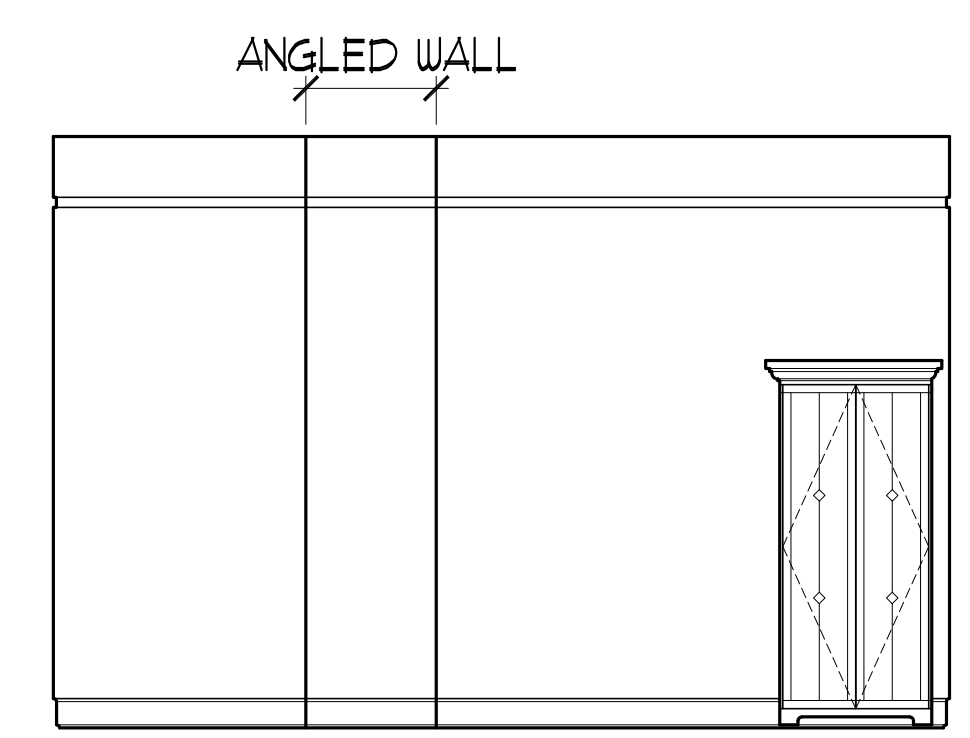
2 | INTERIOR ELEVATION UNIT 203B
 1/4"=1'-0"



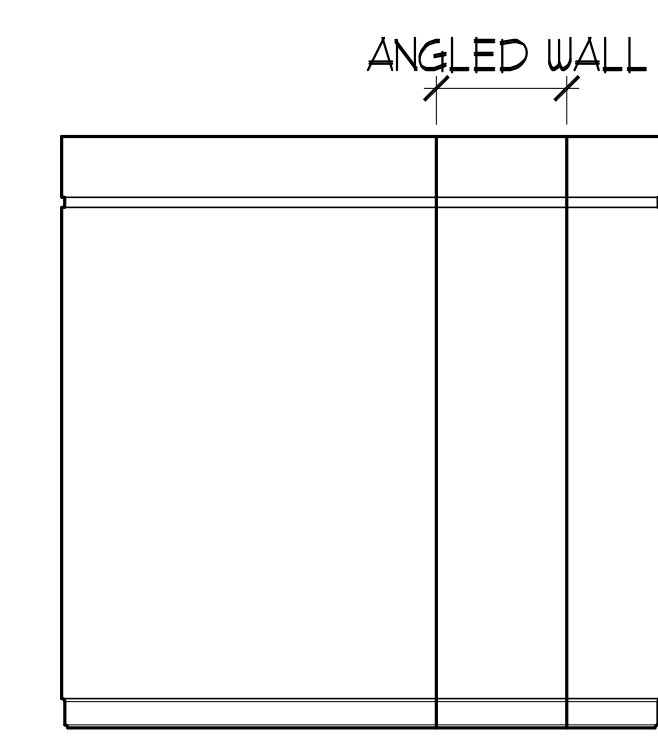
3 | INTERIOR ELEVATION UNIT 203B
 1/4"=1'-0"



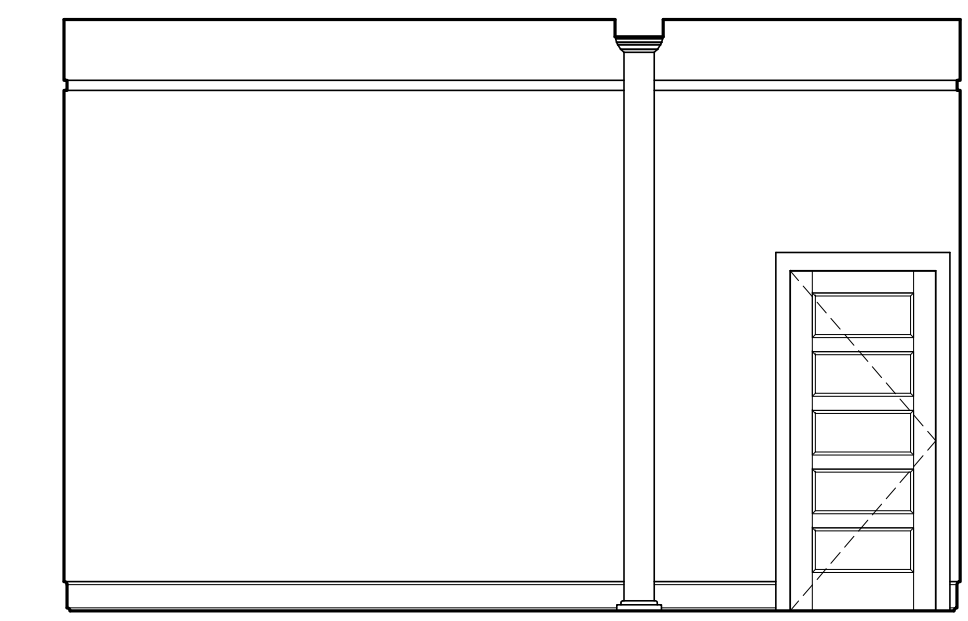
4 | INTERIOR ELEVATION UNIT 203B
 1/4"=1'-0"



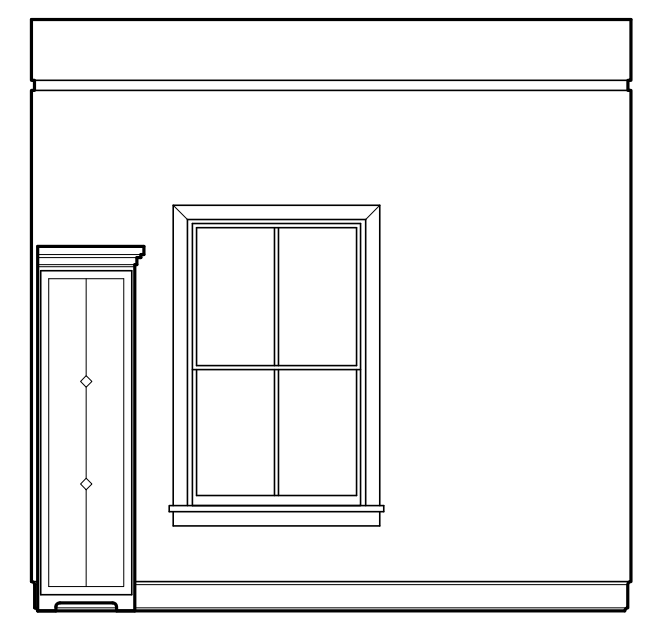
5 | INTERIOR ELEVATION UNIT 203B
 1/4"=1'-0"



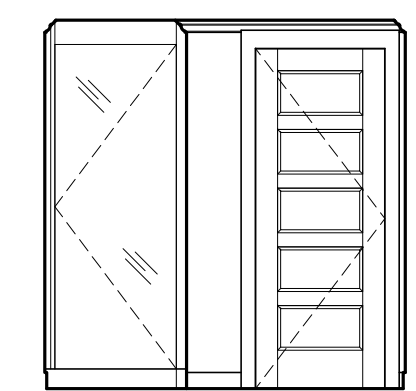
6 | INTERIOR ELEVATION UNIT 203B
 1/4"=1'-0"



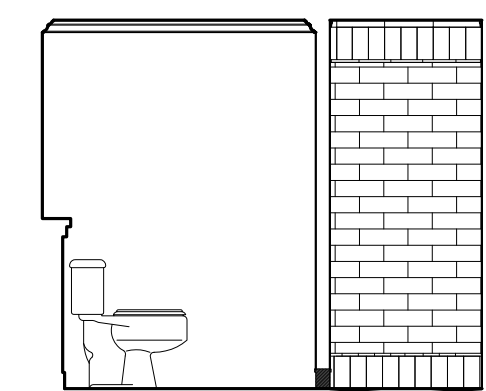
7 | INTERIOR ELEVATION UNIT 203B
 1/4"=1'-0"



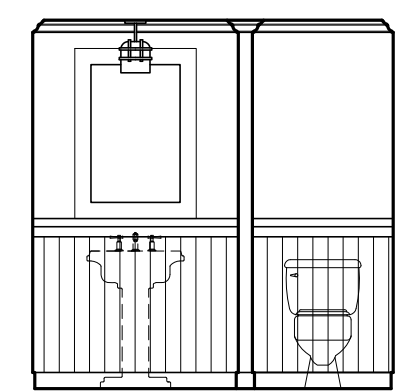
8 | INTERIOR ELEVATION UNIT 203B
 1/4"=1'-0"



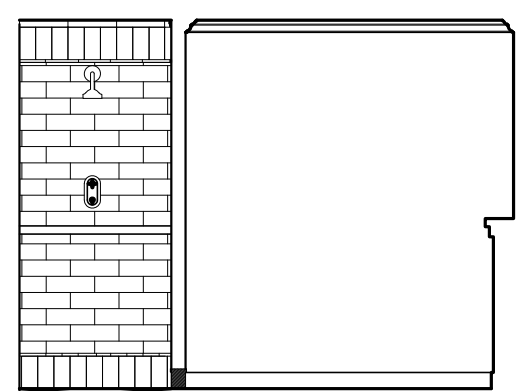
9 | INTERIOR ELEVATION UNIT 203B
 1/4"=1'-0"



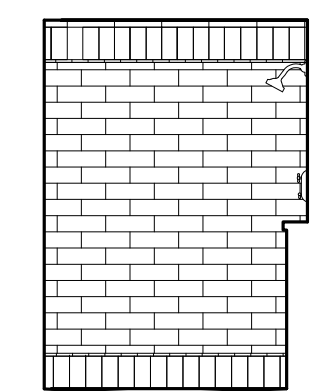
10 | INTERIOR ELEVATION UNIT 203B
 1/4"=1'-0"



11 | INTERIOR ELEVATION UNIT 203B
 1/4"=1'-0"



12 | INTERIOR ELEVATION UNIT 203B
 1/4"=1'-0"



13 | INTERIOR ELEVATION UNIT 203B
 1/4"=1'-0"