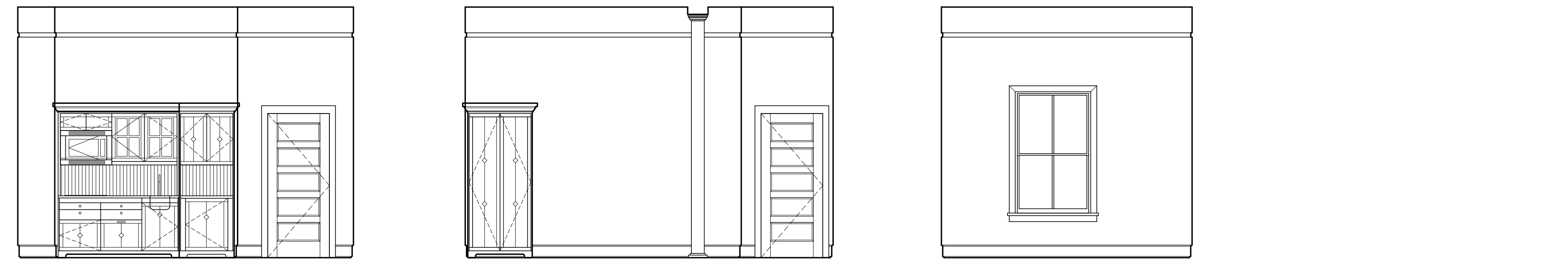


1 | INTERIOR ELEVATION UNIT 202A  
1/4"=1'-0"

2 | INTERIOR ELEVATION UNIT 202A  
1/4"=1'-0"

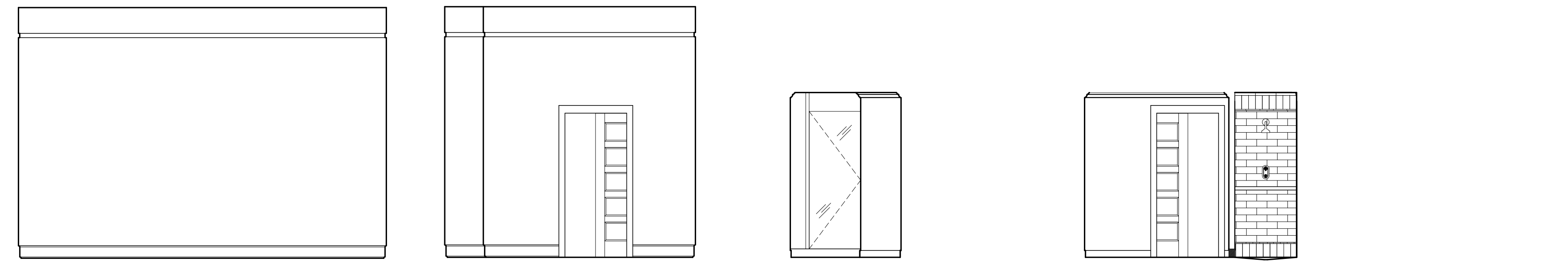
3 | INTERIOR ELEVATION UNIT 202A  
1/4"=1'-0"



4 | INTERIOR ELEVATION UNIT 202A  
1/4"=1'-0"

5 | INTERIOR ELEVATION UNIT 202A  
1/4"=1'-0"

6 | INTERIOR ELEVATION UNIT 202A  
1/4"=1'-0"

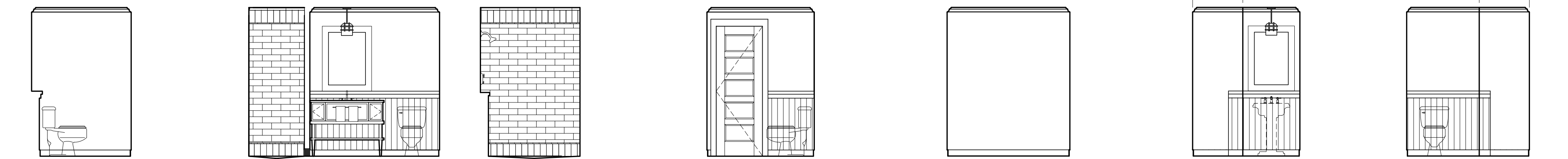


7 | INTERIOR ELEVATION UNIT 202A  
1/4"=1'-0"

8 | INTERIOR ELEVATION UNIT 202A  
1/4"=1'-0"

9 | INTERIOR ELEVATION UNIT 202A  
1/4"=1'-0"

10 | INTERIOR ELEVATION UNIT 202A  
1/4"=1'-0"



11 | INTERIOR ELEVATION UNIT 202A  
1/4"=1'-0"

12 | INTERIOR ELEVATION UNIT 202A  
1/4"=1'-0"

13 | INTERIOR ELEVATION UNIT 202A  
1/4"=1'-0"

14 | INTERIOR ELEVATION UNIT 202A  
1/4"=1'-0"

15 | INTERIOR ELEVATION UNIT 202A  
1/4"=1'-0"

16 | INTERIOR ELEVATION UNIT 202A  
1/4"=1'-0"

17 | INTERIOR ELEVATION UNIT 202A  
1/4"=1'-0"

Prepared For:  
**The Inn at Diamond Cove, LLC.**  
 PO BOX 3572  
 PORTLAND, ME 04101

Interior Designer:  
**truexcollins**  
 INTERIORS  
 208 BATTERY STREET BURLINGTON, VERMONT 05401 USA  
 Phone 802-688-2775 Fax 802-227-1076  
 ARCHITECTURE INTERIOR DESIGN truxcollins.com

Architect:  
**ARCHETYPE architects**  
 48 Union Wharf Portland, Maine 04101  
 (207) 772-6022 Fax (207) 772-4056

Project:  
**THE INN AT DIAMOND COVE, LLC**  
 MCKINLEY COURT  
 GREAT DIAMOND ISLAND, MAINE

Revisions:

Date: 04 March 2013  
 Scale: As Noted

**INTERIOR ELEVATIONS**  
**UNIT 202 A, 209 A**

**A9.15**