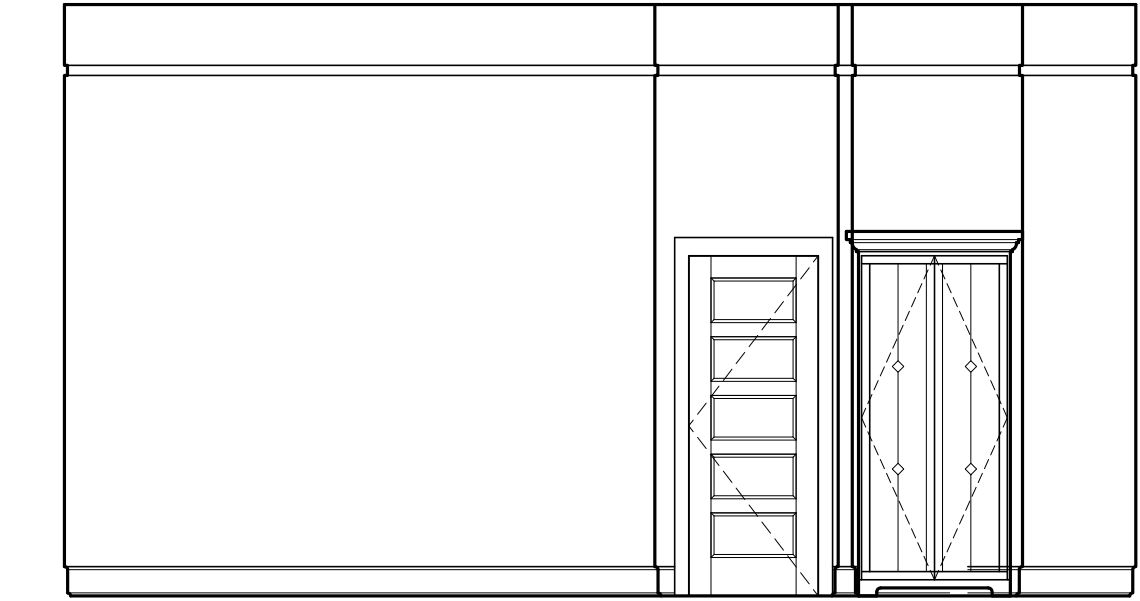
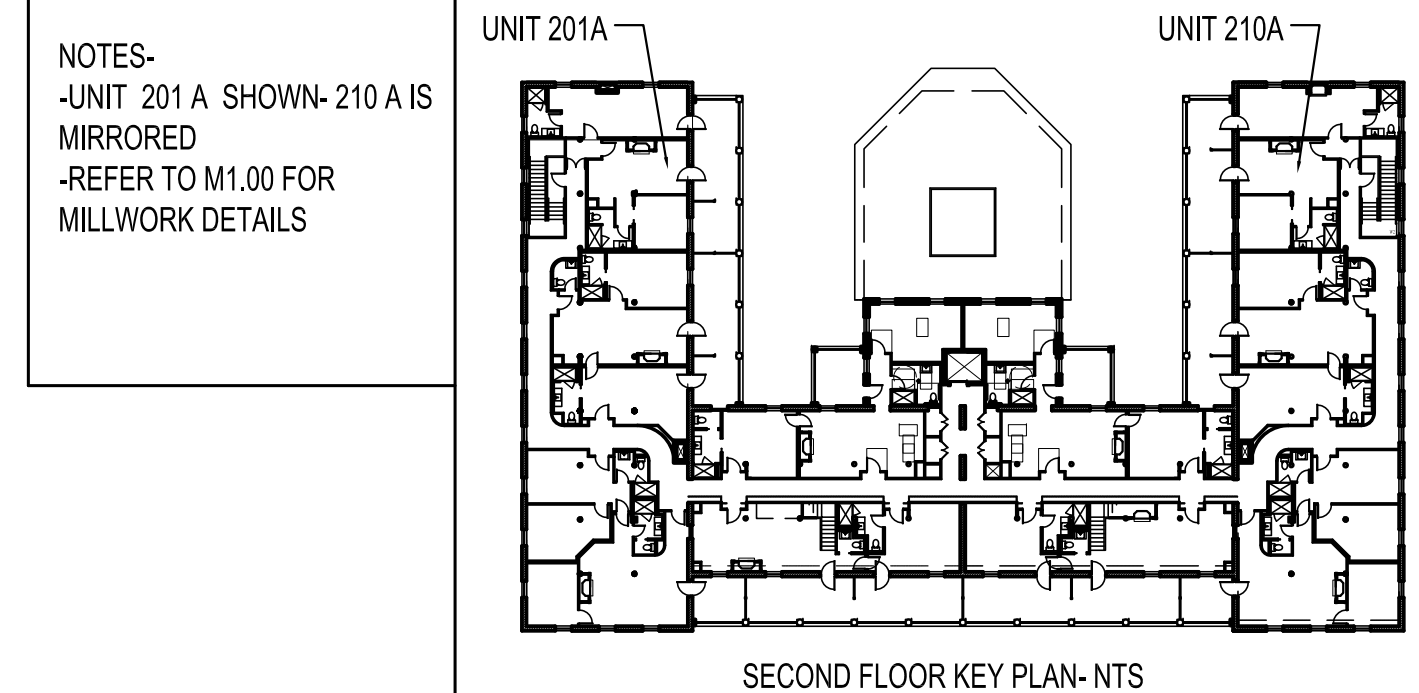
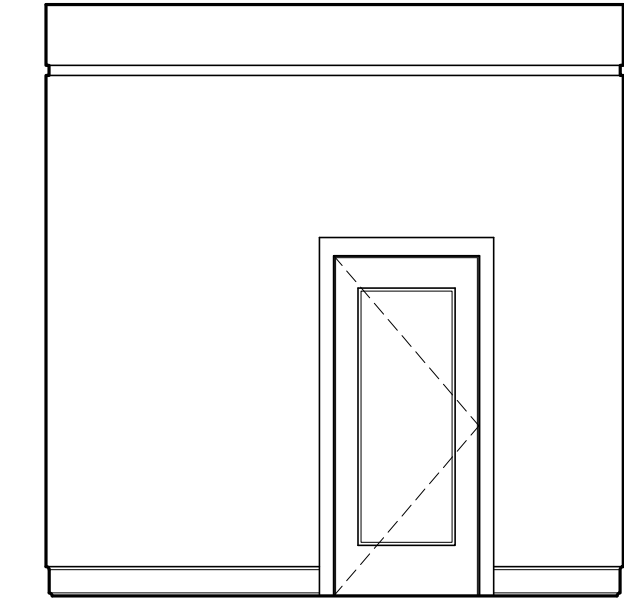


- SI
- M4
- T7
- A3
- B1
- C1
- AR2
- V1



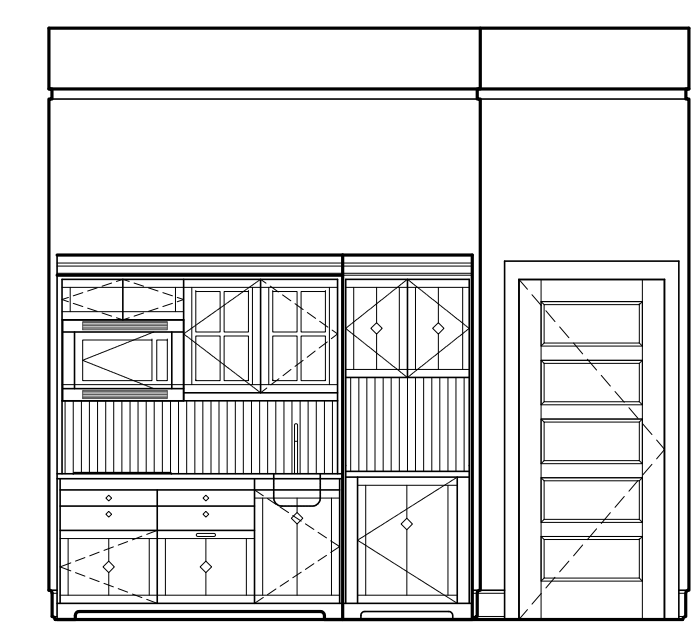
1 | INTERIOR ELEVATION UNIT 201A  
 1/4"=1'-0"



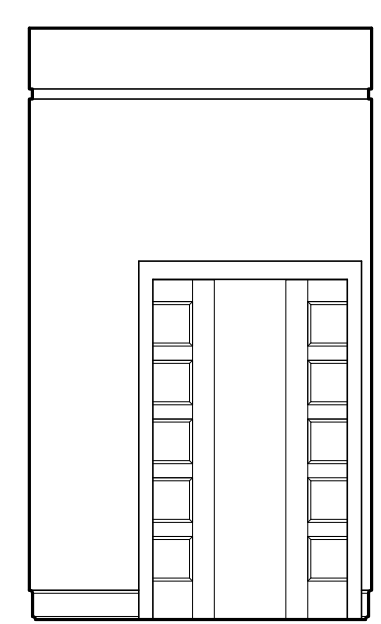
2 | INTERIOR ELEVATION UNIT 201A  
 1/4"=1'-0"



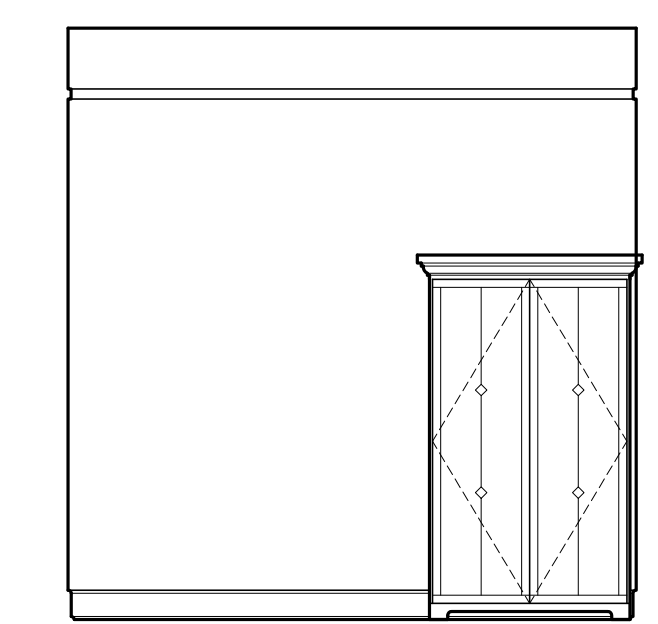
3 | INTERIOR ELEVATION UNIT 201A  
 1/4"=1'-0"



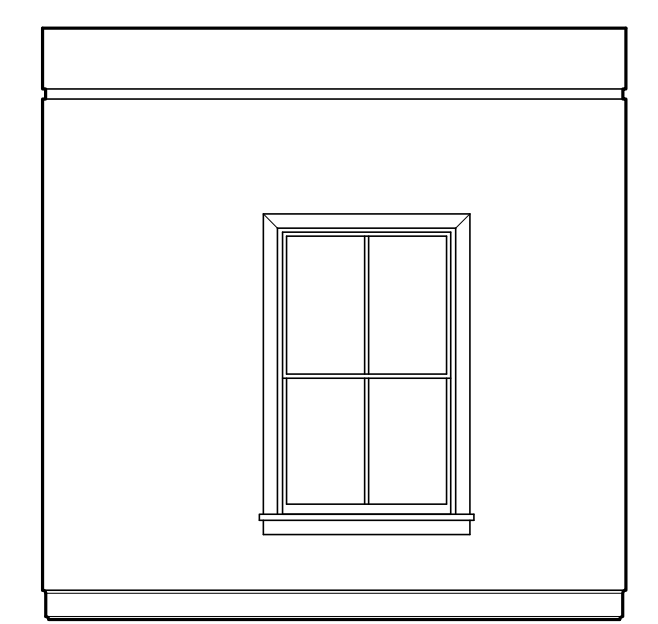
4 | INTERIOR ELEVATION UNIT 201A  
 1/4"=1'-0"



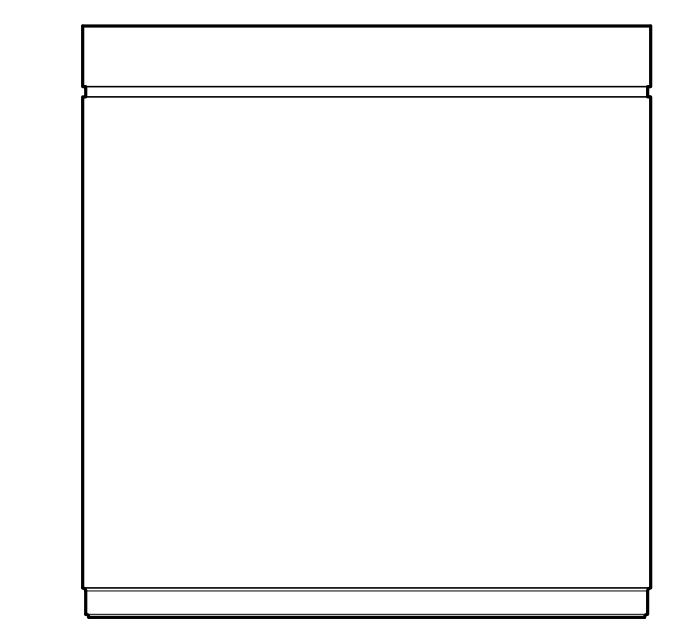
5 | INTERIOR ELEVATION UNIT 201A  
 1/4"=1'-0"



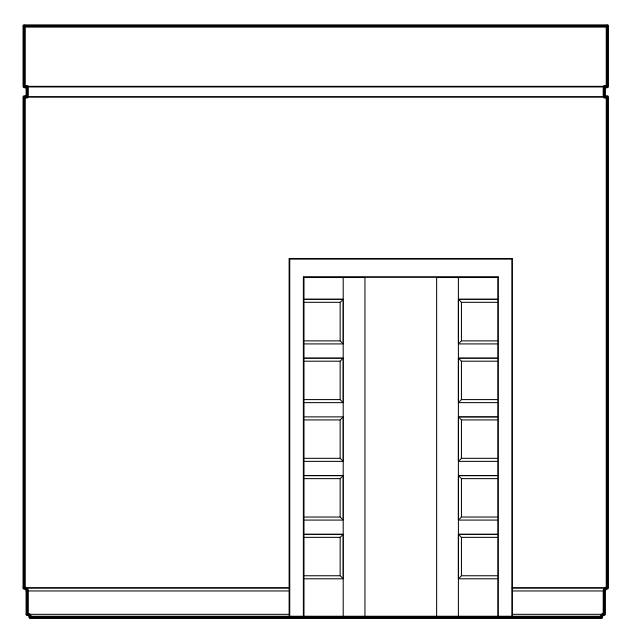
6 | INTERIOR ELEVATION UNIT 201A  
 1/4"=1'-0"



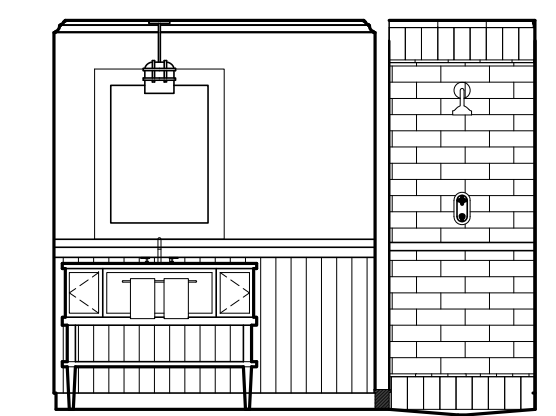
7 | INTERIOR ELEVATION UNIT 201A  
 1/4"=1'-0"



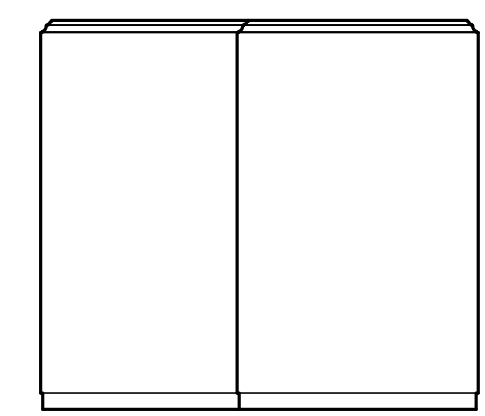
8 | INTERIOR ELEVATION UNIT 201A  
 1/4"=1'-0"



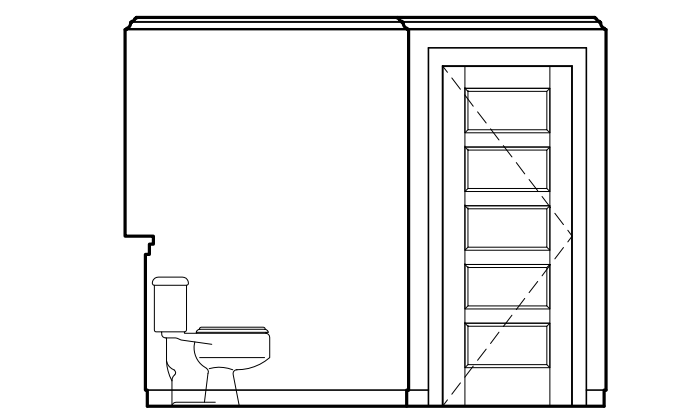
9 | INTERIOR ELEVATION UNIT 201A  
 1/4"=1'-0"



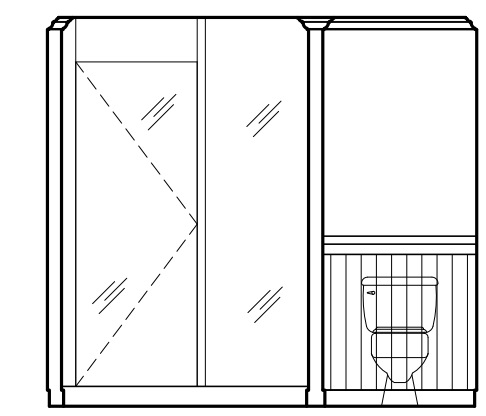
10 | INTERIOR ELEVATION UNIT 201B  
 1/4"=1'-0"



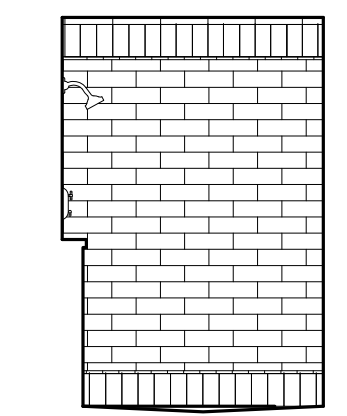
11 | INTERIOR ELEVATION UNIT 201B  
 1/4"=1'-0"



12 | INTERIOR ELEVATION UNIT 201B  
 1/4"=1'-0"



13 | INTERIOR ELEVATION UNIT 201B  
 1/4"=1'-0"



14 | INTERIOR ELEVATION UNIT 201B  
 1/4"=1'-0"

Prepared For:  
**The Inn at Diamond Cove, LLC.**  
 PO BOX 3572  
 PORTLAND, ME 04101

Interior Designer:  
**truexcollins**  
 INTERIORS  
 208 BATTERY STREET BURLINGTON, VERMONT 05401 USA  
 Phone 802.686.2775    802.227.1076  
 ARCHITECTURE INTERIOR DESIGN @TRUXCOLLINS.COM

Architect:  
**ARCHETYPE**  
 architects  
 48 Union Wharf Portland, Maine 04101  
 (207) 772-6022 Fax (207) 772-4056

Project:  
**THE INN AT  
 DIAMOND COVE,  
 LLC**  
 MCKINLEY COURT  
 GREAT DIAMOND ISLAND, MAINE

Revisions:

Date:	04 March 2013
Scale:	As Noted

**INTERIOR  
 ELEVATIONS**  
 UNIT 201 A, 210 A

**A9.14**