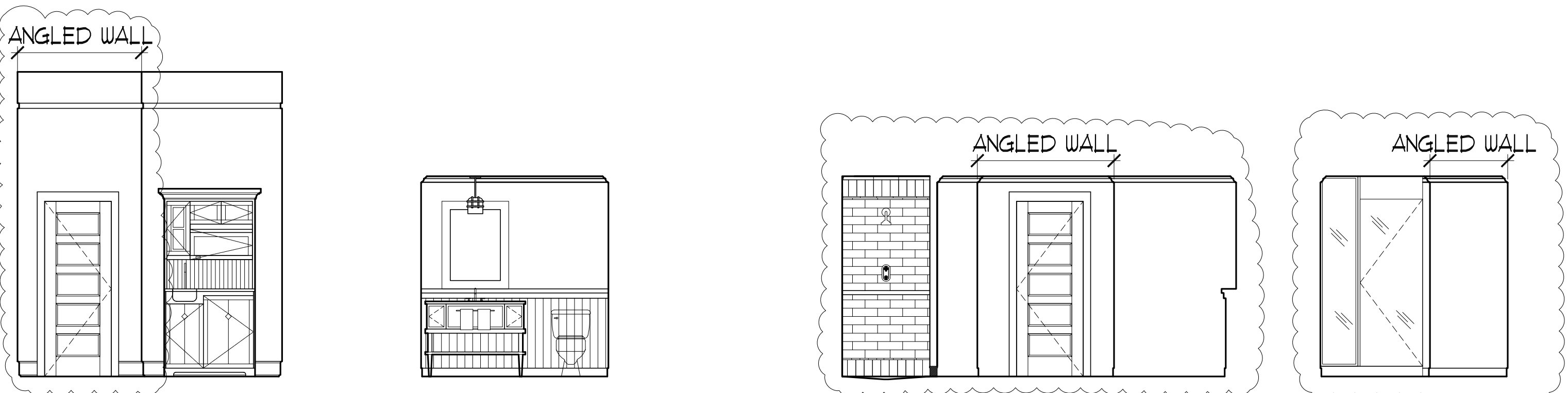


1 | INTERIOR ELEVATION UNIT 201B
1/4"=1'-0"

2 | INTERIOR ELEVATION UNIT 201B
1/4"=1'-0"

3 | INTERIOR ELEVATION UNIT 201B
1/4"=1'-0"

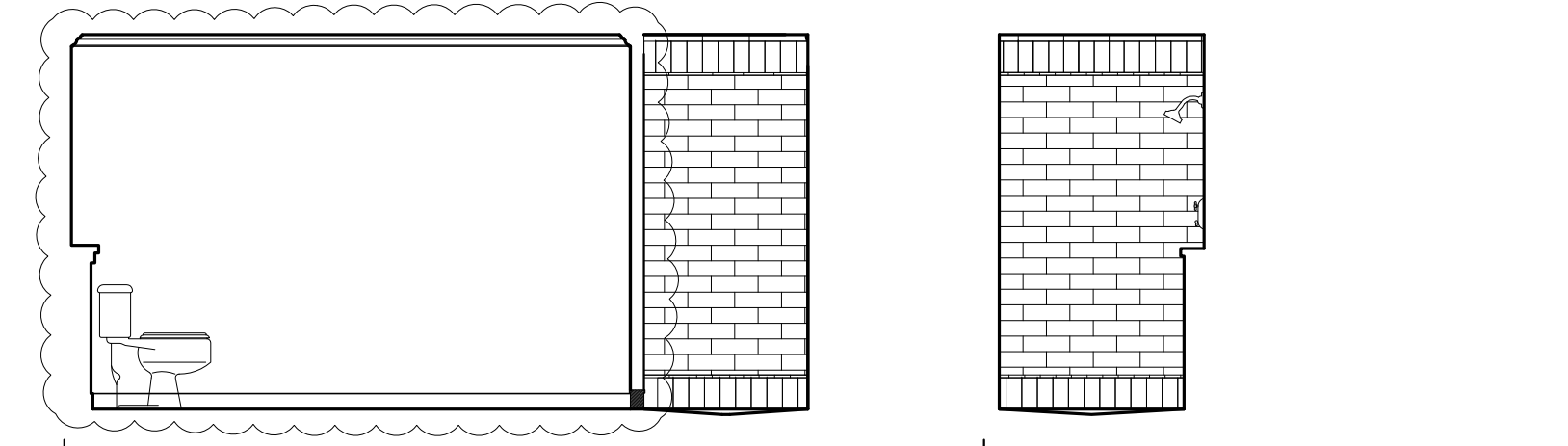


4 | INTERIOR ELEVATION UNIT 201B
1/4"=1'-0"

5 | INTERIOR ELEVATION UNIT 201B
1/4"=1'-0"

6 | INTERIOR ELEVATION UNIT 201B
1/4"=1'-0"

7 | INTERIOR ELEVATION UNIT 201B
1/4"=1'-0"



8 | INTERIOR ELEVATION UNIT 201B
1/4"=1'-0"

9 | INTERIOR ELEVATION UNIT 201B
1/4"=1'-0"

Prepared For:
The Inn at Diamond Cove, LLC.
 PO BOX 3572
 PORTLAND, ME 04101

Interior Designer:
truexcollins
 INTERIORS
 208 BATTERY STREET BURLINGTON, VERMONT 05401 USA
 Phone 802.686.2775 Fax 802.227.1076
 ARCHITECTURE INTERIOR DESIGN@TRUXCOLLINS.COM

Architect:
ARCHETYPE architects
 48 Union Wharf Portland, Maine 04101
 (207) 772-6022 Fax (207) 772-4056

Project:
THE INN AT DIAMOND COVE, LLC
 MCKINLEY COURT
 GREAT DIAMOND ISLAND, MAINE

Revisions:

Date: 04 March 2013
 Scale: As Noted

INTERIOR ELEVATIONS
UNIT 201 B, 210 B