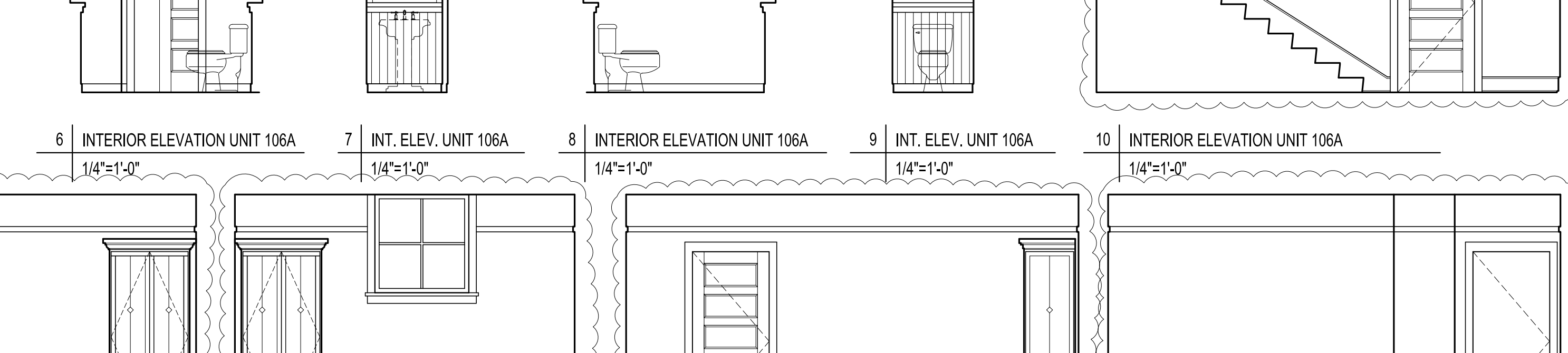
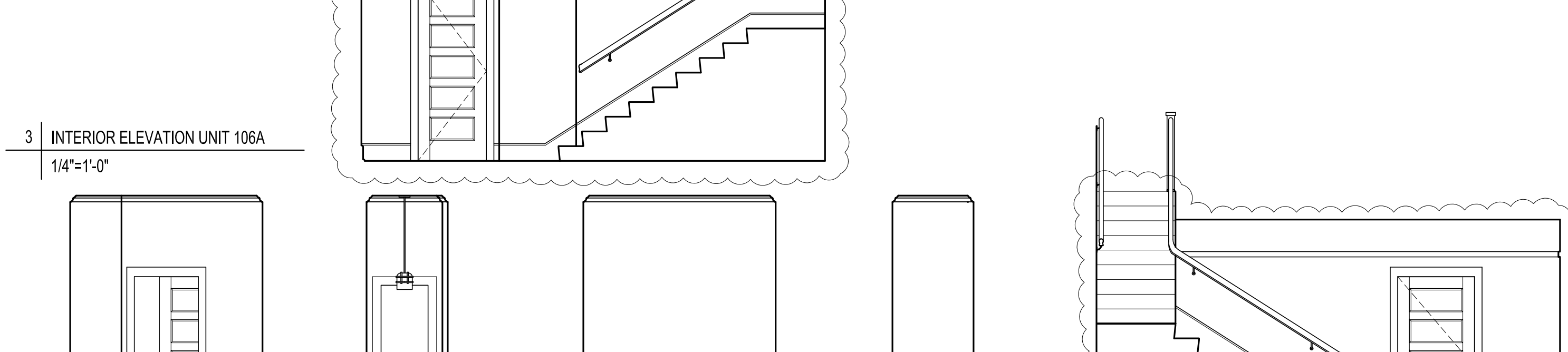
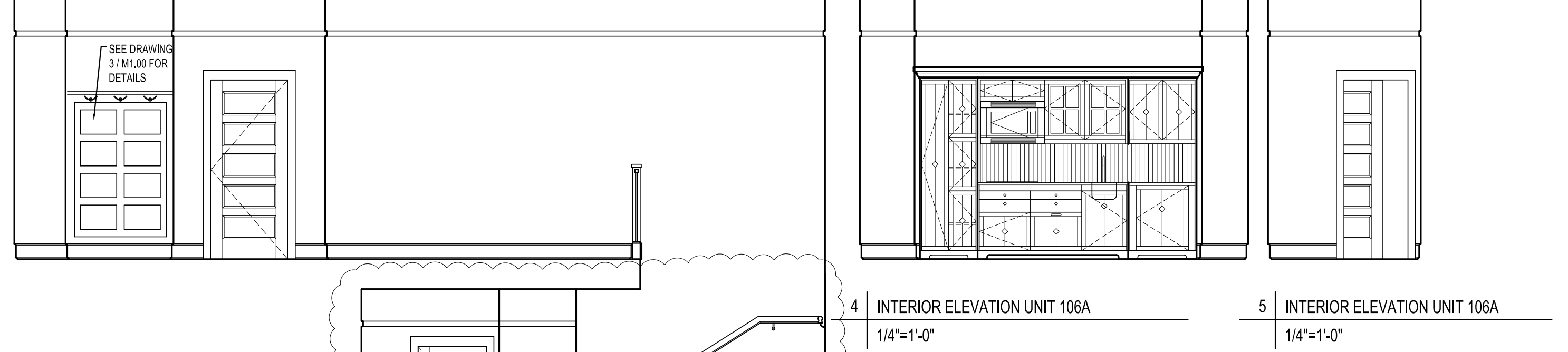
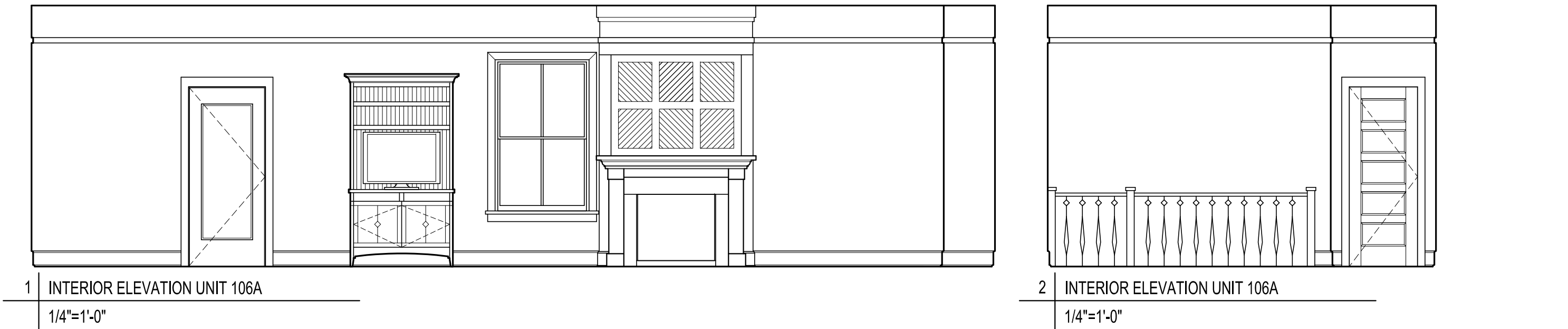
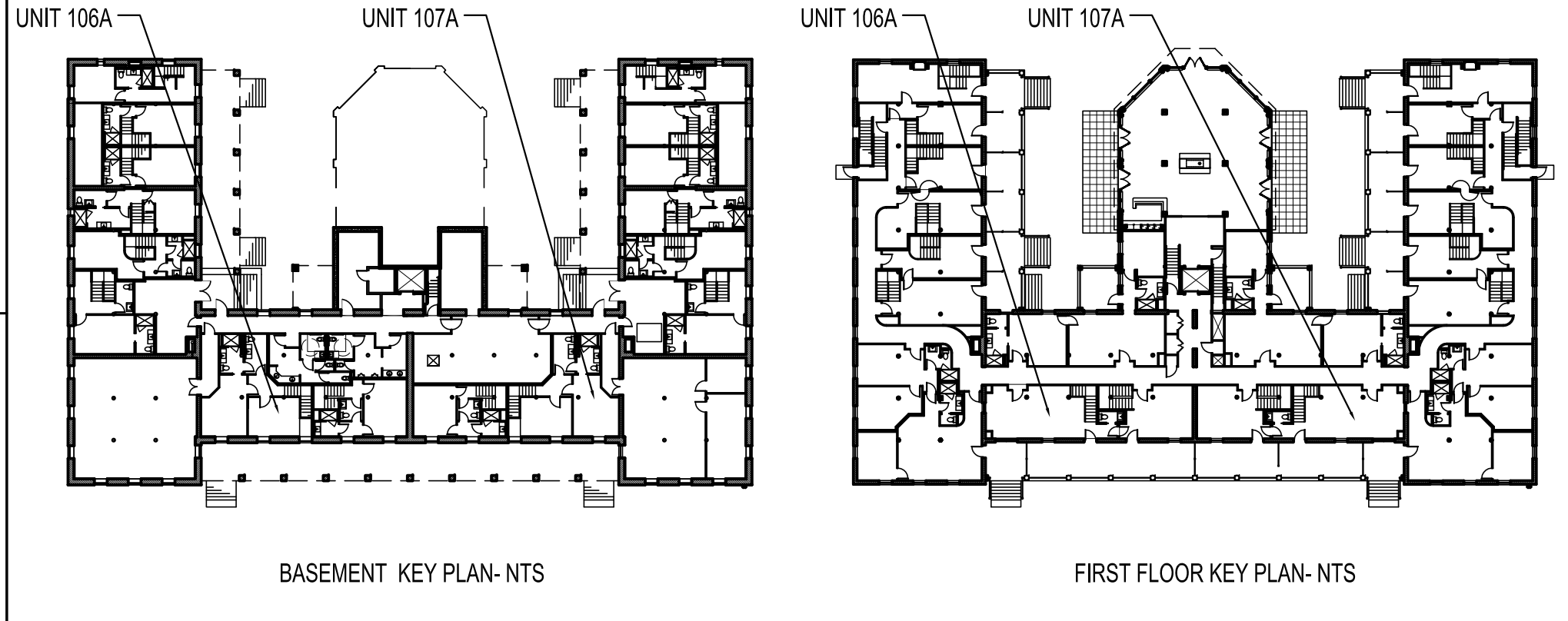


NOTES:  
 -UNIT 106 A SHOWN- 108 A IS MIRRORED  
 -REFER TO M1.00 FOR MILLWORK DETAILS



Interior Designer: **truexcollins** INTERIORS  
 208 BATTERY STREET BURLINGTON, VERMONT 05401 USA  
 Phone 802-688-2775 Fax 802-247-1076  
 ARCHITECTURE INTERIOR DESIGN

Project: **THE INN AT DIAMOND COVE, LLC**  
 48 Union Wharf Portland, Maine 04101  
 McKINLEY COURT GREAT DIAMOND ISLAND, MAINE

Date: 04 March 2013 As Noted  
 Scale: INTERIOR ELEVATIONS  
 UNIT 106A, 108A

Prepared For: **The Inn at Diamond Cove, LLC.**  
 PO BOX 3572 PORTLAND, ME 04101

Revisions: