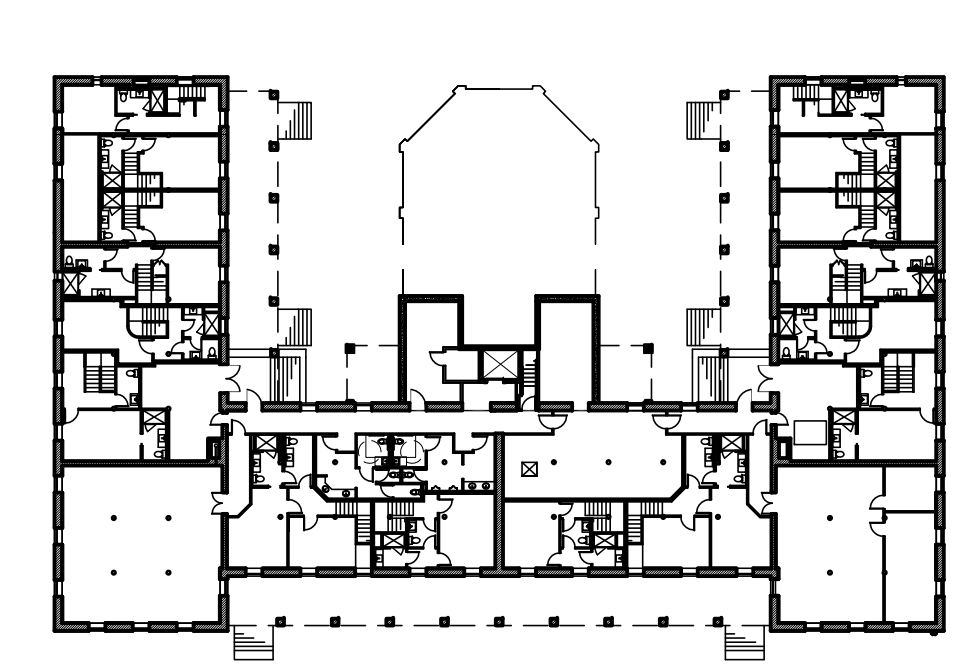
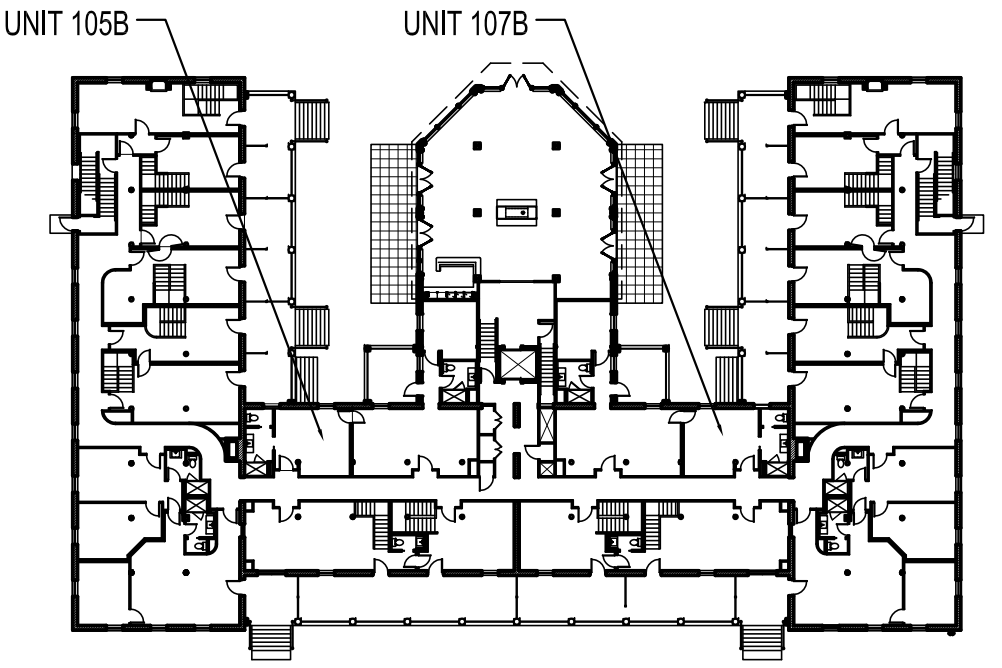


NOTES:
-REFER TO M1.00 FOR
MILLWORK DETAILS



BASEMENT KEY PLAN-NTS



FIRST FLOOR KEY PLAN-NTS

Prepared For:
**The Inn at Diamond
Cove, LLC.**
PO BOX 3572
PORTLAND, ME 04101

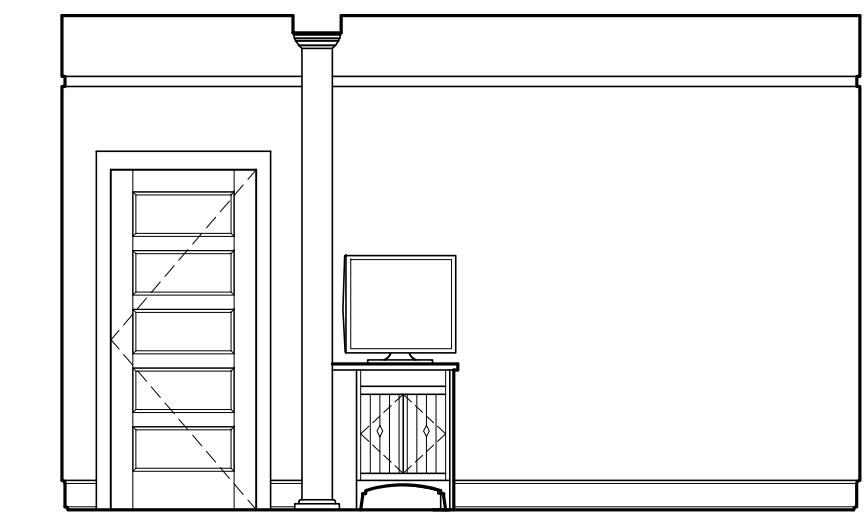
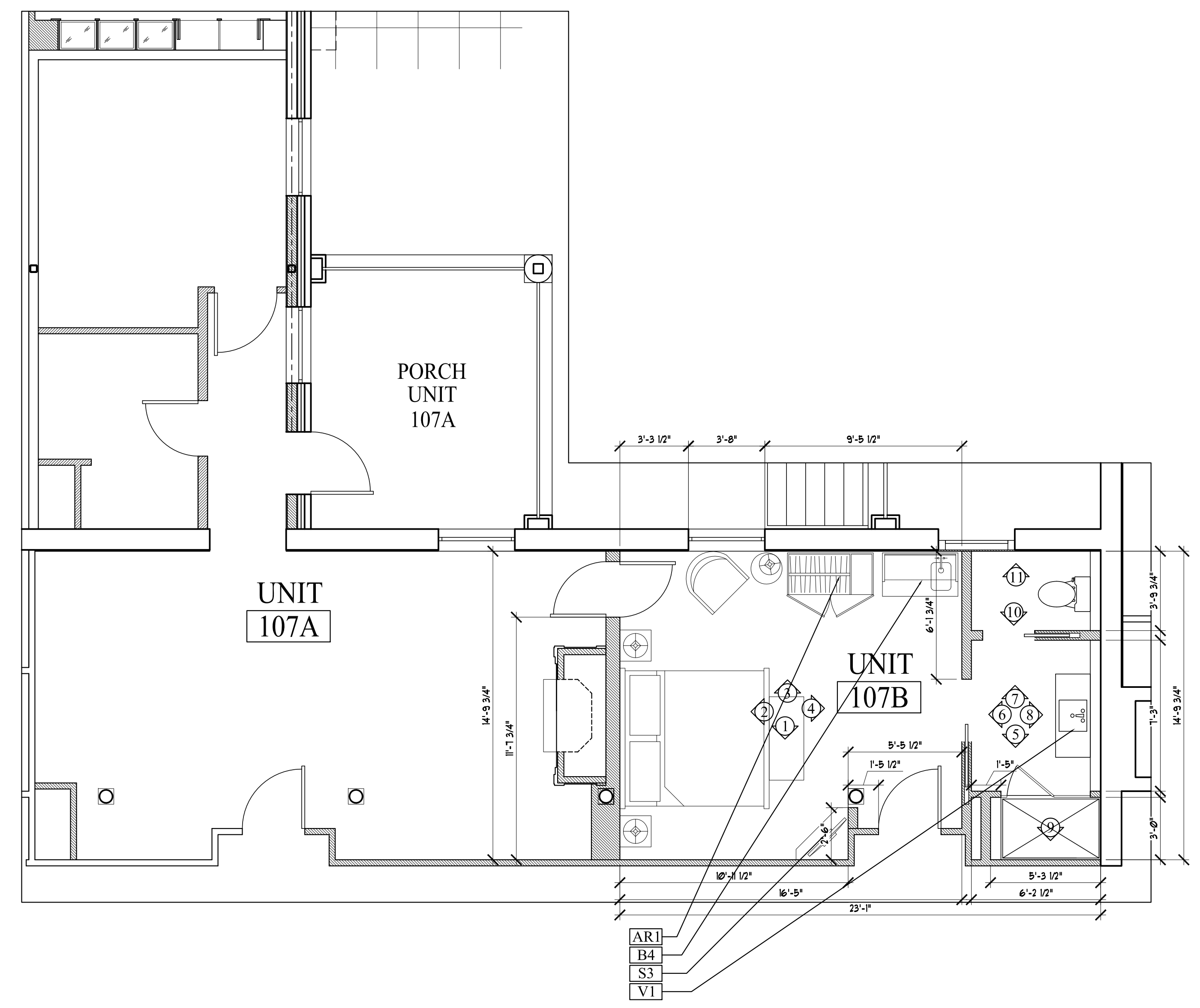
Interior Designer:
truexcollins
INTERIORS
208 BATTERY STREET BURLINGTON, VERMONT 05401 USA
Phone 802.688.2775 ©2012.1076
ARCHITECTURE | INTERIOR DESIGN | truexcollins.com

Architect:
ARCHETYPE
architects
48 Union Wharf Portland, Maine 04101
(207) 772-6022 Fax (207) 772-4056

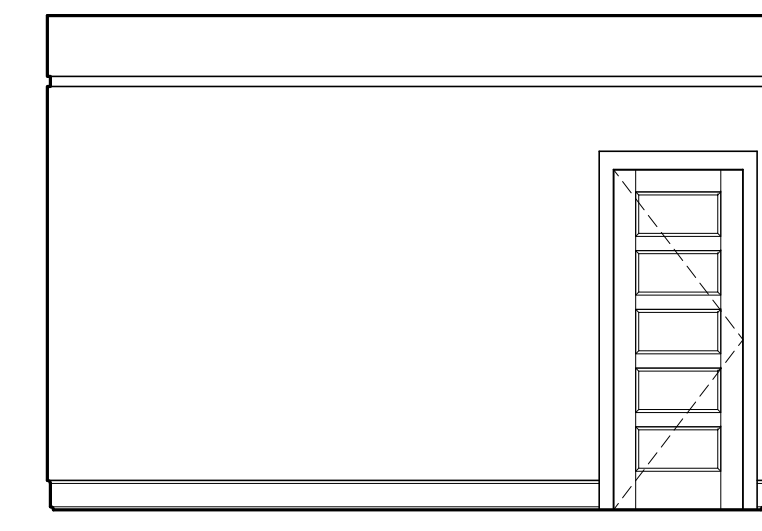
Project:
**THE INN AT
DIAMOND COVE,
LLC**
McKINLEY COURT
GREAT DIAMOND ISLAND, MAINE

Revisions:

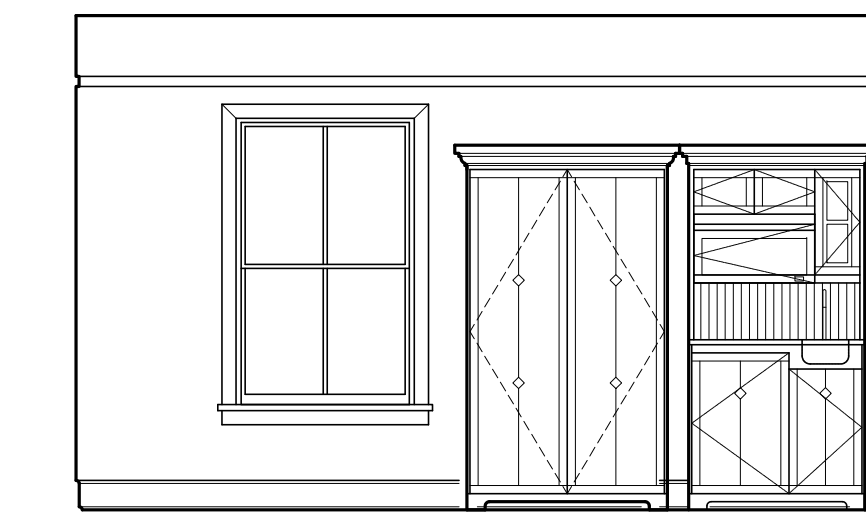
Date: 04 March 2013
Scale: As Noted
**INTERIOR
ELEVATIONS
UNIT 107B**



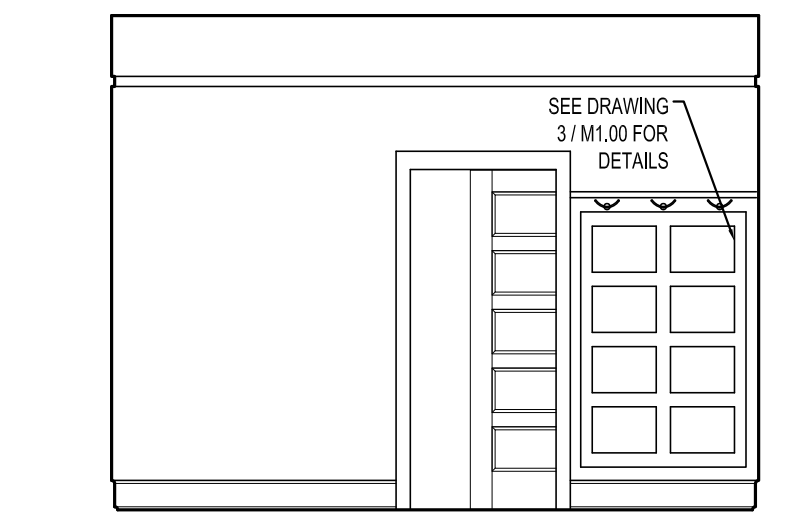
1 | INTERIOR ELEVATION UNIT 107B
1/4"=1'-0"



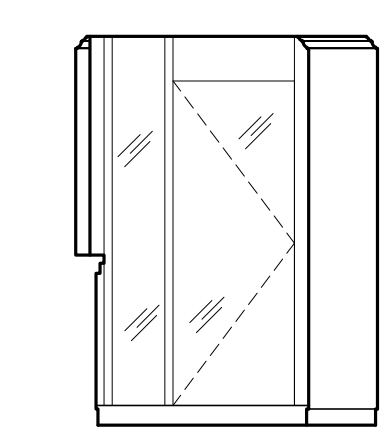
2 | INTERIOR ELEVATION UNIT 107B
1/4"=1'-0"



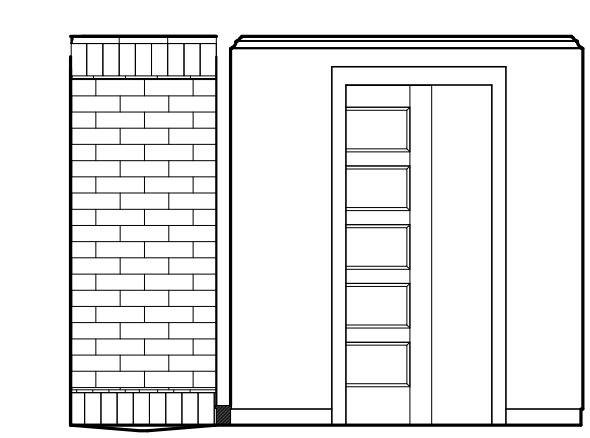
3 | INTERIOR ELEVATION UNIT 107B
1/4"=1'-0"



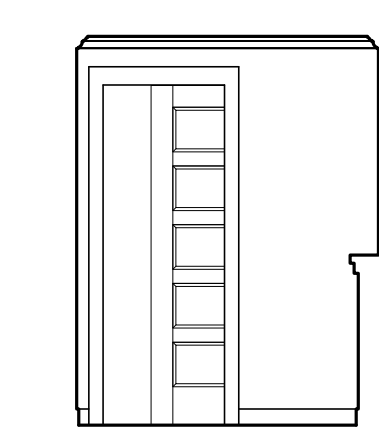
4 | INTERIOR ELEVATION UNIT 107B
1/4"=1'-0"



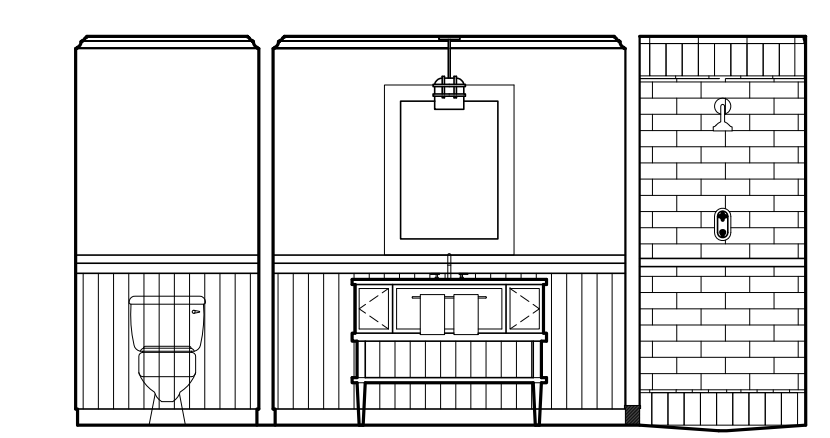
5 | INTERIOR ELEVATION UNIT 107B
1/4"=1'-0"



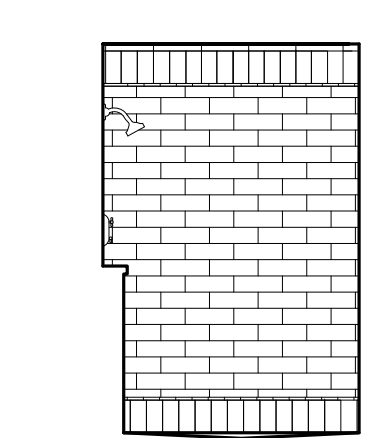
6 | INTERIOR ELEVATION UNIT 107B
1/4"=1'-0"



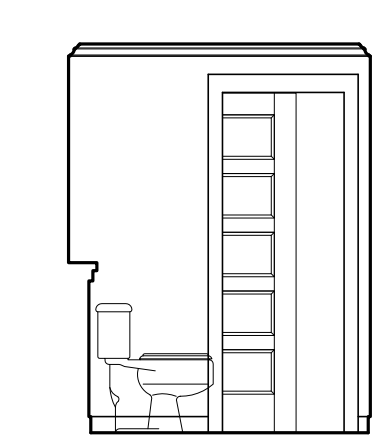
7 | INTERIOR ELEVATION UNIT 107B
1/4"=1'-0"



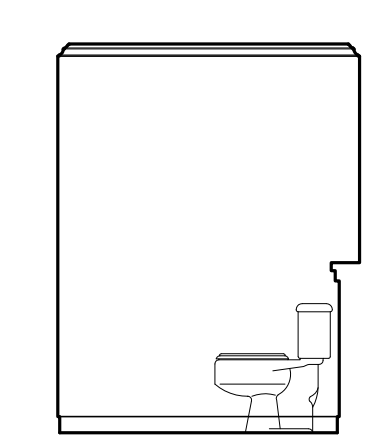
8 | INTERIOR ELEVATION UNIT 107B
1/4"=1'-0"



9 | INTERIOR ELEVATION UNIT 107B
1/4"=1'-0"



10 | INTERIOR ELEVATION UNIT 107B
1/4"=1'-0"



11 | INTERIOR ELEVATION UNIT 107B
1/4"=1'-0"