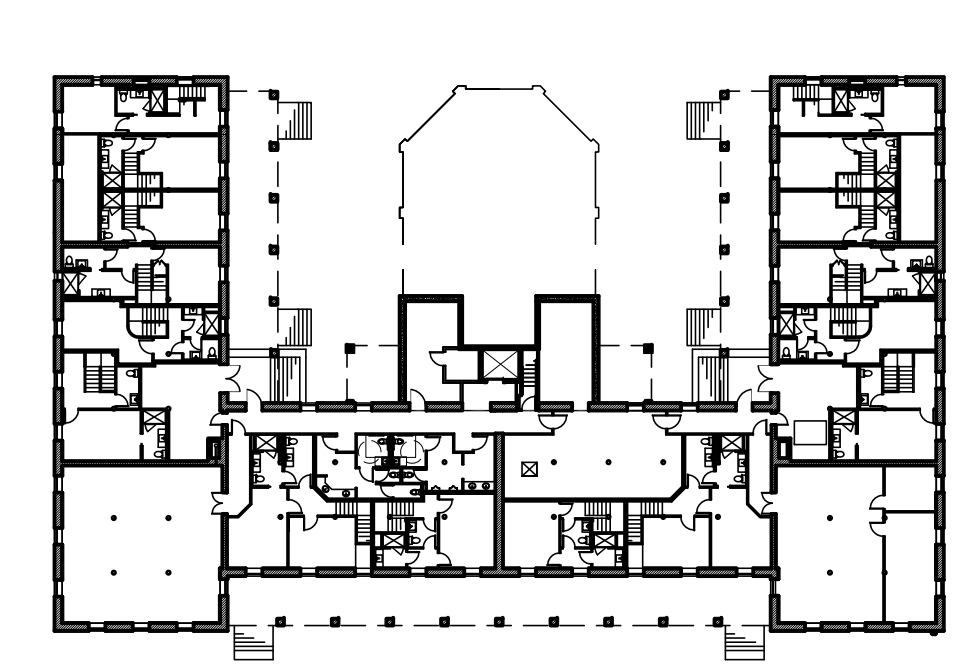
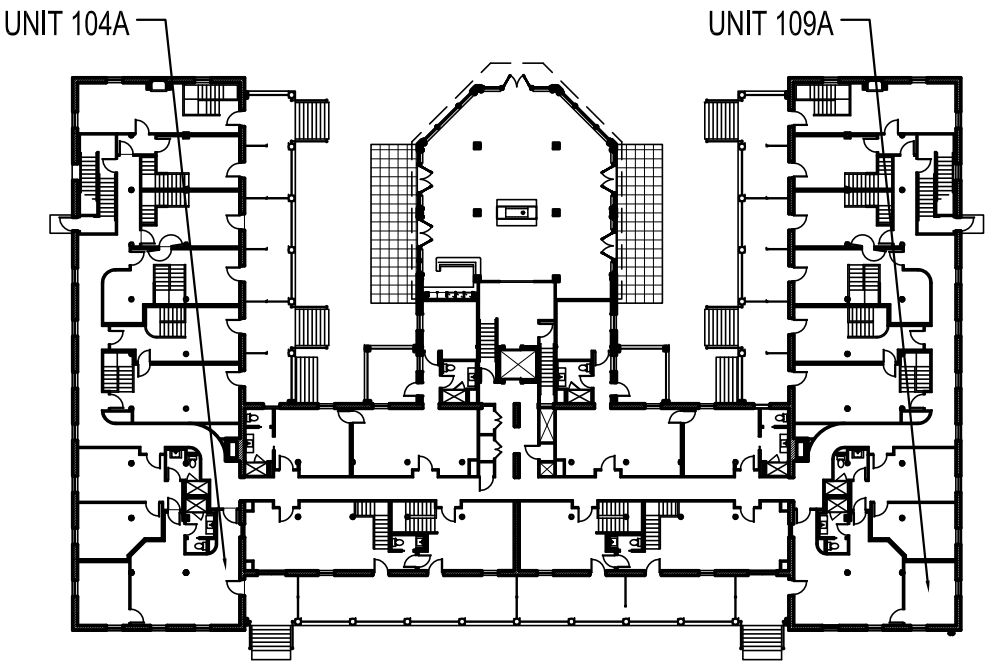


NOTES:
 -UNIT 104 A SHOWN- 109 A IS MIRRORED
 -REFER TO M1.00 FOR MILLWORK DETAILS



BASEMENT KEY PLAN-NTS



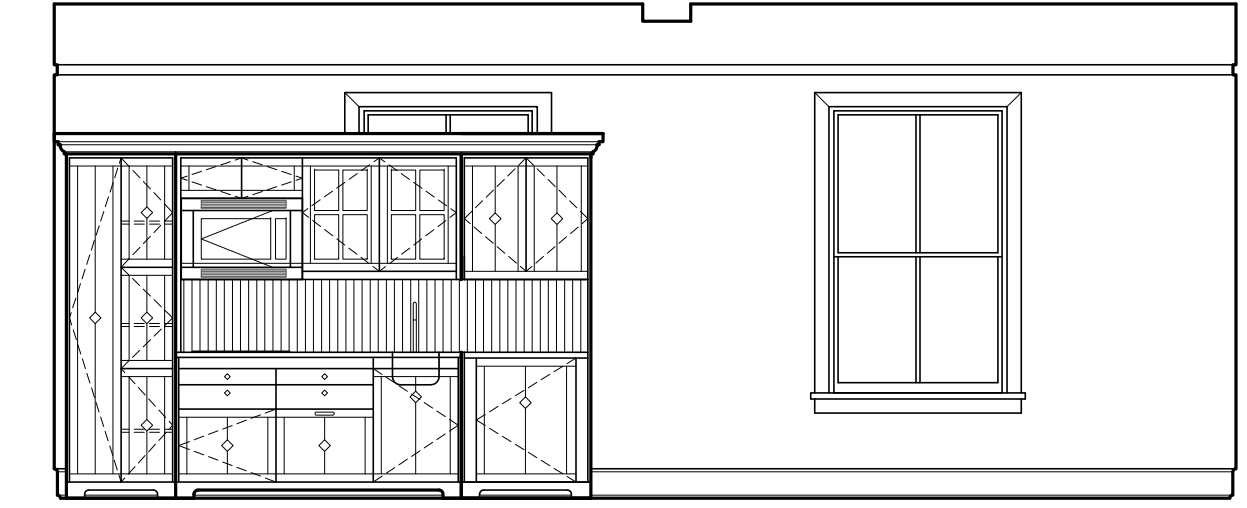
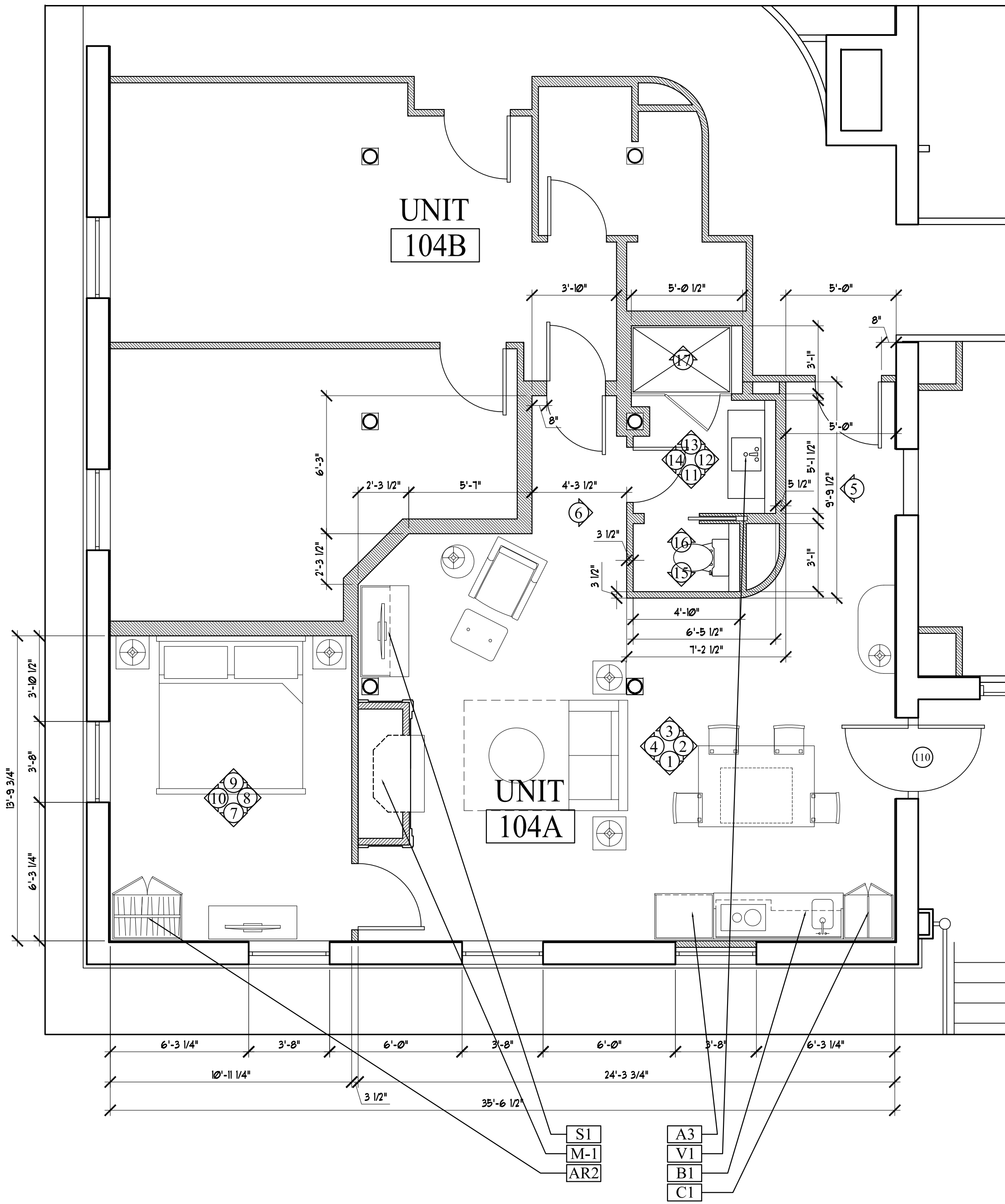
FIRST FLOOR KEY PLAN-NTS

Prepared For:
The Inn at Diamond Cove, LLC.
 PO BOX 3572
 PORTLAND, ME 04101

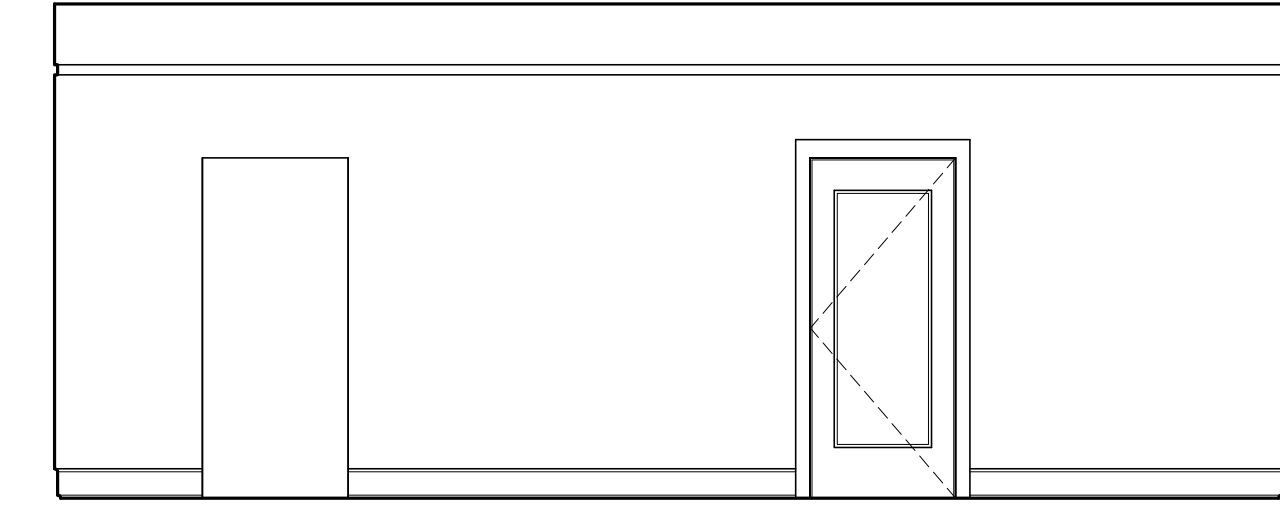
Interior Designer:
truexcollins
 INTERIORS
 208 BATTERY STREET BURLINGTON, VERMONT 05401 USA
 Phone 802.688.2775 @30.227.1076
 ARCHITECTURE INTERIOR DESIGN@TRUXXCOLLINS.COM

Architect:
ARCHETYPE architects
 48 Union Wharf Portland, Maine 04101
 (207) 772-6022 Fax (207) 772-4056

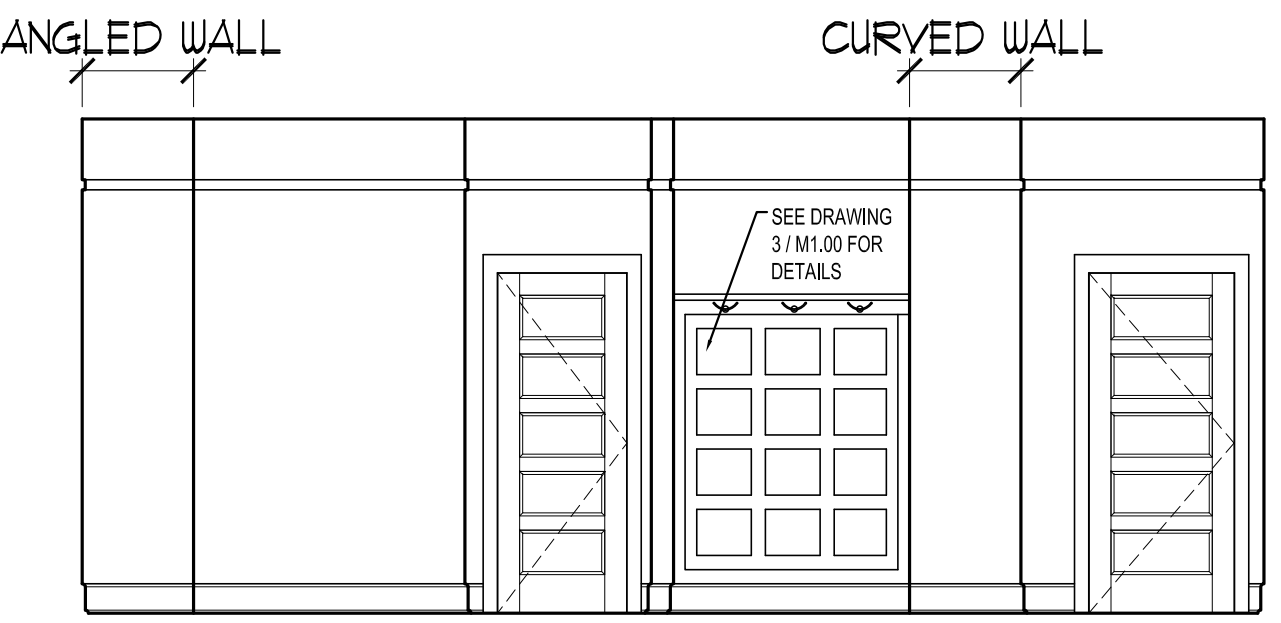
Project:
THE INN AT DIAMOND COVE, LLC
 McKINLEY COURT
 GREAT DIAMOND ISLAND, MAINE



1 | INTERIOR ELEVATION UNIT 104A
 1/4"=1'-0"



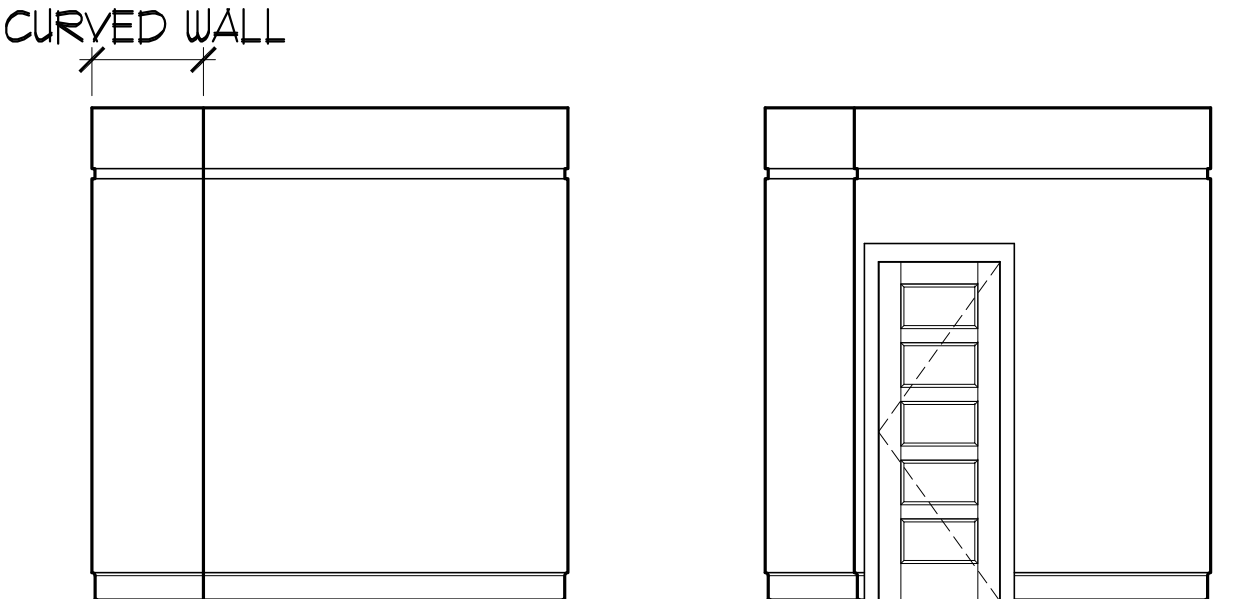
2 | INTERIOR ELEVATION UNIT 104A
 1/4"=1'-0"



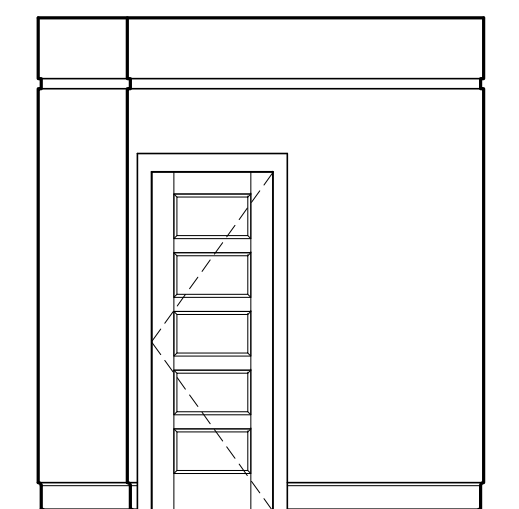
3 | INTERIOR ELEVATION UNIT 104A
 1/4"=1'-0"



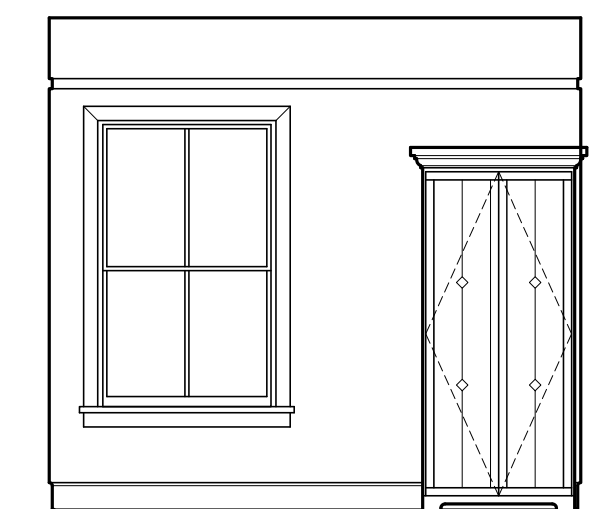
4 | INTERIOR ELEVATION UNIT 104A
 1/4"=1'-0"



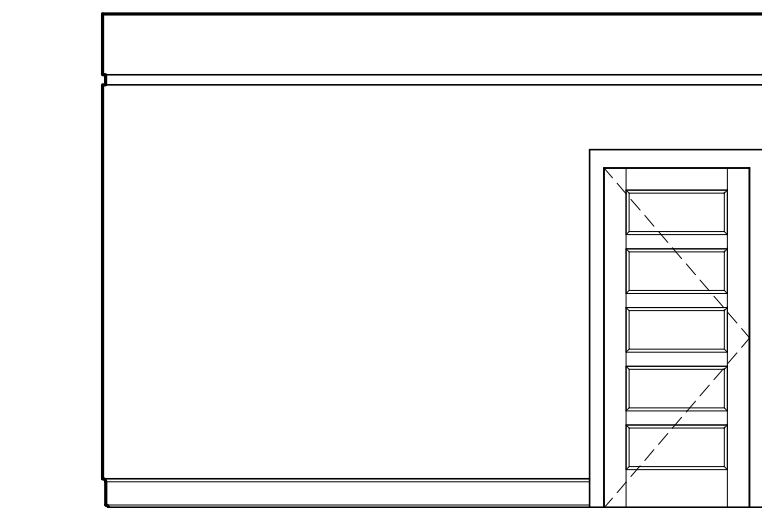
5 | INTERIOR ELEVATION UNIT 104A
 1/4"=1'-0"



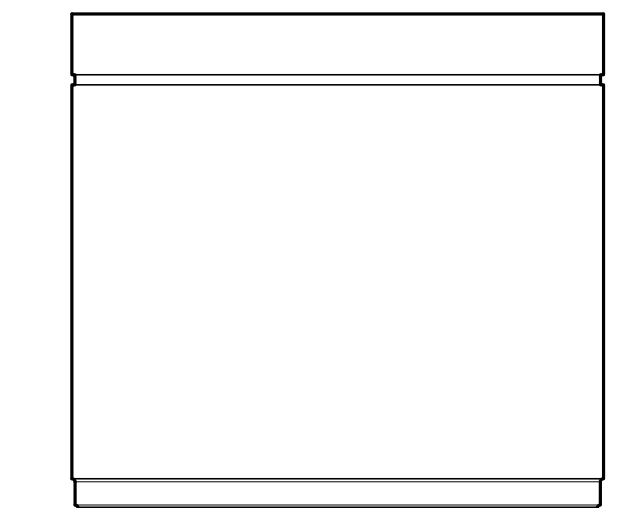
6 | INTERIOR ELEVATION UNIT 104A
 1/4"=1'-0"



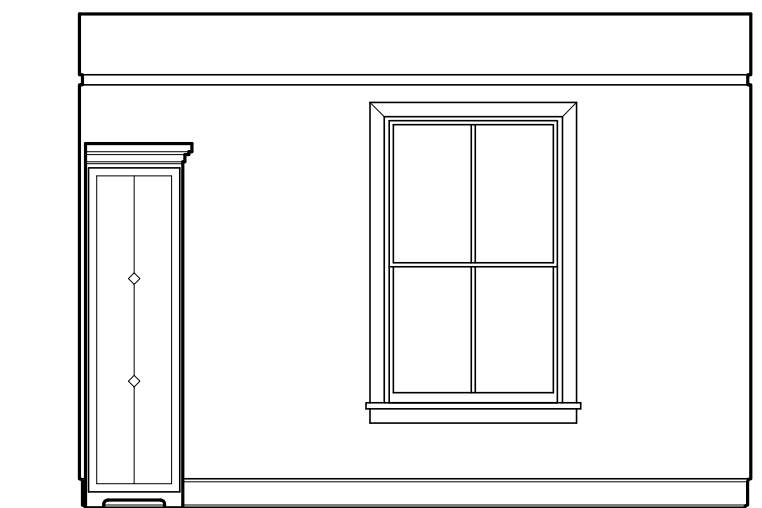
7 | INTERIOR ELEVATION UNIT 104A
 1/4"=1'-0"



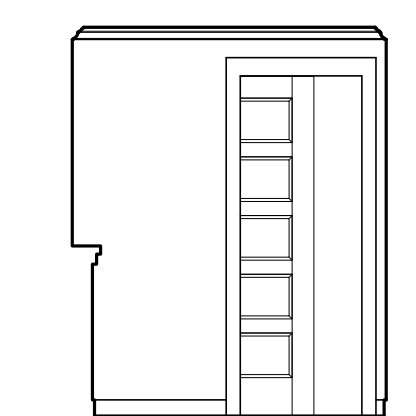
8 | INTERIOR ELEVATION UNIT 104A
 1/4"=1'-0"



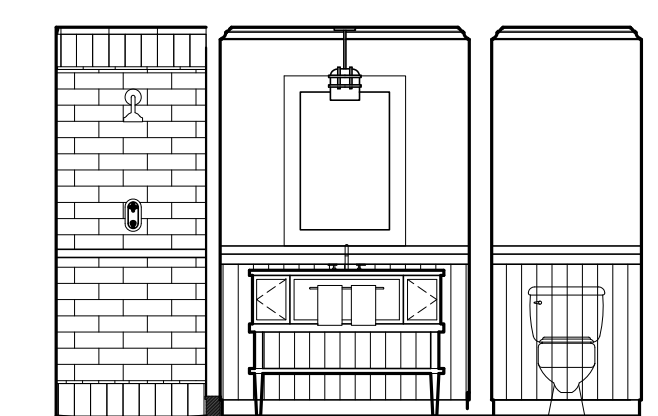
9 | INTERIOR ELEVATION UNIT 104A
 1/4"=1'-0"



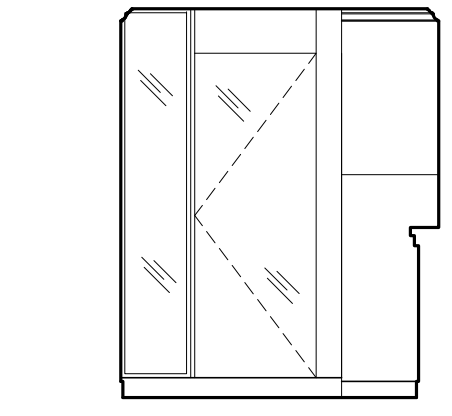
10 | INTERIOR ELEVATION UNIT 104A
 1/4"=1'-0"



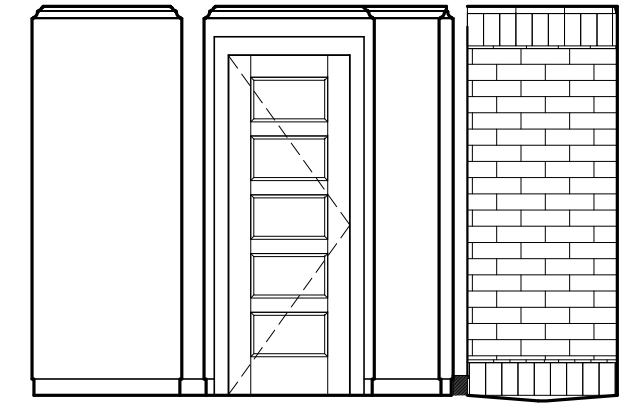
11 | INTERIOR ELEVATION UNIT 104B
 1/4"=1'-0"



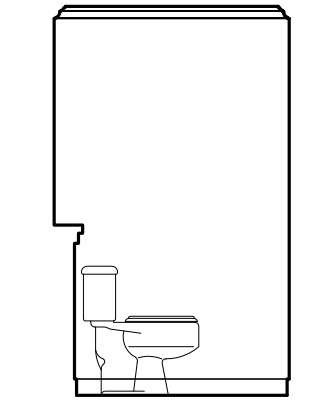
12 | INTERIOR ELEVATION UNIT 104B
 1/4"=1'-0"



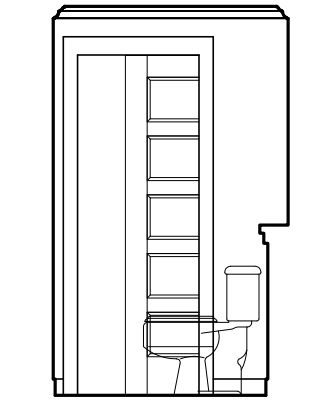
13 | INTERIOR ELEVATION UNIT 104B
 1/4"=1'-0"



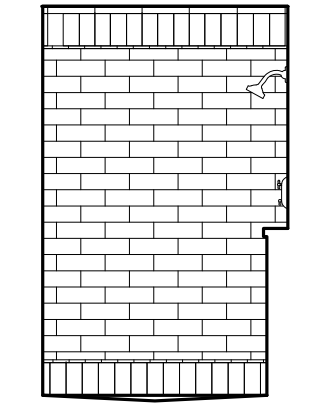
14 | INTERIOR ELEVATION UNIT 104B
 1/4"=1'-0"



15 | INTERIOR ELEVATION UNIT 104B
 1/4"=1'-0"



16 | INTERIOR ELEVATION UNIT 104B
 1/4"=1'-0"



17 | INTERIOR ELEVATION UNIT 104B
 1/4"=1'-0"

Revisions:

Date: 04 March 2013
 Scale: As Noted

INTERIOR ELEVATIONS
UNIT 104A, 109A

A9.08