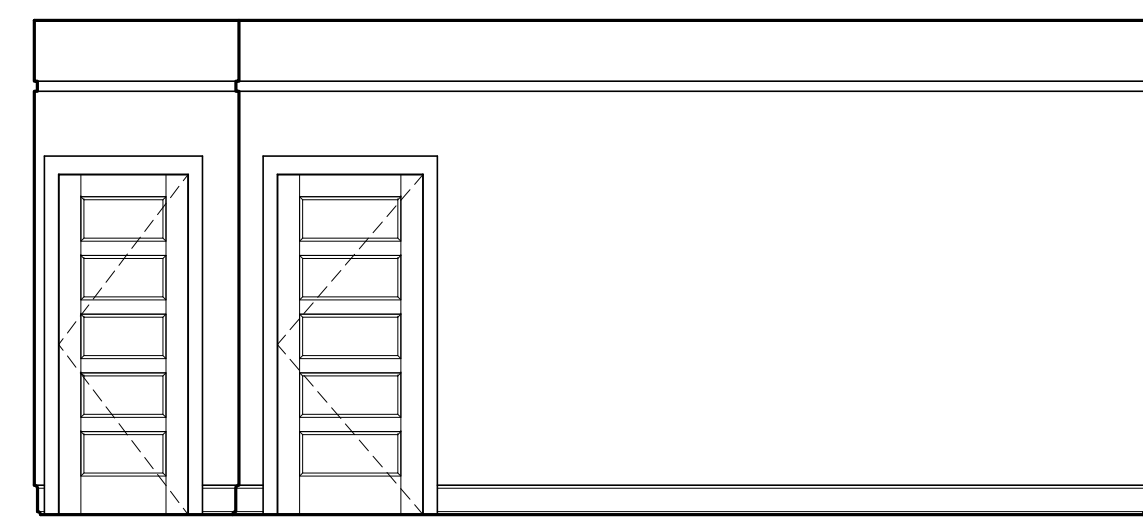
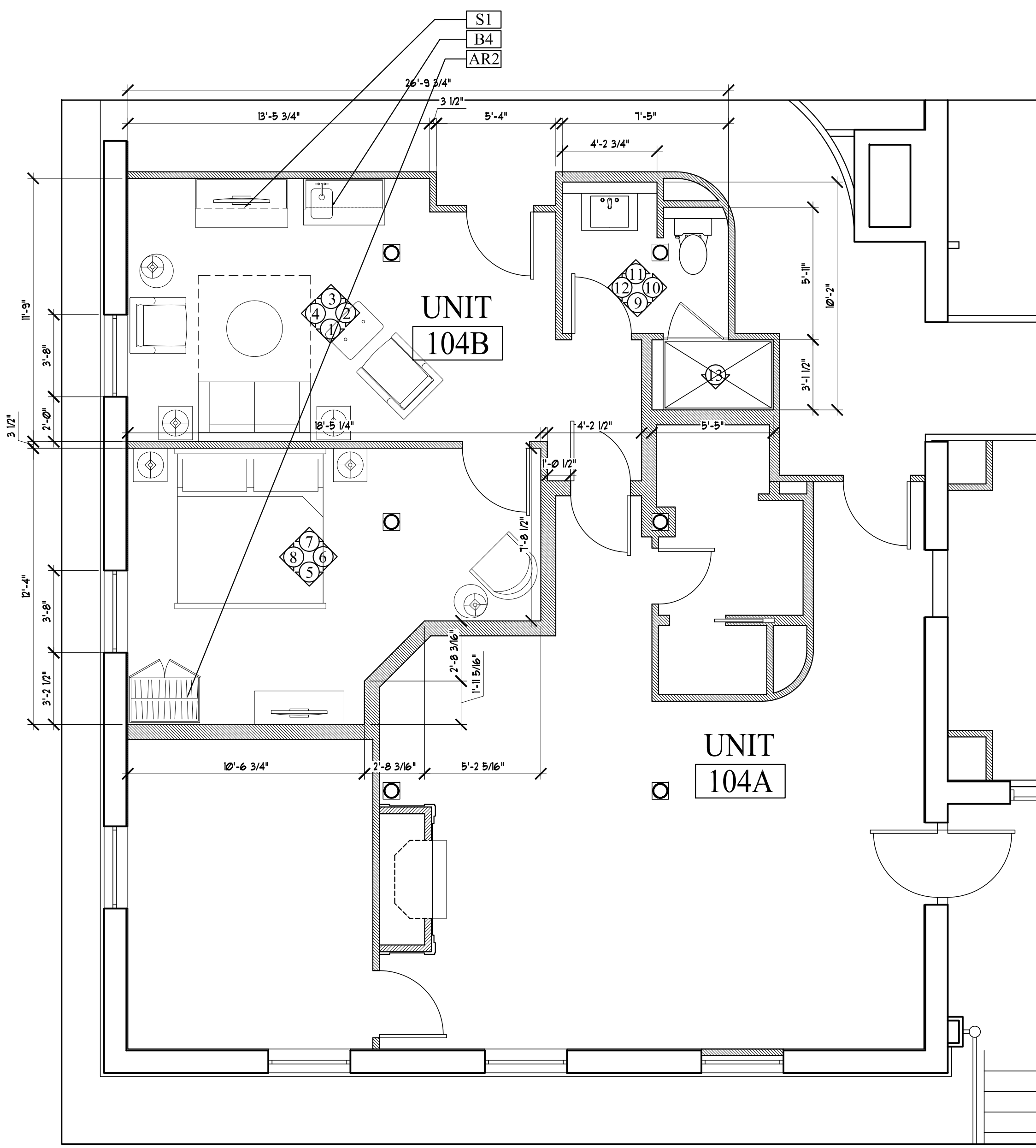
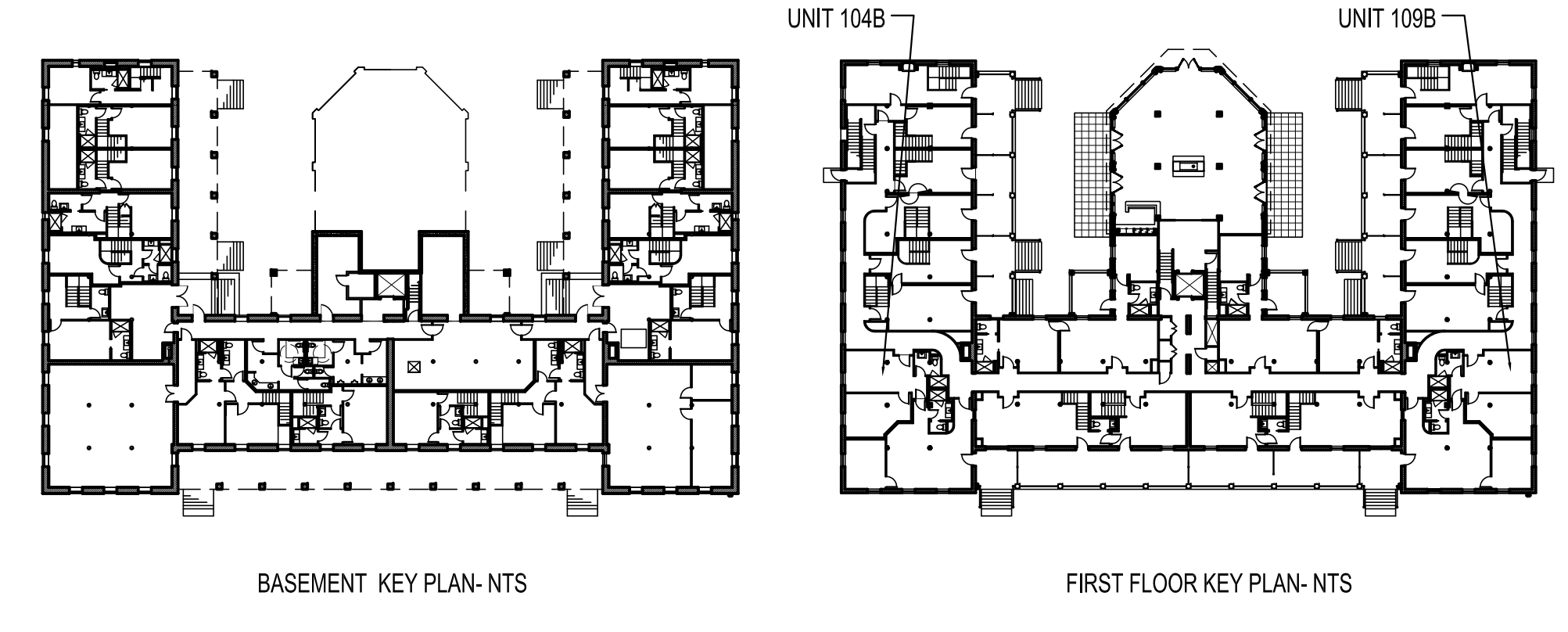
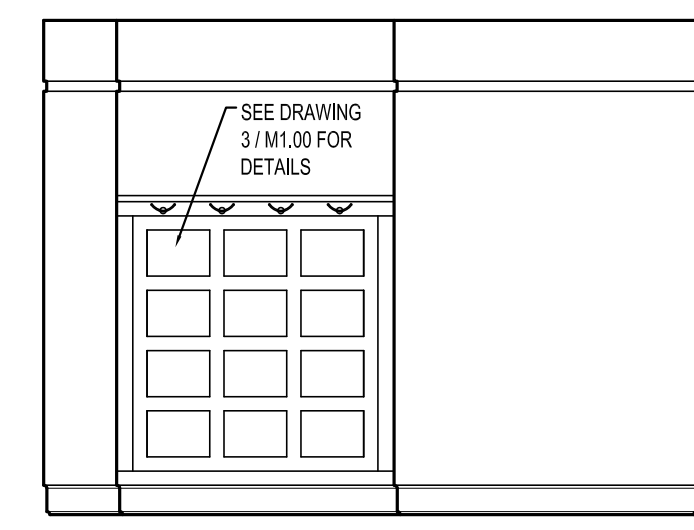


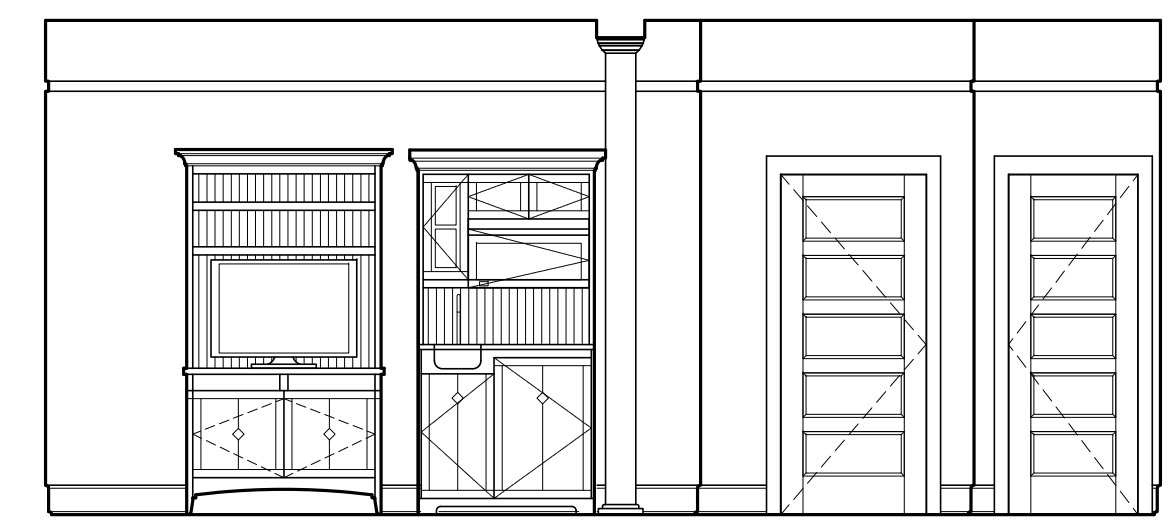
NOTES:  
 -UNIT 104 B SHOWN- 109 B IS MIRRORED  
 -REFER TO M1.00 FOR MILLWORK DETAILS



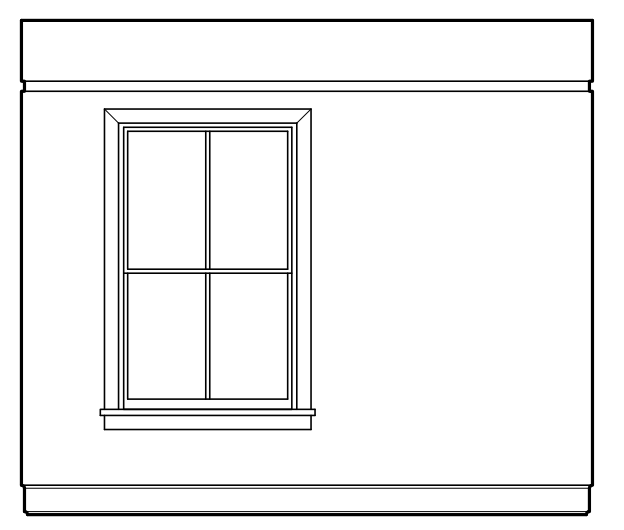
1 | INTERIOR ELEVATION UNIT 104B  
 1/4"=1'-0"



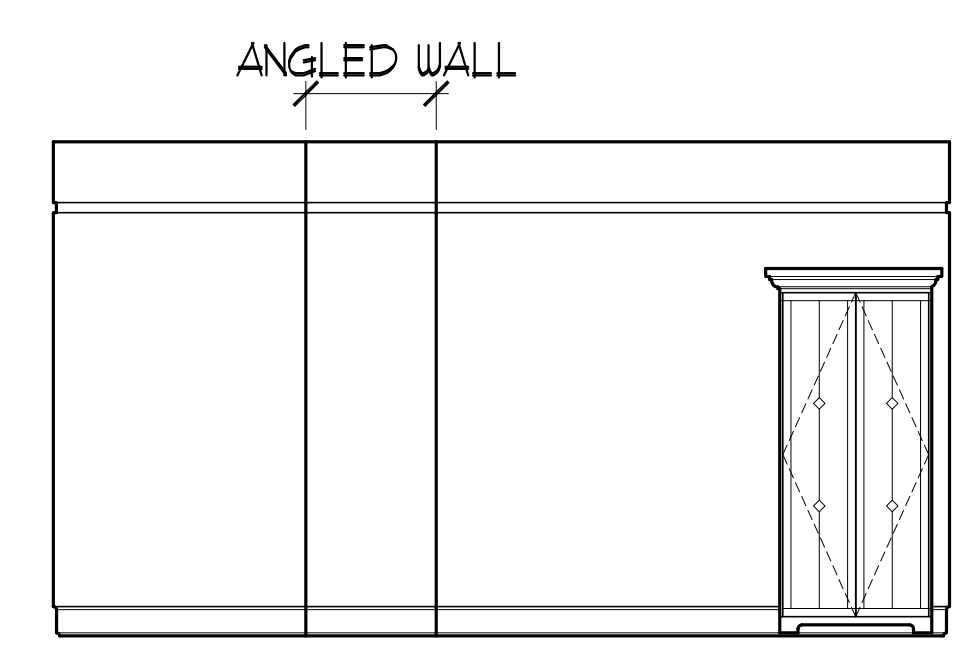
2 | INTERIOR ELEVATION UNIT 104B  
 1/4"=1'-0"



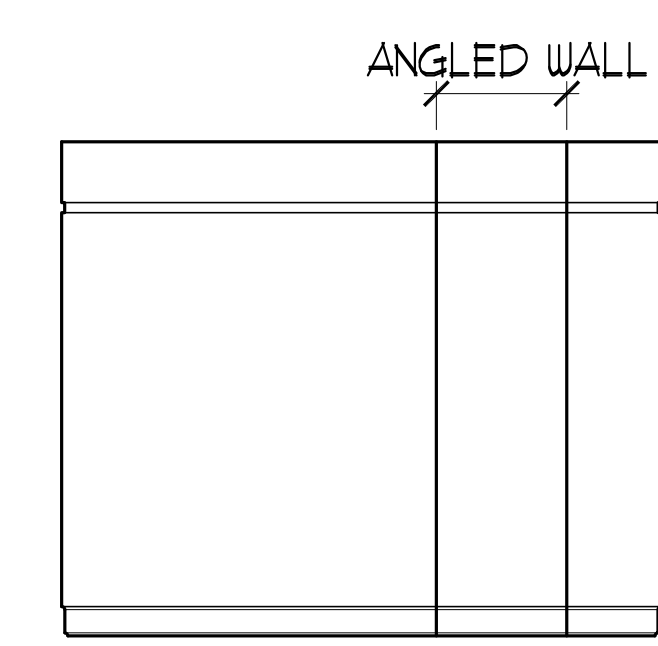
3 | INTERIOR ELEVATION UNIT 104B  
 1/4"=1'-0"



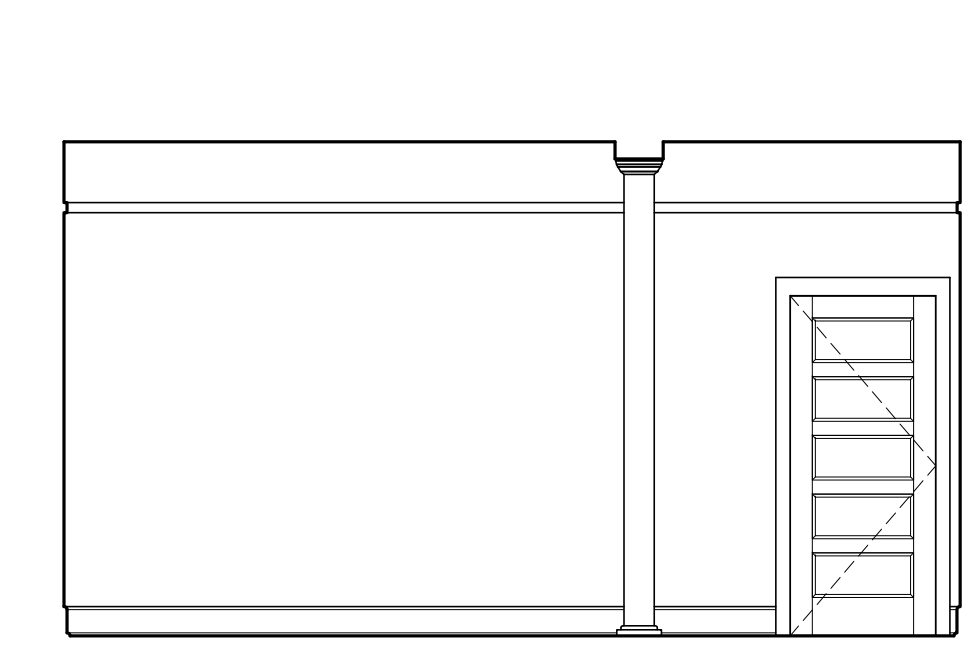
4 | INTERIOR ELEVATION UNIT 104B  
 1/4"=1'-0"



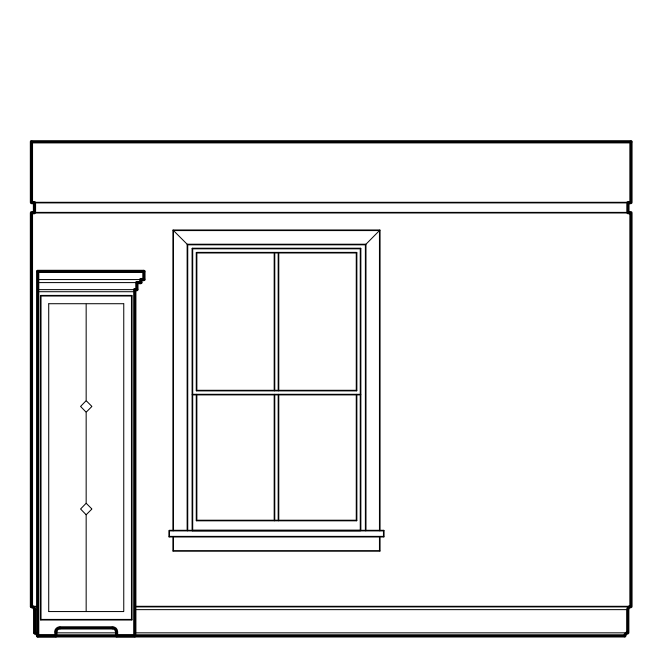
5 | INTERIOR ELEVATION UNIT 104B  
 1/4"=1'-0"



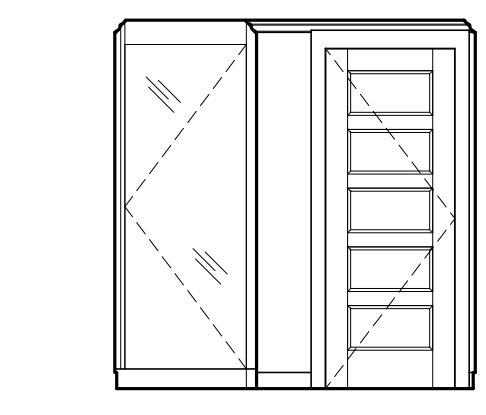
6 | INTERIOR ELEVATION UNIT 104B  
 1/4"=1'-0"



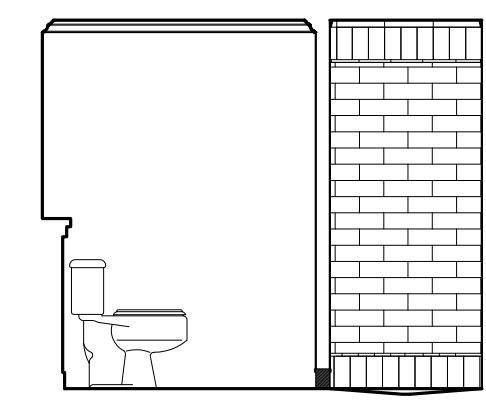
7 | INTERIOR ELEVATION UNIT 104B  
 1/4"=1'-0"



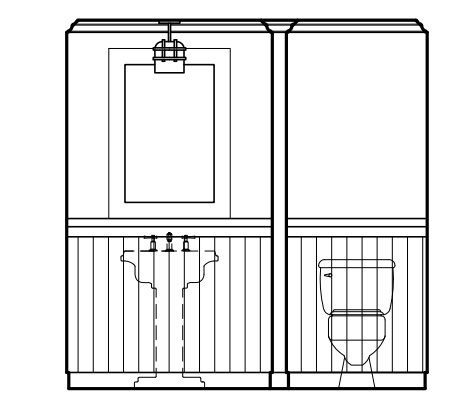
8 | INTERIOR ELEVATION UNIT 104B  
 1/4"=1'-0"



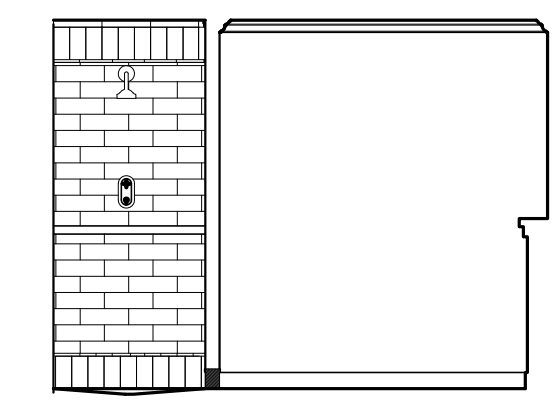
9 | INTERIOR ELEVATION UNIT 104B  
 1/4"=1'-0"



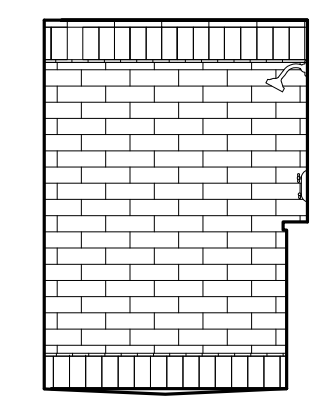
10 | INTERIOR ELEVATION UNIT 104B  
 1/4"=1'-0"



11 | INTERIOR ELEVATION UNIT 104B  
 1/4"=1'-0"



12 | INTERIOR ELEVATION UNIT 104B  
 1/4"=1'-0"



13 | INTERIOR ELEVATION UNIT 104B  
 1/4"=1'-0"

Prepared For:  
**The Inn at Diamond Cove, LLC.**  
 PO BOX 3572  
 PORTLAND, ME 04101

Interior Designer:  
**truexcollins**  
 INTERIORS  
 208 BATTERY STREET BURLINGTON, VERMONT 05401 USA  
 Phone 802-688-2775 ©2013 TRU  
 ARCHITECTURE INTERIOR DESIGN TRU

Architect:  
**ARCHETYPE architects**  
 48 Union Wharf Portland, Maine 04101  
 (207) 772-6022 Fax (207) 772-4056

Project:  
**THE INN AT DIAMOND COVE, LLC**  
 McKINLEY COURT  
 GREAT DIAMOND ISLAND, MAINE

Revisions:

Date: 04 March 2013  
 Scale: As Noted  
**INTERIOR ELEVATIONS**  
**UNIT 104B, 109B**