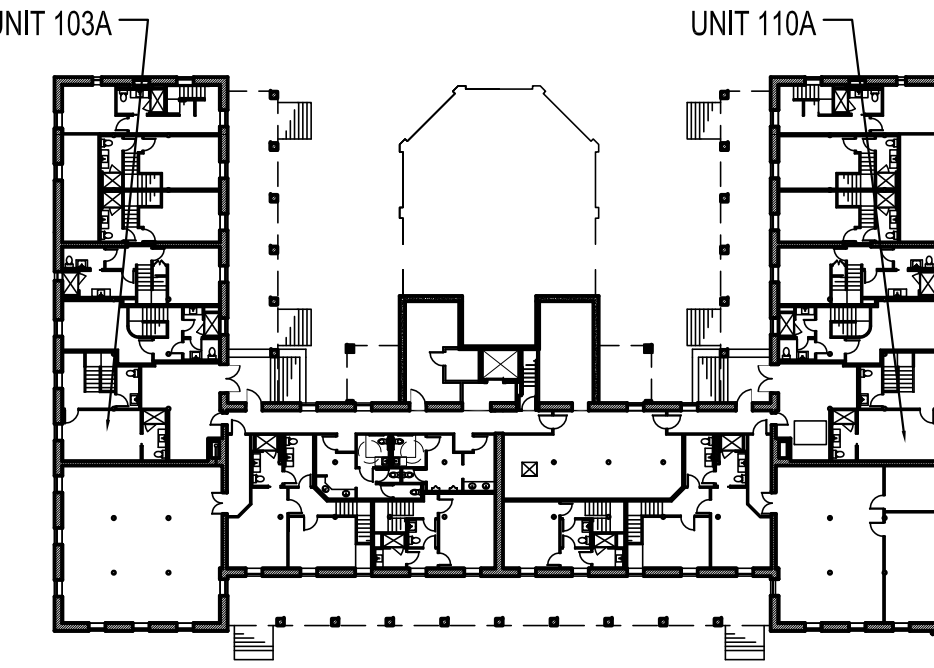
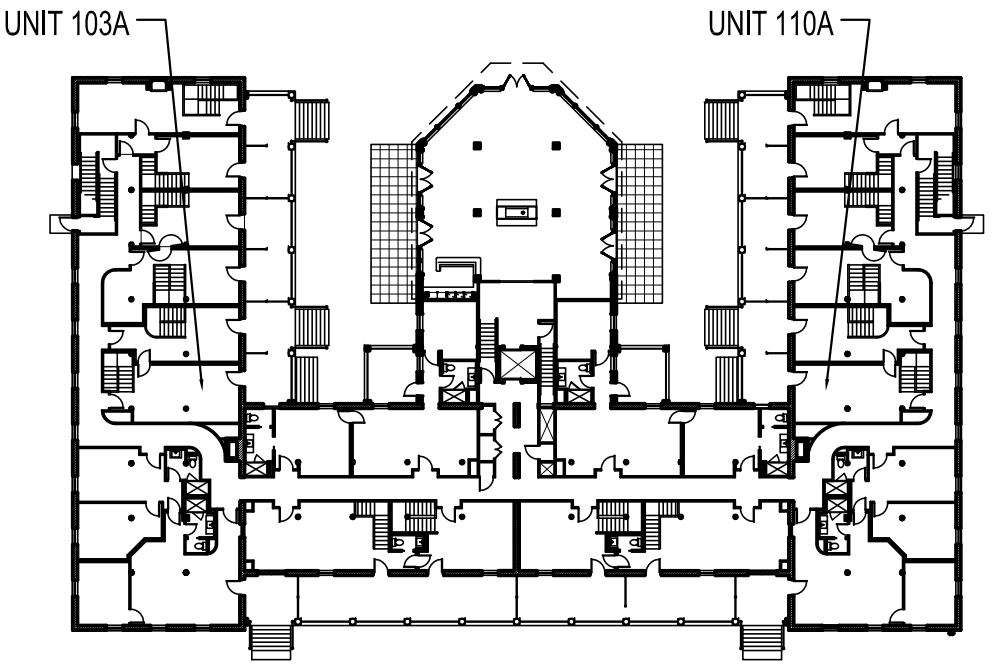


NOTES:
 -UNIT 103 A SHOWN- 110 A IS MIRRORED
 -REFER TO M1.00 FOR MILLWORK DETAILS



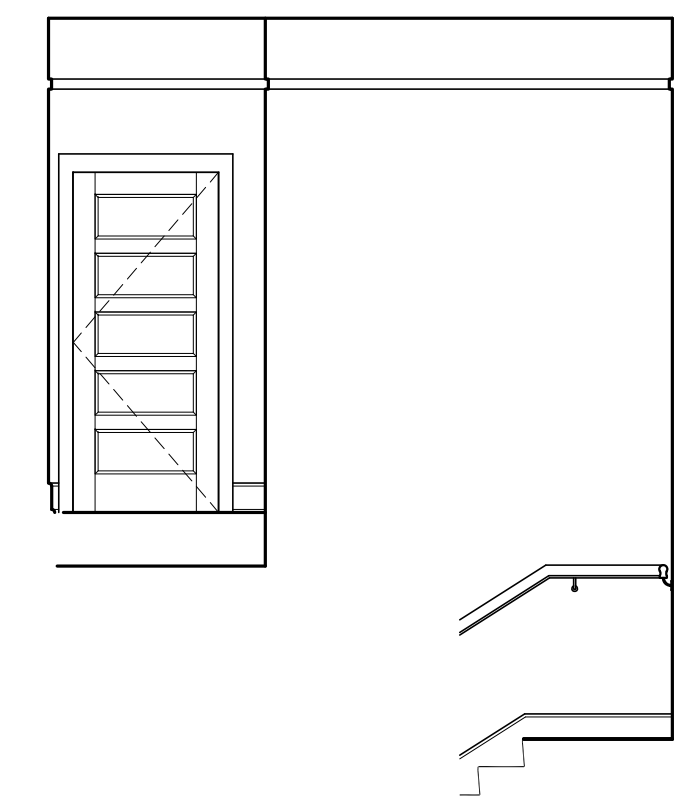
BASEMENT KEY PLAN-NTS



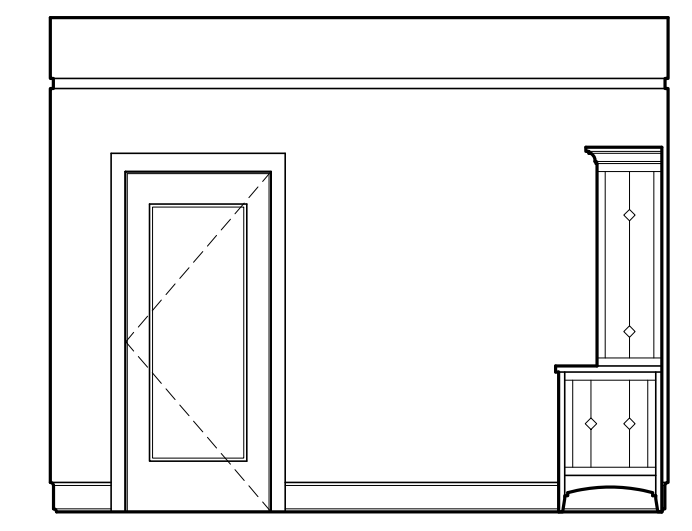
FIRST FLOOR KEY PLAN-NTS



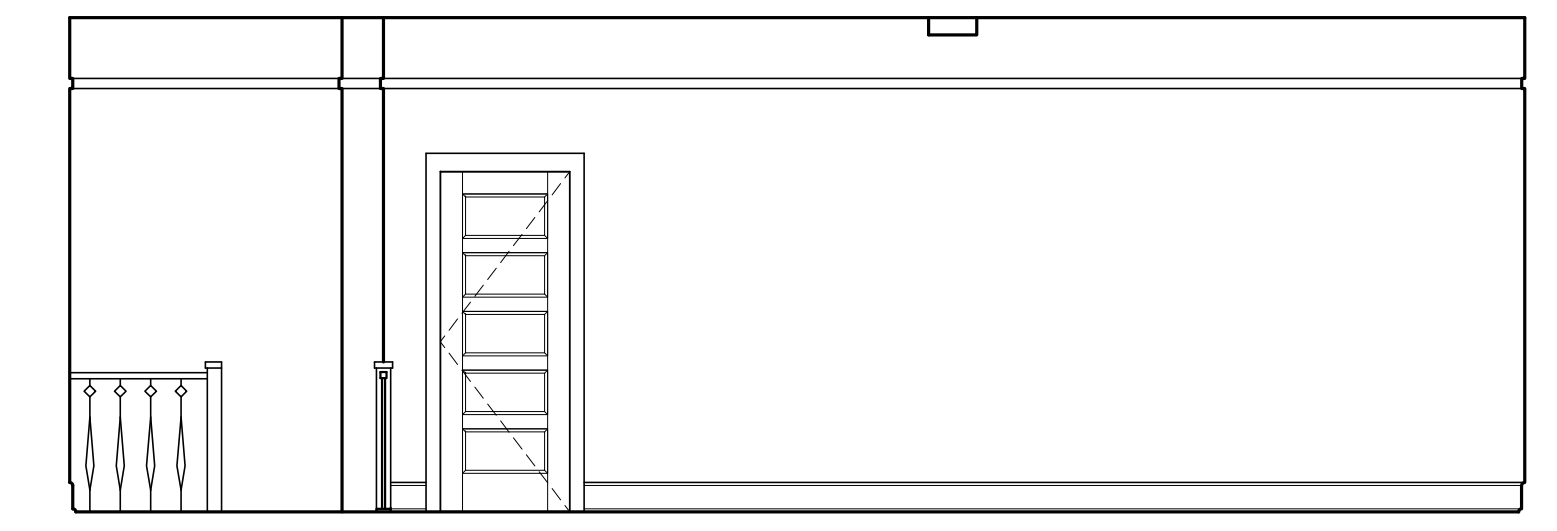
1 INTERIOR ELEVATION UNIT 103A
 1/4"=1'-0"



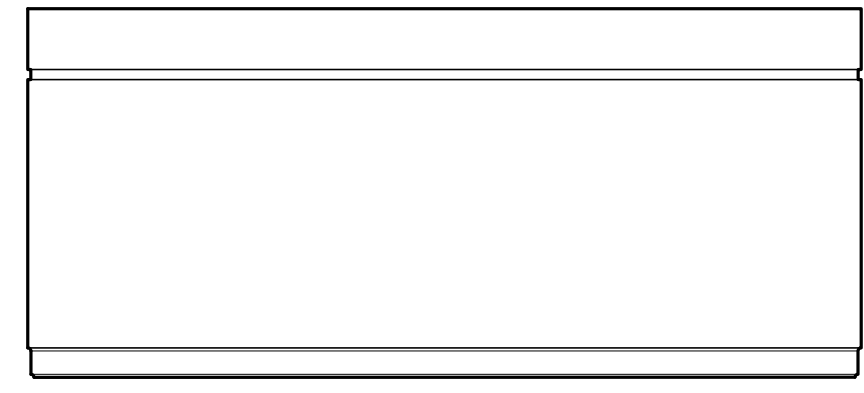
4 INTERIOR ELEVATION UNIT 103A
 1/4"=1'-0"



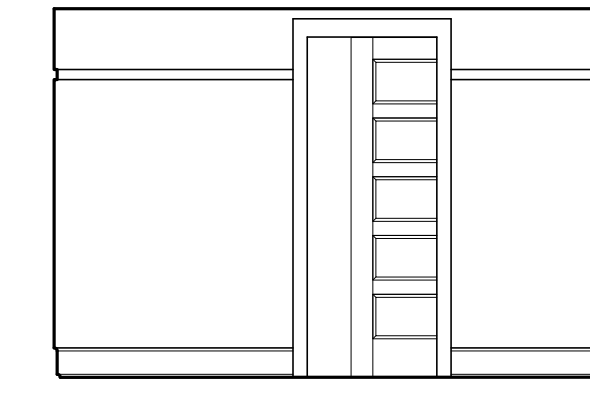
2 INTERIOR ELEVATION UNIT 103A
 1/4"=1'-0"



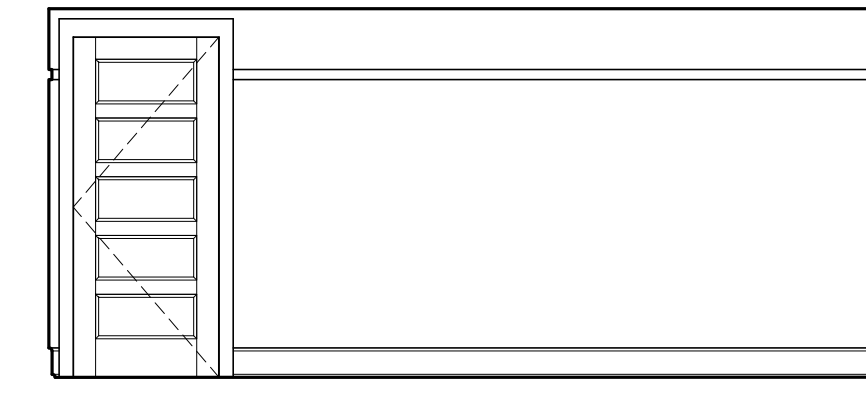
3 INTERIOR ELEVATION UNIT 103A
 1/4"=1'-0"



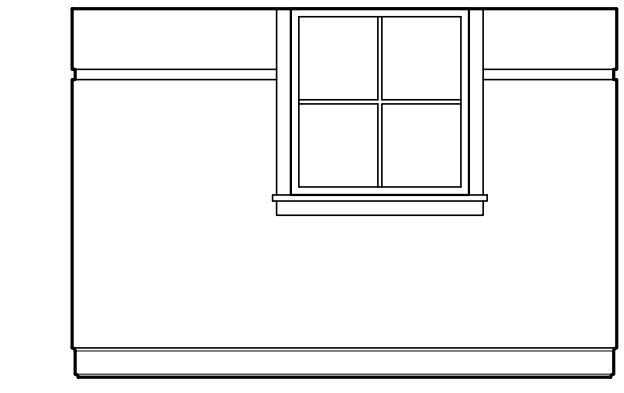
5 INTERIOR ELEVATION UNIT 103A
 1/4"=1'-0"



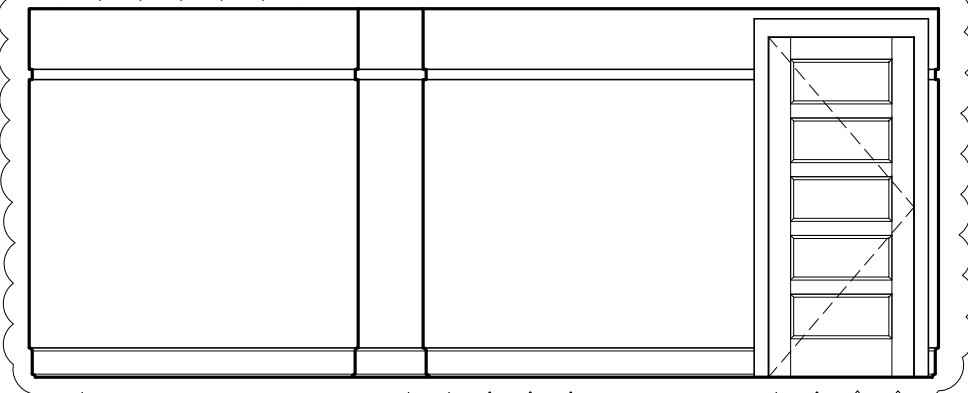
6 INT. ELEV. UNIT 103A
 1/4"=1'-0"



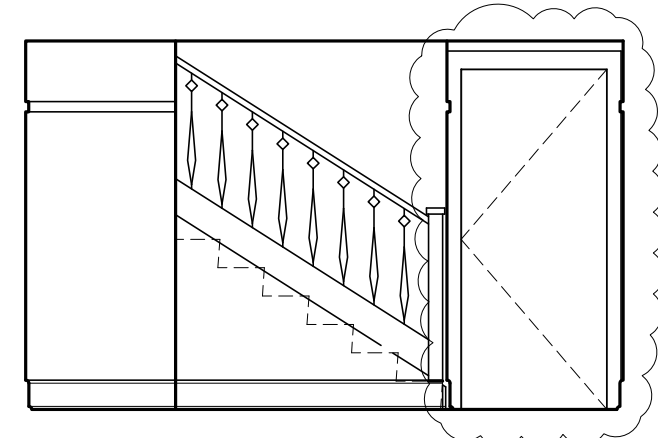
7 INTERIOR ELEVATION UNIT 103A
 1/4"=1'-0"



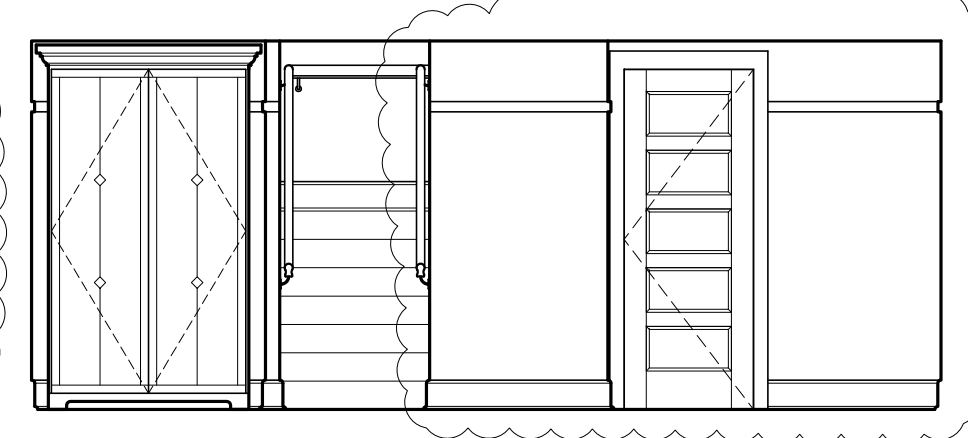
8 INTERIOR ELEVATION UNIT 103A
 1/4"=1'-0"



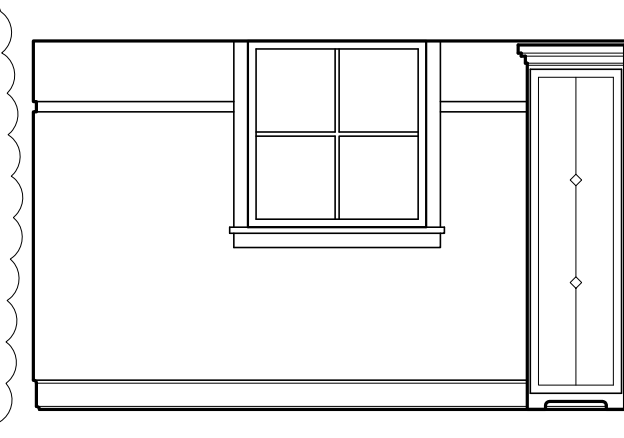
9 INTERIOR ELEVATION UNIT 103A
 1/4"=1'-0"



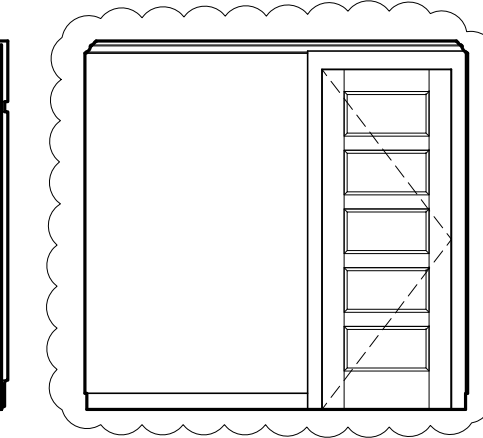
10 INTERIOR ELEVATION UNIT 103A
 1/4"=1'-0"



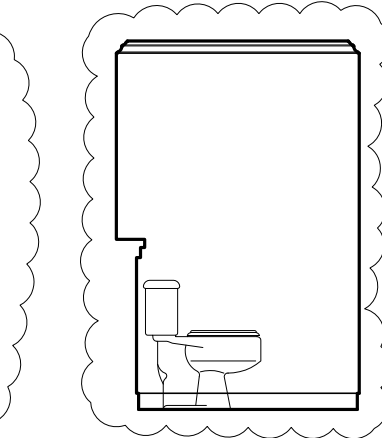
11 INTERIOR ELEVATION UNIT 103A
 1/4"=1'-0"



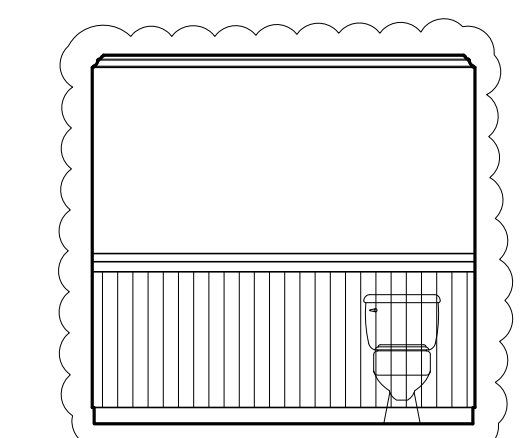
12 INT. ELEV. UNIT 103A
 1/4"=1'-0"



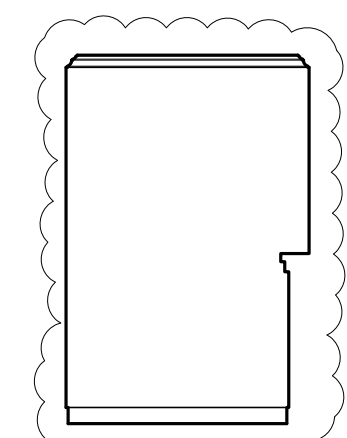
13 INT. ELEV. UNIT 103A
 1/4"=1'-0"



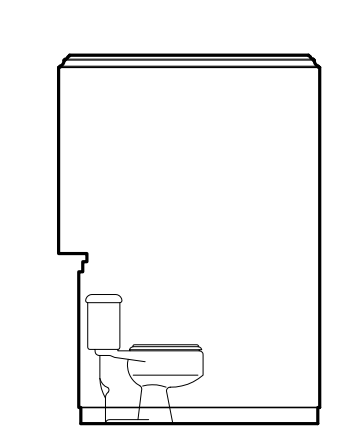
14 INT. ELEV. UNIT 103A
 1/4"=1'-0"



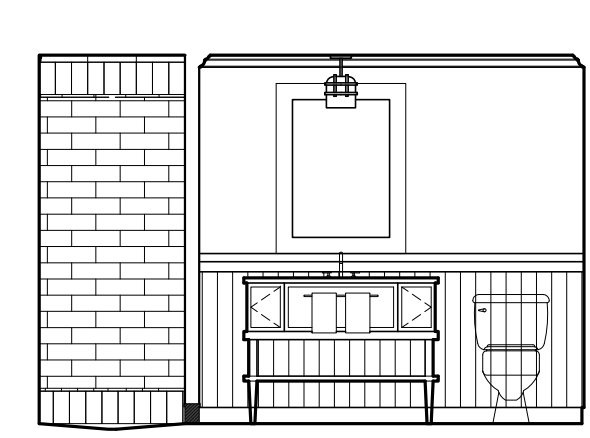
15 INTERIOR ELEVATION UNIT 103A
 1/4"=1'-0"



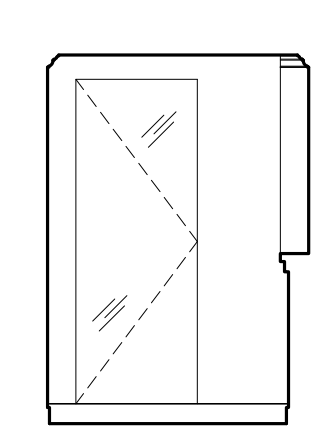
16 INT. ELEV. UNIT 103A
 1/4"=1'-0"



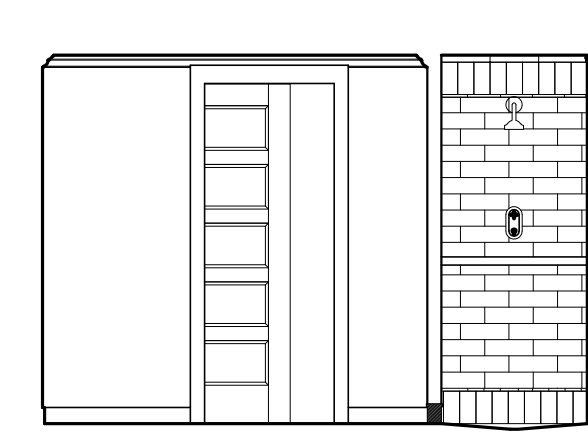
17 INT. ELEV. UNIT 103A
 1/4"=1'-0"



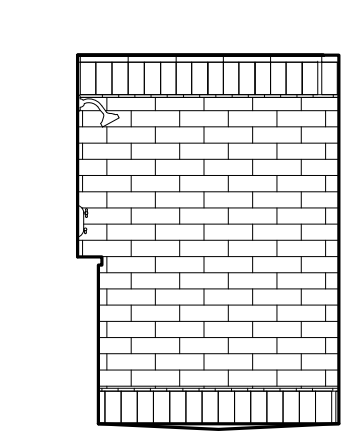
18 INTERIOR ELEVATION UNIT 103A
 1/4"=1'-0"



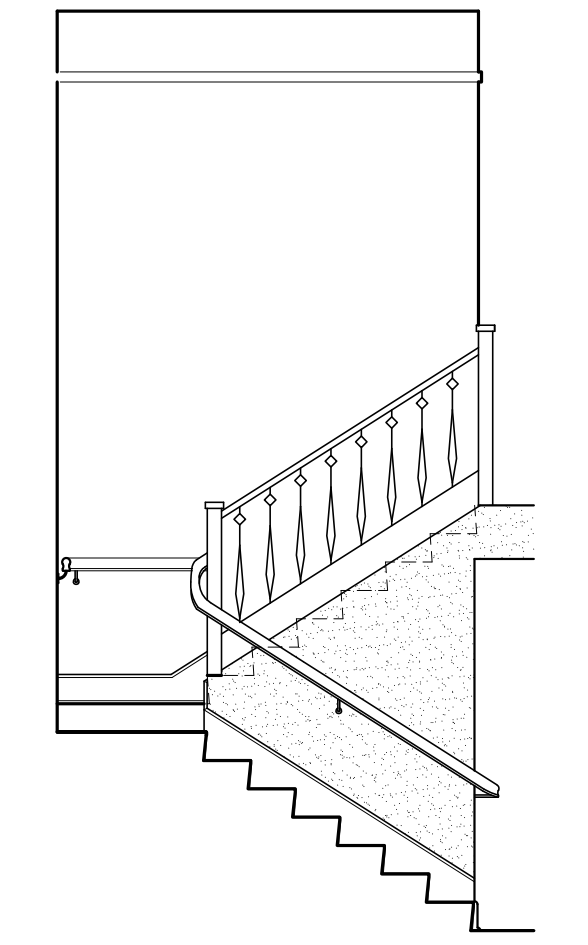
19 INT. ELEV. UNIT 103A
 1/4"=1'-0"



20 INTERIOR ELEVATION UNIT 103A
 1/4"=1'-0"



21 INT. ELEV. UNIT 103A
 1/4"=1'-0"



22 INTERIOR ELEVATION UNIT 103A
 1/4"=1'-0"

Prepared For:
The Inn at Diamond Cove, LLC.
 PO BOX 3572
 PORTLAND, ME 04101

Interior Designer:
truexcollins
 INTERIORS
 208 BATTERY STREET BURLINGTON, VERMONT 05401 USA
 Phone 802-656-2775 Fax 802-227-1076
 ARCHITECTURE INTERIOR DESIGN truxcollins.com

Architect:
ARCHETYPE architects
 48 Union Wharf Portland, Maine 04101
 (207) 772-6022 Fax (207) 772-4056

Project:
THE INN AT DIAMOND COVE, LLC
 McKINLEY COURT
 GREAT DIAMOND ISLAND, MAINE

Revisions:

Date: 04 March 2013
 Scale: As Noted
INTERIOR ELEVATIONS
 UNIT 103A, 110A

A9.06