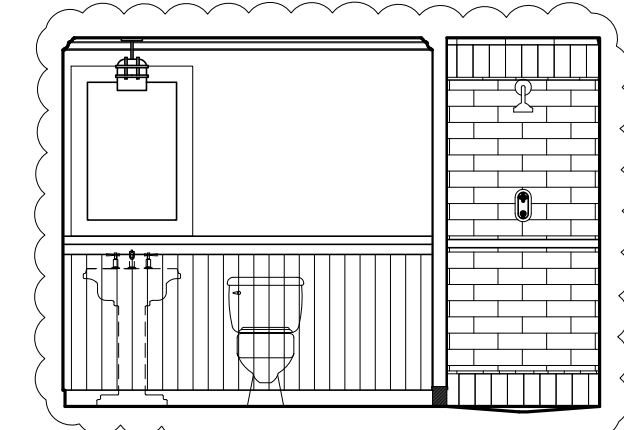


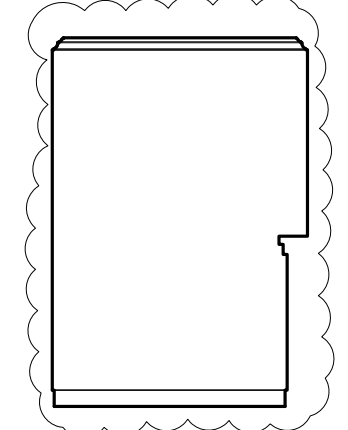
S2-A  
M-2  
C1  
A3  
B1

9 INT. ELEV. UNIT 102A  
1/4"=1'-0"



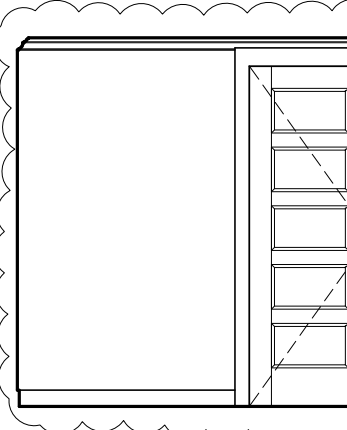
13 INT. ELEV. UNIT 102A  
1/4"=1'-0"

10 INT. ELEV. UNIT 102A  
1/4"=1'-0"



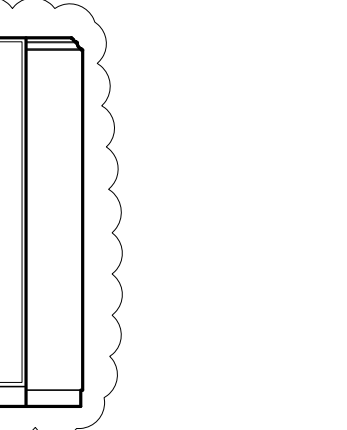
14 INT. ELEV. UNIT 102A  
1/4"=1'-0"

11 INT. ELEV. UNIT 102A  
1/4"=1'-0"

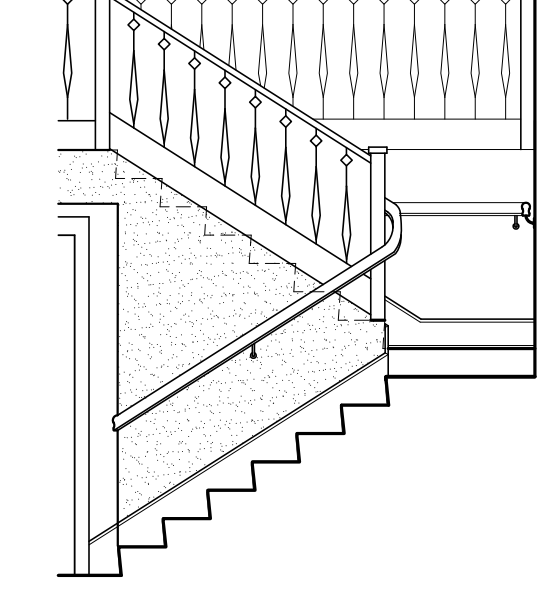


15 INT. ELEV. UNIT 102A  
1/4"=1'-0"

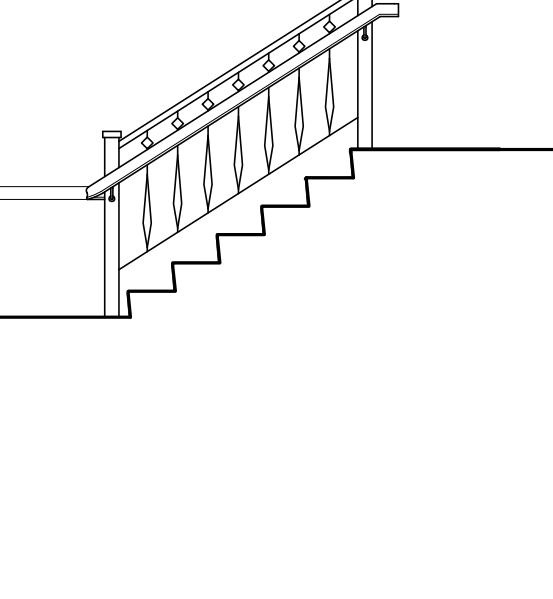
12 INT. ELEV. UNIT 102A  
1/4"=1'-0"



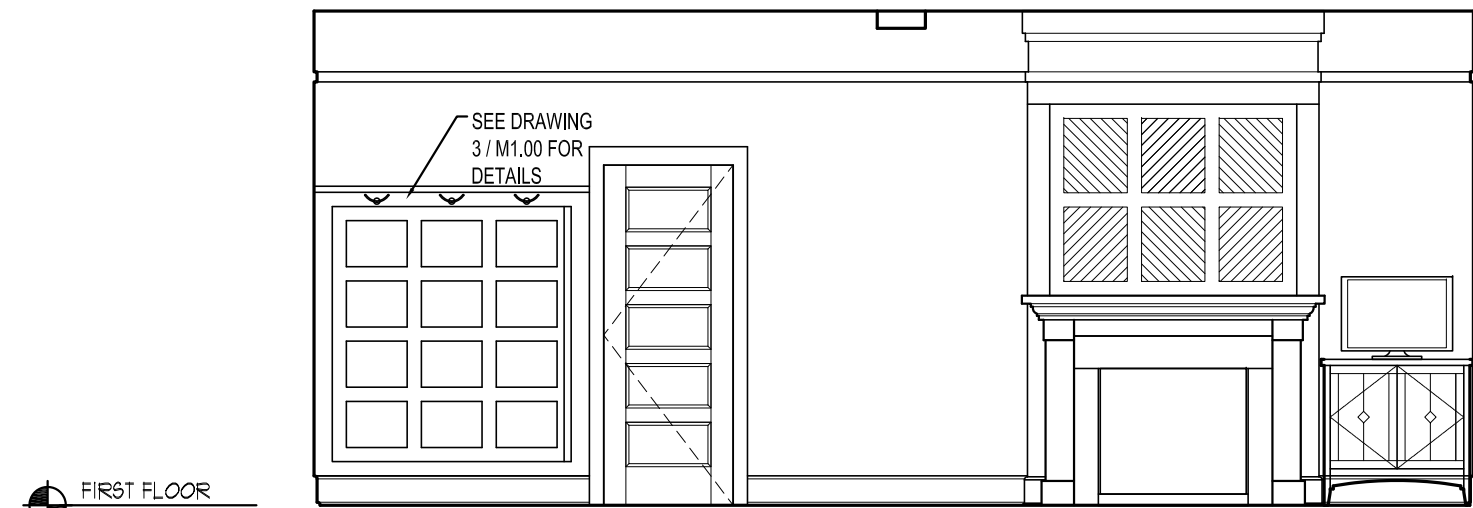
16 INT. ELEV. UNIT 102A  
1/4"=1'-0"



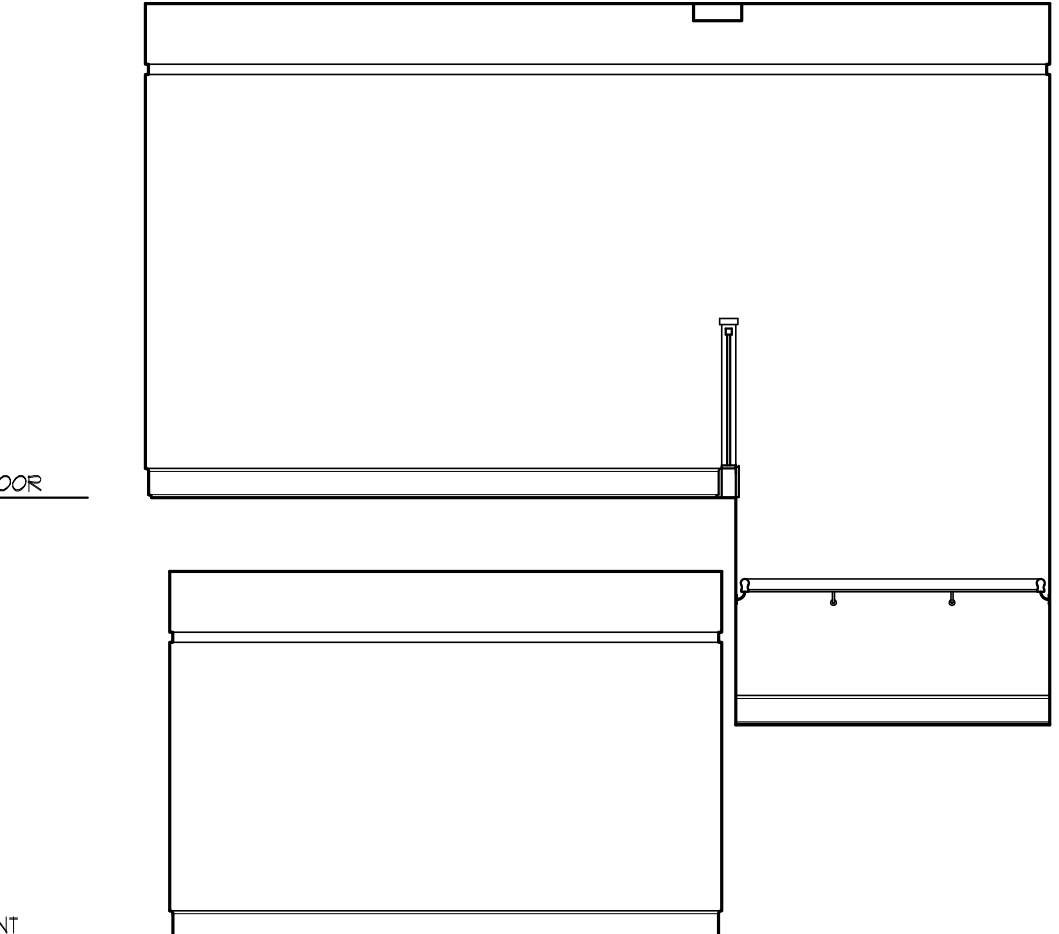
18 INTERIOR ELEVATION UNIT 102A  
1/4"=1'-0"



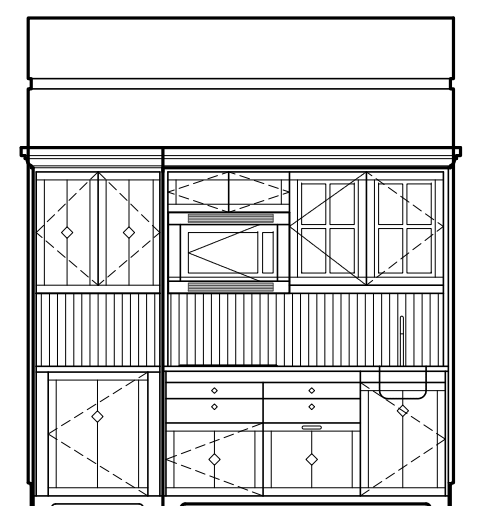
19 INTERIOR ELEVATION UNIT 102A  
1/4"=1'-0"



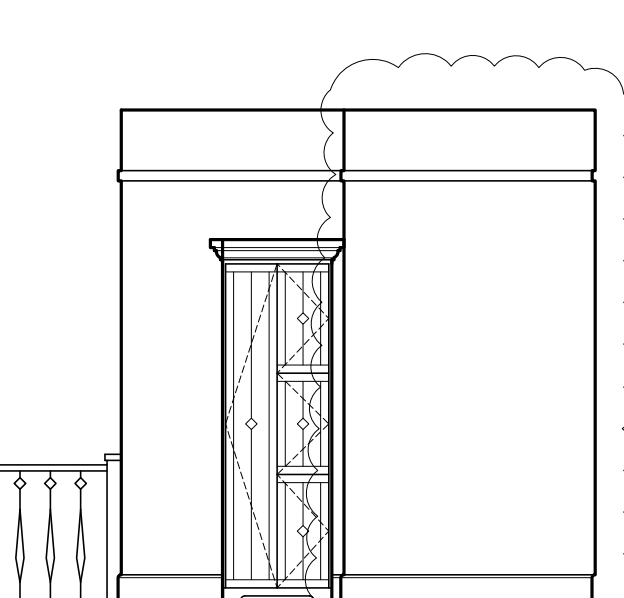
1 INTERIOR ELEVATION UNIT 102A  
1/4"=1'-0"



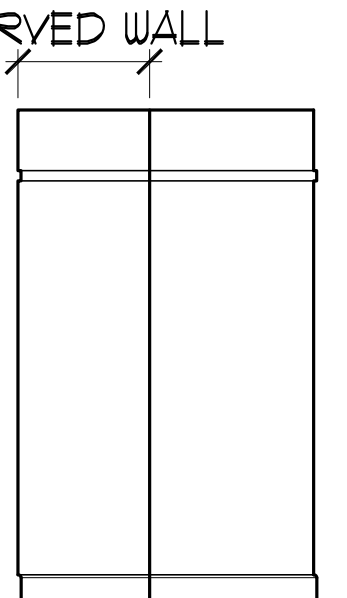
3 INTERIOR ELEVATION UNIT 102A  
1/4"=1'-0"



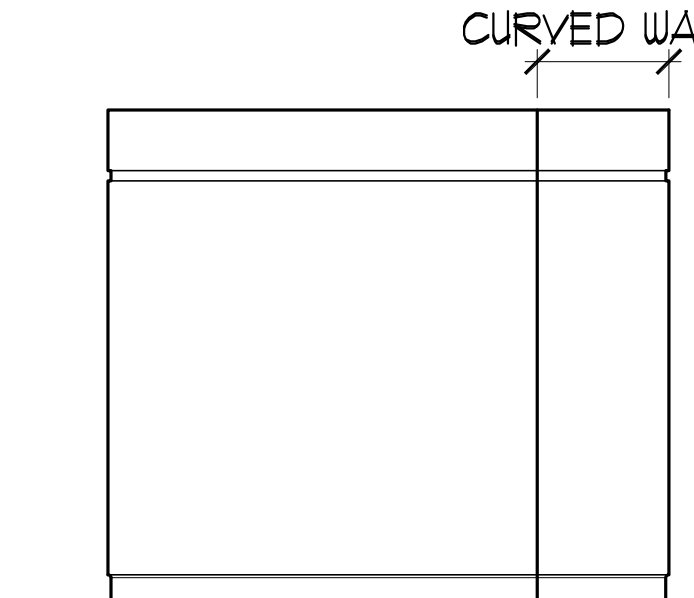
5 INTERIOR ELEVATION UNIT 102A  
1/4"=1'-0"



6 INTERIOR ELEVATION UNIT 102A  
1/4"=1'-0"

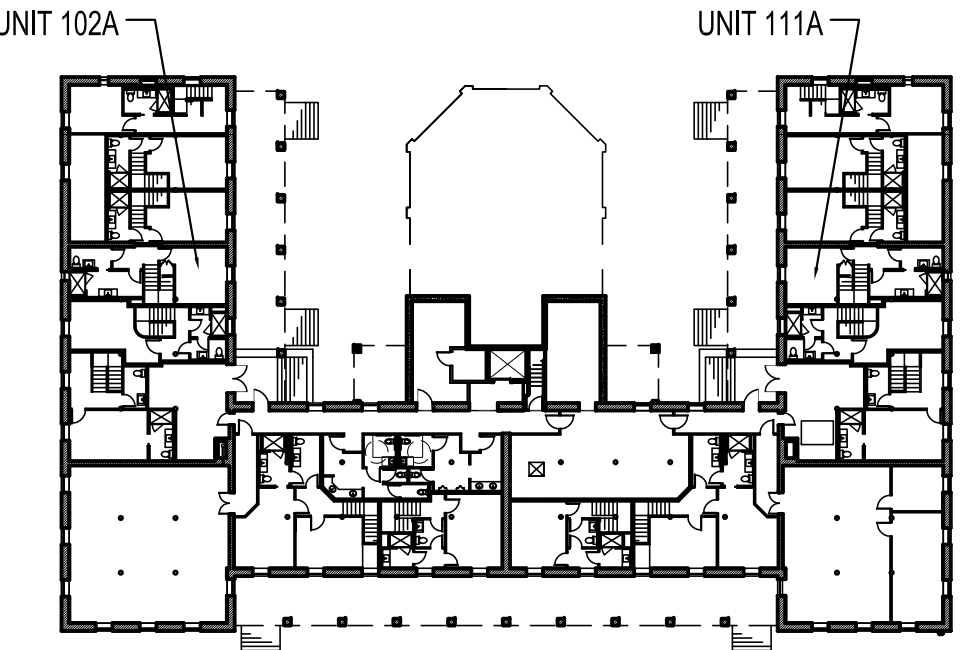


7 INTERIOR ELEVATION UNIT 102A  
1/4"=1'-0"

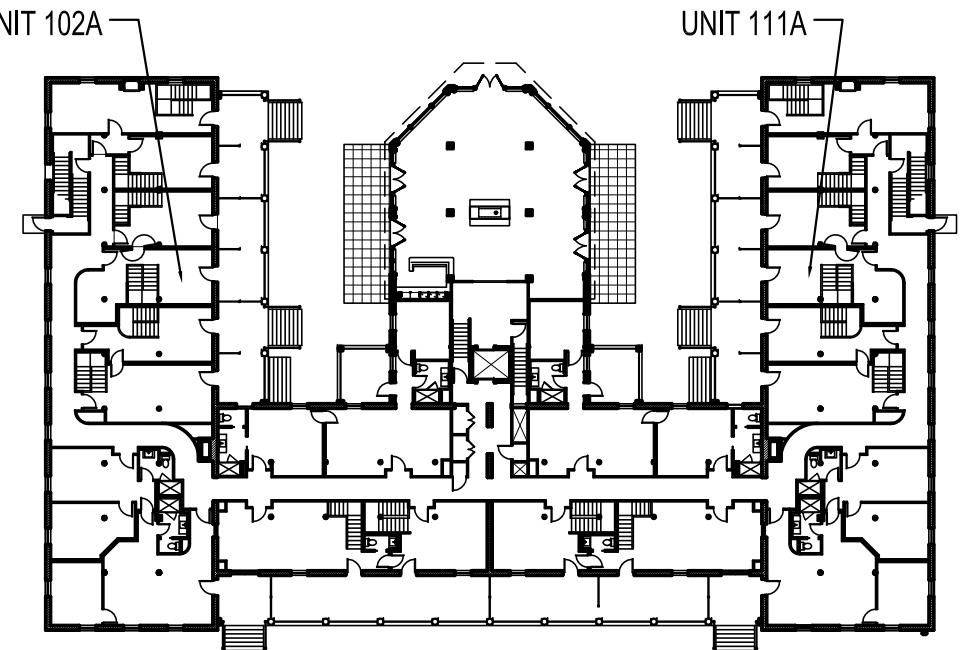


8 INTERIOR ELEVATION UNIT 102A  
1/4"=1'-0"

NOTES:  
-UNIT 102 A SHOWN- 111A IS MIRRORED  
-REFER TO M1.00 FOR MILLWORK DETAILS



BASEMENT KEY PLAN-NTS



FIRST FLOOR KEY PLAN-NTS

Prepared For:  
**The Inn at Diamond Cove, LLC.**  
PO BOX 3572  
PORTLAND, ME 04101

Interior Designer:  
**truexcollins**  
INTERIORS  
208 BATTERY STREET BURLINGTON, VERMONT 05401 USA  
Phone 802-688-2775 Fax 802-247-1076  
ARCHITECTURE INTERIOR DESIGN truxcollins.com

Architect:  
**ARCHETYPE**  
architects  
48 Union Wharf Portland, Maine 04101  
(207) 772-6022 Fax (207) 772-4056

Project:  
**THE INN AT DIAMOND COVE, LLC**  
McKINLEY COURT  
GREAT DIAMOND ISLAND, MAINE

Revisions:

Date: 04 March 2013  
Scale: As Noted  
**INTERIOR ELEVATIONS**  
UNIT 102A, 111A

**A9.04**