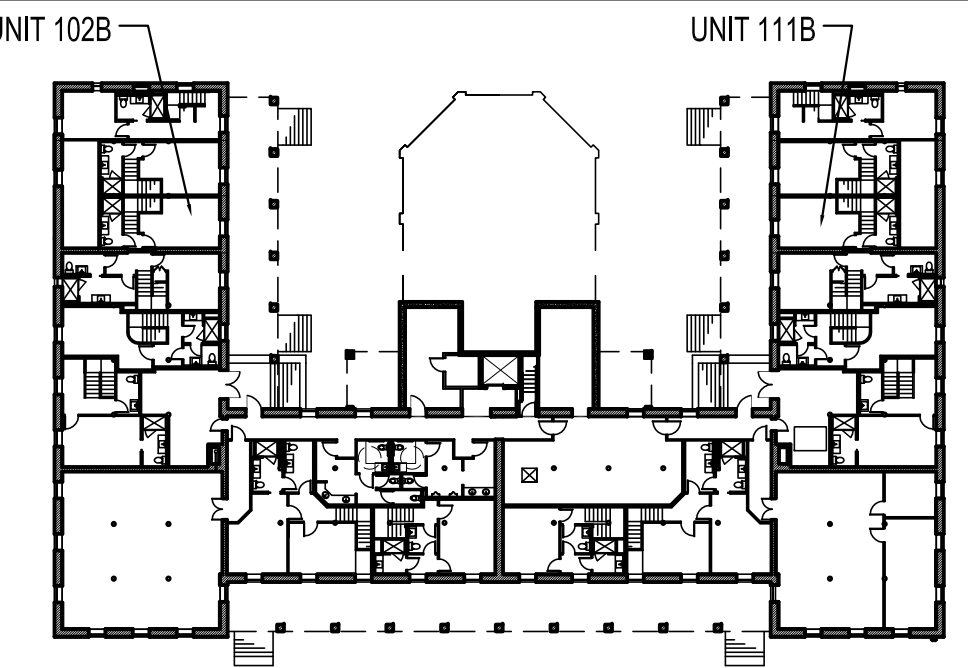
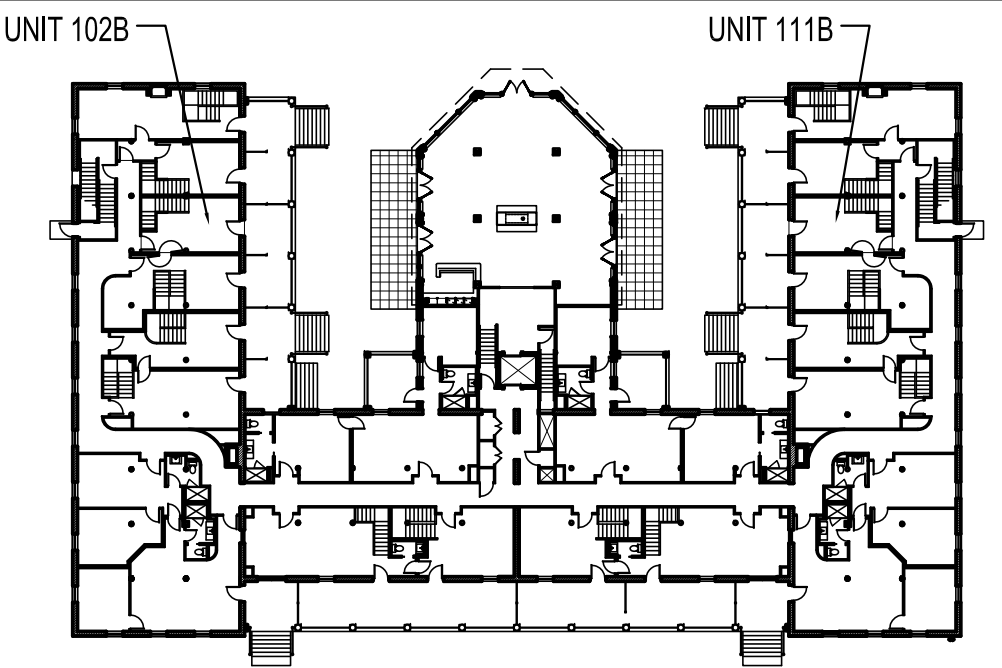


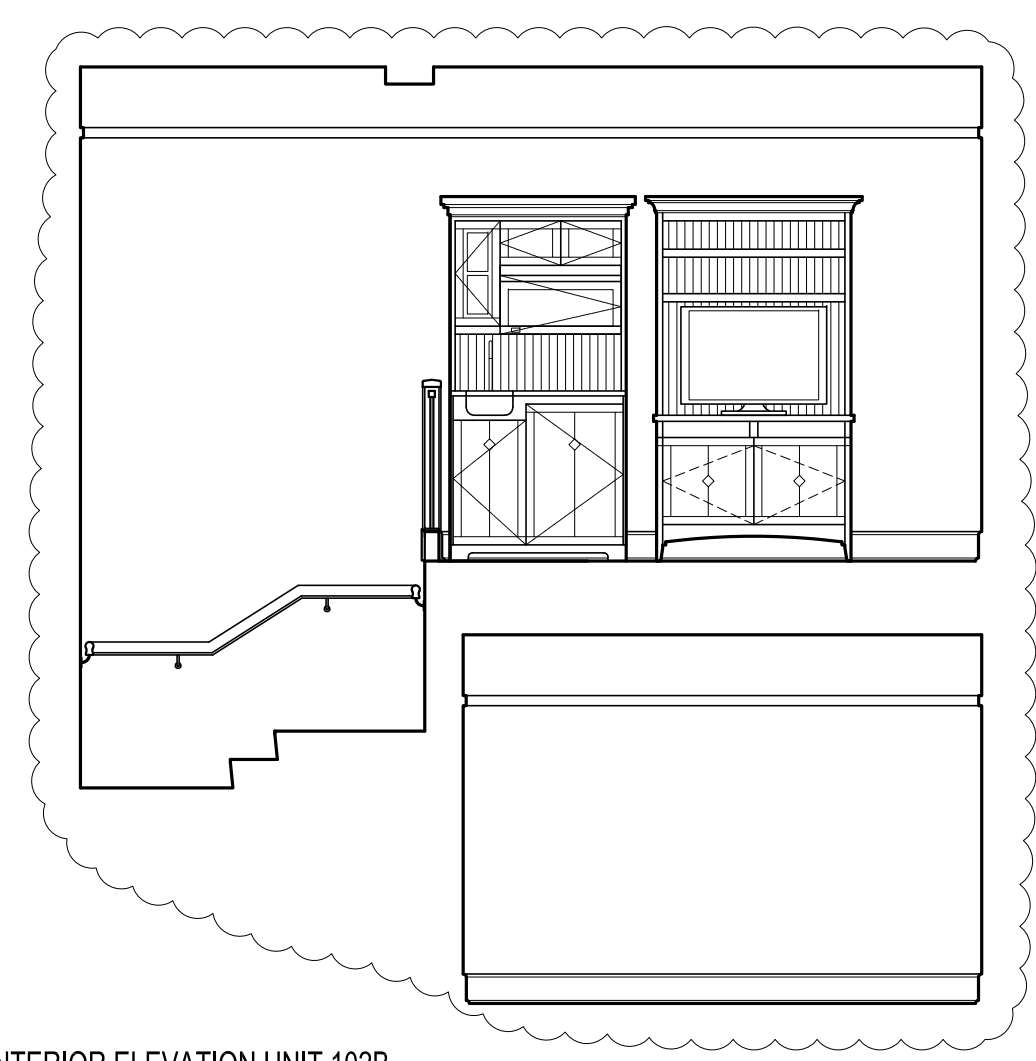
NOTES:  
 -UNIT 102 B SHOWN- 111B IS MIRRORED  
 -REFER TO M1.00 FOR MILLWORK DETAILS



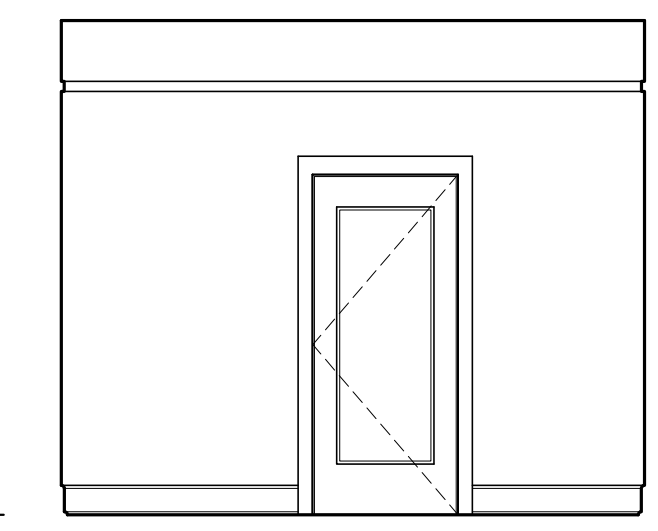
BASEMENT KEY PLAN-NTS



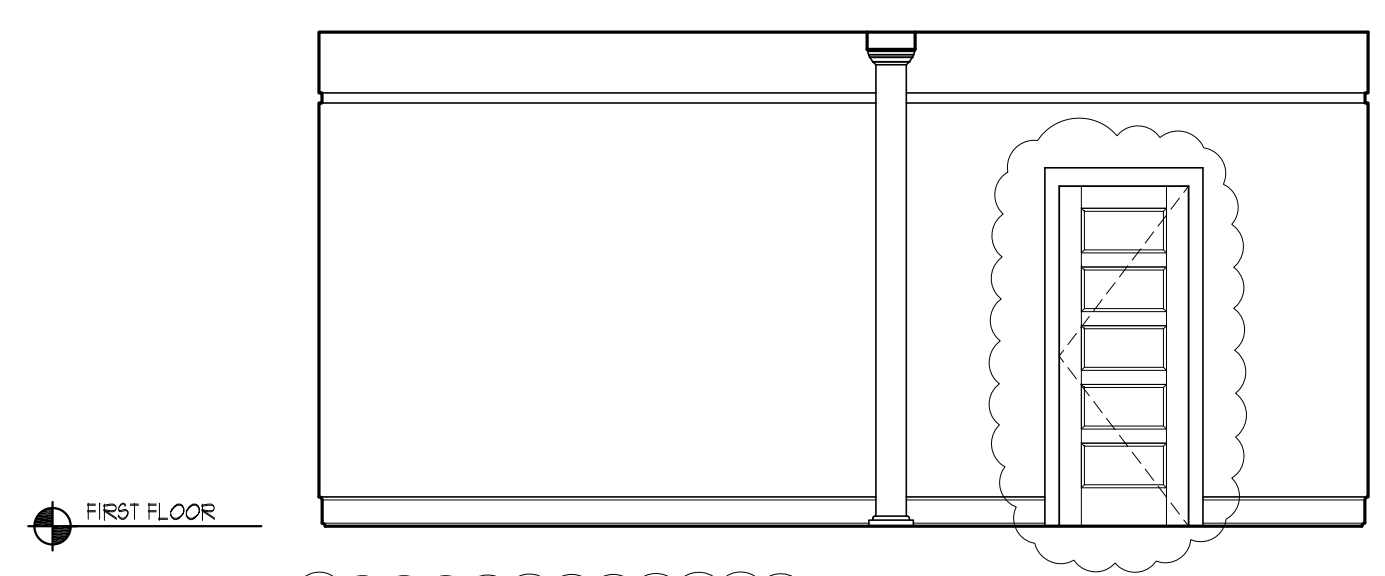
FIRST FLOOR KEY PLAN-NTS



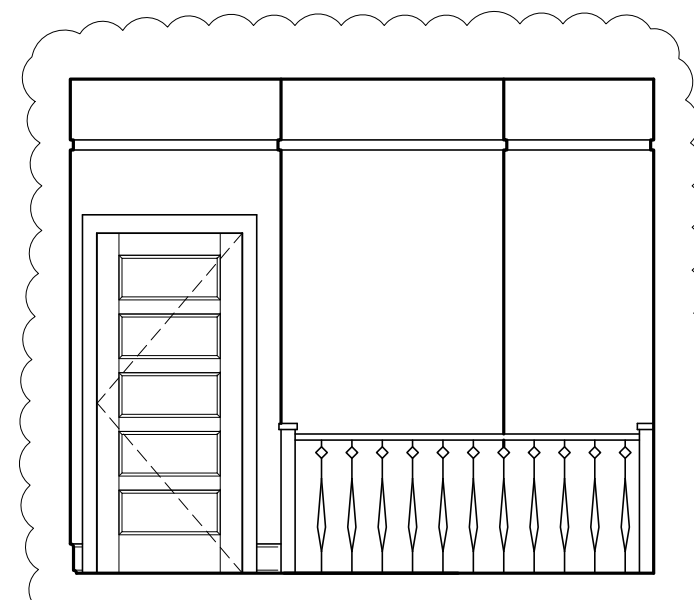
1 INTERIOR ELEVATION UNIT 102B  
 1/4"=1'-0"



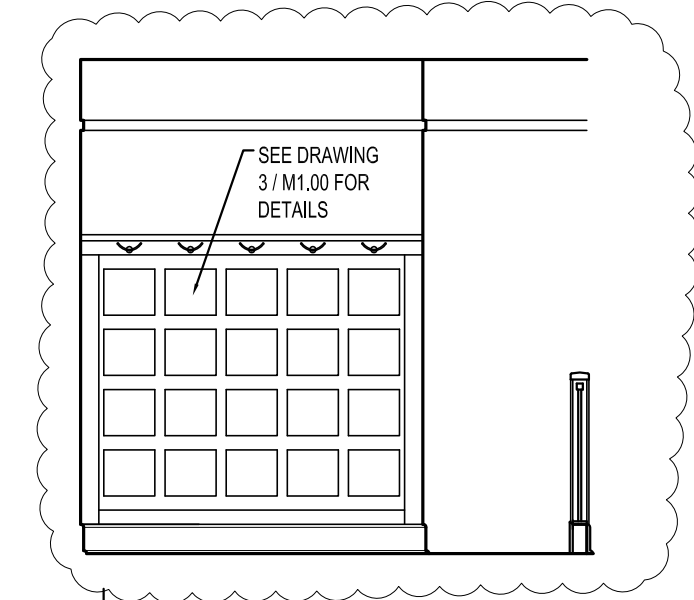
2 INTERIOR ELEVATION UNIT 102B  
 1/4"=1'-0"



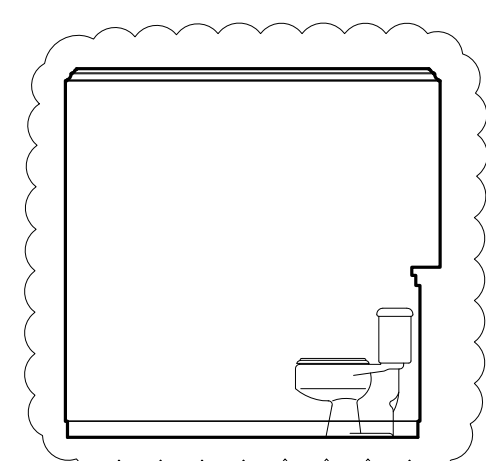
3 INTERIOR ELEVATION UNIT 102B  
 1/4"=1'-0"



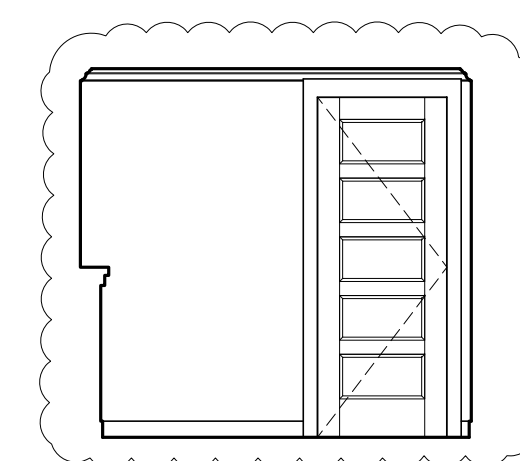
4 INTERIOR ELEVATION UNIT 102B  
 1/4"=1'-0"



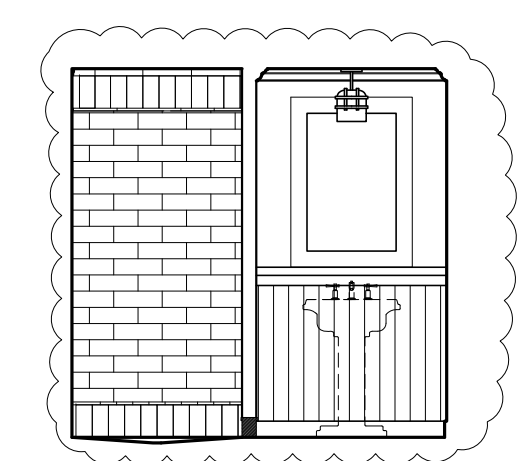
5 INTERIOR ELEVATION UNIT 102B  
 1/4"=1'-0"



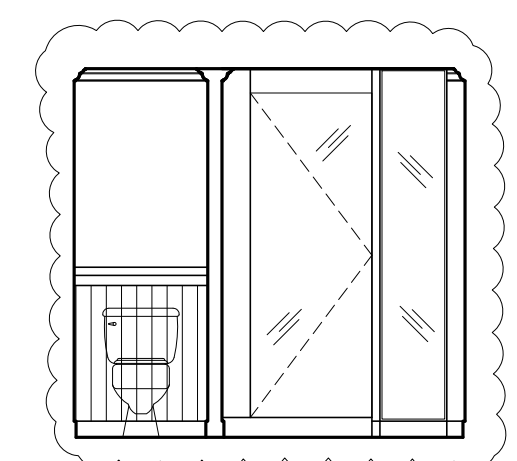
6 INTERIOR ELEVATION UNIT 102B  
 1/4"=1'-0"



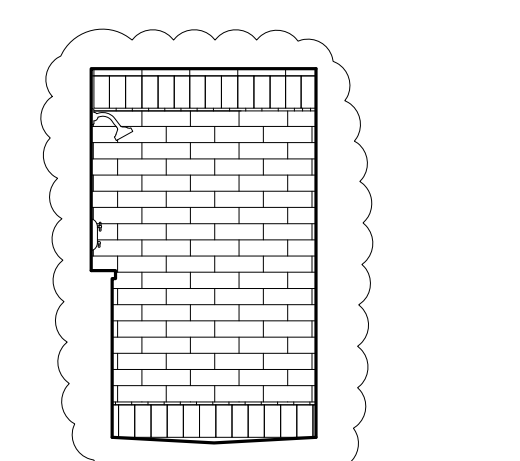
7 INTERIOR ELEVATION UNIT 102B  
 1/4"=1'-0"



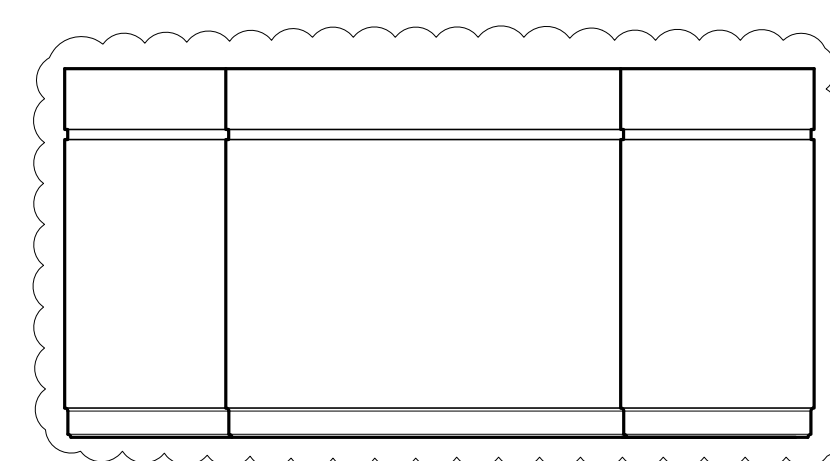
8 INTERIOR ELEVATION UNIT 102B  
 1/4"=1'-0"



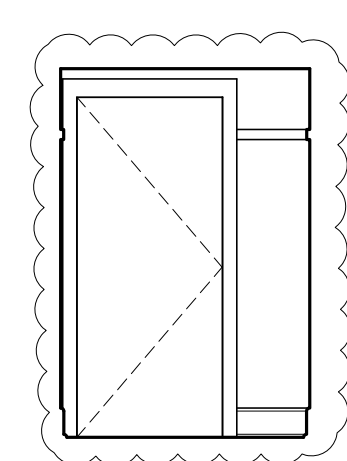
9 INTERIOR ELEVATION UNIT 102B  
 1/4"=1'-0"



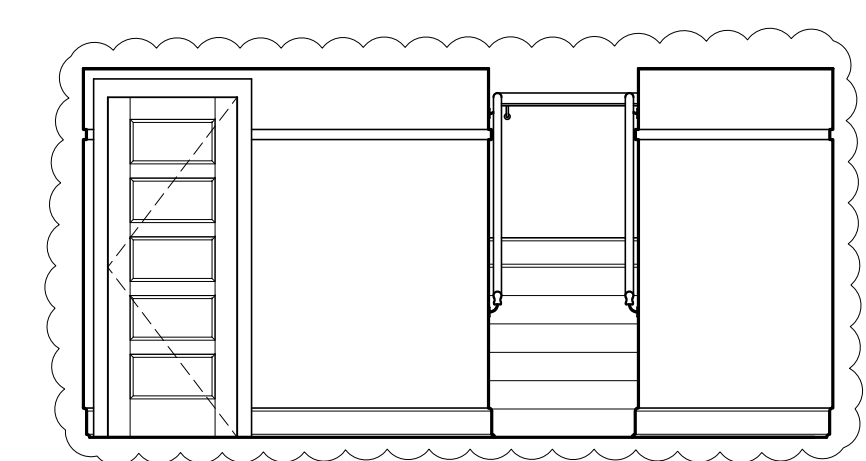
10 INTERIOR ELEVATION UNIT 102B  
 1/4"=1'-0"



11 INTERIOR ELEVATION UNIT 101B  
 1/4"=1'-0"



12 INTERIOR ELEVATION UNIT 101B  
 1/4"=1'-0"



13 INTERIOR ELEVATION UNIT 101B  
 1/4"=1'-0"

Prepared For:  
**The Inn at Diamond Cove, LLC.**  
 PO BOX 3572  
 PORTLAND, ME 04101

Interior Designer:  
**truexcollins**  
 INTERIORS  
 208 BATTERY STREET BURLINGTON, VERMONT 05401 USA  
 Phone 802-688-2775 Fax 802-227-1076  
 ARCHITECTURE | INTERIOR DESIGN | truxcollins.com

Architect:  
**ARCHETYPE architects**  
 48 Union Wharf Portland, Maine 04101  
 (207) 772-6022 Fax (207) 772-4056

Project:  
**THE INN AT DIAMOND COVE, LLC**  
 McKINLEY COURT  
 GREAT DIAMOND ISLAND, MAINE

Revisions:

Date: 04 March 2013  
 Scale: As Noted

**INTERIOR ELEVATIONS**  
**UNIT 102B, 111B**