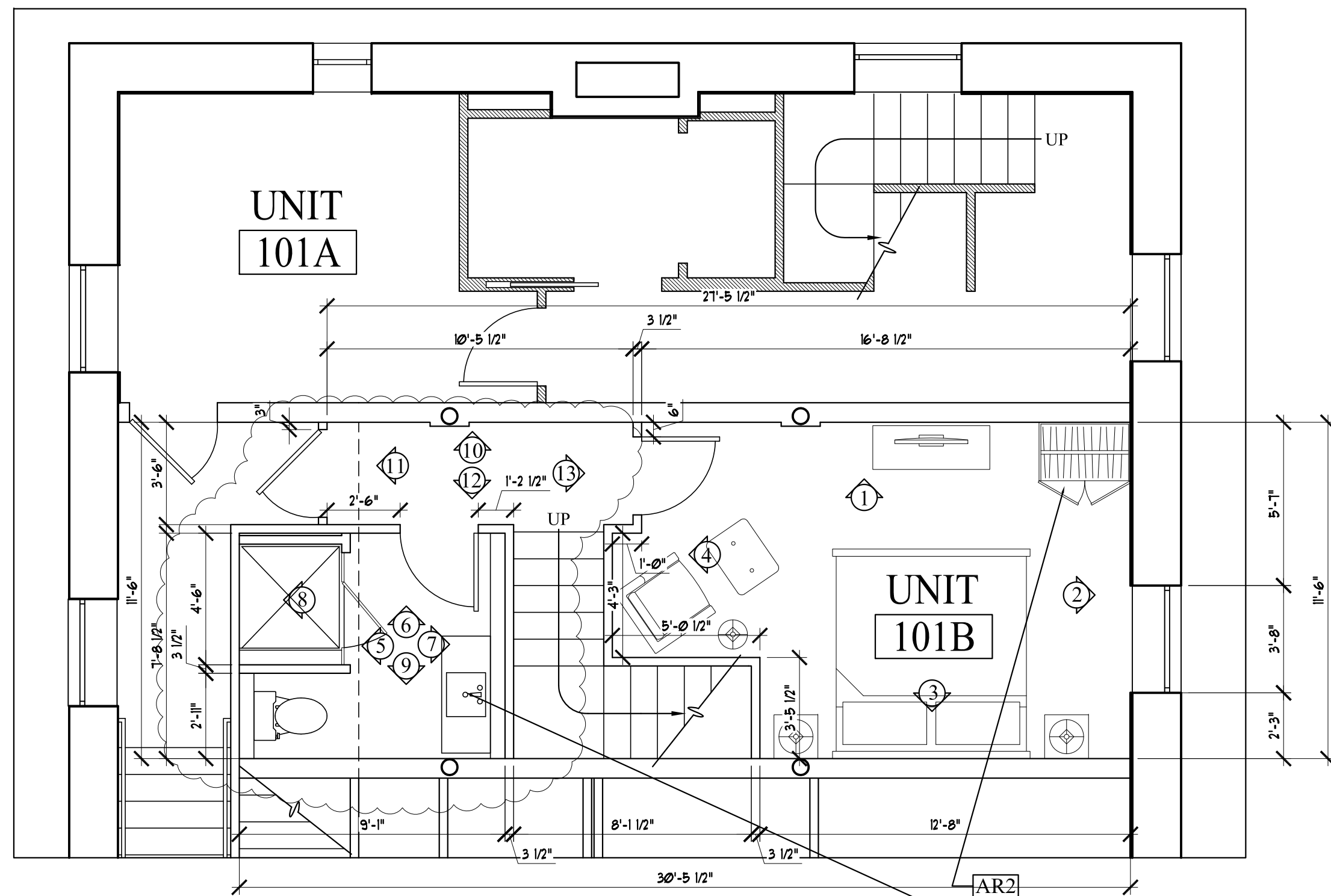
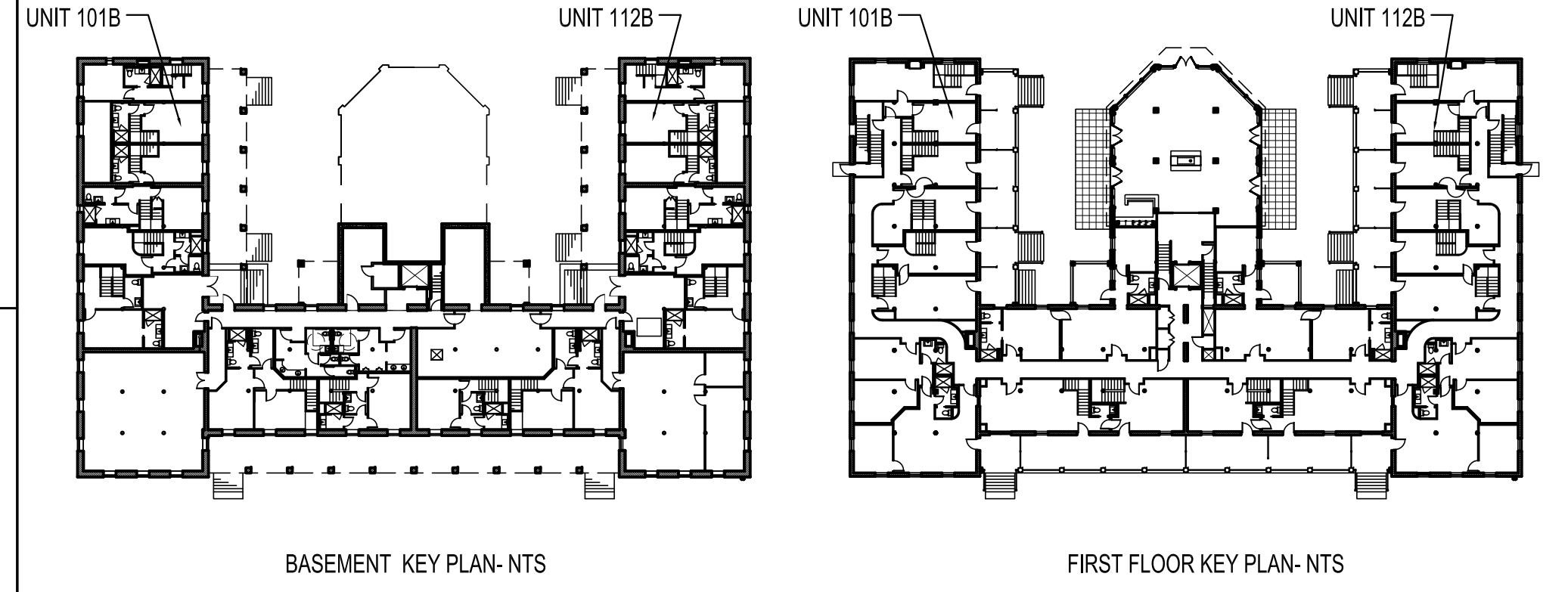


A ENLARGED FLOOR PLAN UNIT 101B FIRST FLOOR
1/4"=1'-0"



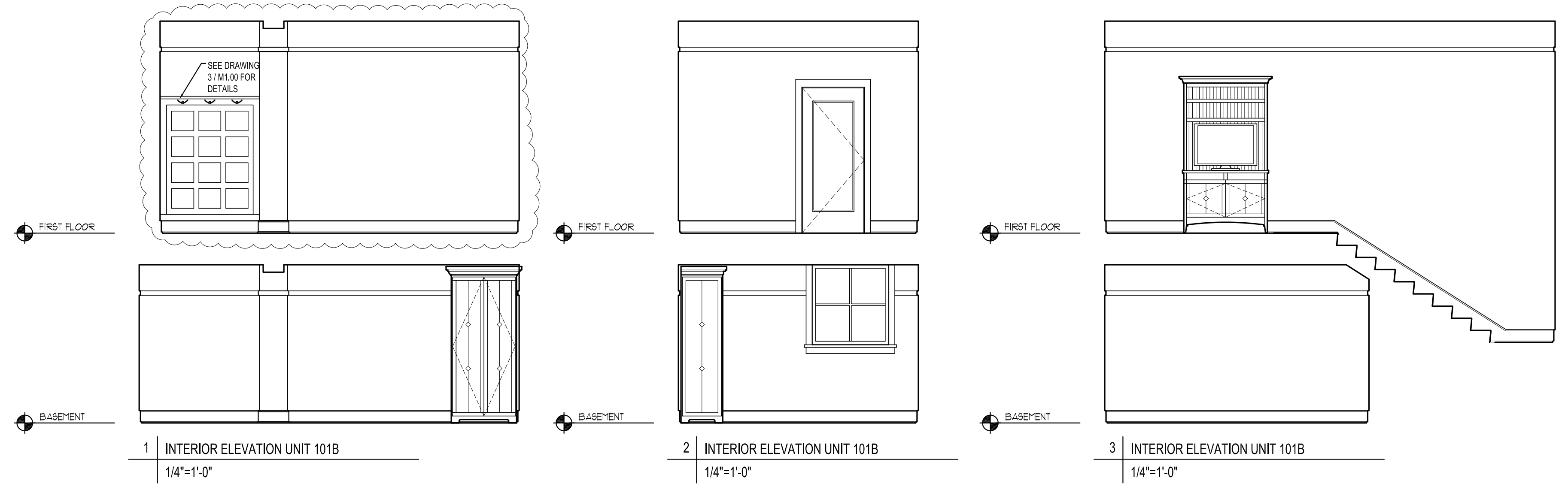
A ENLARGED FLOOR PLAN UNIT 101B BASEMENT
1/4"=1'-0"

NOTES:
-UNIT 101 B SHOWN- 112B IS MIRRORED
-REFER TO M1.00 FOR MILLWORK DETAILS



BASEMENT KEY PLAN-NTS

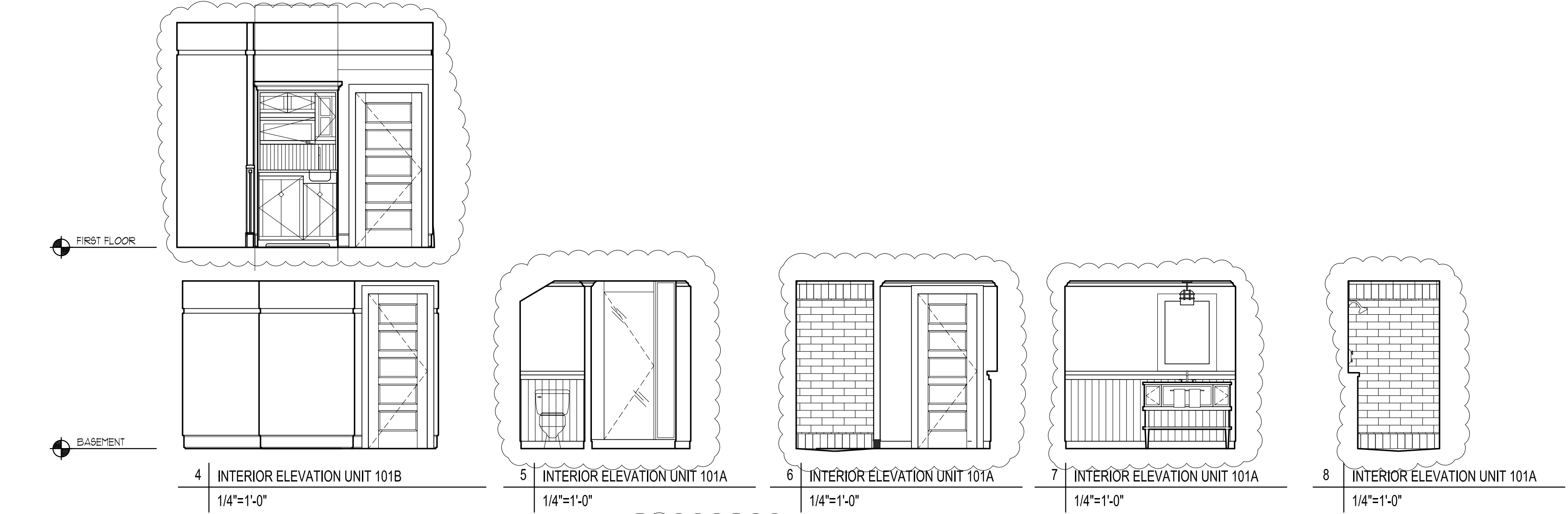
FIRST FLOOR KEY PLAN-NTS



1 INTERIOR ELEVATION UNIT 101B
1/4"=1'-0"

2 INTERIOR ELEVATION UNIT 101B
1/4"=1'-0"

3 INTERIOR ELEVATION UNIT 101B
1/4"=1'-0"



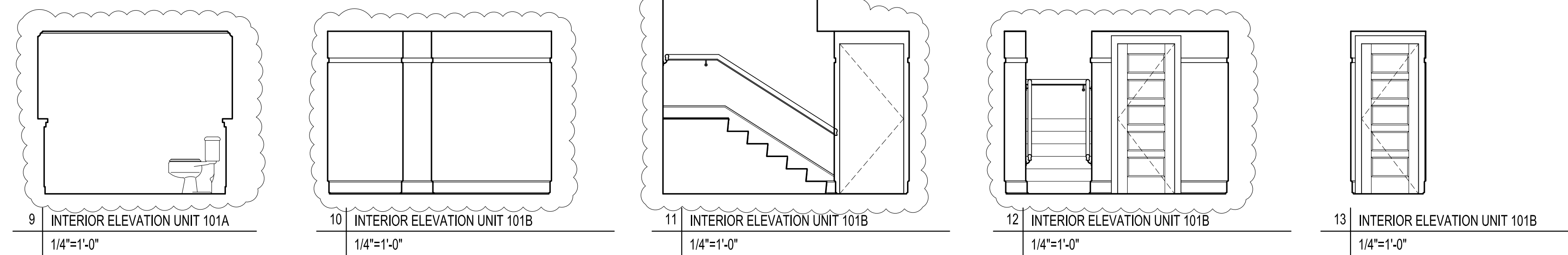
4 INTERIOR ELEVATION UNIT 101B
1/4"=1'-0"

5 INTERIOR ELEVATION UNIT 101A
1/4"=1'-0"

6 INTERIOR ELEVATION UNIT 101A
1/4"=1'-0"

7 INTERIOR ELEVATION UNIT 101A
1/4"=1'-0"

8 INTERIOR ELEVATION UNIT 101A
1/4"=1'-0"



9 INTERIOR ELEVATION UNIT 101A
1/4"=1'-0"

10 INTERIOR ELEVATION UNIT 101B
1/4"=1'-0"

11 INTERIOR ELEVATION UNIT 101B
1/4"=1'-0"

12 INTERIOR ELEVATION UNIT 101B
1/4"=1'-0"

13 INTERIOR ELEVATION UNIT 101B
1/4"=1'-0"

Prepared For:
The Inn at Diamond Cove, LLC.
PO BOX 3572
PORTLAND, ME 04101

Interior Designer:
truexcollins
INTERIORS
208 BATTERY STREET BURLINGTON, VERMONT 05401 USA
Phone 802-688-2775 Fax 802-247-1076
ARCHITECTURE INTERIOR DESIGN@TRUXCOLLINS.COM

Architect:
ARCHETYPE
architects
48 Union Wharf Portland, Maine 04101
(207) 772-6022 Fax (207) 772-4056

Project:
THE INN AT DIAMOND COVE, LLC
McKINLEY COURT
GREAT DIAMOND ISLAND, MAINE

Revisions:

Date: 04 March 2013
Scale: As Noted
INTERIOR ELEVATIONS
UNIT 101B, 112B

A9.02