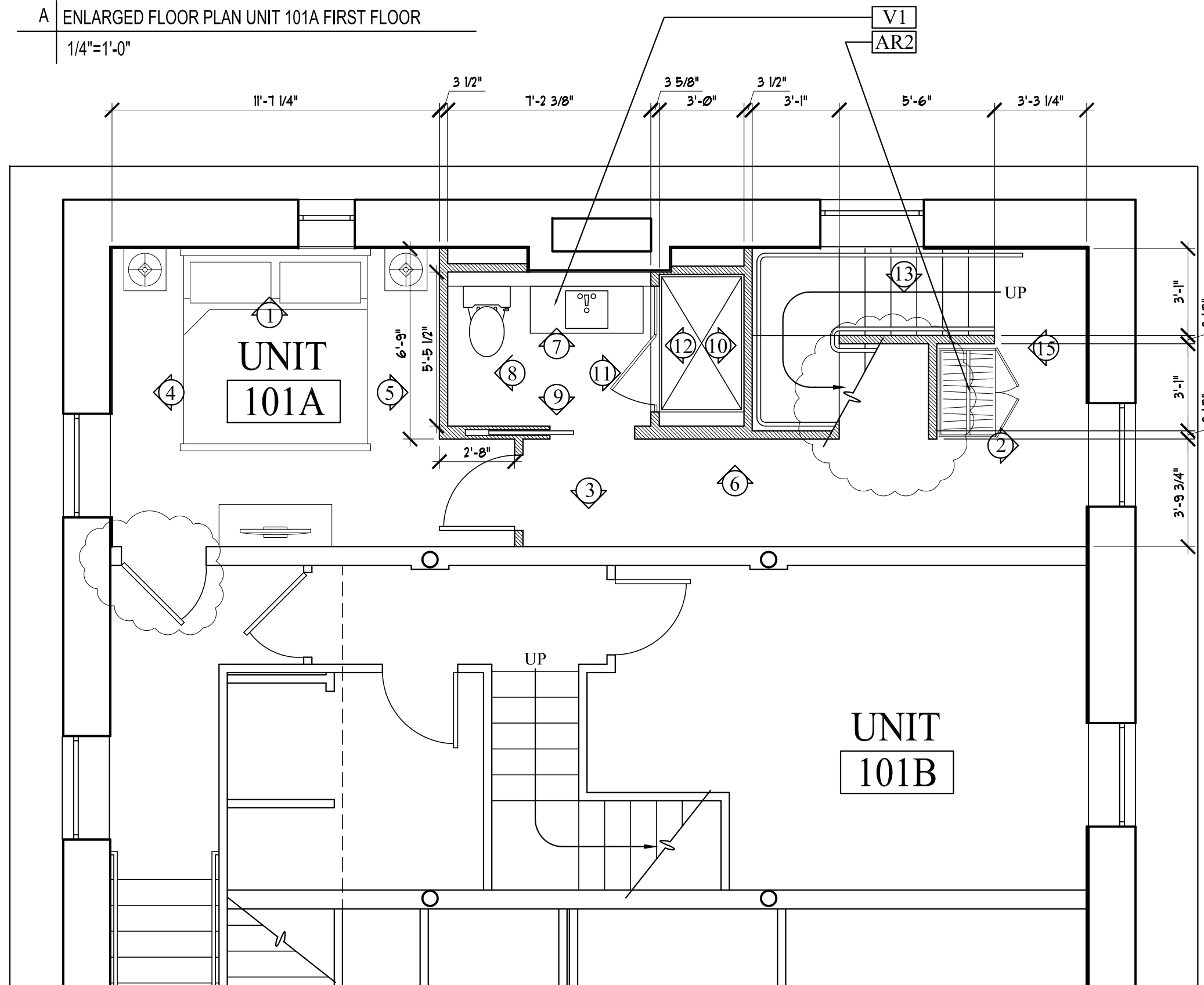
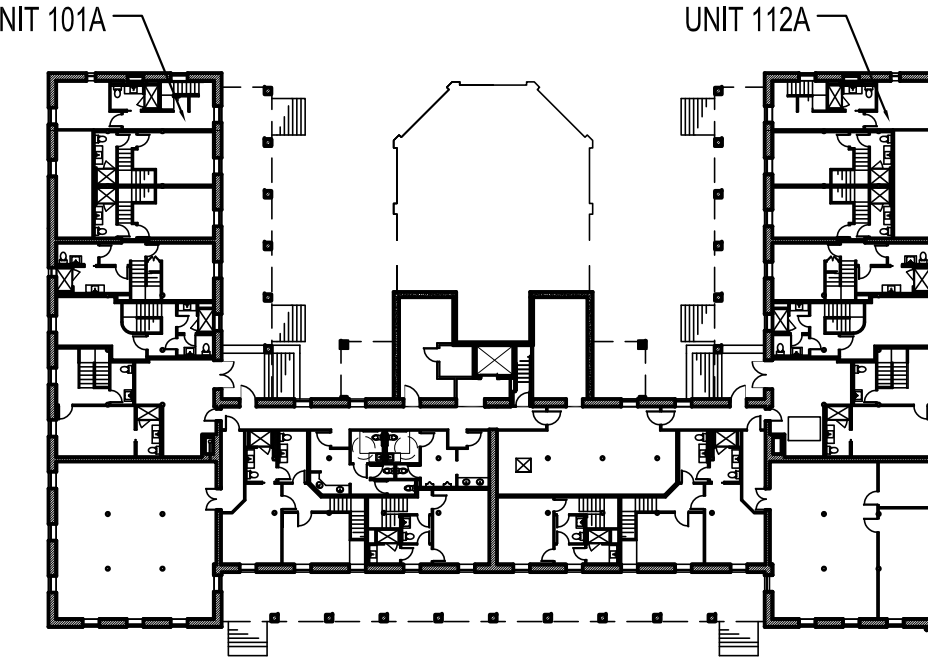


A ENLARGED FLOOR PLAN UNIT 101A FIRST FLOOR  
1/4"=1'-0"

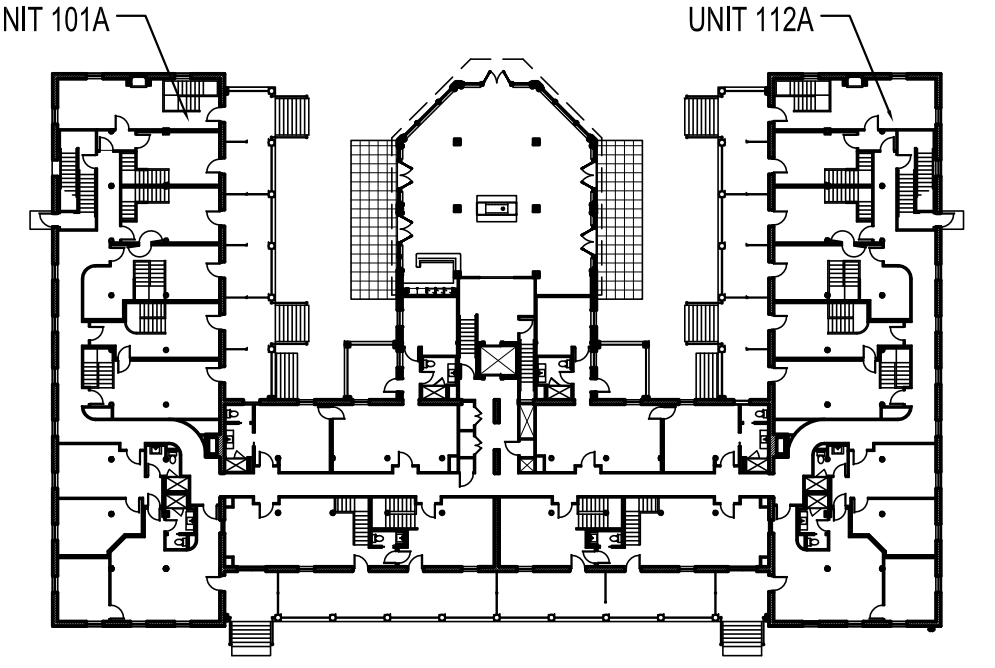


B ENLARGED FLOOR PLAN UNIT 101A BASEMENT  
1/4"=1'-0"

NOTES:  
-UNIT 101 A SHOWN- 112A IS MIRRORED  
-REFER TO M1.00 FOR MILLWORK DETAILS



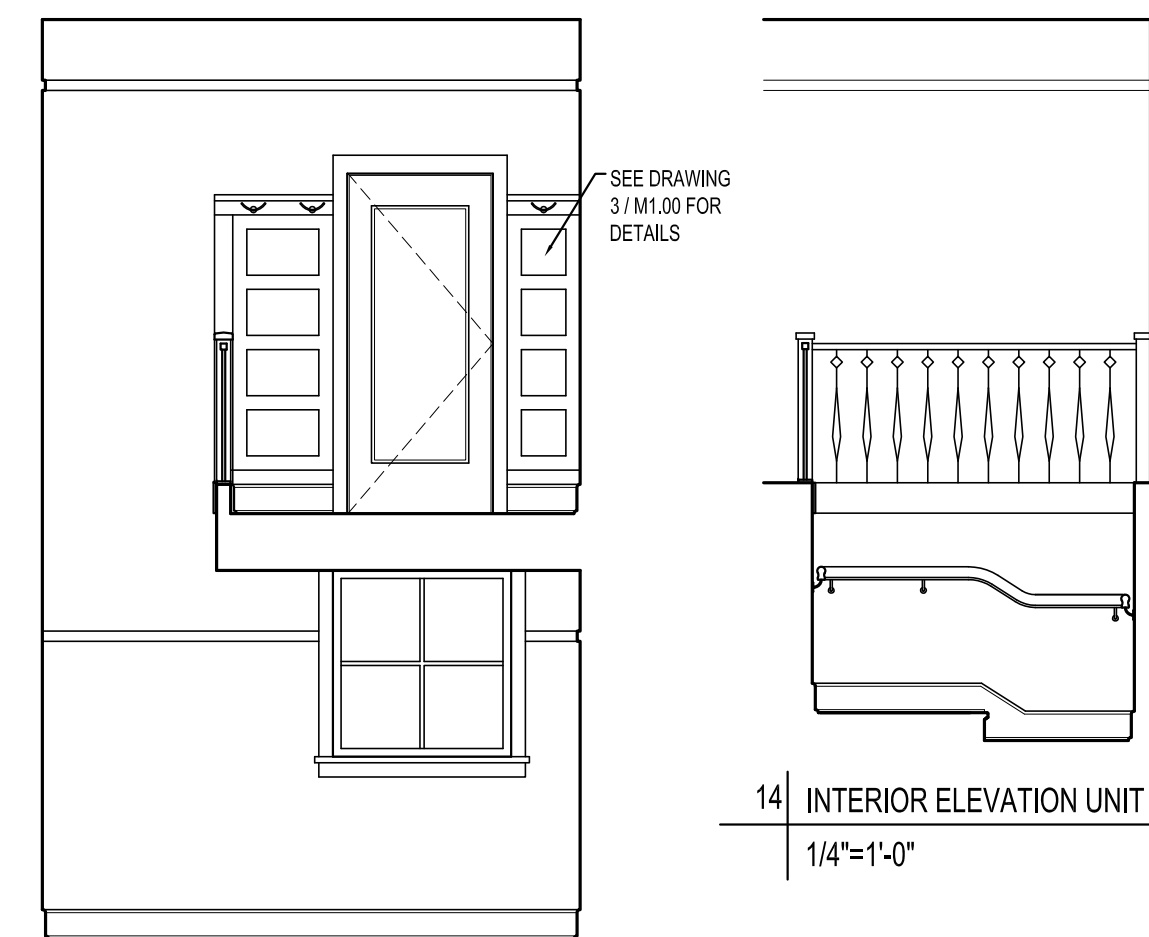
BASEMENT KEY PLAN-NTS



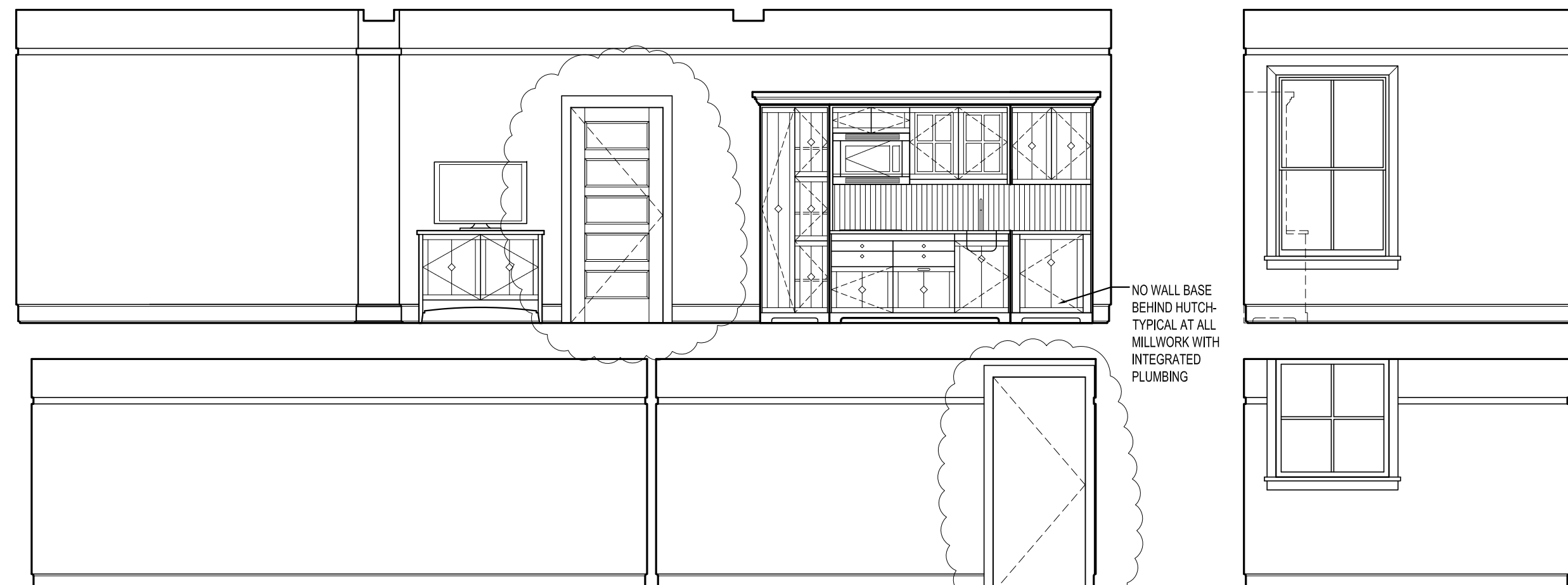
FIRST FLOOR KEY PLAN-NTS



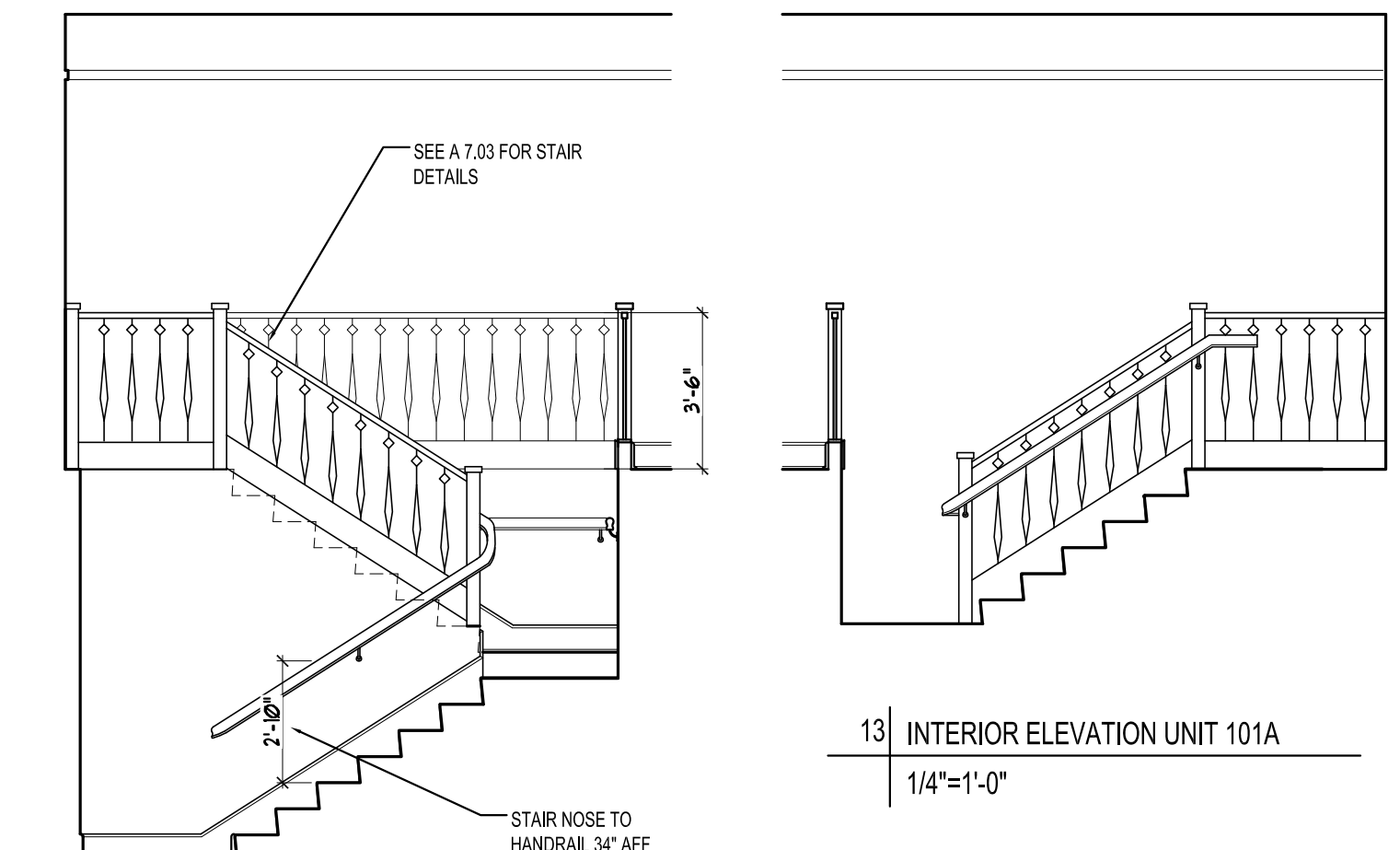
1 INTERIOR ELEVATION UNIT 101A  
1/4"=1'-0"



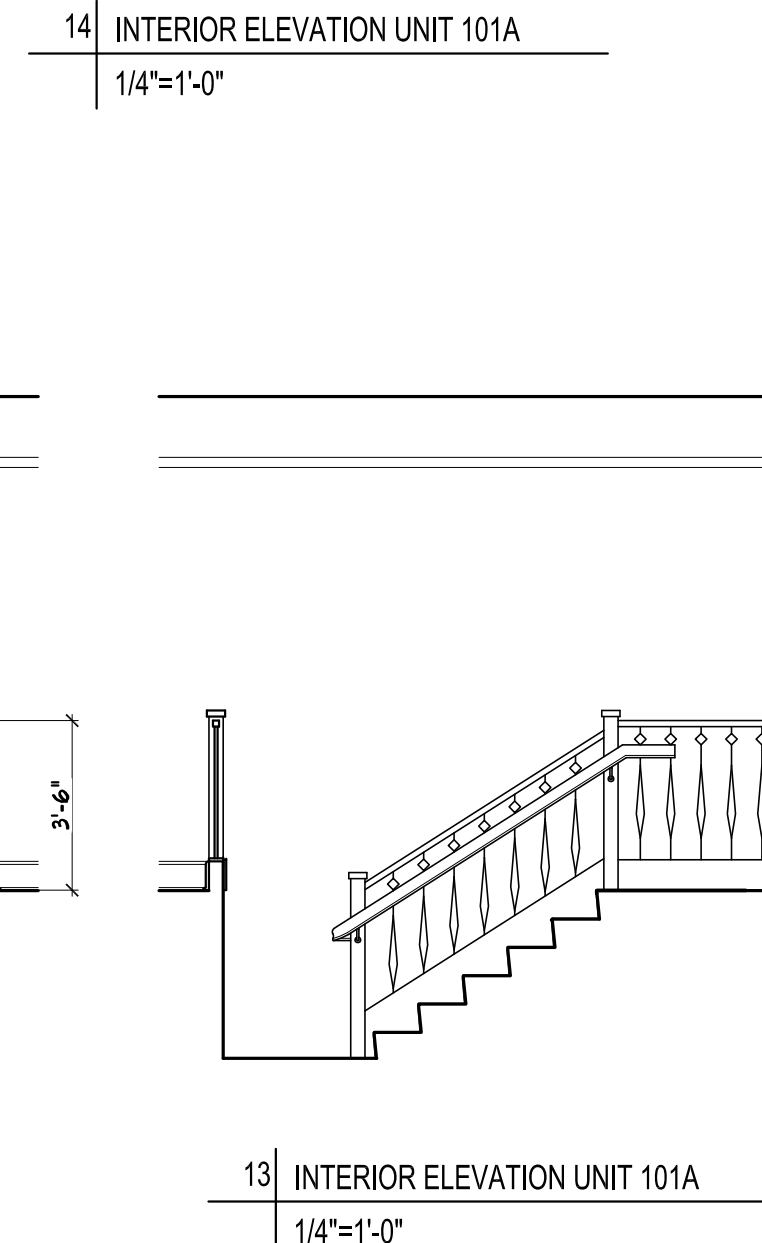
2 INTERIOR ELEVATION UNIT 101A  
1/4"=1'-0"



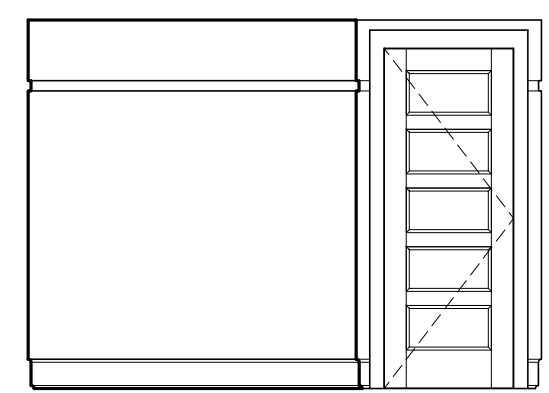
3 INTERIOR ELEVATION UNIT 101A  
1/4"=1'-0"



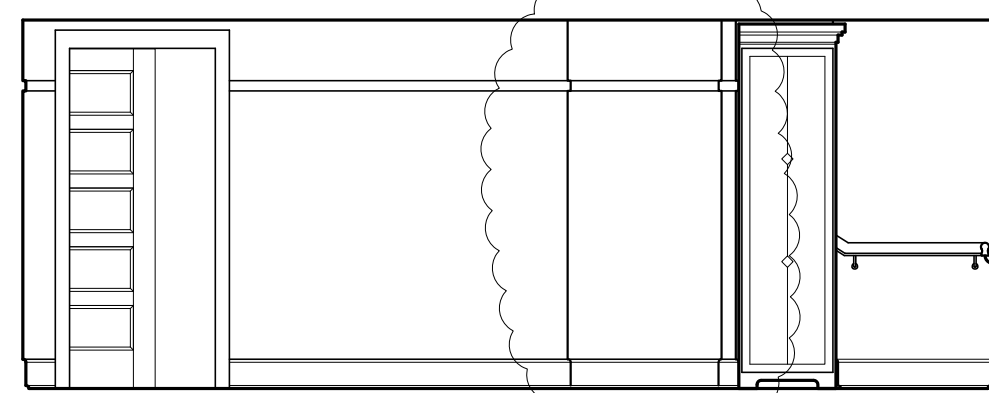
12 INTERIOR ELEVATION UNIT 101A  
1/4"=1'-0"



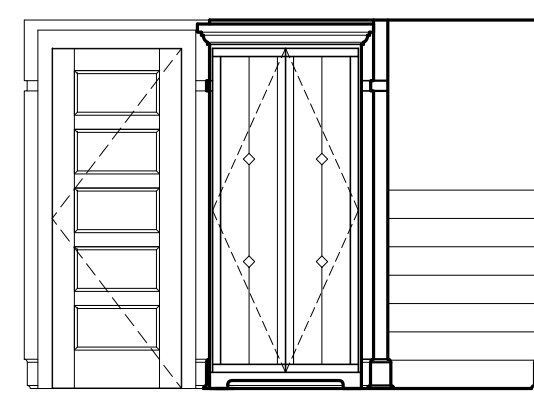
13 INTERIOR ELEVATION UNIT 101A  
1/4"=1'-0"



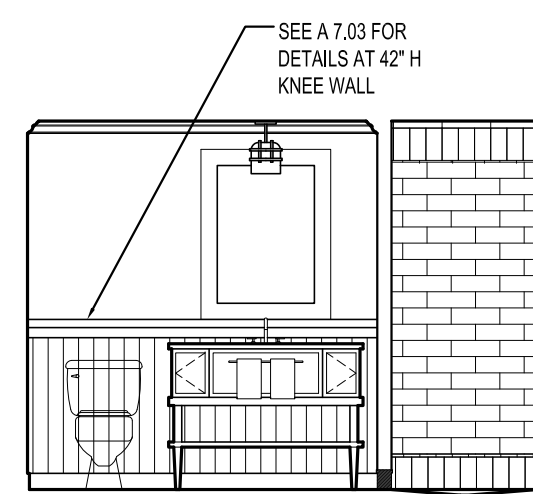
5 INTERIOR ELEVATION UNIT 101A  
1/4"=1'-0"



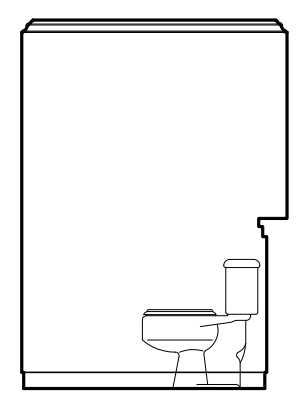
6 INTERIOR ELEVATION UNIT 101A  
1/4"=1'-0"



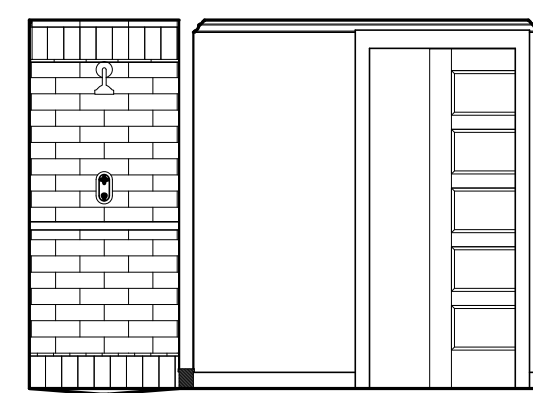
15 INTERIOR ELEVATION UNIT 101A  
1/4"=1'-0"



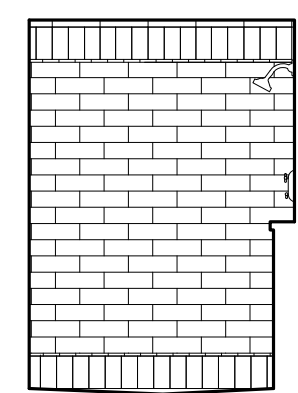
7 INTERIOR ELEVATION UNIT 101A  
1/4"=1'-0"



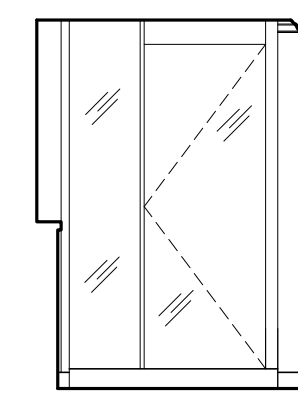
8 INTERIOR ELEVATION UNIT 101A  
1/4"=1'-0"



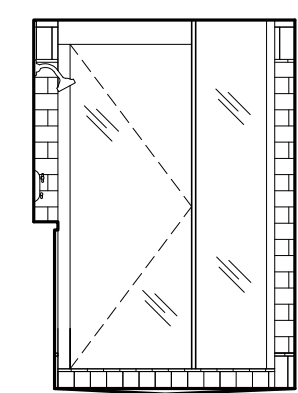
9 INTERIOR ELEVATION UNIT 101A  
1/4"=1'-0"



10 INTERIOR ELEVATION UNIT 101A  
1/4"=1'-0"



11 INTERIOR ELEVATION UNIT 101A  
1/4"=1'-0"



12 INTERIOR ELEVATION UNIT 101A  
1/4"=1'-0"

Date: 04 March 2013  
Scale: As Noted  
Project: THE INN AT DIAMOND COVE, LLC  
McKENLEY COURT  
GREAT DIAMOND ISLAND, MAINE

Revisions:

Architect: ARCHETYPE architects  
48 Union Wharf Portland, Maine 04101  
(207) 772-6022 Fax (207) 772-4056

Interior Designer: truexcellins INTERIORS  
208 BATTERY STREET BURLINGTON, VERMONT 05401 USA  
Phone 802-688-2775 Fax 802-227-1076  
ARCHITECTURE INTERIOR DESIGN truexcellins.com

Prepared For: The Inn at Diamond Cove, LLC.  
PO BOX 3572  
PORTLAND, ME 04101

A9.01