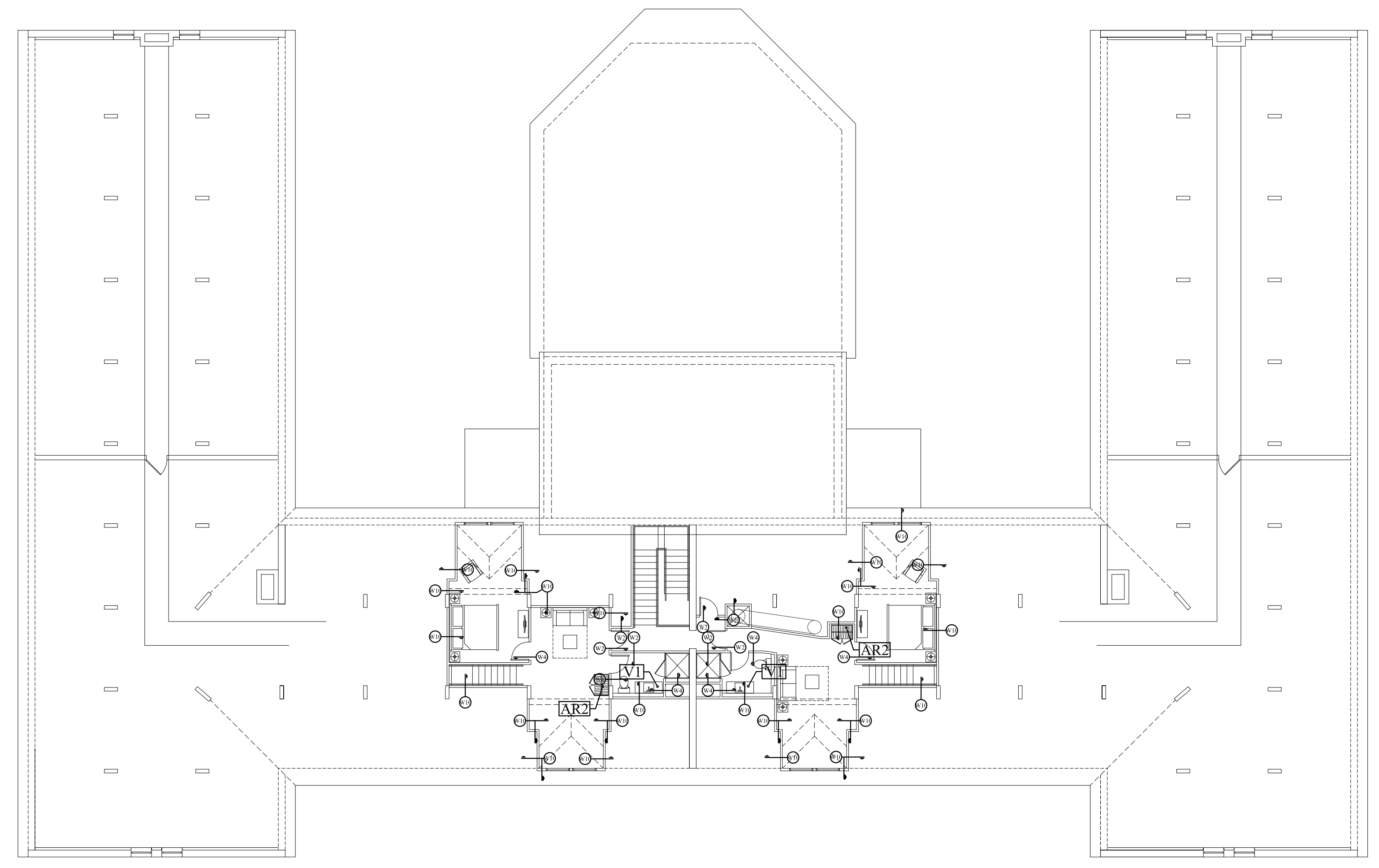
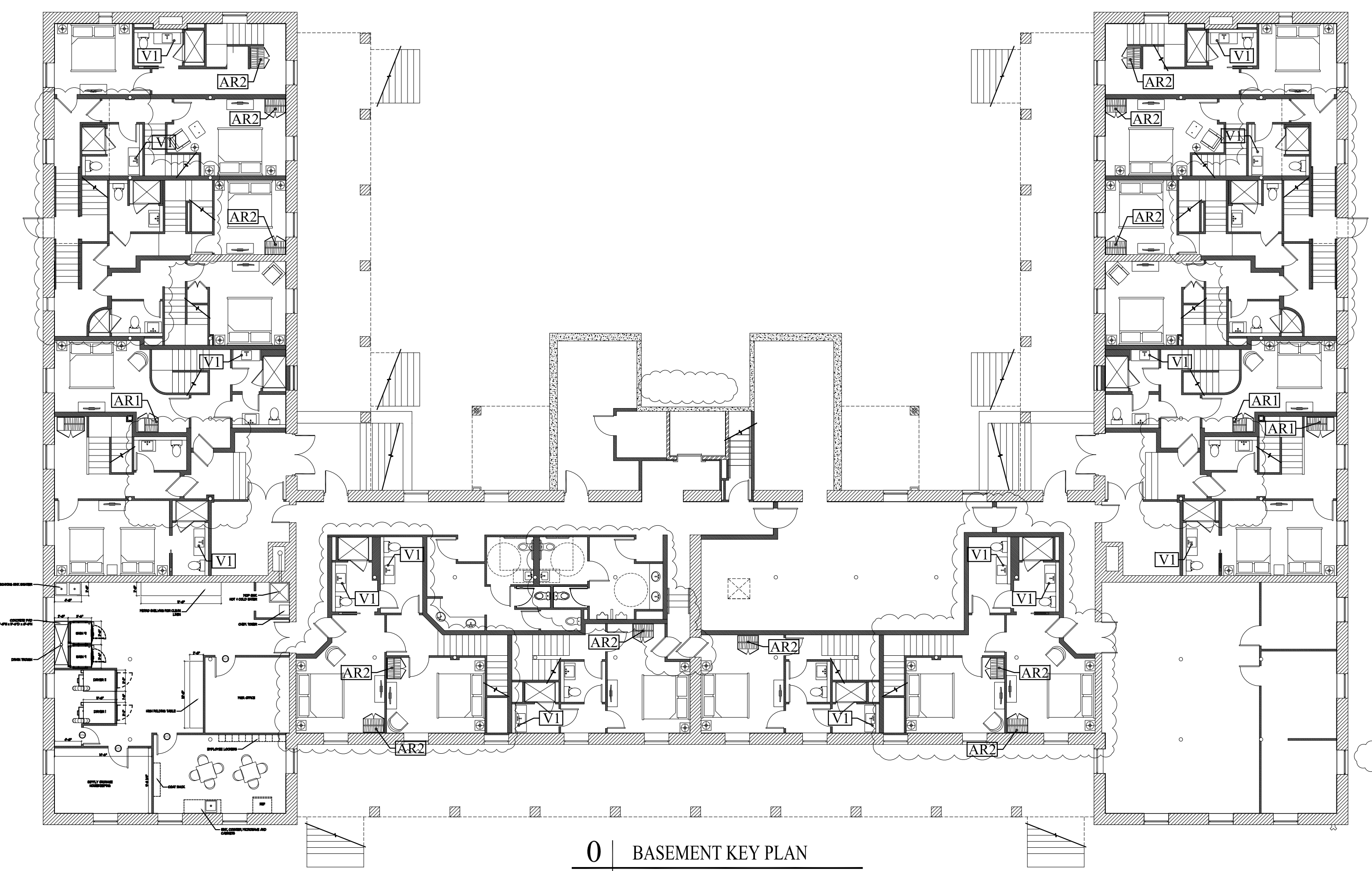


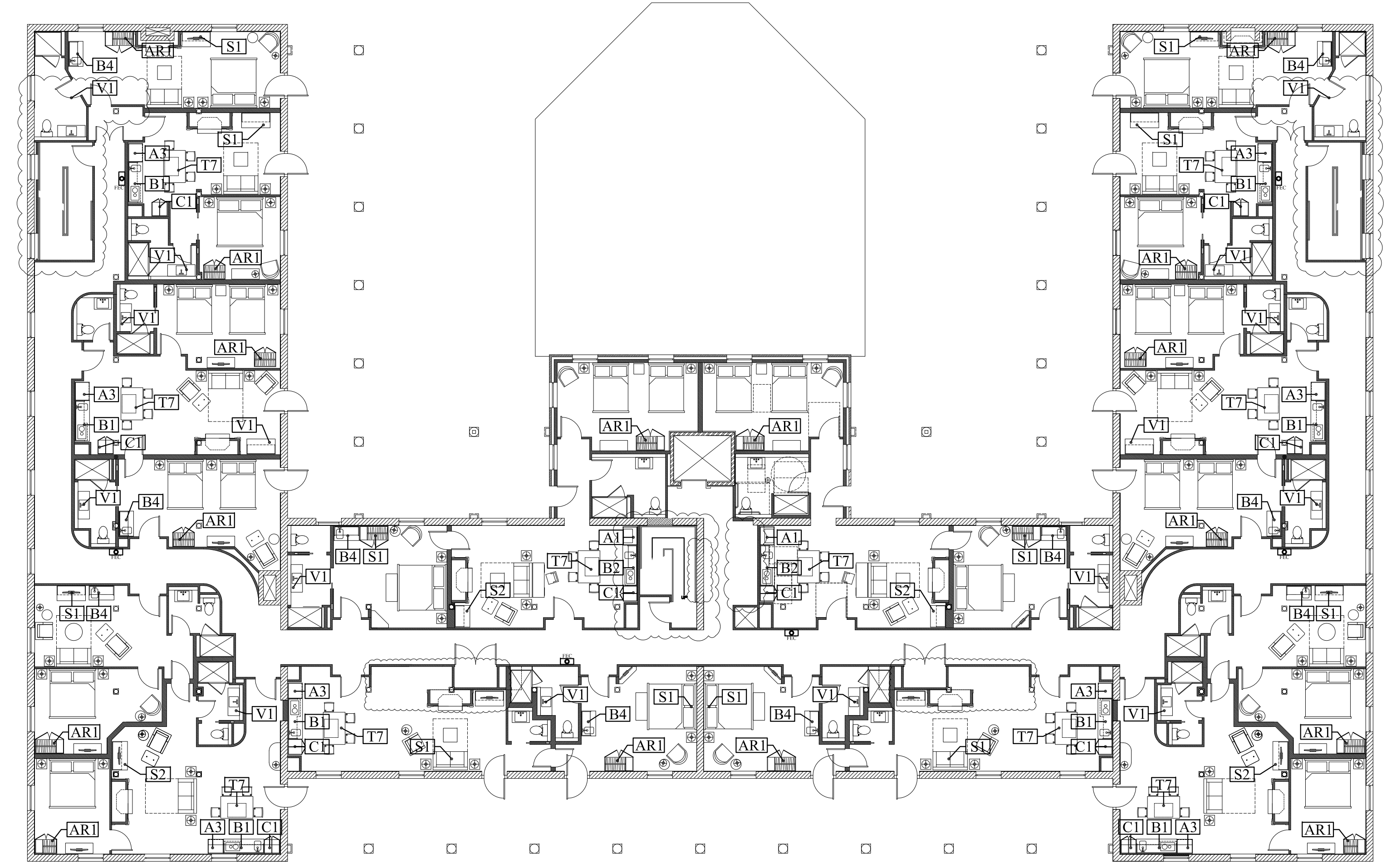
1 FIRST FLOOR KEY PLAN
SCALE: N.T.S.



3 THIRD FLOOR KEY PLAN
SCALE: N.T.S.



0 BASEMENT KEY PLAN
SCALE: N.T.S.



2 SECOND FLOOR KEY PLAN
SCALE: N.T.S.

Prepared For: The Inn at Diamond Cove, LLC. PO BOX 3572 PORTLAND, ME 04101	
Interior Designer: truexcollins INTERIORS 299 BATTERY STREET BURLINGTON, VERMONT 05401 USA Phone 802.656.2775 800.227.1076 ARCHITECTURE INTERIOR DESIGN truexcollins.com	Architect: ARCHETYPE architects 48 Union Wharf Portland, Maine 04101 (207) 772-6022 Fax (207) 772-4056
Project: THE INN AT DIAMOND COVE, LLC MCKINLEY COURT GREAT DIAMOND ISLAND, MAINE	
Date: 04 March 2013	Scale: NOT TO SCALE
Revisions:	
FURNISHING KEY PLAN	
A8.10	