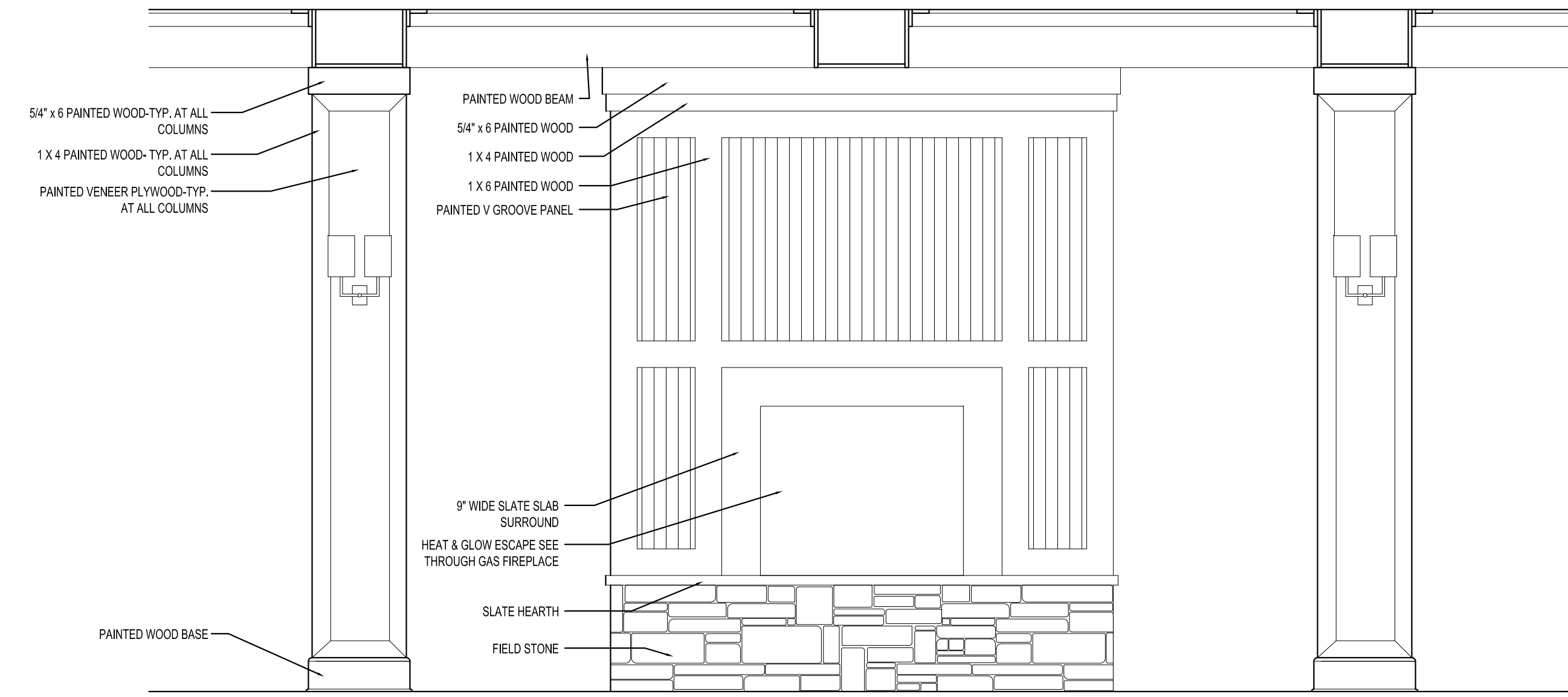
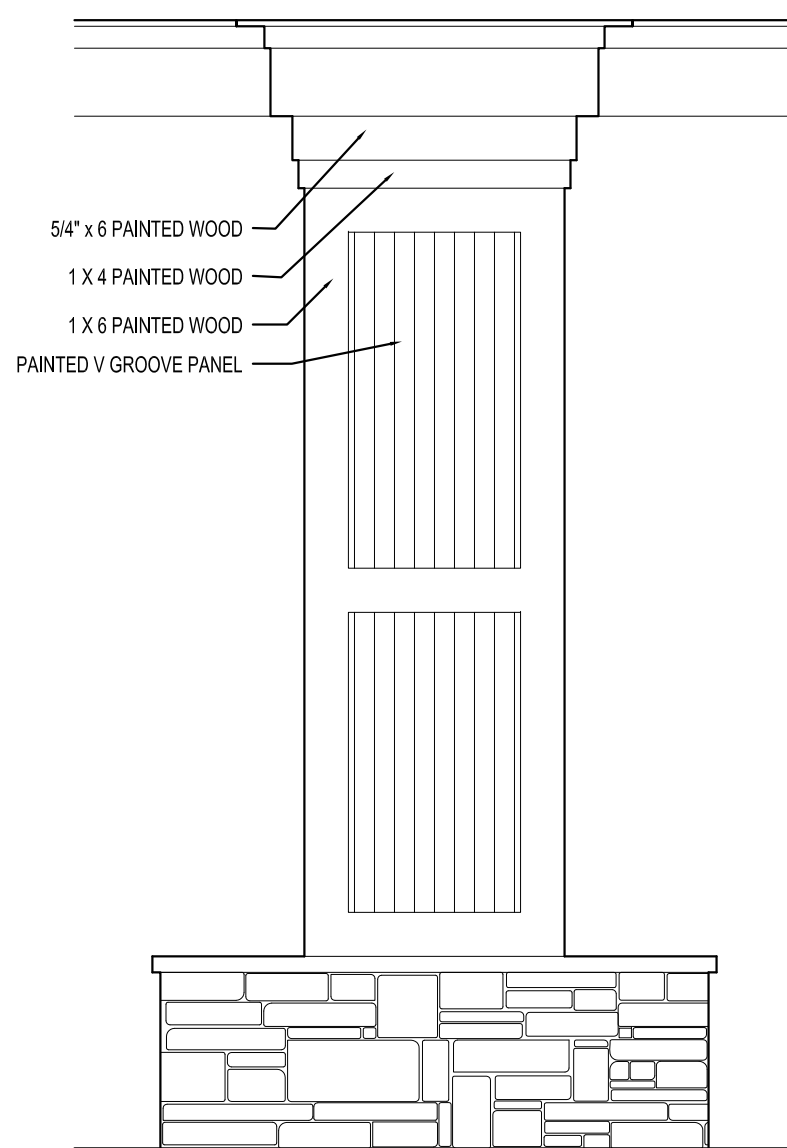


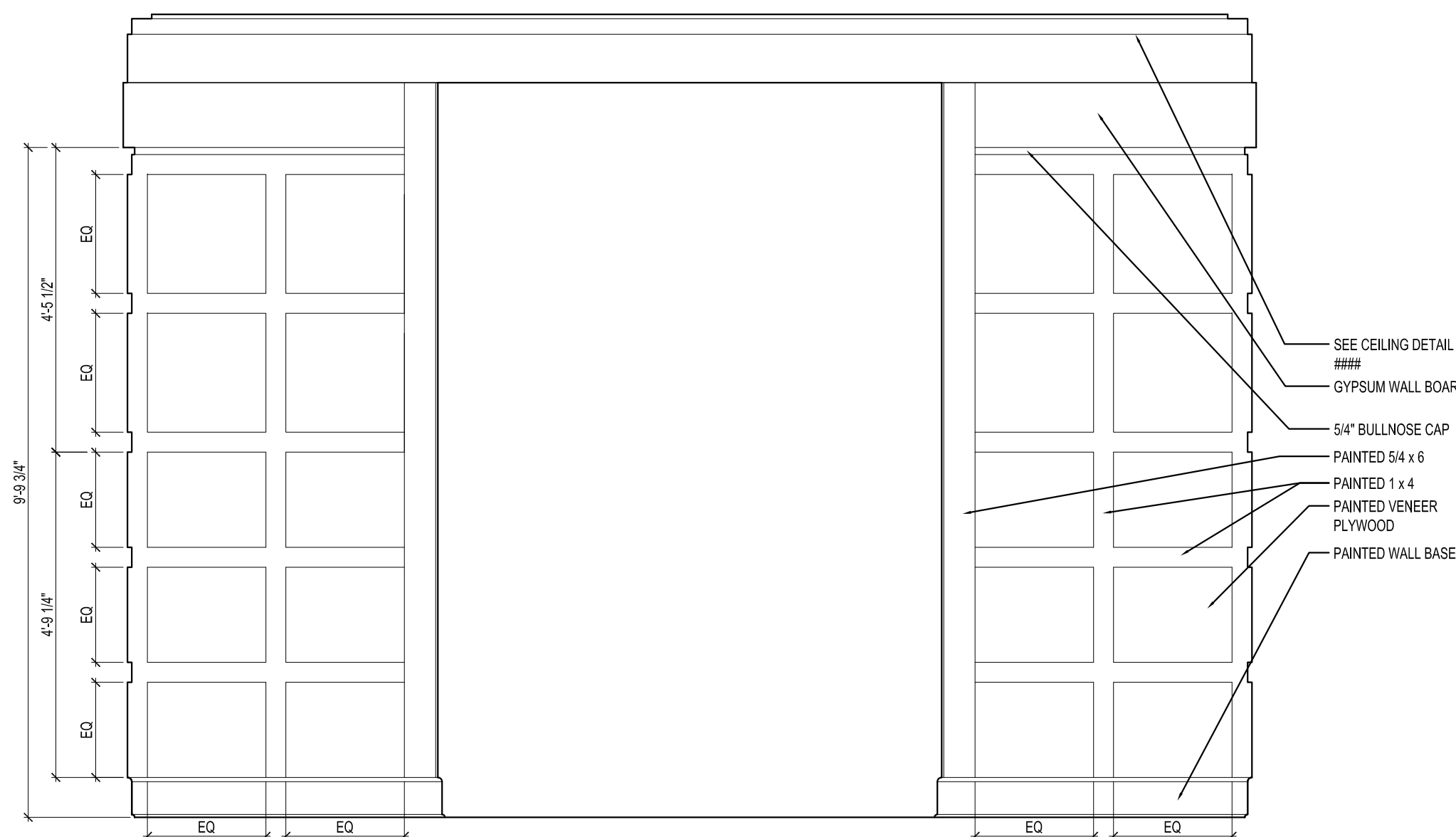
8 INTERIOR ELEVATION AT LOBBY
1/2"=1'-0"



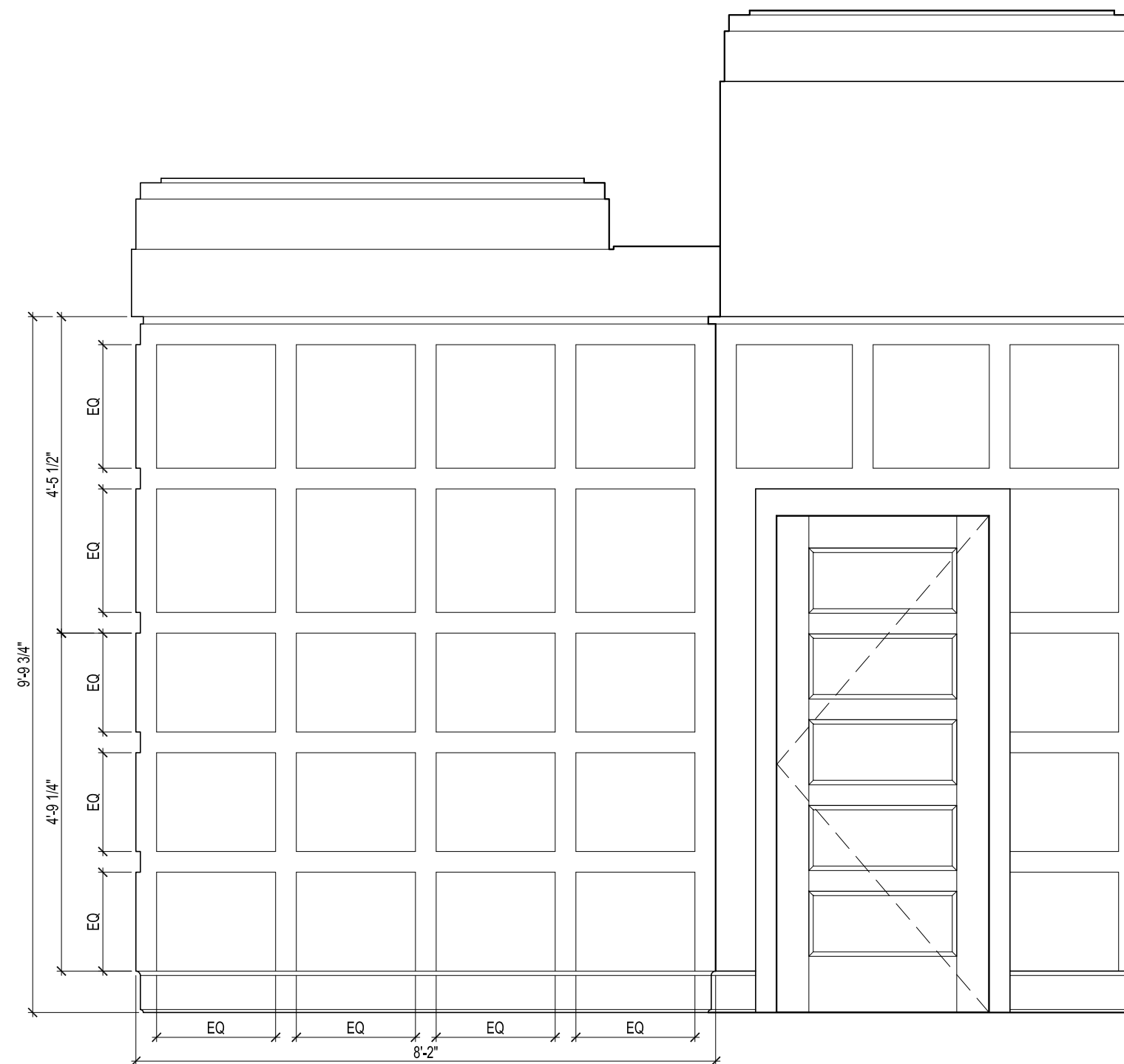
9 INTERIOR ELEVATION AT FIREPLACE
1/2"=1'-0"



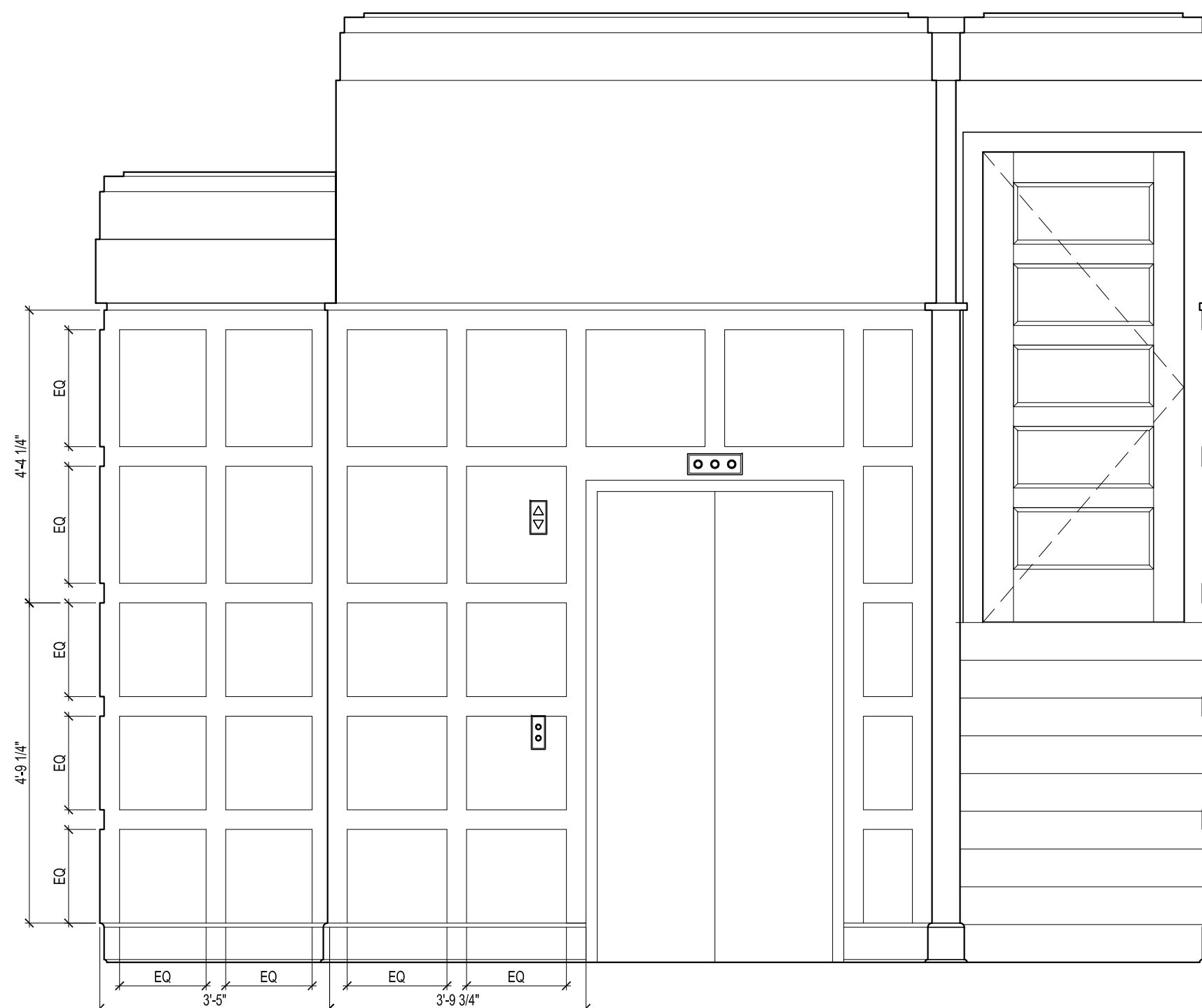
10 INTERIOR ELEVATION AT SIDE OF LOBBY FIREPLACE
1/2"=1'-0"



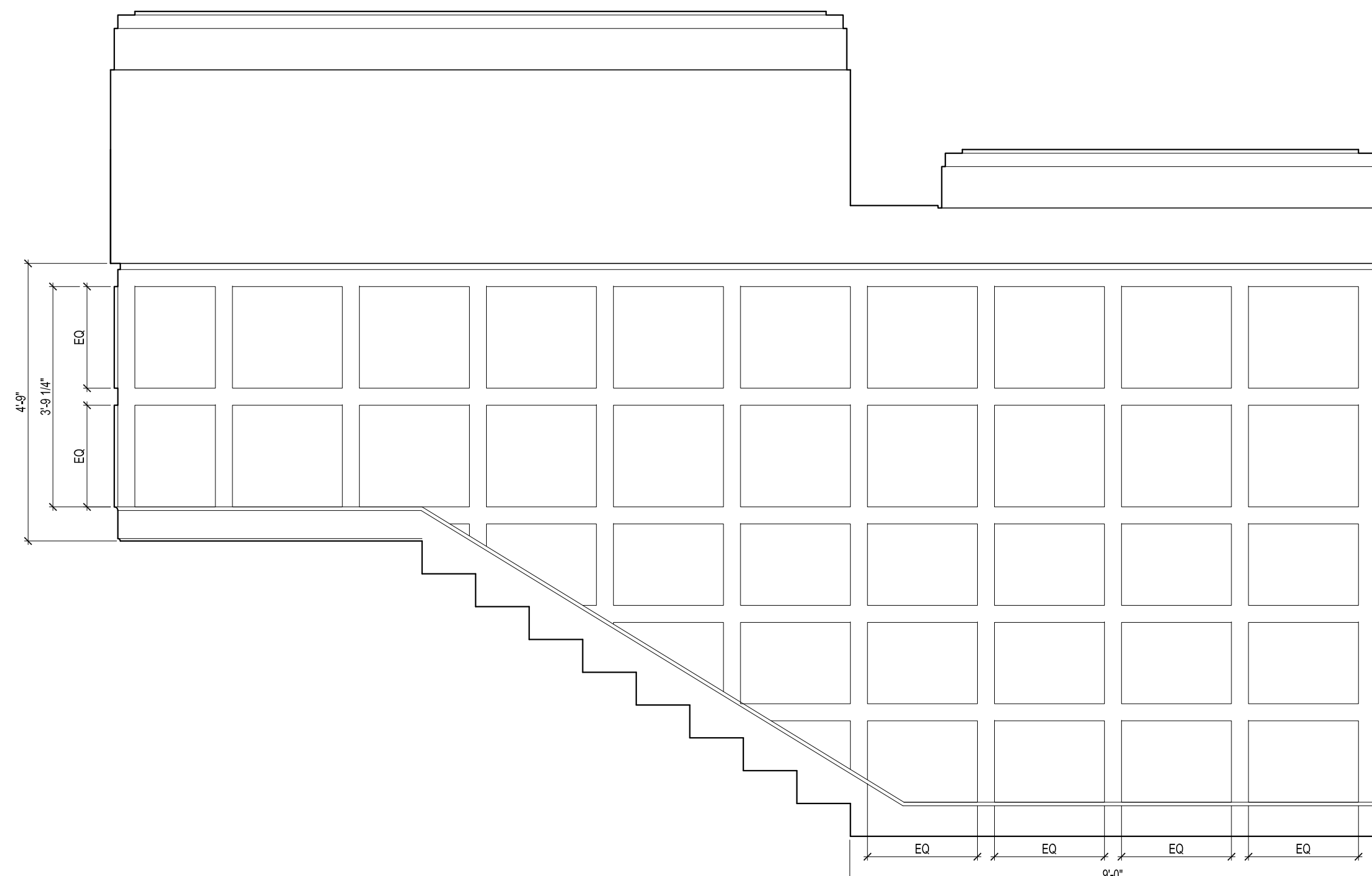
11 INTERIOR ELEVATION AT ELEVATOR LOBBY
1/2"=1'-0"



12 INTERIOR ELEVATION AT ELEVATOR LOBBY
1/2"=1'-0"

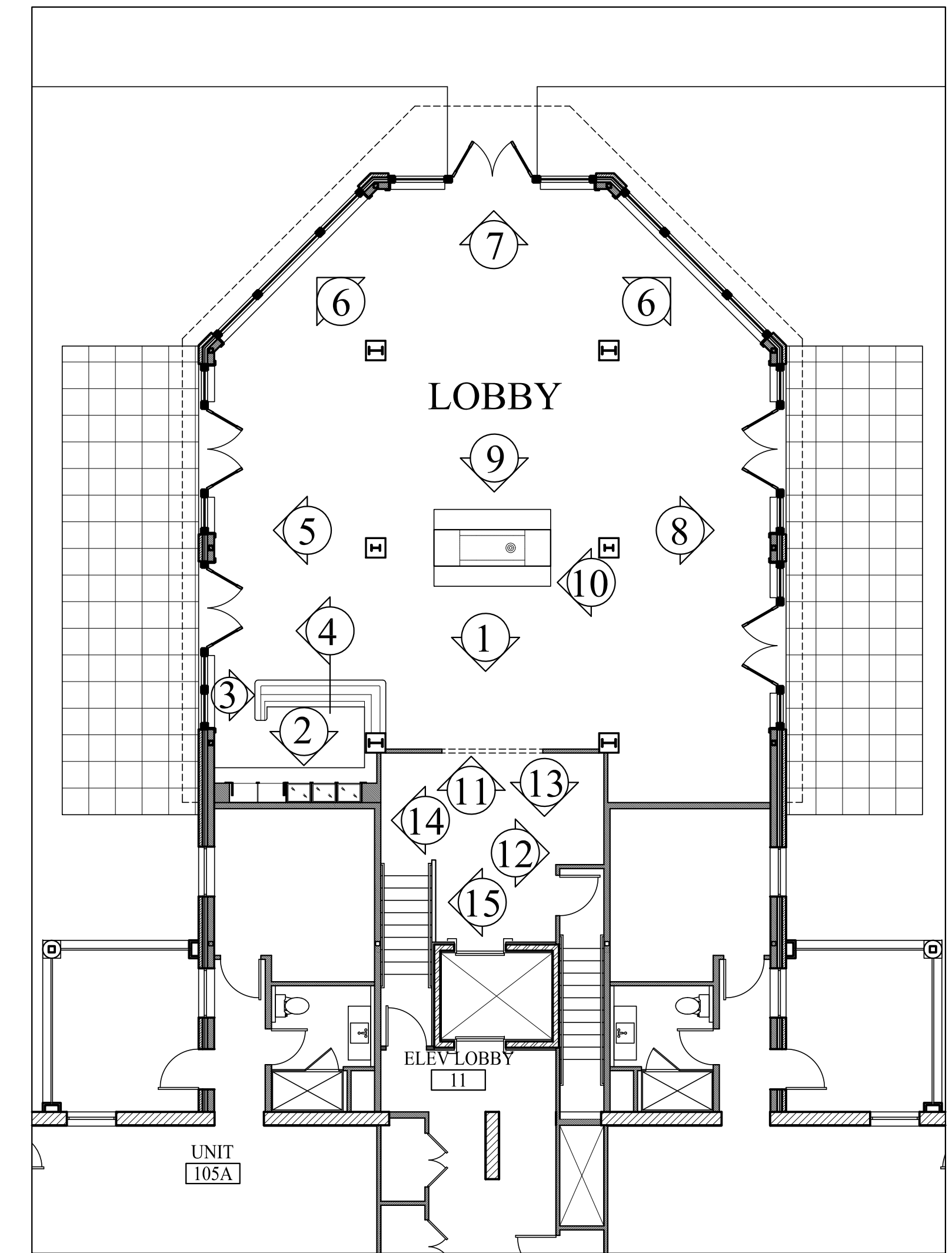


13 INTERIOR ELEVATION AT ELEVATOR LOBBY
1/2"=1'-0"



14 INTERIOR ELEVATION AT ELEVATOR LOBBY
1/2"=1'-0"

KEY PLAN : NTS



Prepared For:
The Inn at Diamond Cove, LLC.
PO BOX 3572
PORTLAND, ME 04101

Interior Designer:
truexcollins
INTERIORS
288 BALTIMORE STREET, SUITE 201, PORTLAND, ME 04101
Phone: 802-658-2775 Fax: 800-227-1076
ARCHITECTURE | INTERIOR DESIGN | truexcollins.com

Architect:
ARCHETYPE
architects
48 Union Wharf, Portland, Maine 04101
(207) 772-6022 Fax (207) 772-4056

Project:
THE INN AT DIAMOND COVE, LLC
McKINLEY COURT
GREAT DIAMOND ISLAND, MAINE

Revisions:

Date: 04 March 2013
Scale: 1/8" = 1'-0"
LOBBY INTERIOR ELEVATIONS

A7.01