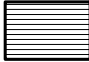



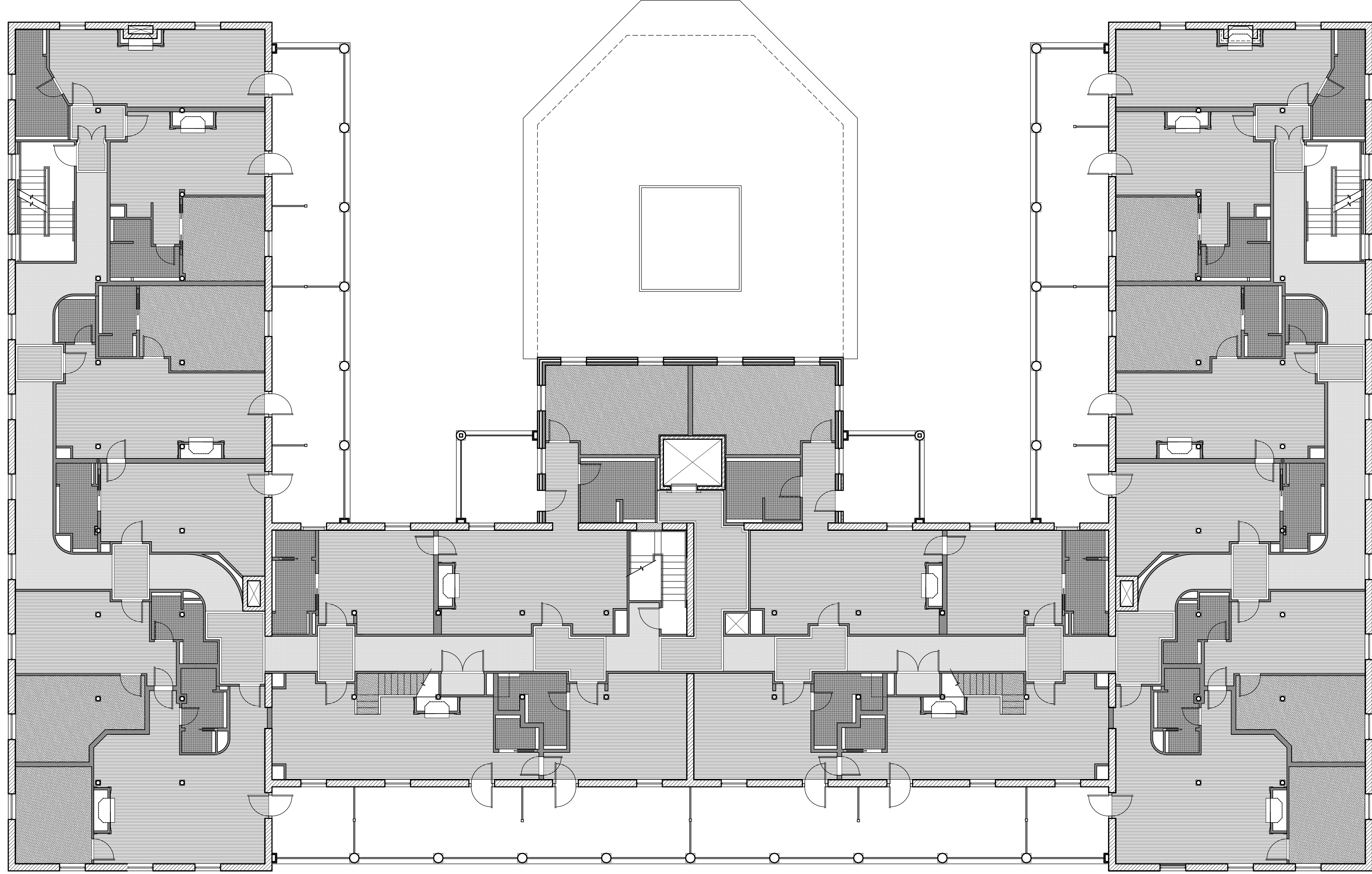
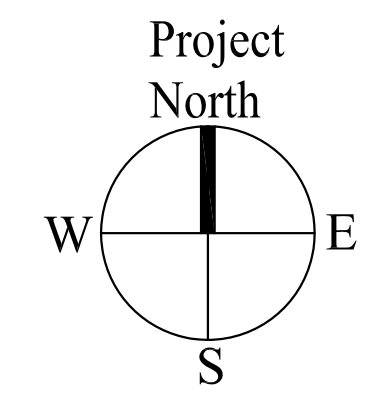


LEGEND:

	HARDWOOD
	TILE
	CARPETING
	PUBLIC SPACE CARPETING



1 | SECOND FLOOR FINISH SCHEDULE
SCALE: 1/8"=1'-0"



<p>Date: 04 March, 2013</p>	<p>Scale: 1/8" = 1'-0"</p>	<p>Revisions:</p> <table border="1" style="width: 100%; height: 40px;"> <tr> <td style="width: 5%;"> </td> <td style="width: 95%;"> </td> </tr> </table>			<p>Project: THE INN AT DIAMOND COVE, LLC <small>McKINLEY COURT GREAT DIAMOND ISLAND, MAINE</small></p>	<p>Architect: ARCHETYPE architects <small>48 Union Wharf Portland, Maine 04101 (207) 772-6022 Fax (207) 772-4056</small></p>	<p>Interior Designer: truexcollins <small>299 BATTERY STREET BURLINGTON, VERMONT 05401 USA Phone 802.656.2775 800.227.1076 ARCHITECTURE INTERIOR DESIGN truexcollins.com</small></p>	<p>Prepared For: The Inn at Diamond Cove, LLC. <small>PO BOX 3572 PORTLAND, ME 04101</small></p>
<h1 style="margin: 0;">A6.12</h1>								