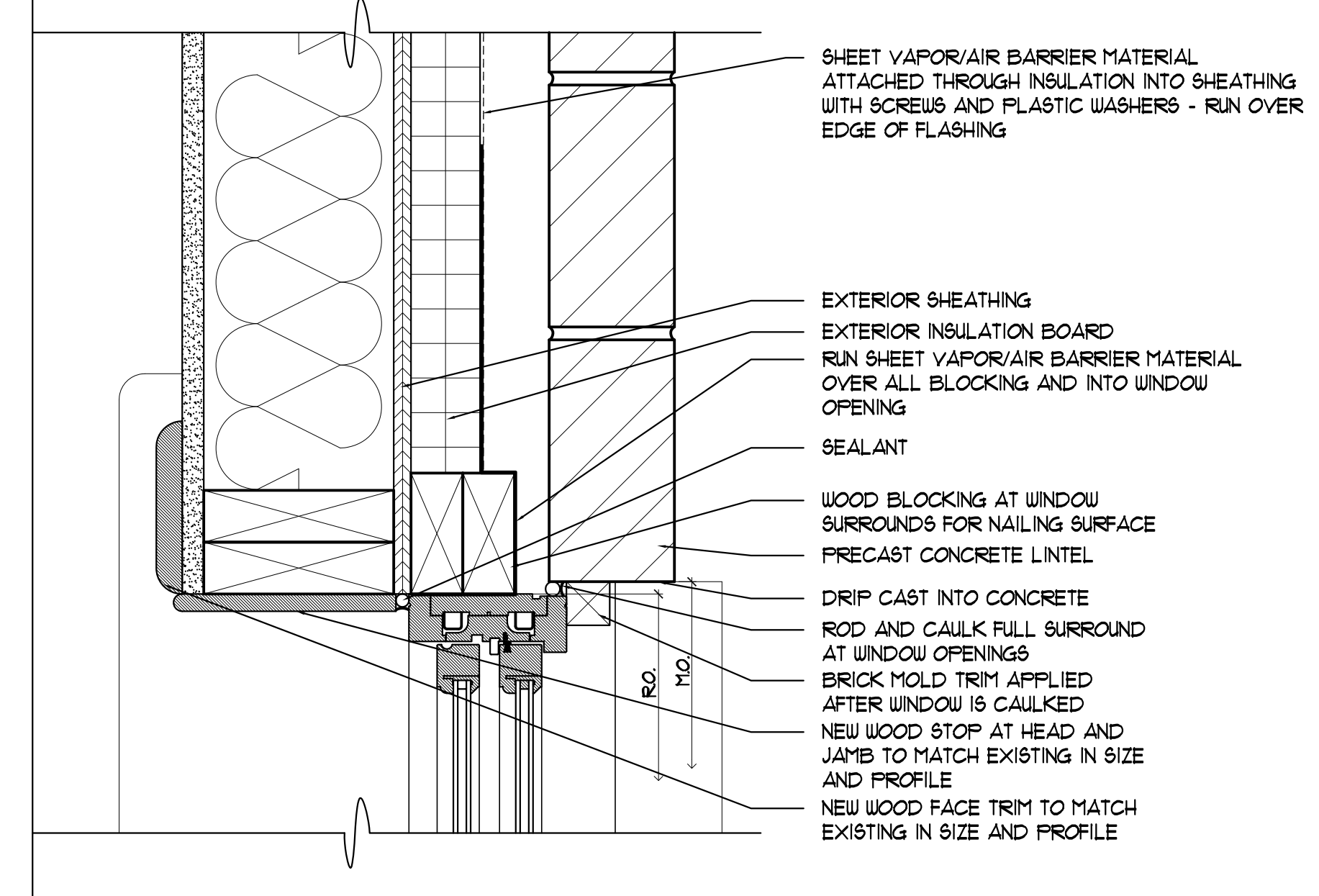
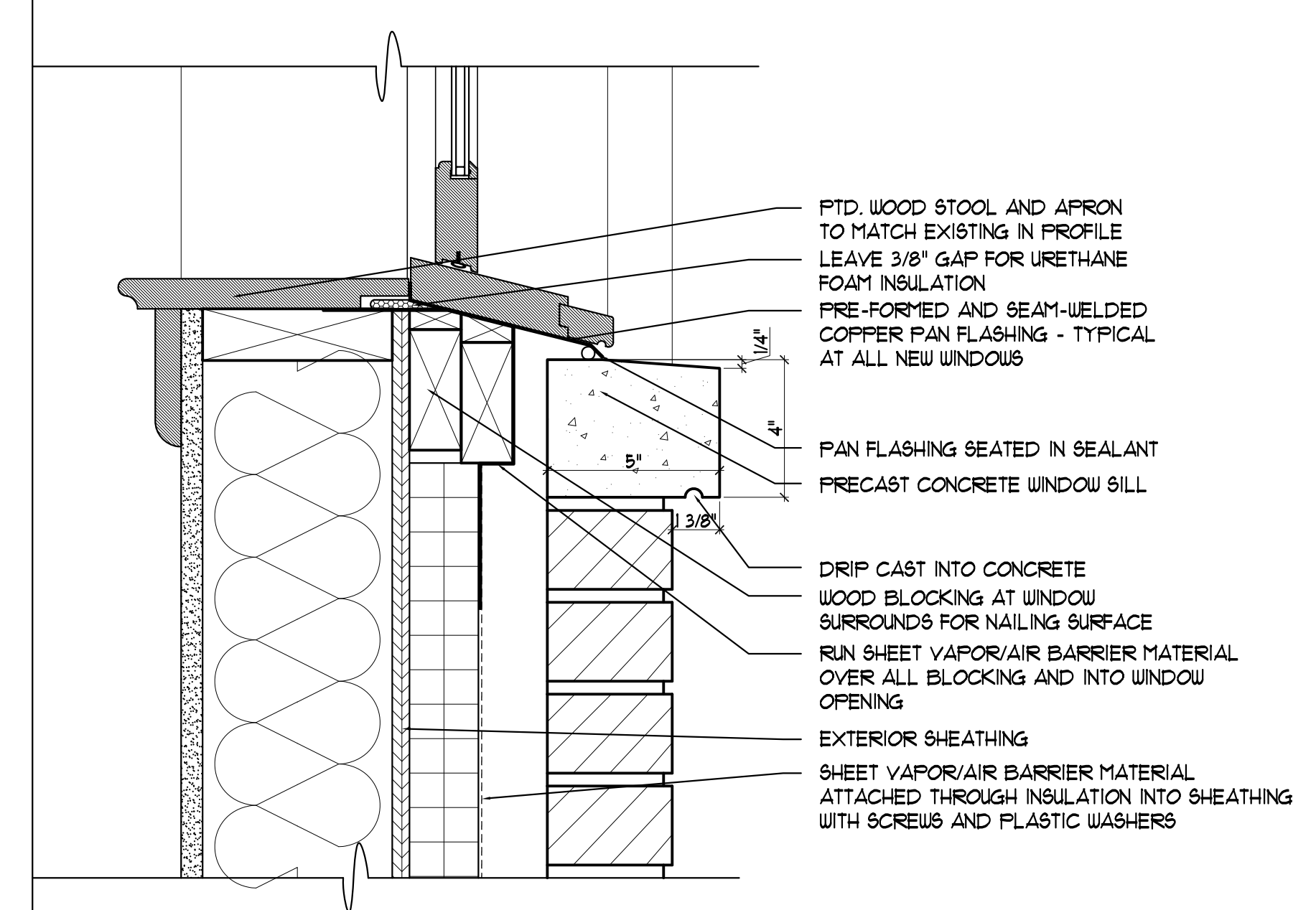


**05** HEAD DETAIL - NEW CONSTRUCTION  
SCALE: 3" = 1'-0"

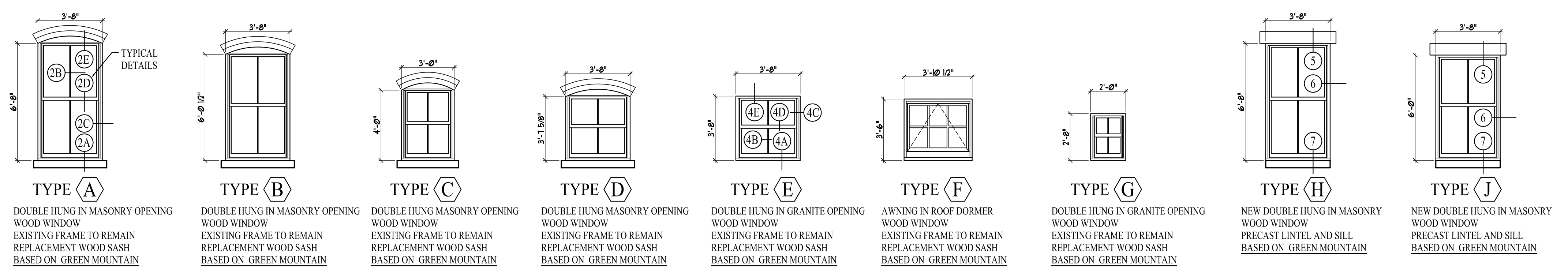


**06** JAMB DETAIL - NEW CONSTRUCTION  
SCALE: 3" = 1'-0"



**07** SILL DETAIL - NEW CONSTRUCTION  
SCALE: 3" = 1'-0"

**\* WINDOW SCHEDULE \***



WINDOW SCHEDULE  
SCALE: 1/4" = 1'-0"

Prepared For:  
**The Inn at Diamond Cove, LLC.**  
PO BOX 3572  
PORTLAND, ME 04101

Interior Designer:  
**truexcollins**  
INTERIORS  
209 BATTERY STREET BURLINGTON, VERMONT 05401 USA  
Phone 802.656.2775 800.227.1076  
ARCHITECTURE | INTERIOR DESIGN | truexcollins.com

Architect:  
**ARCHETYPE**  
architects  
48 Union Wharf Portland, Maine 04101  
(207) 772-6022 Fax (207) 772-4056

Project:  
**THE INN AT DIAMOND COVE, LLC**  
McKINLEY COURT  
GREAT DIAMOND ISLAND, MAINE

Revisions:


Date: 04 March 2013  
Scale: VARIES  
**WINDOW DETAILS**

**A5.11**