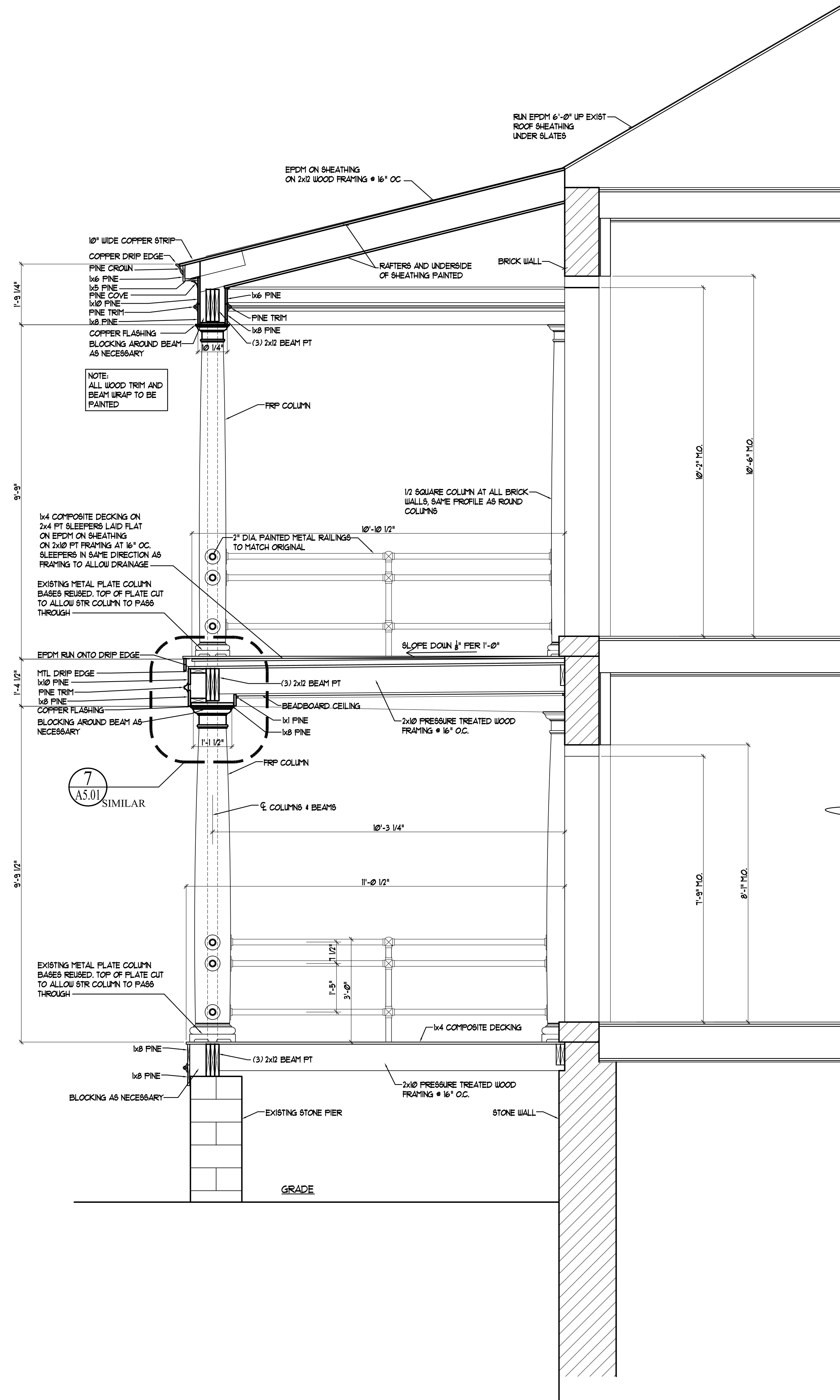
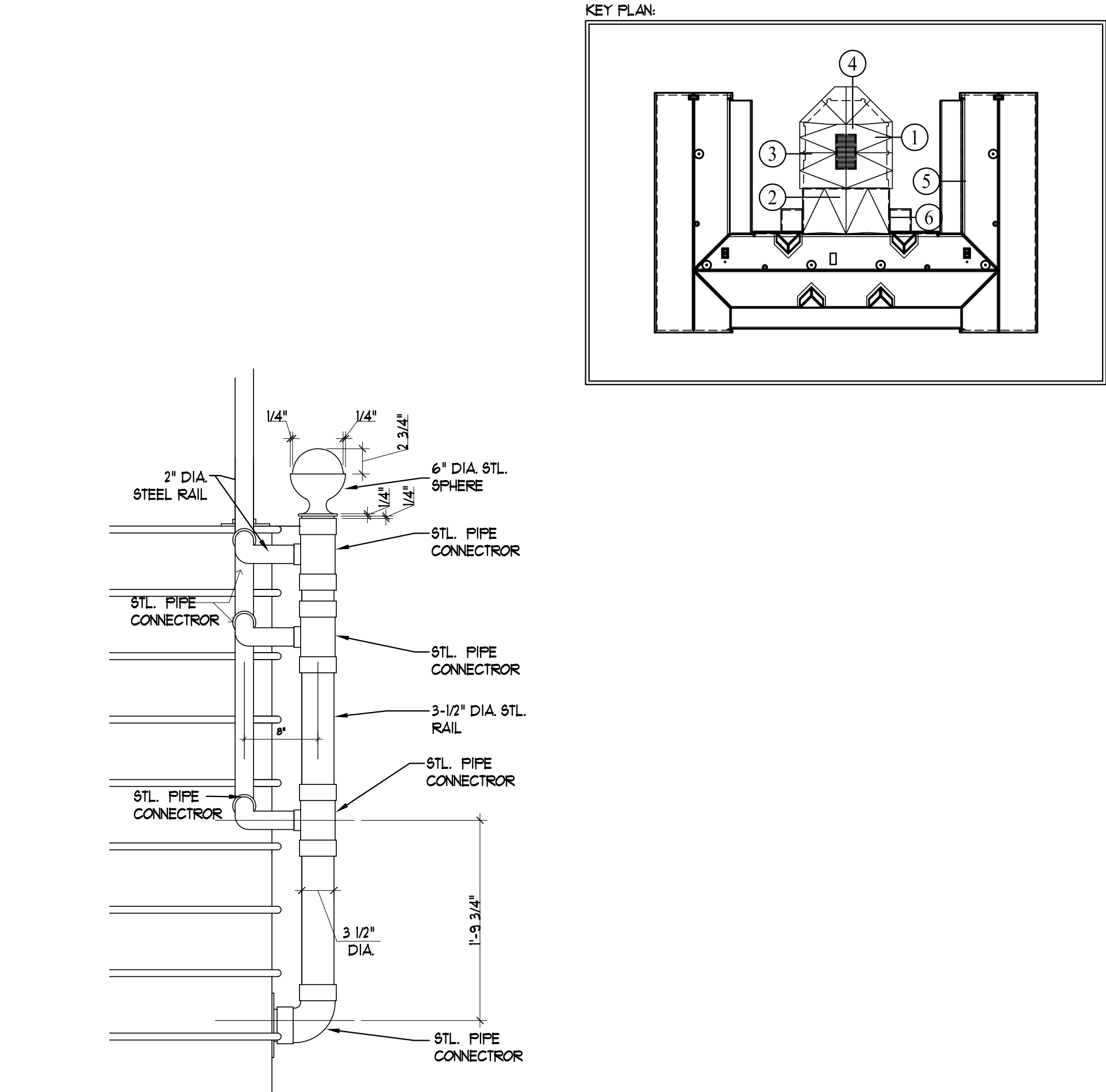


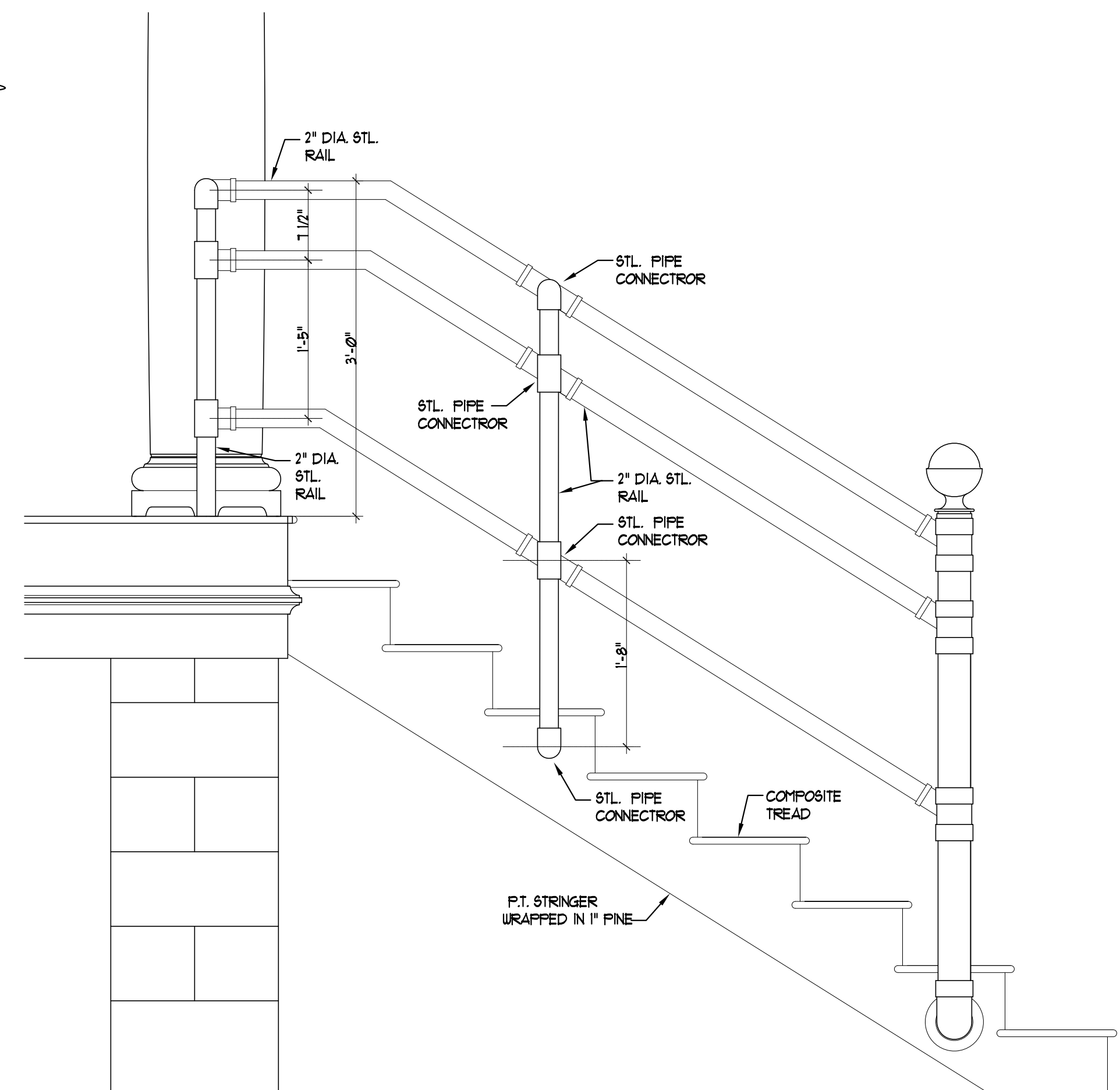
6 WALL SECTION - PORCH AT NEW CONSTRUCTION
SCALE: 1/2"=1'-0"



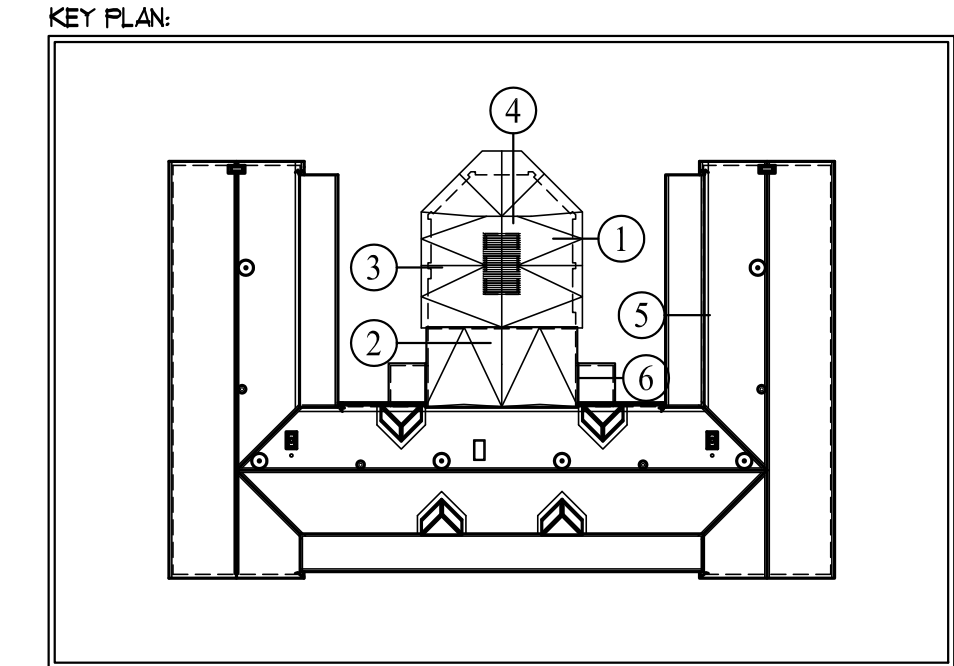
5 WALL SECTION - RECONSTRUCTED PORCH AT EXISTING BUILDING
SCALE: 1/2"=1'-0"



B RAILING DETAILS AT PORCHES
SCALE: 1"=1'-0"



A RAILING DETAILS AT PORCHES
SCALE: 1"=1'-0"



Prepared For: **The Inn at Diamond Cove, LLC.**
 PO BOX 3572
 PORTLAND, ME 04101

Interior Designer: **truexullins INTERIORS**
 209 BATTERY STREET BURLINGTON, VERMONT 05401 USA
 Phone 802.656.2775 • 802.227.1076
 ARCHITECTURE | INTERIOR DESIGN | truexullins.com

Architect: **ARCHETYPE architects**
 48 Union Wharf Portland, Maine 04101
 (207) 772-6022 Fax (207) 772-4056

Project: **THE INN AT DIAMOND COVE, LLC**
 MCKINLEY COURT
 GREAT DIAMOND ISLAND, MAINE

Revisions:

Date: 04 March 2013
 Scale: 1/2" = 1'-0"

PORCH SECTIONS

A3.11