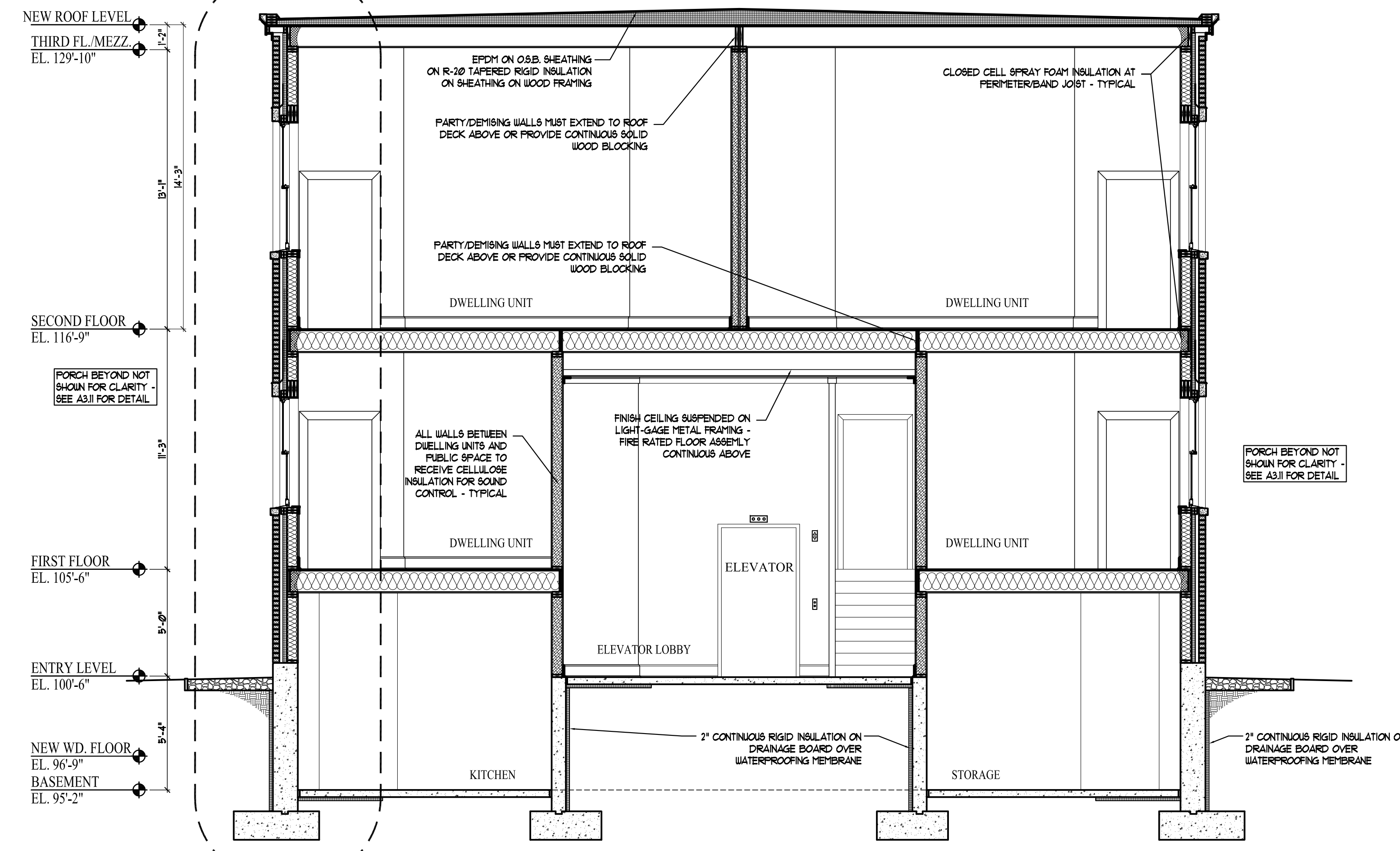
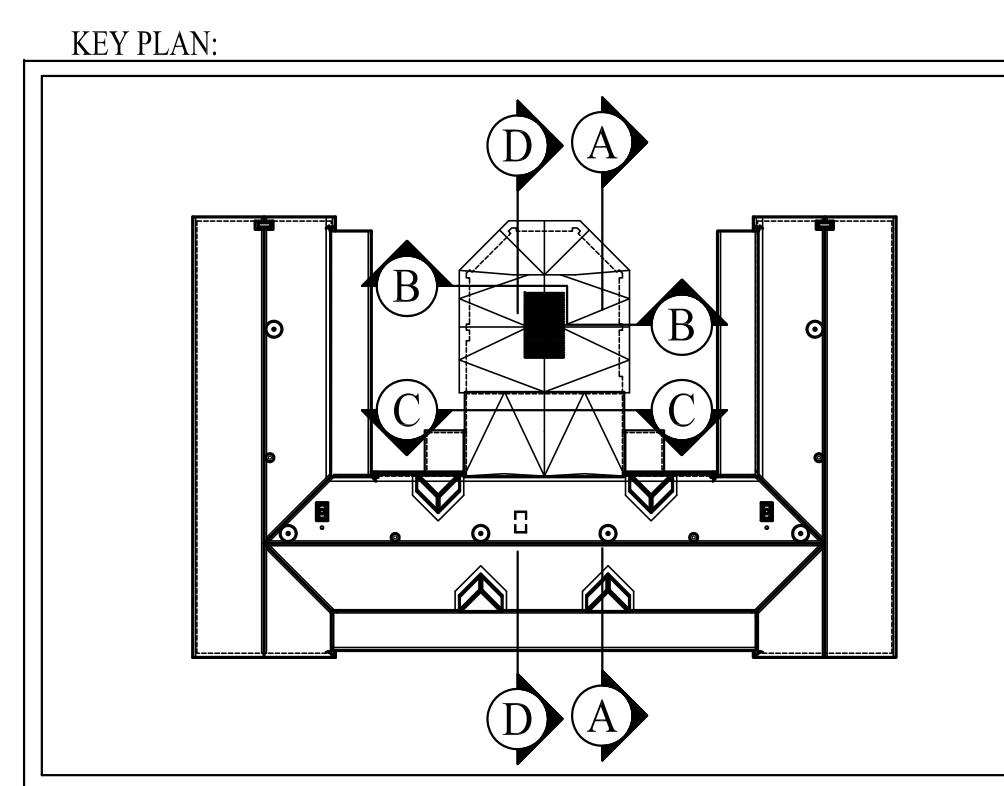


D BUILDING SECTION - LONGITUDINAL THROUGH ADDITION AND ELEVATOR SHAFT
SCALE: 1/4"=1'-0"



C BUILDING SECTION - TRANSVERSE AT ELEVATOR LOBBY - ADDITION
SCALE: 1/4"=1'-0"



Prepared For: The Inn at Diamond Cove, LLC. PO BOX 3572 PORTLAND, ME 04101	
Interior Designer: truexculins INTERIORS 209 BATTERY STREET BURLINGTON, VERMONT 05401 USA Phone 802.656.2775 800.227.1076 ARCHITECTURE INTERIOR DESIGN truexculins.com	
Architect: ARCHETYPE architects 48 Union Wharf Portland, Maine 04101 (207) 772-6022 Fax (207) 772-4056	
Project: THE INN AT DIAMOND COVE, LLC MCKINLEY COURT GREAT DIAMOND ISLAND, MAINE	
Revisions:	
Date: 04 March 2013	Scale: 1/4" = 1'-0"
BUILDING SECTIONS	
A3.02	