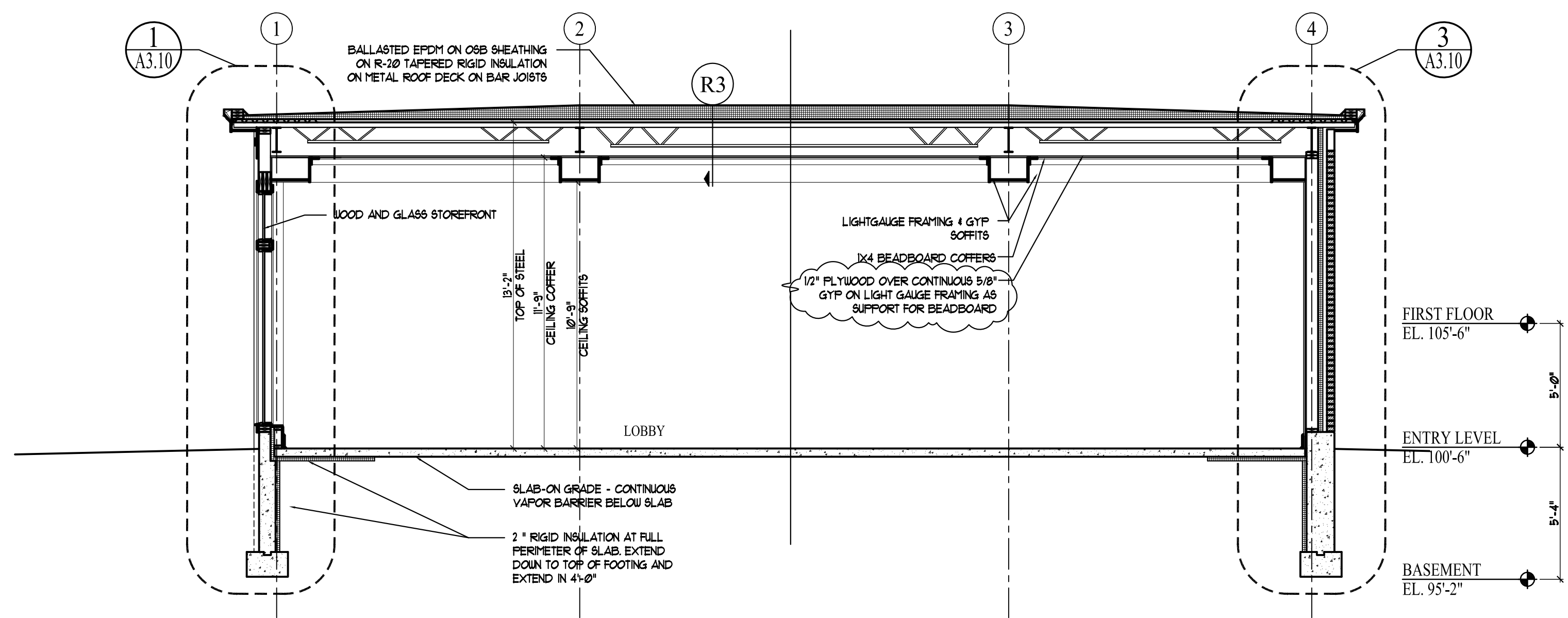
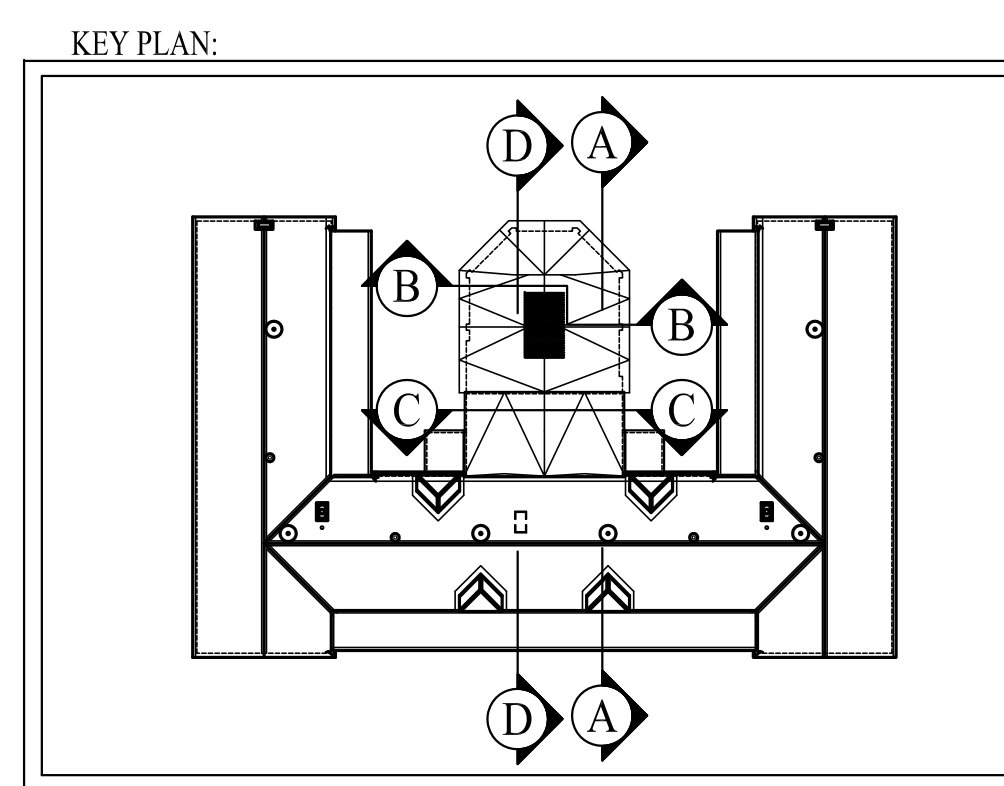


A BUILDING SECTION
SCALE: 1/4"=1'-0"



B BUILDING SECTION - TRANSVERSE THROUGH LOBBY
SCALE: 1/4"=1'-0"



Prepared For: The Inn at Diamond Cove, LLC. PO BOX 3572 PORTLAND, ME 04101	Interior Designer: trutexcullins INTERIORS 208 BATTERY STREET BURLINGTON, VERMONT 05401 USA Phone 802.656.2775 Fax 802.227.1076 ARCHITECTURE INTERIOR DESIGN trutexcullins.com
Project: THE INN AT DIAMOND COVE, LLC MCKINLEY COURT GREAT DIAMOND ISLAND, MAINE	Architect: ARCHETYPE architects 48 Union Wharf Portland, Maine 04101 (207) 772-4022 Fax (207) 772-4056
Revisions: 1 2 3	Scale: 1/4" = 1'-0" Date: 04 March 2013 BUILDING SECTIONS A3.01