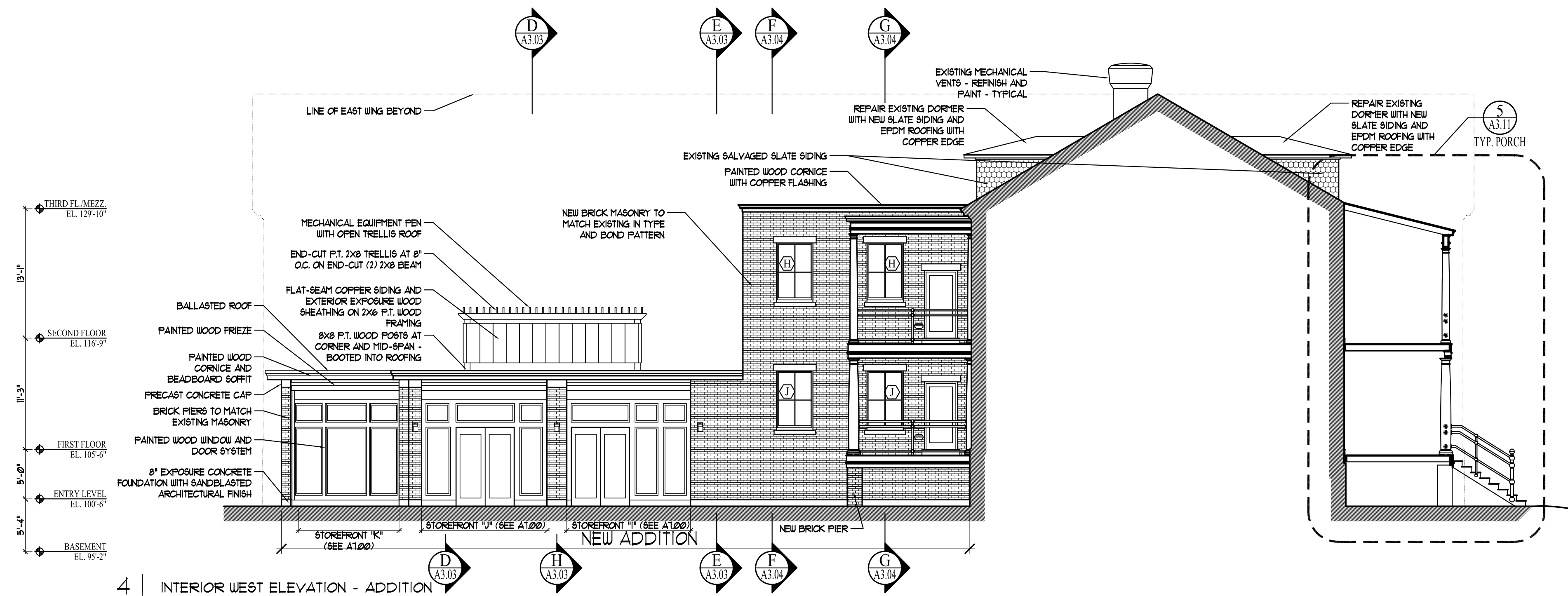


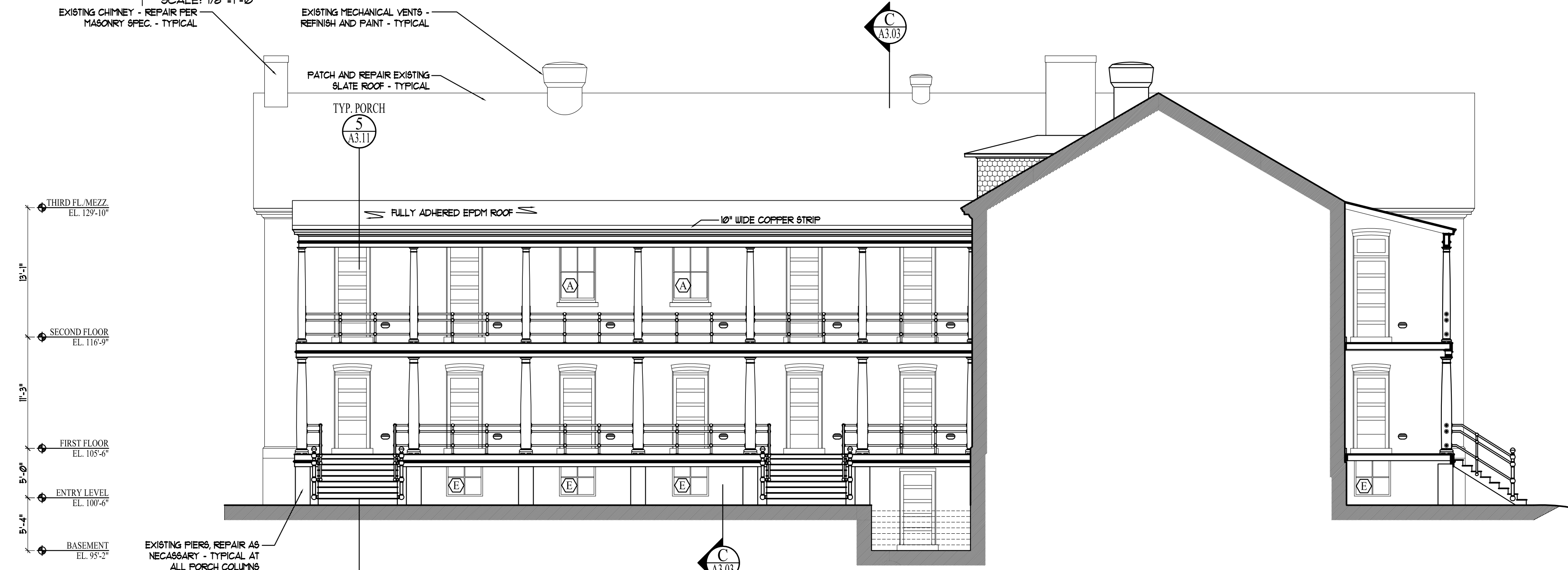
**LEGEND**

BUILDING SECTION	
WALL SECTION	
SECTION DETAIL	
PLAN DETAIL	
WALL TYPE (SEE SHEET A4.01)	
FLOOR/CEILING TYPE (SEE SHEET A4.02)	



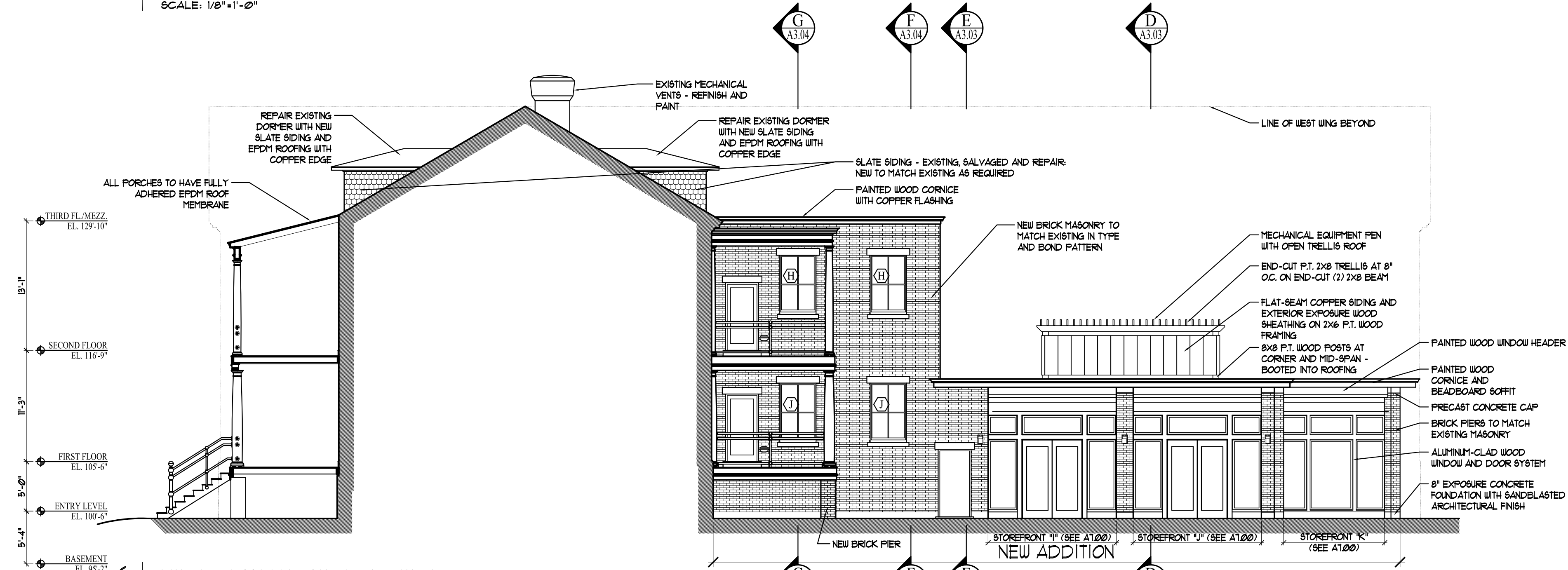
**4 INTERIOR WEST ELEVATION - ADDITION**

SCALE: 1/8" = 1'-0"



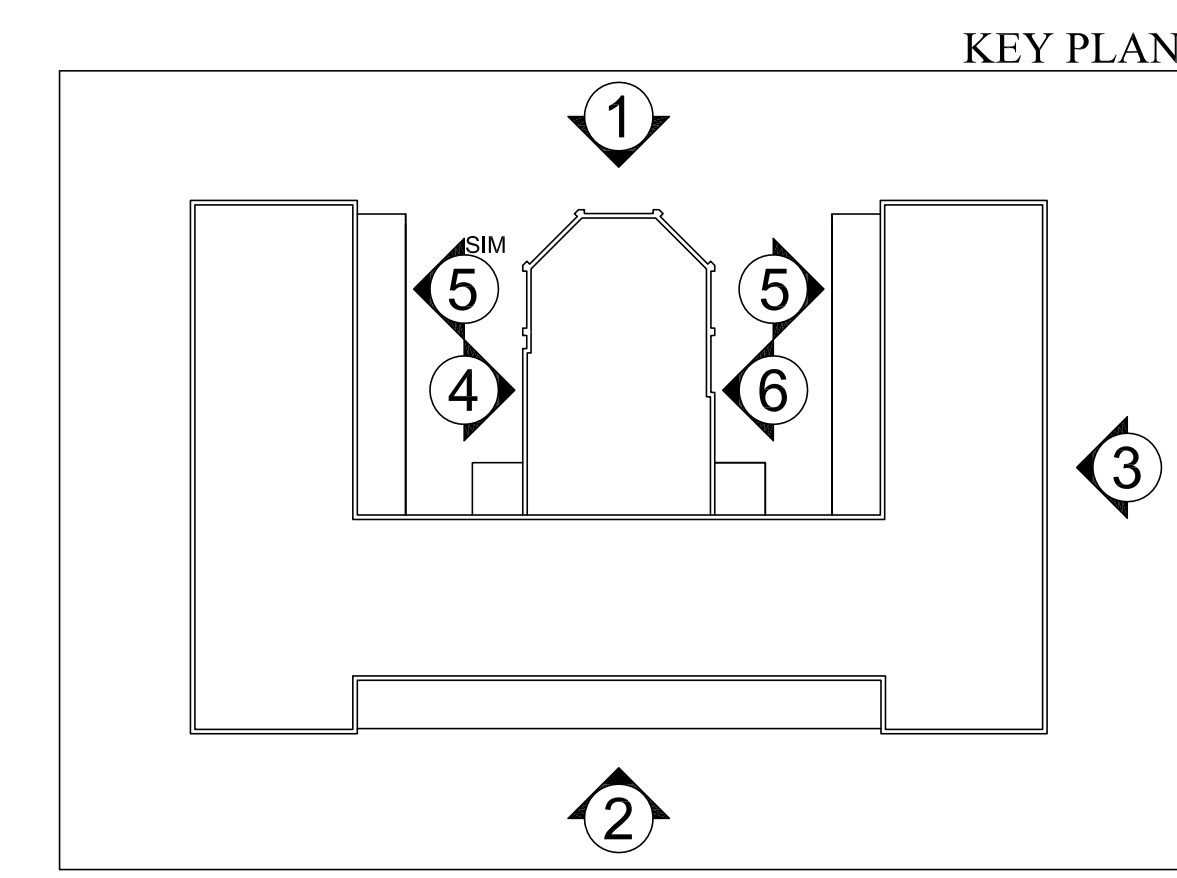
**5 INTERIOR WEST ELEVATION - EAST WING PORCH**

SCALE: 1/8" = 1'-0"



**6 INTERIOR EAST ELEVATION - ADDITION**

SCALE: 1/8" = 1'-0"



Prepared For: **The Inn at Diamond Cove, LLC.**  
 PO BOX 3572  
 PORTLAND, ME 04101

Interior Designer: **truexcollins**  
 INTERIORS  
 298 BATTERY STREET BURLINGTON, VERMONT 05401 USA  
 Phone 802.656.2775 • 800.227.1076  
 ARCHITECTURE | INTERIOR DESIGN | truexcollins.com

Architect: **ARCHETYPE architects**  
 48 Union Wharf Portland, Maine 04101  
 (207) 772-6022 Fax (207) 772-4056

Project: **THE INN AT DIAMOND COVE, LLC**  
 MCKINLEY COURT  
 GREAT DIAMOND ISLAND, MAINE

Scale: 1/8" = 1'-0"  
 Date: 04 March 2013

**BUILDING ELEVATIONS**

**A2.02**