

Project Name: INN AT DIAMOND ISLAND
 Location:
 Engineer: DAVID CHADWICK
 Submitted to: GRANITE CORP
 Submitted by:
 Reference: INN AT DIAMOND ISLAND

Approval:
 Date: 8/27/2013
 Construction:
 Unit #:
 Drawing #:

Performance

Outdoor Unit Model No: RXYQ192PBTJ
 Type:
 Rated Cooling Capacity (Btu/hr): 184000
 Nom Cooling Capacity (Btu/hr): 216000
 Cooling Input Power (kW): 15.59
 SEER: N/A
 IEER: 19.9/19.1
 Rated Heating Capacity (Btu/hr): 206000
 Nom Heating Capacity (Btu/hr): 243000
 Heating Input Power (kW): 17.01
 Heating COP (Btu/hr / Btu/hr): 3.7/3.55
 HSPF: N/A
 Heating COP 17F (Btu/hr / Btu/hr): 2.55/2.45

Condensing Unit Type: 16-Ton VRV-III Heat Pump
 Unit Combination: RXYQ120PBTJ RXYQ72PBTJ
 Rated Cooling Conditions: Indoor: 80°F DB/67°F WB
 Outdoor: 95°F DB/75°F WB
 Rated Heating Conditions: Indoor: 70°F DB/60°F WB
 Outdoor: 47°F DB/43°F WB
 Rated Piping Length (ft): 100 / 50
 Rated Height Difference (ft): 0

Condensing Unit Details

Power Supply (V/Hz/Ph): 208-230/60/3ph
 Power Supply Connections: L1, L2, L3 Ground
 Min. Circuit Amps MCA (A): 43+30
 Max. Overcurrent Protection (MOP)(A): 50+35
 Max. Starting Current MSC(A): 140
 Rated Load Amps RLA (A): (10.8+16.8)+14.2
 Dimensions Height (Inch): 66-1/8
 Dimensions Width (Inch): 85-1/2
 Dimensions Depth (Inch): 30-1/8
 Net Weight (lbs): 620+420

Compressor Type: Inverter
 Capacity Control Range (%): 8 - 100
 Capacity Index Limit: 96 - 249.6 (130%)
 Airflow Rate (CFM): 8,230+6,350
 Gas Pipe Connection (inch): 1-1/8
 Liquid Pipe Connection (inch): 5/8
 H/L Pressure Connection (inch):
 H/L Equalizing Connection (inch):
 Sound Pressure Level (dBA): 62
 Sound Power Level (dBA):
 Max. No. of Indoor Units: 33

System Details

Refrigerant Type: R-410A
 Holding Refrigerant Charge (lbs): 22.1+16.5
 Additional Charge (lbs/ft): install data
 Pre-charge Piping (Length ft): -
 Max. Pipe Length (Total ft):
 Max. Pipe Length (Vertical ft): 164 ft (295 ft) / 295 ft
 Max Height Separation (Ind to Ind ft):

Cooling Operation Range (°F): 23 - 110
 Cooling Range w/Baffle (°F):
 Heating Operation Range (°F): 0 - 77 / (-4) - 60
 Heating Range w/Baffle (°F):

Project Name: INN AT DIAMOND ISLAND
 Location:
 Engineer: DAVID CHADWICK
 Submitted to: GRANITE CORP
 Submitted by:
 Reference: INN AT DIAMOND ISLAND

Approval:
 Date: 8/27/2013
 Construction:
 Unit #:
 Drawing #:

Performance

Outdoor Unit Model No: RXYQ216PBTJ
 Type:
 Rated Cooling Capacity (Btu/hr): 206000
 Nom Cooling Capacity (Btu/hr): 240000
 Cooling Input Power (kW): 17.61
 SEER: N/A
 IEER: 19.2/19.5
 Rated Heating Capacity (Btu/hr): 231000
 Nom Heating Capacity (Btu/hr): 270000
 Heating Input Power (kW): 18.81
 Heating COP (Btu/hr / Btu/hr): 3.8/3.60
 HSPF: N/A
 Heating COP 17F (Btu/hr / Btu/hr): 2.6/2.45

Condensing Unit Type: 18-Ton VRV-III Heat Pump
 Unit Combination: RXYQ120PBTJ RXYQ96PBTJ
 Rated Cooling Conditions: Indoor: 80°F DB/67°F WB
 Outdoor: 95°F DB/75°F WB
 Rated Heating Conditions: Indoor: 70°F DB/60°F WB
 Outdoor: 47°F DB/43°F WB
 Rated Piping Length (ft): 100 / 50
 Rated Height Difference (ft): 0

Condensing Unit Details

Power Supply (V/Hz/Ph): 208-230/60/3ph
 Power Supply Connections: L1, L2, L3 Ground
 Min. Circuit Amps MCA (A): 43+43
 Max. Overcurrent Protection (MOP)(A): 50+50
 Max. Starting Current MSC(A): 158
 Rated Load Amps RLA (A): (10.8+16.8)+(7.8+16.8)
 Dimensions Height (Inch): 66-1/8
 Dimensions Width (Inch): 97-3/4
 Dimensions Depth (Inch): 30-1/8
 Net Weight (lbs): 620+620

Compressor Type: Inverter
 Capacity Control Range (%): 7 - 100
 Capacity Index Limit: 108 - 280.8 (130%)
 Airflow Rate (CFM): 8,230+8,230
 Gas Pipe Connection (inch): 1-1/8
 Liquid Pipe Connection (inch): 5/8
 H/L Pressure Connection (inch):
 H/L Equalizing Connection (inch):
 Sound Pressure Level (dBA): 63
 Sound Power Level (dBA):
 Max. No. of Indoor Units: 37

System Details

Refrigerant Type: R-410A
 Holding Refrigerant Charge (lbs): 22.1+21.4
 Additional Charge (lbs/ft): install data
 Pre-charge Piping (Length ft): -
 Max. Pipe Length (Total ft):
 Max. Pipe Length (Vertical ft): 164 ft (295 ft) / 295 ft
 Max Height Separation (Ind to Ind ft):

Cooling Operation Range (°F): 23 - 110
 Cooling Range w/Baffle (°F):
 Heating Operation Range (°F): 0 - 77 / (-4) - 60
 Heating Range w/Baffle (°F):

Project Name: INN AT DIAMOND ISLAND
 Location:
 Engineer: DAVID CHADWICK
 Submitted to: GRANITE CORP
 Submitted by:
 Reference: INN AT DIAMOND ISLAND

Approval:
 Date: 8/27/2013
 Construction:
 Unit #:
 Drawing #:

Performance

Outdoor Unit Model No: RXYQ240PBTJ
 Type:
 Rated Cooling Capacity (Btu/hr): 228000
 Nom Cooling Capacity (Btu/hr): 264000
 Cooling Input Power (kW): 19.66
 SEER: N/A
 IEER: 18.2/16.1
 Rated Heating Capacity (Btu/hr): 257000
 Nom Heating Capacity (Btu/hr): 297000
 Heating Input Power (kW): 21.52
 Heating COP (Btu/hr / Btu/hr): 3.6/3.5
 HSPF: N/A
 Heating COP 17F (Btu/hr / Btu/hr): 2.55/2.35

Condensing Unit Type: 20-Ton VRV-III Heat Pump
 Unit Combination: RXYQ120PBTJ RXYQ120PBTJ
 Rated Cooling Conditions: Indoor: 80°F DB/67°F WB
 Outdoor: 95°F DB/75°F WB
 Rated Heating Conditions: Indoor: 70°F DB/60°F WB
 Outdoor: 47°F DB/43°F WB
 Rated Piping Length (ft): 100 / 50
 Rated Height Difference (ft): 0

Condensing Unit Details

Power Supply (V/Hz/Ph): 208-230/60/3ph
 Power Supply Connections: L1, L2, L3 Ground
 Min. Circuit Amps MCA (A): 43+43
 Max. Overcurrent Protection (MOP)(A): 50+50
 Max. Starting Current MSC(A): 159
 Rated Load Amps RLA (A): (10.8+16.8) x 2
 Dimensions Height (Inch): 66-1/8
 Dimensions Width (Inch): 97-3/4
 Dimensions Depth (Inch): 30-1/8
 Net Weight (lbs): 620+620

Compressor Type: Inverter
 Capacity Control Range (%): 6 - 100
 Capacity Index Limit: 120 - 312 (130%)
 Airflow Rate (CFM): 8,230+8,230
 Gas Pipe Connection (inch): 1-3/8
 Liquid Pipe Connection (inch): 5/8
 H/L Pressure Connection (inch):
 H/L Equalizing Connection (inch):
 Sound Pressure Level (dBA): 63
 Sound Power Level (dBA):
 Max. No. of Indoor Units: 41

System Details

Refrigerant Type: R-410A
 Holding Refrigerant Charge (lbs): 22.1+22.1
 Additional Charge (lbs/ft): install data
 Pre-charge Piping (Length ft): -
 Max. Pipe Length (Total ft):
 Max. Pipe Length (Vertical ft): 164 ft (295 ft) / 295 ft
 Max Height Separation (Ind to Ind ft):

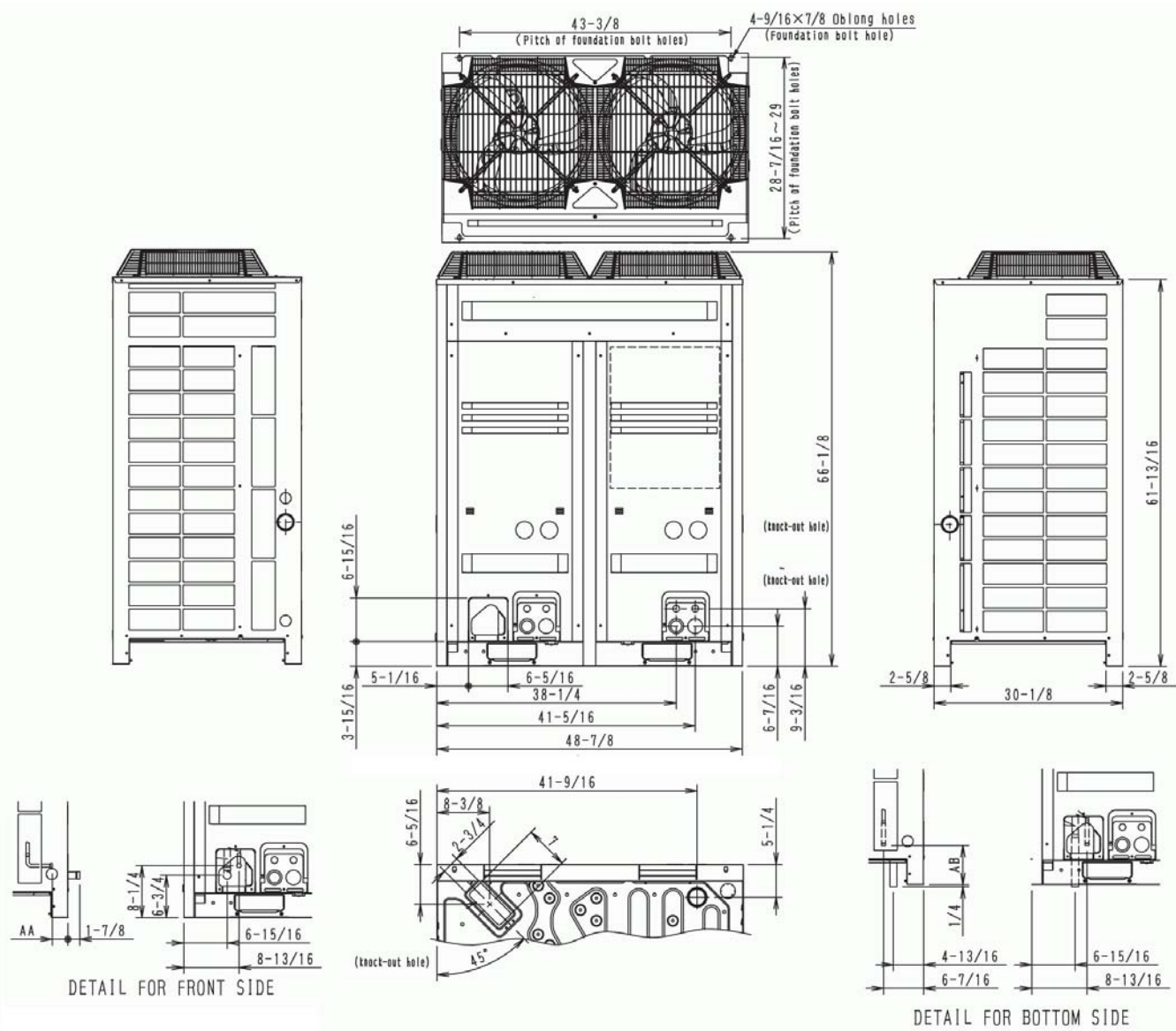
Cooling Operation Range (°F): 23 - 110
 Cooling Range w/Baffle (°F):
 Heating Operation Range (°F): 0 - 77 / (-4) - 60
 Heating Range w/Baffle (°F):

Project Name: _____
 Location: _____
 Engineer: _____
 Submitted to: _____
 Submitted by: _____
 Reference: _____

Approval: _____
 Date: _____
 Construction: _____
 Unit #: _____
 Drawing #: _____

Dimensional Drawing - Condensing Unit

RXYQ120PBTJ

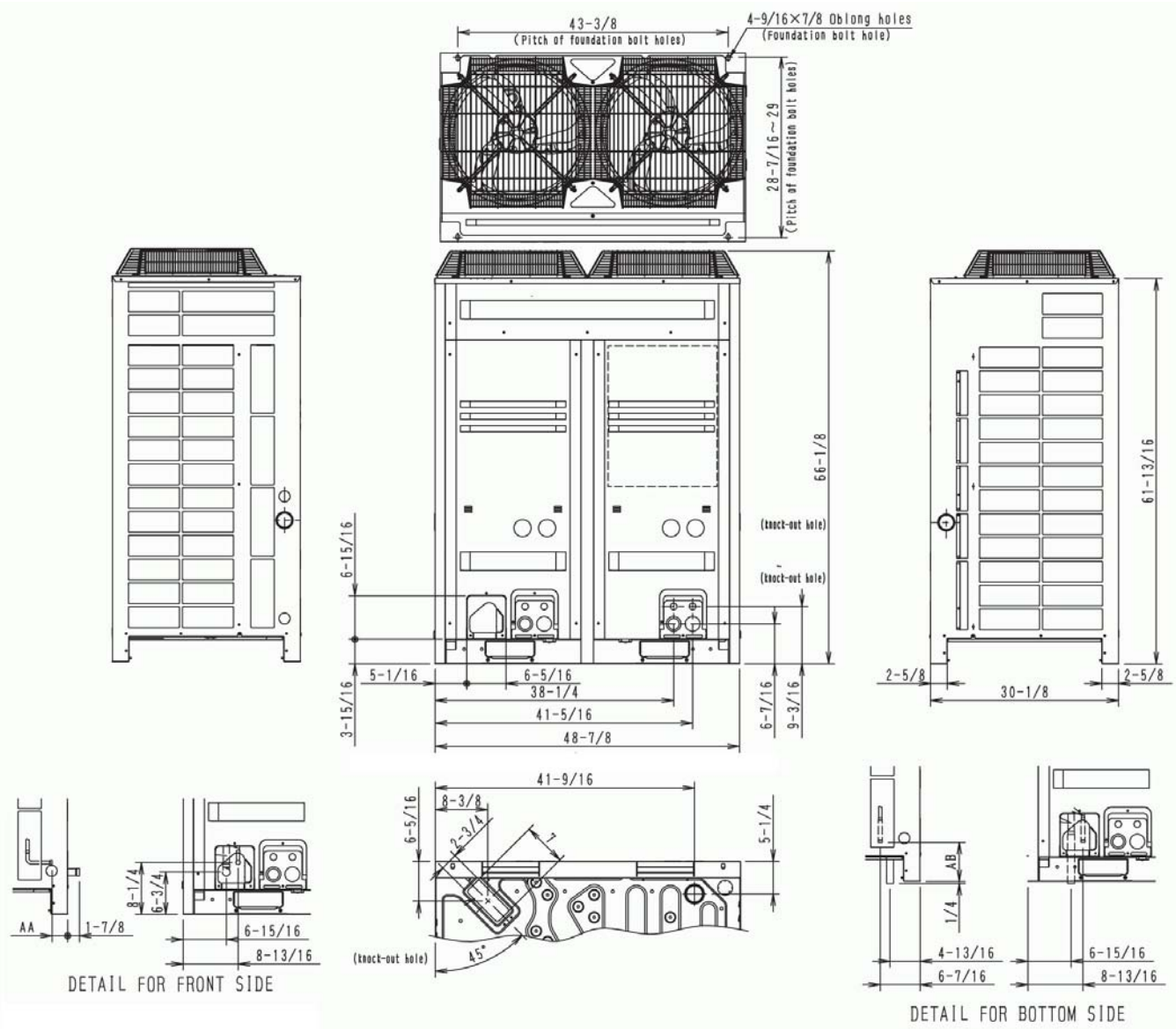


Project Name: _____
 Location: _____
 Engineer: _____
 Submitted to: _____
 Submitted by: _____
 Reference: _____

Approval: _____
 Date: _____
 Construction: _____
 Unit #: _____
 Drawing #: _____

Dimensional Drawing - Condensing Unit

RXYQ96PBTJ

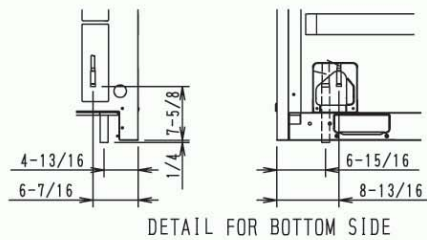
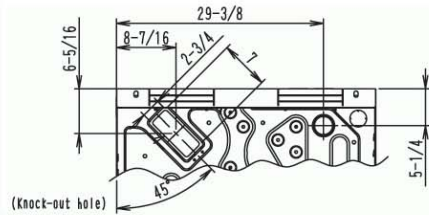
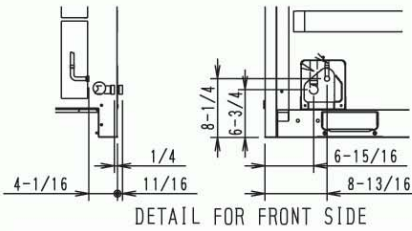
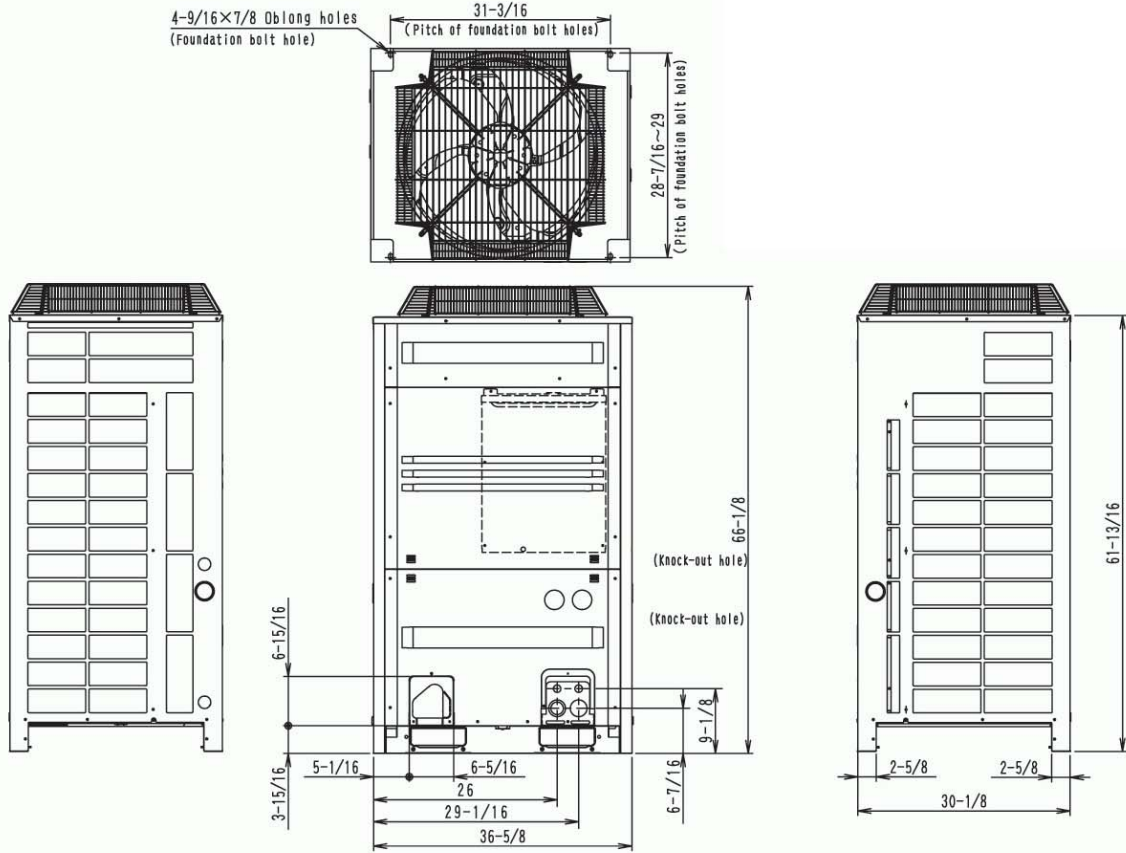


Project Name: _____
 Location: _____
 Engineer: _____
 Submitted to: _____
 Submitted by: _____
 Reference: _____

Approval: _____
 Date: _____
 Construction: _____
 Unit #: _____
 Drawing #: _____

Dimensional Drawing - Condensing Unit

RXYQ72PBTJ



Project Name: INN AT DIAMOND ISLAND
 Location:
 Engineer: DAVID CHADWICK
 Submitted to: GRANITE CORP
 Submitted by:
 Reference: INN AT DIAMOND ISLAND

Approval:
 Date: 8/27/2013
 Construction:
 Unit #:
 Drawing #:

Performance

Indoor Unit Model No: FXAQ07PVJU
 Rated Cooling Capacity (Btu/hr): 7500
 Sensible Capacity (Btu/hr): 6400
 Cooling Input Power (kW): 0.019
 Rated Heating Capacity (Btu/hr): 8500
 Heating Input Power (kW): 0.029

Indoor Unit Type: Wall Mounted
 Rated Cooling Conditions Indoor: 80°F DB/67°F WB
 Ambient: 95°F DB/75°F WB
 Rated Heating Conditions Indoor: 70°F DB/60°F WB
 Ambient: 47°F DB/43°F WB
 Rated Piping Length (ft) 25
 Rated Height Separation (ft) 0

Indoor Unit Details

Power Supply (V/Hz/Ph): 208-230/60/1ph
 Power Supply Connections: L1, L2, Ground
 Min. Circuit Amps MCA (A): 0.4
 Max. Overcurrent Protection (MOP) (A): 15
 Dimensions (HxWxD): 11-3/8x31-1/4x9-1/4
 Panel (HxWxD): N/A
 Net Weight (lbs): 26
 Net Weight with Panel (lbs):

Airflow Rate (CFM wet coil) 260//160
 Moisture Removal (pt/h):
 Gas Pipe Connection (inch): 1/2
 Liquid Pipe Connection (inch): 1/4
 Condensate Connection (inch): 11/16
 Sound Pressure Level (dBA): 36
 Sound Power Level (dBA):
 External Static Pressure/Max (inWg): 0 / 0
 Controller Name:

FXAQ07PVJU

FXAQ07PVJU

Std U.S. Warranty: 7yrs Compressor, 1yrs Parts

Project Name: INN AT DIAMOND ISLAND
 Location:
 Engineer: DAVID CHADWICK
 Submitted to: GRANITE CORP
 Submitted by:
 Reference: INN AT DIAMOND ISLAND

Approval:
 Date: 8/27/2013
 Construction:
 Unit #:
 Drawing #:

Performance

Indoor Unit Model No: FXAQ09PVJU
 Rated Cooling Capacity (Btu/hr): 9500
 Sensible Capacity (Btu/hr): 7300
 Cooling Input Power (kW): 0.028
 Rated Heating Capacity (Btu/hr): 10500
 Heating Input Power (kW): 0.034

Indoor Unit Type: Wall Mounted
 Rated Cooling Conditions Indoor: 80°F DB/67°F WB
 Ambient: 95°F DB/75°F WB
 Rated Heating Conditions Indoor: 70°F DB/60°F WB
 Ambient: 47°F DB/43°F WB
 Rated Piping Length (ft) 25
 Rated Height Separation (ft) 0

Indoor Unit Details

Power Supply (V/Hz/Ph): 208-230/60/1ph
 Power Supply Connections: L1, L2, Ground
 Min. Circuit Amps MCA (A): 0.4
 Max. Overcurrent Protection (MOP) (A): 15
 Dimensions (HxWxD): 11-3/8x31-1/4x9-1/4
 Panel (HxWxD): N/A
 Net Weight (lbs): 26
 Net Weight with Panel (lbs):

Airflow Rate (CFM wet coil) 280//175
 Moisture Removal (pt/h):
 Gas Pipe Connection (inch): 1/2
 Liquid Pipe Connection (inch): 1/4
 Condensate Connection (inch): 11/16
 Sound Pressure Level (dBA): 37
 Sound Power Level (dBA):
 External Static Pressure/Max (inWg): 0 / 0
 Controller Name:

FXAQ09PVJU

FXAQ09PVJU

Std U.S. Warranty: 7yrs Compressor, 1yrs Parts

Project Name: INN AT DIAMOND ISLAND
 Location:
 Engineer: DAVID CHADWICK
 Submitted to: GRANITE CORP
 Submitted by:
 Reference: INN AT DIAMOND ISLAND

Approval:
 Date: 8/27/2013
 Construction:
 Unit #:
 Drawing #:

Performance

Indoor Unit Model No: FXAQ12PVJU
 Rated Cooling Capacity (Btu/hr): 12000
 Sensible Capacity (Btu/hr): 8900
 Cooling Input Power (kW): 0.03
 Rated Heating Capacity (Btu/hr): 13500
 Heating Input Power (kW): 0.035

Indoor Unit Type: Wall Mounted
 Rated Cooling Conditions Indoor: 80°F DB/67°F WB
 Ambient: 95°F DB/75°F WB
 Rated Heating Conditions Indoor: 70°F DB/60°F WB
 Ambient: 47°F DB/43°F WB
 Rated Piping Length (ft) 25
 Rated Height Separation (ft) 0

Indoor Unit Details

Power Supply (V/Hz/Ph): 208-230/60/1ph
 Power Supply Connections: L1, L2, Ground
 Min. Circuit Amps MCA (A): 0.4
 Max. Overcurrent Protection (MOP) (A): 15
 Dimensions (HxWxD): 11-3/8x31-1/4x9-1/4
 Panel (HxWxD): N/A
 Net Weight (lbs): 26
 Net Weight with Panel (lbs):

Airflow Rate (CFM wet coil) 290//180
 Moisture Removal (pt/h):
 Gas Pipe Connection (inch): 1/2
 Liquid Pipe Connection (inch): 1/4
 Condensate Connection (inch): 11/16
 Sound Pressure Level (dBA): 38
 Sound Power Level (dBA):
 External Static Pressure/Max (inWg): 0 / 0
 Controller Name:

FXAQ12PVJU

FXAQ12PVJU

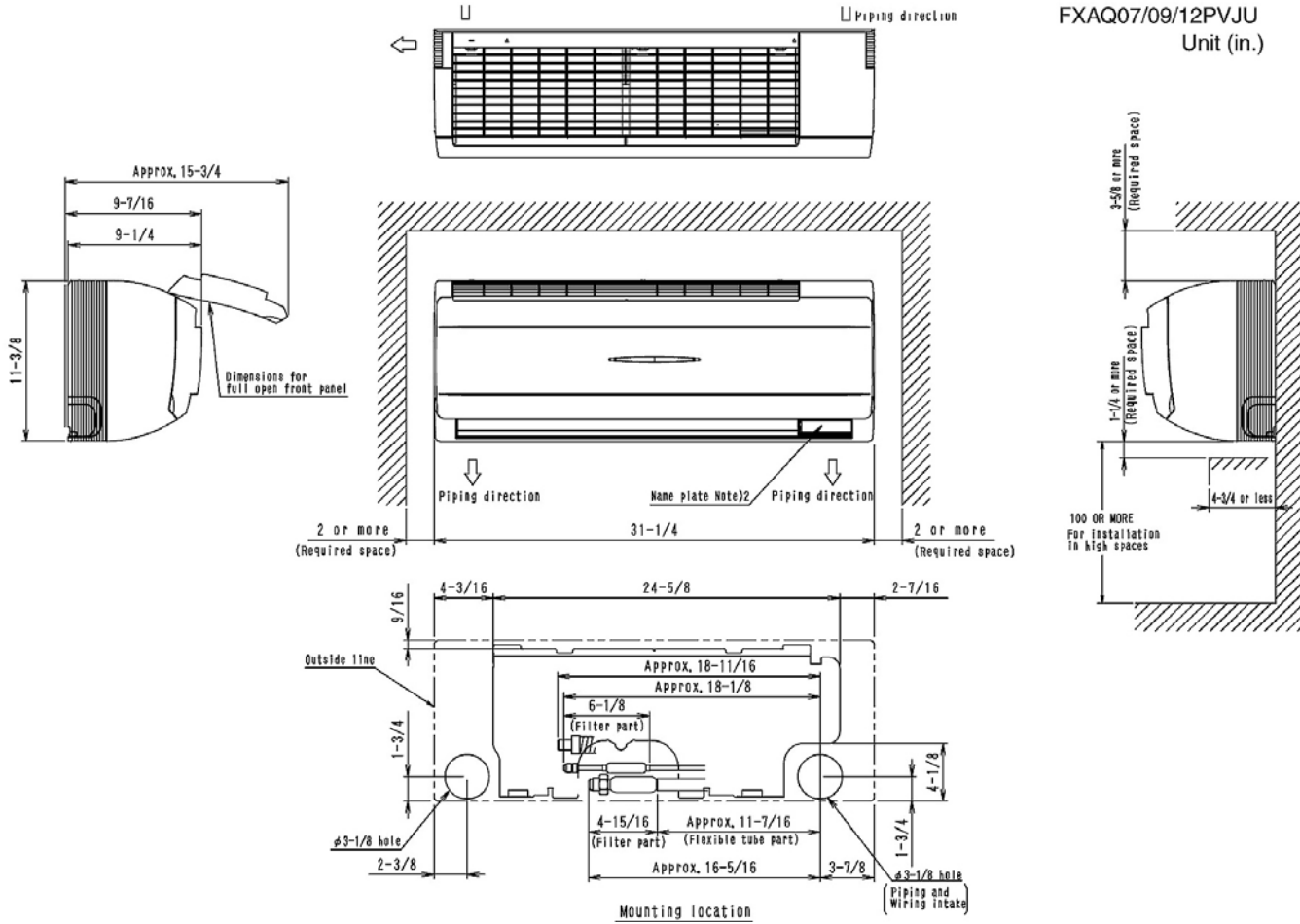
Std U.S. Warranty: 7yrs Compressor, 1yrs Parts

Project Name: _____
 Location: _____
 Engineer: _____
 Submitted to: _____
 Submitted by: _____
 Reference: _____

Approval: _____
 Date: _____
 Construction: _____
 Unit #: _____
 Drawing #: _____

Dimensional Drawing - Indoor Unit

FXAQ09PVJU



FXAQ07/09/12PVJU
Unit (in.)

