



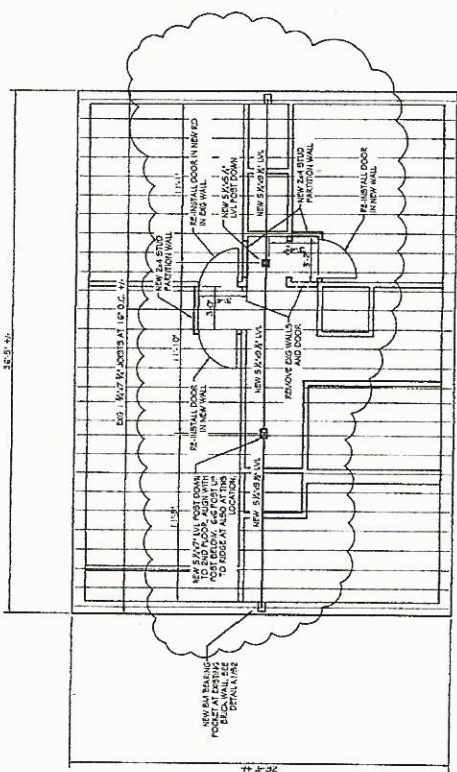
ASSOCIATED DESIGN PARTNERS INC.
 90 Leighton Road
 Portland, Maine 04108
 Tel: (207) 878-1751
 Fax: (207) 878-1752
 www.associateddesign.com

THESE PLANS HAVE BEEN PREPARED BY AN ARCHITECT OR ARCHITECTURAL FIRM, AND THE ARCHITECT OR ARCHITECTURAL FIRM IS NOT PROVIDING CONTRACT ADMINISTRATION SERVICES.

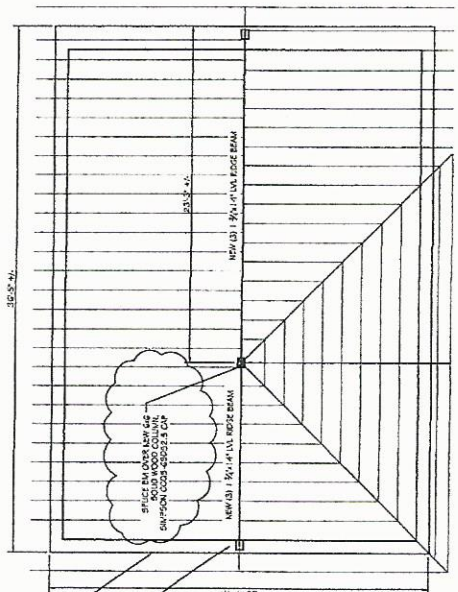
PROJECT: **16F MCKINLEY CT**
 GREAT DIAMOND ISL, PORTLAND, ME
 SHEET TITLE: **STRUCTURAL PLANS**
 ISSUED FOR PERMITTING

NO.	BY	DESCRIPTION	DATE
1	AS	ISSUED FOR PERMITTING	05-15-18

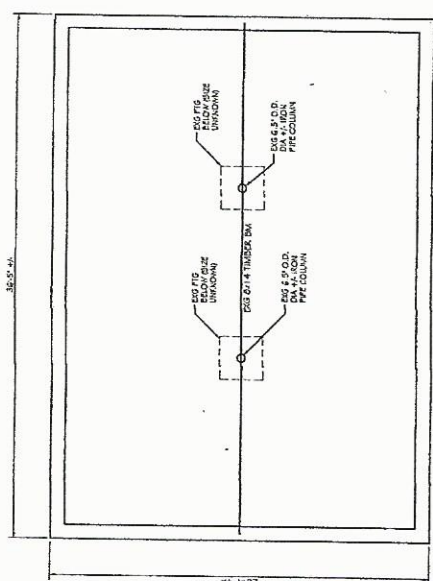
SCALE: 1/8" = 1'-0"
 DRAWN BY: ASW
 CHECKED BY: JES
 PROJECT NUMBER: **16133**
 SHEET NO: **S1**



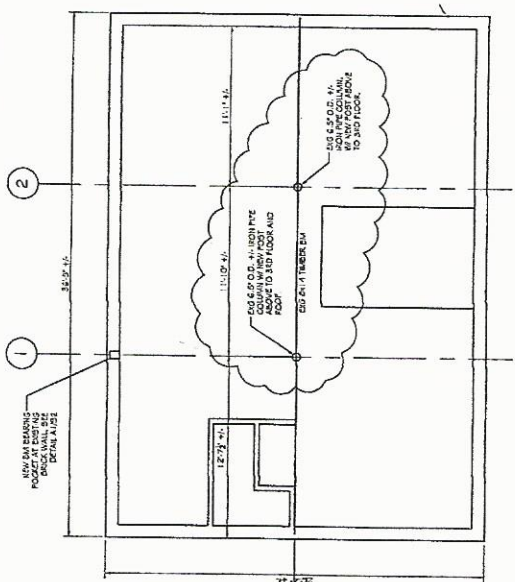
B1 PARTIAL 3RD FLOOR FRAMING PLAN
 SCALE: 1/8" = 1'-0"



A1 PARTIAL ROOF FRAMING PLAN
 SCALE: 1/8" = 1'-0"



B2 PARTIAL 1ST FLOOR FRAMING PLAN W/ FOUNDATION
 SCALE: 1/8" = 1'-0"



A2 PARTIAL 2ND FLOOR FRAMING PLAN
 SCALE: 1/8" = 1'-0"