

These drawings convey design intent only and should not be relied upon for building purposes unless stamped "for construction". See cover sheet for legal disclaimer and additional info. These drawings shall not be reproduced without written permission from Fine Lines Construction, Inc.
© COPYRIGHT 2012 FINE LINES CONSTRUCTION, INC.

Renovations to the
COOPER RESIDENCE
44 McKinley Court - Diamond Cove,
Great Diamond Island, ME 04109

Sheet Title:
BASEMENT ELECTRICAL PLAN

Issue Status:
PERMIT SET
OCTOBER 6, 2014
REV:

Drawing
E1-01

KEY SEE LIGHTING SCHEDULE FOR MORE INFORMATION	
	RECESSED CEILING FIXTURE
	SURFACE MOUNT CEILING FIXTURE
	PENDANT FIXTURE
	WALL SCONCE
	POST LIGHT
	CABLE TRACK LIGHTING
	FLUORESCENT TUBE LIGHT
	12V LINEAR LED W/ REMOTE TRANSFORMER, 2200K
	MONOPOINT LIGHT
	EXTERIOR FLOOD LIGHT
	DENOTES EXISTING FIXTURE
	EXTERIOR RECESSED FLOOR FIXTURE
	RECESSED CEILING FIXTURE (EXTERIOR)
	WALL SWITCH
	3-WAY WALL SWITCH
	FAN SWITCH
	DUPLEX RECEPTACLE
	220-VOLT RECEPTACLE
	GFI RECEPTACLE
	DUPLEX FLOOR RECEPTACLE
	DATA AND/OR TV
	FANLIGHT COMBO FIXTURE
	THERMOSTAT
	RECESSED CEILING SPEAKER

NOTES:

TOP OF ALL SWITCHES TO BE MOUNTED AT 48" AFF UNLESS OTHERWISE NOTED.

RECESSED LIGHTS TO BE ELITE 4" LOW VOLTAGE SERIES, WHITE.

ALL EXPOSED CONDUIT TO BE GALVANIZED RIGID CONDUIT, BOXES TO MATCH.

SMOKE DETECTORS/CO PER SECURITY SYSTEM SPECIFICATIONS.

ALL LIGHTING CIRCUITS TO BE ON DIMMERS.

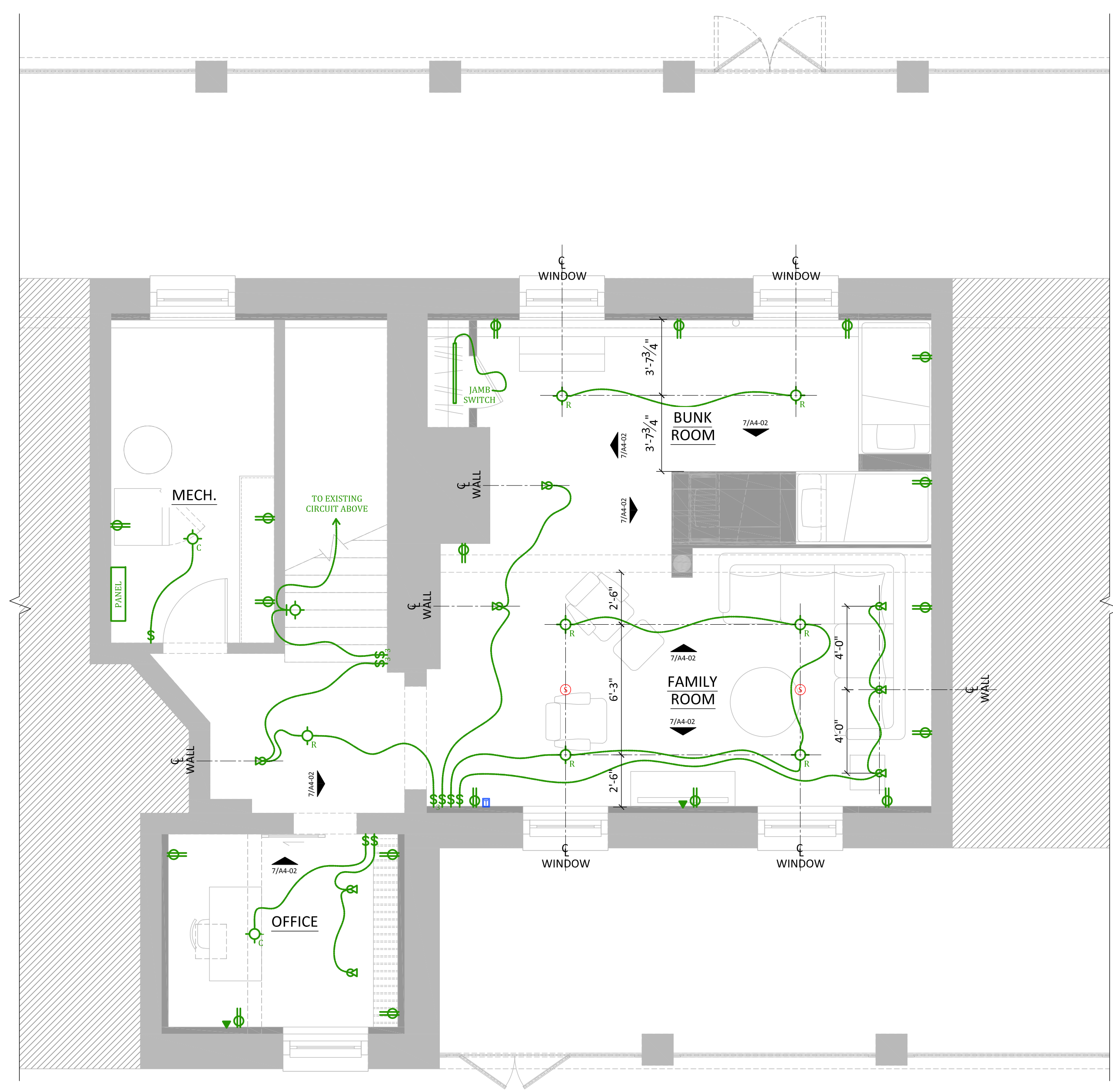
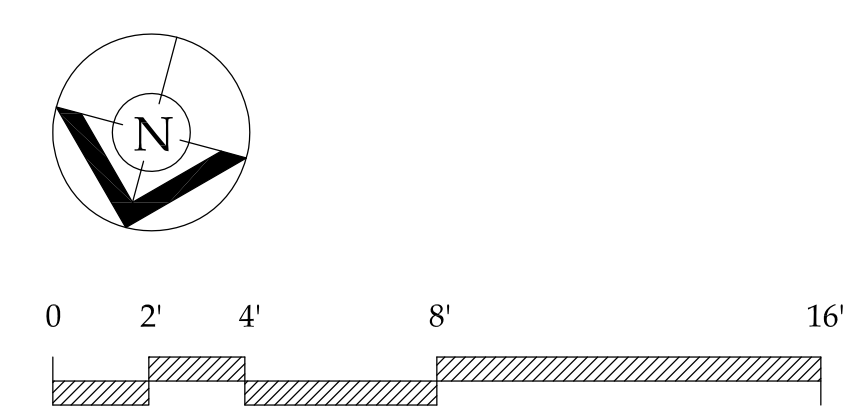
CONVENTIONAL JAMB SWITCHES AT ALL CLOSETS

NO MORE THAN 4 SWITCHES GANGED IN ONE BOX. IF MORE THAN 4 SWITCHES ARE REQUIRED, STACK 2 BOXES ABOVE ONE ANOTHER WITH EQUAL NUMBER OF SWITCHES IN EACH BOX. USE DUMMY SWITCH IF NECESSARY.

MAINTAIN EXISTING OUTLETS UNLESS OTHERWISE NOTED. OUTLETS TO CODE AS REQ'D.

REPLACE ALL EXISTING SWITCH PLATES TO MATCH NEW.

SPEAKERS TO BE WIRED W/ 16/4 CL2 IN-WALL SPEAKER WIRE, TYP.



1 BASEMENT ELECTRICAL PLAN
1/4" = 1'-0"