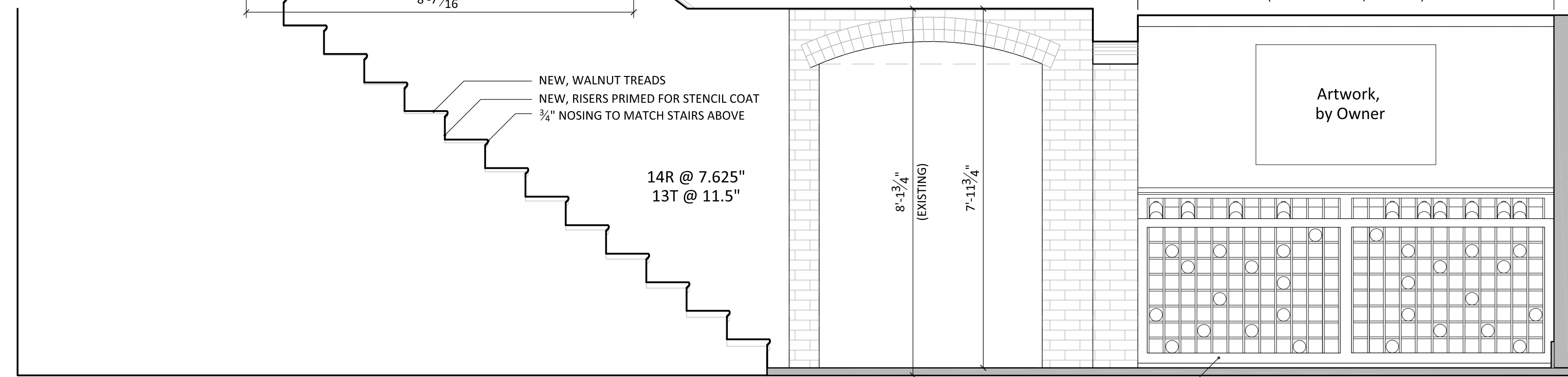
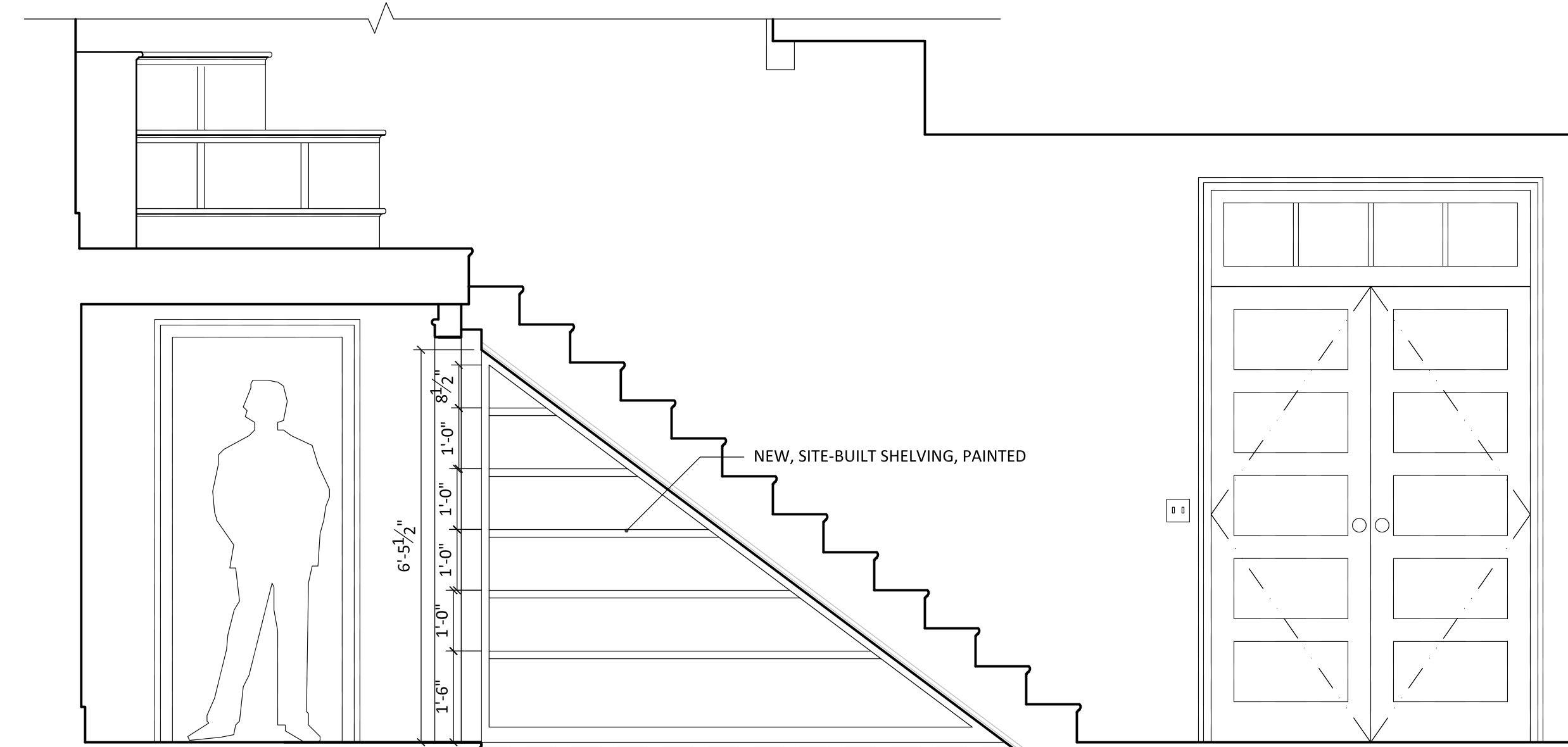
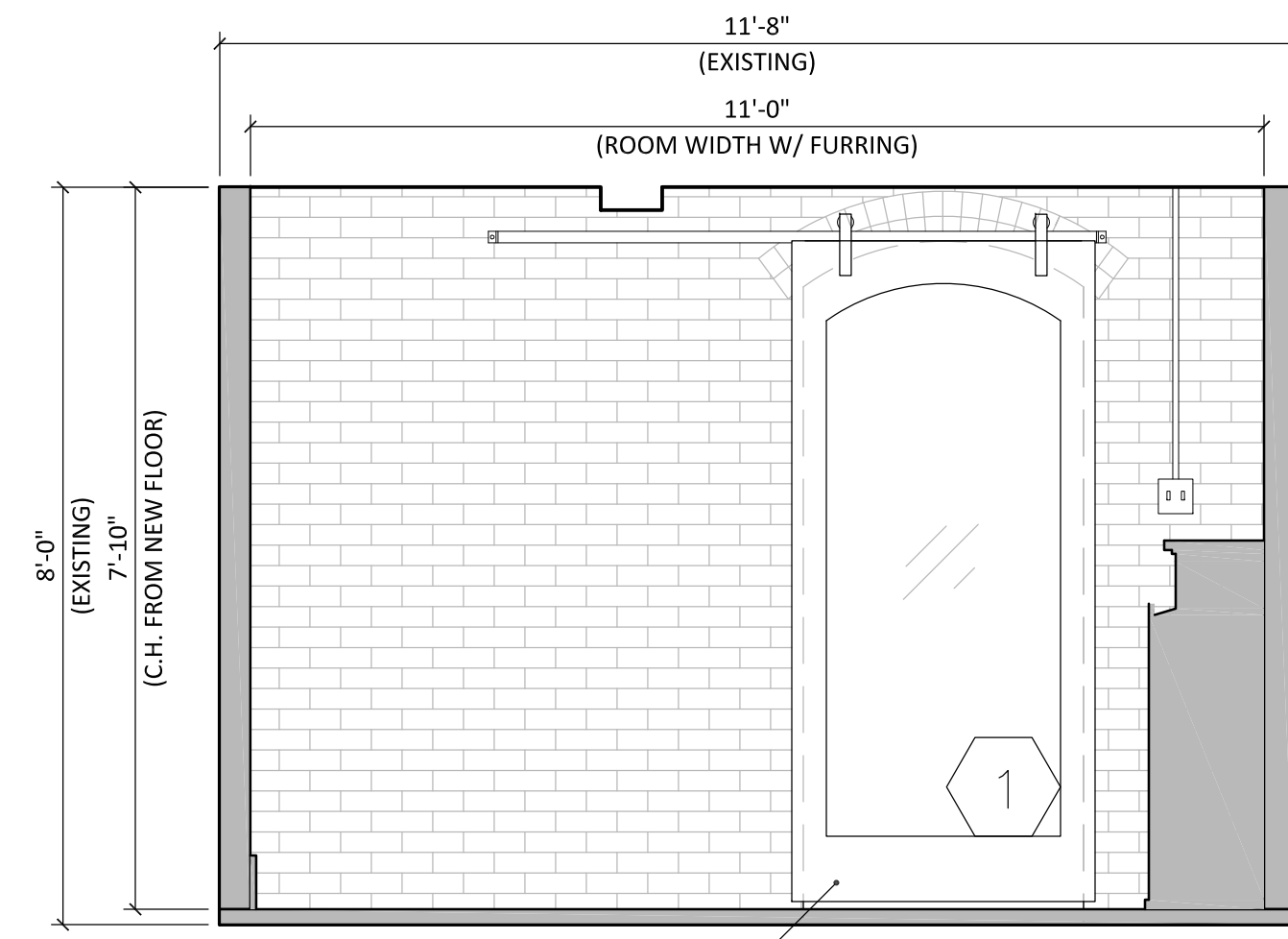


These drawings convey design intent only and should not be relied upon for building purposes unless stamped "for construction". See cover sheet for legal disclaimer and additional info. These drawings shall not be reproduced without written permission from Fine Lines Construction, Inc.

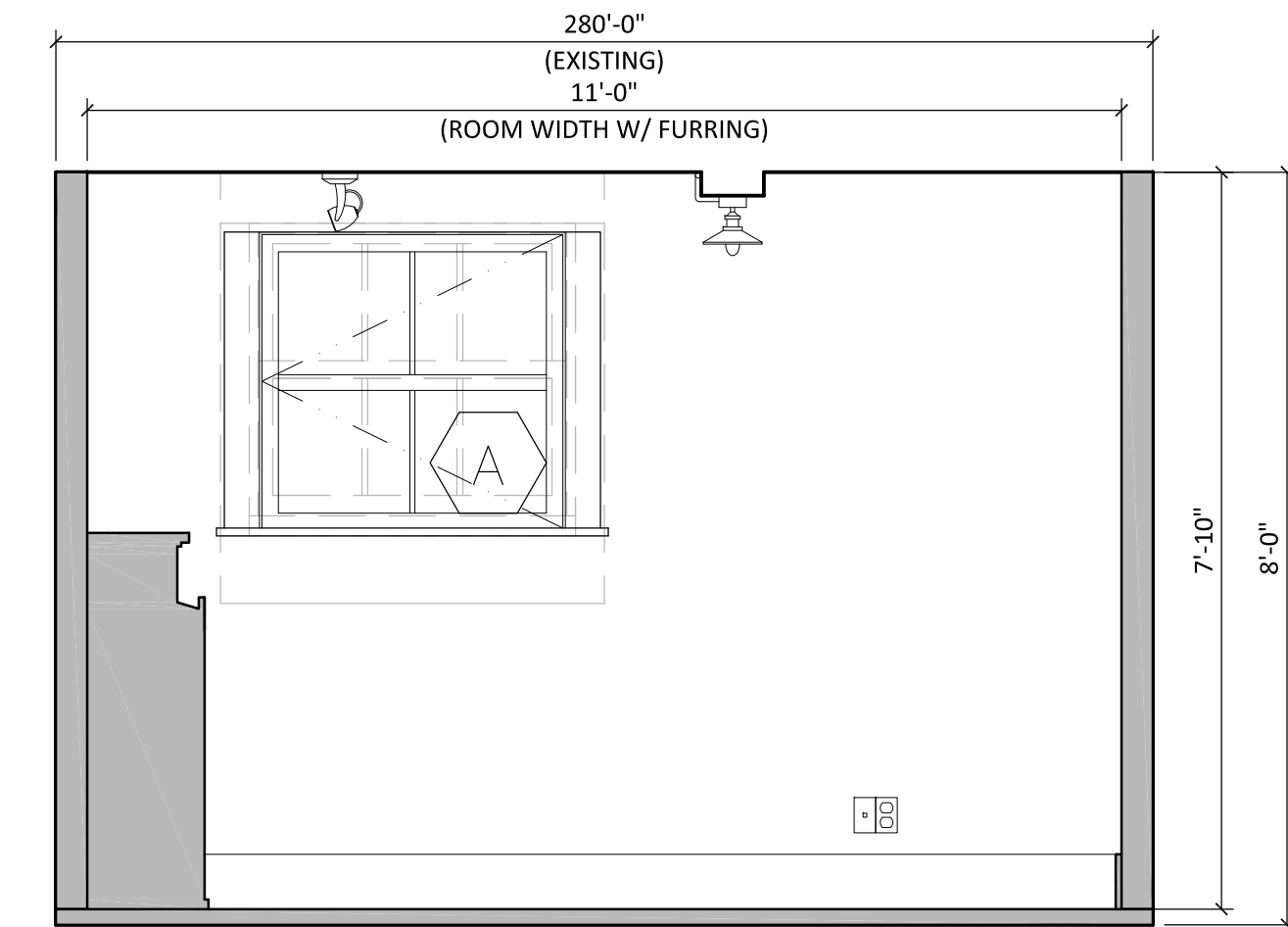
© COPYRIGHT 2012 FINE LINES CONSTRUCTION, INC.



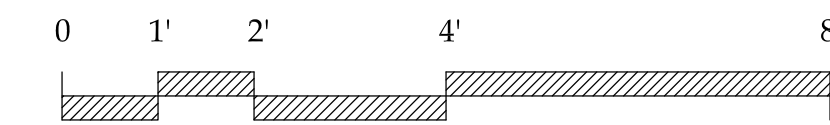
**2 STORAGE 2/STAIR - WEST**  
1/2" = 1'-0"



**3 STORAGE 2 - SOUTH**  
1/2" = 1'-0"



**1 STORAGE 2 - NORTH**  
1/2" = 1'-0"



**Renovations to the  
COOPER RESIDENCE**

44 McKinley Court - Diamond Cove,  
Great Diamond Island, ME 04109

**BASEMENT INTERIOR  
ELEVATIONS**

Sheet Title:

PERMIT SET

OCTOBER 6, 2014  
REV:

Issue Status:

Drawing

**A4-02**