

These drawings convey design intent only building purposes unless stamped for construction. See cover sheet for legal disclaimer and additional information. These drawings are not to be reproduced without written permission from Fine Lines Construction, Inc.
© COPYRIGHT 2012 FINE LINES CONSTRUCTION, INC.

Renovations to the COOPER RESIDENCE

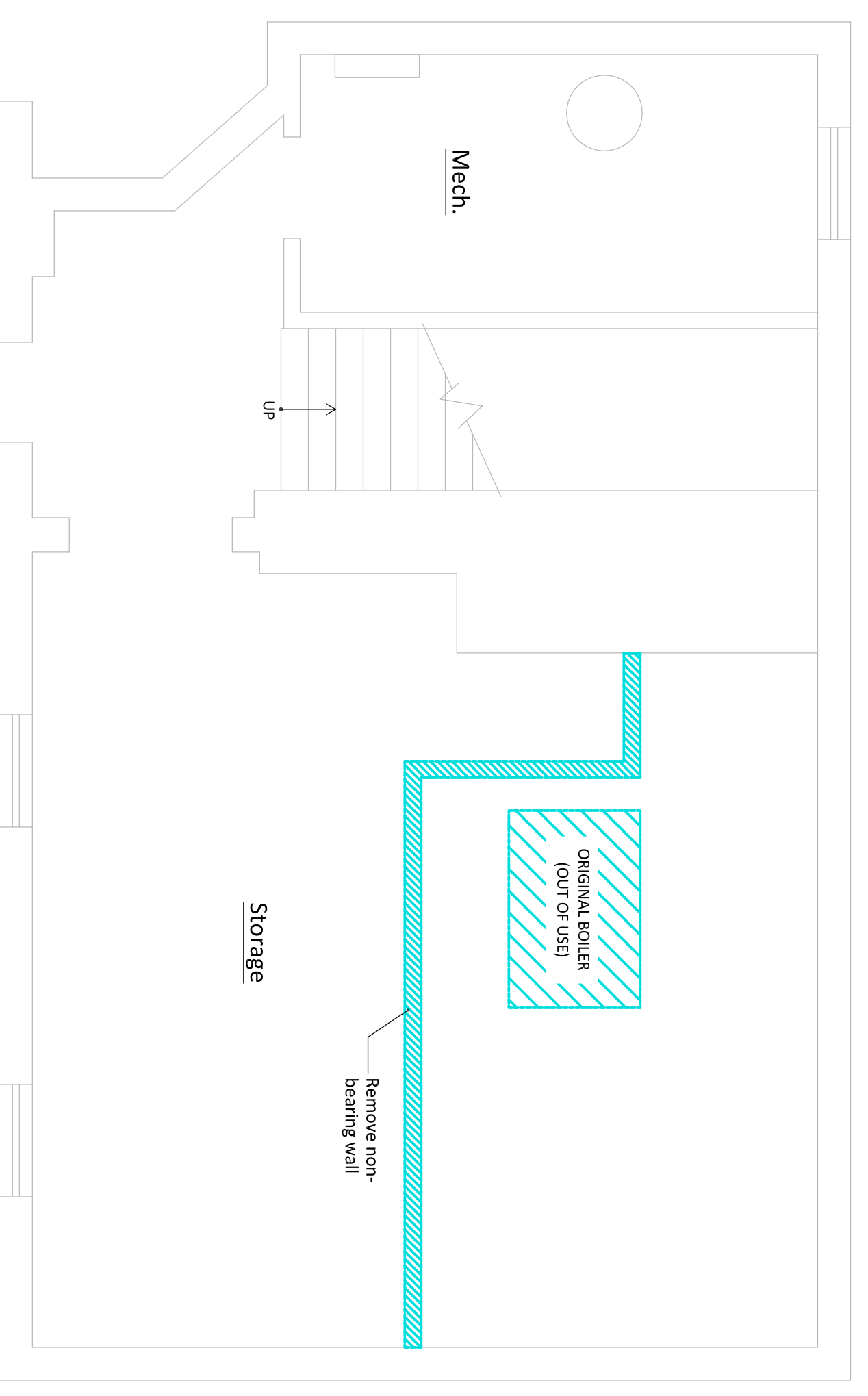
44 McKinley Court - Diamond Cove,
Great Diamond Island, ME 04109

DEMOLITION PLAN

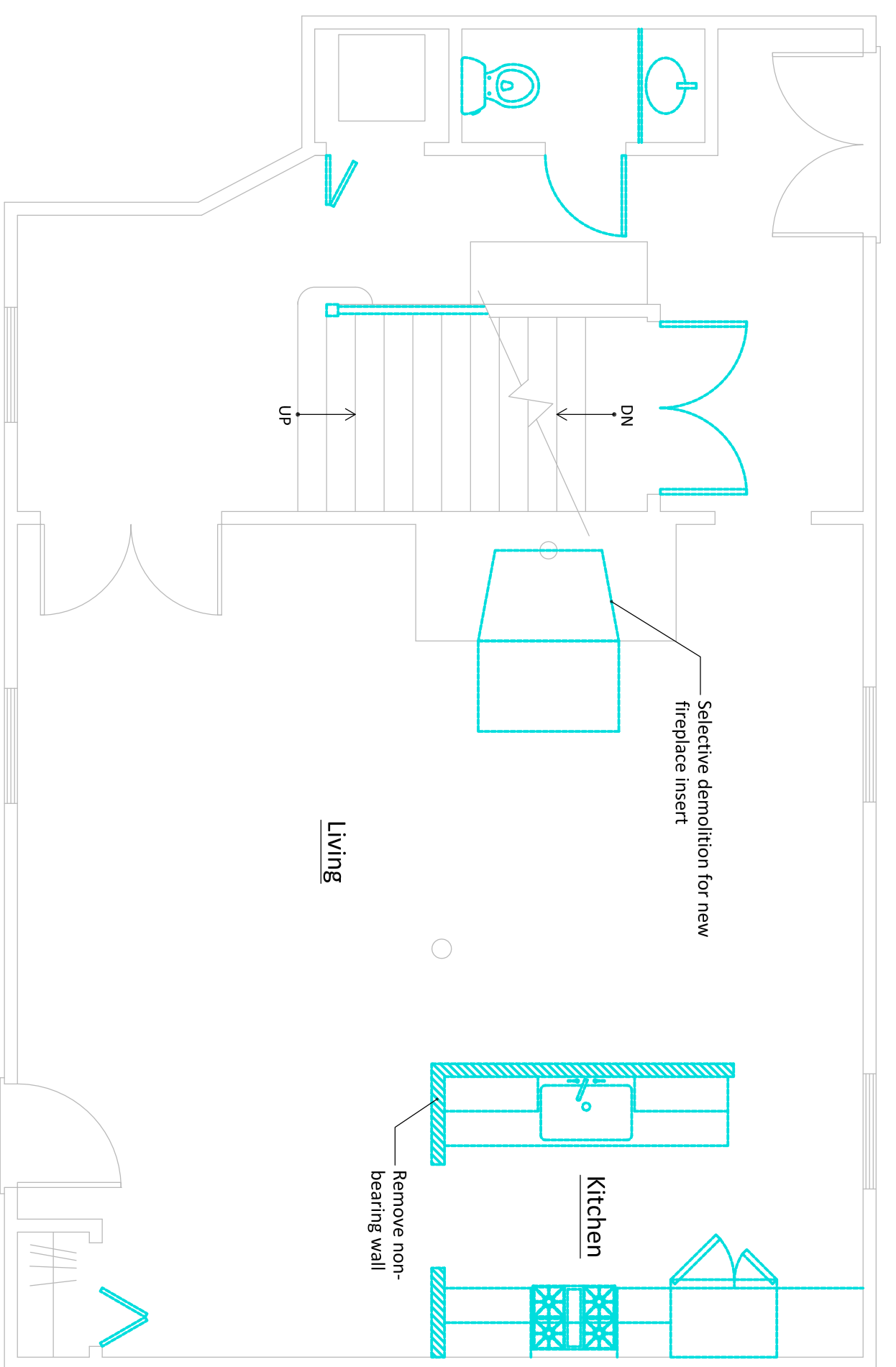
Issue Status:
PERMIT SET
JULY 30, 2013

Drawing
D1-01

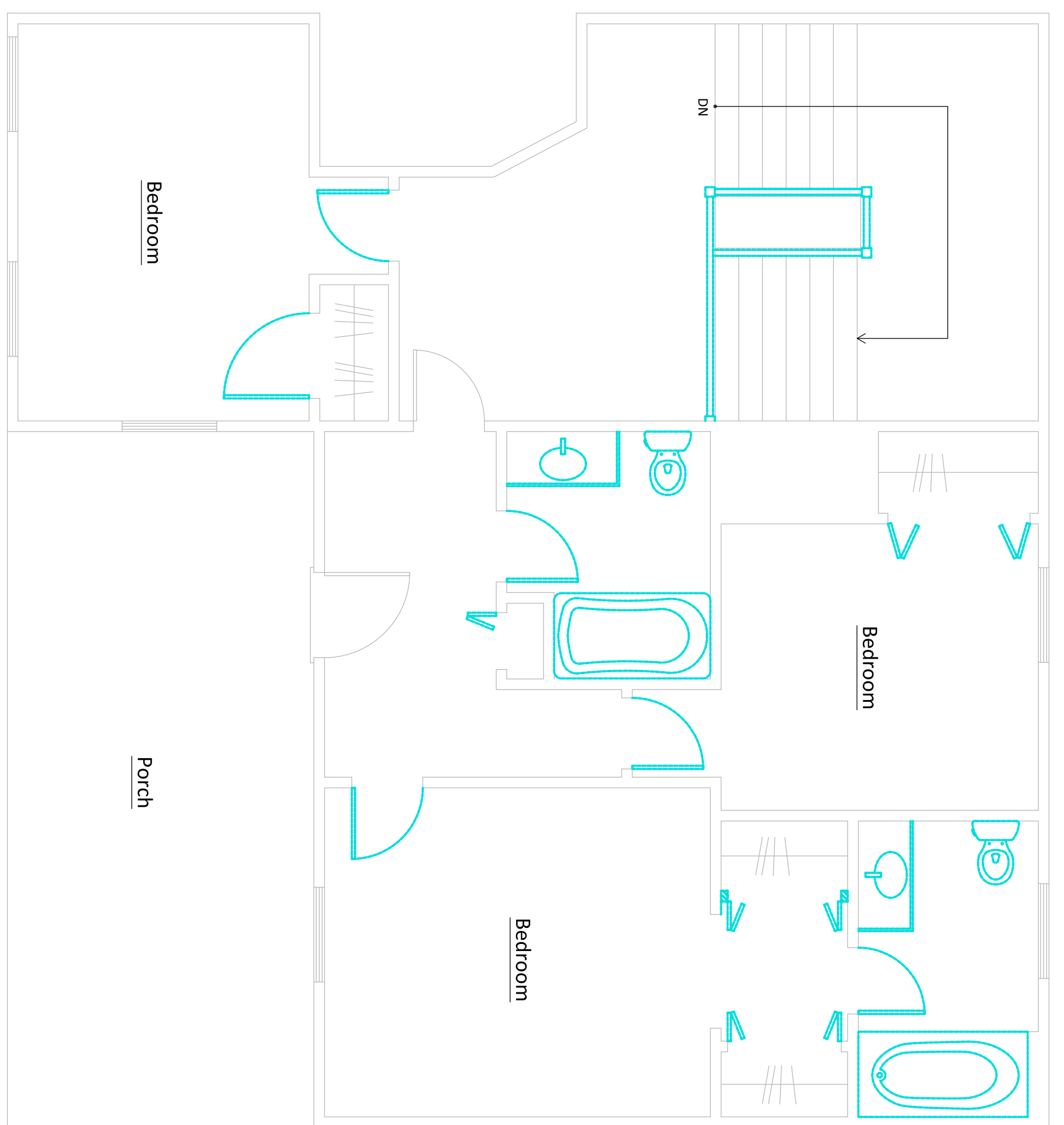
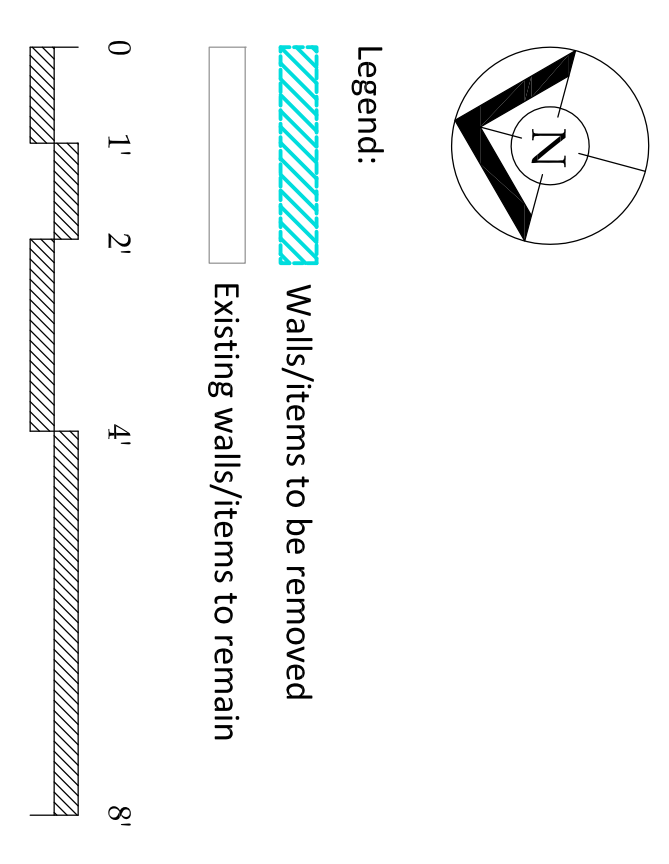
Sheet 2 of 12



1
BASEMENT FLOOR PLAN
3/4" = 1'-0"



2
FIRST FLOOR PLAN
3/4" = 1'-0"



3
SECOND FLOOR PLAN
3/4" = 1'-0"