

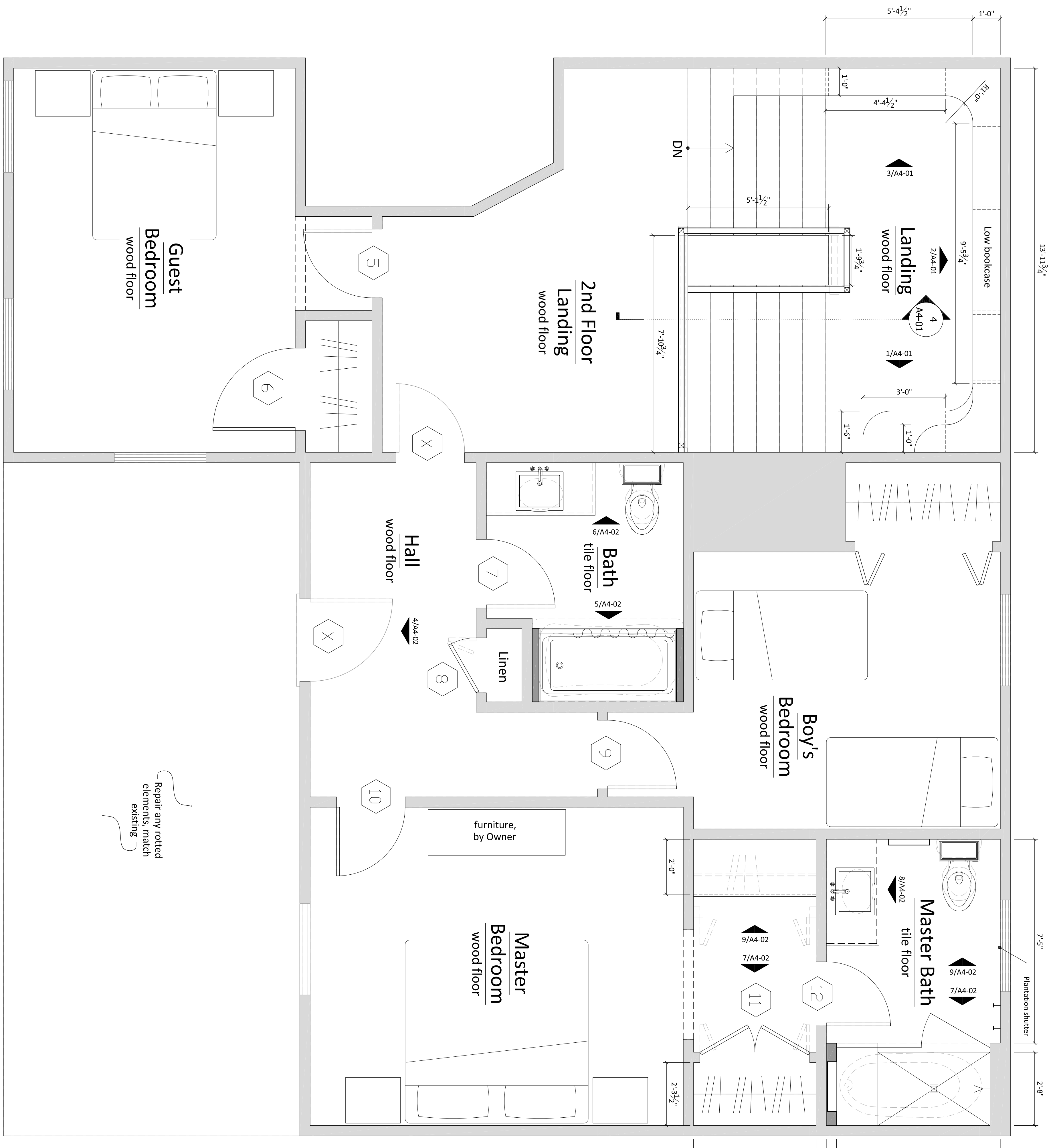
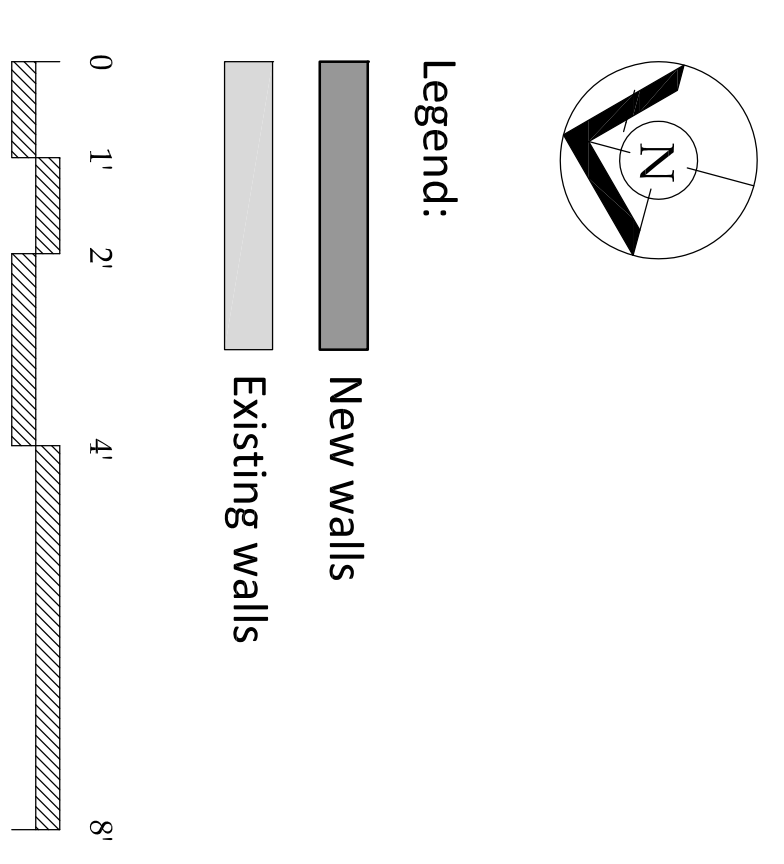
These drawings convey design intent only and should not be relied upon for construction. See cover sheet for legal disclaimer and additional info. These drawings are provided without written permission from Fine Lines Construction, Inc.
© COPYRIGHT 2013 FINE LINES CONSTRUCTION, INC.

Renovations to the COOPER RESIDENCE

44 McKinley Court - Diamond Cove,
Great Diamond Island, ME 04109

SECOND FLOOR PLAN

Issue Status:	PERMIT SET
	JULY 30, 2013



1 SECOND FLOOR PLAN
1/2" = 1'-0"