

ATES"

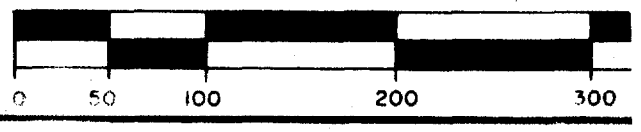
OPEN SP RECREATION
7,592 SF +-
TIE COURSE

DIAMOND COVE

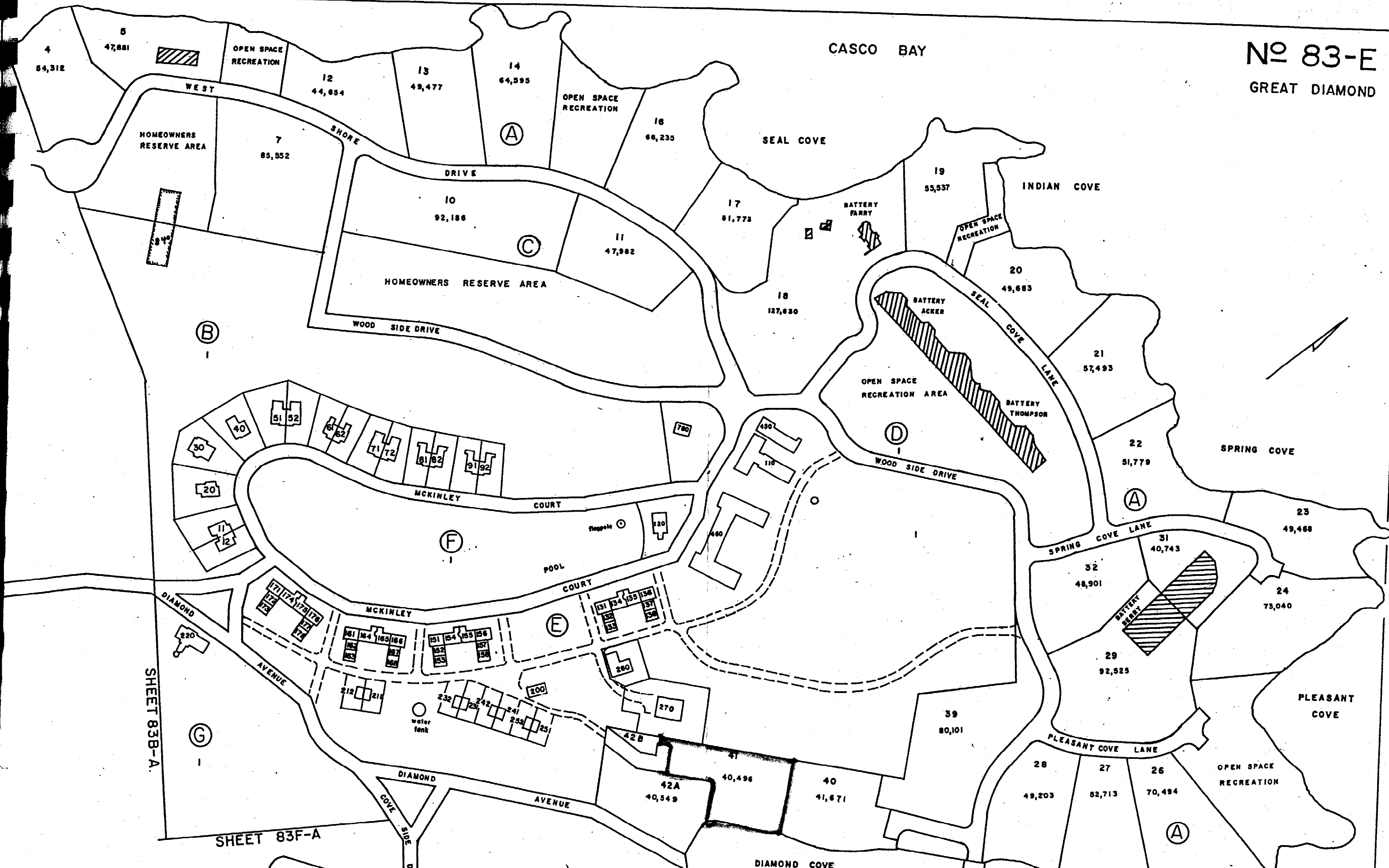
MATCHLINE SEE SHT. 1 FOR CONTINUATION

from sheet 1023

GRAPHIC SCALE



No 83-E
GREAT DIAMOND



SHEET 83B-A

SHEET 83F-A

DIAMOND COVE

© 2000 THE ARCHITECTS

Nathan Residence

Diamond Cove, Great Diamond Island
Portland, Maine

THE ARCHITECTS
100 COMMERCIAL STREET
PORTLAND, MAINE 04101
TEL: 603.779.7700
WWW.THEARCHITECTS.COM

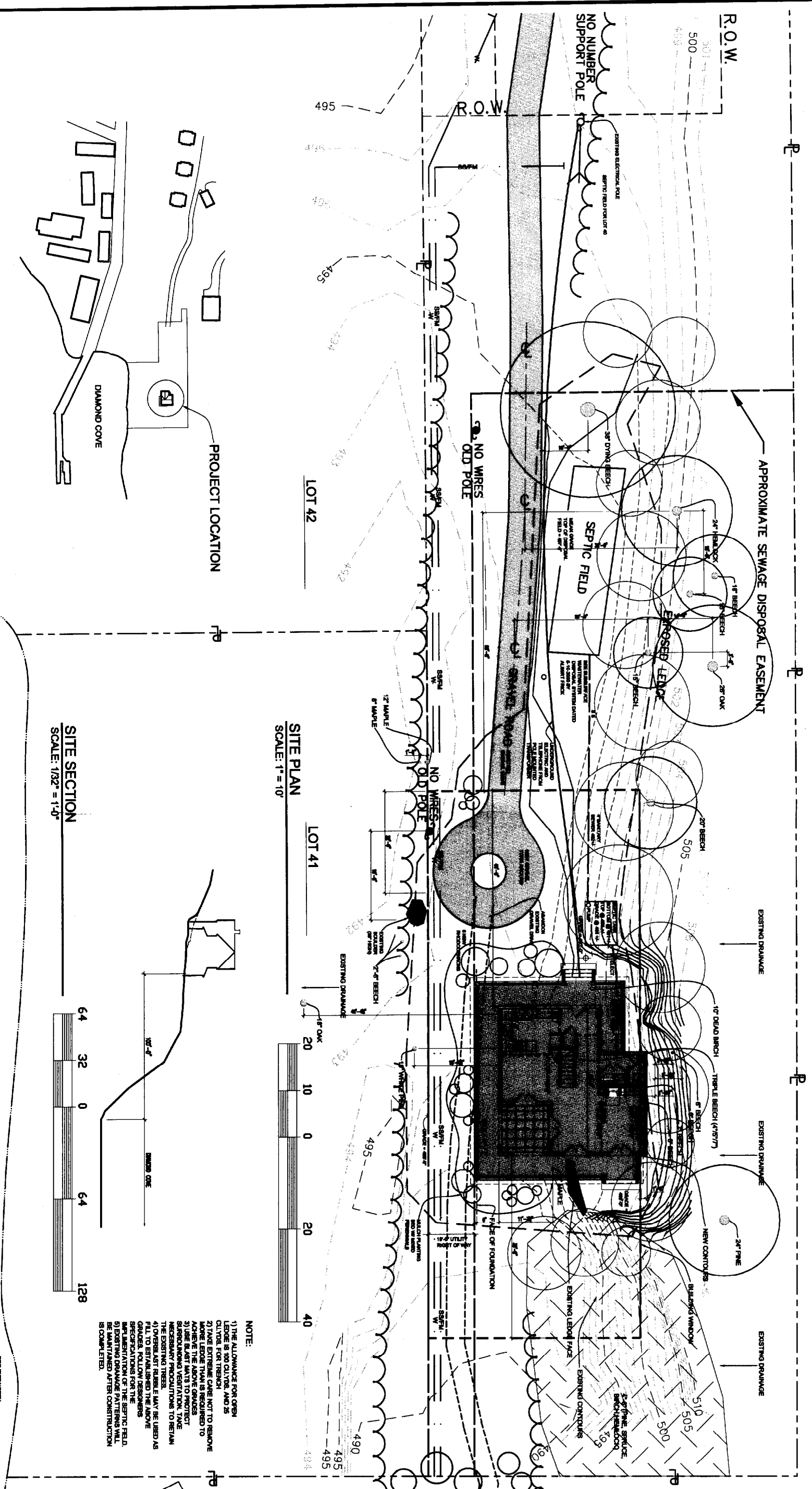
STRUCTURAL:
MECHANICAL/ELECTRICAL/PLUMBING:
NOT TO SCALE

REVISIONS:

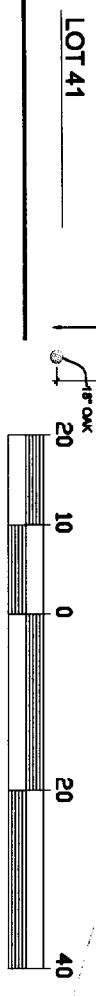
DATE: October 17, 2001
PROJECT No.: 9913
DRAWN BY: WFL, CSC
CHECKED BY: TST
SCALE: AS NOTED

SHEET TITLE:
SITE PLAN

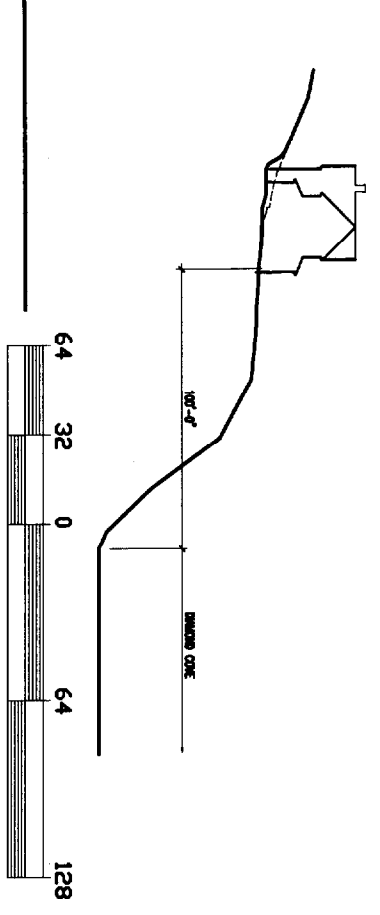
C-1



SITE PLAN
SCALE: 1" = 10'

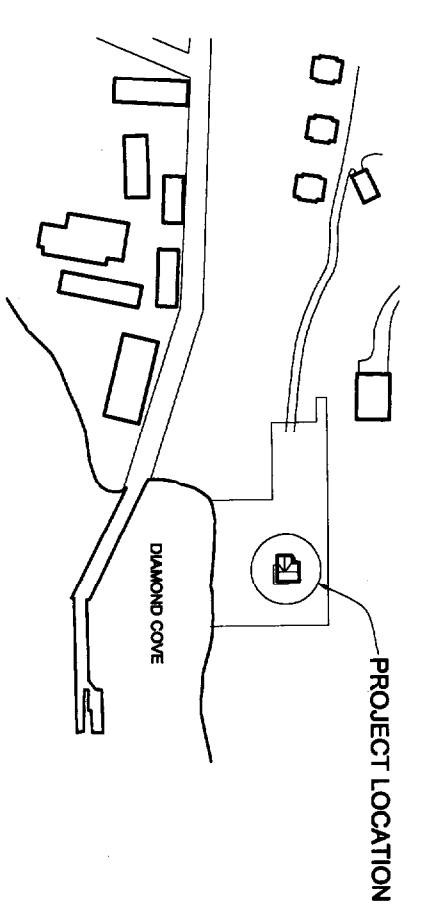


SITE SECTION
SCALE: 1/32" = 1'-0"

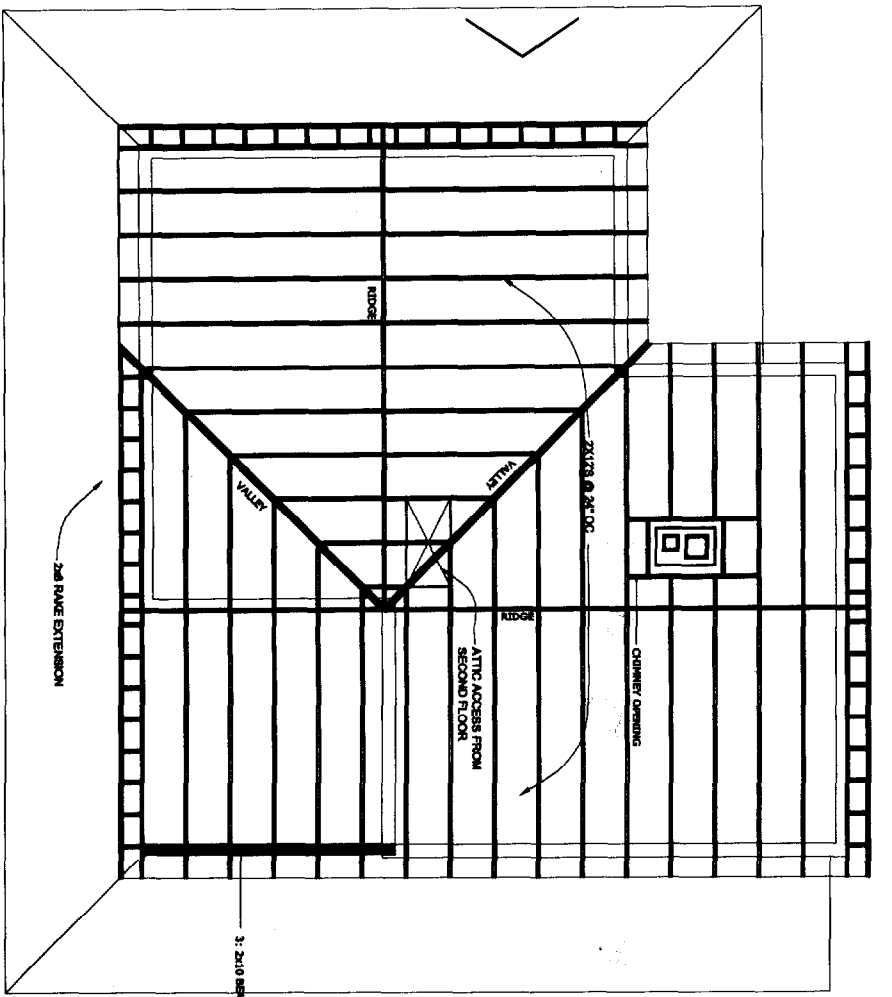


NOTE:
1) THE ALLOWANCE FOR OPEN LEDGE IS 100 CYLINDERS AND 25 CYLINDERS FOR TRENCH.
2) TAKE EXTREME CARE NOT TO REMOVE MORE LEDGE THAN IS REQUIRED TO ACHIEVE THE ABOVE GRADES.
3) USE BLAST MATS TO PROTECT SURROUNDING VEGETATION. TAKE NECESSARY PRECAUTIONS TO REMAIN ABOVE GRADE.
4) DO NOT REMOVE LEDGE UNLESS AS FILL TO ESTABLISH THE ABOVE GRADES. FOLLOW DESIGNERS SPECIFICATIONS FOR THE INSTALLATION OF THE SEPTIC FIELD. EXISTING DRAINAGE PATTERNS WILL BE MAINTAINED AFTER CONSTRUCTION IS COMPLETED.

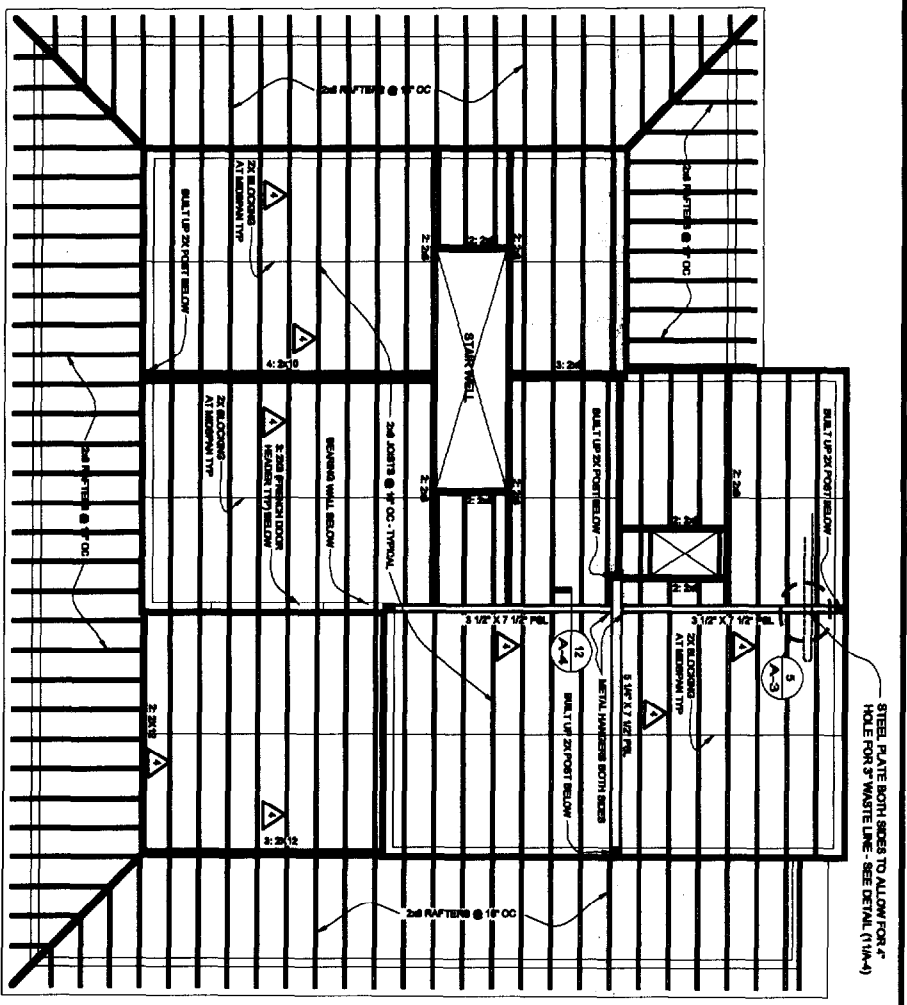
DIAMOND COVE



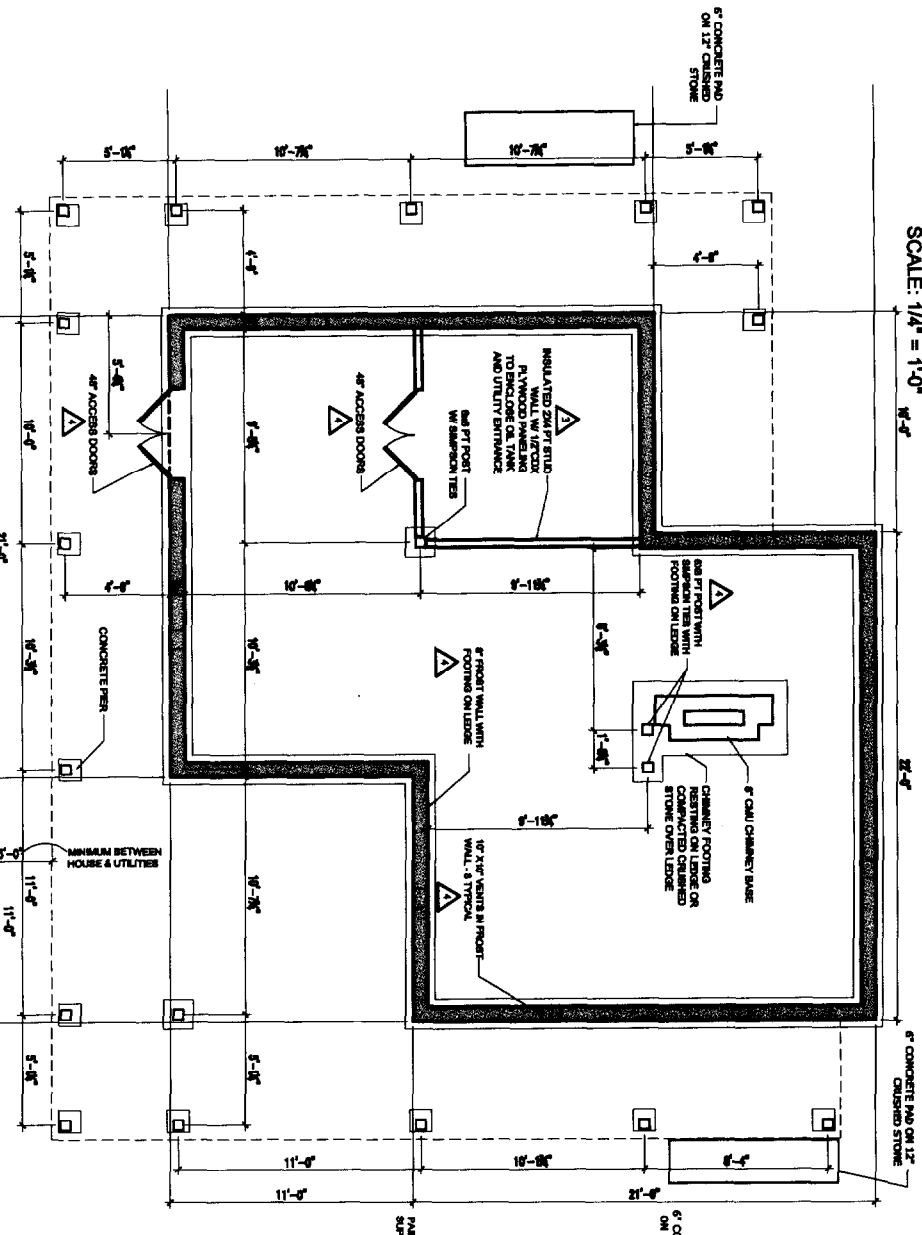
LOCUS PLAN
NOT TO SCALE



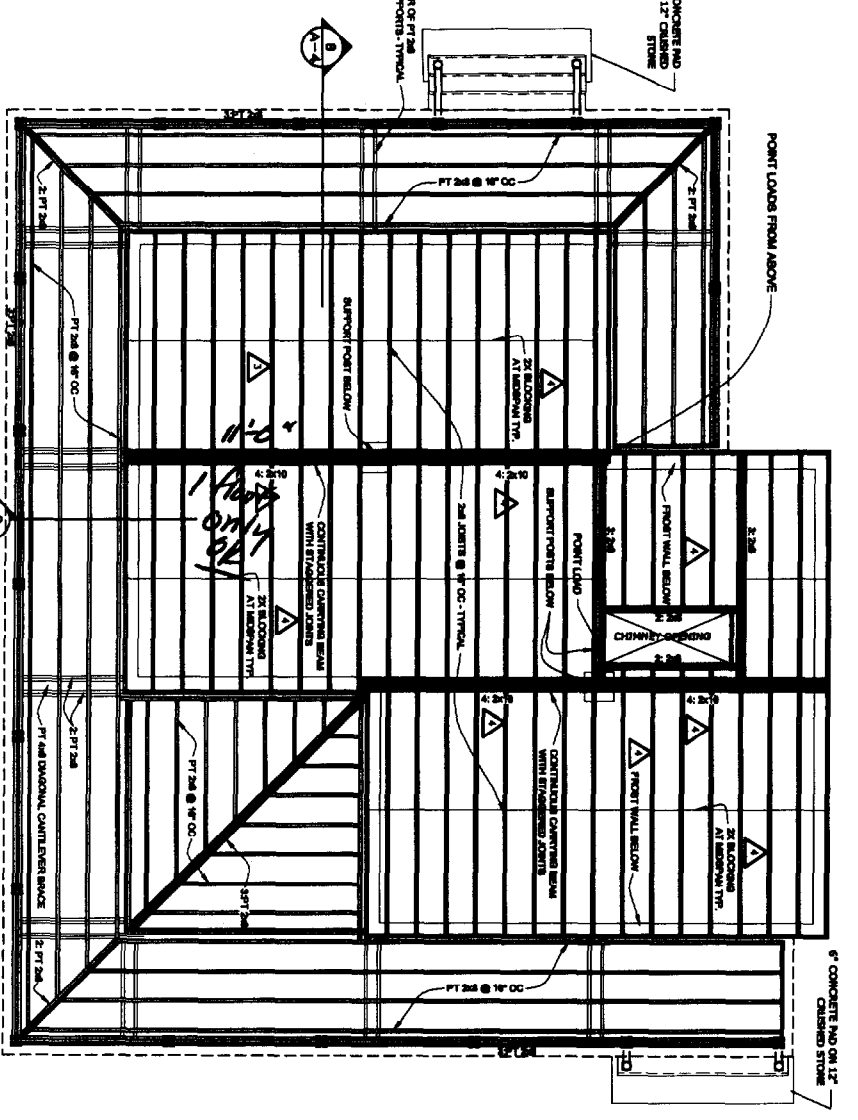
ROOF FRAMING PLAN
SCALE: 1/4" = 1'-0"



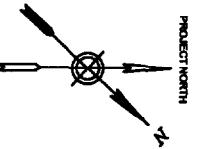
SECOND FLOOR FRAMING PLAN GULIE & SCREW 1/4\"/>



FOOTING PLAN
SCALE: 1/4" = 1'-0"



FIRST FLOOR FRAMING PLAN GULIE & SCREW 1/4\"/>



** Large Plans Stamped*

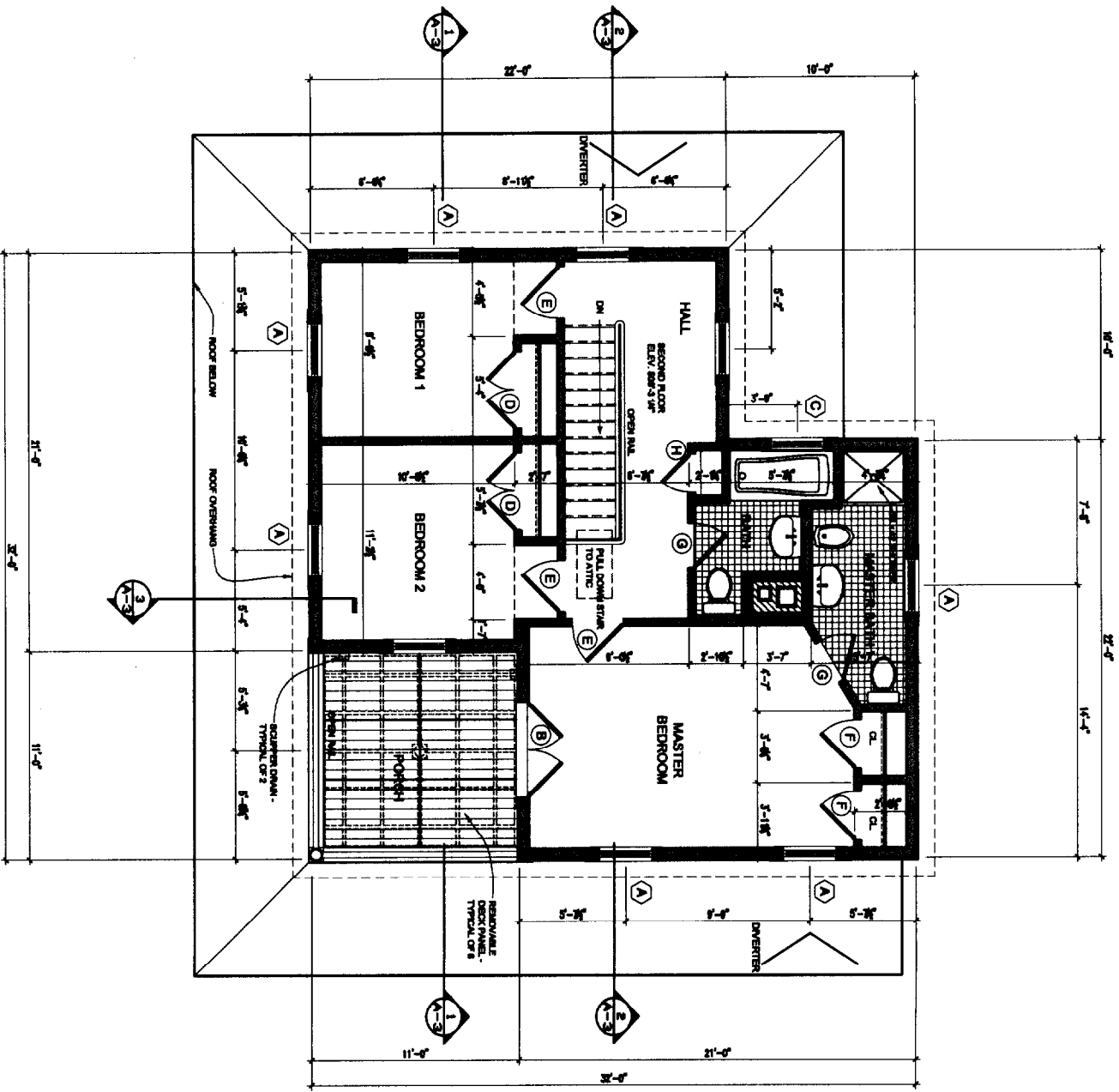
Nathan Residence
Diamond Cove, Great Diamond Island
Portland, Maine

© 2000 THE ARCHITECTS

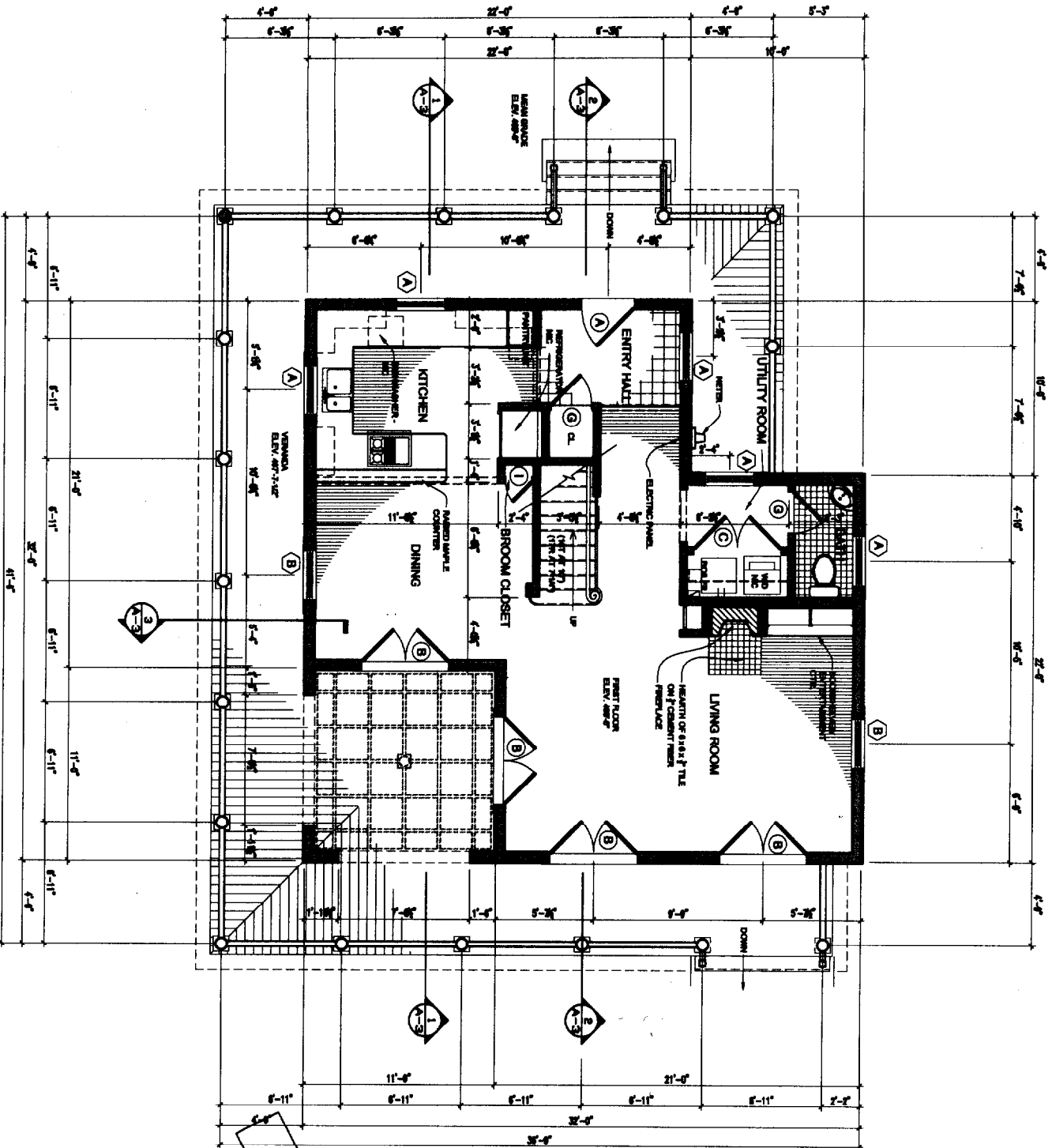
THE ARCHITECTS
180 COMMERCIAL STREET
PORTLAND MAINE 04108
TELEPHONE 207 775 6444
ARCHITECTS PLANNING

CIVIL
STRUCTURAL
MECHANICAL
ELECTRICAL
NOT TO SCALE

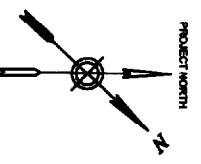
REFERENCE:
GENERAL REFERENCING IN S&S
GENERAL REFERENCING IN S&S
GENERAL REFERENCING IN S&S
DATE: September 21, 2001
PROJECT No.: 9915
DRAWN BY: WITJALS
CHECKED BY: TBT
SCALE: AS NOTED
SHEET TITLE:
FRAMING PLANS



SECOND FLOOR PLAN
SCALE: 1/4" = 1'-0" AREA: 803 SF



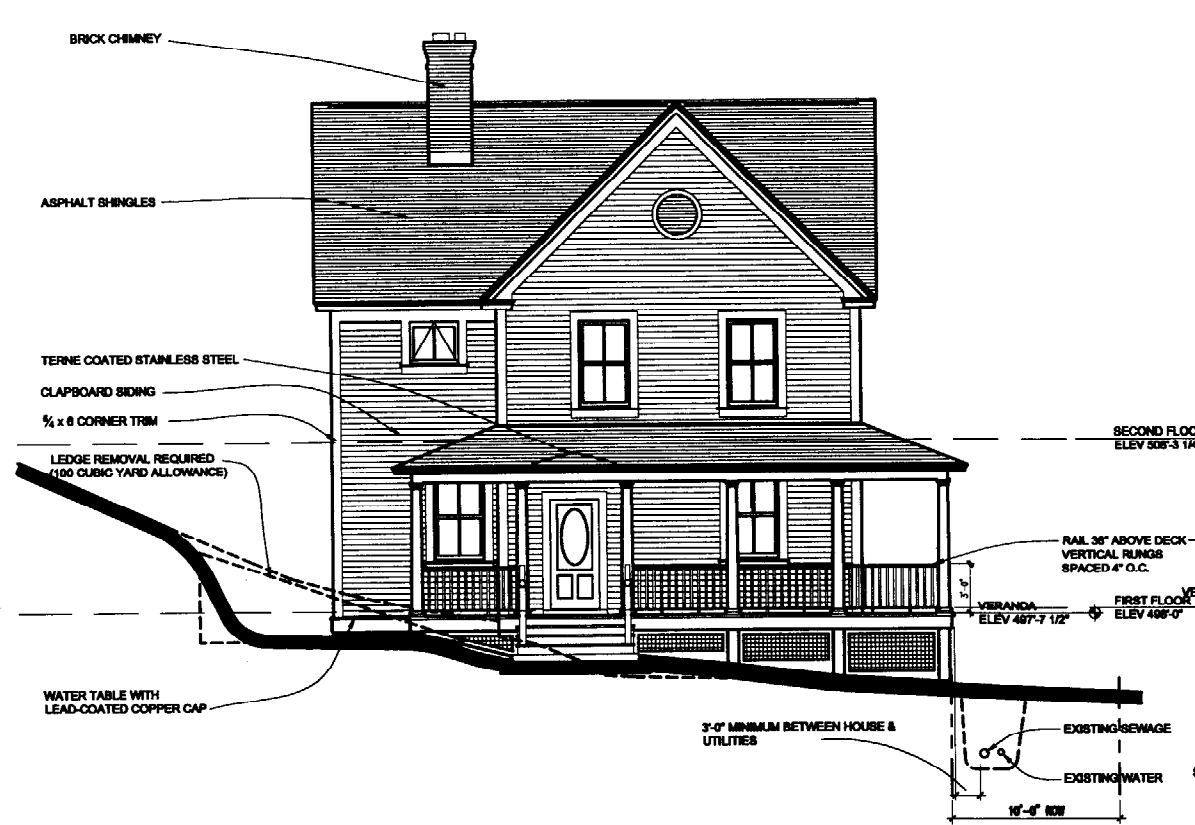
FIRST FLOOR PLAN
SCALE: 1/4" = 1'-0" AREA: 803 SF



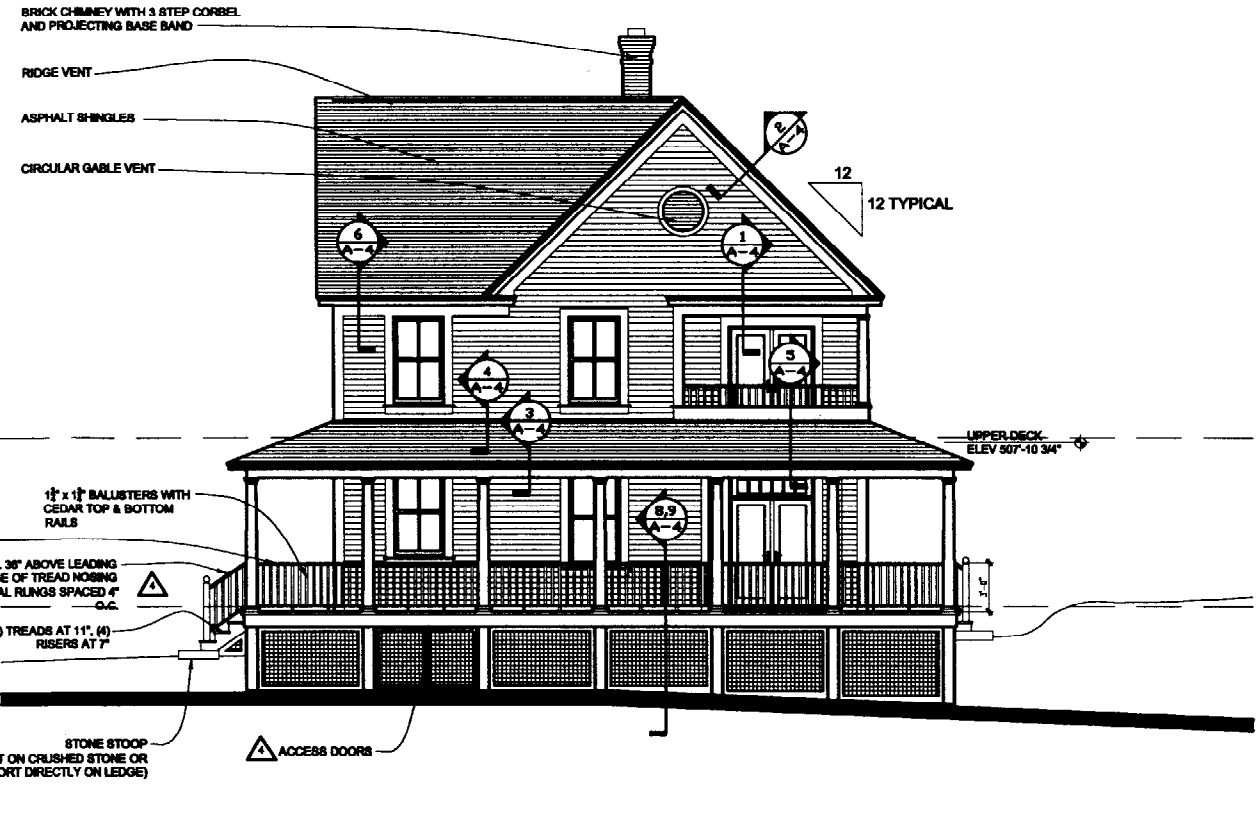
Nathan Residence
Diamond Cove, Great Diamond Island
Portland, Maine

THE ARCHITECTS
100 COMMERCIAL STREET
PORTLAND, MAINE 04101
TEL: 555-1234
WWW.THEARCHITECTS.COM

| | |
|--------------|--------------------|
| DATE: | September 21, 2008 |
| PROJECT No.: | 9915 |
| DRAWN BY: | WJT, CMC |
| CHECKED BY: | TBT |
| SCALE: | AS NOTED |
| SHEET TITLE: | FLOOR PLANS |



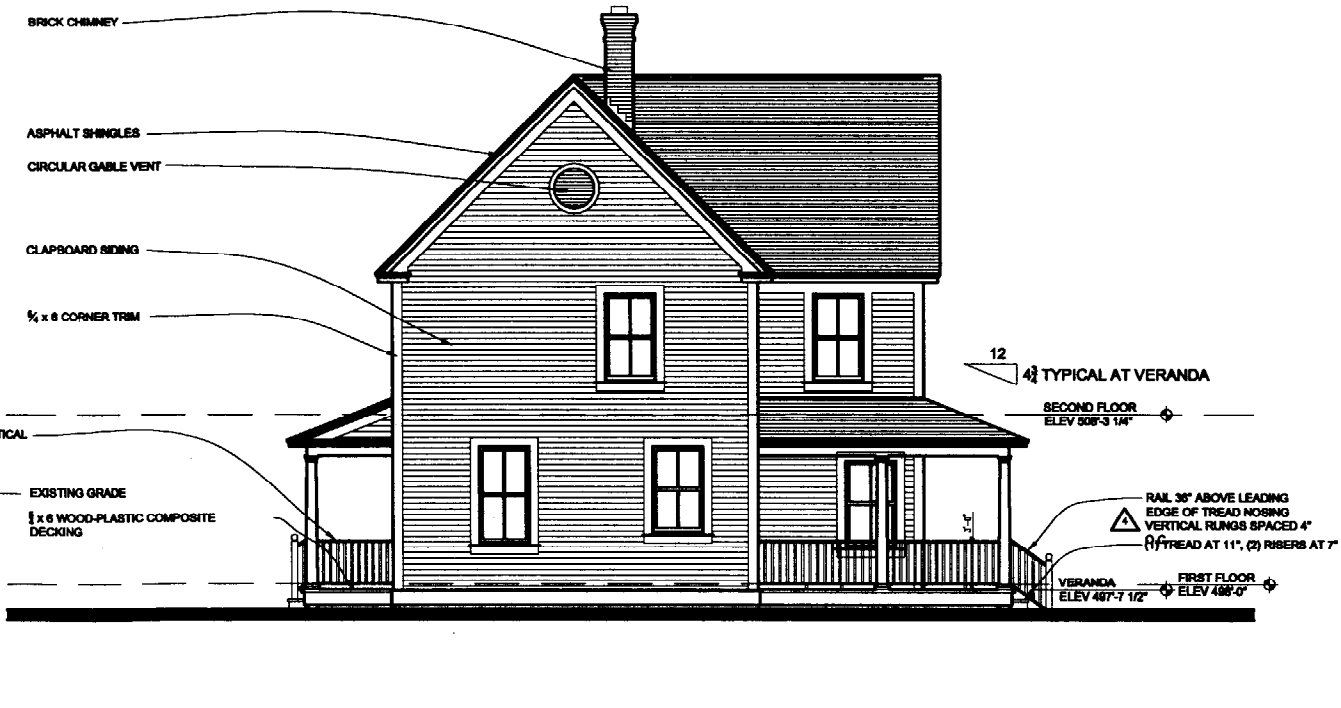
WEST ELEVATION
SCALE: 3/16" = 1'-0"



SOUTH ELEVATION
SCALE: 3/16" = 1'-0"



EAST ELEVATION
SCALE: 3/16" = 1'-0"



NORTH ELEVATION
SCALE: 3/16" = 1'-0"

© 2000 TTH ARCHITECTS

Nathan Residence
Diamond Cove, Great Diamond Island
Portland, Maine

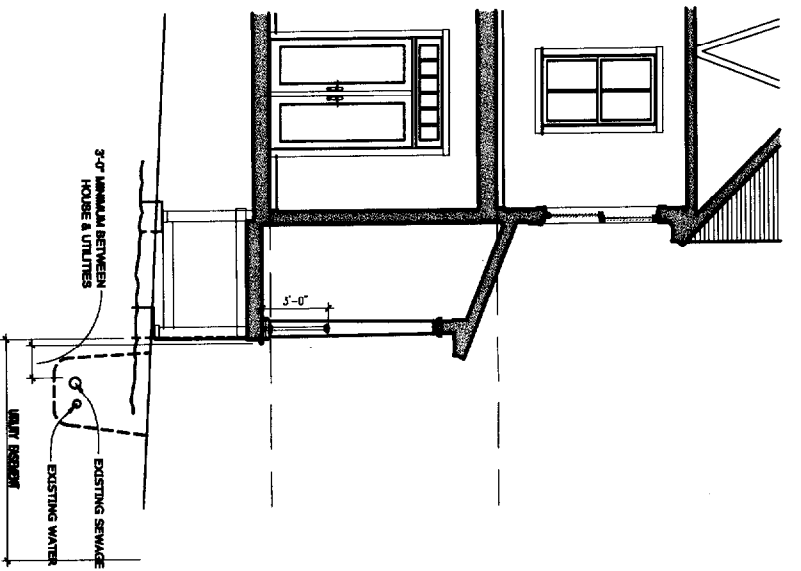
TTH ARCHITECTS
100 COMMERCIAL STREET
PORTLAND MAINE 04101
TELEPHONE 207 775 6141
ARCHITECTURE PLANNING

CIVIL:
STRUCTURAL:
MECHANICAL:
ELECTRICAL:

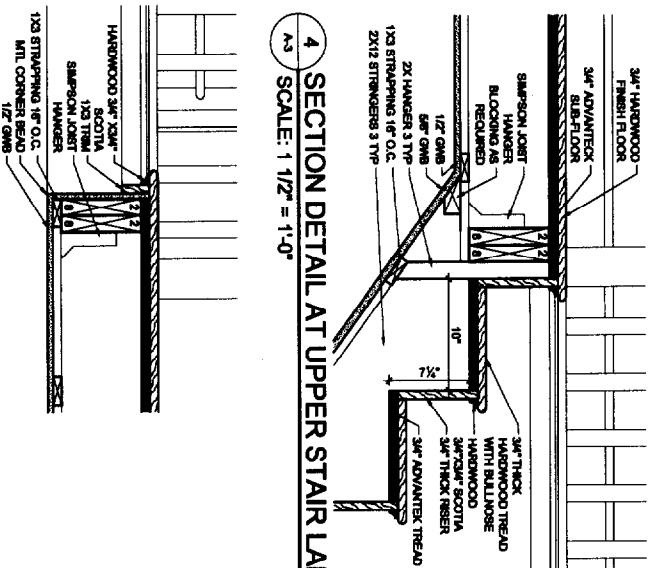
REVISIONS:
GENERAL REVISIONS 09.20.05
GENERAL REVISIONS 11.25.05

DATE: September 21, 2001
PROJECT No. 9915
DRAWN BY: WJT, CBC
CHECKED BY: TST
SCALE: AS NOTED

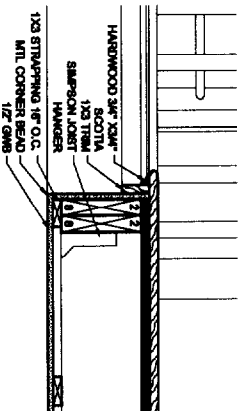
SHEET TITLE:
ELEVATIONS



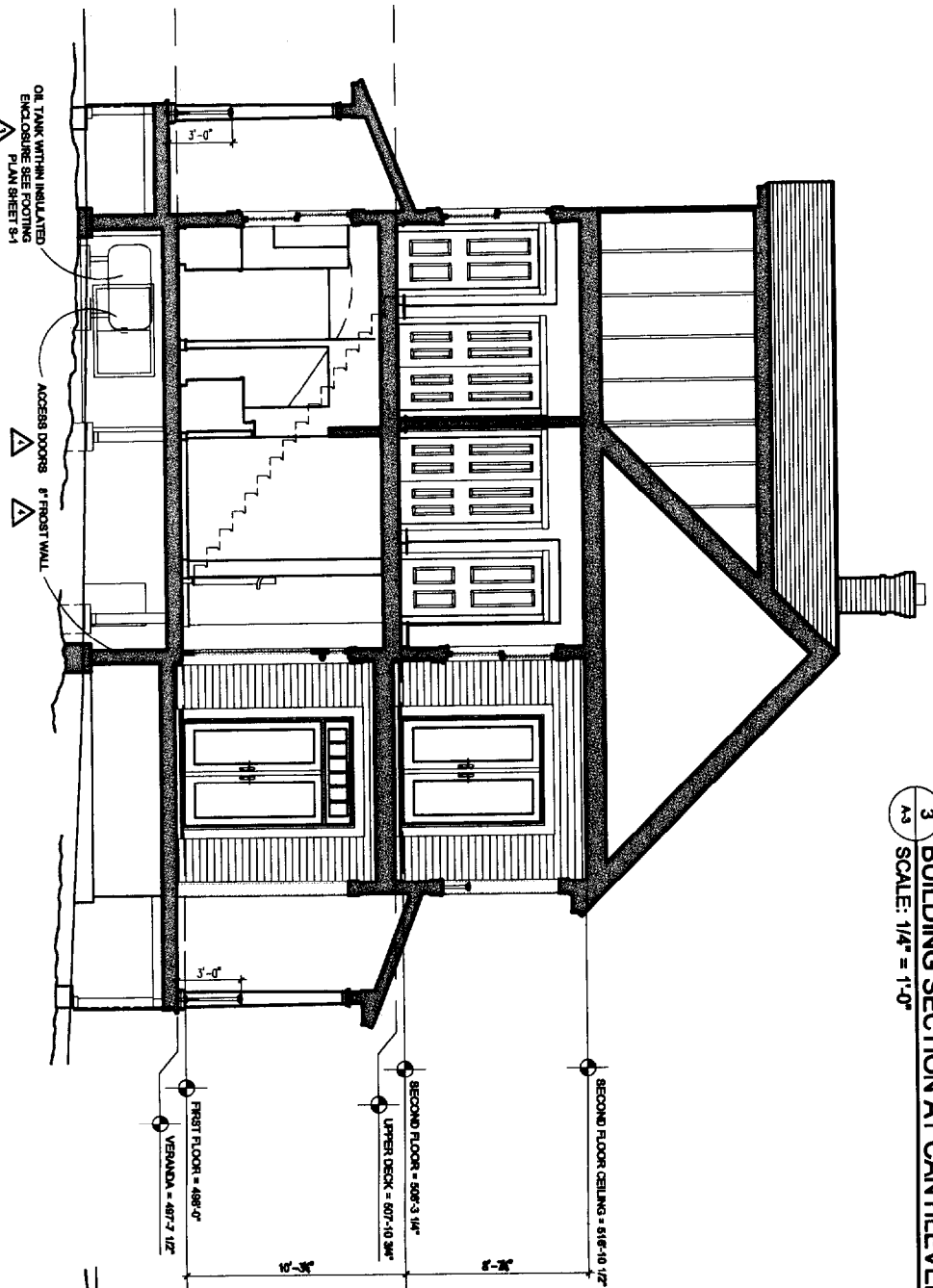
3 BUILDING SECTION AT CANTILEVERED VERANDA
SCALE: 1/4" = 1'-0"



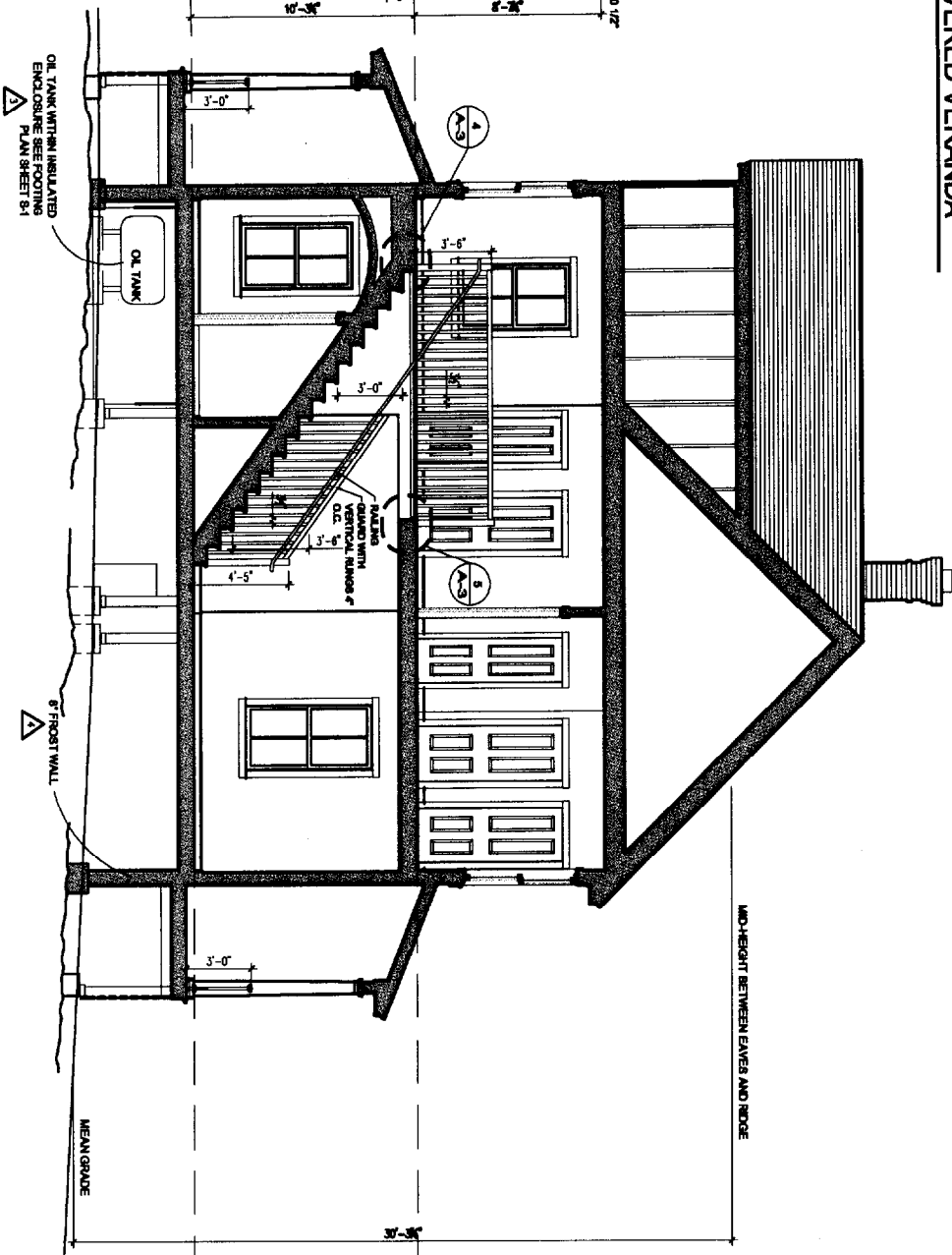
4 SECTION DETAIL AT UPPER STAIR LANDING
SCALE: 1 1/2" = 1'-0"



5 SECTION DETAIL AT STAIR OPENING
SCALE: 1 1/2" = 1'-0"



1 BUILDING SECTION AT PORCH
SCALE: 1/4" = 1'-0"



2 BUILDING SECTION AT STAIR
SCALE: 1/4" = 1'-0"

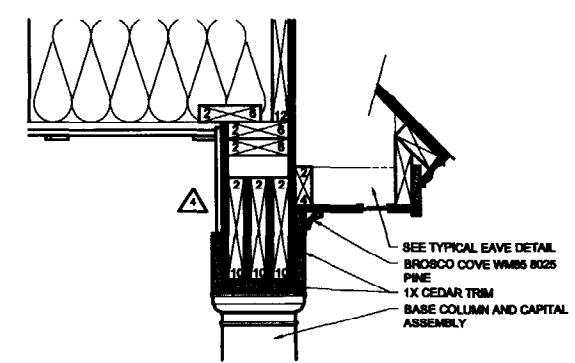
Nathan Residence
Diamond Cove, Great Diamond Island
Portland, Maine

© 2000 TTH ARCHITECTS

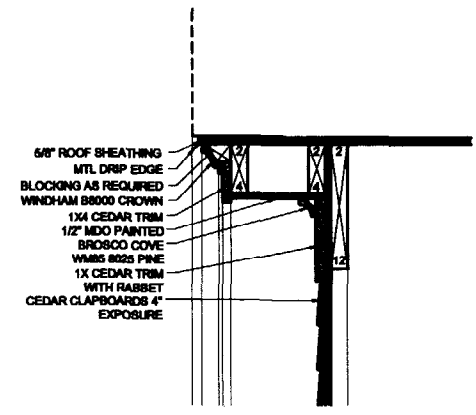
TTH ARCHITECTS
100 COMMERCIAL STREET
PORTLAND, MAINE 04101
TELEPHONE: 207 773 8411
ARCHITECTURE PLANNING

MECHANICAL
ELECTRICAL
NOT TO SCALE

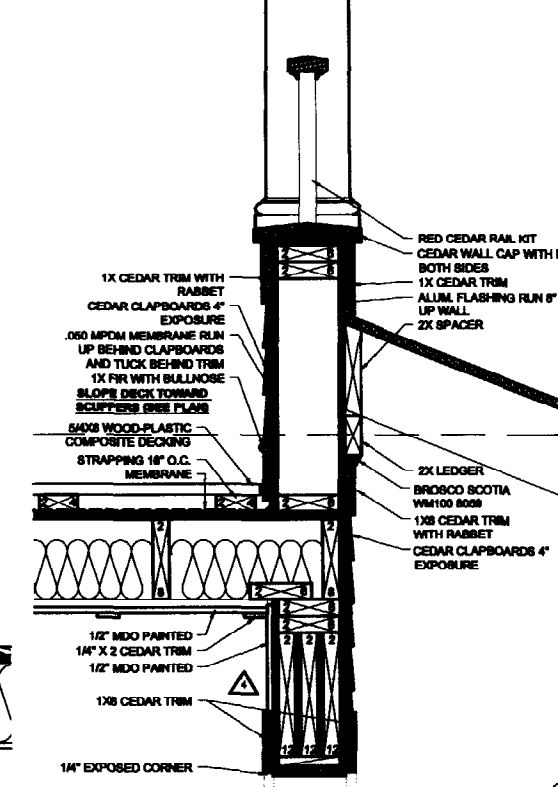
REVISIONS:
GENERAL REVISIONS BY: [initials]
GENERAL REVISIONS 11.28.00
DATE: September 21, 2001
PROJECT No. 9915
DRAWN BY: WJT, CMC
CHECKED BY: TST
SCALE: AS NOTED
SHEET TITLE:
SECTIONS



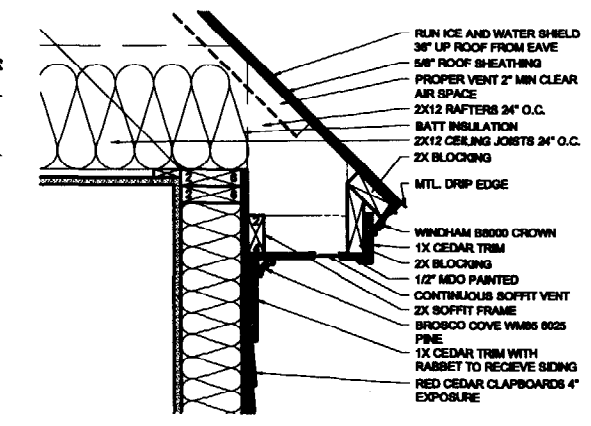
1 PORCH HEAD/TYPICAL RETURN
SCALE: 1 1/2" = 1'-0"



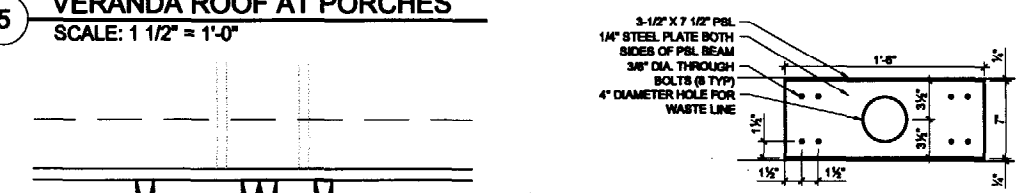
2 TYPICAL RAKE
SCALE: 1 1/2" = 1'-0"



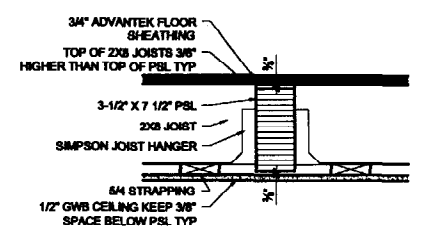
5 VERANDA ROOF AT PORCHES
SCALE: 1 1/2" = 1'-0"



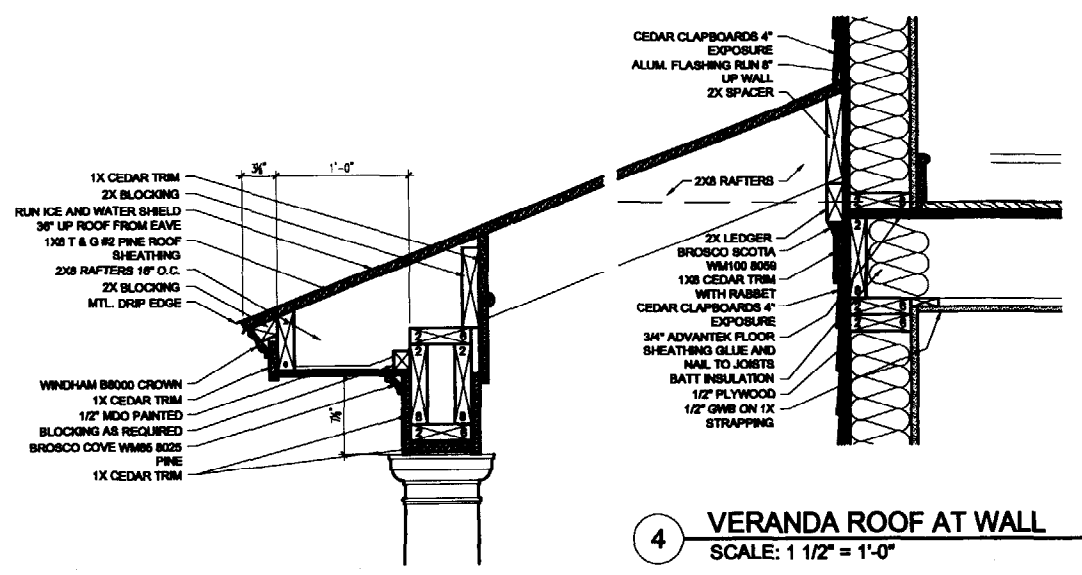
6 TYPICAL EAVE
SCALE: 1 1/2" = 1'-0"



11 STEEL SIDE PLATE DETAIL
SCALE: 1 1/2" = 1'-0"

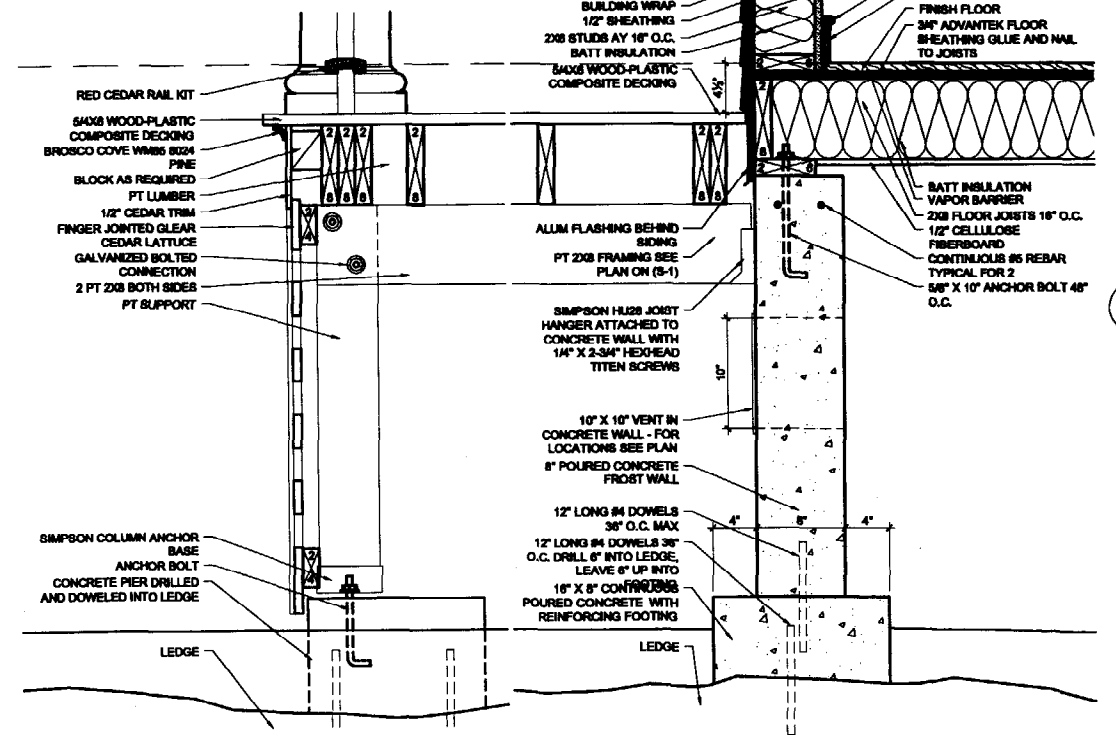


12 PSL AND FRAMING DETAIL (TYPICAL)
SCALE: 1 1/2" = 1'-0"



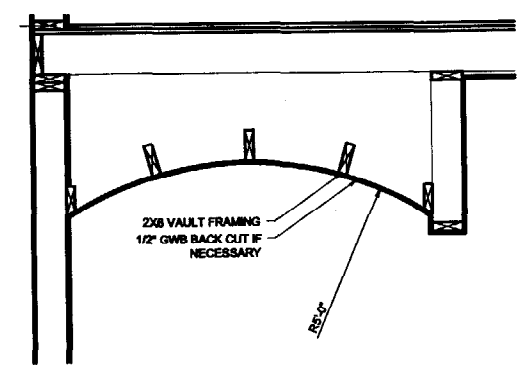
4 VERANDA ROOF AT WALL
SCALE: 1 1/2" = 1'-0"

3 VERANDA EAVE
SCALE: 1 1/2" = 1'-0"



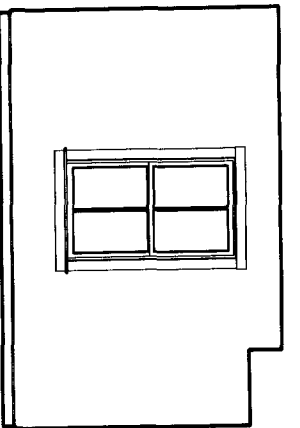
8 VERANDA EDGE/SKIRT
SCALE: 1 1/2" = 1'-0"

9 VERANDA AT DECK/PIER
SCALE: 1 1/2" = 1'-0"

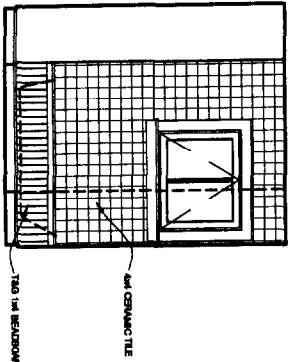


7 VAULTED CEILING AT ENTRANCE
SCALE: 3/4" = 1'-0"

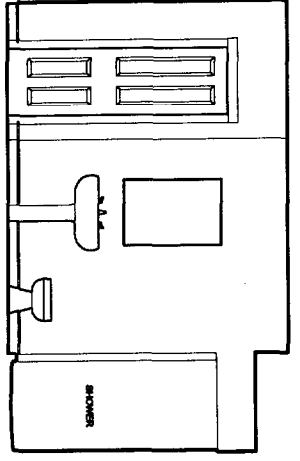
NOT TO SCALE



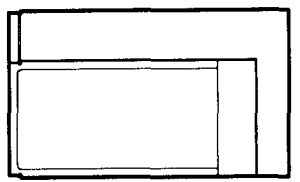
W-BEDROOM
SCALE: 3/8" = 1'-0"



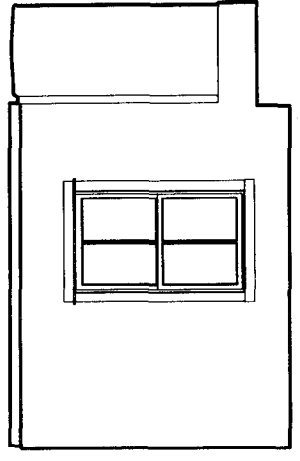
W-BATH
SCALE: 3/8" = 1'-0"



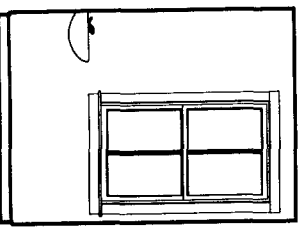
S-MASTER BATH
SCALE: 3/8" = 1'-0"



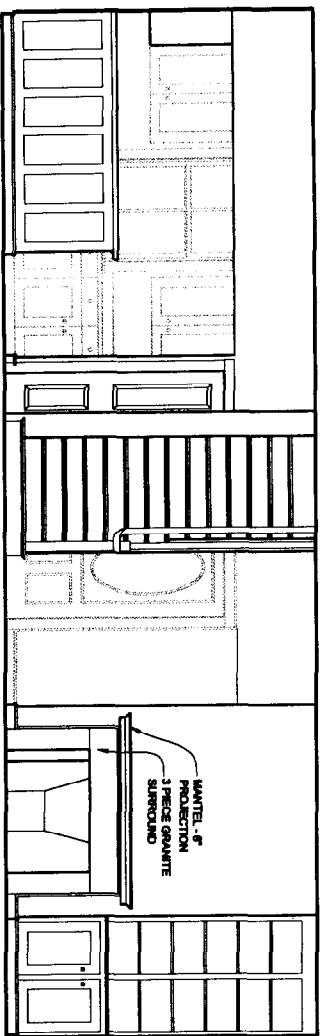
W-MASTER BATH
SCALE: 3/8" = 1'-0"



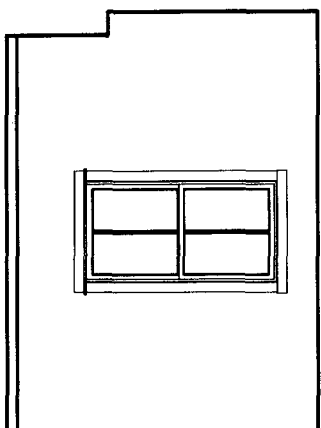
N-MASTER BATH
SCALE: 3/8" = 1'-0"



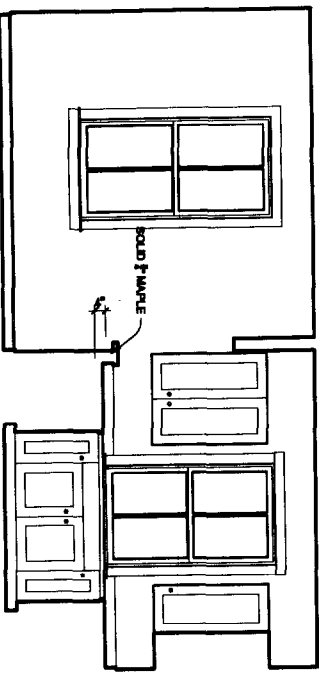
N-HALF BATH
SCALE: 3/8" = 1'-0"



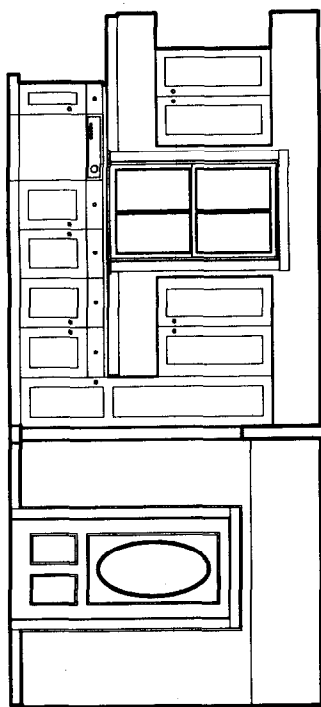
W-DINING ROOM
SCALE: 3/8" = 1'-0"



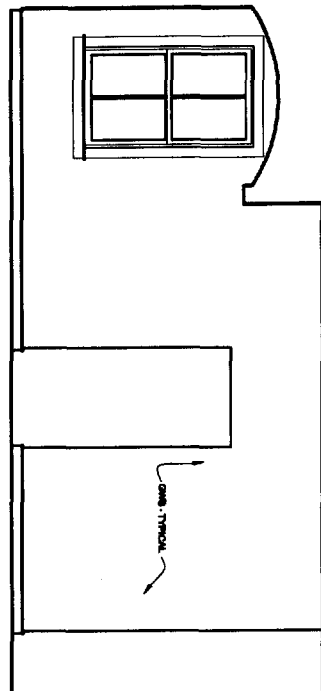
N-LIVING ROOM
SCALE: 3/8" = 1'-0"



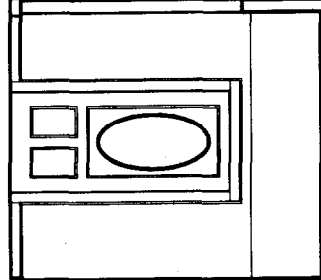
S-DINING ROOM
SCALE: 3/8" = 1'-0"



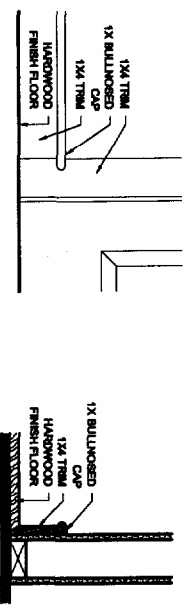
W-KITCHEN
SCALE: 3/8" = 1'-0"



N-ENTRANCE
SCALE: 3/8" = 1'-0"



W-ENTRANCE
SCALE: 3/8" = 1'-0"



TYPICAL BASE
SCALE: 1 1/2" = 1'-0"

Nathan Residence

Diamond Cove, Great Diamond Island
Portland, Maine

TRH ARCHITECTS
180 COMMERCIAL STREET
PORTLAND MAINE 04101
TELEPHONE: 207 775 6141
ARCHITECTURE PLANNING

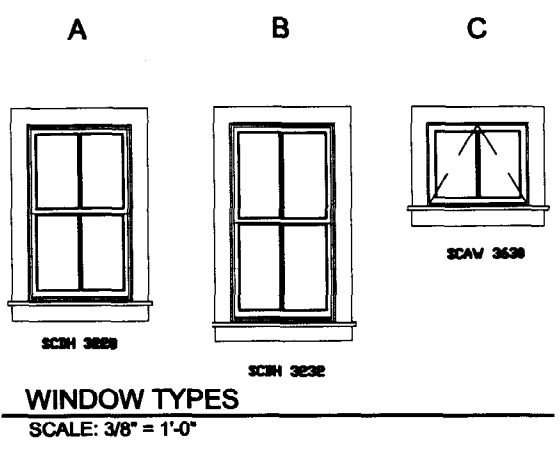
CIVIL
STRUCTURAL:
MECHANICAL:
ELECTRICAL:
NOT TO SCALE

REVISIONS:
GENERAL REVISIONS (R.A.S.)
DATE: September 21, 2001
PROJECT No. 9915
DRAWN BY: WJT
CHECKED BY: TET
SCALE: AS NOTED
SHEET TITLE
INTERIOR
ELEVATIONS

| FINISH SCHEDULE | | | | | | | | | | | | | |
|-----------------|----------|--------|----------|--------|----------|--------|----------|--------|----------|--------|---------|--------|-------------------------|
| ROOM NAME | FLOOR | | N. WALL | | E. WALL | | S. WALL | | W. WALL | | CEILING | | NOTES |
| | MATERIAL | FINISH | MATERIAL | FINISH | MATERIAL | FINISH | MATERIAL | FINISH | MATERIAL | FINISH | TYPE | FINISH | |
| KITCHEN | TILE | VINYL | GBW | PAINT | GBW | PAINT | GBW | PAINT | GBW | PAINT | GBW | PAINT | |
| DINING | HDWD | HDWD | GBW | PAINT | GBW | PAINT | GBW | PAINT | GBW | PAINT | GBW | PAINT | |
| LIVING | HDWD | HDWD | GBW | PAINT | GBW | PAINT | GBW | PAINT | GBW | PAINT | GBW | PAINT | |
| BEDROOM 1 | HDWD | HDWD | GBW | PAINT | GBW | PAINT | GBW | PAINT | GBW | PAINT | GBW | PAINT | |
| OFFICE | HDWD | HDWD | GBW | PAINT | GBW | PAINT | GBW | PAINT | GBW | PAINT | GBW | PAINT | |
| BATH 1 | TILE | VINYL | GBW | PAINT | GBW | PAINT | GBW | PAINT | GBW | PAINT | GBW | PAINT | |
| STORAGE 1 | HDWD | HDWD | GBW | PAINT | GBW | PAINT | GBW | PAINT | GBW | PAINT | GBW | PAINT | |
| MASTER BEDROOM | HDWD | HDWD | GBW | PAINT | GBW | PAINT | GBW | PAINT | GBW | PAINT | GBW | PAINT | |
| MASTER BATH | TILE | VINYL | GBW | PAINT | GBW | PAINT | GBW | PAINT | GBW | PAINT | GBW | PAINT | |
| CLOSET 1 | CARPET | VINYL | GBW | PAINT | GBW | PAINT | GBW | PAINT | GBW | PAINT | GBW | PAINT | |
| CLOSET 2 | CARPET | VINYL | GBW | PAINT | GBW | PAINT | GBW | PAINT | GBW | PAINT | GBW | PAINT | |
| STORAGE 2 | | | | | | | | | | | | | AS EXISTING ATTIC SPACE |

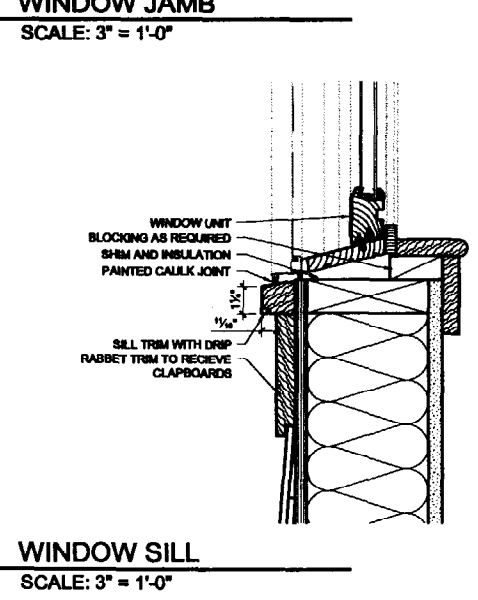
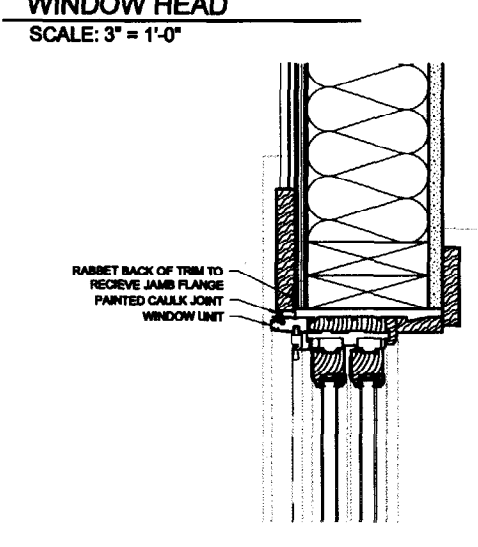
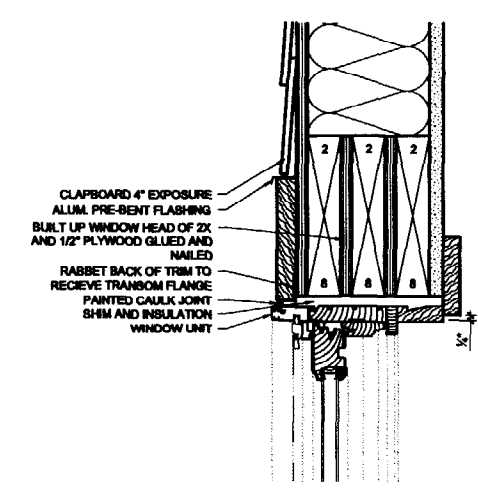
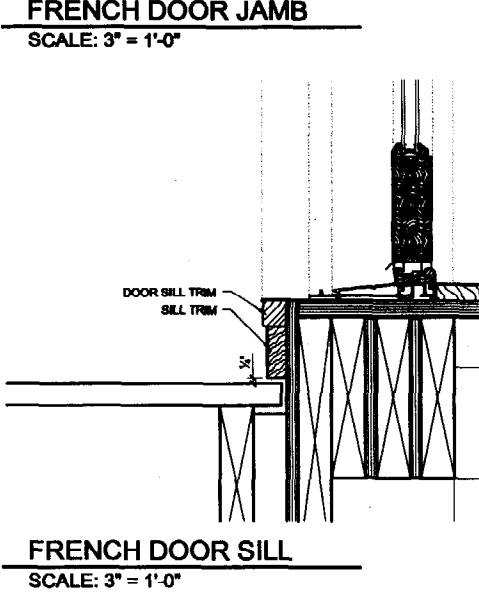
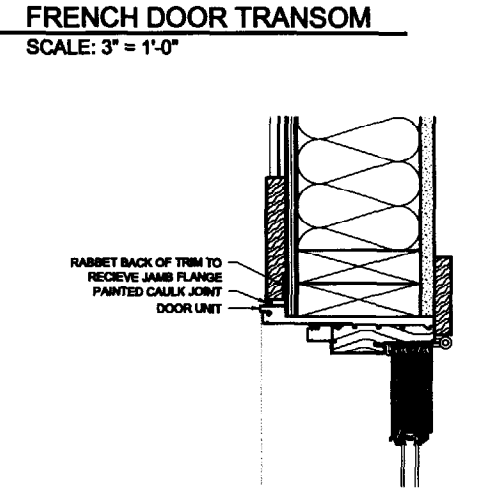
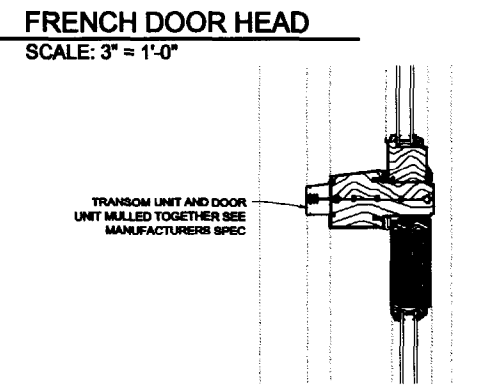
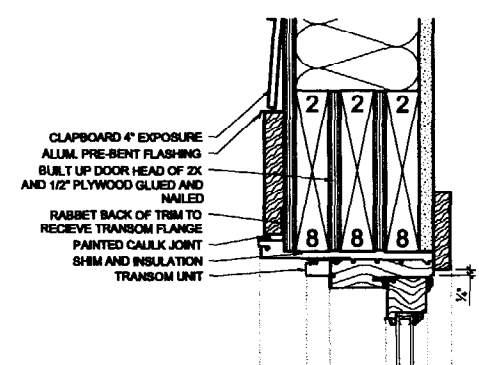
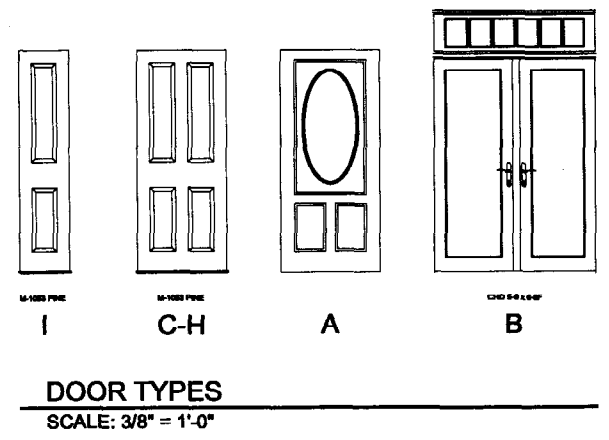
| WINDOW SCHEDULE | | | | | | | | | |
|-----------------|-----------|-----------|--------|------|-----------|------|-------|----------|--|
| ROUGH | WIND. | | FRAMES | | HEAD JAMB | THRS | LABEL | HDWR SET | REMARKS |
| | THK. | TYPE | MAT. | TYPE | | | | | |
| A | 3'-2 1/8" | 5'-4 1/8" | CLAD | CLAD | | | | | NORCO SCDH 3228 - 2W X 1H LITE PATTERN |
| B | 3'-2 1/8" | 6'-0 1/8" | CLAD | CLAD | | | | | NORCO SCDH 3232 - 2W X 1H LITE PATTERN |
| C | 2'-6 1/2" | 3'-0 3/4" | CLAD | CLAD | | | | | NORCO SCAW 3630 - 2W X 1H LITE PATTERN |

FULL SCREENS ALL OPENINGS



| DOOR SCHEDULE | | | | | | | | | |
|----------------|-------------|--------|--------|------|-----------|------|-------|----------|--------------------------------|
| UNIT DIMENSION | DOORS | | FRAMES | | HEAD JAMB | THRS | LABEL | HDWR SET | REMARKS |
| | THK. | TYPE | MAT. | TYPE | | | | | |
| A | 3'0" x 6'8" | 1 3/4" | CLAD | A | CLAD | | | | MATCHING TRANSOM CHD 5016-1 |
| B | 3'0" x 6'8" | 1 3/4" | CLAD | B | CLAD | | | | |
| C | 3'0" x 6'8" | 1 3/8" | WOOD | C | WOOD | | | | |
| D | 4'0" x 6'8" | 1 3/8" | WOOD | D | WOOD | | | | |
| E | 2'8" x 6'8" | 1 3/8" | WOOD | E | WOOD | | | | |
| F | 2'6" x 6'8" | 1 3/8" | WOOD | F | WOOD | | | | |
| G | 2'4" x 6'8" | 1 3/8" | WOOD | | WOOD | | | | |
| H | 2'0" x 6'8" | 1 3/8" | WOOD | | WOOD | | | | |
| I | 1'8" x 6'8" | 1 3/8" | WOOD | | WOOD | | | | |

ALL INTERIOR DOORS - M-1053
ALL CASING - 8630 1/2" x 2 1/2"



© 2000 TFM ARCHITECTS

Nathan Residence
Diamond Cove, Great Diamond Island
Portland, Maine

TFM ARCHITECTS
100 COMMERCIAL STREET
PORTLAND MAINE 04101
TELEPHONE 207 775 6141
ARCHITECTURE PLANNING

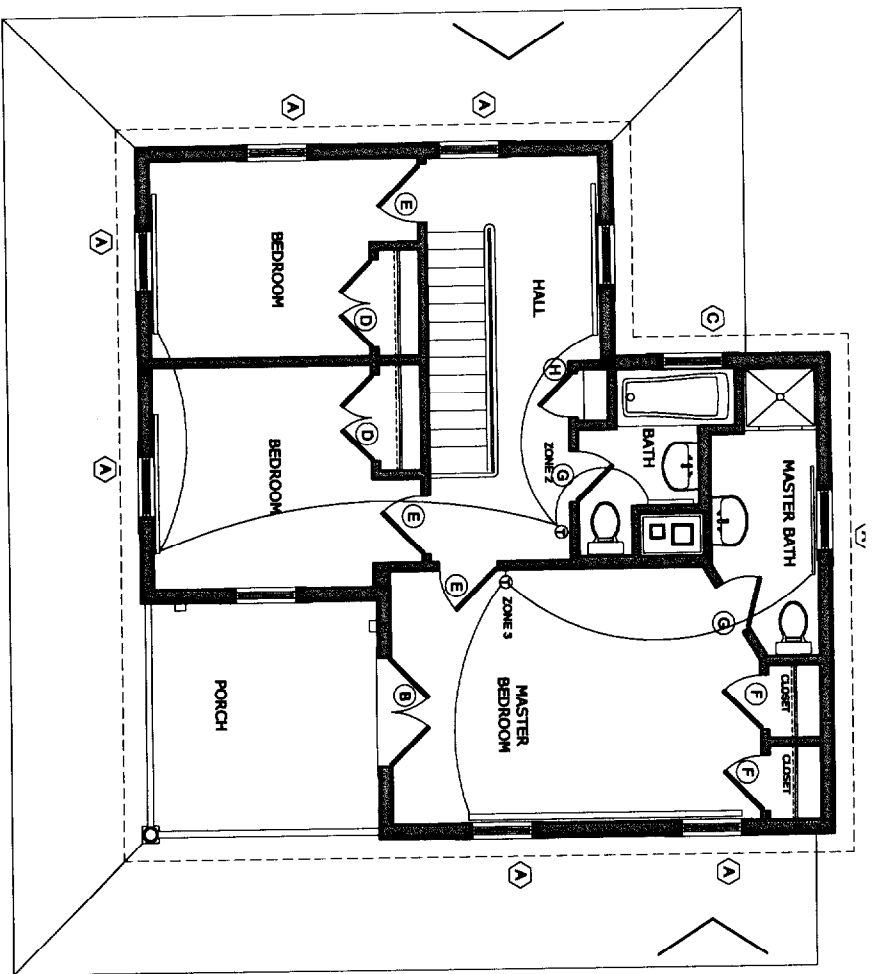
CIVIL:
STRUCTURAL:
MECHANICAL:
ELECTRICAL:

NOT TO SCALE

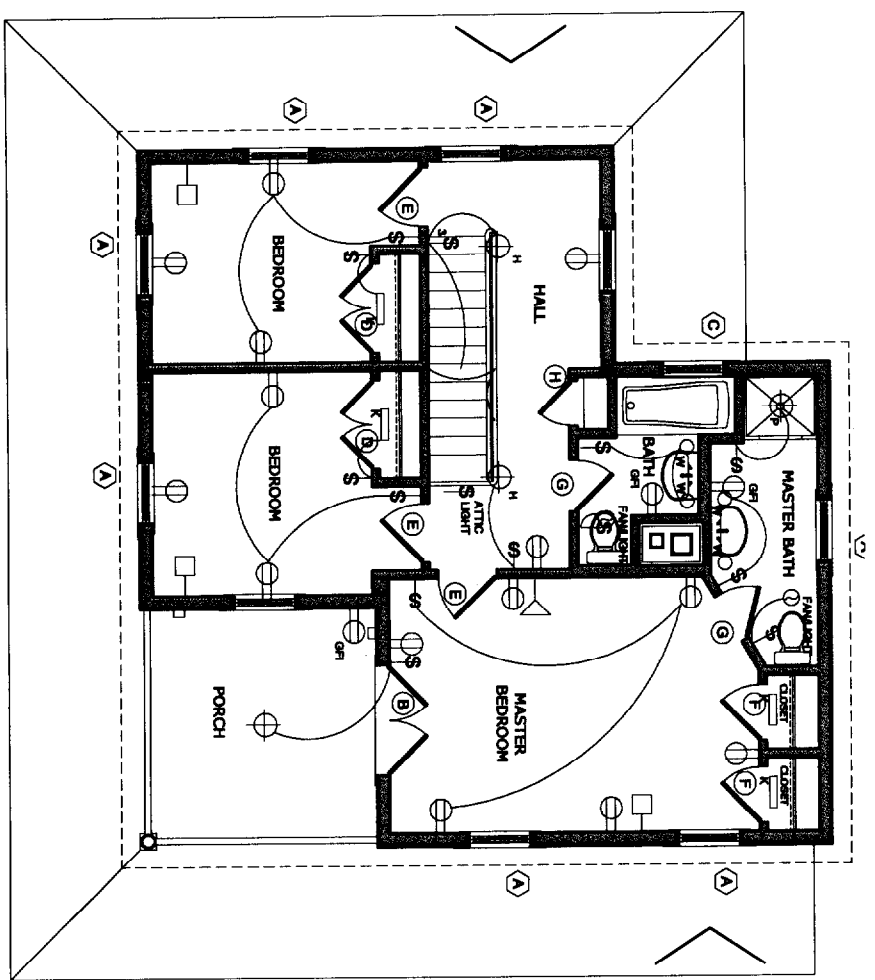
REVISIONS:
GENERAL REVISIONS 01.30.05

DATE: September 21, 2001
PROJECT No. 9915
DRAWN BY: WIT
CHECKED BY: TST
SCALE: AS NOTED

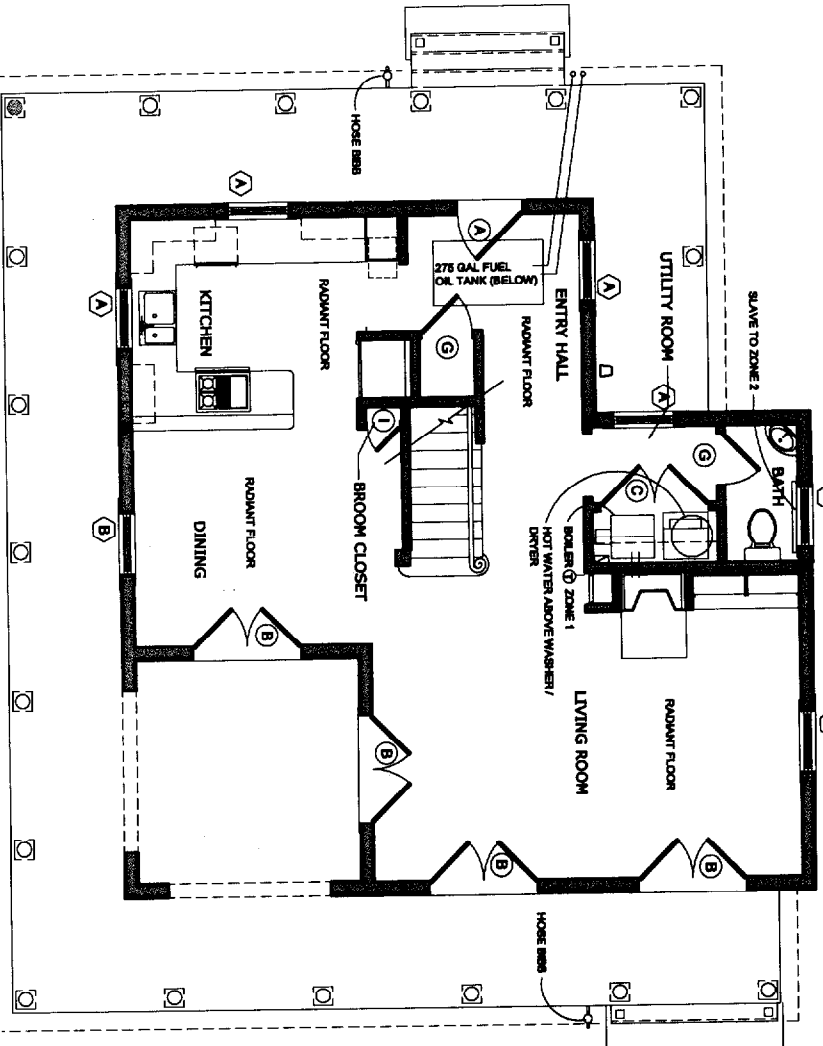
SHEET TITLE:
DOORS & WINDOWS



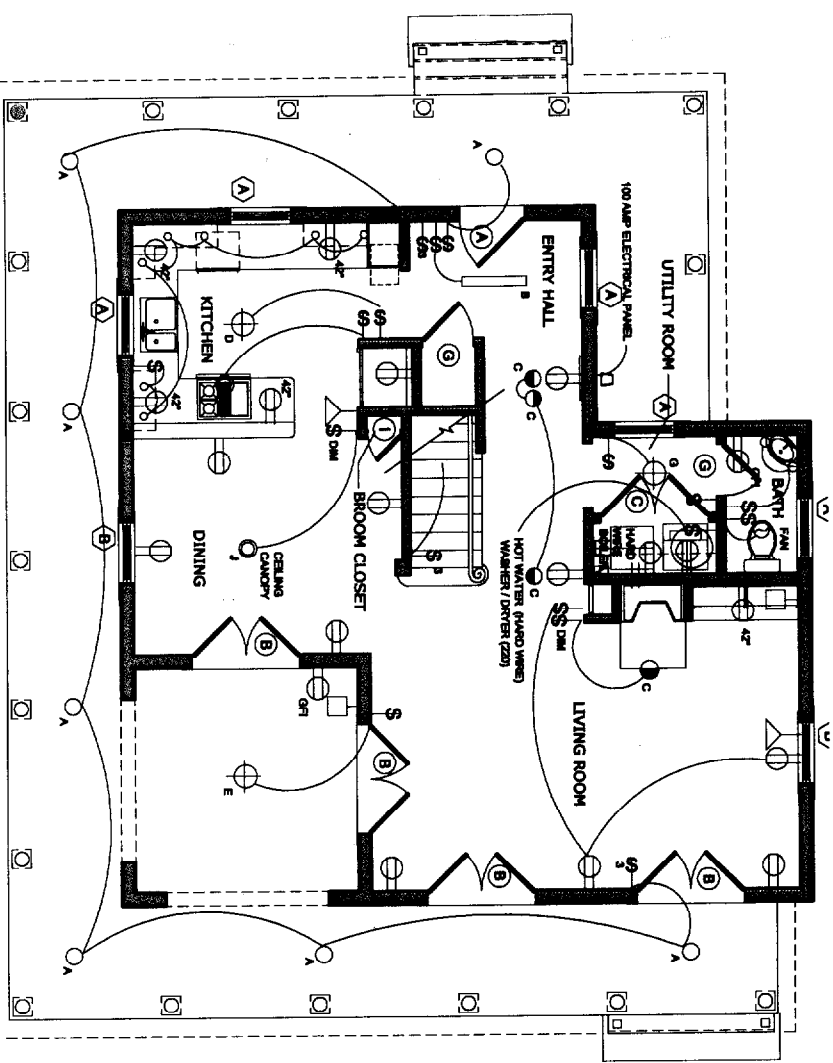
MECHANICAL - SECOND FLOOR PLAN
SCALE: 1/4" = 1'-0"



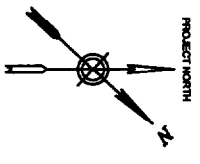
ELECTRICAL - SECOND FLOOR PLAN
SCALE: 1/4" = 1'-0"



MECHANICAL - FIRST FLOOR PLAN
SCALE: 1/4" = 1'-0"



ELECTRICAL - FIRST FLOOR PLAN
SCALE: 1/4" = 1'-0"



NOT TO SCALE

THH ARCHITECTS
200 THH ARCHITECTS
1000 BROADWAY, 10TH FLOOR
PORTLAND, MAINE 04108
TEL: 754-2222 FAX: 754-2222
TELEPHONE 207 775 4441
ARCHITECTURAL PLANNING

DATE: September 21, 2001
PROJECT No.: 9915
DRAWN BY: WJT
CHECKED BY: WJT
SCALE: AS NOTED
SHEET TITLE:
MECHANICAL & ELECTRICAL PLANS

Nathan Residence
Diamond Cove, Great Diamond Island
Portland, Maine

M/E-1