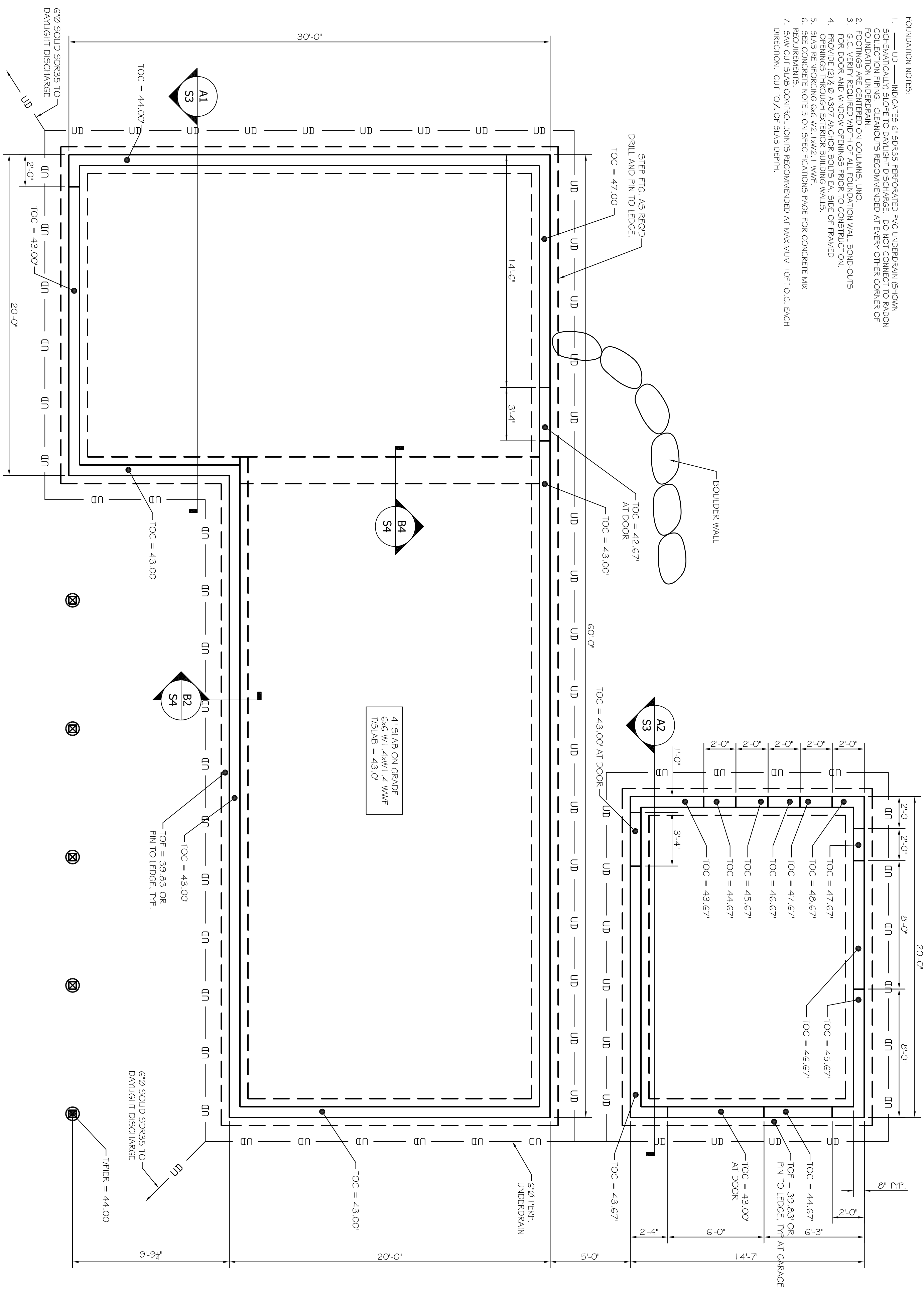


C3

C2

C3

- FOUNDATION NOTES:
1. UD INDICATES 6" SPRES PERFORATED PVC UNDERDRAN (SHOWN SCHEMATICALLY) SLOPE TO DAYLIGHT DISCHARGE. DO NOT CONNECT TO RADON FOOTING FINISH. SEE MANUALLY RECOMMENDED AT EVERY OTHER CORNER OF FOOTINGS ARE CENTERED ON COLUMNS, UNO.
 2. FOR DOOR AND WINDOW OPENINGS FROM TO CONSTRUCTION.
 3. G.C. VERIFY REQUIRED WIDTH OF ALL FOUNDATION WALL BOND CUTS.
 4. OPENINGS THROUGH EXTERIOR BUILDING WALLS.
 5. SLAB REINFORCING 6# W2 L#W2, 1 WWF.
 6. SEE CONCRETE NOTE 9 ON SPECIFICATIONS PAGE FOR CONCRETE MIX DESIGN.
 7. SAW CUT SLAB CONTROL JOINTS RECOMMENDED AT MAXIMUM 10FT O.C. EACH DIRECTION. CUT TO 1/2 OF SLAB DEPTH.



A3

A1

FOUNDATION PLAN

SCALE: 1/4" = 1'-0"

B1

PROJECT: **PENNINGTON RESIDENCE**
GREAT DIAMOND ISLAND, ME.
 FOR:
 SHEET TITLE: **FOUNDATION PLANS**
ISSUED FOR PERMITTING

THIS DRAWING, SPECIFY AND
 ELECTRONIC FILE ARE THE PROPERTY
 OF ASSOCIATED DESIGN PARTNERS, INC.
 ANY REPRODUCTION OR
 OTHER USE OF THIS DOCUMENT WITHOUT
 WRITTEN CONSENT IS PROHIBITED.

ASSOCIATED DESIGN PARTNERS INC.
 80 Leighton Road Office: (207) 878-1751
 Falmouth, Maine 04105 Fax: (207) 878-1788
 E-Mail: adp@adpengineering.com

REVISIONS		
No.	BY	DESCRIPTION

DATE: 5-18-17
 SCALE: AS NOTED
 DESIGN BY: ASW
 DRAWN BY: RSC
 FILE #17102-S1.dwg
 PROJECT NUMBER:
17102
 SHEET NO:
S1