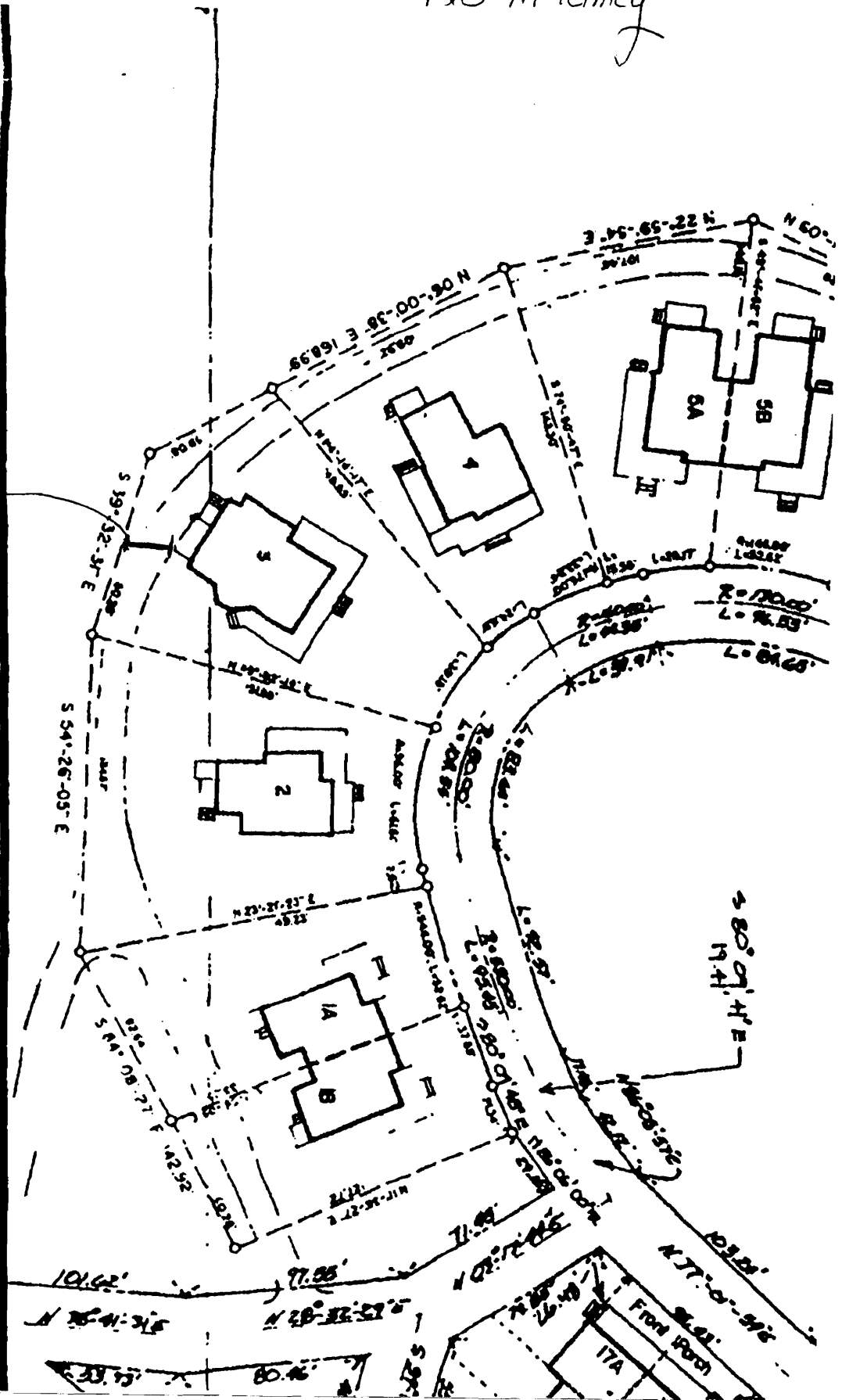


128 McKinley

37.5 feet
The property is #3.



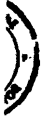
DEPT. OF BUILDING INSPECTION
CITY OF PORTLAND, ME
OCT - 3 2005
RECEIVED

STATEMENT

TO DIAMOND COVE ASSOCIATES, EXCLUSIVELY,
ERATIONS OF SHEET 4 OF "PLAN OF DIAMOND COVE."
SHEET 4A, CONFORM TO THE MASS BOARD OF
PROFESSIONAL LAND SURVEYORS CATEGORY I
STANDARDS AND ARE CORRECT TO THE BEST OF
E, INFORMATION AND BELIEF.

12/19/1990

[Signature]
JAMES D. ROBERTS
MAINE PROFESSIONAL LAND SURVEYOR #1933
LAND USE CONSULTANTS
PORTLAND, MAINE



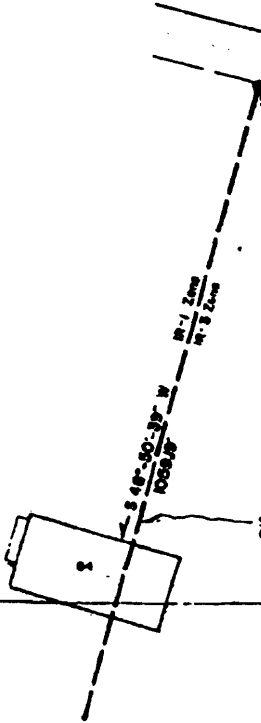
DIAMOND COVE ASSOCIATES

SEE SHEET 3 OF 7
FOR CONTINUATION OF LINE.

SEE SHEET 3 OF 7 FOR
COURSE AND DISTANCE OF LINE

MATCHLINE
SEE SHEET 3 OF 7

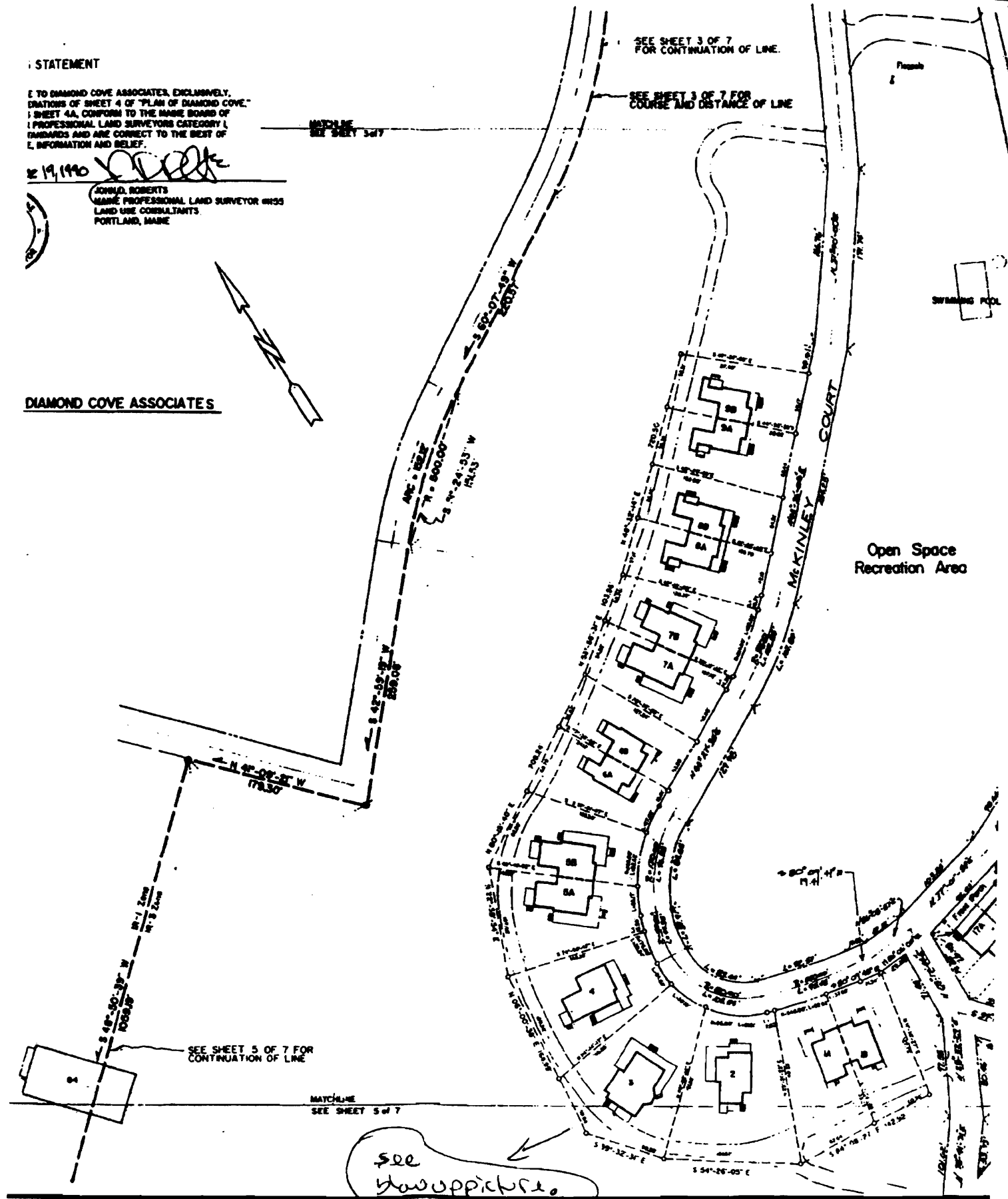
Open Space
Recreation Area



SEE SHEET 5 OF 7 FOR
CONTINUATION OF LINE

MATCHLINE
SEE SHEET 5 OF 7

*see
has picture.*





From: Scott Hanson
To: Goduti Building Company
Date: 3/5/2008 11:18:43 AM
Subject: Re: Diamond Cove

Hi James,

Typically we do not sign off on a permit until we have a cut sheet or drawing to document that the replacement will be an exact match for the original. I know you are anxious to get this approved and underway so what I will do is approve it with a condition that the new wood or fiberglass columns be an exact match to the originals and that once you have determined which you'll be using, you will give us a cut sheet (for fiberglass) or shop drawing (for wood) of the replacement to have the completed documentation for the file.

I'll get the permit signed and back down to Building Inspections today.

Scott

Scott T. Hanson
Preservation Compliance Coordinator
City of Portland
389 Congress Street
Portland, ME 04101

Phone (207) 756-8023
Fax (207) 756-8258

>>> "Goduti Building Company" <gbcbuild1@maine.rr.com> 3/4/2008 5:30:13 PM >>>
Scott,

We will be matching the columns in either the wood or fiberglass. I will likely be having the base and cap done here and they will have these as templates. Now that you have the photo, what happens to the permit process?

Thanks.

----- Original Message -----

From: "Scott Hanson" <sth@portlandmaine.gov>
To: <gbcbuild1@maine.rr.com>
Sent: Tuesday, March 04, 2008 4:06 PM
Subject: Re: Diamond Cove

> Hi James,

>

> I think I indicated before that we are open to the possibility of
> fiberglass columns if you can find a dead-on match for the wood
> originals. We'll need enough information to compare them "side by
> side". A photo of an original with dimensions noted and a
> manufacturer's cut sheet with dimensions for the proposed replacement
> would do the trick. Of course the base and capital would need to match
> as well.

>

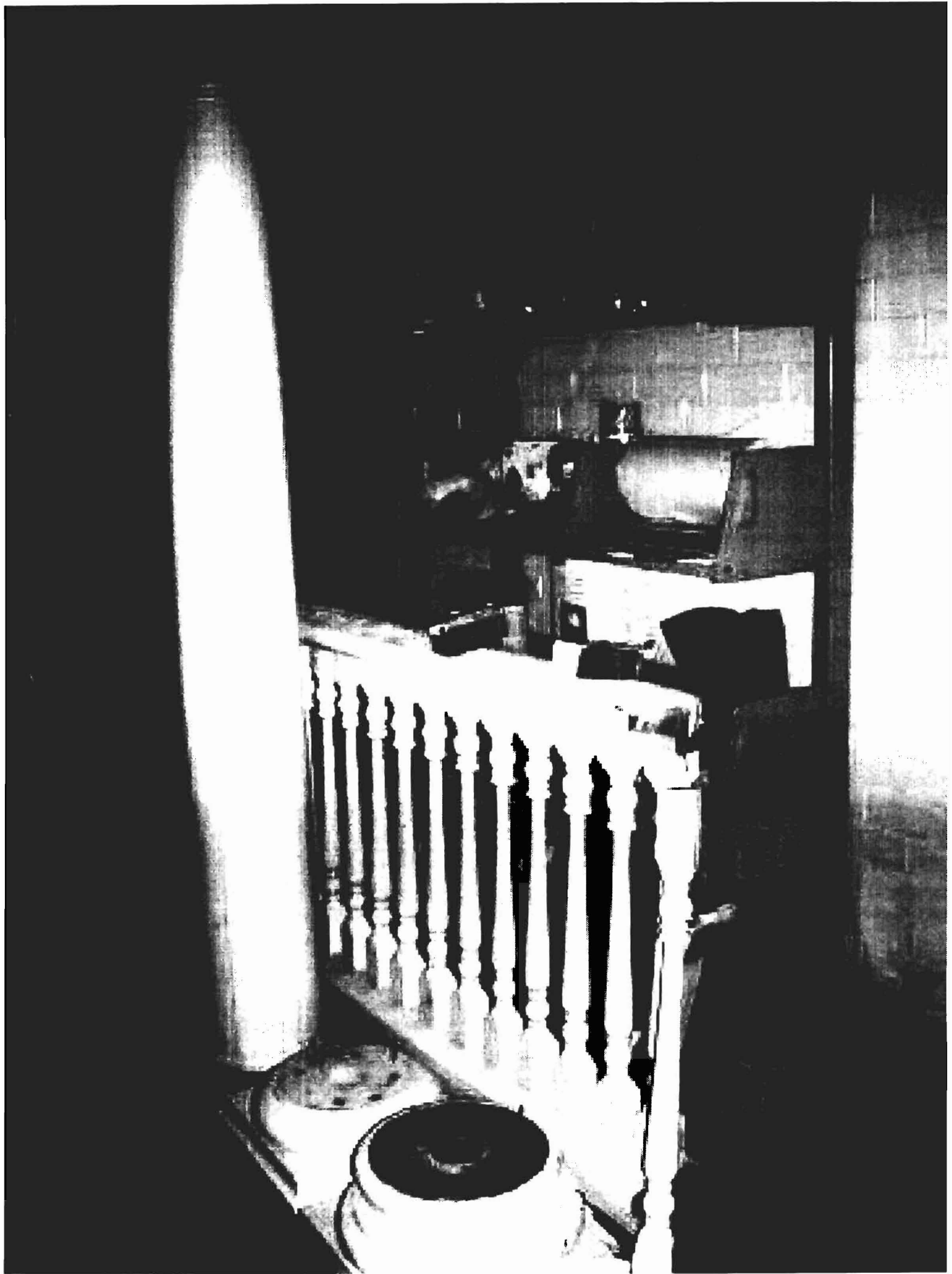
> Thanks,

>

> Scott

>

> Scott T. Hanson
> Preservation Compliance Coordinator
> City of Portland
> 389 Congress Street
> Portland, ME 04101
>
> Phone (207) 756-8023
> Fax (207) 756-8258
>
>>>> "Goduti Building Company" <gbcbuild1@maine.rr.com> 3/4/2008 3:41:12
> PM >>>
> Hi Scott,
>
> Here are the rail and post components for Great Diamond. The baluster
> leaning in front is a new one that had been made previously for some
> replacements. The top and bottom rails are 2x cedar stock with bevels.
> The post parts will be milled to match.
>
> There have been posts replaced around the circle that have plastic
> bottom and tops, do not match the existing posts, and some of these may
> be fiberglass. We intend to have the design match the photo. I know I
> can have these done in wood although I am looking into fiberglass in
> this design so we don't have to watch them split open in a few years. It
> appears that work has been done out there bypassing historic and we now
> have some products other than wood on the circle, I am hoping that
> fiberglass is an option.
>
> Could you let me know about that and how long the permit may take now.
>
> Thanks very much. James Goduti.
>
>
>





From: "Goduti Building Company" <gbcbuild1@maine.rr.com>
To: "Deb Andrews" <dga@portlandmaine.gov>
Date: 1/30/2008 6:03:31 PM
Subject: Fw: Emailing: sugarloaf 2003 100

Hi Deb,

I wanted to give you a view of what we intend to do at this house on the parade ground at Diamond Cove. We have been hired to replace the columns, caps and bases. We intend to use a Tuscan style (8 " to match existing) fiberglass column for longevity purposes.

We are also replacing the bases, rails, and spindles to match existing details and profiles. The base boxes are to made of MDO plywood. The trimmings and spindles are to milled out of mahogany. The rails are to milled out of cedar. We are not replacing the steps and rails as those were done previously. The last item we are replacing is the 1x3, fir, tongue and groove deck surface.

The rails, columns, and bases will be painted white. The deck surface will be painted grey using a color that Diamond Cove Review has established.

We do not intend to change any dimensions. We are not replacing any framing or skirting.

Please let me know what else you may require so I will be prepared when I go to apply for a permit.

Thank you. Jamies Goduti.

----- Original Message -----

From: Goduti Building Company
To: Tom Marklee
Sent: Thursday, January 24, 2008 10:48 AM
Subject: Emailing: sugarloaf 2003 100

Hi Tom,

Here is a picture of the house on Great Diamond (in the parade ground at Diamond Cove) that we are going to work on. The owner's name is Phil Gaurino. I don't have the chart number. The work scope includes replacing the columns, rails, and deck surface. Everything will match the existing and painted the same as well. Thought you could forward this to Deb to get her blessings.

I was hoping we could then do a quick permit appointment.

Let me know if this will work. Thanks very much. Jamie Goduti, Goduti Building Company, Inc.

Cell- 776-3768.

The message is ready to be sent with the following file or link attachments:
sugarloaf 2003 100

Note: To protect against computer viruses, e-mail programs may prevent sending or receiving certain types of file attachments. Check your e-mail security settings to determine how attachments are handled.

gbcbuild

From: "Goduti Building Company" <gbcbuild1@maine.rr.com>
To: "Tom Marklee" <tm@portlandmaine.gov>
Sent: Thursday, January 31, 2008 10:34 AM
Attach: sugarloaf 2003 100.jpg
Subject: Fw: Emailing: sugarloaf 2003 100

Hi Tom,

I have sent this description to Deb. We intend to leave the rail height, balluster size and spacing and column location all the same for historic reasons. We are not doing the stairs as they are okay. We are not changing any spans nor are we performing any framing. All of that is intact and adequate so I don't think I have to provide you with any framing/span details.

I am quite sure the rail height is ^{current} less than 36" and that the space between balusters ^{is less} ~~may be a little more~~ than four inches.

32"

Could you let me know what you may need from me otherwise and I will come in for the permit.

Thanks very much. Jamie Goduti.

----- Original Message -----

From:
To:
Sent: Wednesday, January 30, 2008 6:01 PM
Subject: Fw: Emailing: sugarloaf 2003 100

*There will be all pressure
treat framing for the bases. we will place solid
blocking under the columns to the brick pilasters below*

Hi Deb,

I wanted to give you a view of what we intend to do at this house on the parade ground at Diamond Cove. We have been hired to replace the columns, caps and bases. We intend to use a Tuscan style (8" to match existing) fiberglass column for longevity purposes.

We are also replacing the bases, rails, and spindles to match existing details and profiles. The base boxes are to made of MDO plywood. The trimmings and spindles are to milled out of mahogany. The rails are to milled out of cedar. We are not replacing the steps and rails as those were done previously. The last item we are replacing is the 1x3, fir, tongue and groove deck surface. *— deck surface is 40" off of grade.*

The rails, columns, and bases will be painted white. The deck surface will be painted grey using a color that Diamond Cove Review has established.

We do not intend to change any dimensions. We are not replacing any framing or skirting.

Please let me know what else you may require so I will be prepared when I go to apply for a permit.

Thank you. Jamies Goduti.

----- Original Message -----

From:
To:
Sent: Thursday, January 24, 2008 10:48 AM
Subject: Emailing: sugarloaf 2003 100

Hi Tom,

Here is a picture of the house on Great Diamond (in the parade ground at Diamond Cove) that we are going to work on. The owner's name is Phil Gaurino. I don't have the chart number. The work scope includes replacing

the columns, rails, and deck surface. Everything will match the existing and painted the same as well. Thought you could forward this to Deb to get her blessings.

I was hoping we could then do a quick permit appointment.

Let me know if this will work. Thanks very much. Jamie Goduti, Goduti Building Company, Inc.

Cell- 776-3768.

The message is ready to be sent with the following file or link attachments:
sugarloaf 2003 100

Note: To protect against computer viruses, e-mail programs may prevent sending or receiving certain types of file attachments. Check your e-mail security settings to determine how attachments are handled.