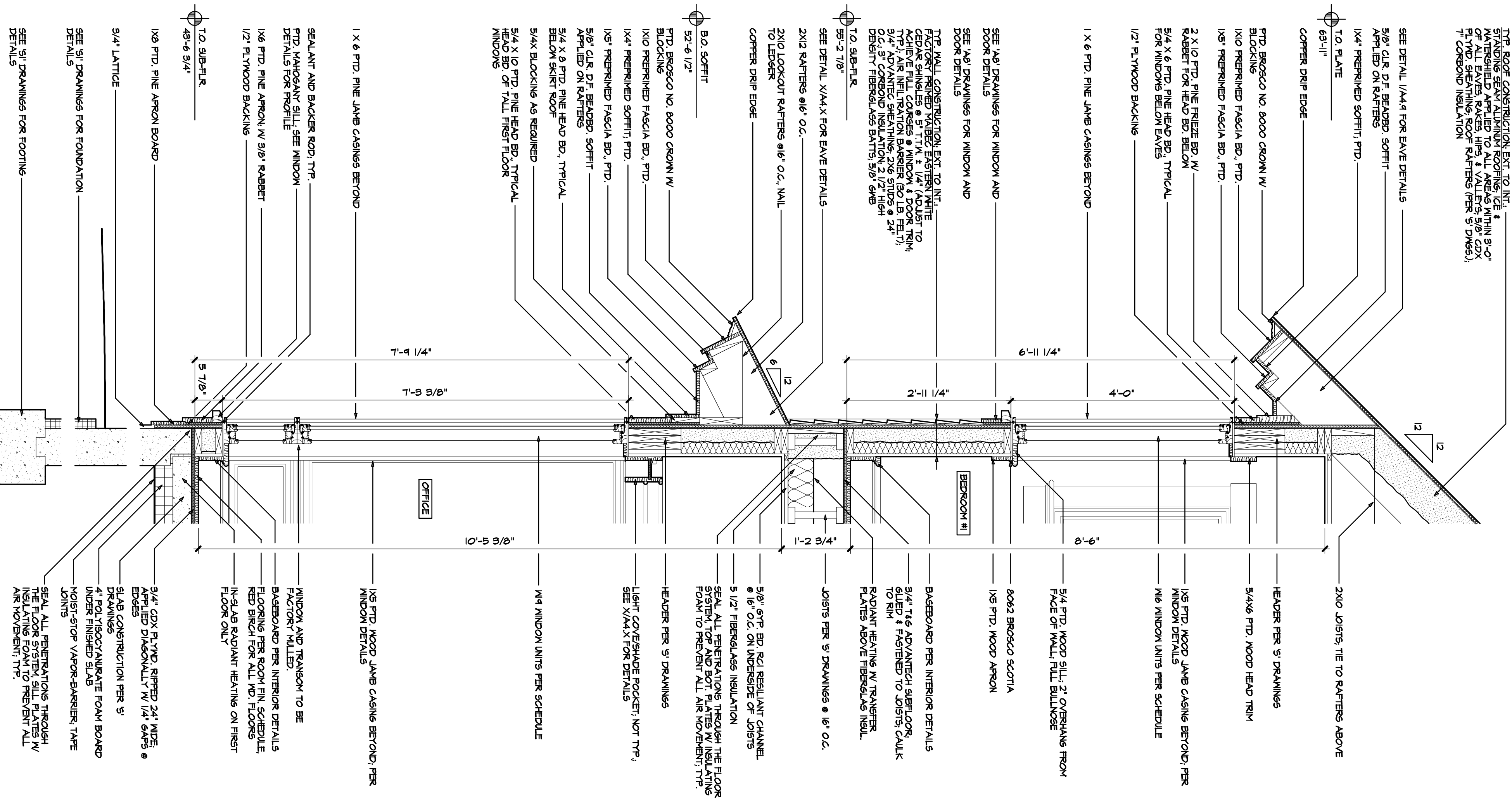


TRF ROOF CONSTRUCTION EXT. TO INT. STANDING SEAM ALUMINUM ROOFING (SEE 49-6 3/4" DETAIL) WITH 2" COX FIBERGLASS BATT INSULATION. 2" COX FIBERGLASS BATT INSULATION. TRF ROOFING SHALL BE 16 GA. GALVALUM. WITH 1/2" COX FIBERGLASS BATT INSULATION. TRF ROOFING SHALL BE 16 GA. GALVALUM. WITH 1/2" COX FIBERGLASS BATT INSULATION.



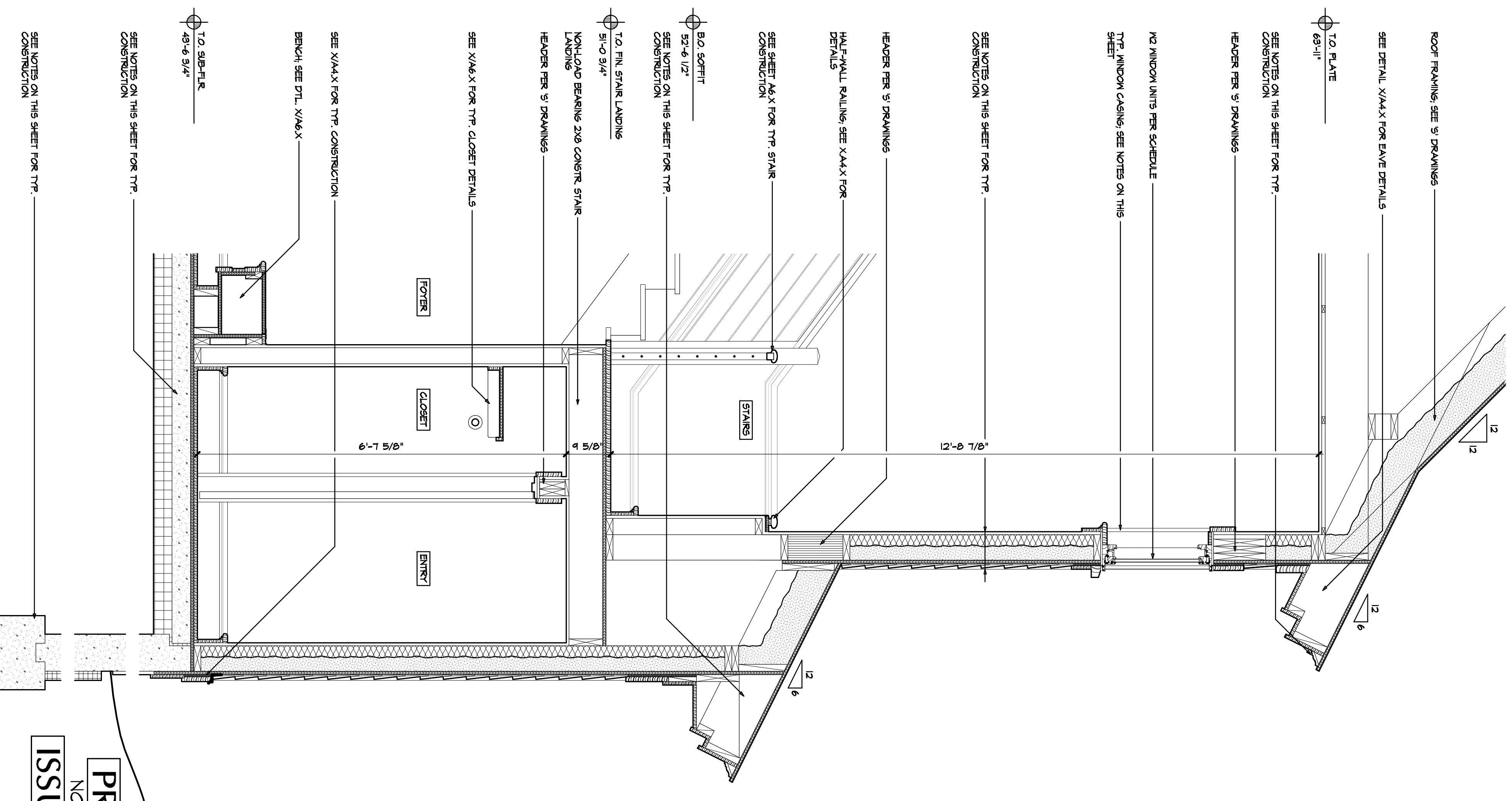
TRF WINDOW INSULATIVE VALUE
 LAMBERT CASSETTE TRIPLE GLAZED
 WINDOW WITH ARGON FILLED WINDOWS W/
 1/2\"/>

TRF SLAB FLOOR INSULATION
 POLYISOCYANURATE FOAM INSUL. (4\") = R28.0
 1/2\"/>

TRF ROOF INSULATION
 CORROD INSULATION (7\") = R44.0
 1/2\"/>

TRF WALL INSULATION
 CORROD INSULATION (8\") = R21.0
 1/2\"/>

1 WALL SECTION @ OFFICE/BEDROOM # 1
 A4.1 3/4\"/>



2 WALL SECTION @ ENTRY/STAIRS
 A4.1 3/4\"/>

PROGRESS PRINT
 NOT FOR CONSTRUCTION
 ISSUE FOR PERMIT

SCALE 3/4\"/>

SOSNIK COTTAGE
 PORTLAND MAINE
WALL SECTIONS
 SCALE: 3/4\"/>

JOHN MORRIS ARCHITECTS
 49 MECHANIC ST. P.O. BOX 250 CAMDEN, ME 04843
 207-236-8321 johnmorrisc Architects FAX 236-6391

REVISIONS

JOB NO. 1506
 1506-1 WALL SECTIONS
 DRAWN BY DANTE
 LIA 24 MAY 2016
 5/24/2016 4:33 PM

A4.1
 5/24/2016 4:33 PM