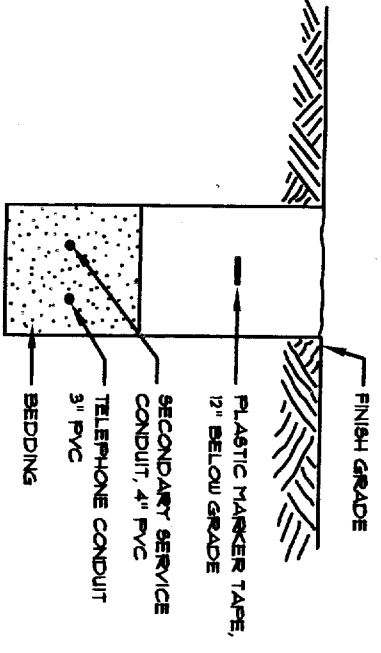


PANEL: PPI		VOLTAGE: 120/240 - 1PH		BUS RATING: 200A	
QTY	DESCRIPTION	HP	HP	HP	DESCRIPTION
1	Sub Panel	60	1	50	Range
3	"	1	0	30	"
5	Furnace	1	0	30	Oven
7	Ground Floor Lights	1	0	20	"
9	Ground Floor Power-GFI	1	0	20	Dishwasher
11	Ground Floor Bath GFI	1	0	20	Washer
13	Refrigerator	1	0	30	Dryer
15	Master Bedroom	1	0	20	"
17	Master Bath Powder Room GFI	1	0	20	Second Floor Lights
19	Kitchen/Dining Lights	1	0	20	Second Floor Power
21	Great Room/Hall Lights	1	0	20	Second Floor Bath GFI
23	Small Appliances Circuit #1	1	0	20	Exterior Lights
25	Small Appliances Circuit #2	1	0	20	
27		1	0	20	
29		1	0	20	
31		1	0	20	
33		1	0	20	
35		1	0	20	
37		1	0	20	
39		1	0	20	
41		1	0	20	

**ELECTRICAL GENERAL NOTES**

1. THE CONTRACTOR SHALL PERFORM ALL ELECTRICAL WORK IN ACCORDANCE WITH THE LATEST EDITION OF THE NATIONAL ELECTRICAL CODE, AND THE REQUIREMENTS OF THE LOCAL, COUNTY, AND STATE AGENCIES HAVING JURISDICTION. THE SCOPE OF WORK IS DESIGNATED BY THE SYMBOLS ONLY SELECTED COMPONENTS, AND WORKING DIAGRAMS INDICATE A DESIRED RESULT AND IS A SUGGESTED ARRANGEMENT OF STANDARD ITEMS TO PRODUCE A SPECIFIC RESULT. THE CONTRACTOR SHALL PROVIDE AND INSTALL A COMPLETE AND WORKING SYSTEM TO PRODUCE THE DESIRED RESULT.
2. THE CONTRACTOR SHALL INSTALL THE PANELBOARDS SUCH THAT THE DISTANCE TO THE TOPMOST OVER-CURRENT PROTECTION DEVICE OPERATING HANDLE SHALL NOT EXCEED 6'-6" AFF.
3. THE CONTRACTOR SHALL PROVIDE AND INSTALL DISCONNECT SWITCHES FOR ALL MOTORS. THEY SHALL BE HORSEPOWER RATED AND RUSED AS REQUIRED BY THE NEC.
4. THESE ELECTRICAL DRAWINGS ARE SOLUTIONS ONLY. THE ELECTRICAL DESIGN-BUILDER'S RESPONSIBILITY FOR THE PROVISION OF ALL MATERIALS AND COMPONENTS AND IDENTIFY AND SPECIFY MATERIALS AND DESIGN. THESE DRAWINGS (B-1 AND B-2) ARE TO BE USED BY OWNER, GC, AND ELECTRICIAN. DESIGN-BUILDER TO REMAIN RESPONSIBLE FOR THE DESIGN-BUILDER'S RESPONSIBILITY.



1. POWER AND COMMUNICATION CONDUITS SHALL BE PLACED IN THE SAME TRENCH WITH RANDOM SEPARATION DISTANCE.
2. BEDDING AND BACKFILL SHALL BE FREE OF ROOTS, STUMPS, AND OTHER DEBRIS.

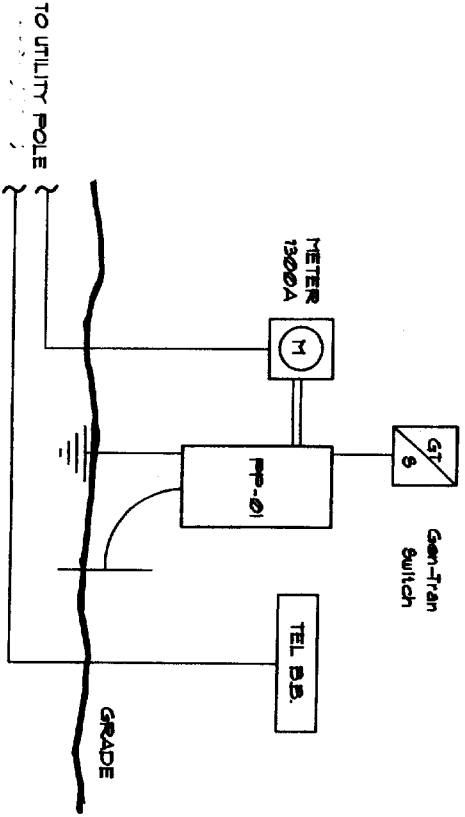
**UTILITY TRENCH DETAIL**

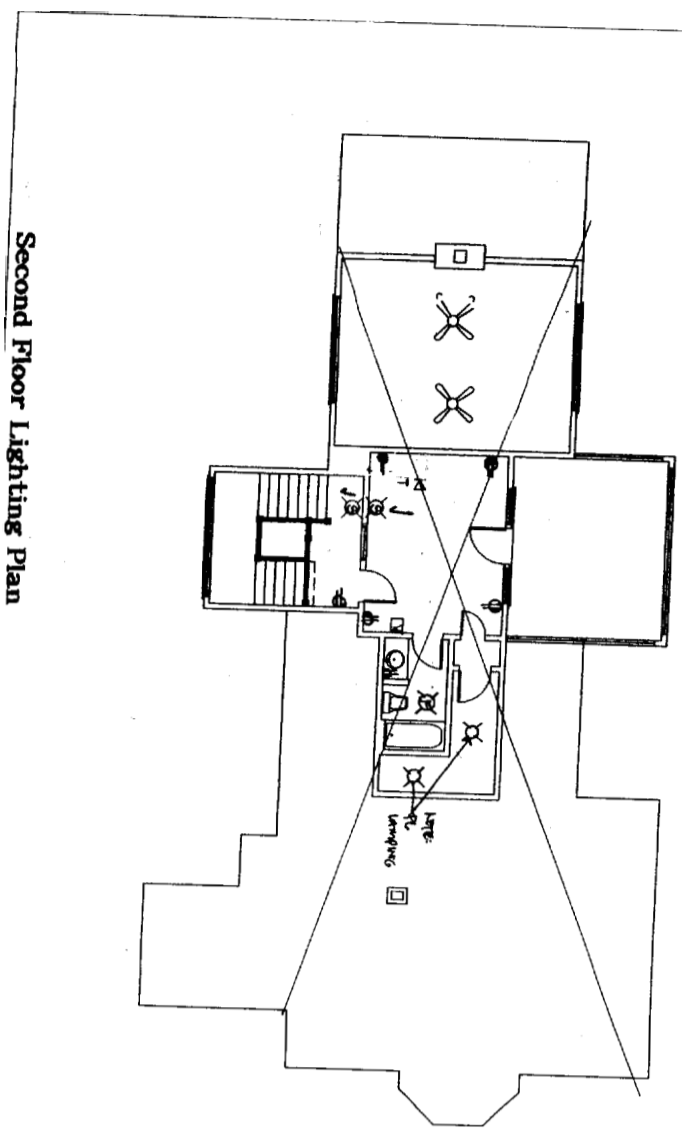
NO SCALE

**ELECTRICAL LEGEND**

- ▼ TELEPHONE OUTLET
- \$ SWITCH, TOGGLE, 20 AMP, 120VAC, SINGLE POLE, FLUSH MOUNTED AT 48" AFF EXCEPT AS NOTED.
- \$ SWITCH, TOGGLE, 20 AMP, 120VAC, THREE-WAY, FLUSH MOUNTED AT 48" AFF EXCEPT AS NOTED.
- \$ SWITCH, TOGGLE, 20 AMP, 120VAC, SINGLE POLE WITH PILOT LIGHT, FLUSH MOUNTED AT 48" AFF EXCEPT AS NOTED.
- \$ RECEPTACLE, WALL, 20 AMP, 120VAC, DUPLEX, NEMA 5-20R, FLUSH MOUNTED AT 18" AFF (24" AFF IN GARAGE) EXCEPT AS NOTED. "WP" = WEATHERPROOF.
- \$ RECEPTACLE, WALL, 20 AMP, 120VAC, DOUBLE DUPLEX NEMA 5-20R, FLUSH MOUNTED AT 18" AFF EXCEPT AS NOTED.
- \$ RECEPTACLE, WALL, 20 AMP, 120VAC, DUPLEX, GROUND FAULT INTERRUPTER, NEMA 5-20R, WITH WALL PLATE, FLUSH MOUNTED AT 18" AFF EXCEPT AS NOTED.
- ⊕ DISCONNECT SWITCH - RUSED, ONE OR TWO POLE AS LOAD REQUIRES, 250VAC, "30" INDICATES SWITCH AMPACITY, "15" INDICATES RUSE SIZE.
- ⊕ NON-REVERSING COMBINATION MOTOR STARTER, NUMBER OF POLES AND NEMA SIZE TO SUIT MOTOR SERVED, WITH HAND-OFF, AUTOMATIC SWITCH, CLOSE COUPLED OVERLOAD RELAYS, AND A COIL FOR OPERATION AT 120 VAC, IN A NEMA 1 ENCLOSURE.
- ⊕ FRACTIONAL HP, MOTOR STARTING RELAY.
- ⊕ DISCONNECT SWITCH - NON-RUSED, ONE OR TWO POLE AS LOAD REQUIRES, 250VAC, "WP" = WEATHERPROOF.
- ⊕ COM / DATA OUTLET - PROVIDED BY OWNER
- ⊕ JUNCTION BOX
- ⊕ TIME CLOCK, 40 AMP, 3-POLE, FOR EXTERIOR LIGHTING.
- ⊕ 200 AMP-POWER PANEL
- ⊕ SMOKE DETECTOR-HARD WIRED
- ⊕ METER XXXA

**POWER RISER SCHEMATIC**



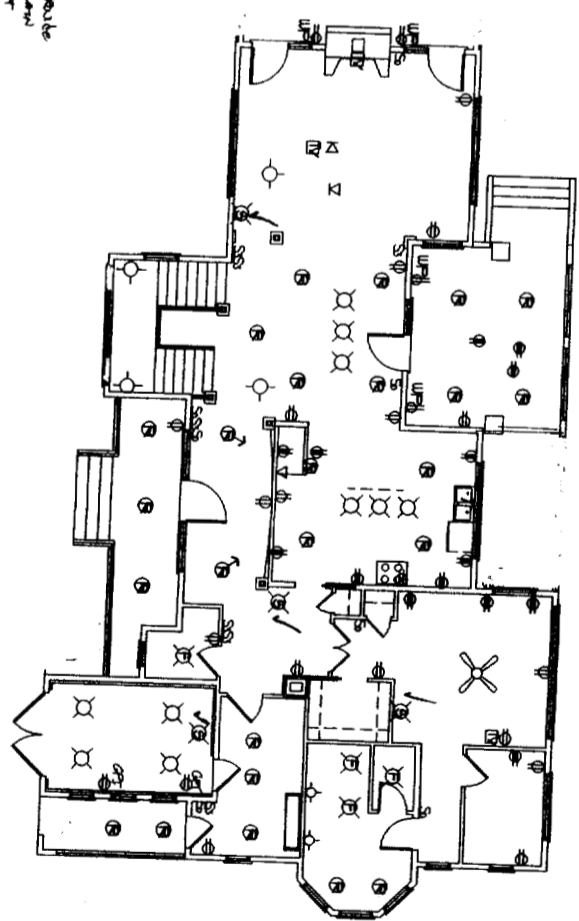


Second Floor Lighting Plan

**LIGHTING FIXTURE SCHEDULE**

TYPE	MANUFACTURER	CATALOG NO.	LAMPS	REMARKS
A				
B				
C				
D				
E				
F				
G				
H				

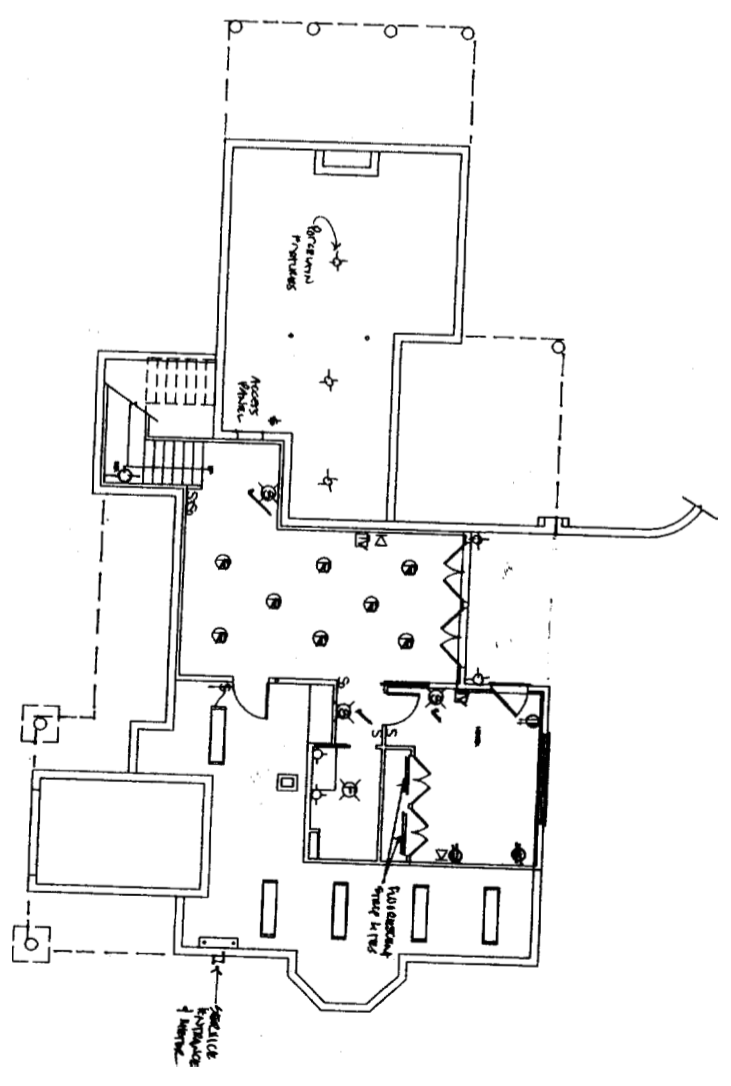
- ELECTRICAL LEGEND**
- 3 SWITCH
  - 3-WAY SWITCH
  - 4-WAY SWITCH
  - SWITCH WEATHER PROOF
  - SWITCH/MONOPLEX OUTLET
  - DINER SWITCH
  - SWITCH W/ TRIPER
  - DUP. RECEPT. WEATHER PROOF (N)
  - DUPLEX RECEPTABLE WIRED
  - QUADRUPLX RECEPTACLE
  - DUPLEX RECEPTACLE
  - 240 VOLT
  - SPECIAL PURPOSE CONNECTION
  - DUPLEX FLOOR OUTLET
  - TELEPHONE
  - CABLE TV JACK
- RECESSED 1X4 FLUORESCENT
  - OVERHEAD FIXTURE
  - RECESSED FIXTURE
  - WALL FIXTURE
  - FAN/LIGHT CORB.
  - SMOKE DETECTOR
  - PORCELAIN FIXTURE
  - DISCONNECT SWITCH
  - CEILING FAN
  - THERMOSTAT
  - BELL/PUSH BUTTON
  - BELL



First Floor Lighting Plan - (Schematic) - Fixtures TO BE DISAPPEAR

NOTE: Blue composite to provide this service (+) between fixtures (switching) or main loop ARTC

By Design - Davis Environmental Corporation & Associates



First Floor Lighting Plan - Schematic

<p>DATE: 8-8-04          NUMBER: 100207          DRAWN BY: BJB          CHECKED BY: WIP</p>	<p>DRAWINGS THIS SHEET</p> <p><b>SCHEMATIC LIGHTING PLAN</b></p>	<p><b>BATES RESIDENCE</b></p> <p>GREAT DIAMOND ISLAND, MAINE</p>	<p>REVISIONS</p> <table border="1" style="width: 100%; border-collapse: collapse;"> <thead> <tr> <th>NO.</th> <th>DATE</th> <th>DESCRIPTION</th> </tr> </thead> <tbody> <tr> <td> </td> <td> </td> <td> </td> </tr> </tbody> </table>	NO.	DATE	DESCRIPTION				<p>152 Fogg Road Scarborough, ME 04074          Colander Island Architects          Phone (207) 885-9133 or (207) 885-5534</p>
NO.	DATE	DESCRIPTION								