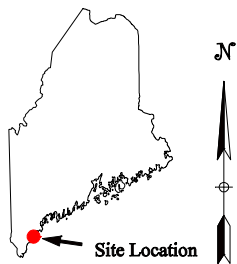



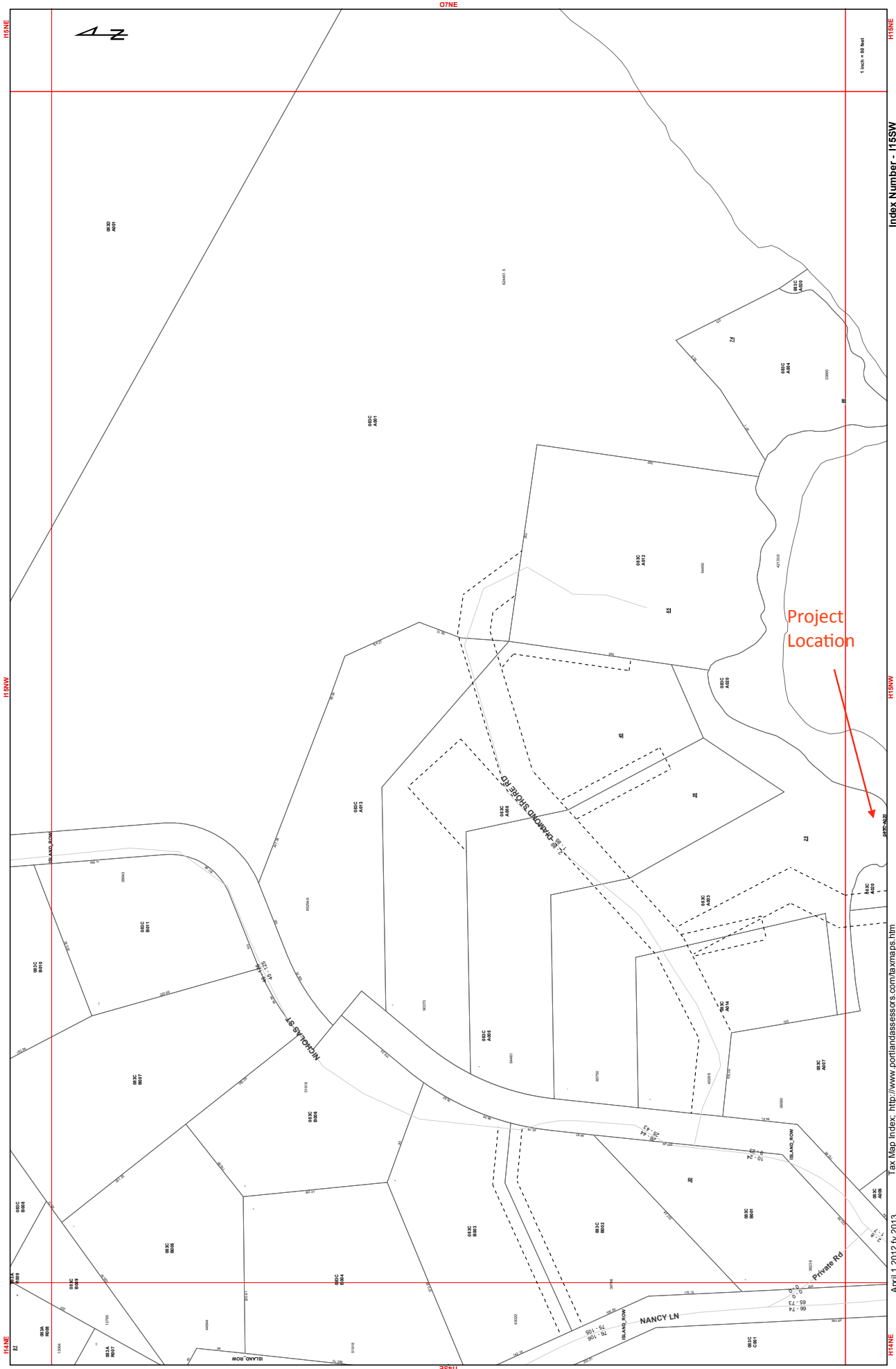
Location Map for the Glickman Property, 25 Diamond Shore Road, Great Diamond Island, Maine.



Directions: From the Ferry Landing on Great Diamond Island, walk down Nicholas Street. Take a right onto Diamond Shore Road. Subject property is the first dock on your right.



Notes:	
Maine Atlas & Gazetteer Map 3 (Section D-2) 43.672395°N 70.197232°W	
 ECO-ANALYSTS, INC. ENVIRONMENTAL CONSULTANTS	
P.O. BOX 224 BATH, MAINE 04530 (207) 837-2199 Fax (207) 386-0451 timforrester@comcast.net	
Date: 4/19/2016	DWG Name: Glickman Site Location



H44NE

H16NW

H44NE

O7NE

H44SE

H16SE

H16NW

H44NE



1 inch = 50 feet

Project Location

Index Number - 115SW

Tax Map Index: <http://www.portlandassessors.com/taxmaps.htm>

April 1 2012 by 2013