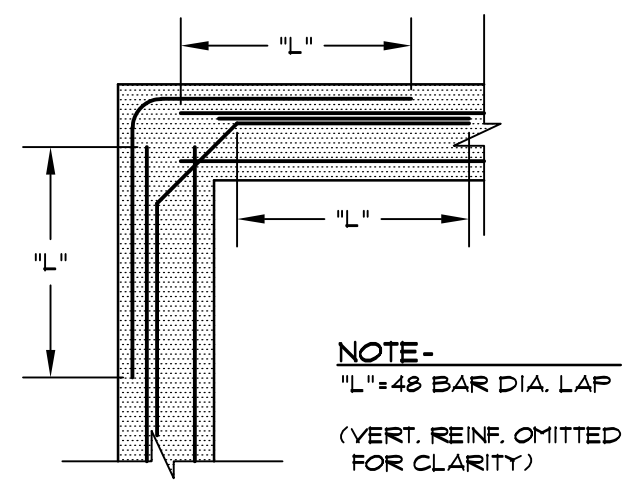
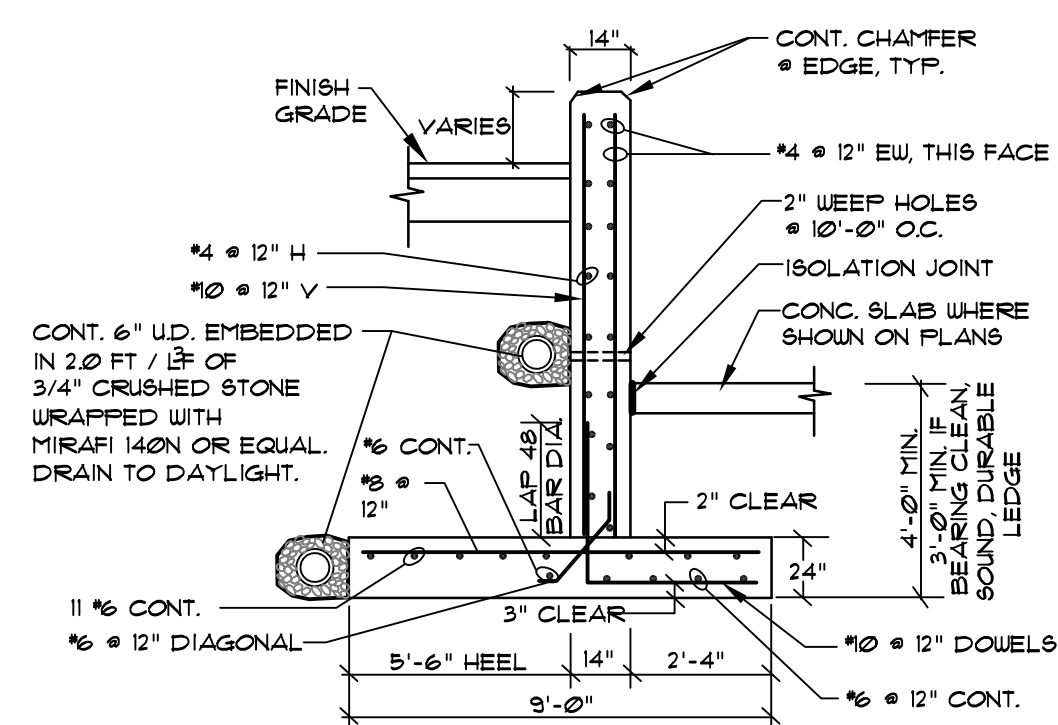


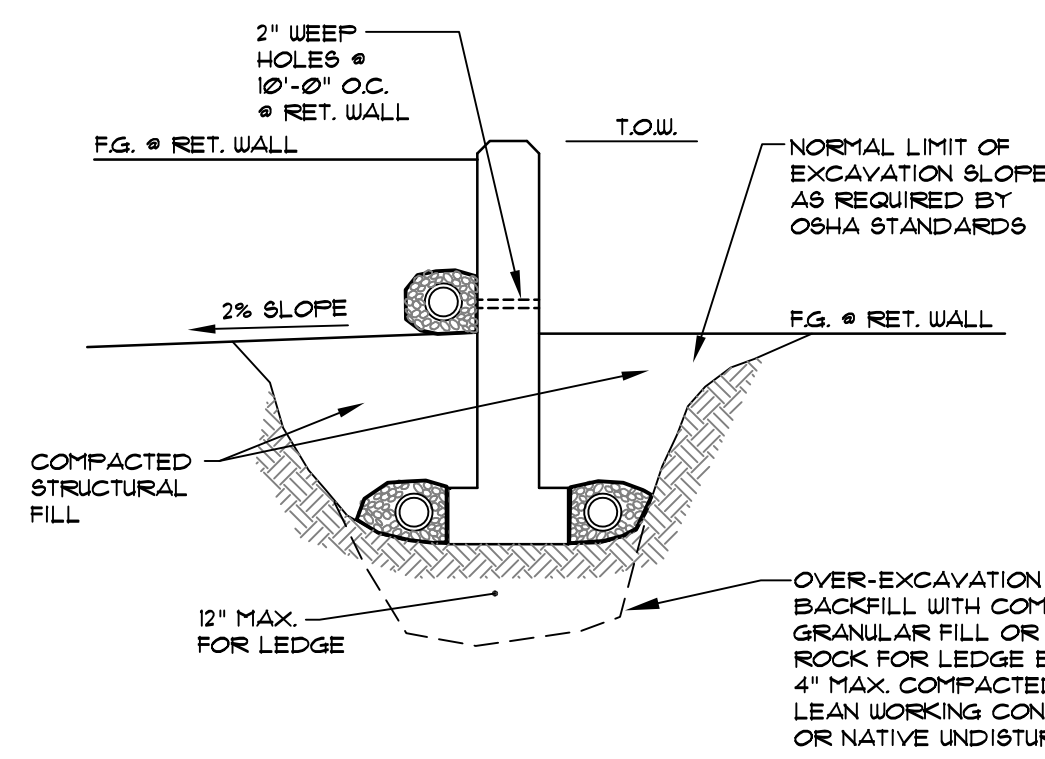
**1 STEEL BEAM BEARING DETAIL @ RETAINING/FOUNDATION WALL**  
NOT TO SCALE



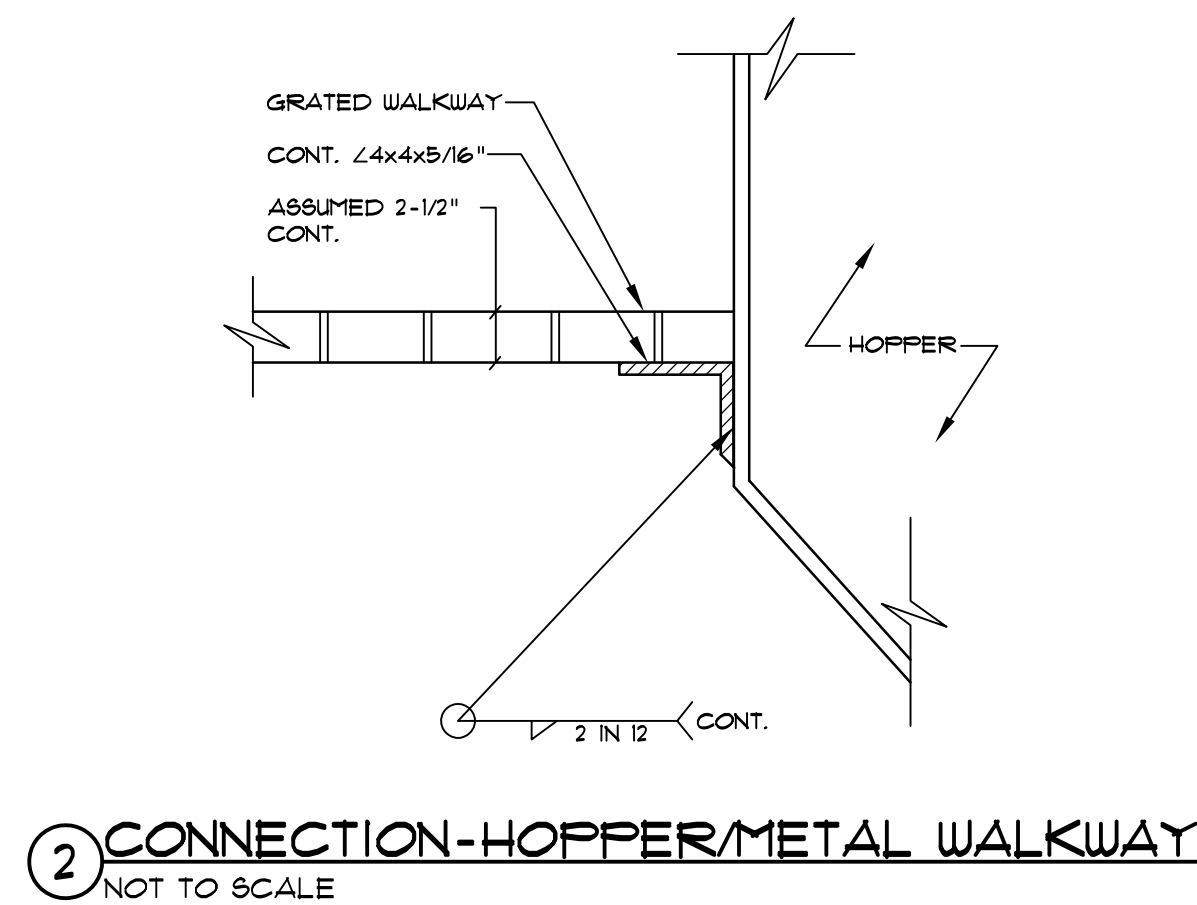
**3 CORNER REINFORCING DETAIL**  
NOT TO SCALE



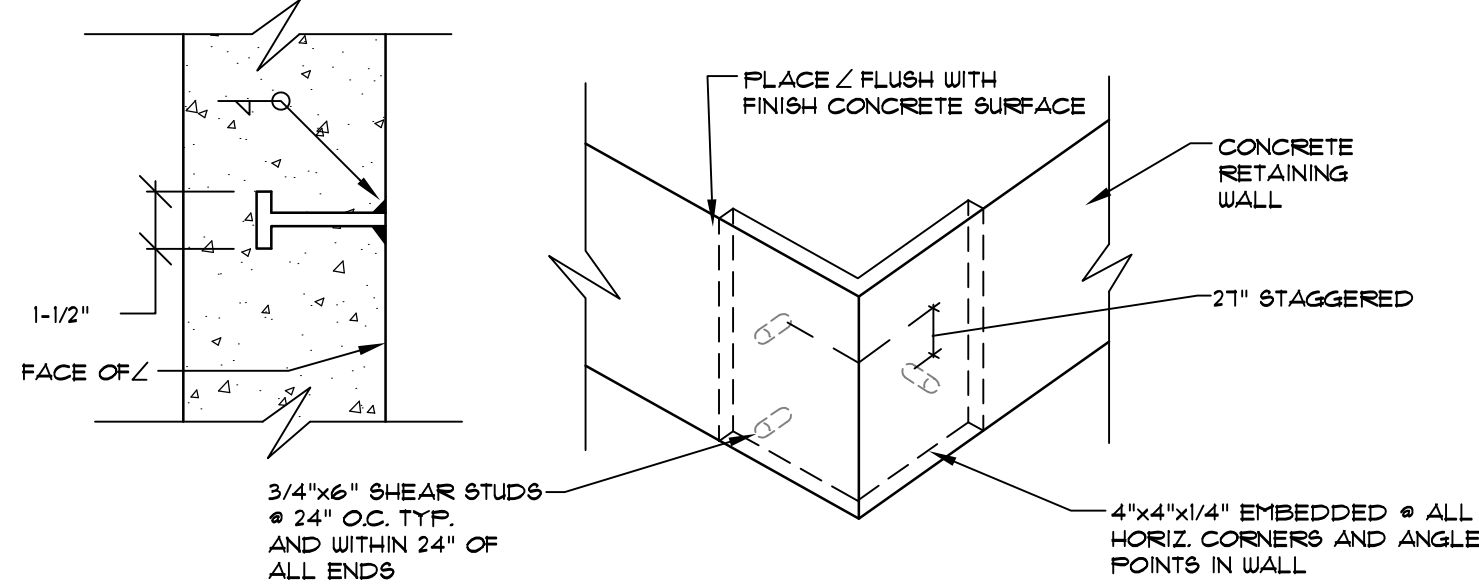
**5 TYPICAL RETAINING WALL REINFORCING DETAIL**  
NOT TO SCALE



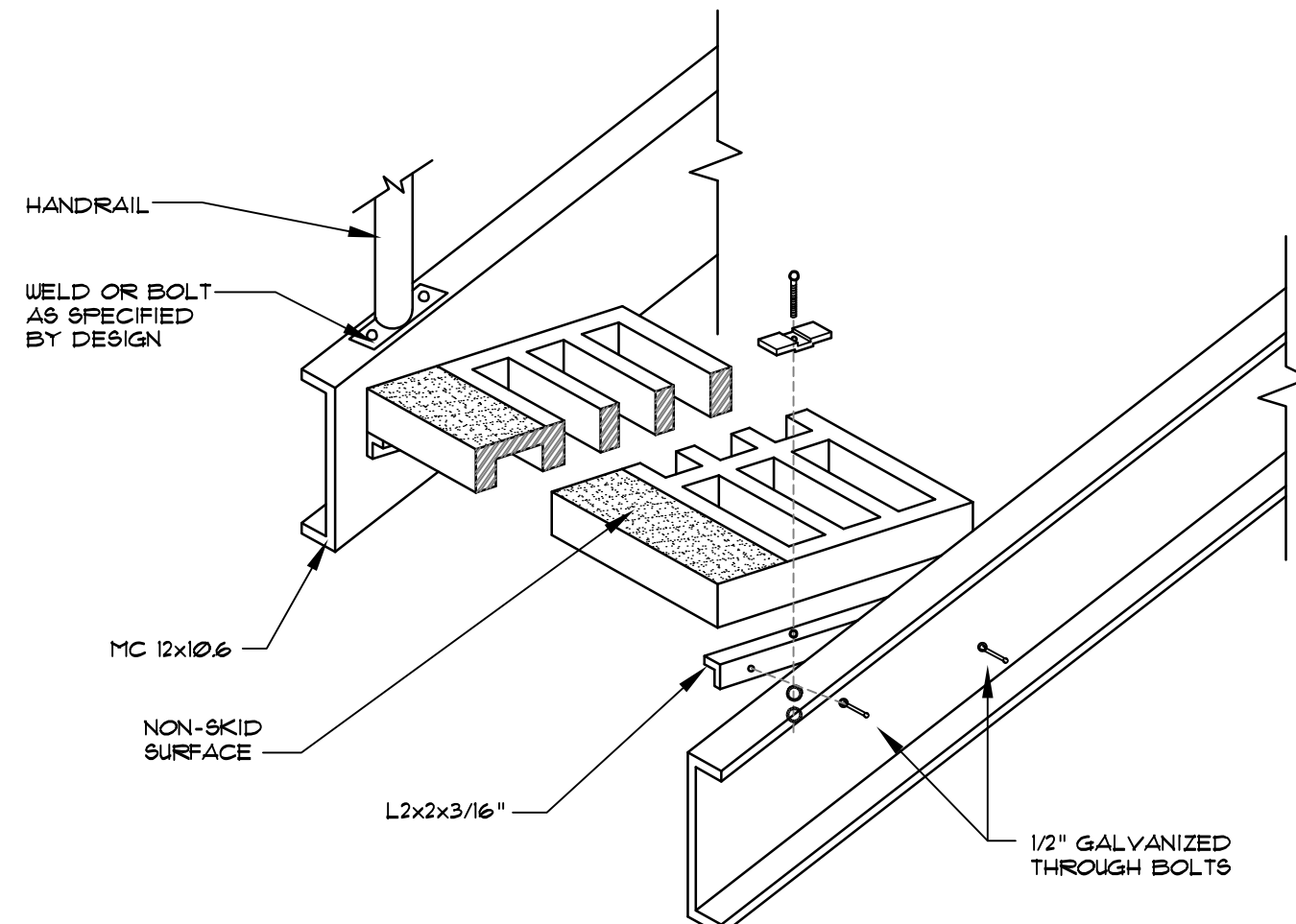
**6 TYPICAL RETAINING WALL/FOUNDATION EARTHWORK DETAIL**  
NOT TO SCALE



**2 CONNECTION-HOPPER/METAL WALKWAY**  
NOT TO SCALE

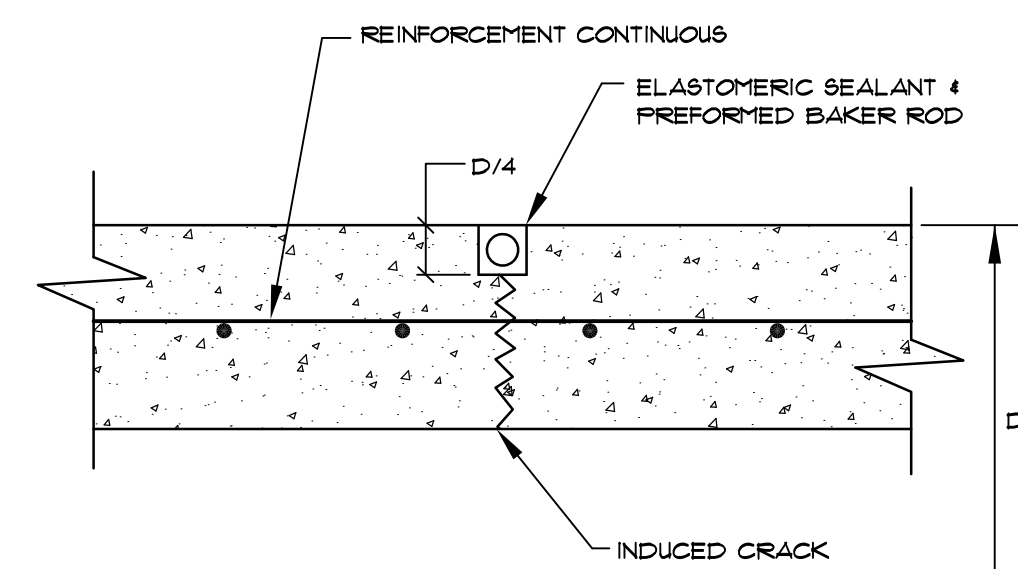


**4 EMBEDMENT DETAIL CORNER & ANGLE PROTECTOR**  
NOT TO SCALE

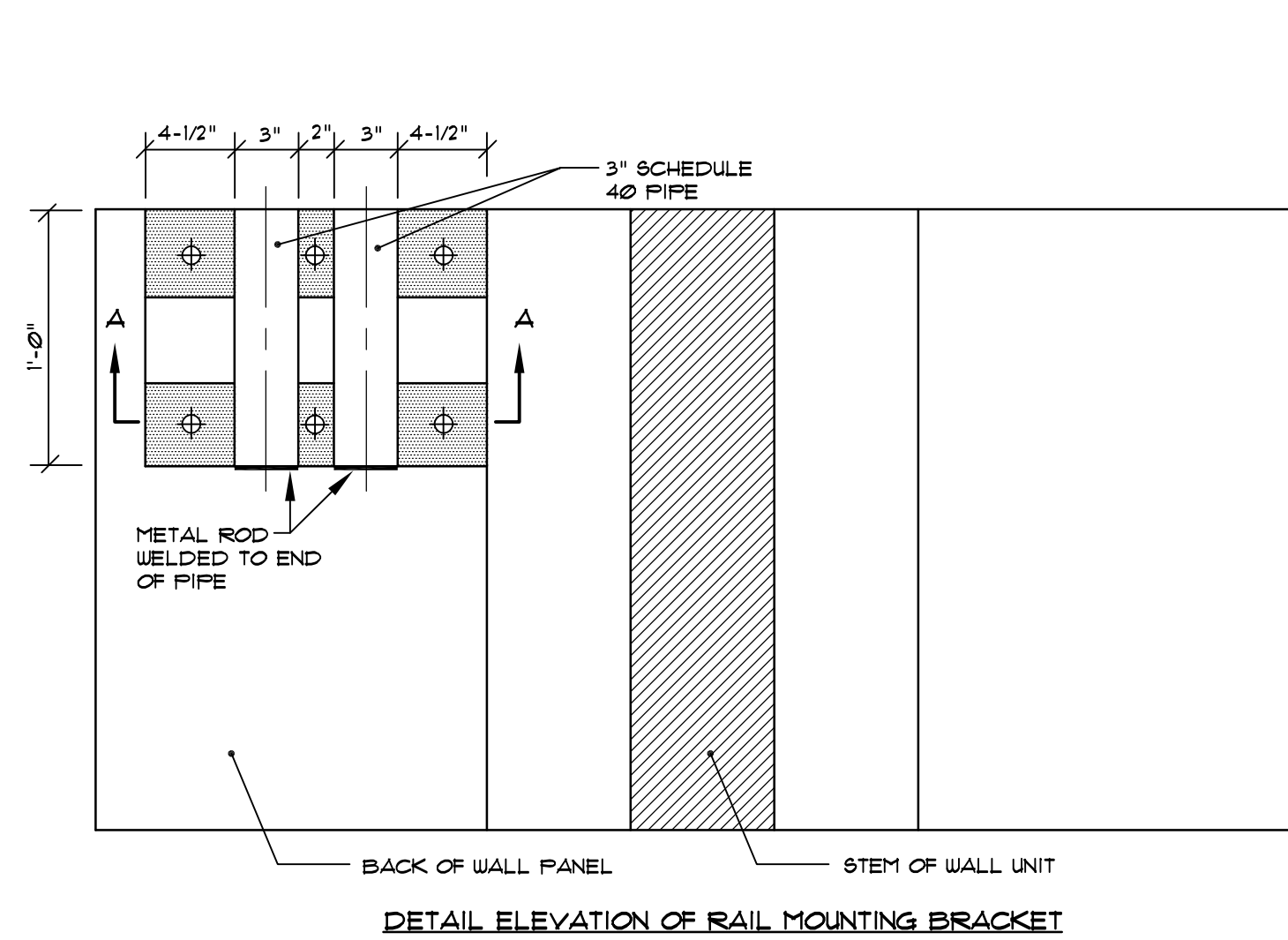


- NOTES:**
- TREAD SIZE = 30-1/2\"/>
  - STAIR RISE = 8-1/2\"/>
  - GALVANIZED STEEL OR ALUMINUM SKID-RESISTANT TREADS, DESIGN LOAD = 450 psf.
  - PROVIDE HAND RAIL EACH SIDE TO MEET NFOA 101 AND OSHA STANDARDS. HANDRAIL SHALL BE GALVANIZED OR ALUMINUM.
  - SUBMIT DESIGN-BUILD DRAWINGS OF STAIR AND HANDRAIL DESIGN FOR ENGINEERS APPROVAL. COMPLY WITH APPLICABLE CODES. HANDRAIL SHALL BE OF INTEGRAL CONSTRUCTION WITH STAIR SYSTEM.

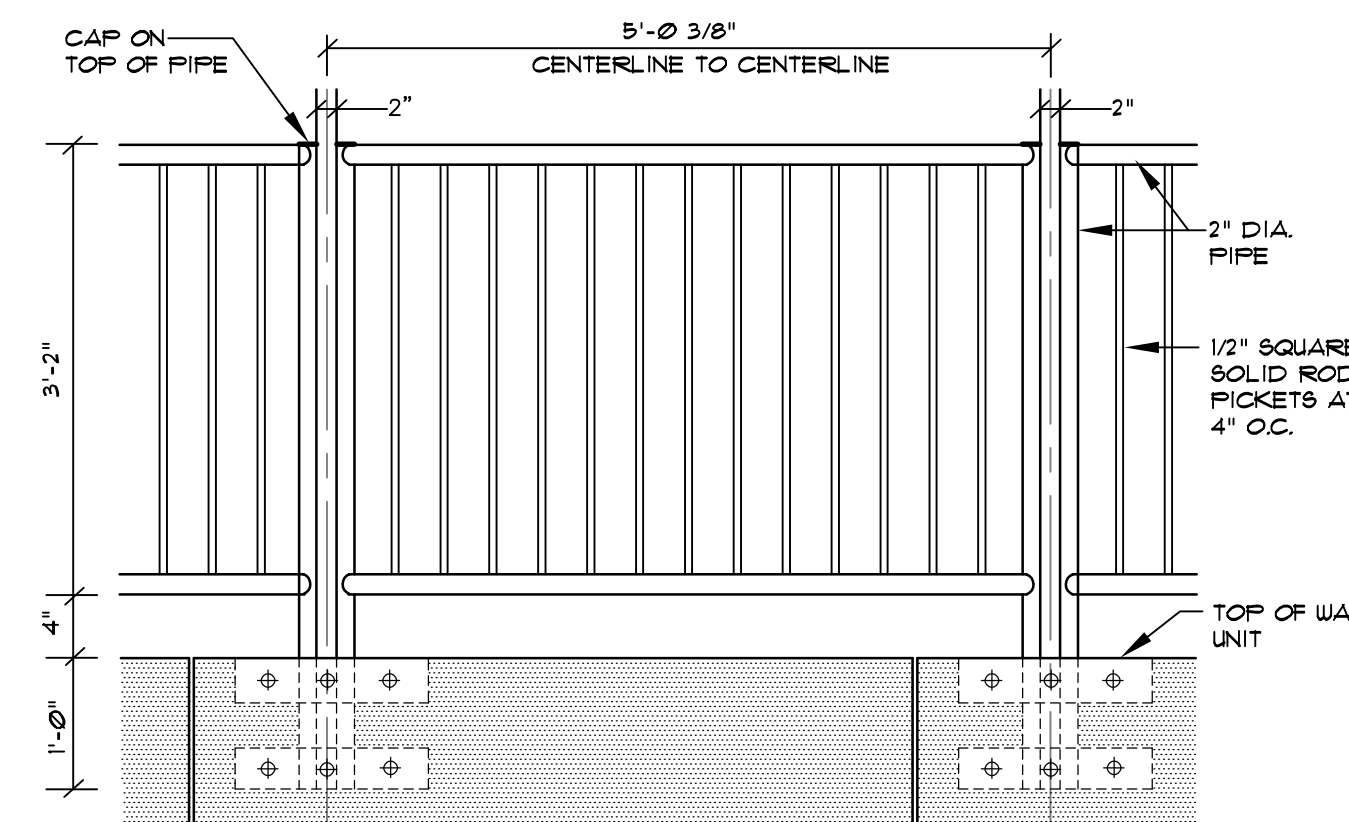
**3 TYPICAL STAIR CONSTRUCTION**  
NOT TO SCALE



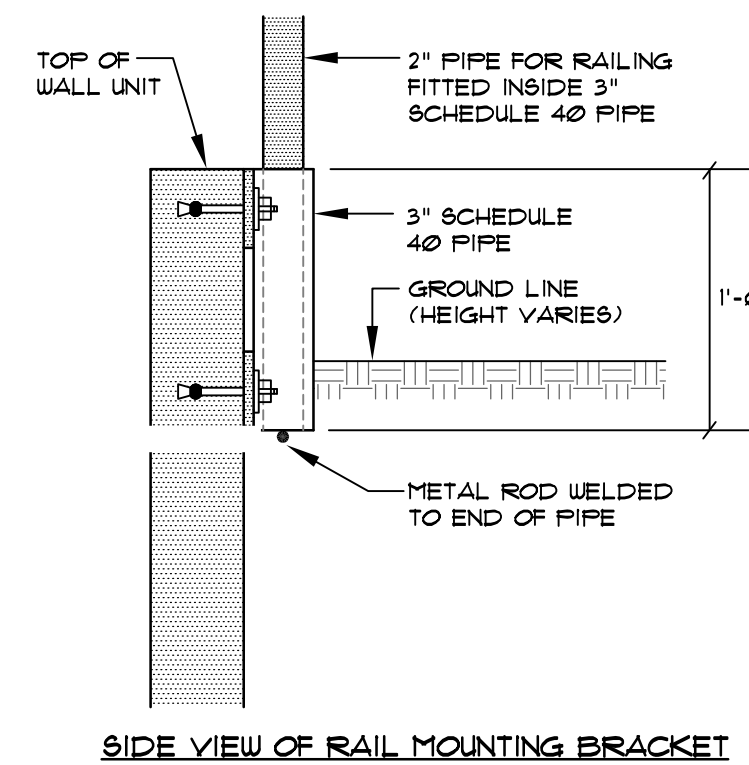
**4 CONTRACTION/CONTROL JOINT**  
NOT TO SCALE



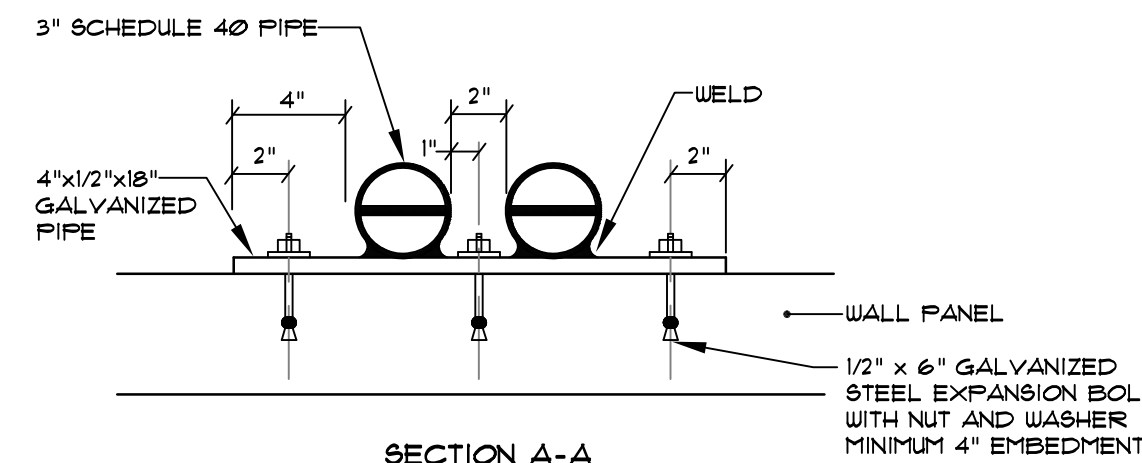
**DETAIL ELEVATION OF RAIL MOUNTING BRACKET**



**ELEVATION OF TYPICAL RAILING**



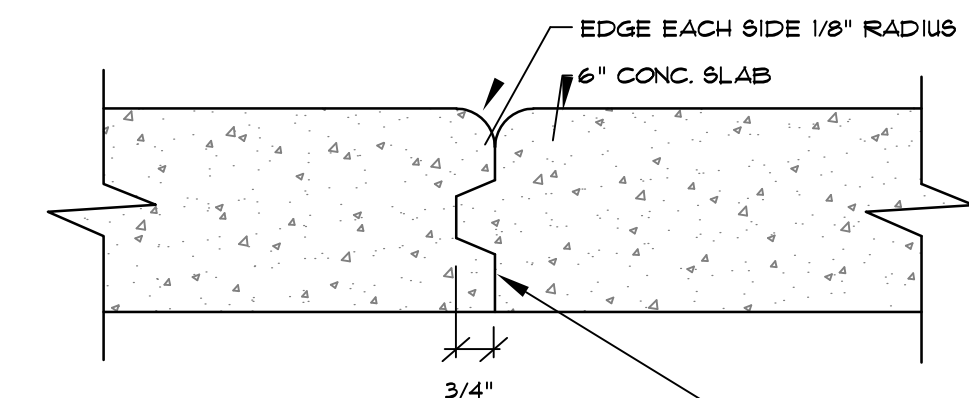
**SIDE VIEW OF RAIL MOUNTING BRACKET**



**SECTION A-A**

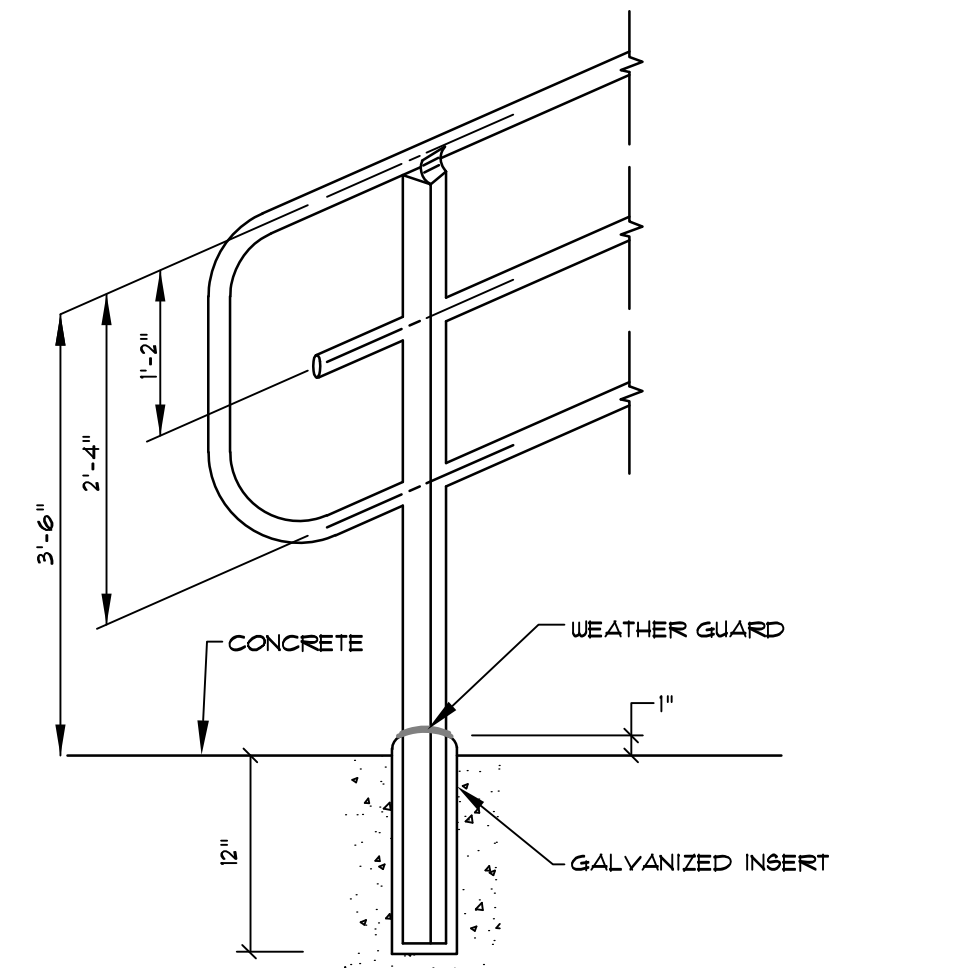
NOTE: RAILING TO BE PROVIDED BY CITY OF PORTLAND. CONTRACTOR IS RESPONSIBLE FOR INSTALLATION OF RAILING INCLUDING ALL COMPONENTS & MOUNTING.

**1 REMOVABLE SAFETY RAILING @ PRECAST WALL**  
NOT TO SCALE



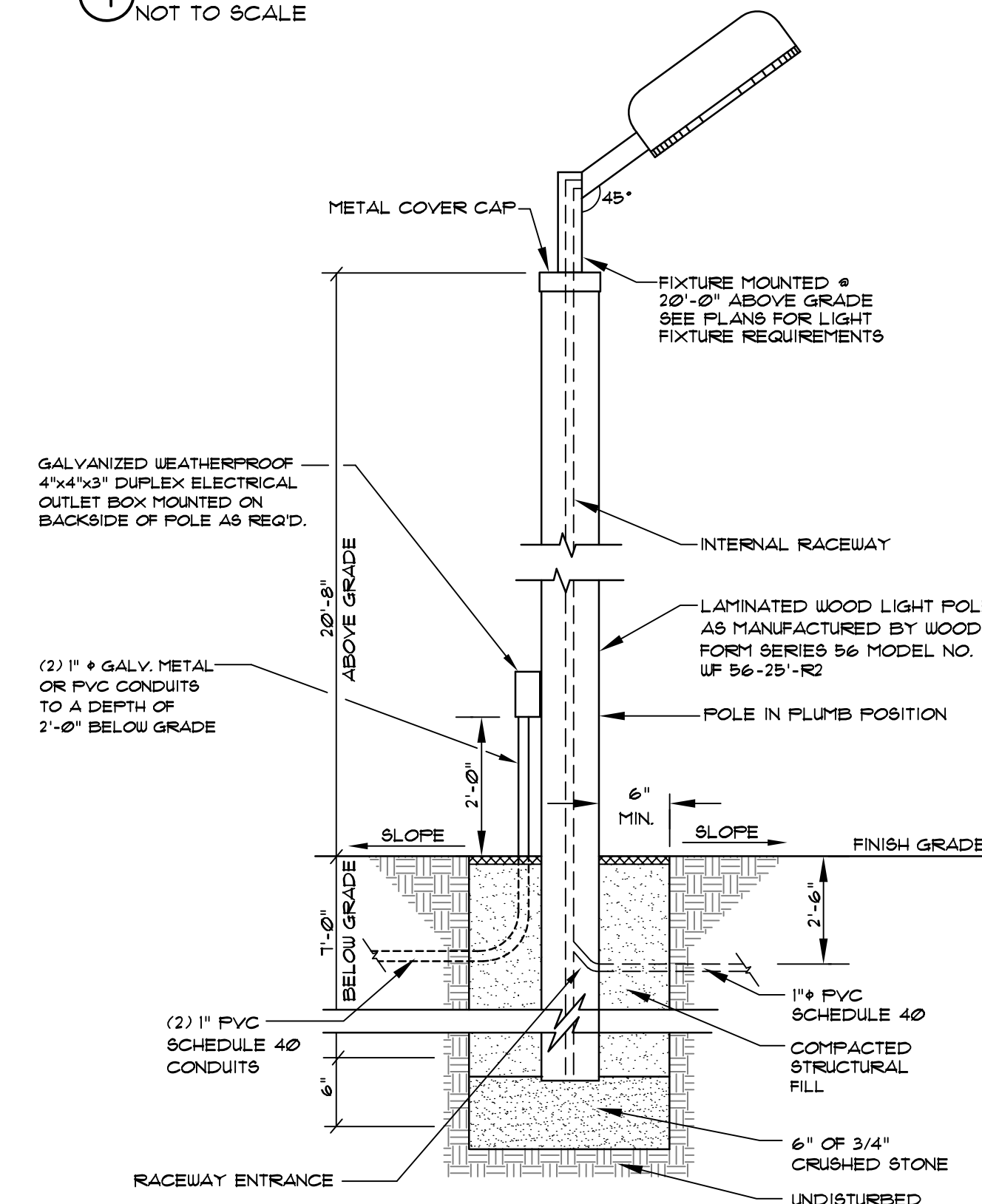
NOTE: CONT. HORIZONTAL REINFORCEMENT NOT SHOWN FOR CLARITY. AP 3/4\"/>

**9 CONSTRUCTION JOINT**  
NOT TO SCALE



- NOTES:**
- METAL RAILING SHALL BE DESIGNED/BUILT BY THE CITY OF PORTLAND AND SHALL BE GALVANIZED OR ALUMINUM TYPE RAILING. 42\"/>
  - RAILING SHALL BE CONSTRUCTED AND INSTALLED IN REMOVABLE SECTIONS NOT EXCEEDING 4\"/>
  - PROVIDE SHOP DRAWINGS FOR ENGINEER APPROVAL PRIOR TO CONSTRUCTION.
  - PAINT RAILING SYSTEM WITH 1 COAT PRIMER AND 2 COATS FINISH PAINT. (COLOR TO BE REFLECTIVE YELLOW)
  - CONTRACTOR SHALL BE RESPONSIBLE FOR INSTALLATION AND INSERTS/CONNECTIONS @ RETAINING WALLS. CONTRACTOR SHALL COORDINATE WITH CITY OF PORTLAND. THIS WORK SHALL BE CONSIDERED INCIDENTAL TO PAY ITEM 113.10-METAL WALKWAY.

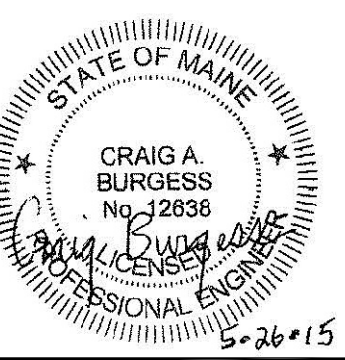
**7 REMOVABLE SAFETY RAILING @ HOPPER/COMPACTOR**  
NOT TO SCALE



**WOOD LIGHT POLE BASE**

NOTE: FACE WIDEST SIDE OF POLE (6-3/4\"/>

**WOOD LIGHT POLE BASE**  
NOT TO SCALE



REV.	DATE	BY	STATUS
05-26-15			RESUBMITTED TO CITY
10-29-14			REVISED TO SHOW LIGHTING FIXTURE
09-5-14			SUBMITTED TO DEP
08-18-14			ISSUED FOR PRELIMINARY REVIEW
02-05-14			ISSUED FOR CLIENT REVIEW

THIS PLAN SHALL NOT BE MODIFIED WITHOUT WRITTEN PERMISSION FROM SEBAGO TECHNICS, INC. ANY ALTERATIONS AUTHORIZED OR OTHERWISE, SHALL BE AT THE USER'S SOLE RISK AND WITHOUT LIABILITY TO SEBAGO TECHNICS, INC.

**SEBAGO TECHNICS**  
WWW.SEBAGOTECHNICS.COM  
75 John Roberts Rd., Suite 1A, South Portland, ME 04106  
Tel: 207-262-2100

PROJECT NO. 09405

DESIGN	CHKD	DRAWN
OAM	OAM	JAR

**DETAILS OF:**  
GREAT DIAMOND ISLAND TRANSFER AND RECYCLING FACILITY  
GREAT DIAMOND ISLAND  
PORTLAND, MAINE

**FOR:**  
CITY OF PORTLAND  
55 PORTLAND STREET  
PORTLAND, MAINE 04101

DATE	SCALE
01-29-14	NTS