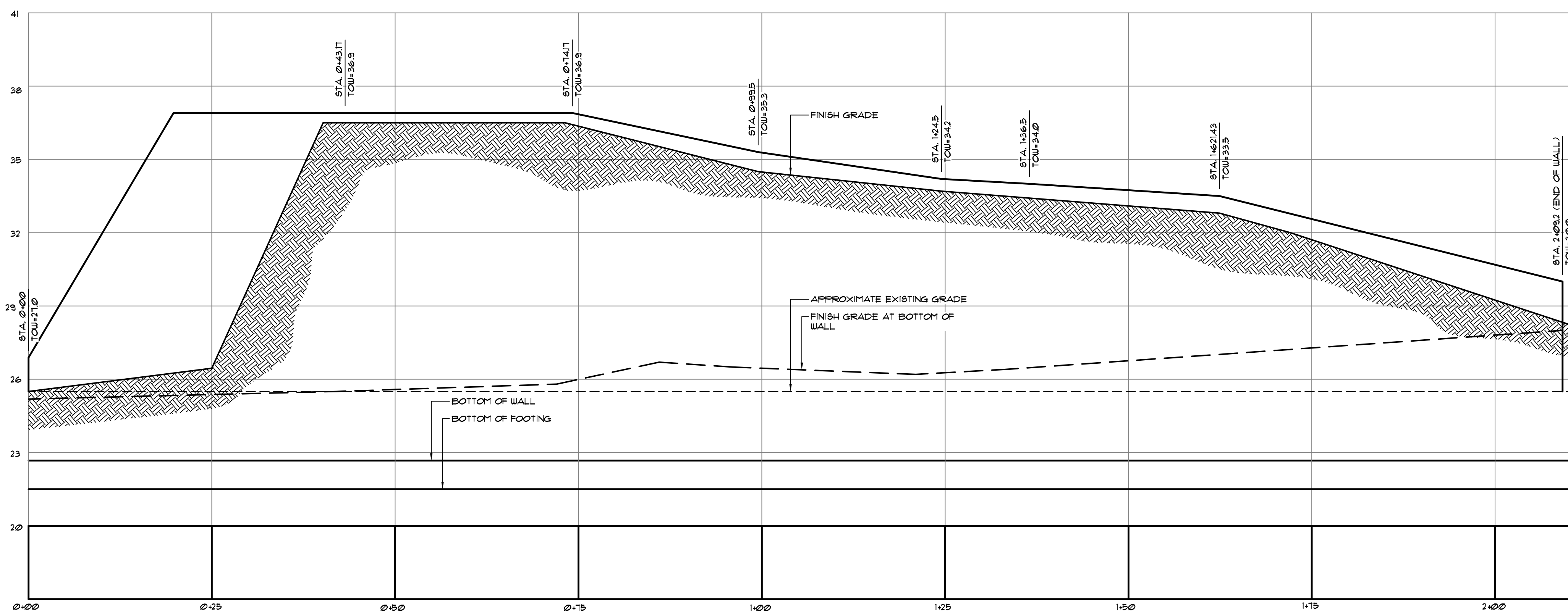
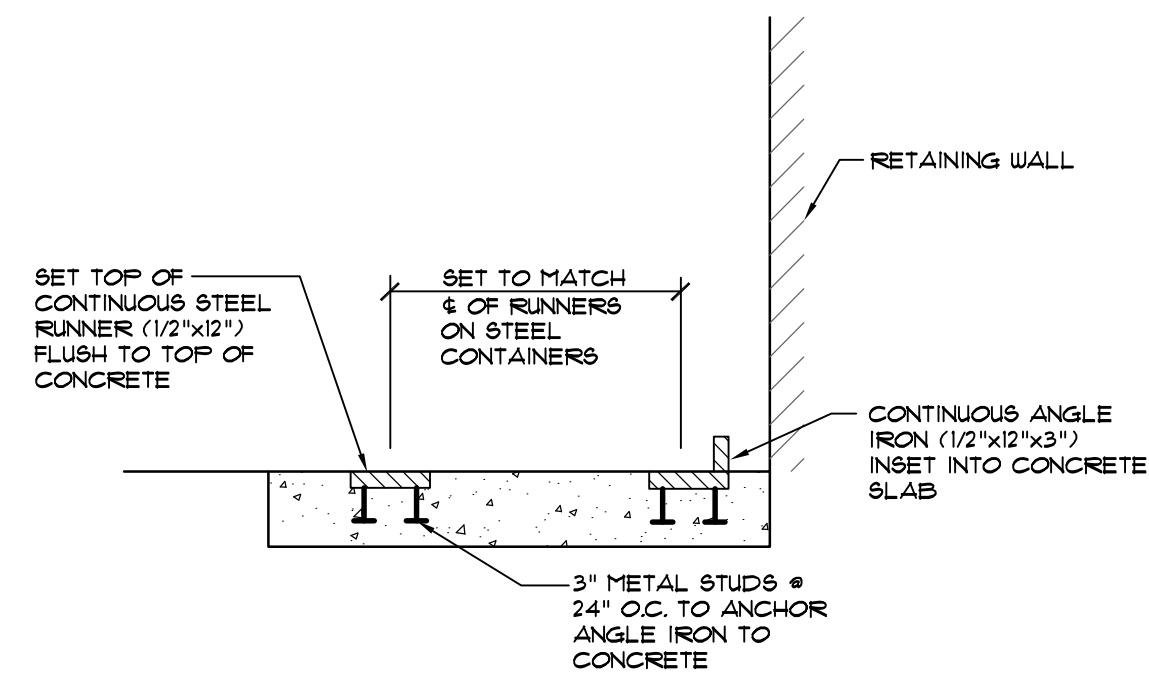


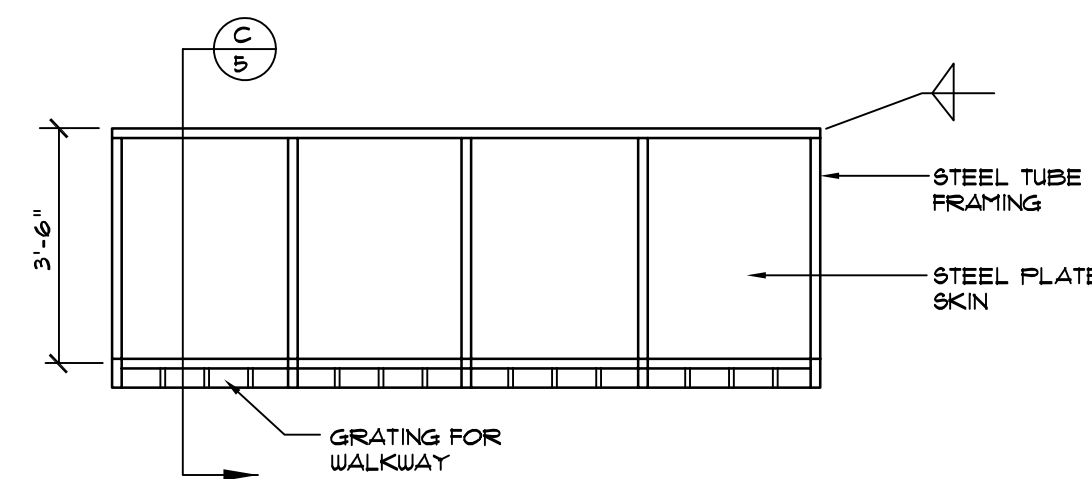
PLAN-RETAINING WALL
SCALE: 1"=10'



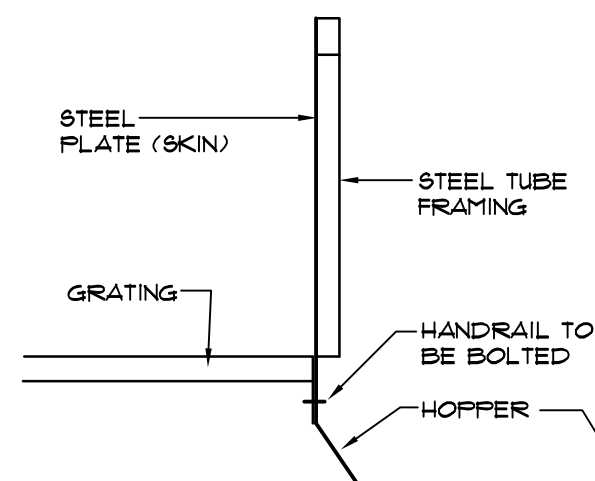
PROFILE-RETAINING WALL
SCALE: HORIZ. 1"=10'
VERT. 1"=3'



A SECTION @ ANGLE IRON RUNNERS
NOT TO SCALE



B SCHEMATIC HANDRAIL ELEVATION @ HOPPER
NOT TO SCALE



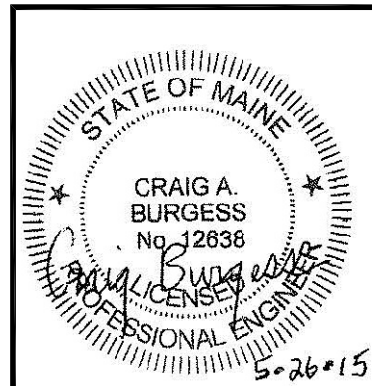
C SCHEMATIC HANDRAIL SECTION
NOT TO SCALE

RETAINING WALL / CONCRETE NOTES

- PROVIDE CONTRACTION CONTROL JOINTS @ 15' INTERVALS ALONG CAST-IN-PLACE RETAINING WALL AND WITHIN 2' OF ANGLE POINTS, CORNERS AND AT ALL CHANGES IN FOOTING ELEVATIONS.
- CONTRACTOR SHALL GRADE SLABS TO DRAIN. FINAL ELEVATIONS SHALL BE COORDINATED AND APPROVED BY ENGINEER.
- CHAMFER ALL EXPOSED EDGES AND COAT ALL CONCRETE SURFACES WITH 2 APPLICATIONS OF PENETRATING SEALANT.
- PROVIDE AND INSTALL ISOLATION JOINTS AT ALL INTERSECTION POINTS BETWEEN VERT. AND HORIZ. CONCRETE FACES.
- PROVIDE POSITIVE FOUNDATION DRAIN OUTLETS AT LOCATIONS APPROVED BY ENGINEER.
- SUBMIT DESIGN-BUILD DRAWINGS FOR PRECAST RETAINING WALL CONSTRUCTION SEALED BY A MAINE REGISTERED PROFESSIONAL ENGINEER.
- REINFORCING STEEL SHALL NOT BE GRADE 60, ASTM 615 NEW BARS.
- CONCRETE:
 - SLABS:
 - 28 DAY COMPRESSIVE STRENGTH, 4000 psi
 - MAX. AGGREGATE SIZE: 3/4"
 - AIR CONTENT: 6%, 1% BY VOLUME
 - FOOTING & RETAINING WALLS (CAST-IN-PLACE):
 - 28 DAY COMPRESSIVE STRENGTH, 3000 psi
 - MAX. AGGREGATE SIZE: 1 1/2"
 - AIR CONTENT: 5%, 1% BY VOLUME
 - PRECAST RETAINING WALL:
 - 28 DAY COMPRESSIVE STRENGTH, 4000 psi
 - INSTALL CONCRETE LEVELING PAD PER MANUFACTURER'S REQUIREMENTS
 - SUBMIT ENGINEERED PLANS FOR APPROVAL BY OWNER
 - INSTALL WITH 6" CURB STOP AT EDGE OF WALL
- REFERENCE CONTRACT SPECIFICATIONS AND DOCUMENTS FOR ADDITIONAL REQUIREMENTS.
- REMOVABLE SAFETY RAILING AT PRECAST RETAINING WALL TO BE PROVIDED BY CITY OF PORTLAND PUBLIC WORKS. CONTRACTOR IS RESPONSIBLE FOR INSTALLATION OF SAFETY RAILING, (DRILLING WALL, ATTACHING MOUNTING BRACKET AND INSTALLING RAILING. CONTRACTOR SHALL COORDINATE WITH ENGINEER.

HOPPER CONSTRUCTION NOTES

- HOPPER AND HANDRAIL (SEE SCHEMATIC THIS SHEET) TO BE DESIGN-BUILD BY CONTRACTOR AND PREPARED BY A MAINE LICENSED PROFESSIONAL ENGINEER.
- CONTRACTOR SHALL VERIFY EXACT DIMENSIONS AND CONNECTION REQUIREMENTS TO COMPACTOR UNIT. VERIFIED DIMENSIONS SHALL BE INCORPORATED IN DESIGN AND SHOP DRAWINGS SUPPLIED BY CONTRACTOR.
- STRUCTURAL STEEL COMPONENTS AND PLATES TO CONFORM TO ASTM A 36.
- WELDING ELECTRODES SHALL BE E70XX.
- BOLTS FOR CONNECTING STRUCTURAL STEEL MEMBERS TO BE ASTM A 325.
- ALL STRUCTURAL COMPONENTS SHALL BE WELDED TO DEVELOP STIFFENED UNIT. CONTRACTOR SHALL SUBMIT SHOP DRAWINGS FOR ENGINEER'S APPROVAL.
- HOPPER SHALL BE CONSTRUCTED OF 3/16" PLATE STEEL WITH 1/4" THICK PLATE STEEL STIFFENERS SPACED NOT MORE THAN 18" O.C. ON ALL EXTERIOR SIDES OF HOPPER.
- HOPPER DESIGN SHALL INCORPORATE IMPACT LOADING DUE TO DEPOSITION OF RUBBISH AND LOADING/UNLOADING OPERATIONS.
- CONTRACTOR SHALL SUBMIT FOR ENGINEER'S APPROVAL HOPPER DESIGN PLANS WITH INTEGRATED COMPONENTS AND SHALL BE DESIGNED AND SEALED BY A MAINE REGISTERED PROFESSIONAL ENGINEER.



REV.	BY:	DATE:	ISSUED FOR:
D	OAM	05-26-15	RESUBMITTED TO CITY
C	OAM	09-5-14	SUBMITTED TO DEP
B	OAM	08-18-14	ISSUED FOR PRELIMINARY REVIEW
A	OAM	02-05-14	ISSUED FOR CLIENT REVIEW

THIS PLAN SHALL NOT BE MODIFIED WITHOUT WRITTEN PERMISSION FROM SEBAGO TECHNICS, INC. ANY ALTERATIONS AUTHORIZED OR OTHERWISE, SHALL BE AT THE USER'S SOLE RISK AND WITHOUT LIABILITY TO SEBAGO TECHNICS, INC.

SEBAGO TECHNICS
WWW.SEAGOTECHNICS.COM
75 John Roberts Rd. - Suite 1A - 250 Goddard Rd. - Suite B
South Portland, ME 04106
Tel: 207-282-2100
Tel: 207-783-5858

PROJECT NO. 09405
FIELD BOOK DESIGN CHKD DRAWN
OAM OAM JAR

PLAN AND PROFILE: RETAINING WALL
OF:
GREAT DIAMOND ISLAND TRANSFER AND RECYCLING FACILITY
GREAT DIAMOND ISLAND
PORTLAND, MAINE
FOR:
CITY OF PORTLAND
55 PORTLAND STREET
PORTLAND, MAINE 04101

DATE	SCALE
01-29-14	NTS