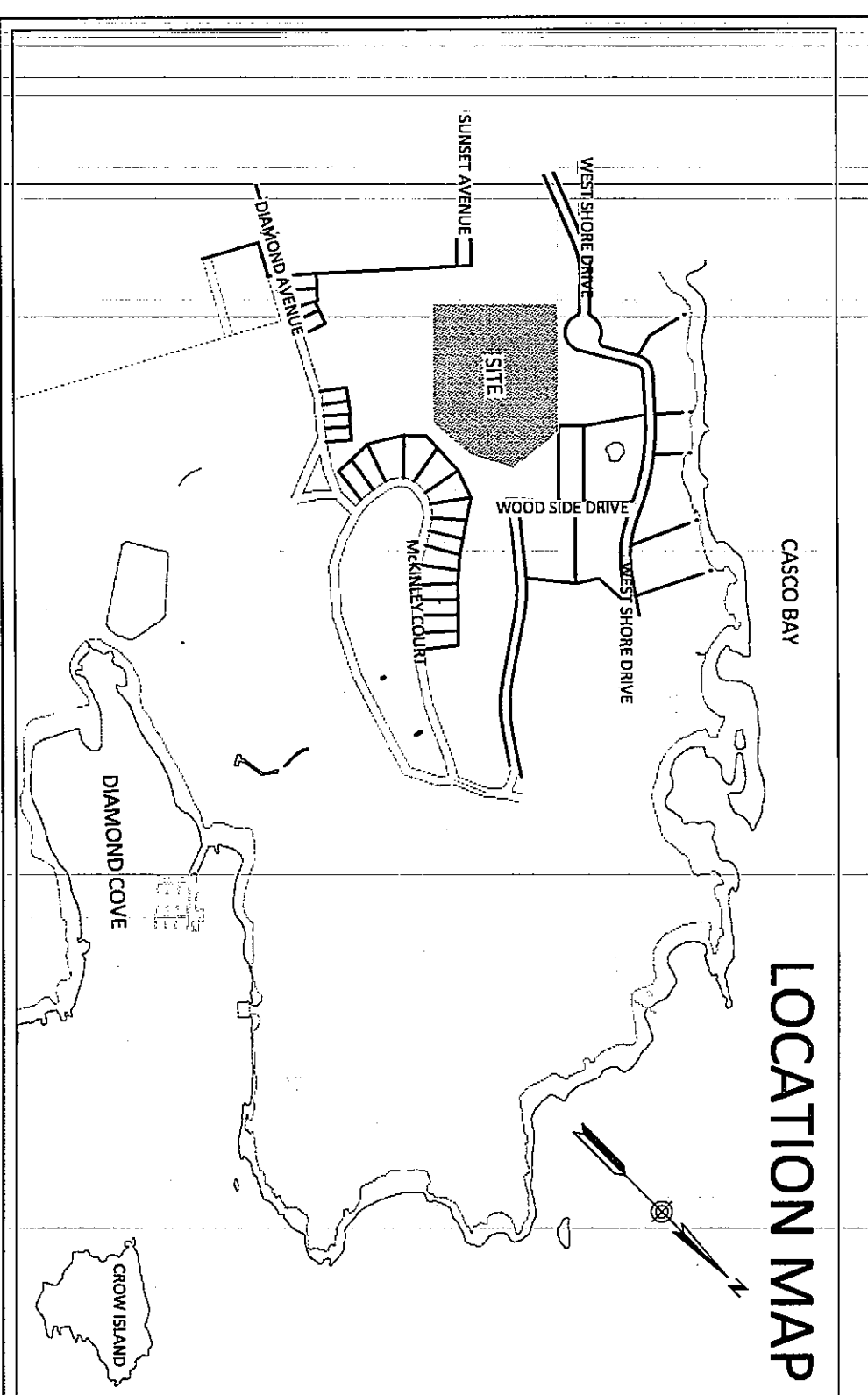
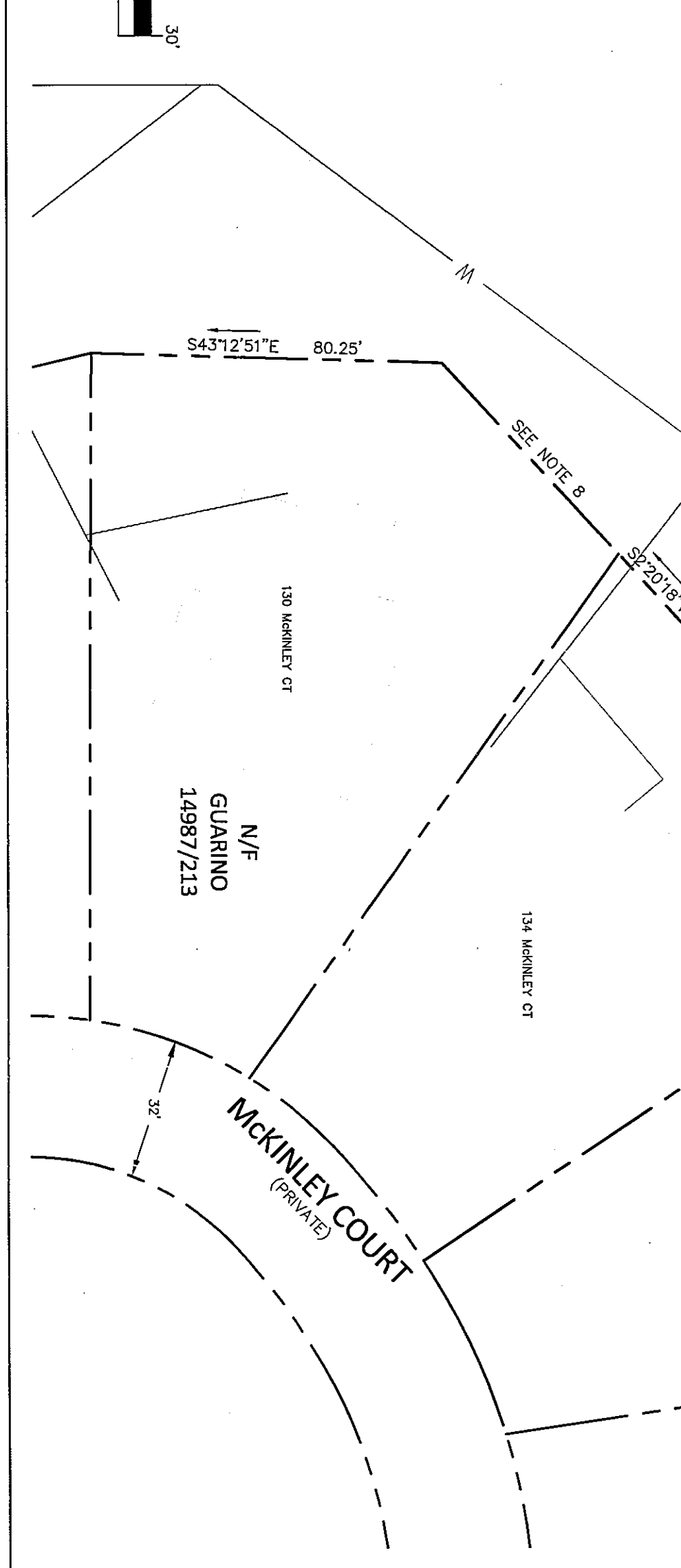
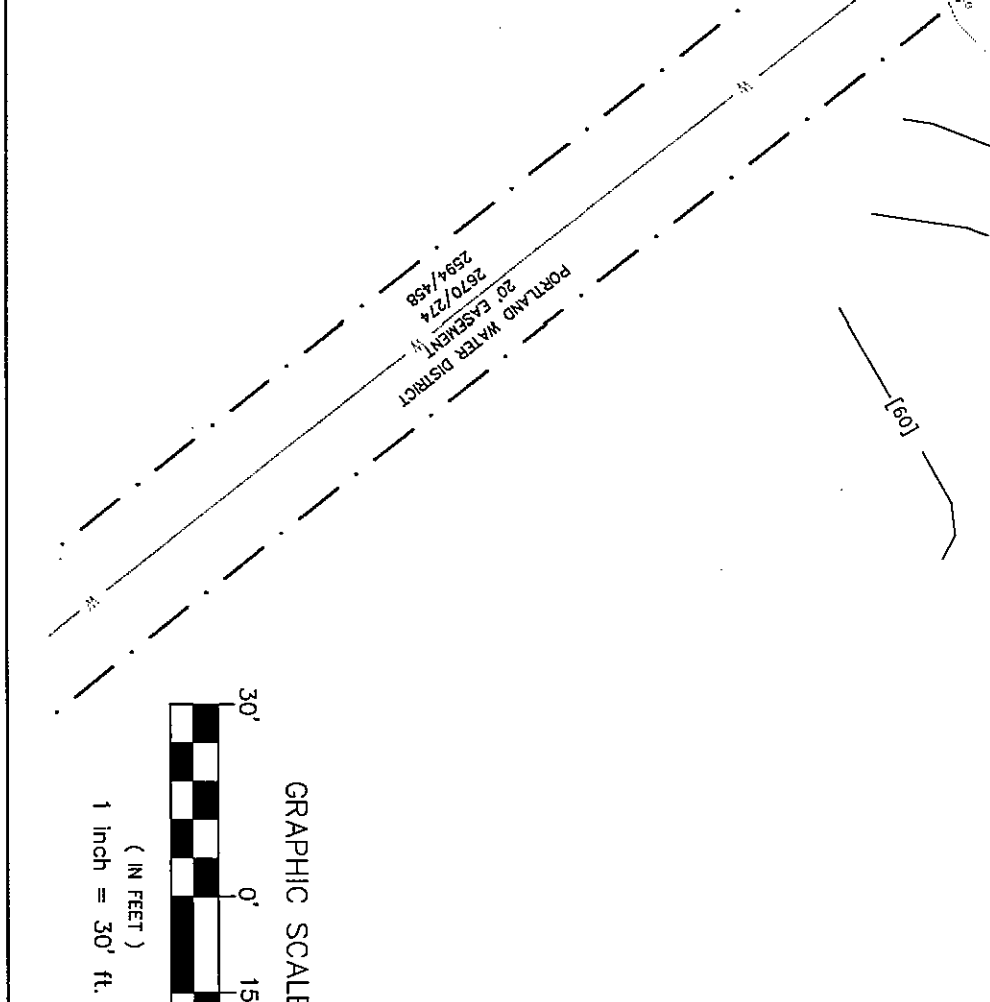


**LEGEND**

- IRON PIPE/ROD FOUND
- SPRINKLER
- CATCH BASIN
- DRAIN MANHOLE
- SEWER MANHOLE
- UTILITY POLE
- UTILITY POLE - GUYANCHOR
- UTILITY POLE (AERIAL MAPPING)
- WETLANDS FLAG FOUND
- CONIFEROUS TREE
- DECIDUOUS TREE
- TREE STUMP
- EASEMENT LINE
- STREET LINE
- PROPERTY LINE
- PARCEL LINE
- EDGE OF STREAM
- OLD/BARRIED WINE FENCE REMAINS
- DRAIN LINE
- SEWER LINE
- WATER LINE (FROM EASEMENT DEED)
- WATER LINE (FROM PLAN APPROXIMATE)
- 5' CONTOUR
- 1' CONTOUR
- TREE LINE / EDGE OF WOODS
- EDGE OF OLD GROWTH (SEE NOTE 11)
- PROPOSED 35' BUFFER FROM OLD GROWTH
- BUILDING CORNER (FIELD LOCATED)
- BUILDING CORNER (AERIAL MAPPING)
- COMMON OWNERSHIP
- END POINTS OF DIMENSION SHOWN
- REFERENCE TO CITY FIELD BOOK
- REFERENCE TO CITY PLAN
- REFERENCE TO RECORDED DEED
- DIMENSION CALLED FOR IN DEED
- DIMENSION AS MEASURED FROM STREET OBSERVATIONS
- ON/OFF STREET LINE
- #/## ON/OFF
- M. ##/##/##
- D.C. ##/##/##
- CL# ##/##/##
- PLAN #/##/##
- ##/##/##



- NOTES**
1. FIELD WORK FOR THIS PROJECT WAS PERFORMED IN APRIL AND MAY 2013, USING A LEICA TOPCON 2305+ ROBOTIC TOTAL STATION INSTRUMENT.
  2. ELEVATIONS ARE CITY DATUM (MEAN TIDE 1941), BASED ON CITY SURVEYS RECORDED IN DEED BOOK 799 PAGES 28 & 64 (TRIM'S 23 & 24).
  3. BARRIERS ARE BOND NORTH AS BASED ON THE CITY OF PORTLAND'S CONTROL NETWORK "CINNET".
  4. UNDERGROUND UTILITY LINES WERE NOT MARKED ON SITE AT THE TIME OF THIS SURVEY. MOST OF THE WATER LINES ARE SHOWN AS EASEMENT, THAT THE LINE AND THE EASEMENT ARE SHOWN BASED ON FIELD LOCATIONS OF A WATER VALVE AND WATER METERS FOUND NORTHWESTERLY OF WEST SHORE DRIVE AND A WATER METER FOUND IN FRONT OF 181 DIAMOND AVENUE. NO EVIDENCE OF THIS LINE WAS FOUND ON THE PROJECT SITE ITSELF.
  5. WETLANDS WERE FLAGGED BY FERMCO TECHNICS, INC. IN NOVEMBER 2012.
  6. ALL BODYS SHOWN ARE PRIVATE, WITH THE EXCEPTION OF SUNSET AVENUE.
  7. ALL DEED BODYS AND PAGES REFERENCE THE GUMBERLAND COUNTY REGISTER OF DEEDS.
  8. NO BOUNDARY MARKERS ON OTHER BOUNDARY EVIDENCE WERE FOUND ON SITE FOR THE LOTS FRONTING ON MCKINLEY COURT. THOSE LOTS ARE SHOWN BASED ON A CITY SIMING ALONG DIAMOND AVENUE (CITY PLAN 940/59), AS WELL AS DIAMOND COVE SUBDIVISION PLANS OF RECORD.
  9. A TOTAL OF NINETEEN BOUNDARY MARKERS WERE FOUND AND LOCATED ALONG WEST SHORE DRIVE BETWEEN WILLIAMS STREET AND WOOD SIDE DRIVE. THESE MARKERS, ALONG WITH DIAMOND COVE SUBDIVISION PLANS OF RECORD, PROVIDED THE BASIS FOR THE PROPERTY LINES PER CITY OF PORTLAND AERIAL MAPPING.
  10. BUILDINGS ALONG MCKINLEY COURT, AS WELL AS STOOD EDGES OF MCKINLEY, WOOD SIDE DRIVE AND WEST SHORE DRIVE, ARE SHOWN AS PER CITY OF PORTLAND AERIAL MAPPING.
  11. THE EDGE OF THE OLD GROWTH STAND IS SHOWN AS MARKED ON SITE BY SCOTTISH HARK FORESTRY SERVICES IN AUGUST 2013. THIS LINE IS SHOWN AS A DOTTED LINE ON THIS PLAN. THE OLD GROWTH STAND IS SHOWN AS A SOLID LINE ON THIS PLAN. THE OLD GROWTH STAND IS SHOWN AS A SOLID LINE ON THIS PLAN. THE OLD GROWTH STAND IS SHOWN AS A SOLID LINE ON THIS PLAN.
  12. THE OLD GROWTH STAND IS SHOWN AS MARKED ON SITE BY SCOTTISH HARK FORESTRY SERVICES IN AUGUST 2013. THIS LINE IS SHOWN AS A DOTTED LINE ON THIS PLAN. THE OLD GROWTH STAND IS SHOWN AS A SOLID LINE ON THIS PLAN. THE OLD GROWTH STAND IS SHOWN AS A SOLID LINE ON THIS PLAN.
  13. THE OLD GROWTH STAND IS SHOWN AS MARKED ON SITE BY SCOTTISH HARK FORESTRY SERVICES IN AUGUST 2013. THIS LINE IS SHOWN AS A DOTTED LINE ON THIS PLAN. THE OLD GROWTH STAND IS SHOWN AS A SOLID LINE ON THIS PLAN. THE OLD GROWTH STAND IS SHOWN AS A SOLID LINE ON THIS PLAN.
  14. THE OLD GROWTH STAND IS SHOWN AS MARKED ON SITE BY SCOTTISH HARK FORESTRY SERVICES IN AUGUST 2013. THIS LINE IS SHOWN AS A DOTTED LINE ON THIS PLAN. THE OLD GROWTH STAND IS SHOWN AS A SOLID LINE ON THIS PLAN. THE OLD GROWTH STAND IS SHOWN AS A SOLID LINE ON THIS PLAN.
  15. THE OLD GROWTH STAND IS SHOWN AS MARKED ON SITE BY SCOTTISH HARK FORESTRY SERVICES IN AUGUST 2013. THIS LINE IS SHOWN AS A DOTTED LINE ON THIS PLAN. THE OLD GROWTH STAND IS SHOWN AS A SOLID LINE ON THIS PLAN. THE OLD GROWTH STAND IS SHOWN AS A SOLID LINE ON THIS PLAN.
  16. THE OLD GROWTH STAND IS SHOWN AS MARKED ON SITE BY SCOTTISH HARK FORESTRY SERVICES IN AUGUST 2013. THIS LINE IS SHOWN AS A DOTTED LINE ON THIS PLAN. THE OLD GROWTH STAND IS SHOWN AS A SOLID LINE ON THIS PLAN. THE OLD GROWTH STAND IS SHOWN AS A SOLID LINE ON THIS PLAN.
  17. THE OLD GROWTH STAND IS SHOWN AS MARKED ON SITE BY SCOTTISH HARK FORESTRY SERVICES IN AUGUST 2013. THIS LINE IS SHOWN AS A DOTTED LINE ON THIS PLAN. THE OLD GROWTH STAND IS SHOWN AS A SOLID LINE ON THIS PLAN. THE OLD GROWTH STAND IS SHOWN AS A SOLID LINE ON THIS PLAN.
  18. THE OLD GROWTH STAND IS SHOWN AS MARKED ON SITE BY SCOTTISH HARK FORESTRY SERVICES IN AUGUST 2013. THIS LINE IS SHOWN AS A DOTTED LINE ON THIS PLAN. THE OLD GROWTH STAND IS SHOWN AS A SOLID LINE ON THIS PLAN. THE OLD GROWTH STAND IS SHOWN AS A SOLID LINE ON THIS PLAN.
  19. THE OLD GROWTH STAND IS SHOWN AS MARKED ON SITE BY SCOTTISH HARK FORESTRY SERVICES IN AUGUST 2013. THIS LINE IS SHOWN AS A DOTTED LINE ON THIS PLAN. THE OLD GROWTH STAND IS SHOWN AS A SOLID LINE ON THIS PLAN. THE OLD GROWTH STAND IS SHOWN AS A SOLID LINE ON THIS PLAN.
  20. THE OLD GROWTH STAND IS SHOWN AS MARKED ON SITE BY SCOTTISH HARK FORESTRY SERVICES IN AUGUST 2013. THIS LINE IS SHOWN AS A DOTTED LINE ON THIS PLAN. THE OLD GROWTH STAND IS SHOWN AS A SOLID LINE ON THIS PLAN. THE OLD GROWTH STAND IS SHOWN AS A SOLID LINE ON THIS PLAN.



CITY OF PORTLAND, MAINE  
 SHEET # 1 OF 1  
 PLAN NUMBER 882 / 35

CITY OF PORTLAND, MAINE  
 PUBLIC SERVICES DEPARTMENT  
 ENGINEERING DIVISION

EXISTING CONDITIONS PLAN  
 FOR  
 PROPOSED TRANSFER STATION SITE  
 WOODSIDE DRIVE, DIAMOND COVE,  
 GREAT DIAMOND ISLAND, PORTLAND, MAINE

SURVEY CREW:  
 WGS / LKS  
 DRAWN BY:  
 L.K. SCZELZA  
 CHECKED BY:  
 W.G. SCOTTY  
 SCALE:  
 1" = 30'  
 DATE:  
 AUG. 15, 2013

REFERENCES:  
 PROJECT FIELD BOOK:  
 L847 PP 1-18; 30; 56-57  
 OTHER FIELD BOOKS USED:  
 L 799 PP 26 & 64  
 T 111 PP 61 & 68  
 T 107 PP 53-60  
 TAX MAPS: 83E & 83B

CITY VAULT PLANS:  
 908/186; 940/42A; 585/6; 940/55;  
 940/52; 908/6  
 CCRD PLANS:  
 181/36; 187/37; 199/340; 198/389;  
 194/59; 194/437; 202/528; 160/54;  
 185/67  
 PWD PLANS:  
 PWD GIS PLOT  
 PLAN OF FORT MCKINLEY WATER LINES

Civil 3D 2012 Drawing Name:  
 "GDL Transfer\_Station\_2013.dwg"  
 Civil 3D 2012 Survey Database:  
 "GDL Transfer\_Station\_2012\_DB"  
 CMM ADJUSTMENT: "GDL\_2013"