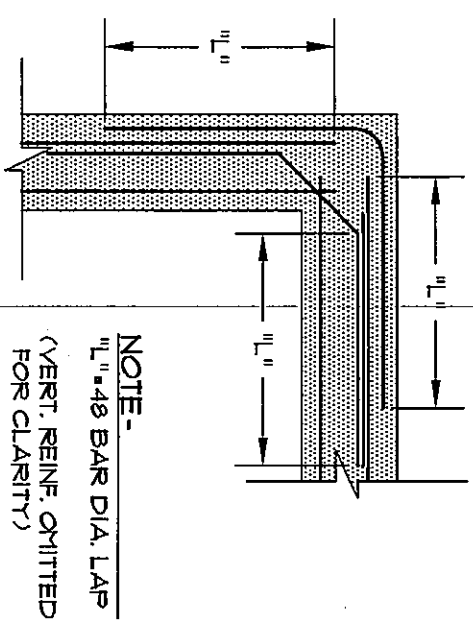
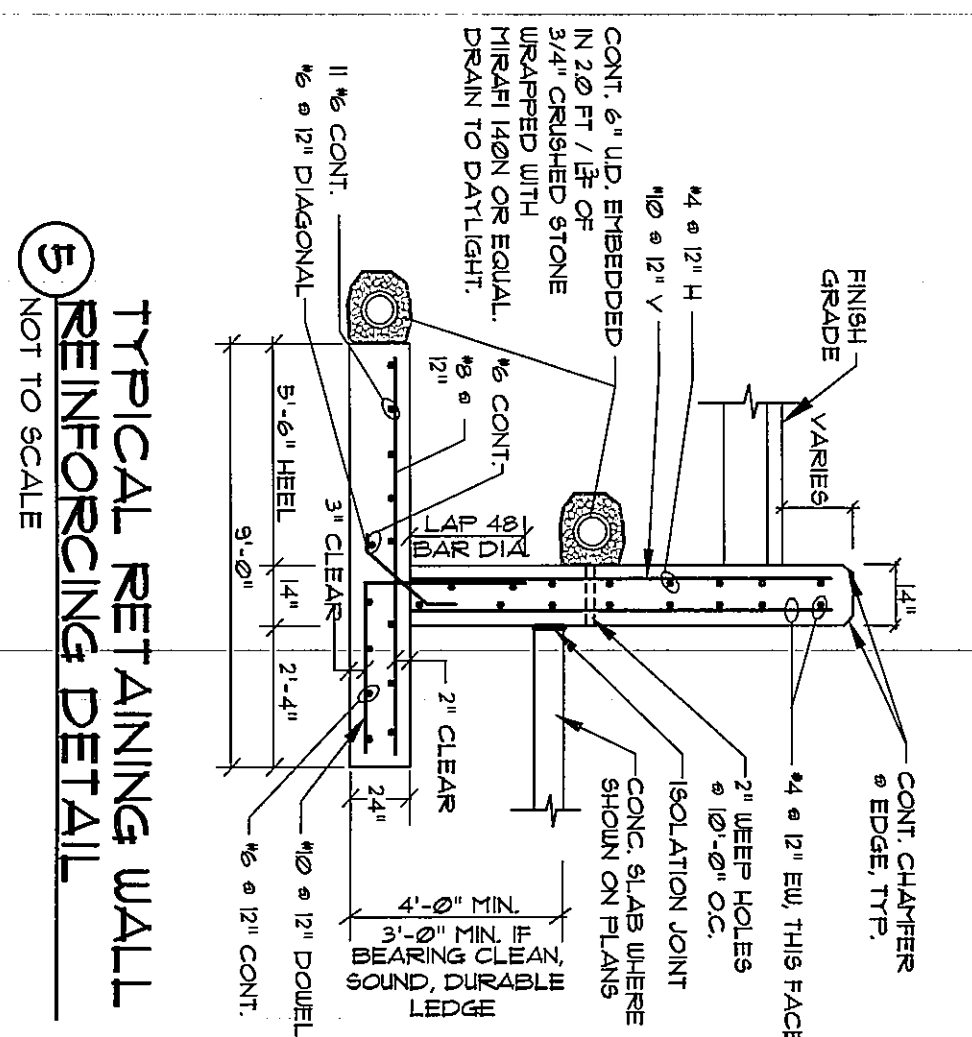


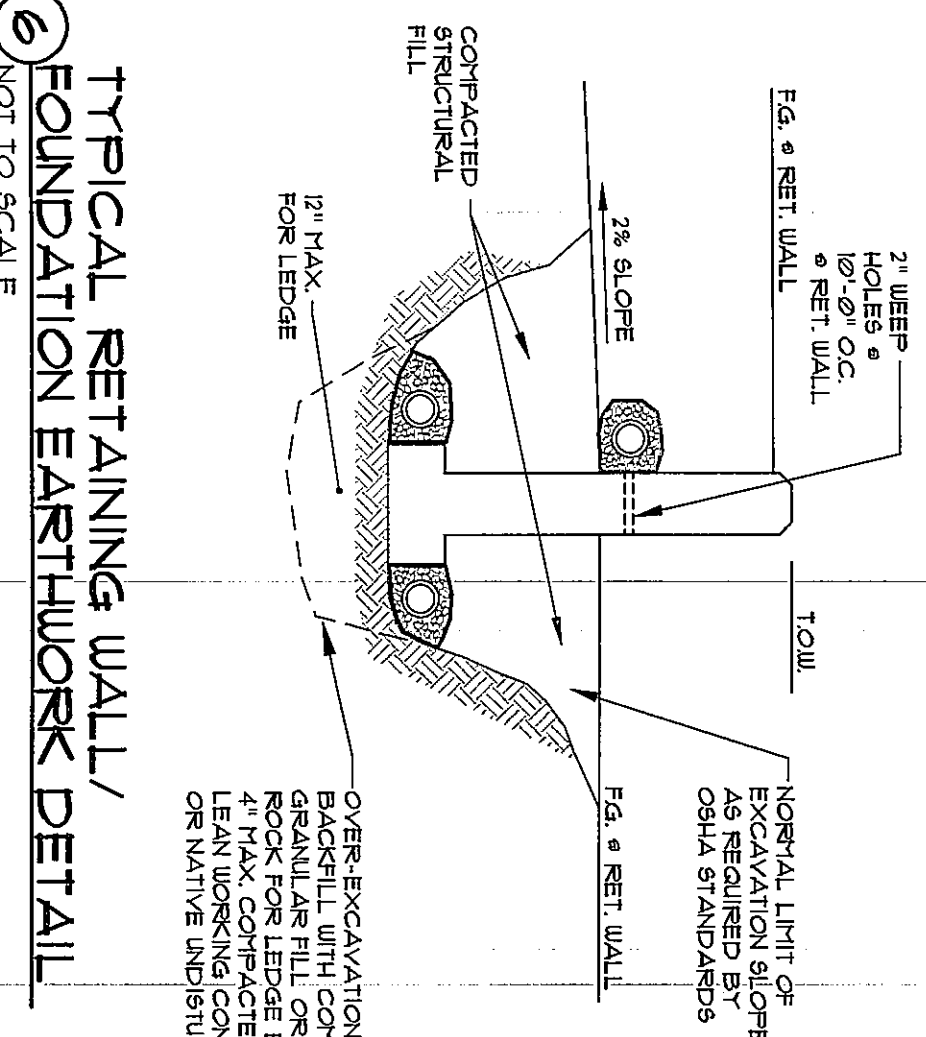
1 STEEL BEAM BEARING DETAIL
RETAINING FOUNDATION WALL
NOT TO SCALE



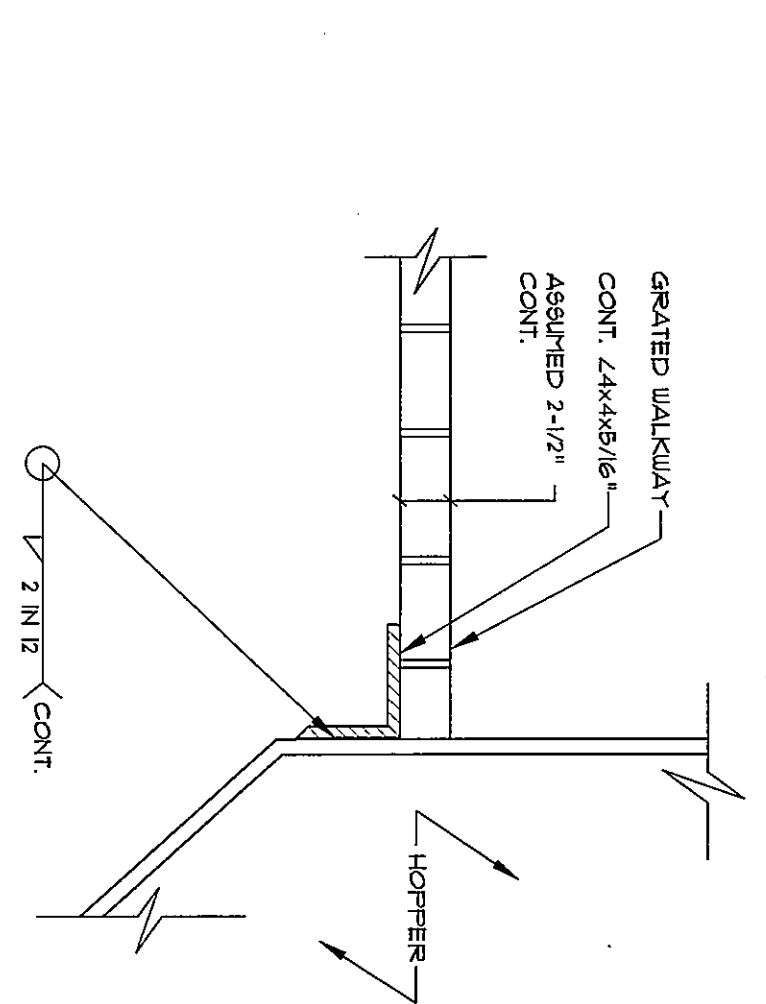
3 CORNER REINFORCING DETAIL
NOT TO SCALE



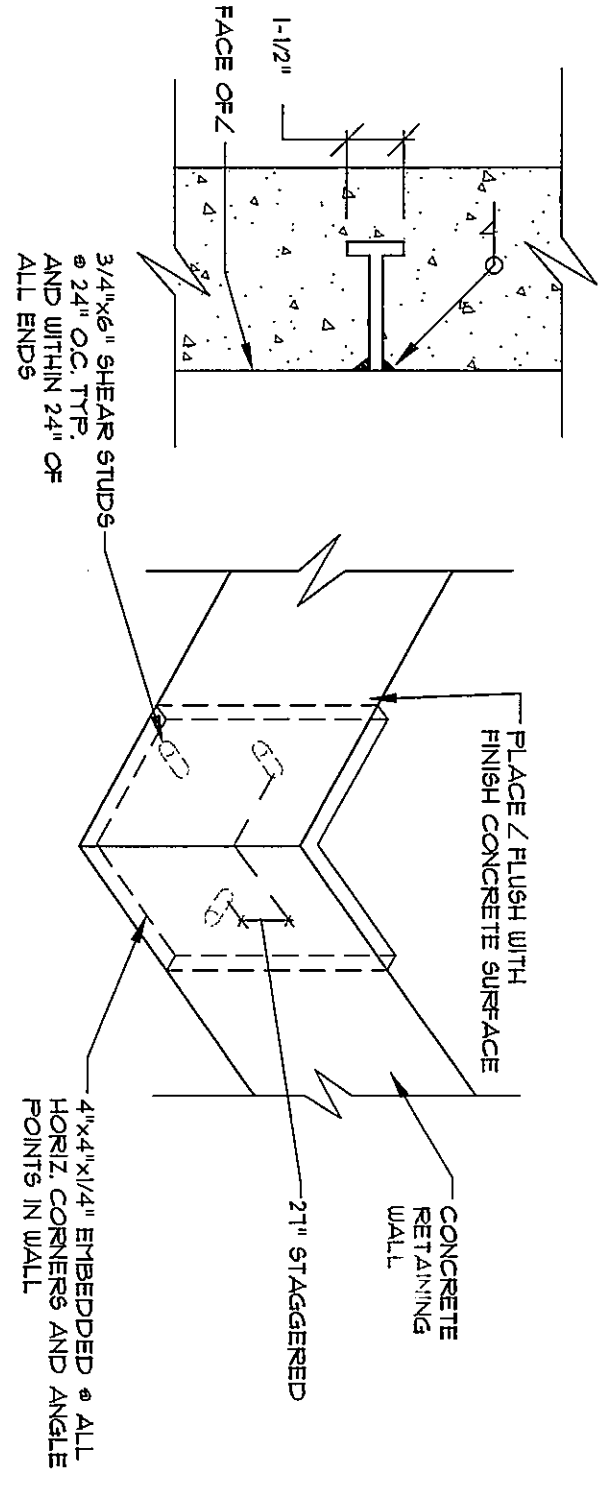
5 TYPICAL RETAINING WALL REINFORCING DETAIL
NOT TO SCALE



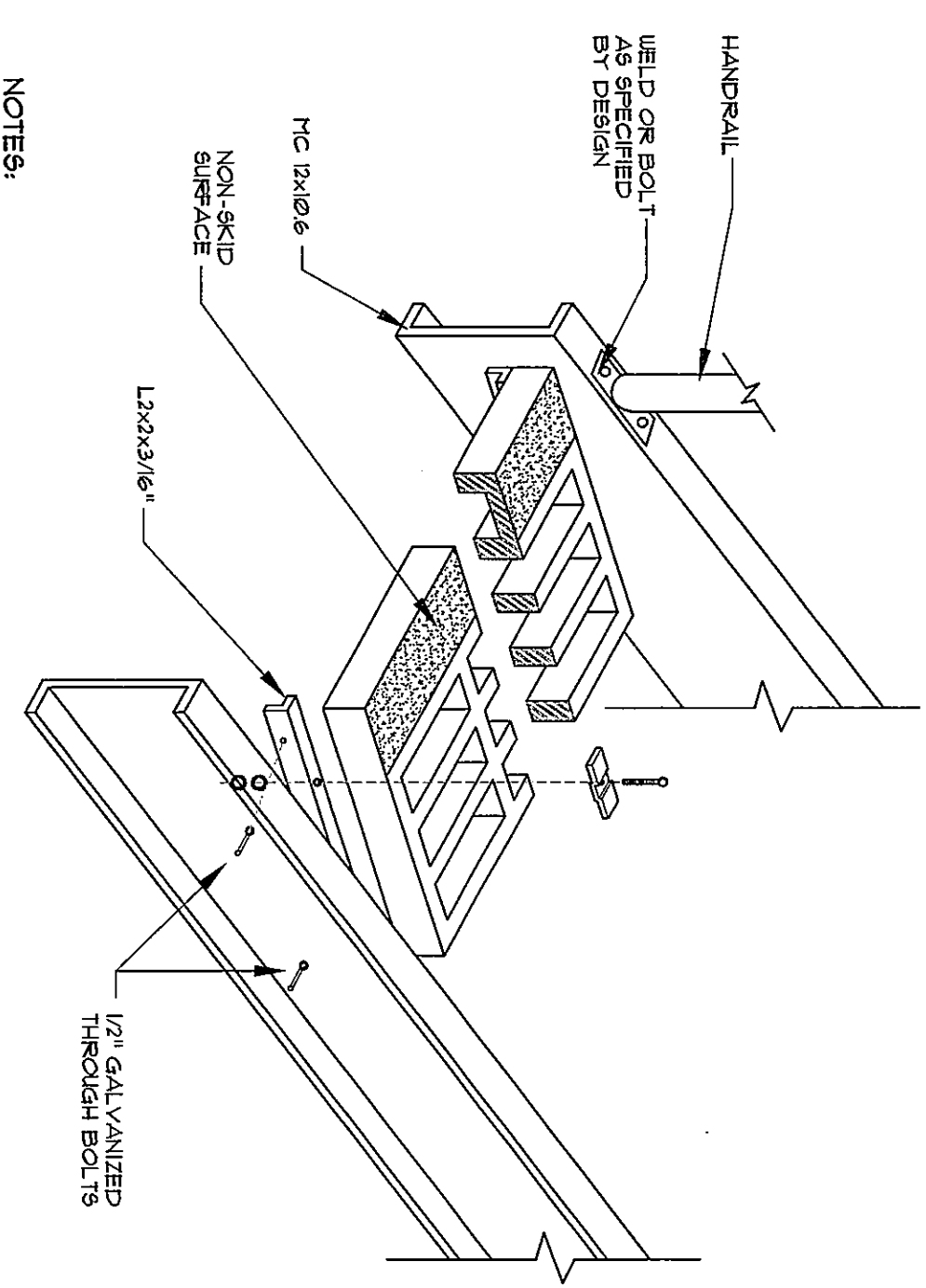
6 TYPICAL RETAINING WALL FOUNDATION EARTHWORK DETAIL
NOT TO SCALE



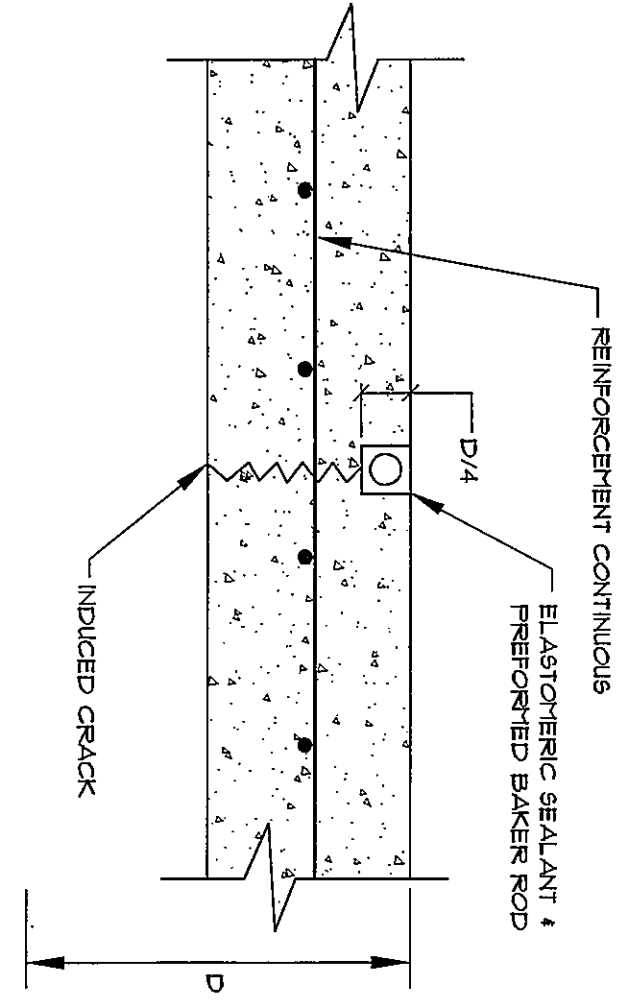
2 CONNECTION - HOPPER/METAL WALKWAY
NOT TO SCALE



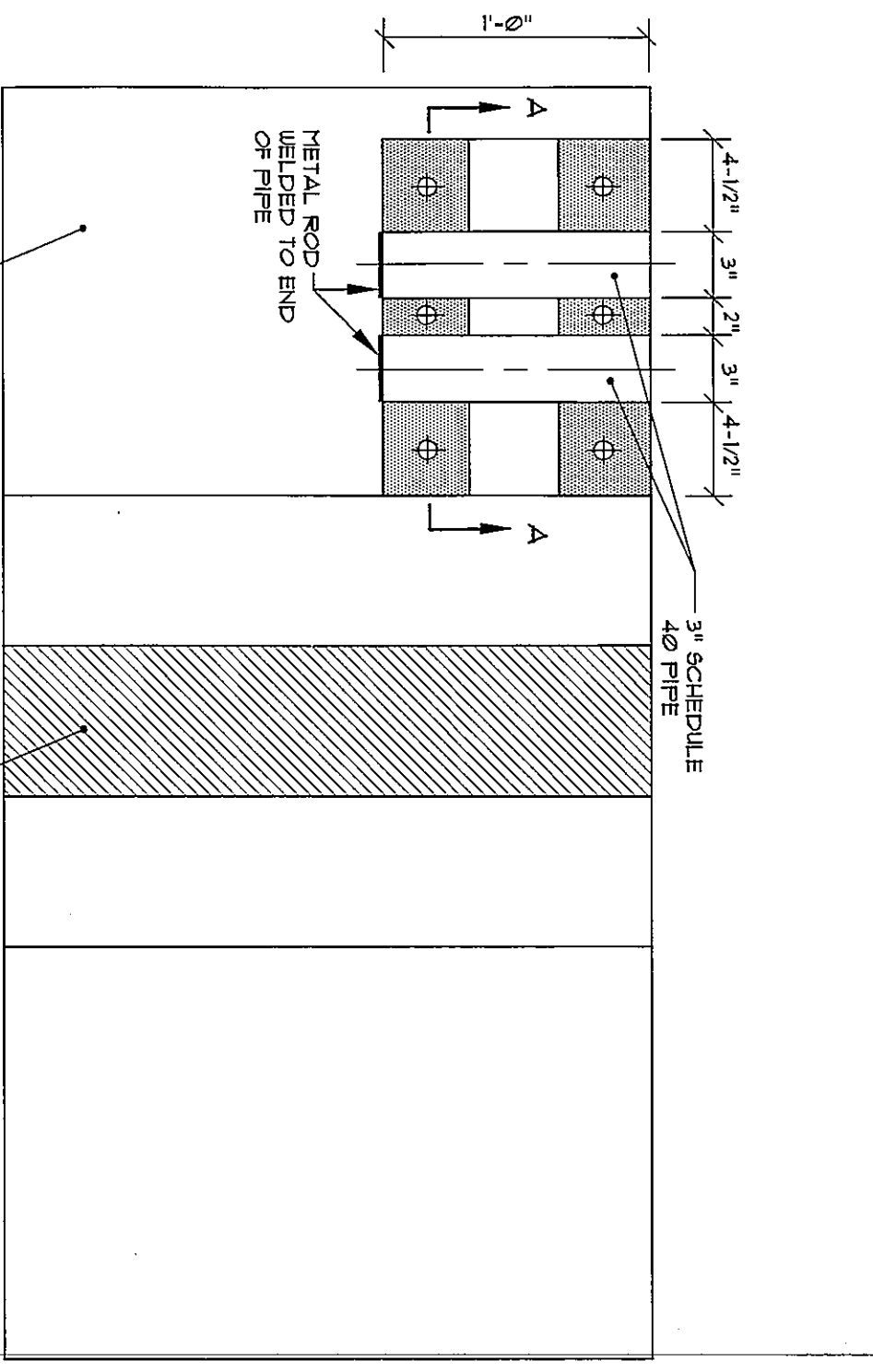
4 EMBEDMENT DETAIL CORNER & ANGLE PROTECTOR
NOT TO SCALE



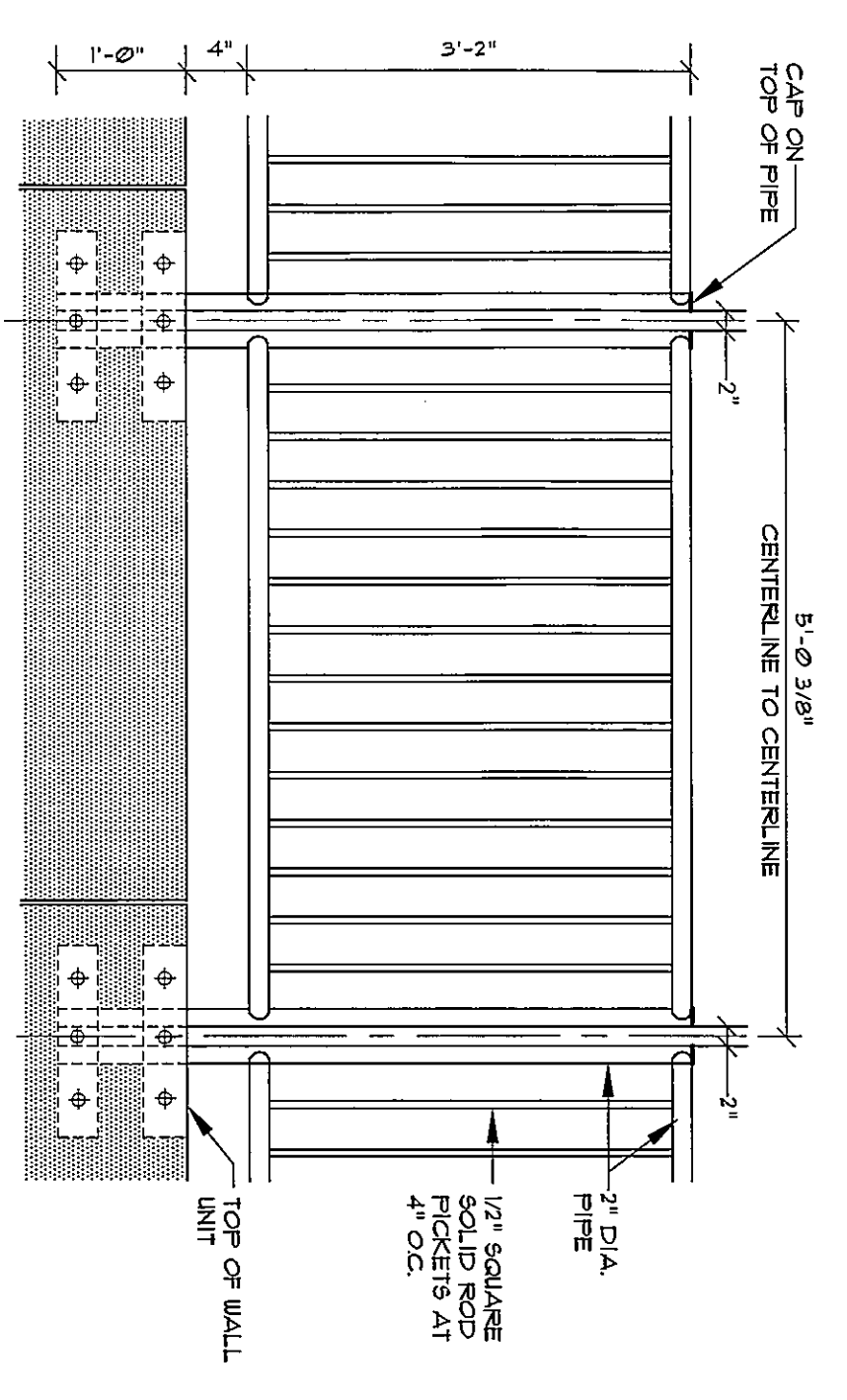
3 TYPICAL STAIR CONSTRUCTION
NOT TO SCALE



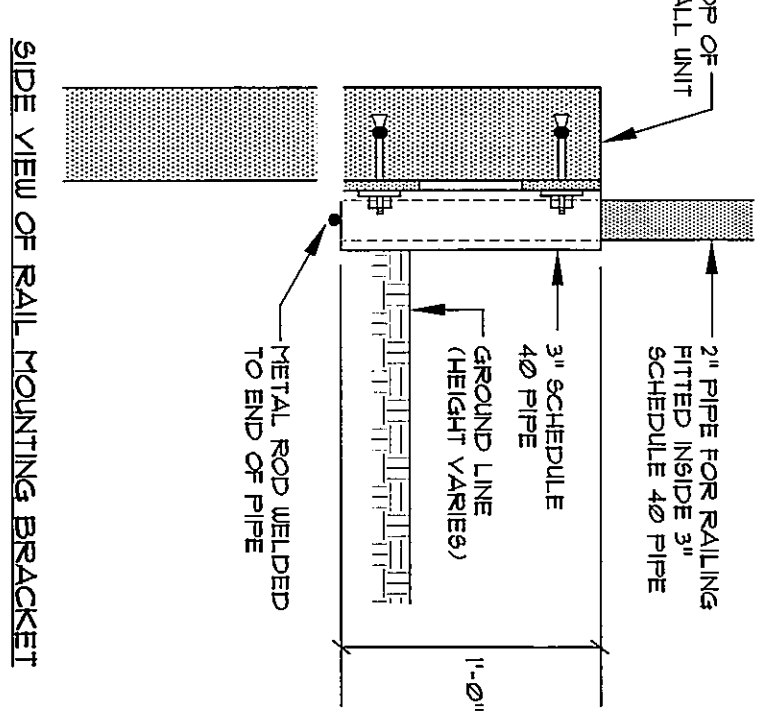
4 CONTRACTION/CONTROL JOINT
NOT TO SCALE



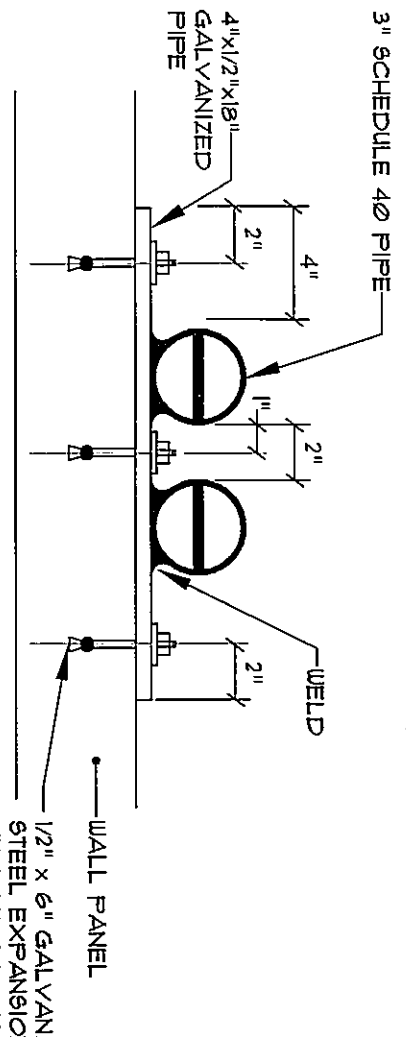
DETAIL ELEVATION OF RAIL MOUNTING BRACKET



ELEVATION OF TYPICAL RAILING

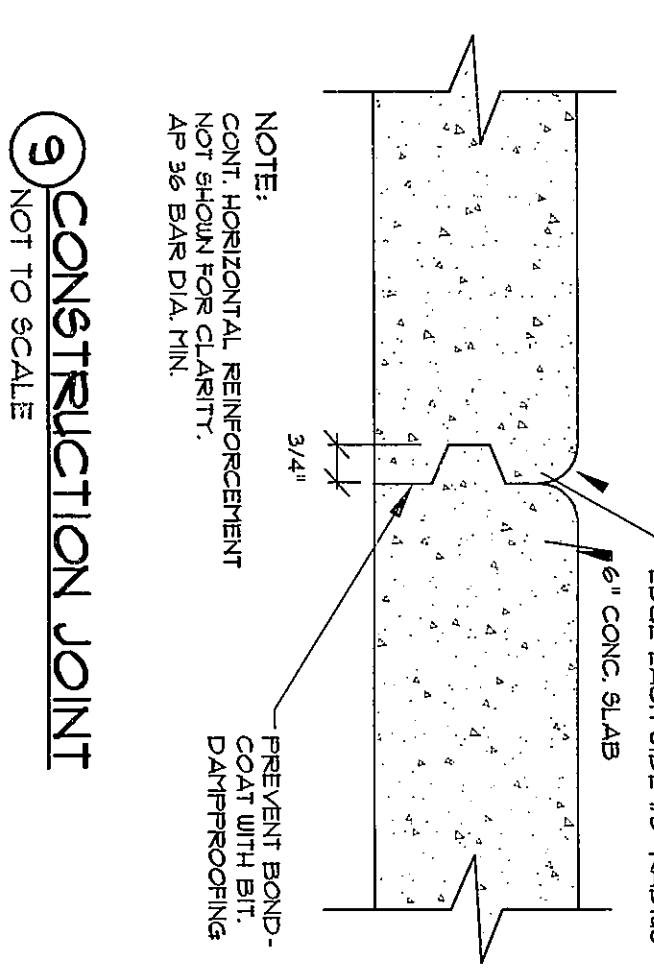


SIDE VIEW OF RAIL MOUNTING BRACKET

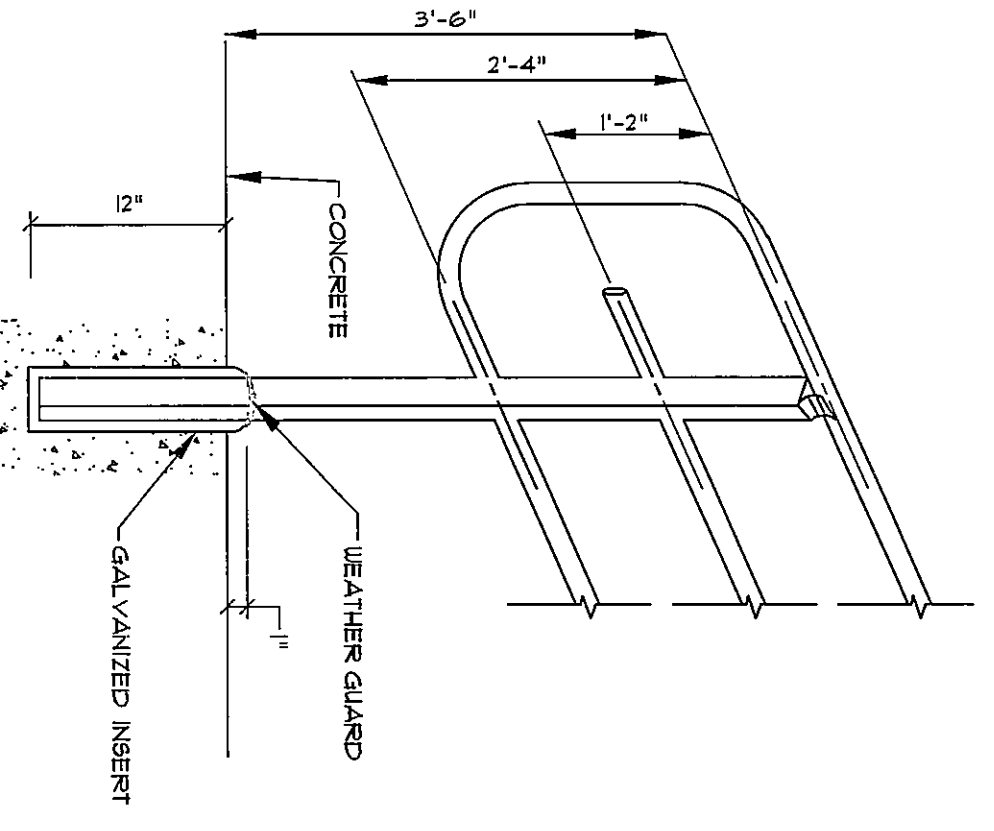


SECTION A-A

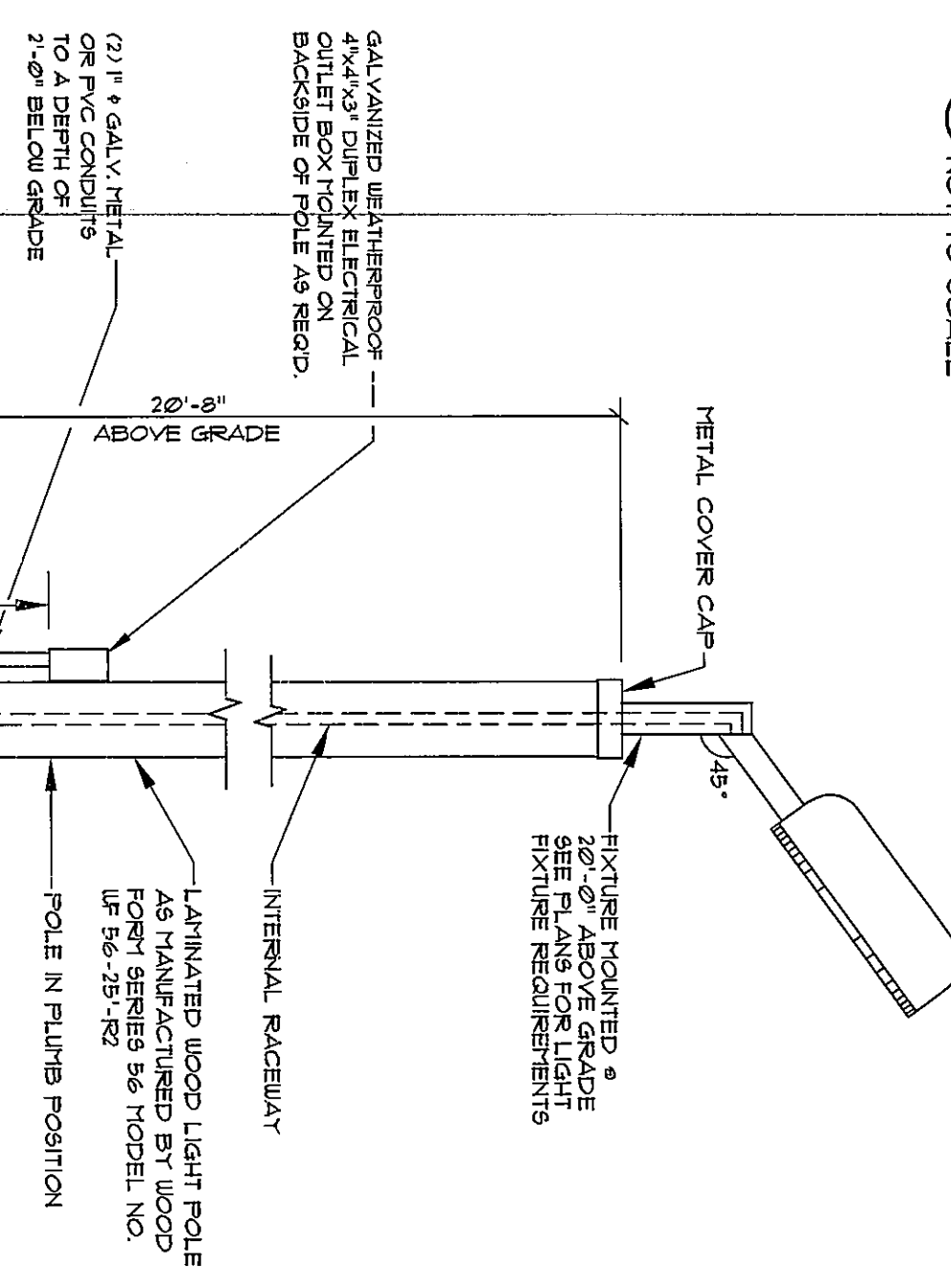
7 REMOVABLE SAFETY RAILING & PRECAST WALL
NOT TO SCALE



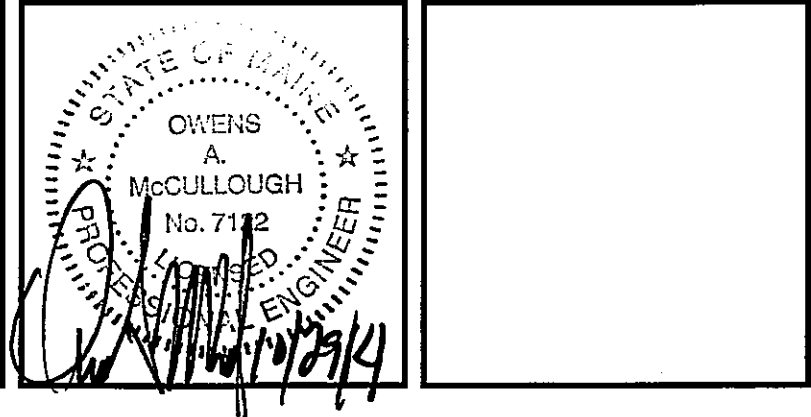
3 CONSTRUCTION JOINT
NOT TO SCALE



7 REMOVABLE SAFETY RAILING & HOPPER/COMPACTOR
NOT TO SCALE



WOOD LIGHT POLE BASE
NOT TO SCALE



REV.	BY:	DATE:	STATUS:
D	OAM	10-29-14	REVISED TO SHOW LIGHTING FIXTURE
C	OAM	09-5-14	SUBMITTED TO DEP
B	OAM	08-18-14	ISSUED FOR PRELIMINARY REVIEW
A	OAM	02-05-14	ISSUED FOR CLIENT REVIEW

THIS PLAN SHALL NOT BE MODIFIED WITHOUT WRITTEN PERMISSION FROM SEBAGO TECHNICS, INC. ANY ALTERATIONS, AUTHORIZED OR OTHERWISE, SHALL BE AT THE USER'S SOLE RISK AND WITHOUT LIABILITY TO SEBAGO TECHNICS, INC.

SEBAGO TECHNICS
www.sebagotechnics.com
75 John Roberts Rd. - Suite 1A South Portland, ME 04106 Tel. 207-200-2100
250 Goddard Rd. - Suite B Lewiston, ME 04240 Tel. 207-754-7656

PROJECT NO.	FIELD BOOK	DESIGN	CHKD	DRAWN
09405		OAM	OAM	JAR

DETAILS OF:
GREAT DIAMOND ISLAND TRANSFER AND RECYCLING FACILITY
GREAT DIAMOND ISLAND PORTLAND, MAINE
FOR: CITY OF PORTLAND
55 PORTLAND STREET PORTLAND, MAINE 04101

DATE: 01-29-14
SCALE: NTS
SHEET 6 OF 8