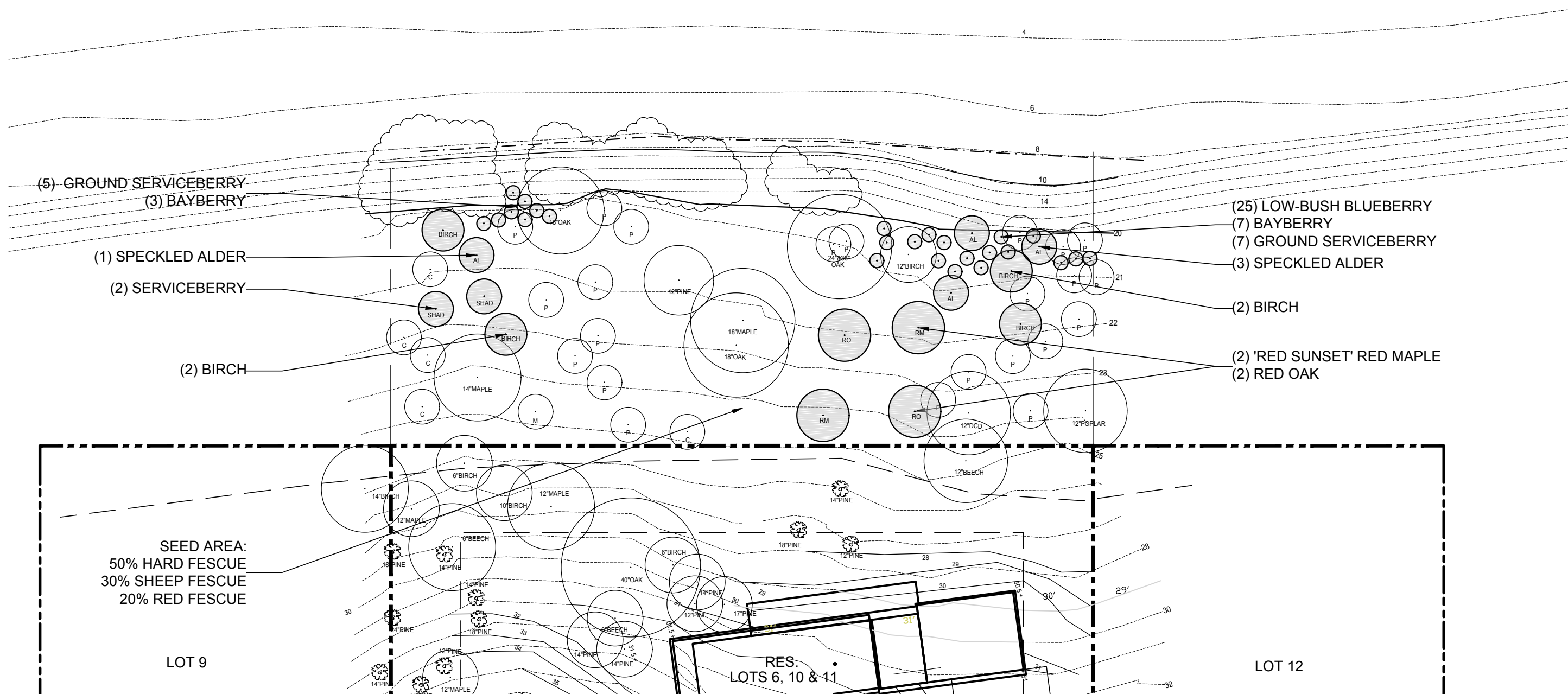


CASCO BAY



- (5) GROUND SERVICEBERRY
- (3) BAYBERRY
- (1) SPECKLED ALDER
- (2) SERVICEBERRY
- (2) BIRCH

- (25) LOW-BUSH BLUEBERRY
- (7) BAYBERRY
- (7) GROUND SERVICEBERRY
- (3) SPECKLED ALDER
- (2) BIRCH
- (2) 'RED SUNSET' RED MAPLE
- (2) RED OAK

SEED AREA:
50% HARD FESCUE
30% SHEEP FESCUE
20% RED FESCUE

LOT 9

RES.
LOTS 6, 10 & 11

LOT 12

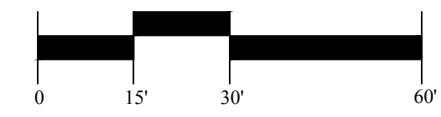
Luedke Residence - Remediation Plan

Crescent Ave, Great Diamond Island, Maine

June 28, 2016



GRAPHIC SCALE



MOHR & SEREDIN
Landscape Architects, Inc.

18 Pleasant Street, Portland, Maine 041
ph: 1.207.871.0003
fax: 1.207.871.1419