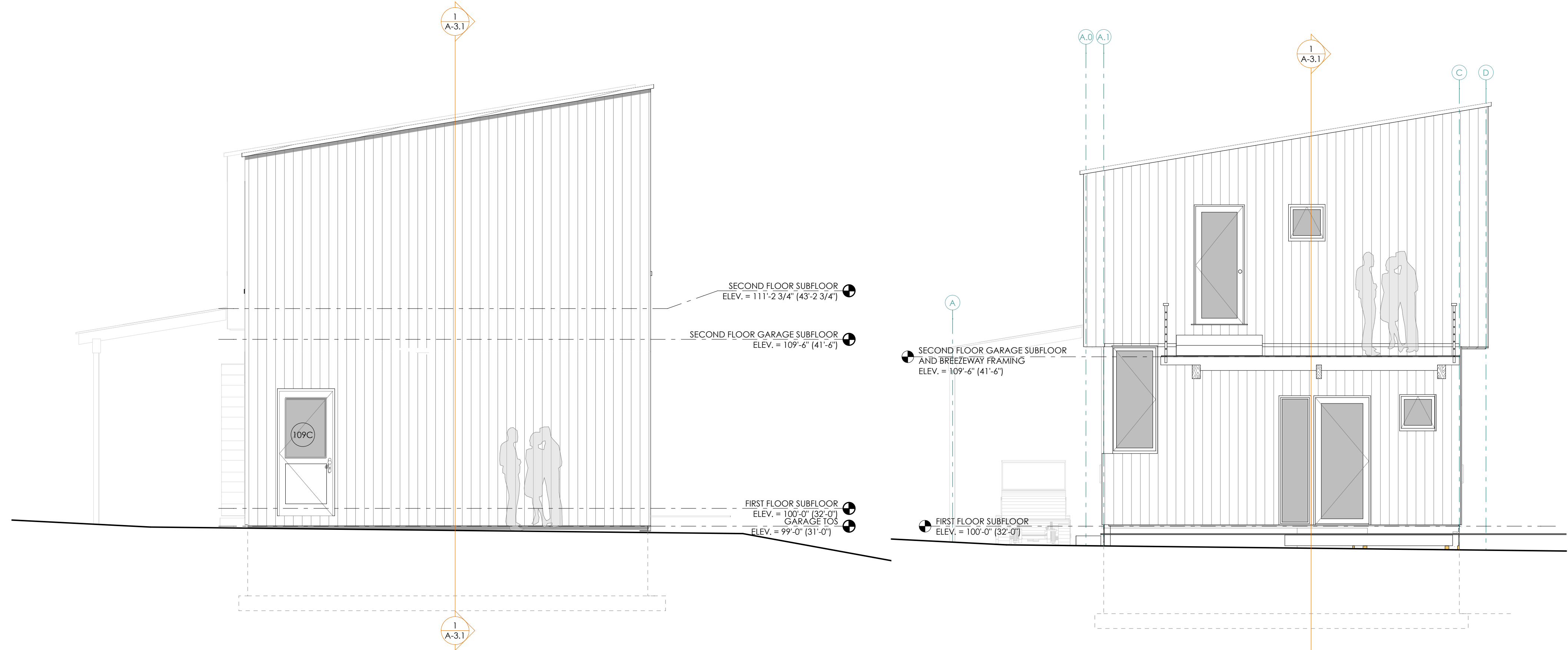


1 SOUTH ELEVATION  
SCALE: 1/4" = 1'-0"

2 SOUTH ELEVATION @ BREEZEWAY  
SCALE: 1/4" = 1'-0"



3 NORTH ELEVATION  
SCALE: 1/4" = 1'-0"

7 NORTH ELEVATION AT BREEZEWAY  
SCALE: 1/4" = 1'-0"



View at Back Looking North from Woods



View Looking To South at the Entry



View from Southwest Corner



ISSUE	DATE	DESCRIPTION

**CONSULTANTS:**  
Aron Jones, PE  
77 Oak Street, Portland ME 04101  
Matt Legere E.I.T.  
mat@structuralinteg.com  
207-774-4616

**DRAFTER:**  
Patrice Boettje, AIA  
3/1/17  
**PROJECT STATUS:**  
Permit Set

**Luedke Residence**  
James & Katharine Luedke  
Crescent Ave Great Diamond Island ME  
04109