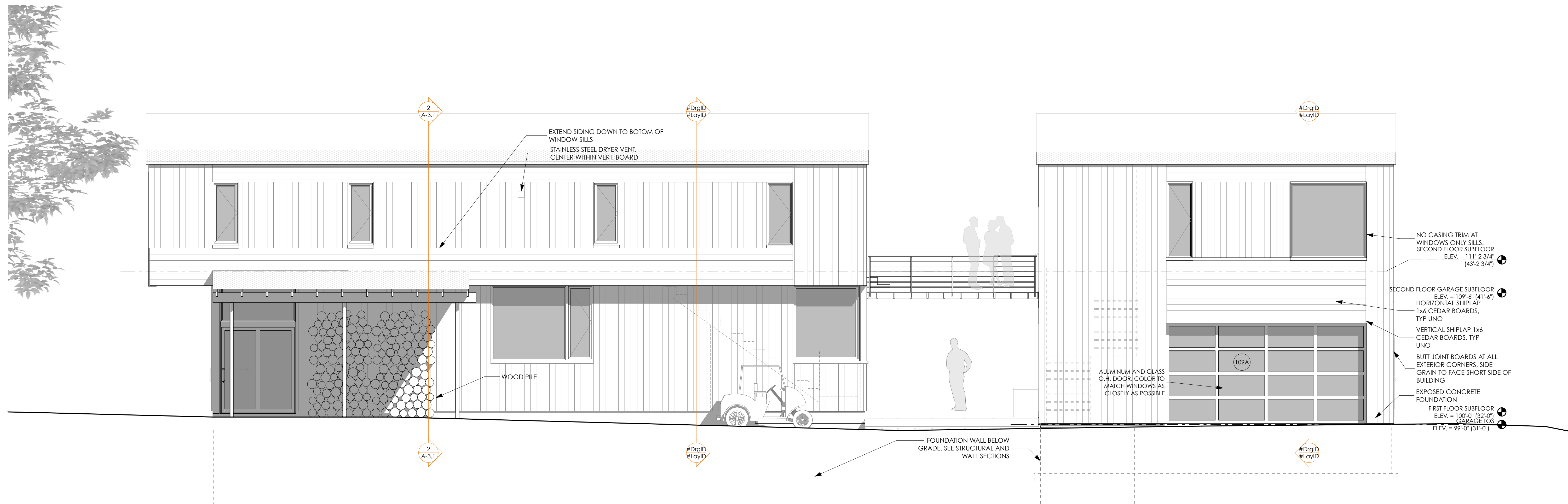




1 WEST ELEVATION
SCALE: 1/4" = 1'-0"



2 EAST ELEVATION
SCALE: 1/4" = 1'-0"

IMPORTANT NOTE TO SIDING INSTALLER:
ALL ELEVATIONS SHOW A HORIZ. AND VERT. BOARD PATTERN. THESE PATTERNS ARE FOR DIRECTION OF PATTERN ONLY AND ARE NOT COORDINATED WITH ACTUAL LAY-OUT OF THE BOARDS IN THE FIELD.
ALL HORIZONTAL AND VERTICAL 1X6 EWC BOARDS SHALL BE LAID-OUT PER AREA. HORIZONTAL BOARDS SHALL BE RIPPE TO CREATE EQUAL HT. BOARDS AT TOP AND BOTTOM AND FULL BOARDS IN BETWEEN. VERTICAL BOARDS SHALL BE RIPPE TO CREATE EQUAL WIDTH BOARDS AT EACH END AND FULL BOARDS BETWEEN. LAY-OUT SHOULD START WITH CENTER OF DIMENSION BEING AT A JOINT OR AT THE MIDDLE OF A BOARD, WHICH EVER ONE GIVES THE MOST WIDTH OR HEIGHT TO THE 2 EQUAL BOARDS.

CENTER OF AREA IN THIS EXAMPLE HAPPENS TO WORK BETTER AT A JOINT INSTEAD OF THE CENTER OF A BOARD LEAVING APPROX. 3 1/2" OF BOARD WIDTH AT EACH END. USING CENTER OF A BOARD WOULD HAVE LEFT 1 1/4" BOARDS AT EACH END.

MITER WOOD SILL AT CORNER WINDOWS, TYP.
WEAVE HORIZONTAL BOARD CORNERS AT THIS LOCATION ONLY. CHANGE OVERLAP AT EVERY COURSE

Breakmetal Coil Stack Mullion Covers by Window Manufacturer. Color to match windows and doors. TYP. at outside corner of living room, master bedroom, house stair and where units are separated by a vertical or horizontal wood support.

MITER WOOD SILL AT CORNER WINDOWS, TYP.

WOOD SILL TO EXTEND UNDER ALL DOORS AND COLUMNS, TYP.



CHANGES THIS ISSUE:	ID	DESCRIPTION

ISSUE NUMBER	DATE	DESCRIPTION

CONSULTANTS:
Aron Jones, PE
77 Oak Street, Portland ME 04101
Matt Legere E.I.T.
mat@structuralinteg.com
207-774-4616

DRAFTER/PERSON:
Patrice Boehme, AIA
DATE OF ISSUE:
3/1/17
PROJECT STATUS:
Permit Set

Luedke Residence
James & Katharine Luedke
Crescent Ave Great Diamond Island ME
04109