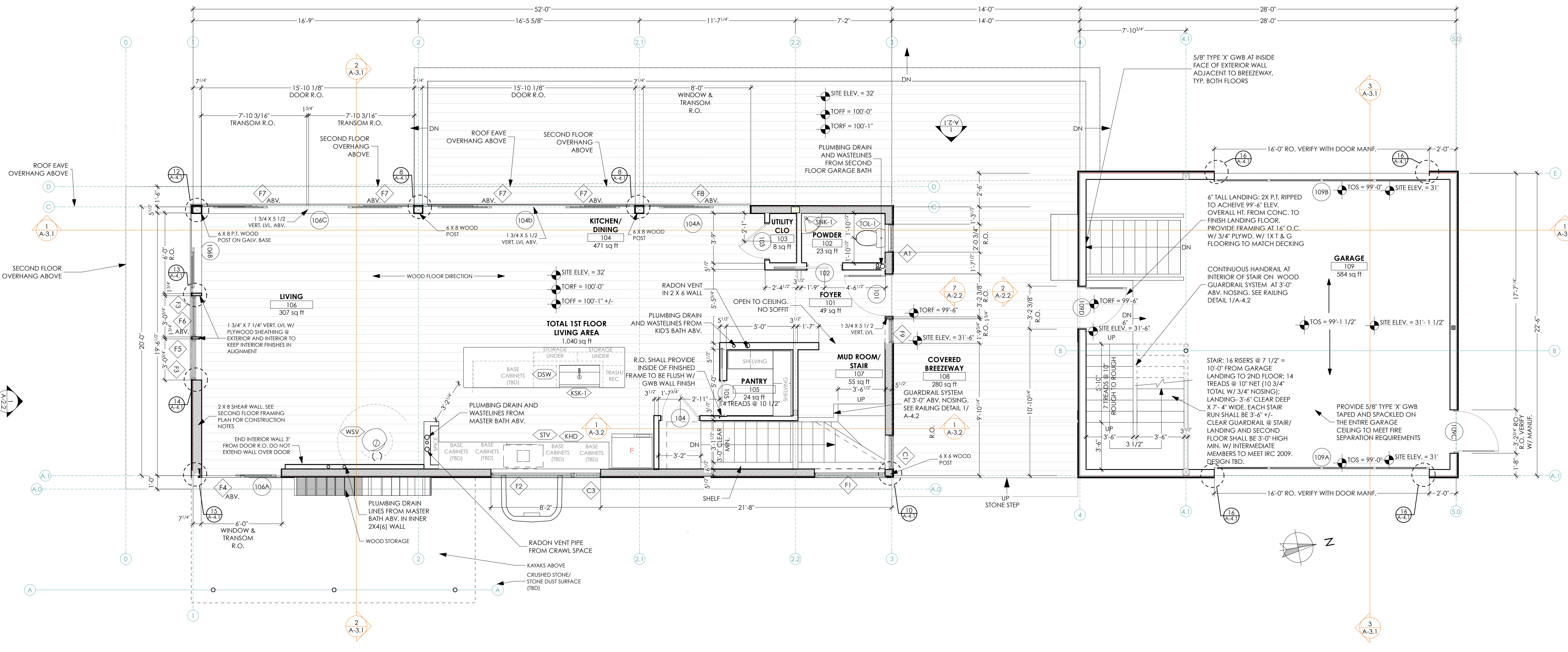


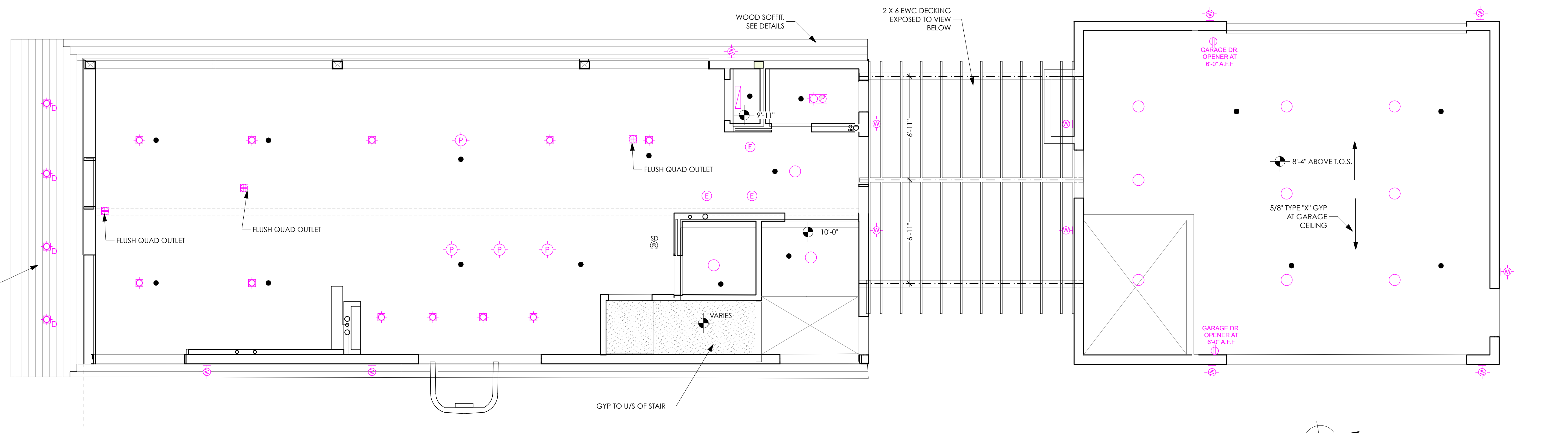
/Volumes/Network Files/C:\AB\PROJECTS\A RESIDENTIAL STUDIO\1 Current Projects\LUEDKE\DESIGN\DRAWINGS\5 CD\ARCHICAD\LUEDKE\_REV 8 Simple Eave.pln



1 1ST FLOOR PLAN  
SCALE: 1/4" = 1'-0"

- FLOOR PLAN GENERAL NOTES**
- All Dimensions are based on structural core. For example, from face of stud to face of stud, or from concrete to concrete or combination thereof unless noted otherwise.
- SYMBOL LEGEND**
- WINDOW: See Window Schedule A-0.3
  - DOOR: See Interior Door Schedule A-0.2; See Exterior Door Schedule A-0.3
  - APPLIANCE/EQUIPMENT/PLUMBING FIXTURE: See Schedule A-0.2
  - SECTION/DETAIL MARKER - Refer to Drawing: DETAIL NUMBER SHEET NUMBER
  - ELEVATION MARKER - Refer to Drawing: DETAIL NUMBER SHEET NUMBER
  - STRUCTURAL GRID
  - FROST PROTECTED HOSE BIB

- REFLECTED CEILING PLAN GENERAL NOTES**
- All Ceiling elevation points on RCP's are from top of finished floor of the room where taken. On the 2nd floor the ceiling is vaulted and sloped with the underside of the roof structure, all ceiling heights at those locations are approximate.
  - Portland Maine Building Code requires new single family residences to have an NFPA 13R Sprinkler System installed. See RCP for basis of design for sprinkler head locations, these are to be verified by a certified sprinkler contractor/installer. All sprinkler heads are to be fully-recessed. Garage space is unconditioned, sprinkler contractor to take appropriate measures.
    - = Sprinkler Head (Fully Recessed)
  - All Ceilings are gyp board unless noted otherwise
  - All Light fixtures are TBD by Architect and Design Build with Electrical Contractor. These will be included in forthcoming Interiors Drawing Set Package
  - MEP to be design-build by Contractor
  - Smoke Detectors and Carbon Monoxide Detectors are to be UL-listed and hardwired



2 1ST FLOOR REFLECTED CEILING PLAN  
SCALE: 1/4" = 1'-0"

**CALEB JOHNSON ARCHITECTS + BUILDERS**  
 265 MAIN STREET, SUITE 201 BIDDFORD, ME 04005  
 T: 207.283.8777 F: 207.283.8778 C:\A\ME

**STUDIO MANAGER:**  
 PROJECT ARCHITECT:

LICENSED ARCHITECT  
 CALIB M. JOHNSON  
 NO. 2919  
 STATE OF MAINE

ISSUE	DATE	DESCRIPTION

**CONSULTANTS:**  
 Aaron Jones, PE  
 77 Oak Street, Portland ME 04101  
 Matt Legere E.I.T.  
 matt@structuralinteg.com  
 207.774.4616

**DRAFTSPERSON:**  
 Patricia Boettje, AIA  
 DATE OF ISSUE:  
 3/1/17  
**PROJECT STATUS:**  
 Permit Set

**Luedke Residence**  
 James & Kathrine Luedke  
 Crescent Ave Great Diamond Island ME  
 04109

PROPOSED 1ST FLOOR PLANS  
**A-1.1**

CONSTRUCTION SET