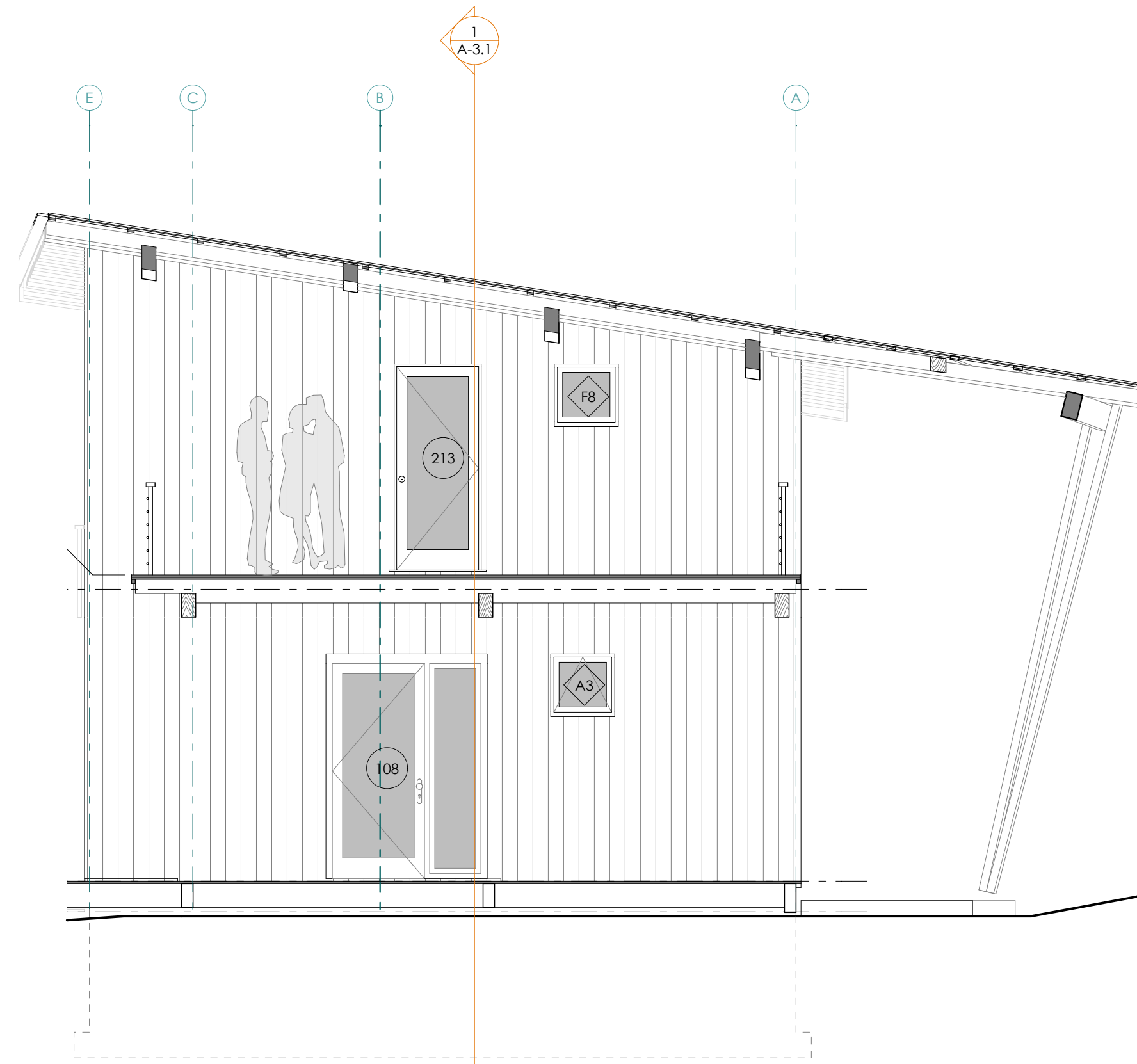
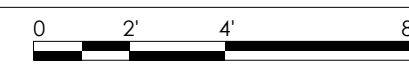
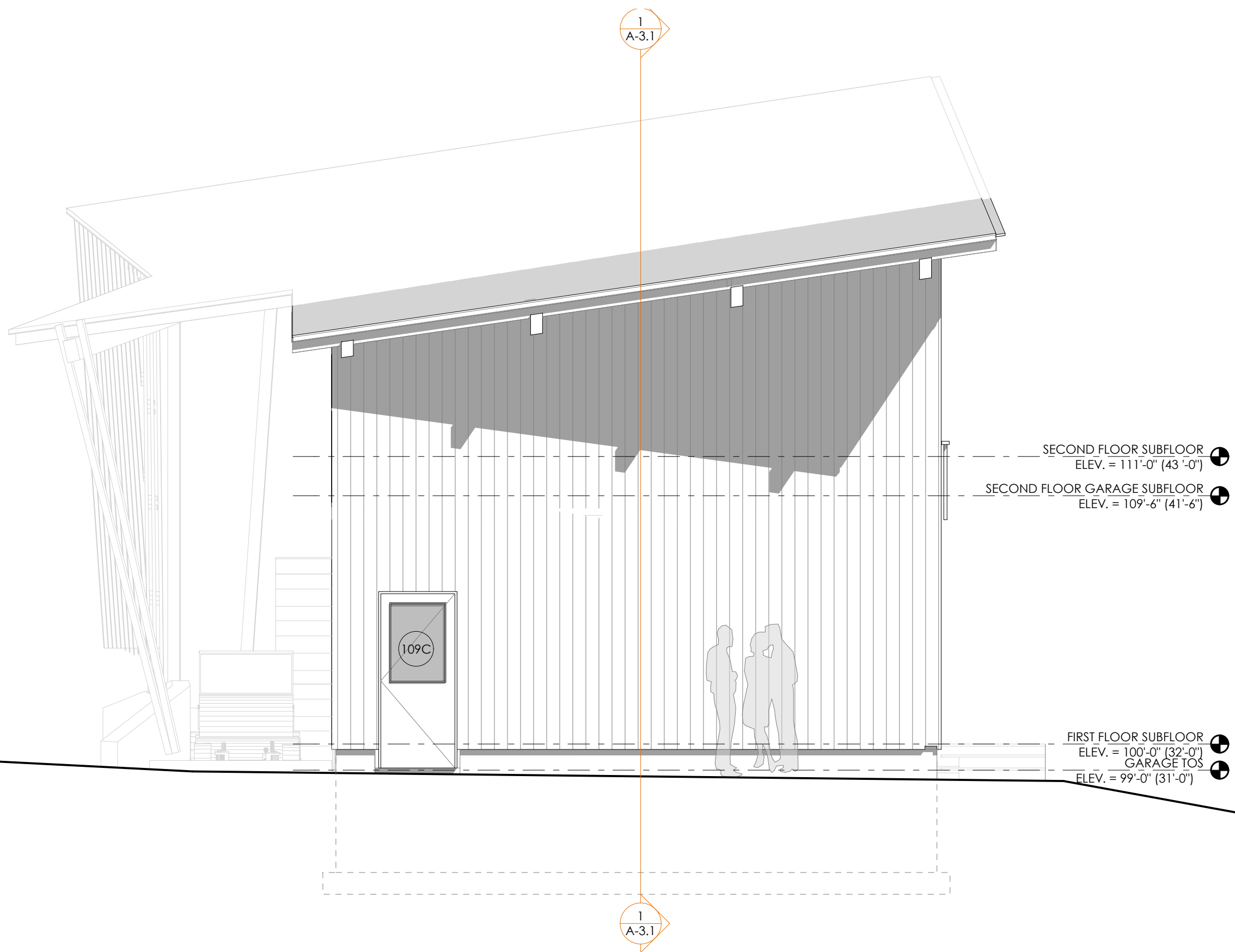


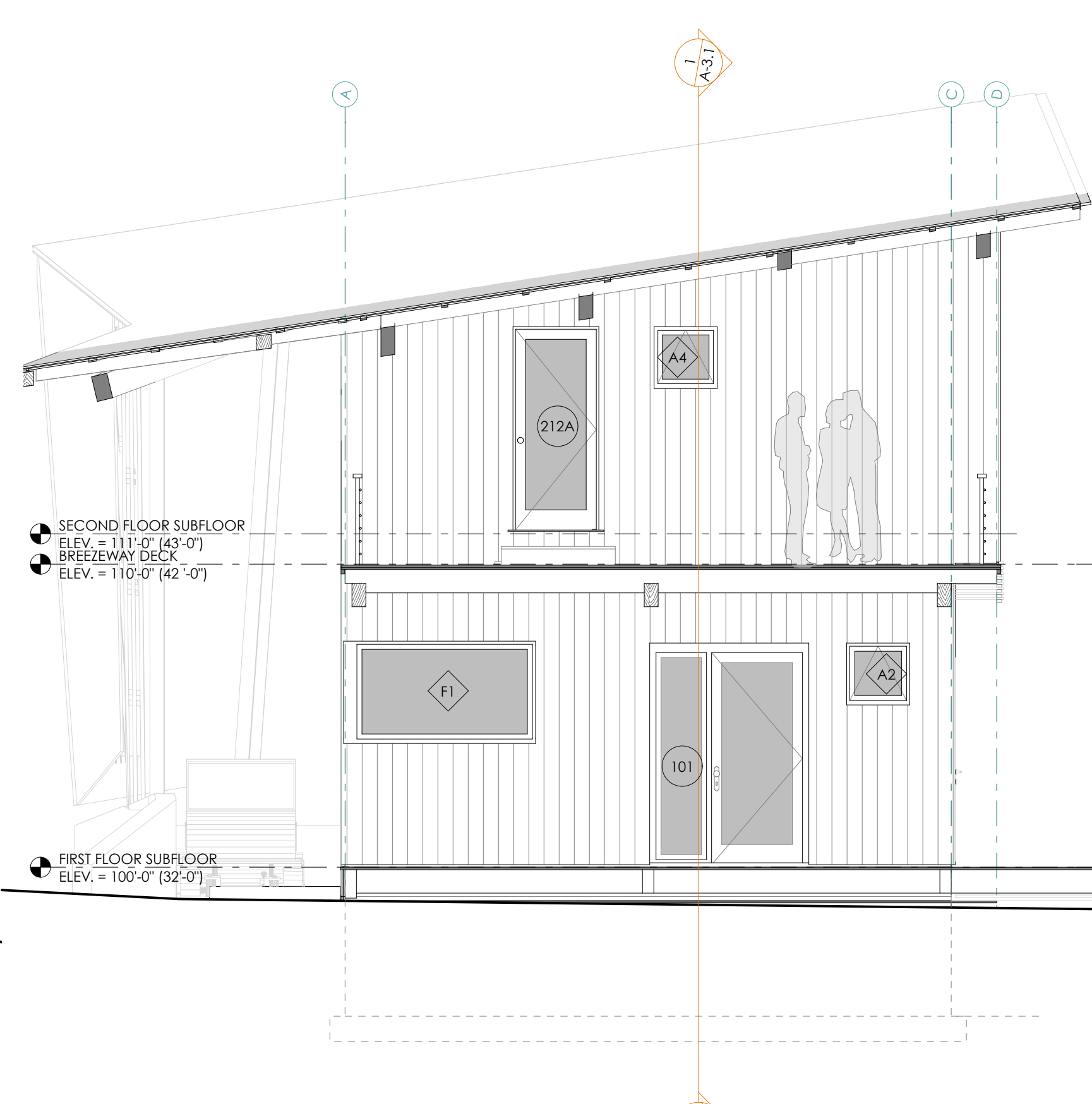
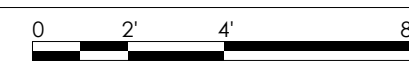
1 SOUTH ELEVATION
SCALE: 1/4" = 1'-0"



2 SOUTH ELEVATION AT BREEZEWAY (GOOD)
SCALE: 1/4" = 1'-0"



3 NORTH ELEVATION
SCALE: 1/4" = 1'-0"



4 NORTH ELEVATION AT BREEZEWAY
SCALE: 1/4" = 1'-0"



View at Back Looking North from Woods at Skrim



View Looking To South at the Entry



View of Back Looking East at Ocean Corner



CHANGES THIS ISSUE	ID	DESCRIPTION

SUBMISSIONS:	DATE

CONSULTANTS:
Aron Jones, PE
77 Oak Street, Portland ME 04101
Matt Legere E.I.T.
mat@structuralinteg.com
207-774-4616

DRAFTER:
Patrice Boettje, AIA
DATE OF ISSUE:
3/1/17
PROJECT STATUS:
Permit Set

Luedke Residence
James & Katharine Luedke
Crescent Ave Great Diamond Island ME
04109

PROPOSED ELEVATIONS AND 3D VIEWS
PERMIT SET

A-2.2