

1 2ND FLOOR PLAN
SCALE: 1/4" = 1'-0"

FLOOR PLAN GENERAL NOTES

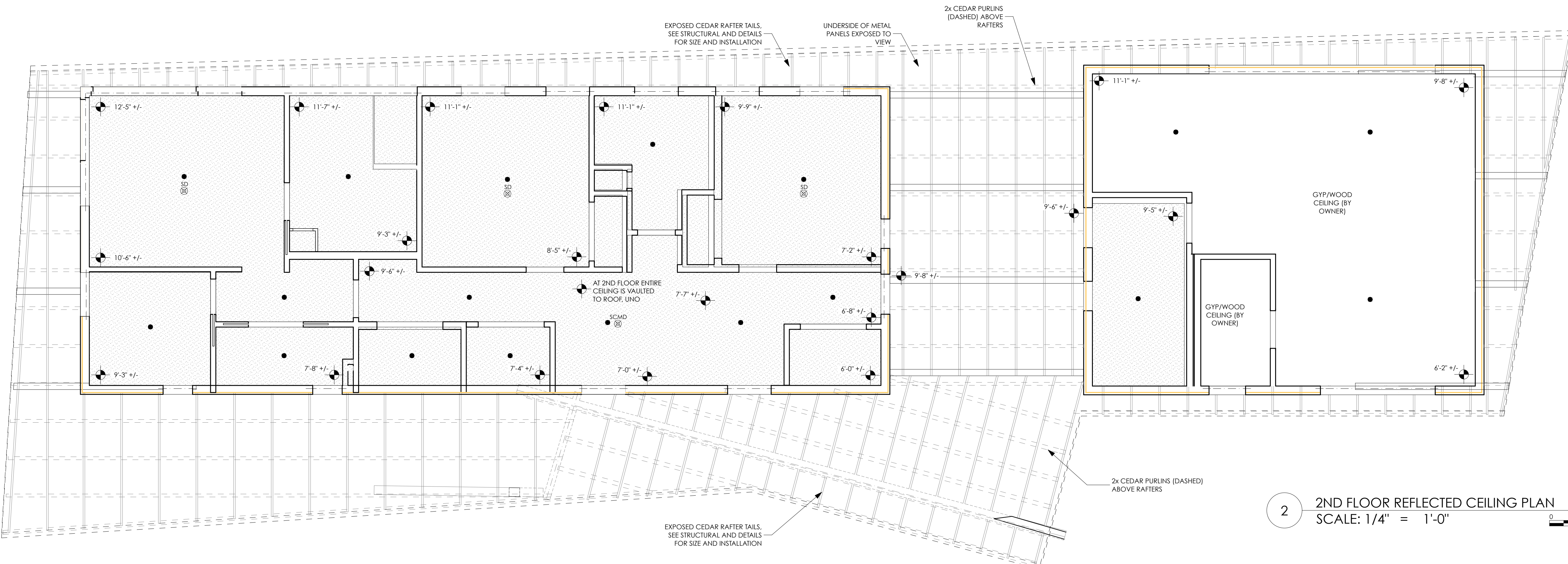
1. All Dimensions are based on structural core. For example, from face of stud to face of stud, or from concrete to concrete or combination thereof unless noted otherwise.

SYMBOL LEGEND

- ◊ WINDOW
See Window Schedule A-0.3
- ⊗ DOOR
See Interior Door Schedule A-0.2
See Exterior Door Schedule A-0.3
- ◊ TAG-1 APPLIANCE/EQUIPMENT/PLUMBING FIXTURE
See Schedule A-0.2
- 1 A-3.1 SECTION/DETAIL MARKER - Refer to Drawing
DETAIL NUMBER
SHEET NUMBER
- A-2.1 ELEVATION MARKER - Refer to Drawing
DETAIL NUMBER
SHEET NUMBER
- 4.1 STRUCTURAL GRID

REFLECTED CEILING PLAN GENERAL NOTES

1. All Ceiling elevation points on RCP's are from top of finished floor of the room where taken. On the 2nd floor the ceiling is vaulted and sloped with the underside of the roof structure. All ceiling heights at those locations are approximate.
2. Portland Maine Building Code requires new single family residences to have an NFPA 13R Sprinkler System installed. See RCP for basis of design for sprinkler head locations, these are to be verified by a certified sprinkler contractor/installer. All sprinkler heads are to be fully-recessed. Garage space is unconditioned, sprinkler contractor to take appropriate measures.
 - = Sprinkler Head (Fully Recessed)
3. All Ceilings are gyp board unless noted otherwise
4. All Light fixtures are TBD by Architect and Design Build with Electrical Contractor. These will be included in forthcoming Interiors Drawing Set Package
5. MEP to be design-build by Contractor
6. Smoke Detectors and Carbon Monoxide Detectors are to be UL-listed and hardwired
 - SD Smoke Detector
 - SCMD Combination Smoke Detector and CO Detector



2 2ND FLOOR REFLECTED CEILING PLAN
SCALE: 1/4" = 1'-0"

CHANGES THIS ISSUE	ISSUE	DATE	DESCRIPTION

SUBMISSIONS	ISSUE	DATE

CONSULTANTS:	DATE

CONTRACTOR:	DATE

DRAFTER/PERSON: Patricia Boettner, AIA
DATE OF ISSUE: 3/11/17
PROJECT STATUS: Permit Set

CONTRACTOR: Acron Jones, PE
77 Oaks Street, Portland ME 04101
Matt Legere E.I.T.
matt@structuralinteg.com
207-774-4616