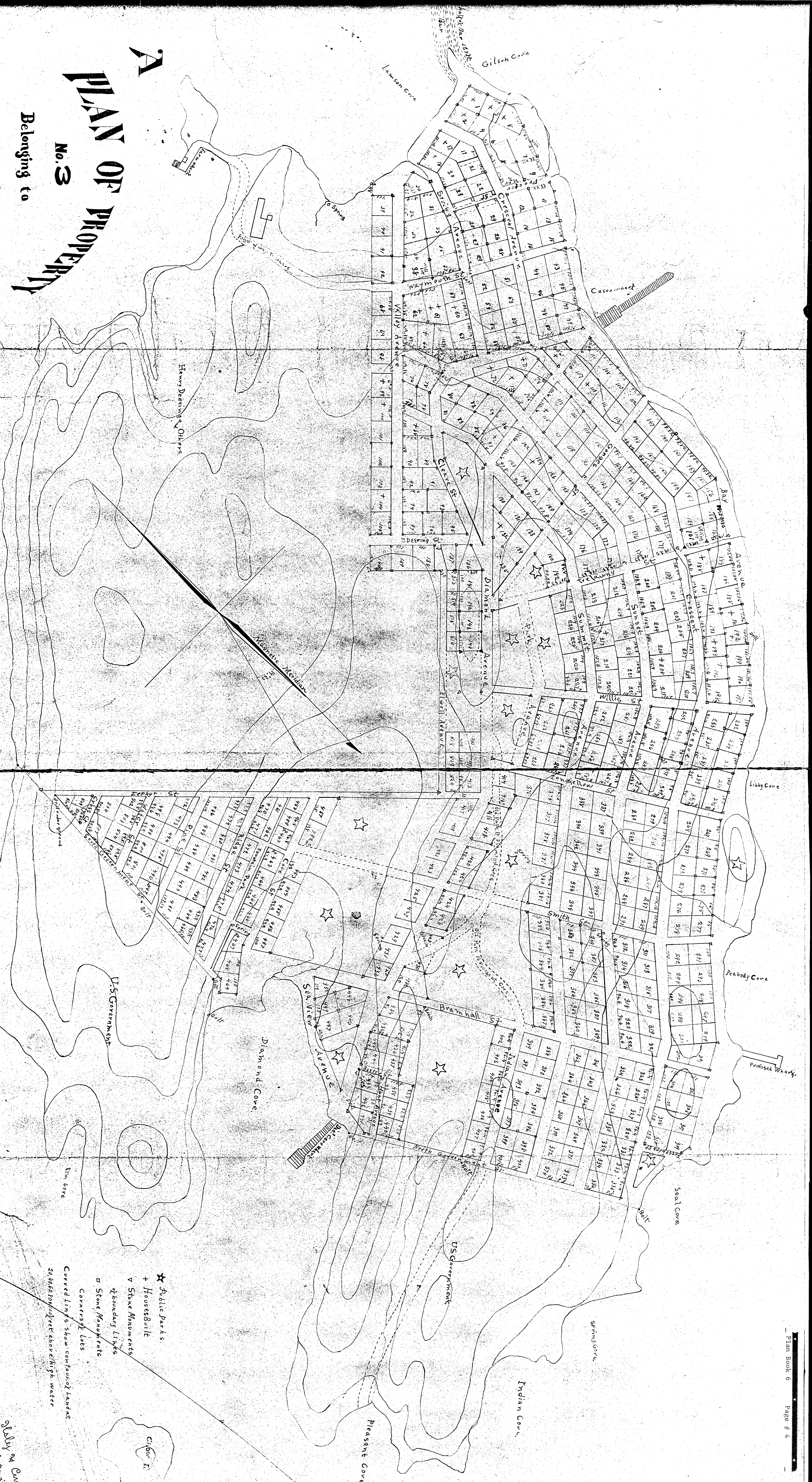


DIAMOND ISLAND ASSOCIATION. CASCO BAY. ME.

A PLAN OF PROPERTY
No. 3
 Belonging to
 the



- ★ Public Parks
 - + House Built
 - ▽ Stone Monuments
 - Boundary Lines
 - ▣ Stone Monuments
 - Corner Lots
- Curved Lines show contours of land
 20' above high water

Scale 200' to 1" in
 July 24, 1958
 Carl S. Sargent
 S. M. S. Sargent
 Deeds 1958