



**MARK  
MUELLER  
ARCHITECTS**  
A.I.A.

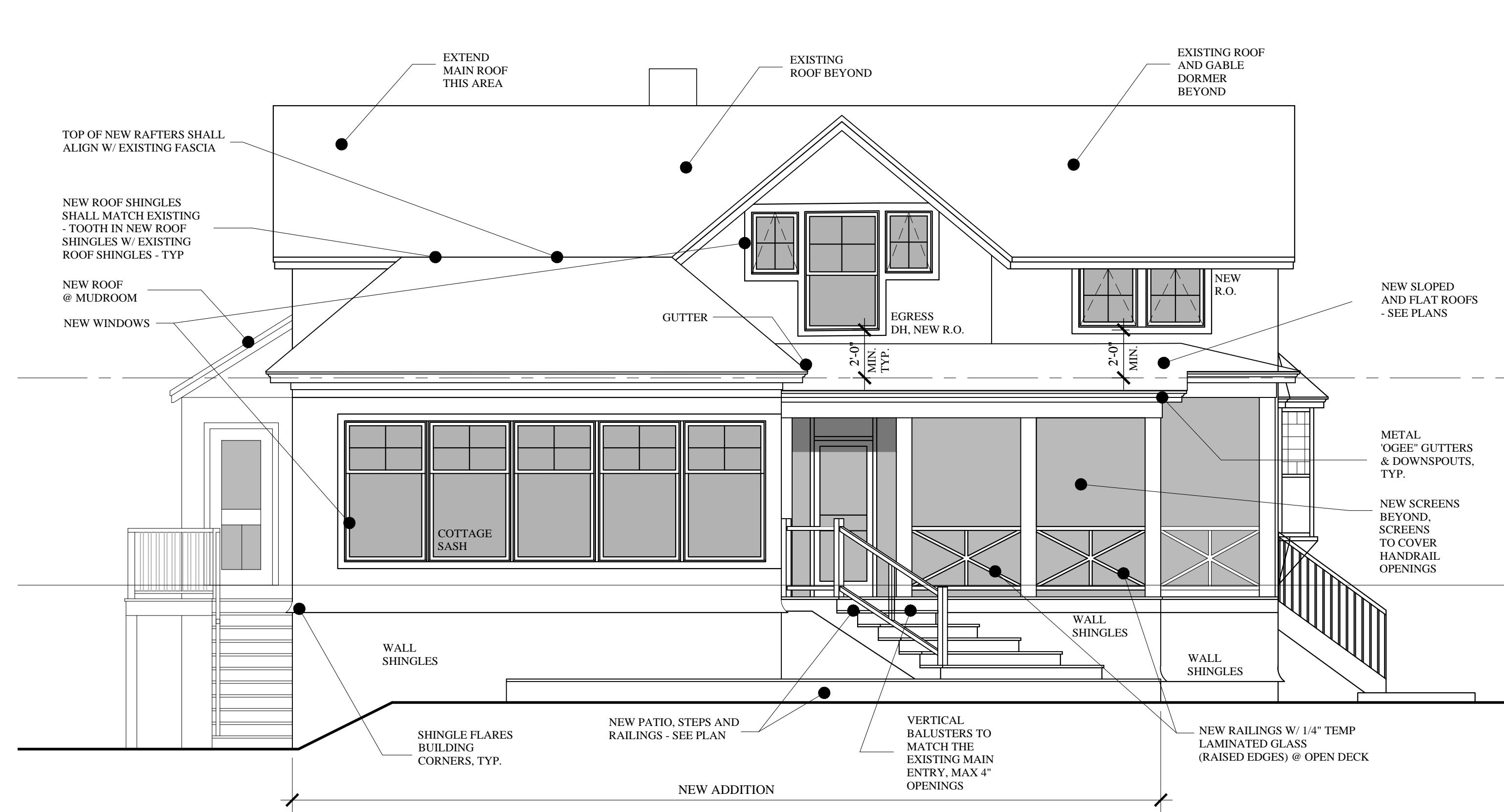
100 Commercial Street  
Suite 205  
Portland, Maine 04101  
Phone: 207.774.9057  
Email: rfm@muellerarchitects.com

© COPYRIGHT 2015  
MARK MUELLER ARCHITECTS

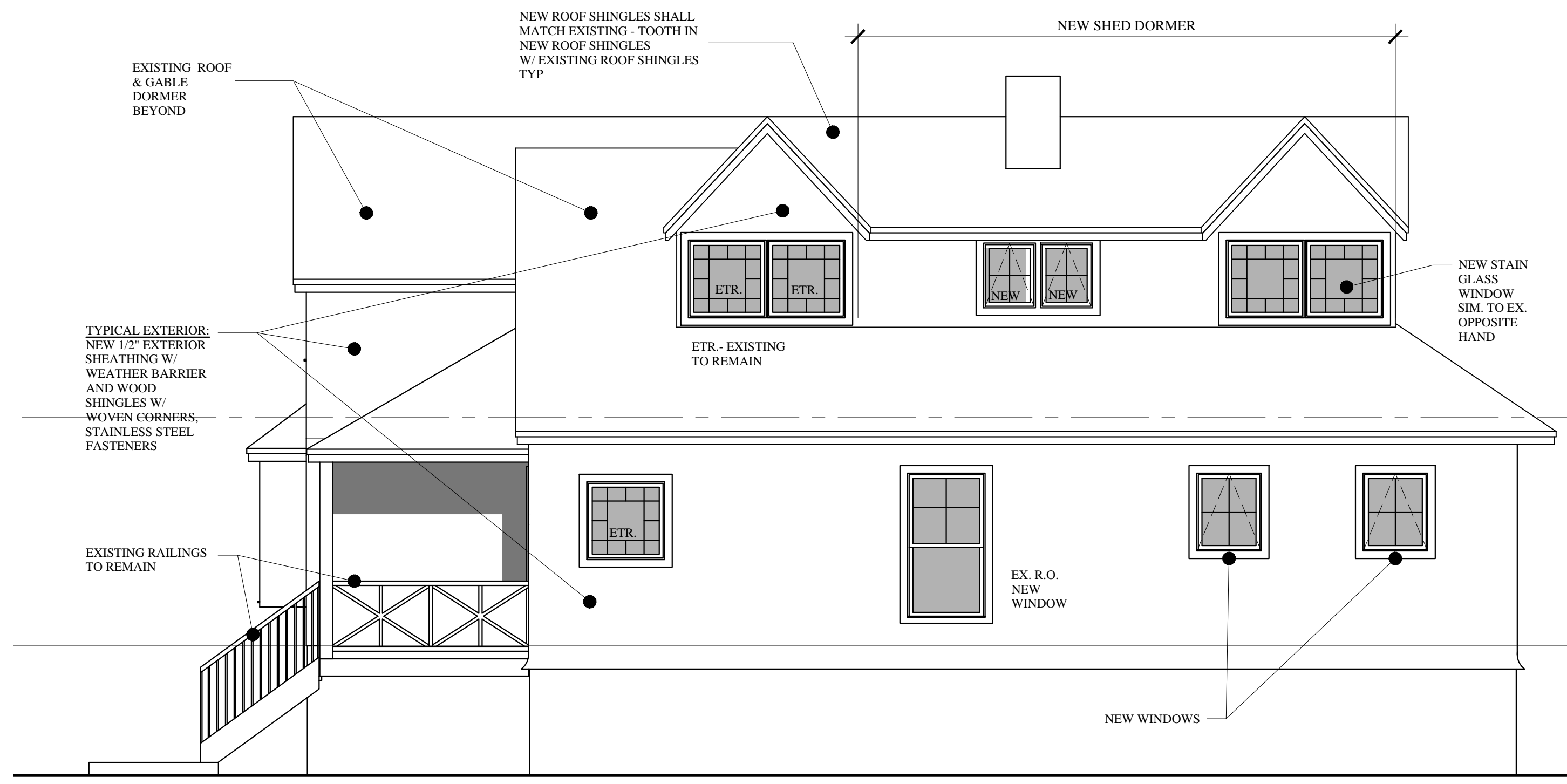
**ZAJKOWSKI ISLAND HOUSE**  
40 SPRING AVENUE  
PORTLAND, MAINE 04102

EXTERIOR ELEVATIONS

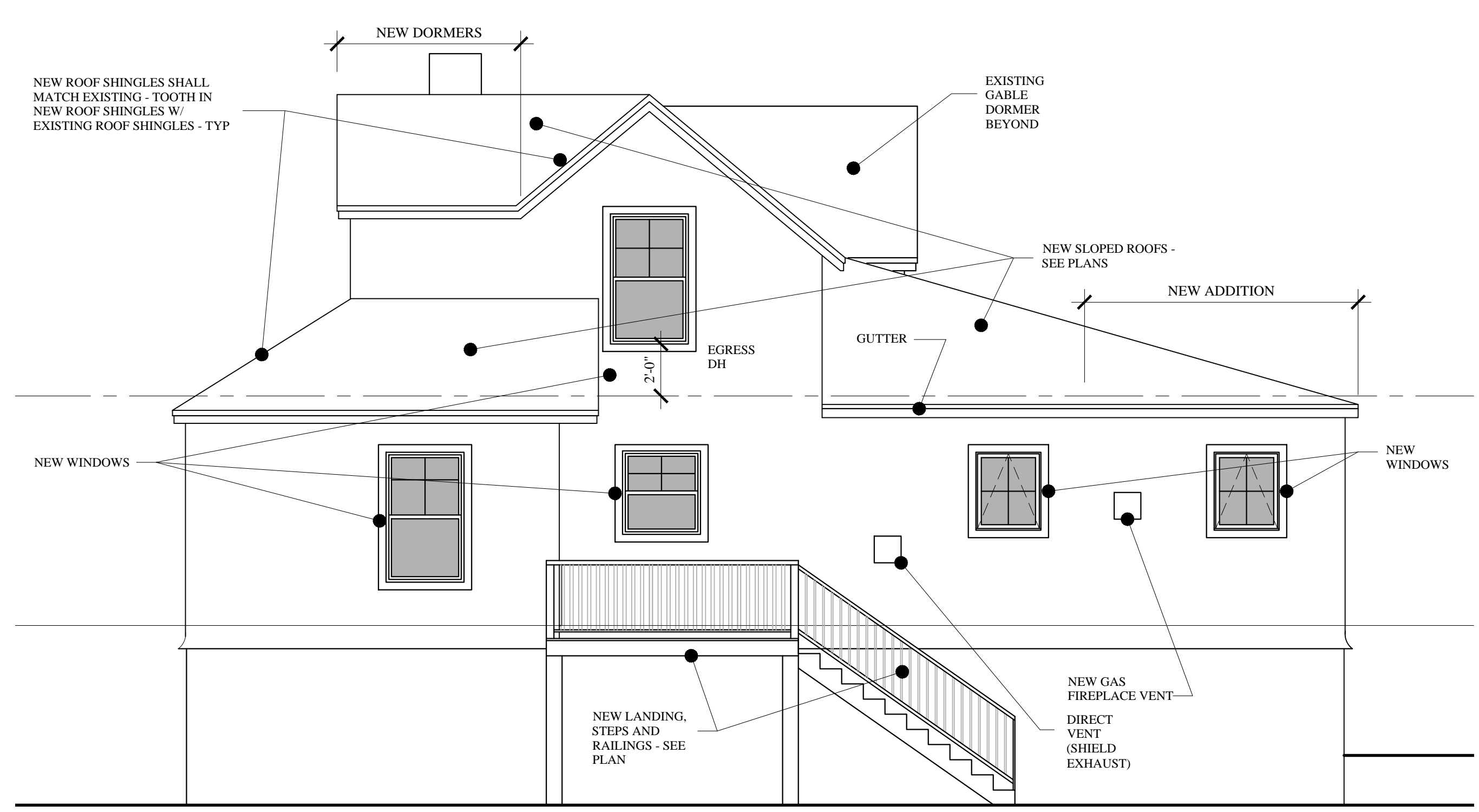
REVISIONS	DATE
PROJECT	ZAJKOWSKI RESIDENCE
DRAWN BY	MLM/TJD
CHECK BY	MLM



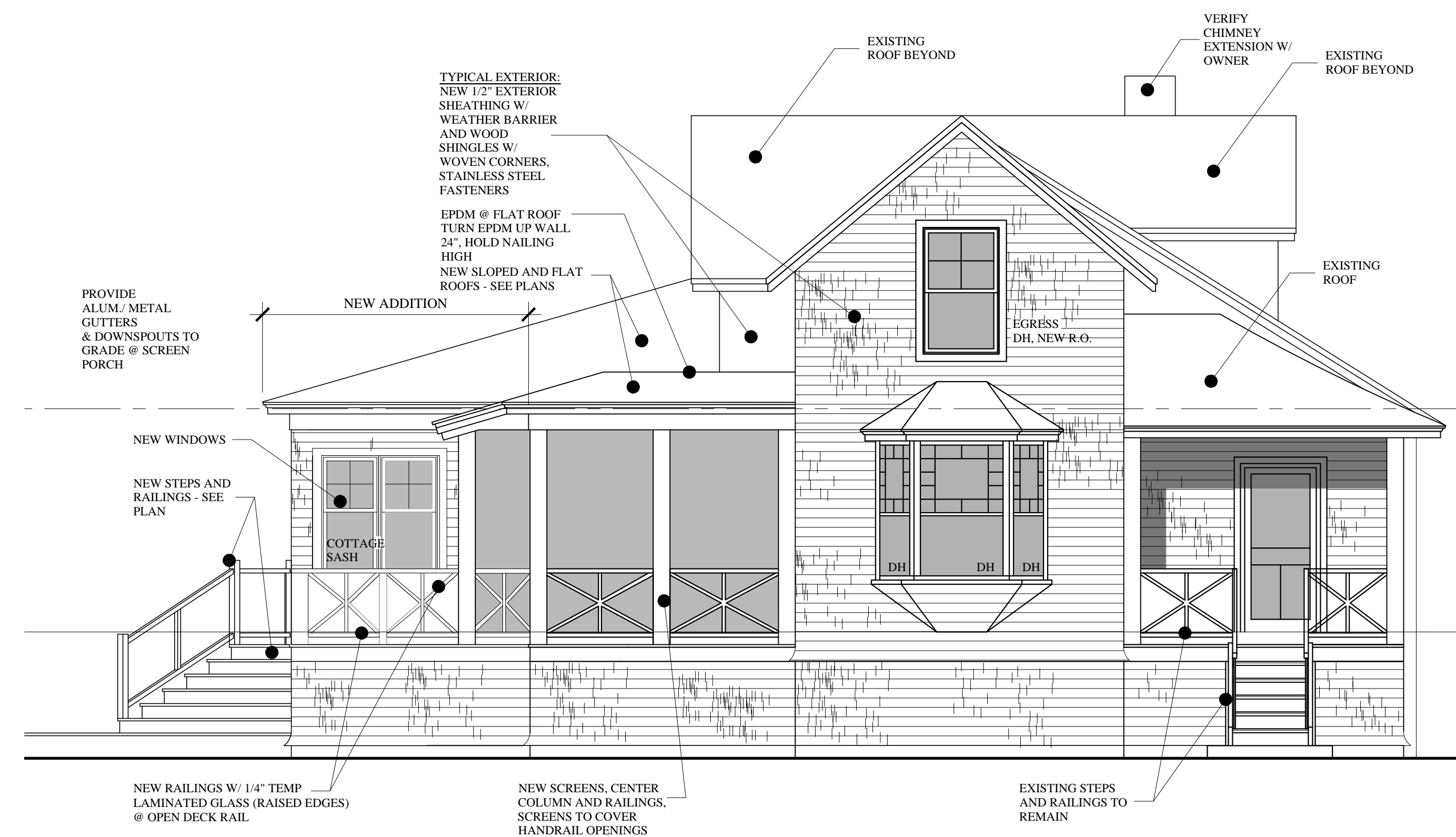
**LEFT ELEVATION**  
SCALE: 1/4"=1'-0"



**RIGHT ELEVATION**  
SCALE: 1/4"=1'-0"



**REAR ELEVATION**  
SCALE: 1/4"=1'-0"



**FRONT ELEVATION**  
SCALE: 1/4"=1'-0"

GREAT DIAMOND ISLAND

BUILDING PERMIT SET : AUGUST 27, 2015