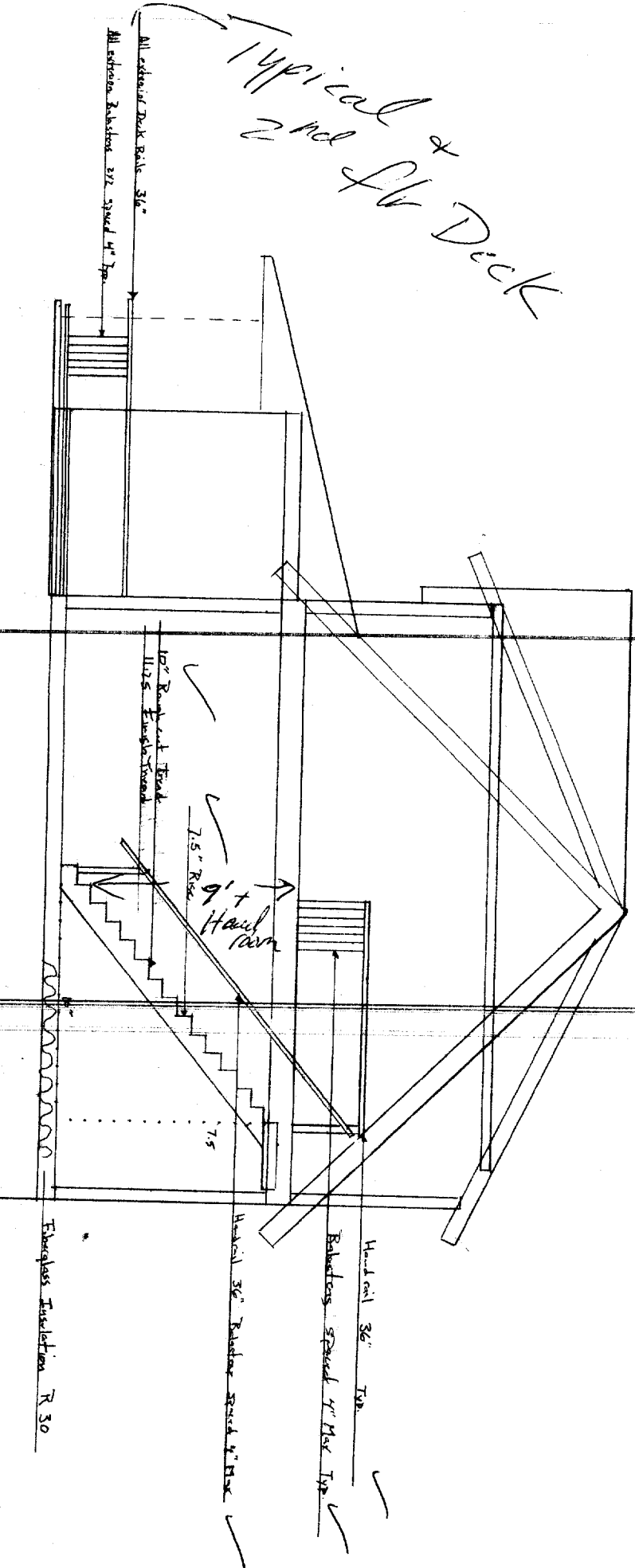

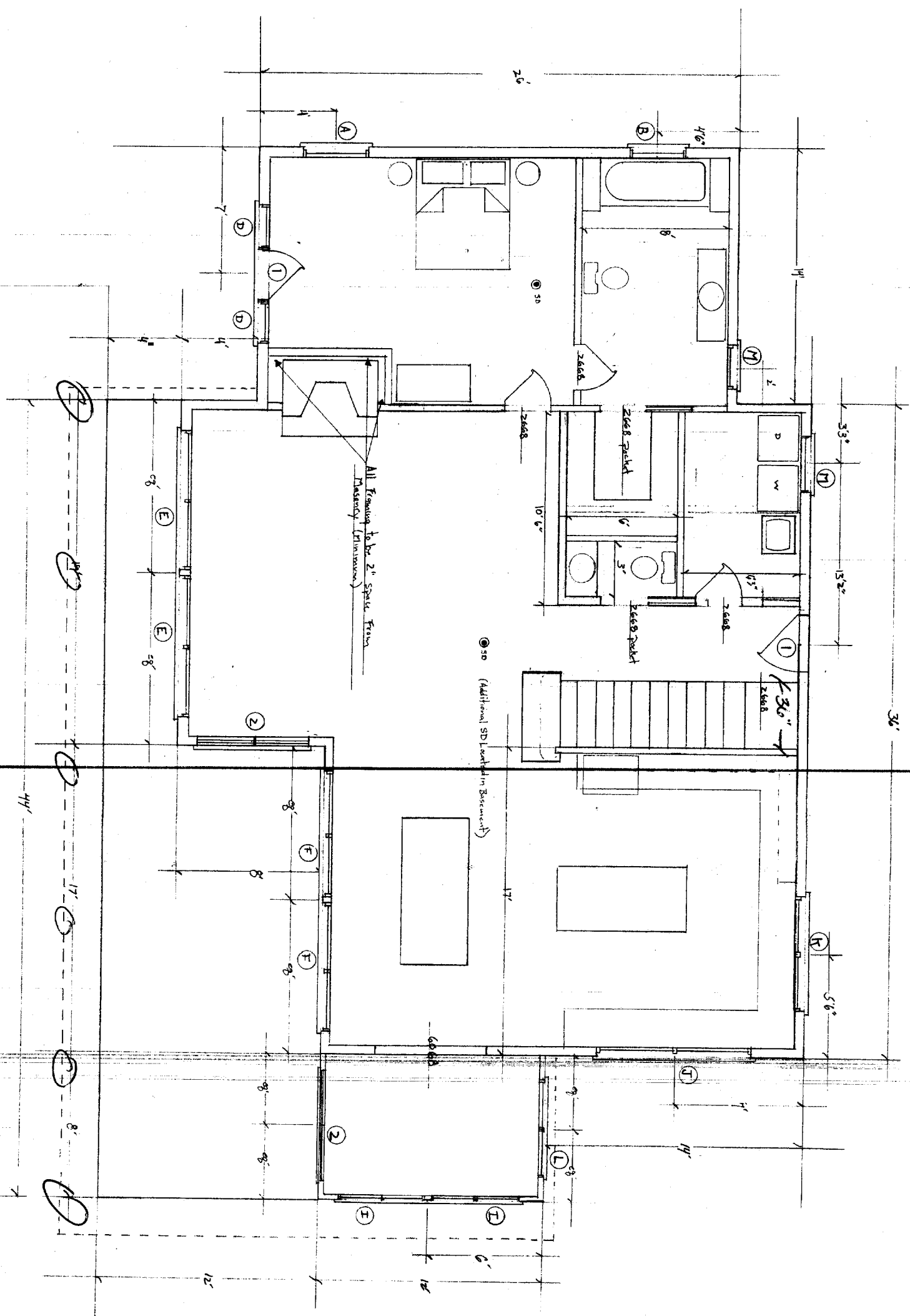


Typical 2nd Flr Deck




LEDDY HOUSER ASSOCIATES
 429 Preble Street, South Portland, Maine 04106
 Phone 207-767-0903 Fax 767-0961
 McAndrews / Parichild Cottage
 Great Diamond Island
 Scale 1/2" = 1' Date 3/27/2006
 Cross Section

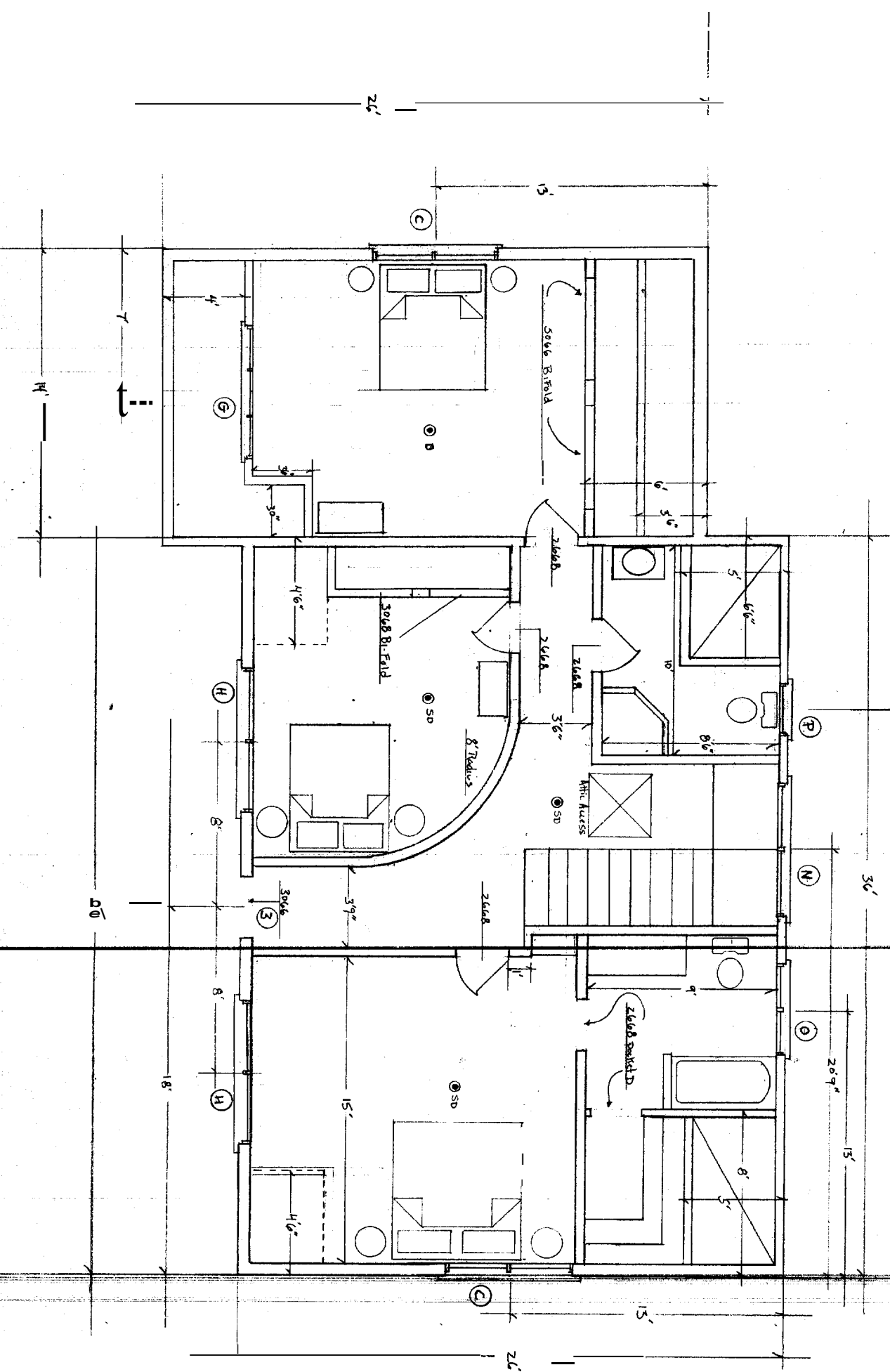


DEPT. OF BUILDING INSPEC
CITY OF PORTLAND, ME
MAY 12 2006
RECEIVED



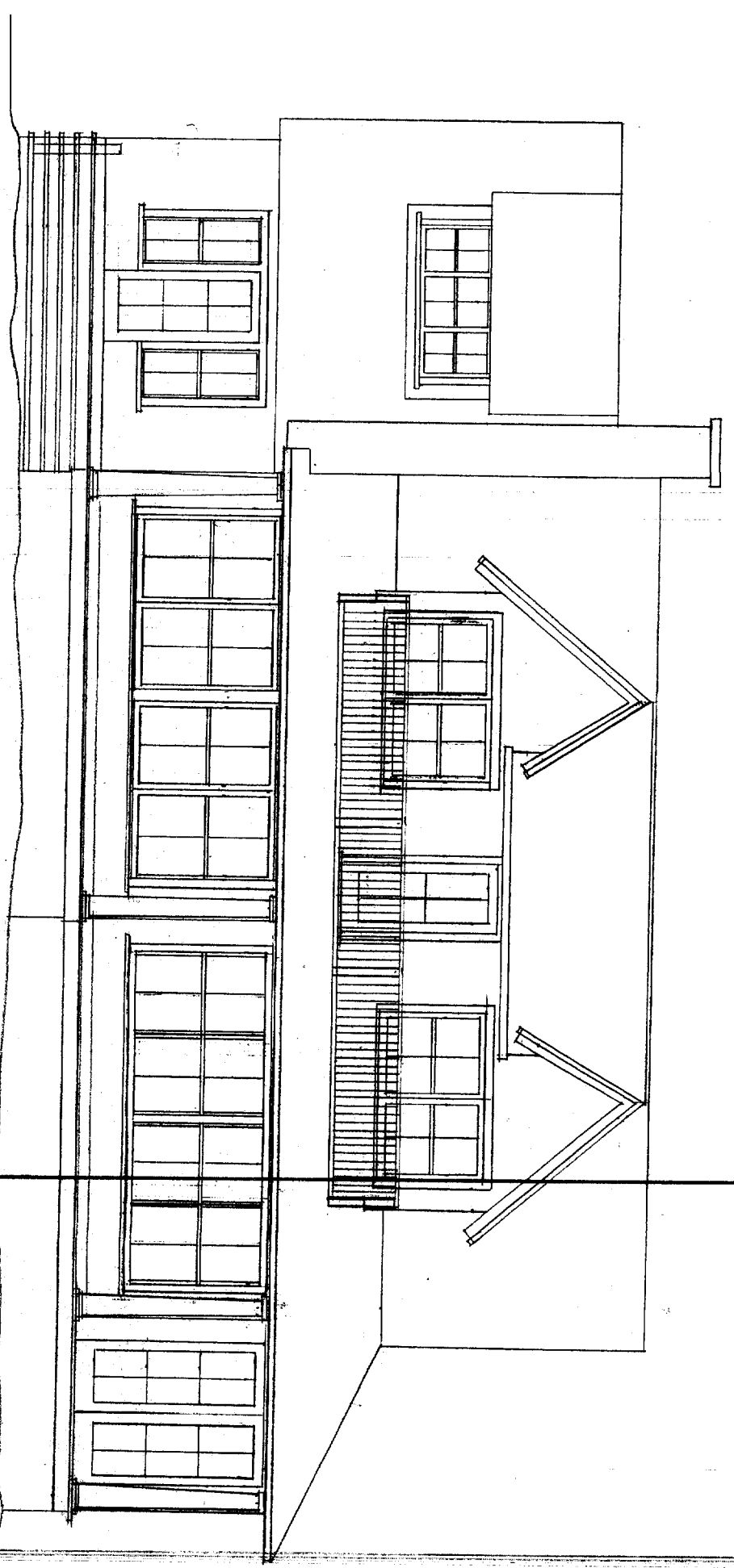
LEDDY HOUSE
ASSOCIATES

429 Preble Street South Portland, Maine 04106
Phone 207-767-0903 Fax 767-0961
McAndrews / Fairchild Cottage
Great Diamond Island
Scale 1/4" = 1' Date 3/27/2006
First Floor Plan



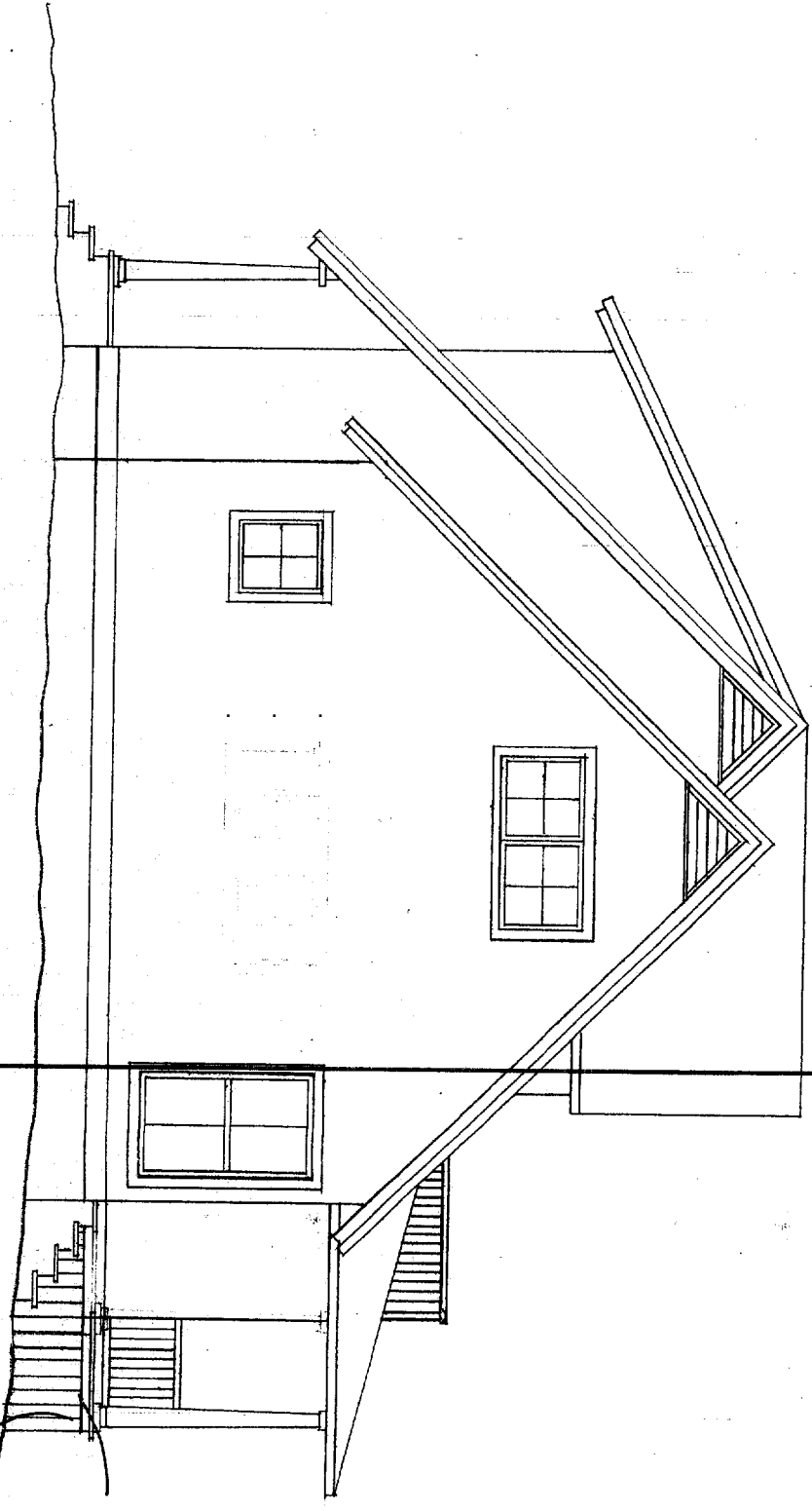
LEDDY HOUSER
ASSOCIATES

429 Peble Street South Portland, Maine 04106
Phone 207-767-0903 Fax 767-0961
McAndrews / Parthild Cottage
Great Diamond Island
Scale 1/4" = 1' Date 3/27/2006
Second Floor Plan



LEDDY HOUSER
ASSOCIATES

429 Preble Street South Portland, Maine 04106
Phone 207-767-0903 Fax 767-0961
McAndrews / Fairchild Cottage
Great Diamond Island
Scale 1/4" = 1' Date 3/27/2006
West Elevation



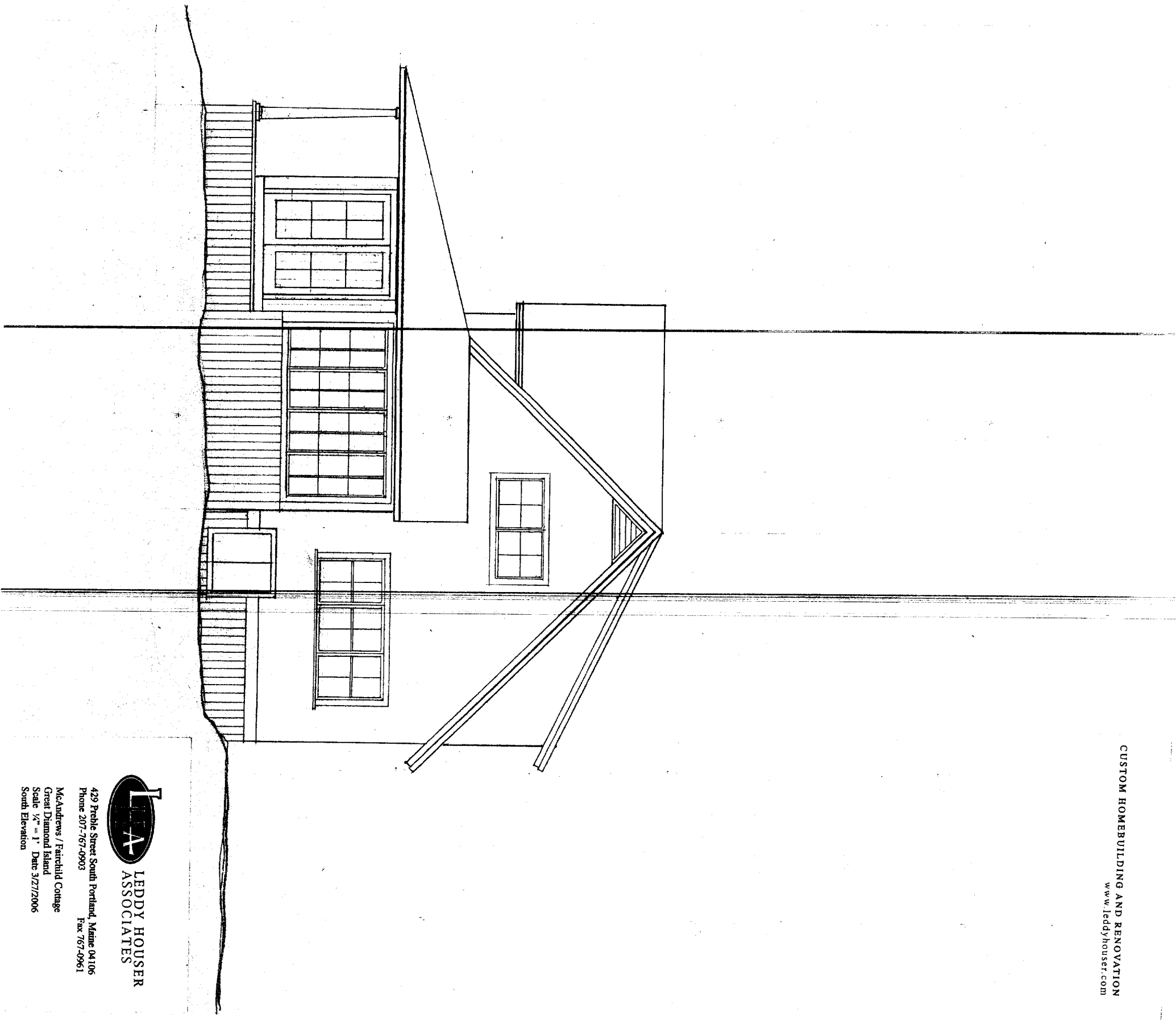
2-2x10's
Carry beam

2x8-16 1" OC
5x10's

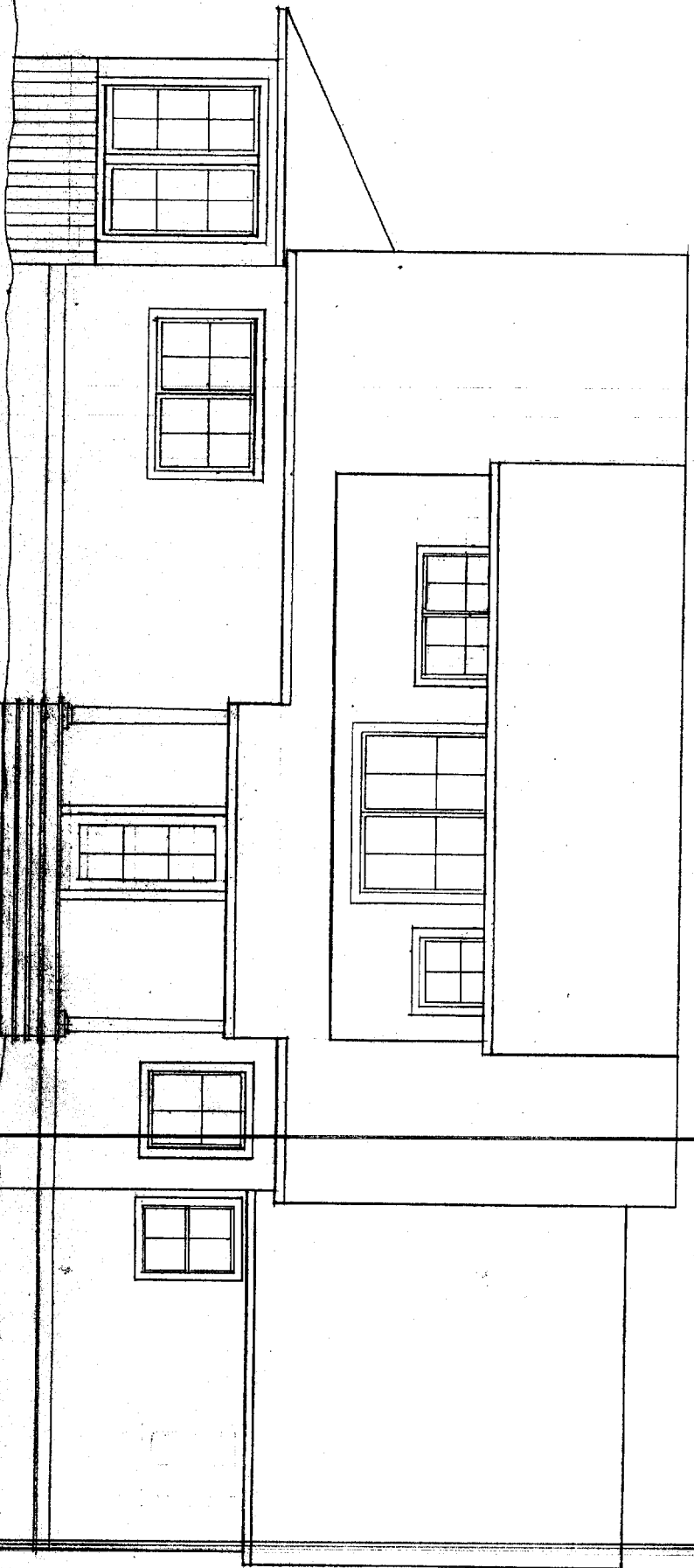


LEDDY HOUSER
ASSOCIATES

429 Presble Street South Portland, Maine 04106
Phone 207-767-0903 Fax 767-0961
McAndrews / Fairchild Cottage
Great Diamond Island
Scale 1/4" = 1' Date 3/27/2006
North Elevation

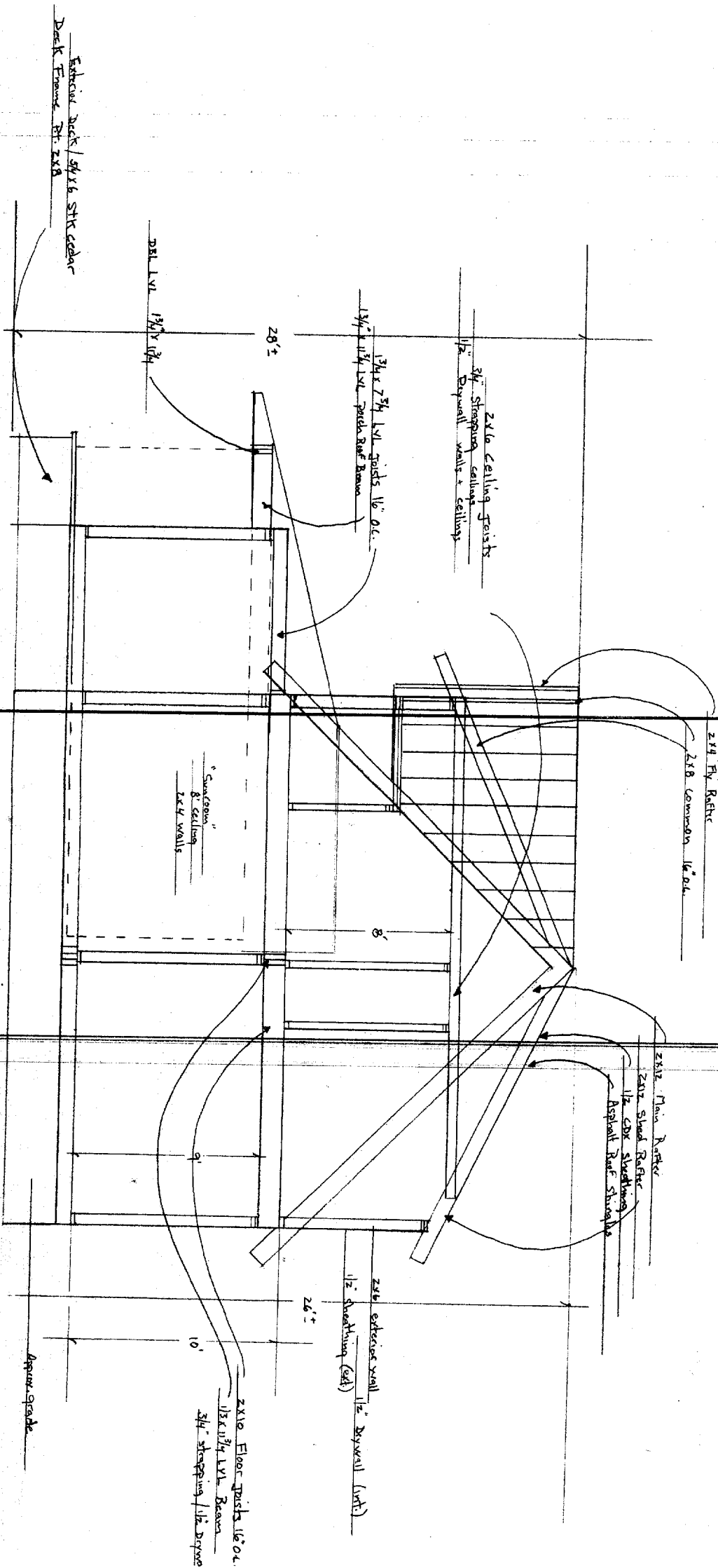


429 Pebble Street South Portland, Maine 04106
Phone 207-767-0903 Fax 767-0961
McAndrews / Fairchild Cottage
Great Diamond Island
Scale 1/4" = 1' Date 3/27/2006
South Elevation



LEDDY HOUSER
ASSOCIATES

429 Peble Street South Portland, Maine 04106
Phone 207-767-0903 Fax 767-0961
McAndrews / Fairchild Cottage
Great Diamond Island
Scale 1/2" = 1' Date 3/27/2006
East Elevation



Exterior Deck / 5/8\"/>
 Deck Frame Br. 2x8

2nd Lvl 1 3/4\"/>
 1 3/4\"/>

28'±

1 3/4\"/>
 1 3/4\"/>

2x10 Ceiling Joists
 3/4\"/>
 Drywall walls + ceilings

2x4 Ry Rafter
 2x8 Common 16\"/>

8'
 Sunroom
 8' ceiling
 2x4 walls

2x12 Main Rafter
 2x12 Shed Rafter
 1/2\"/>
 Asphalt Roof Shingles

2x6 exterior wall 1/2\"/>
 Sheathing (ext)

24'±

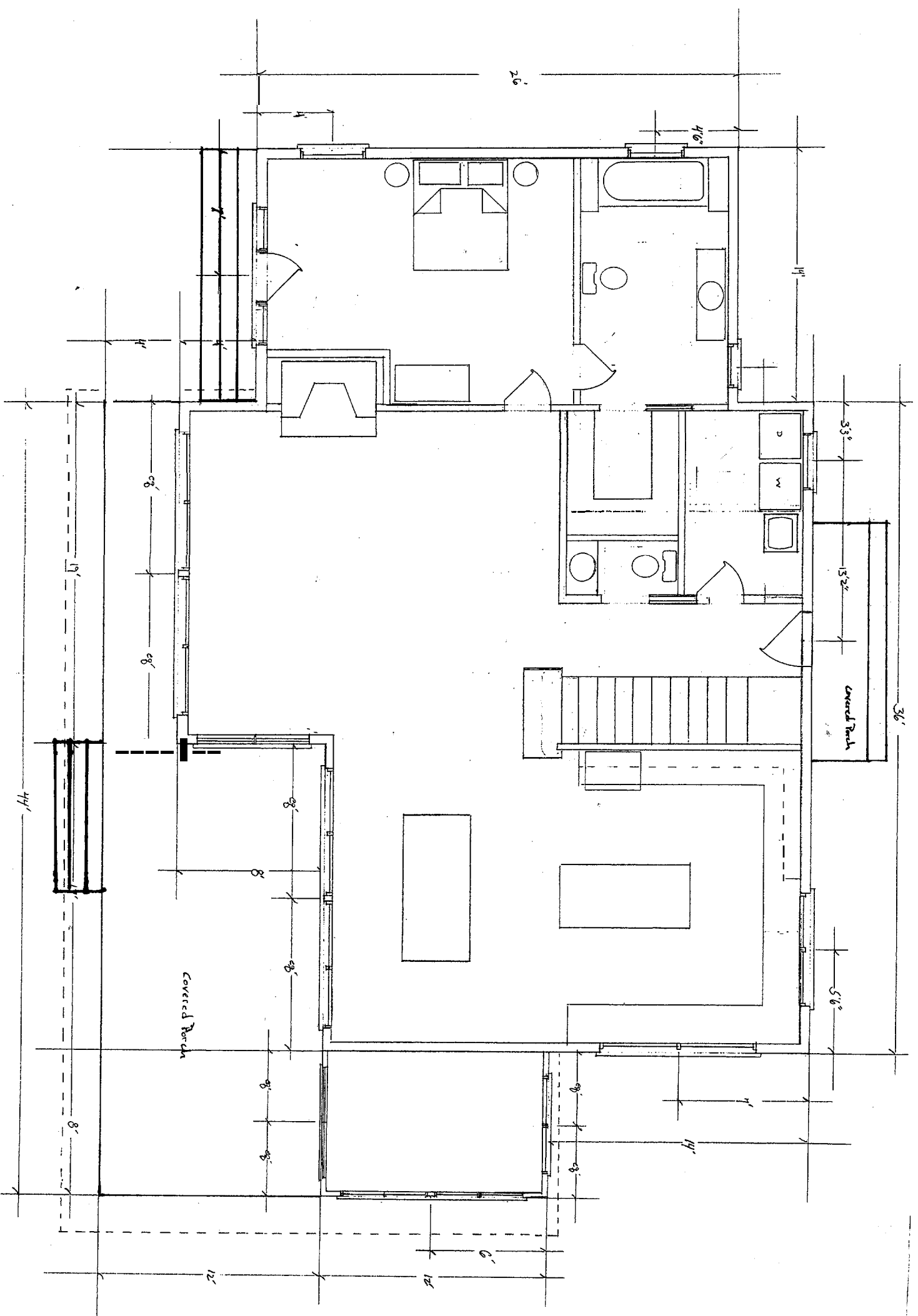
2x10 Floor Joists 16\"/>
 1 1/2\"/>
 LVL Beams
 3/4\"/>
 Sheathing 1/2\"/>

Asphalt grade



LEDY HOUSER
 ASSOCIATES

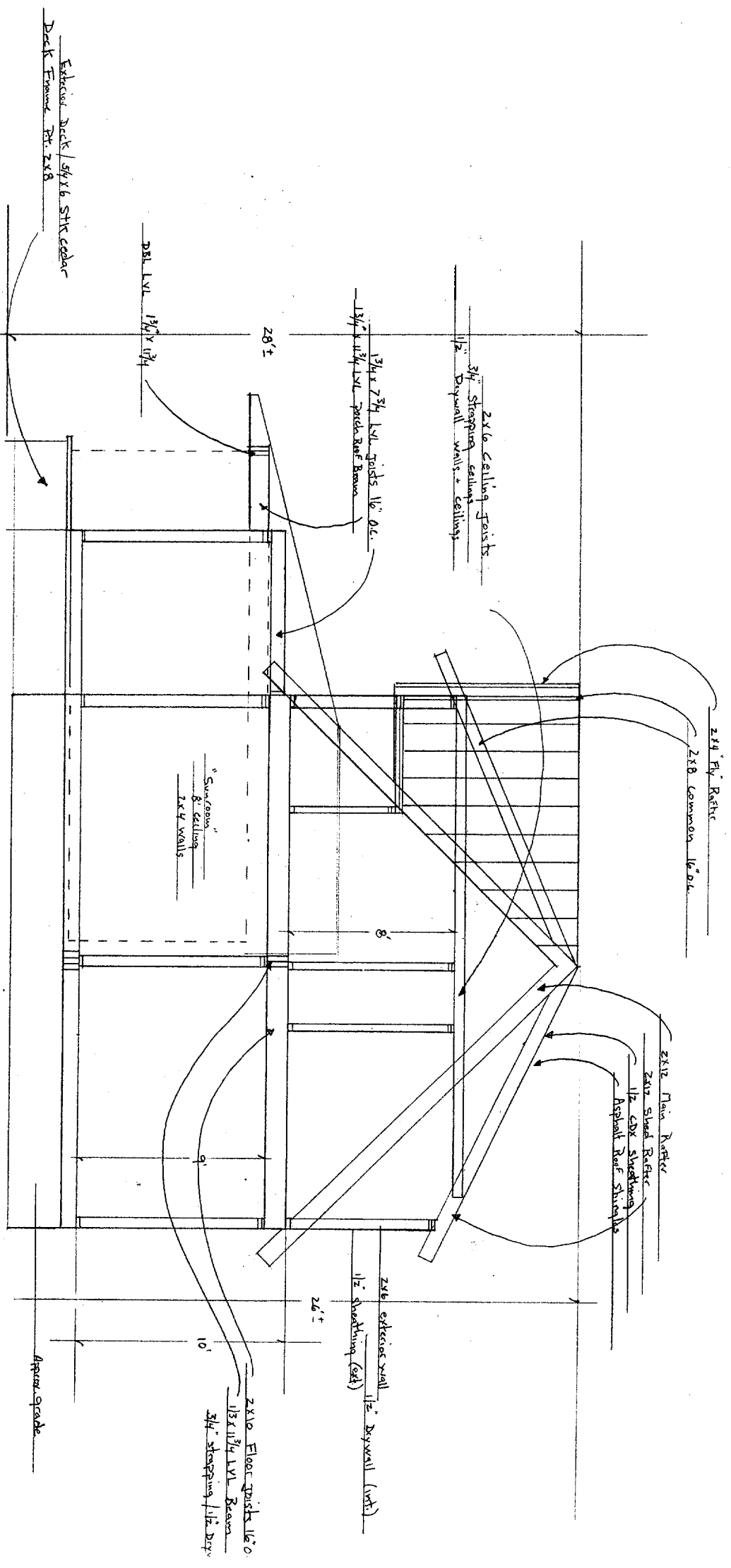
429 Preble Street South Portland, Maine 04106
 Phone 207-767-0903 Fax 767-0961
 McAndrews / Fairchild Cottage
 Great Diamond Island
 Scale 1/4\"/>
 = 1' Date 3/27/2006
 Cross Section



DEPT. OF BUILDING INSPECTION
 CITY OF PORTLAND, ME
 APR 24 2006
 RECEIVED

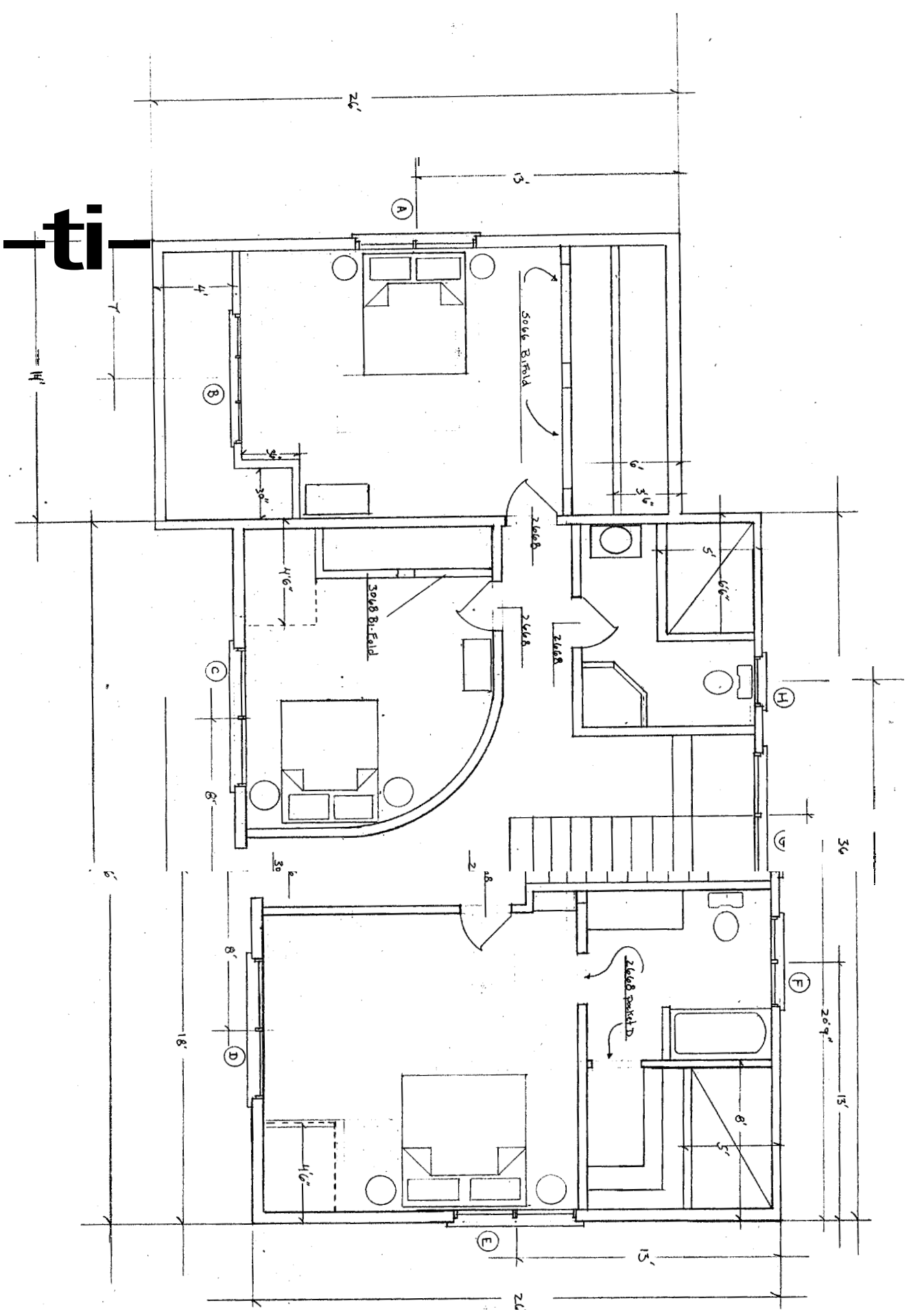


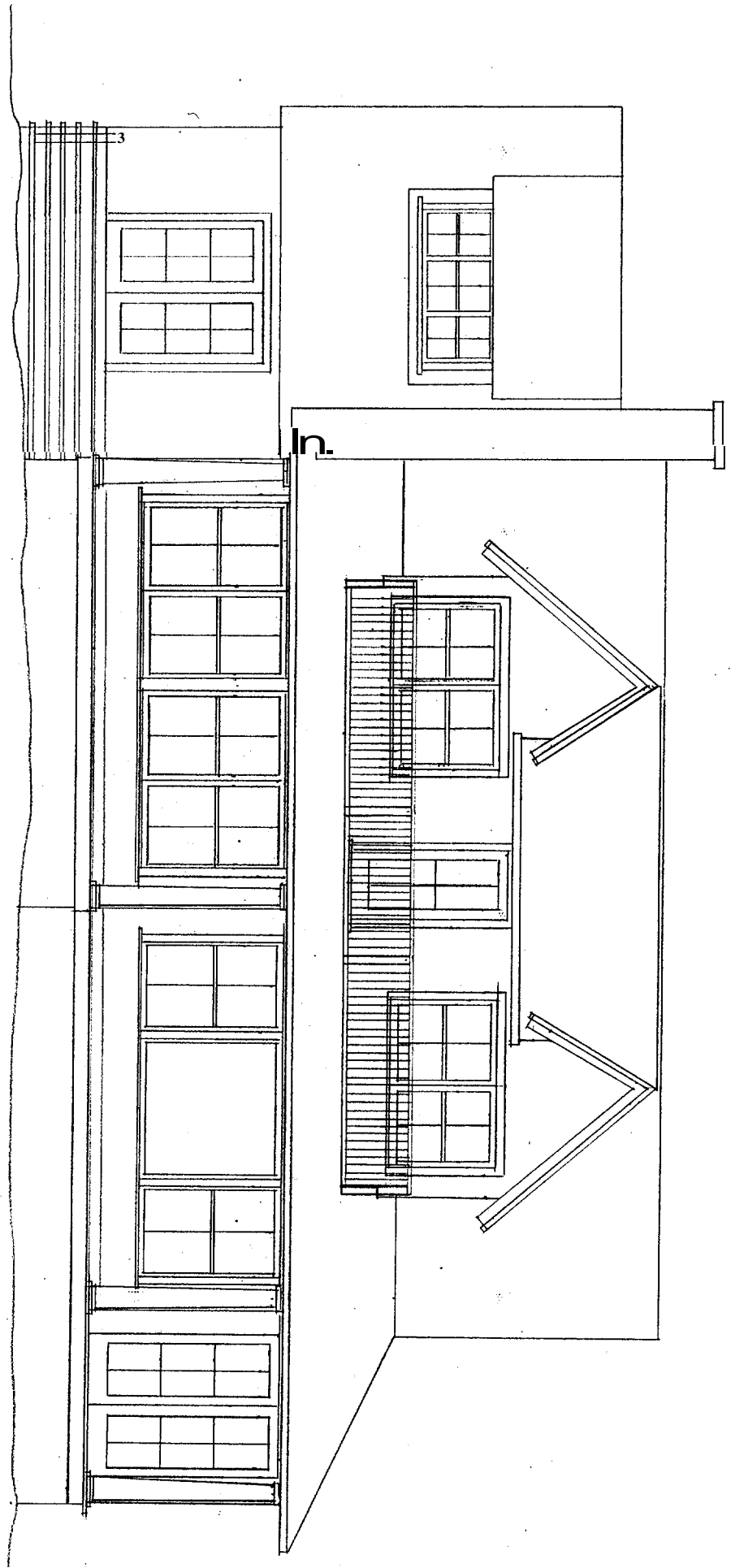
LED DY HOUSER ASSOCIATES
 429 Preble Street South Portland, Maine 04106
 Phone 207-767-0903 Fax 767-0961
 McAndrews / Fairchild Cottage
 Great Diamond Island
 Scale 1/4" = 1' Date 3/27/2006
 First Floor Plan



LEDDY HOUSER
 ASSOCIATES

429 Peble Street South Portland, Maine 04106
 Phone 207-767-0903 Fax 767-0961
 McAndrews / Parichild Cottage
 Great Diamond Island
 Scale 1/2" = 1' Date 3/27/2006
 Cross Section





429 Preble Street South Portland, Maine 04106
Phone 207-767-0903 Fax 767-0961
McAndrews / Fairchild Cottage
Great Diamond Island
Scale 1/4" = 1' Date 3/27/2006
West Elevation