

OWNER:

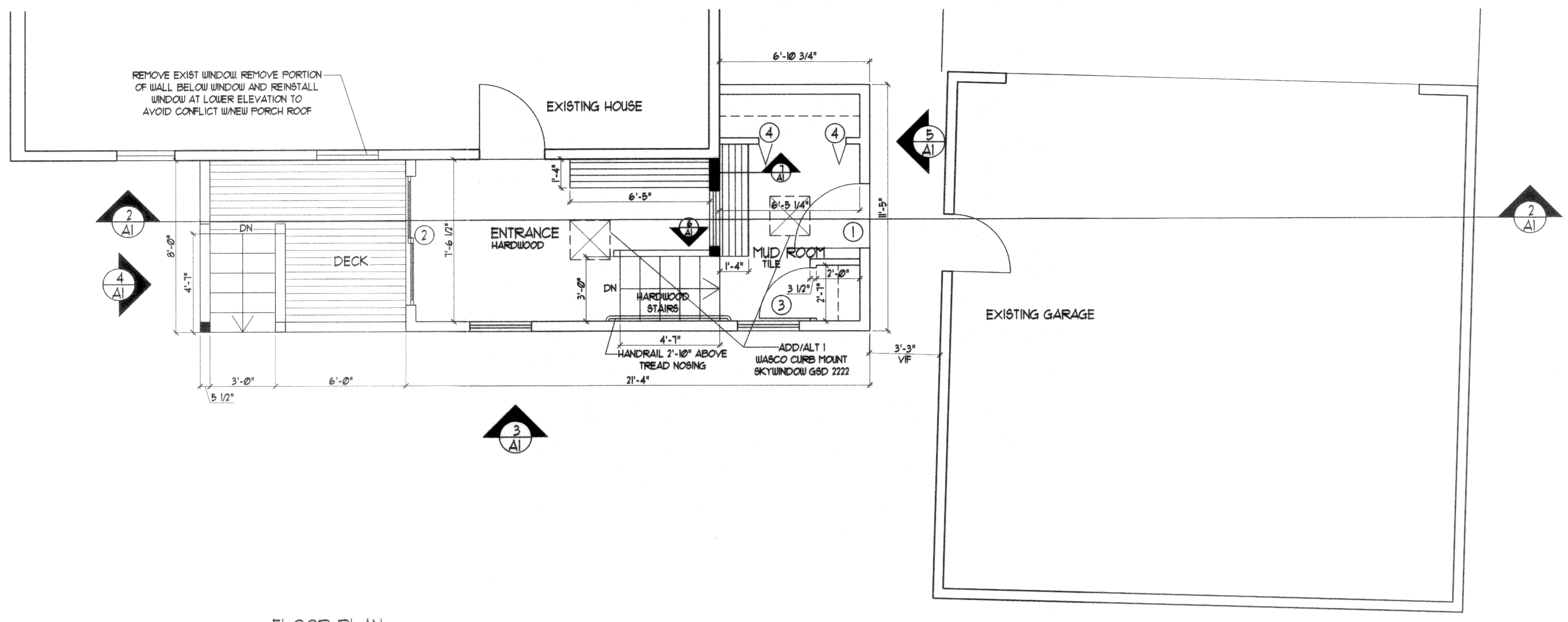
ARCHETYPE, P.A.
ARCHITECTS

48 Union Wharf Portland, Maine 04101
(207) 772-6022 Fax (207) 772-4056

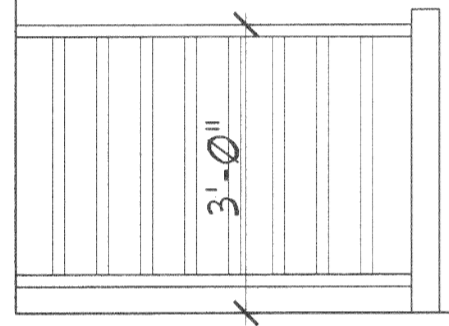
Project:
Schair-Rigoletti
105 Noyes St.
PORTLAND, ME

Date: OCTOBER 2009
Scale: AS NOTED
Revisions:

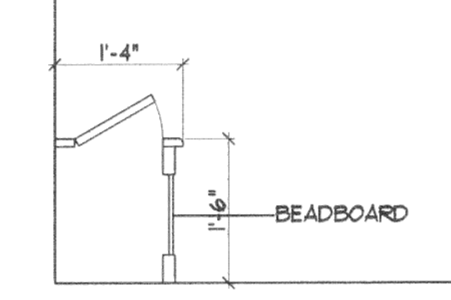
FLOORPLAN
SECTION
ELEVATIONS



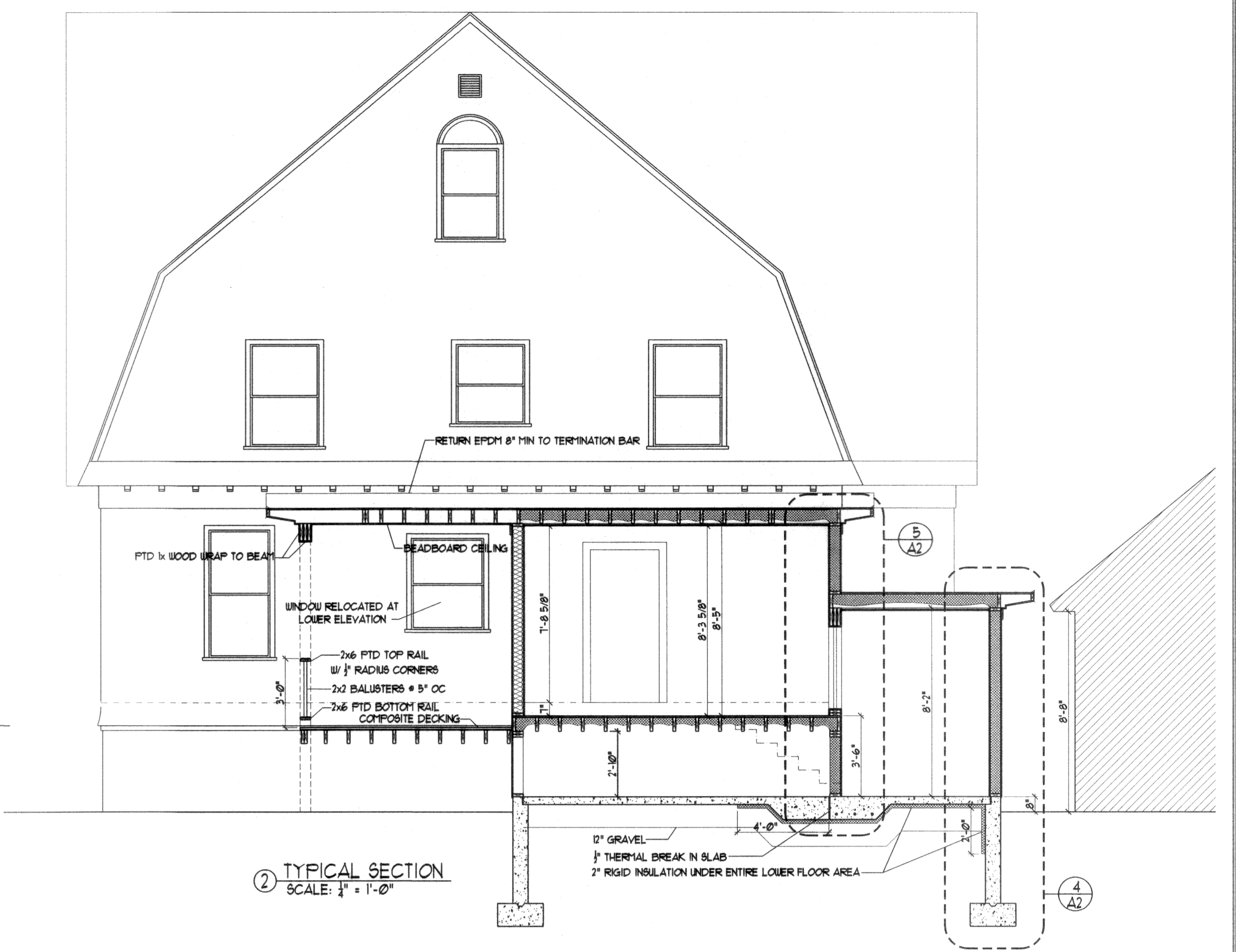
① FLOOR PLAN
SCALE: 1/4" = 1'-0"



⑥ ELEVATION
SCALE: 1/2" = 1'-0"



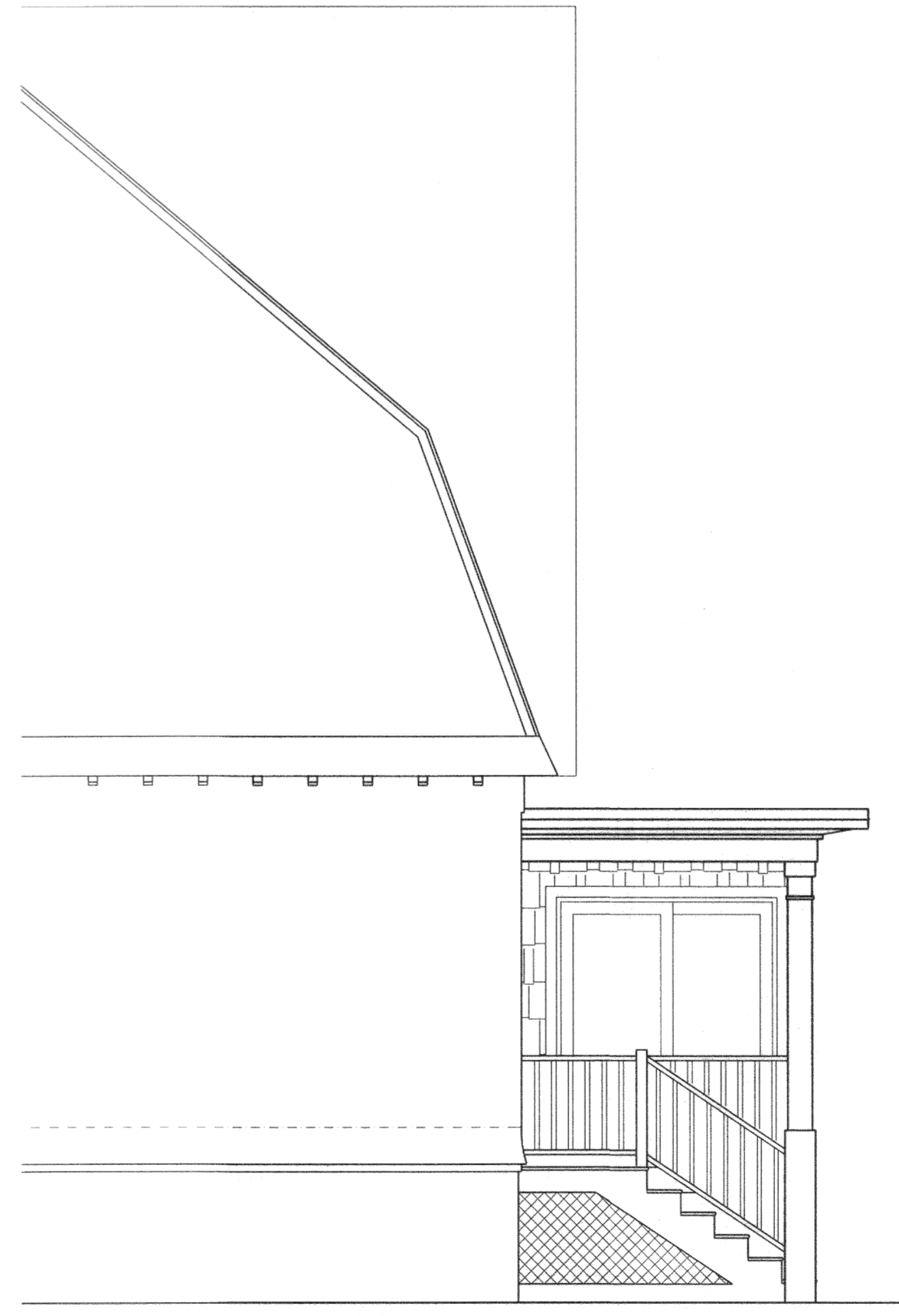
⑦ BENCH SECTION
SCALE: 1/2" = 1'-0"



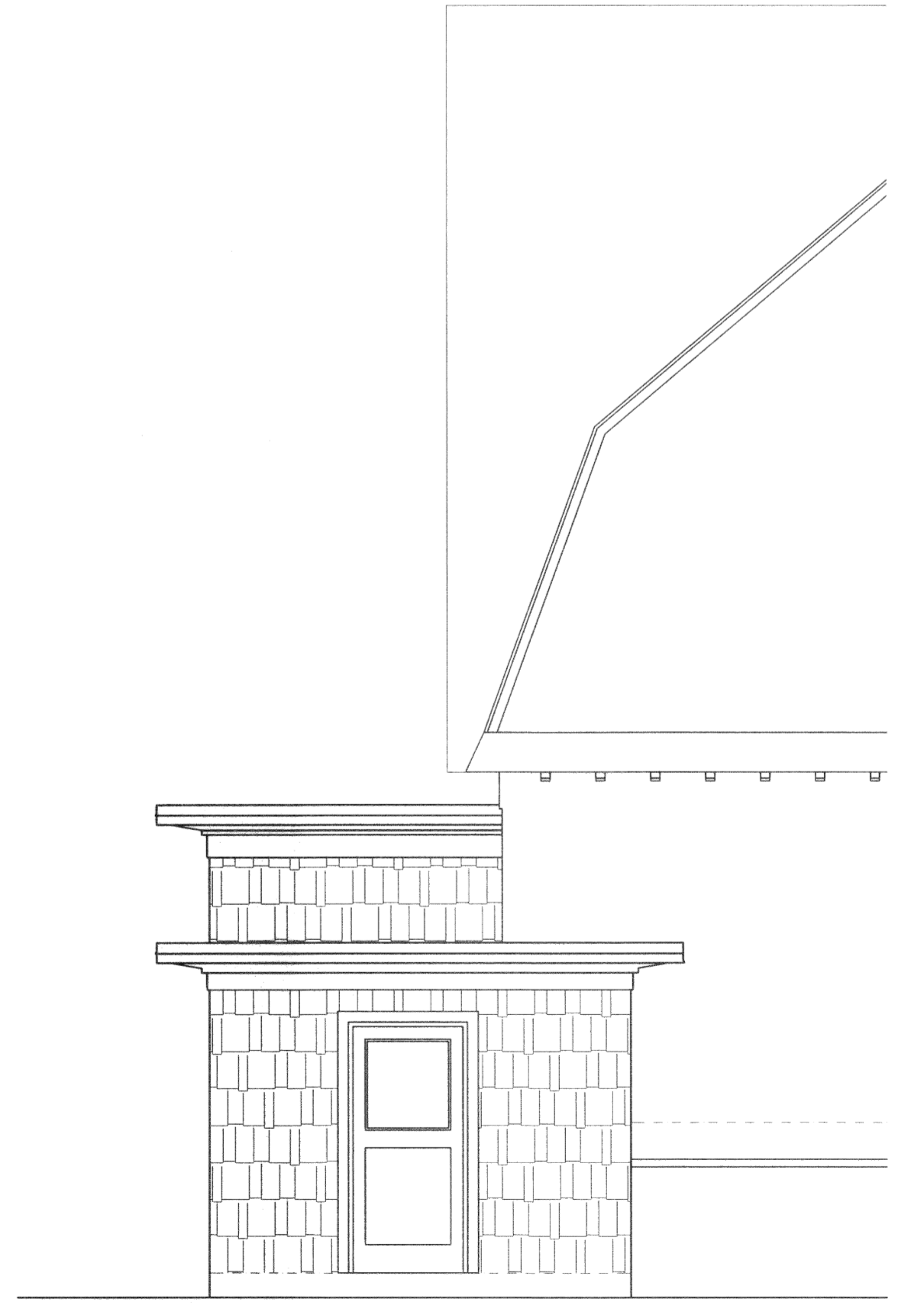
② TYPICAL SECTION
SCALE: 1/4" = 1'-0"



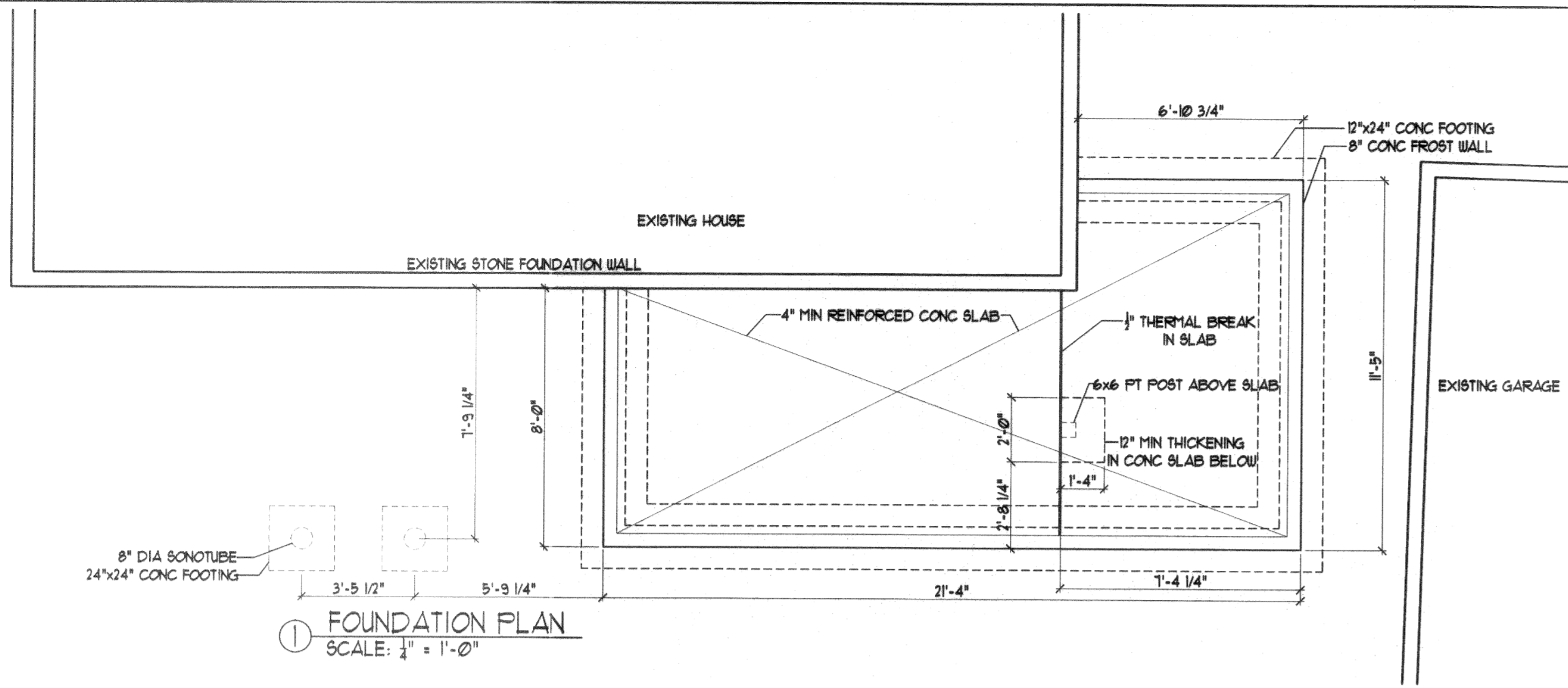
③ ELEVATION
SCALE: 1/4" = 1'-0"



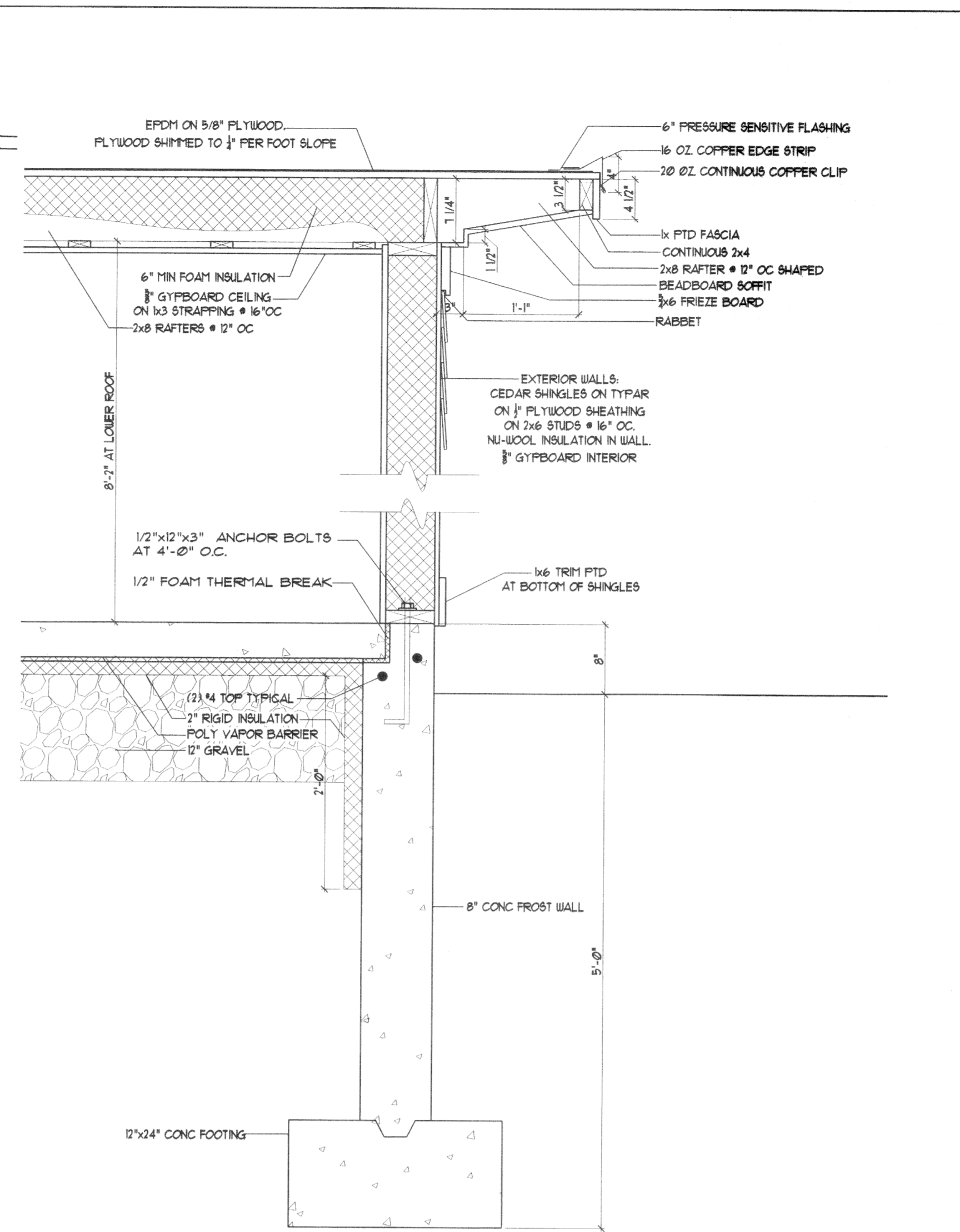
④ ELEVATION
SCALE: 1/4" = 1'-0"



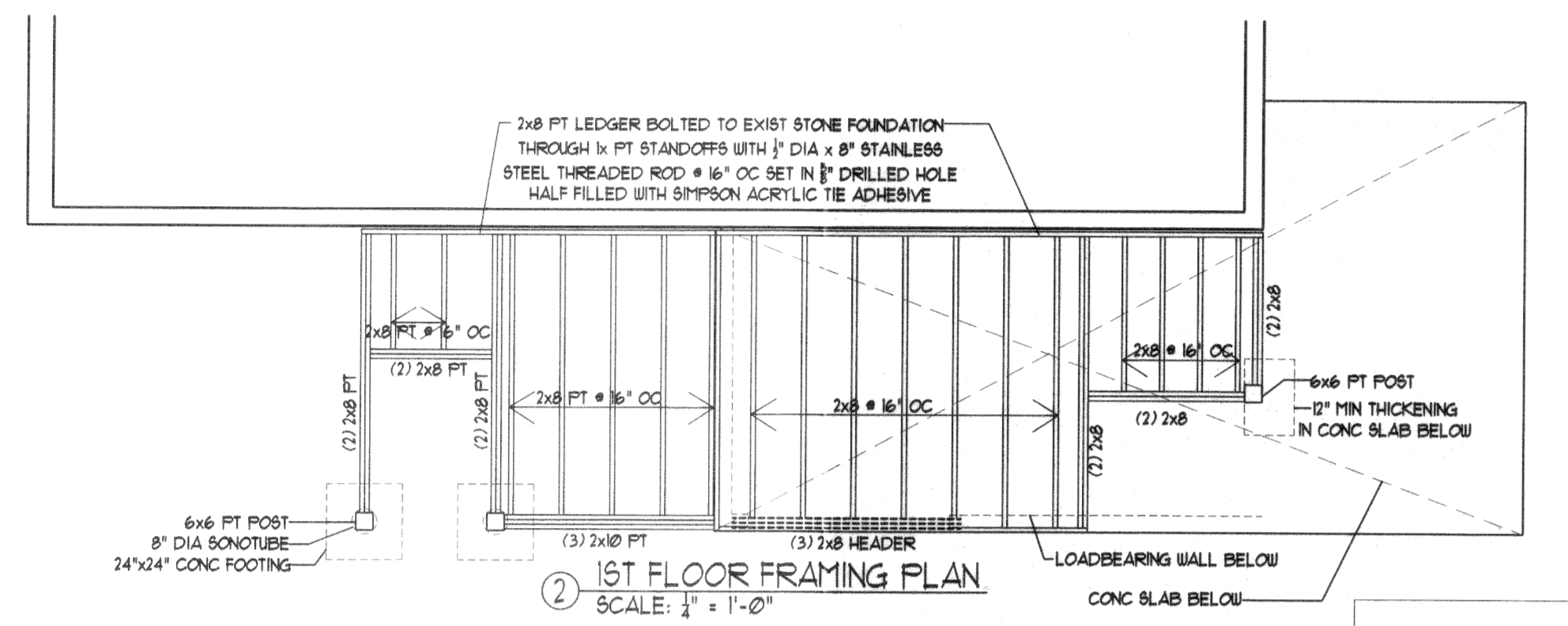
⑤ ELEVATION
SCALE: 1/4" = 1'-0"



1 FOUNDATION PLAN
SCALE: 1" = 1'-0"

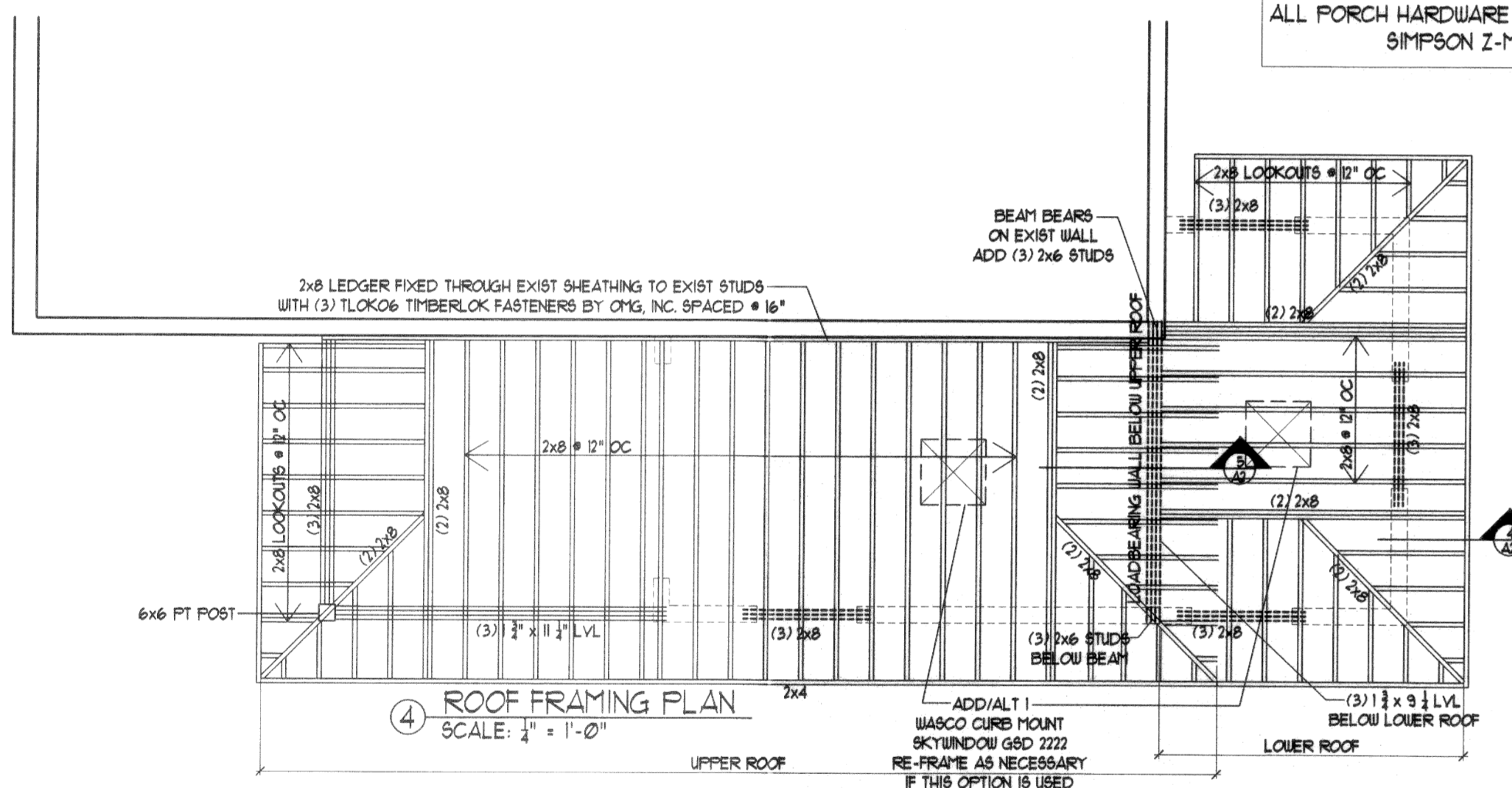


4 EXTERIOR WALL DETAIL SECTION
SCALE: 1" = 1'-0"



2 1ST FLOOR FRAMING PLAN
SCALE: 1" = 1'-0"

NOTE:
ALL PORCH FRAMING IS PRESSURE TREATED.
ALL PORCH HARDWARE IS STAINLESS STEEL OR
SIMPSON Z-MAX COATED

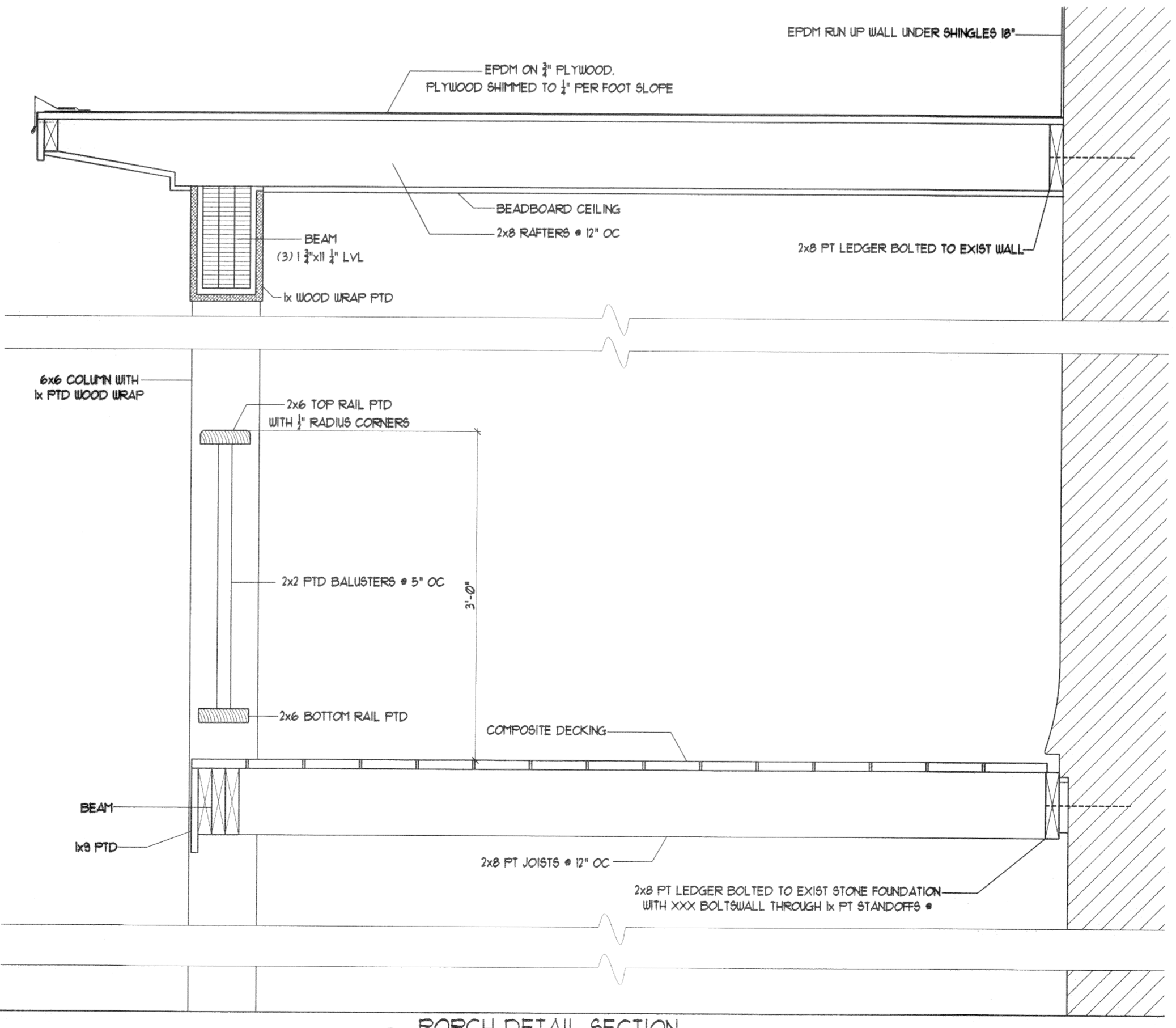
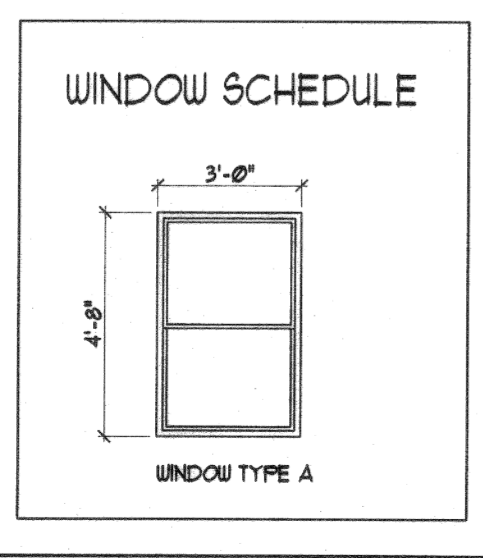
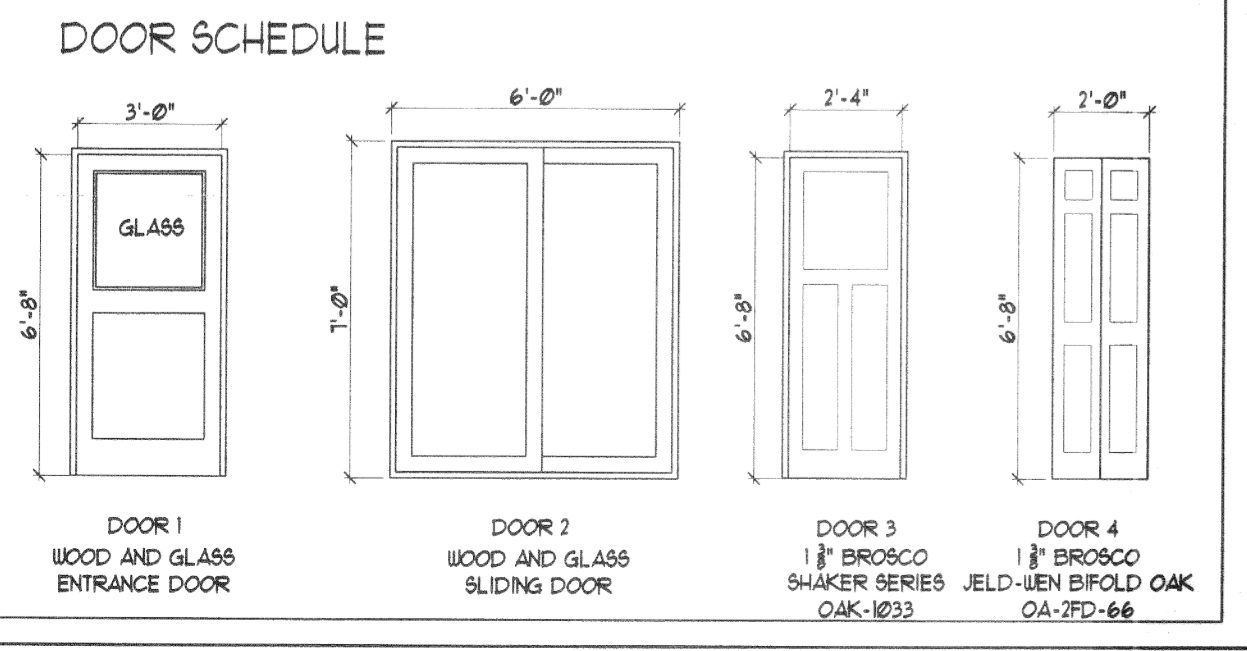


4 ROOF FRAMING PLAN
SCALE: 1" = 1'-0"

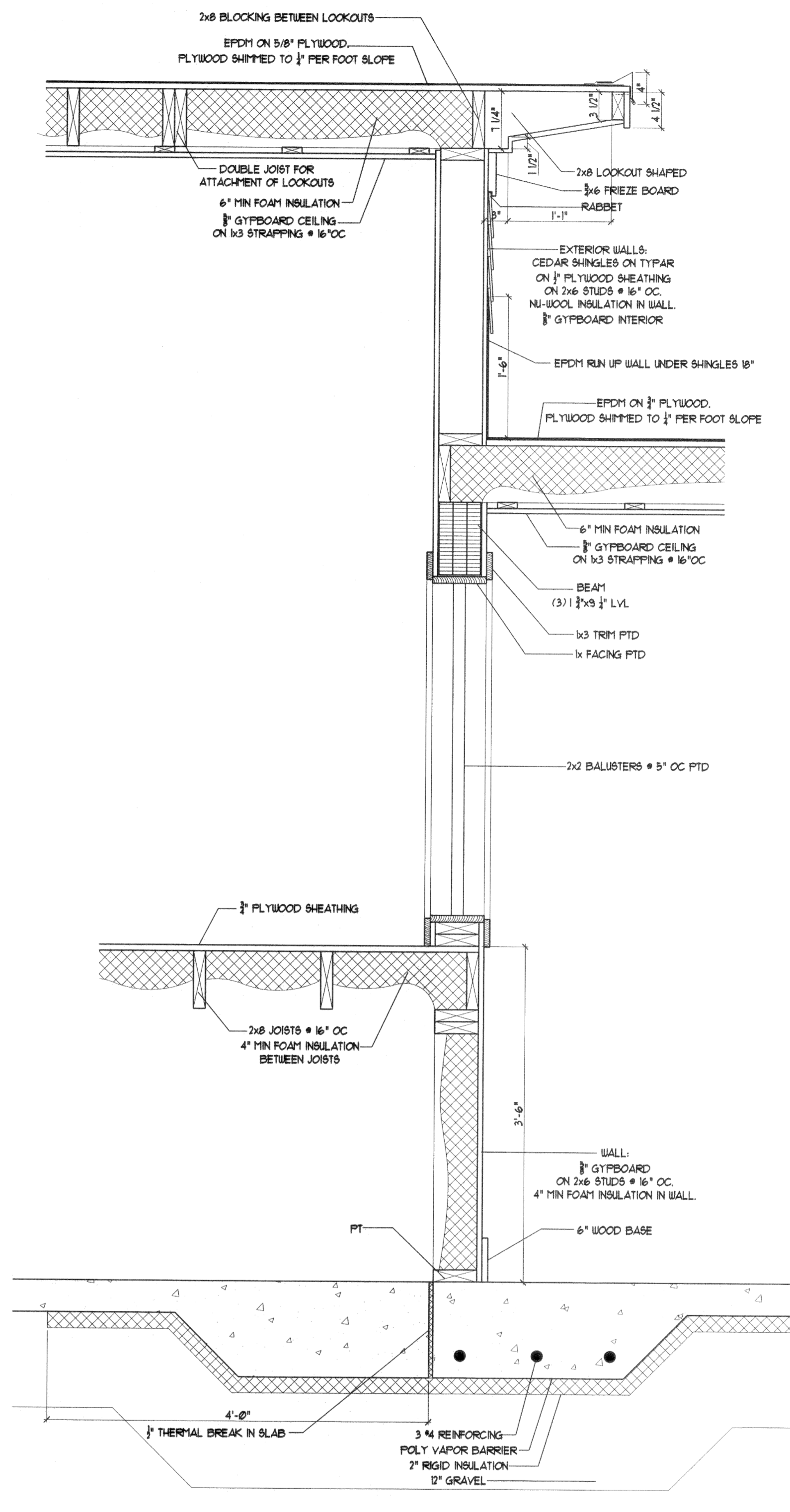
HARDWARE SCHEDULE

FLUSH FRAMED 2x8	LU528
FLUSH FRAMED (2) 2x8	LU528-2
FLUSH FRAMED SKEWED 2x8	L86028
2x8 RAFTER AT CANTILEVER END	1425
6x6 POST BASE	ABU66 WITH 1/2" DIA TITEN ANCHORS
(3) 2x10 TO 6x6 POST	HUC210-3
(2) 2x8 TO 6x6 POST	HUC28-2
(3) 1 1/2" x 8 1/2" LVL TO 6x6 POST	HUC0612-SDC

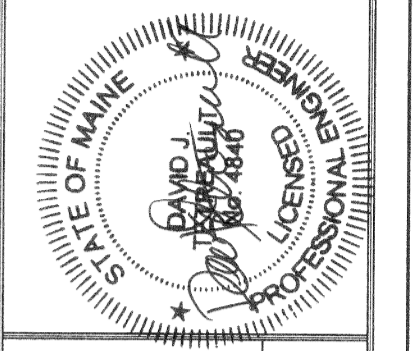
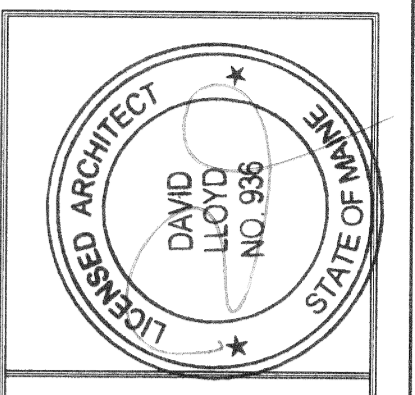
ALL HARDWARE BY SIMPSON STRONGTIE



6 PORCH DETAIL SECTION
SCALE: 1" = 1'-0"



5 EXTERIOR WALL DETAIL SECTION
SCALE: 1" = 1'-0"



OWNER:

ARCHETYPE, P.A. ARCHITECTS
48 Union Wharf Portland, Maine 04101
(207) 772-6022 Fax (207) 772-4056

Schair-Rigoletti
105 Noyes St.
PORTLAND, ME

Project:

Scale: AS NOTED

Date: OCTOBER 2009
Revisions:

FOUNDATION AND
FRAMING PLANS
DETAIL SECTIONS
SCHEDULES