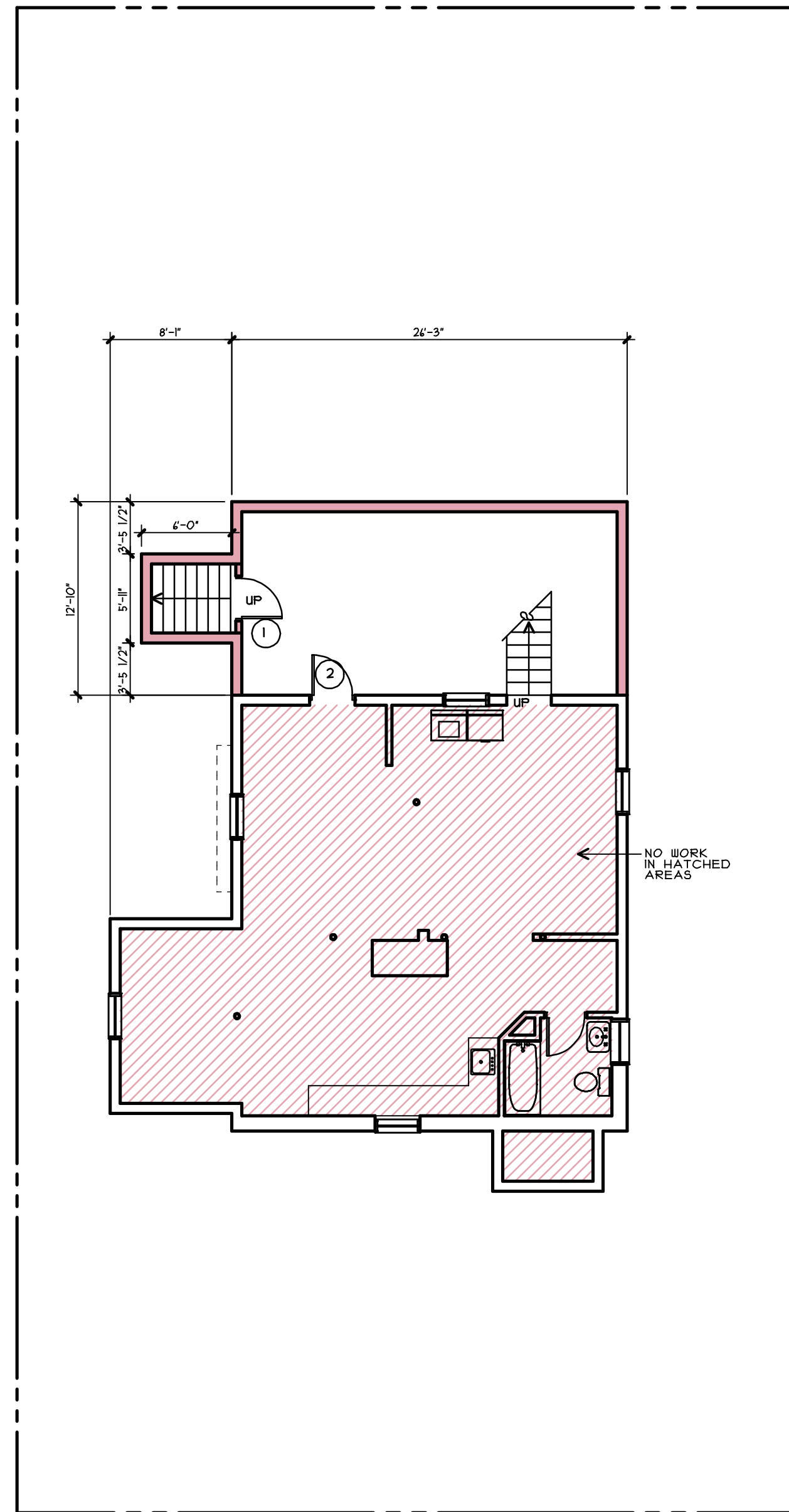
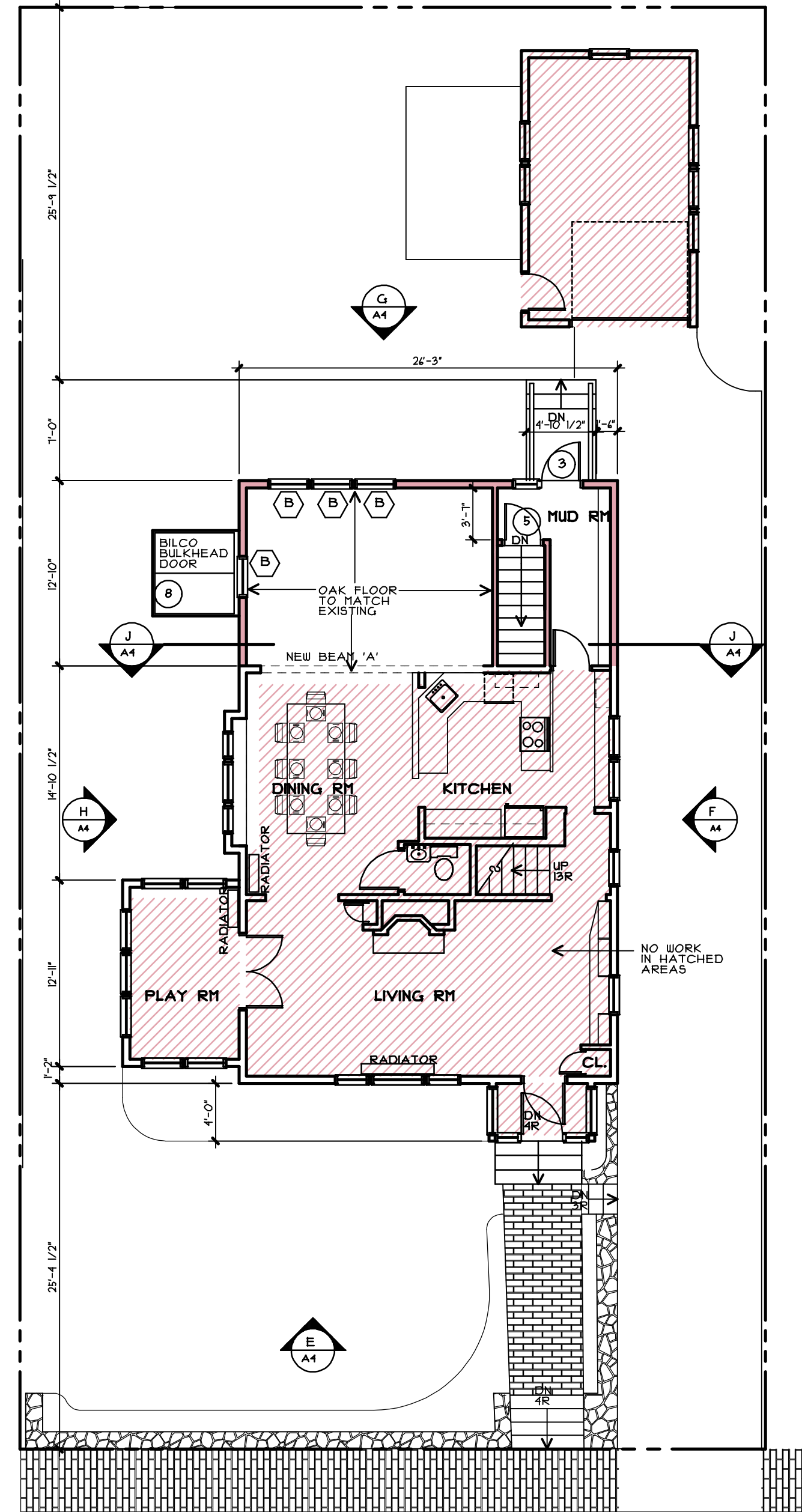


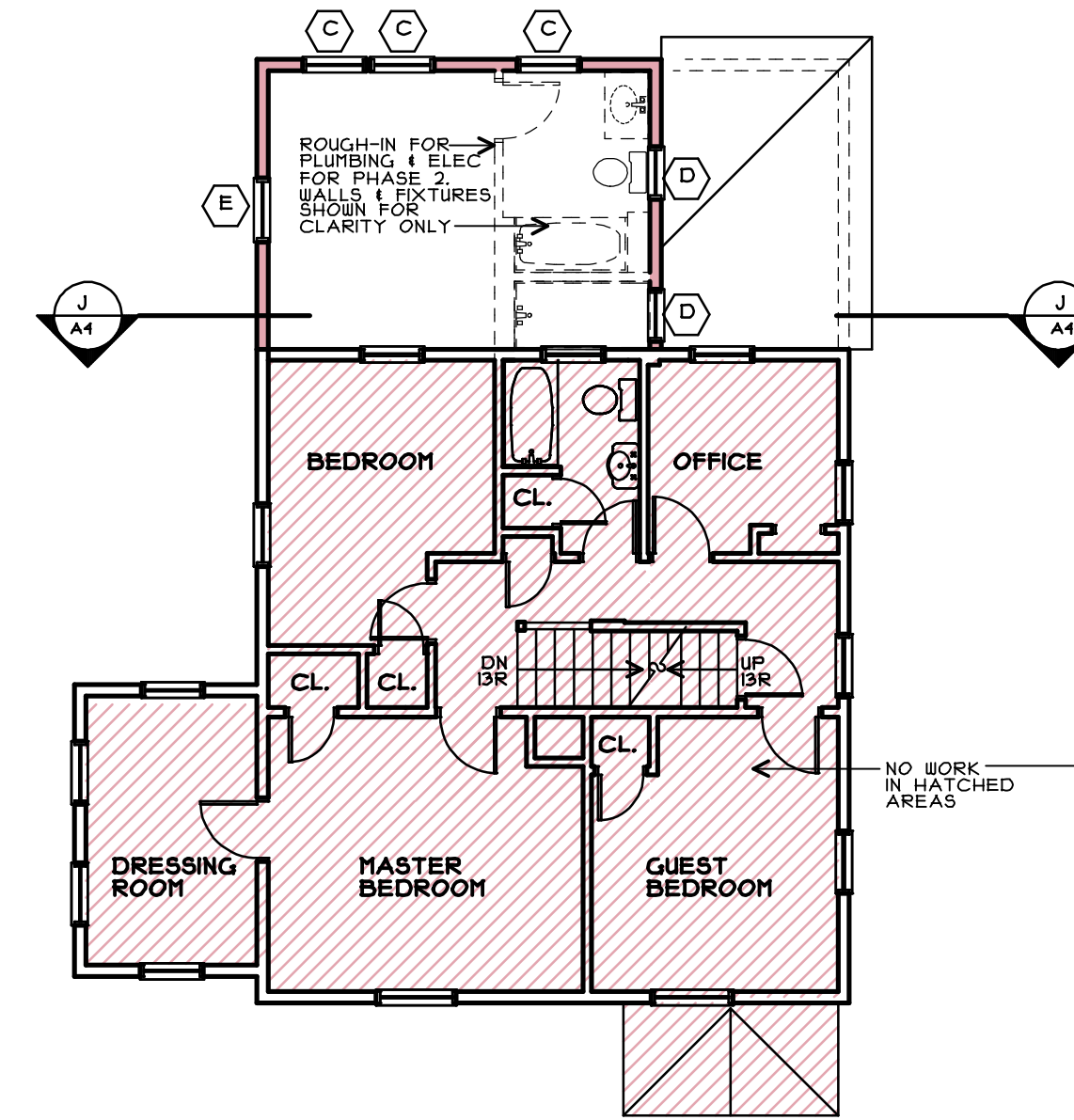
**PITCOCK RESIDENCE**  
 49 WOODMONT STREET  
 PORTLAND, MAINE



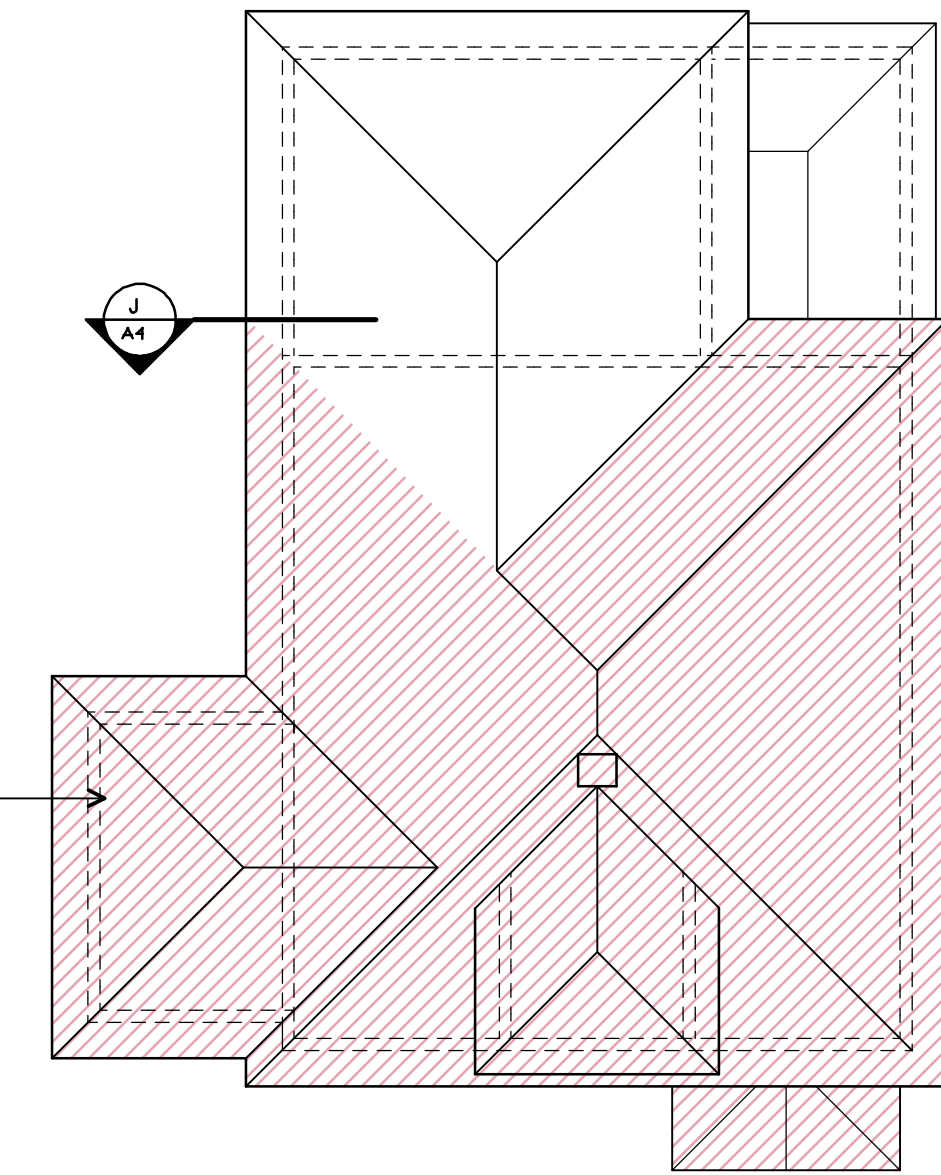
**NEW FOUNDATION PLAN**  
 1/8" = 1'-0"



**NEW FIRST FLOOR PLAN**  
 1/8" = 1'-0"

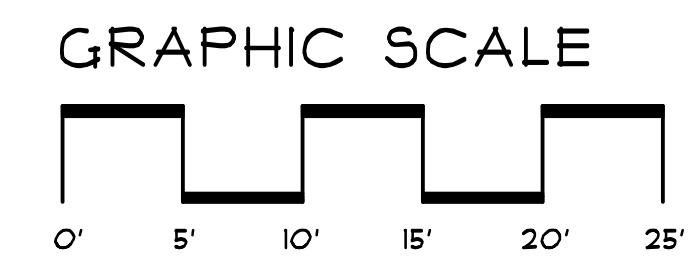


**NEW SECOND FLOOR PLAN**  
 1/8" = 1'-0"



**NEW ROOF PLAN**  
 1/8" = 1'-0"

DOOR SCHEDULE	WINDOW SCHEDULE	
1 2'-8"x4'-8" INSULATED COMPOSITE DOOR-PNT	A 3'-0" 1/2"x4'-0" 3/8" R.O. 3/8" S. CLAD W/WHITE ANI P2020 400 SERIES	ALL GLASS TO BE LOW E INSULATED U FACTOR .30
2 2'-8"x4'-8" FLUSH COMPOSITE DOOR-PNT	B 2'-4 1/8"x4'-8 1/8" R.O. DH CLAD W/WHITE ANI T2244 400 SERIES	CONTRACTOR TO CONFIRM ALL SIZES
3 2'-8"x4'-8" INSULATED DOOR W/2 SILENT-PNT TEMPERED INS. GLASS	C 2'-4 1/8"x4'-4 1/8" R.O. DH CLAD W/WHITE ANI T2242 200 SERIES	PROVIDE ALUMINUM SILL FOR ALL EXTERIOR DOORS
4 2'-8"x4'-8" INSULATED DOOR W/2 SILENT-PNT TEMPERED INS. GLASS	D 1'-9 3/8"x4'-4 1/8" R.O. DH CLAD W/WHITE ANI T1002 200 SERIES	RE-USE EXG DOORS AND HARDWARE IF POSSIBLE
5 2'-4"x4'-8" WOOD 2 PANEL DOOR-PNT	E 1'-9 5/8"x4'-4 1/8" R.O. CLAD W/WHITE BOSS ANI CASEMENT 400 SERIES	2 PANEL DOORS TO MATCH EXISTING DOORS
6 2'-4"x4'-8" WOOD 2 PANEL DOOR-PNT		WINDOWS ARE ANDERSEN 400 SERIES WHITE
7 PAIR 2'-4"x4'-8" WOOD 2 PANEL DOOR-PNT		
8 BILCO CLASSIC SERIES SIZE C STEEL SERRI BULK-HEAD DOOR		



**PHASE 1**



**SRL Architects**  
 Bethel Portland

93 Pitt Street  
 Portland, ME 04103  
 207.747-5975 voice

822 Grover Hill Rd.  
 Bethel, ME 04217  
 207.824.7237 voice/fax

info@smithreuter.com

NEW FLOOR PLANS

278-1

2-10-16

**A2**