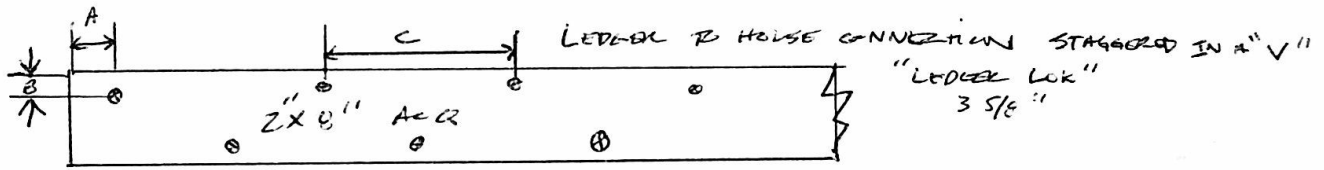
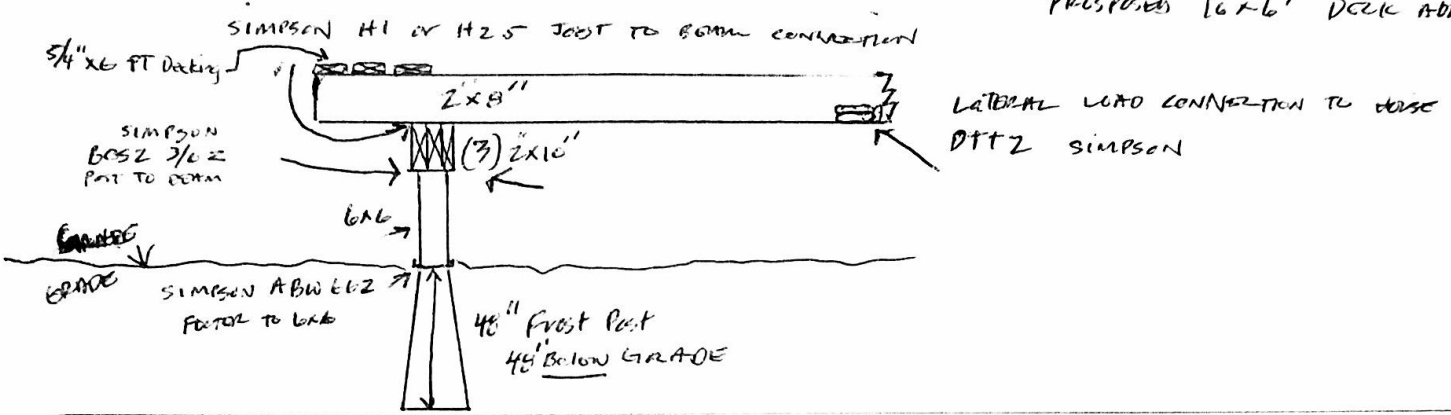




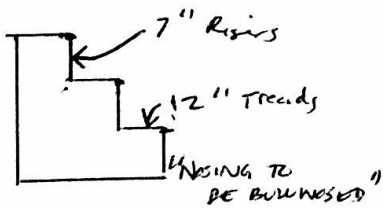
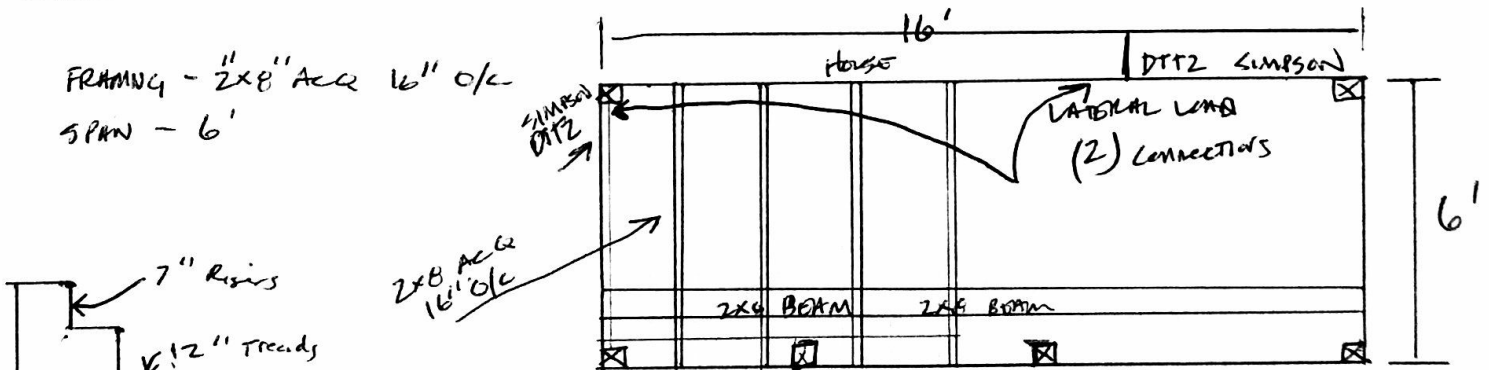
Bridgton • Brunswick • Casco • Damariscotta • Kennebunk • North Conway • Pittsfield • Windham • Yarmouth |

PROPOSED 16'x6' DECK ADDITION

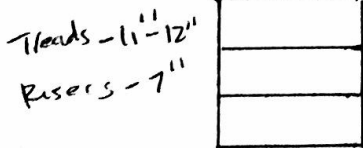


- A - MIN. END DISTANCE - 3 3/4"
- B - MIN. EDGE DISTANCE 1 3/4"
- C - O/C spacing - 12"

FRAMING - 2x8" ACQ 16" O/C
SPAN - 6'



Stairs and Or LANDINGS TO BE MIN. OF 36" WIDE



2x12 Stringers

4x4 Post
36" Tall - No Notch

